

C222C Correlation Report

General information

- Session info: <http://www3.mpifr-bonn.mpg.de/div/vlbi/globalmm/>
- Station feedback: https://www3.mpifr-bonn.mpg.de/div/vlbi/globalmm/sessions/oct22/feedback_oct22.asc
- GBT observed at 86 GHz, log files: <https://safe.nrao.edu/wiki/bin/view/GB/Observing/WbandVLBAcal/C222C>

Status

what	date
Correlation 7mm finished	20 Jan 2023
Correlation 3mm started, with interruptions, partial recorrelation to add PT	31 Jan 2023
Correlation 3mm finished	13 Feb 2023
Packaging 3mm finished	14 Feb 2023

Fringes

Station	Code	Fringes	Plots	Comments
VLBA 7mm		yes		
VLBA-EU 3mm		yes	No0100	
EU-KVN 3mm		yes	No0005	

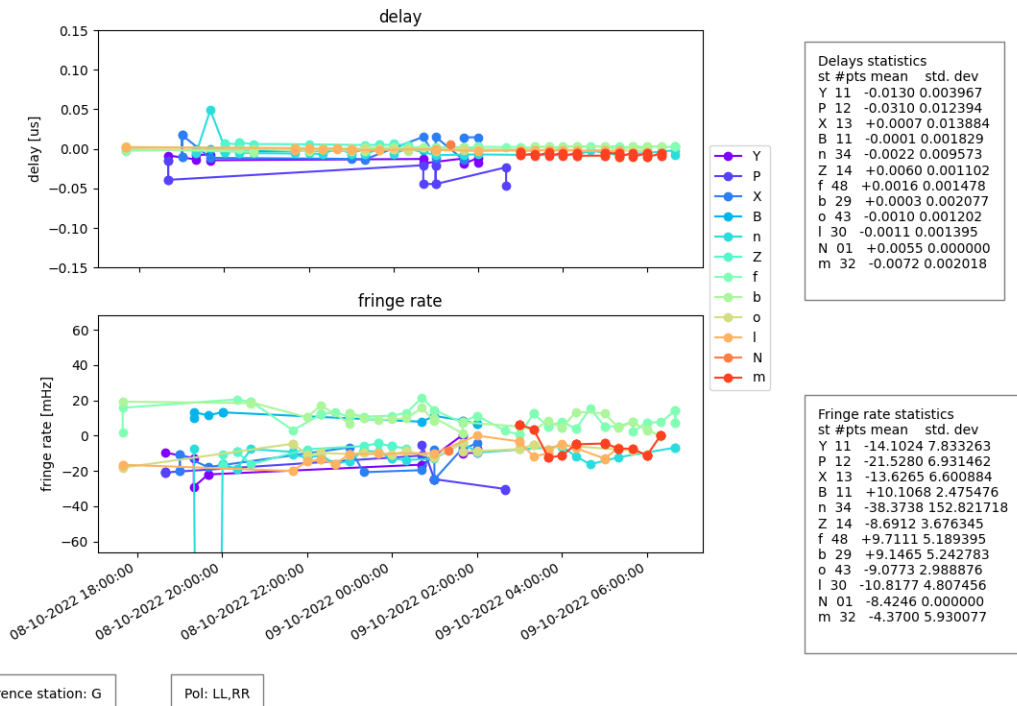
Notes

- VLBA KP, SC could not observe
- VLBA PT has 7mm fringes, at 3mm fringes in a few scans and LCP SNR about -50% of RCP
- Mh data intermittently shows a high >50% recording-time data loss
- NOEMA had poor weather
- KVN partly incomplete raw data

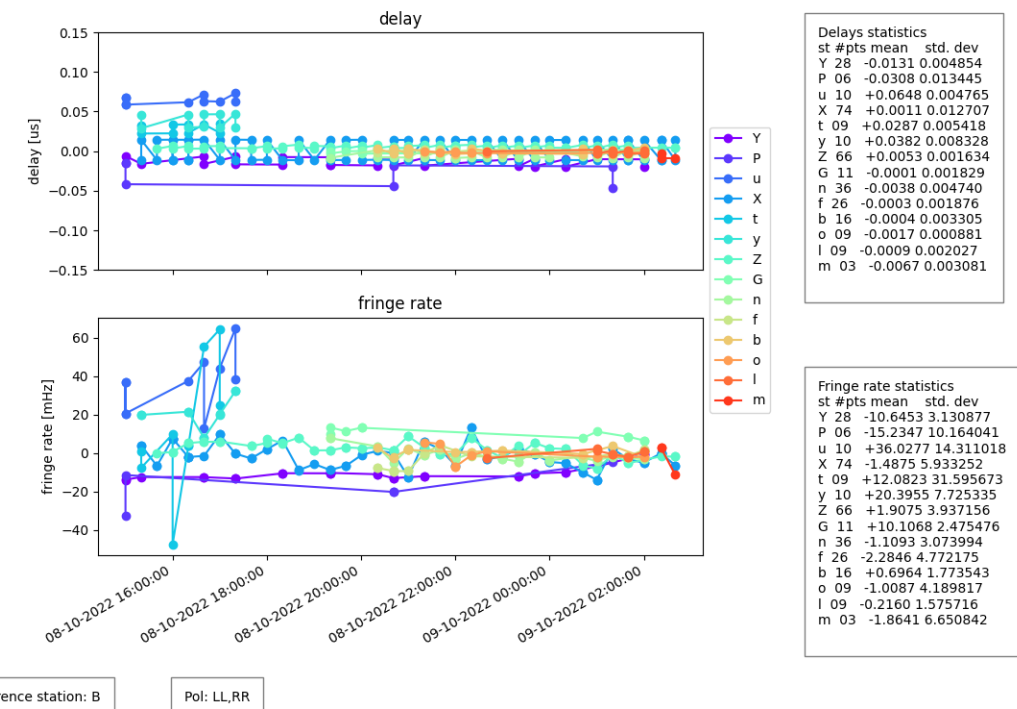
Post-Correlation checks

Residuals 3mm

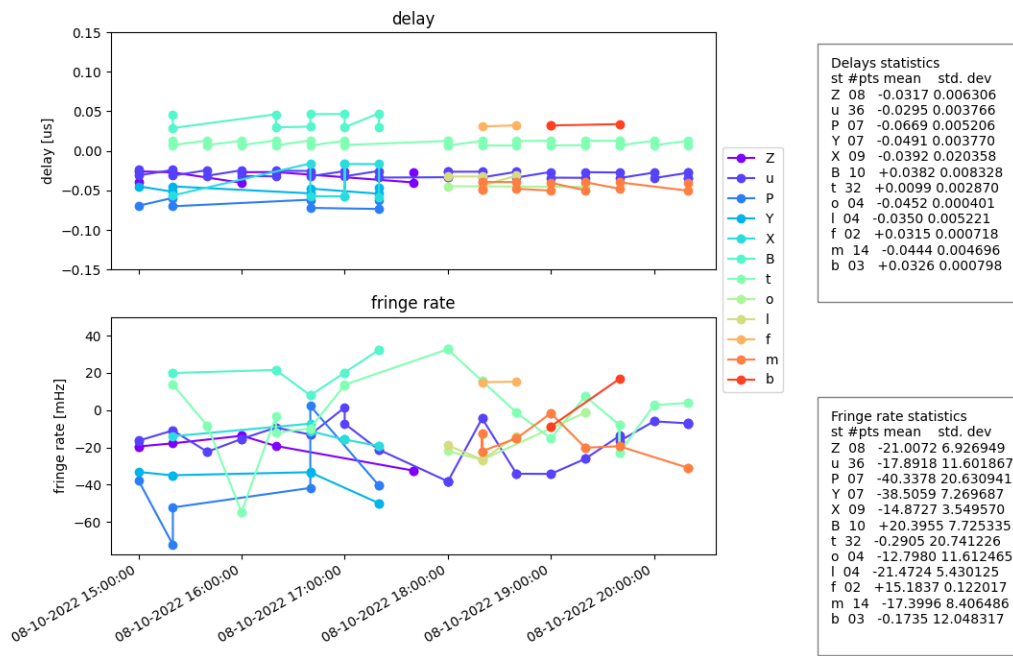
Reference GBT



Reference Ef



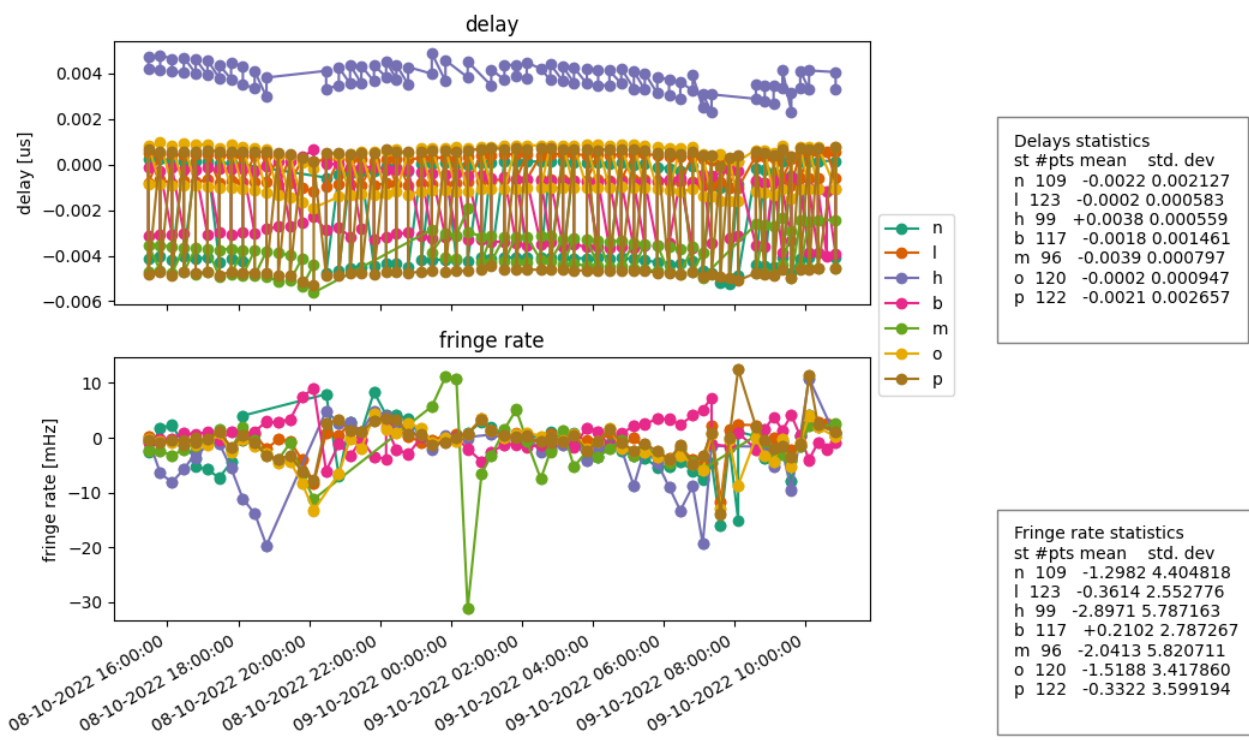
Reference Ky



Reference station: y Pol: LL,RR

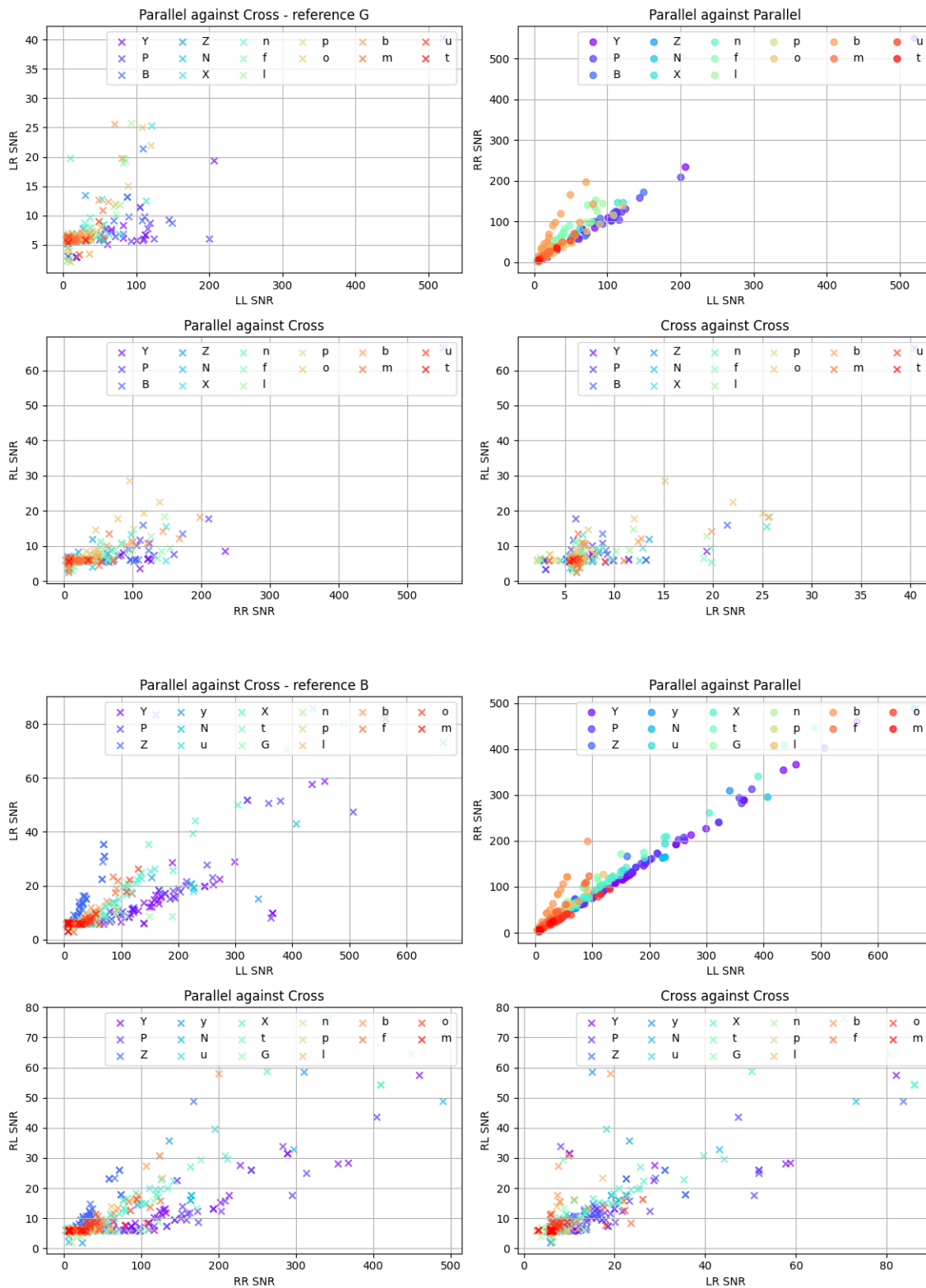
Residuals 7mm

Reference VLBA FD

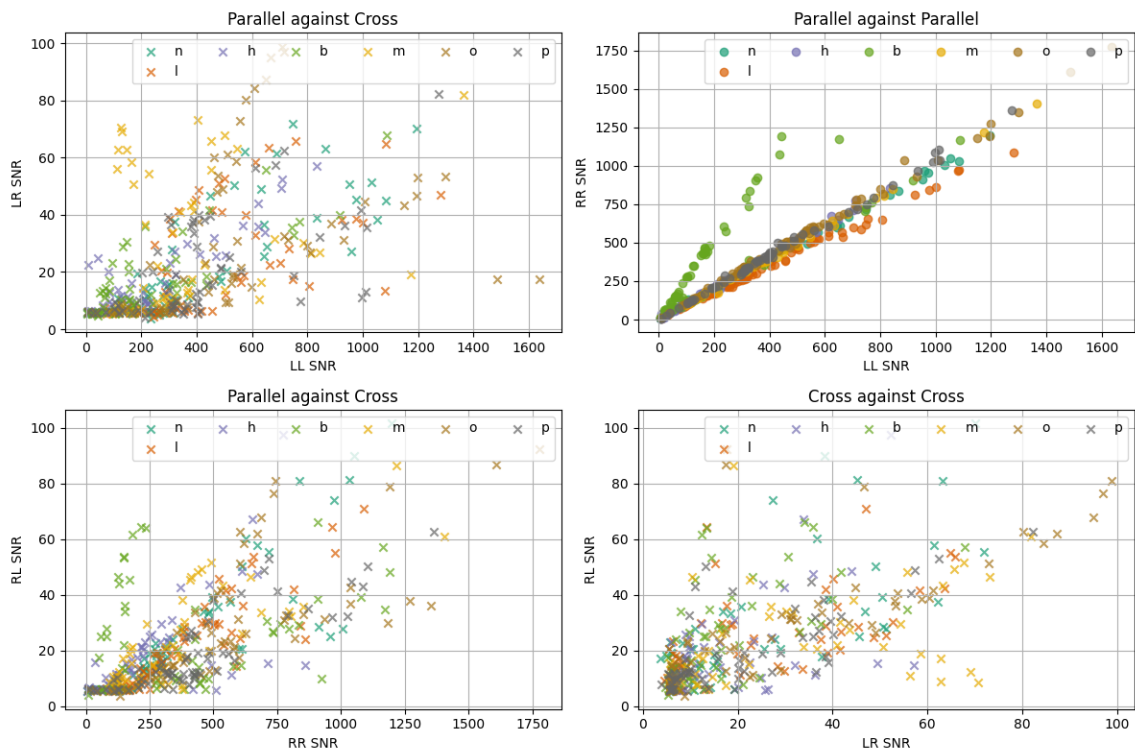


Reference station: f Pol: LL,RR

Polarization 3mm

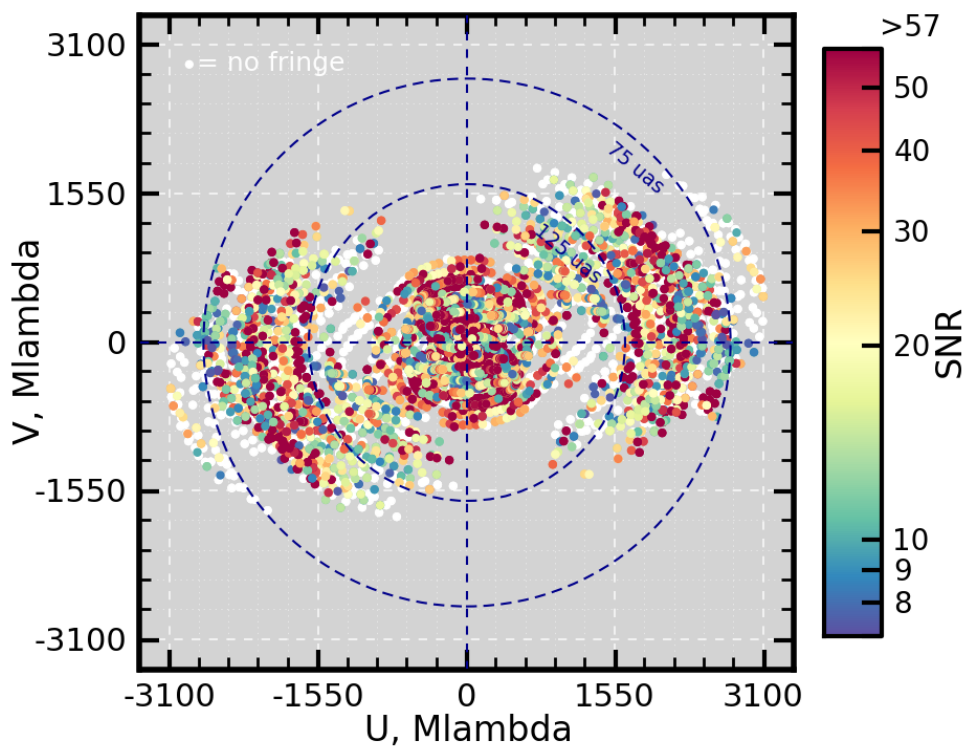


Polarization 7mm



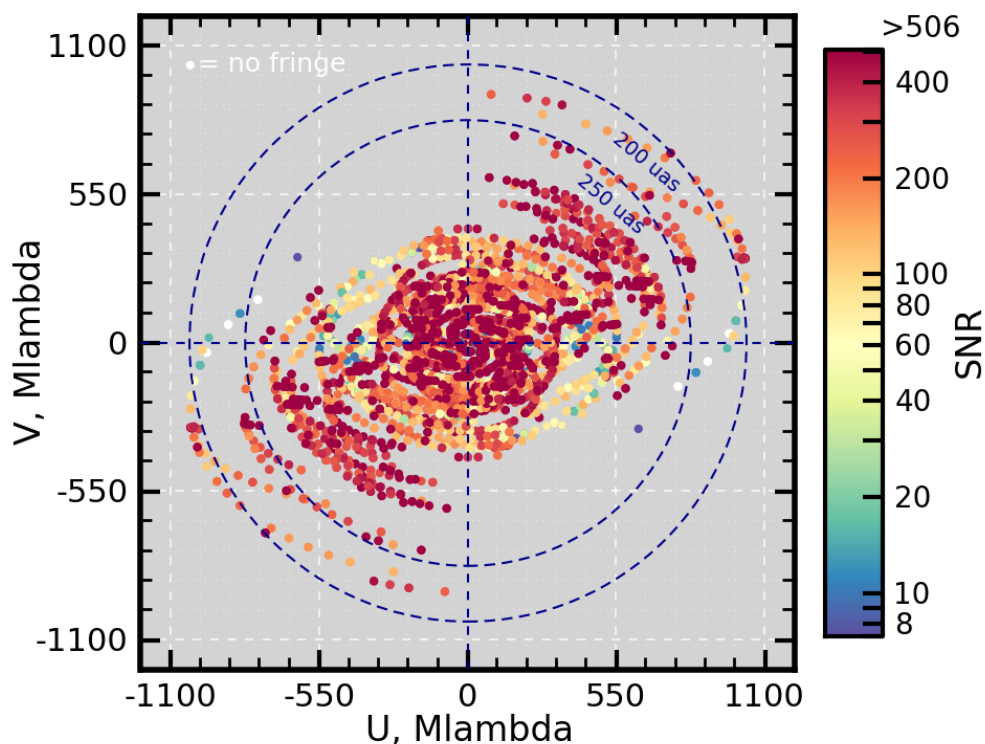
Detections 3mm

UV cov.: all sources, all antennas, all pols.



Detections 7mm

UV cov.: all sources, all antennas, all pols.



FITS completeness (pclist)

3mm

					EF	ON	YS	PV	NN	MH	NL	FD	PT	LA	OV	KP	BR
MK	KY	KU	KT	GB													
c222c_1000	No0001	2013+370	86ghz	o	x	o	o	o	o
.	o	o	x	.													
c222c_1001	No0002	2013+370	86ghz	o	o	o	o	o	o
.	o	o	o	.													
c222c_1002	No0003	OJ287	86ghz	o	o	o	o	o	o	x	o
o													
c222c_1003	No0005	BLLAC	86ghz	o	o	o	83	o	o
.	o	o	o	.													
c222c_1004	No0006	OJ287	86ghz	o	o	o	o	o	o	x	o
o													
c222c_1005	No0008	2013+370	86ghz	o	o	o	o	o	o
.	o	o	o	.													
c222c_1006	No0009	OJ287	86ghz	o	o	o	o	o	o	x	o
o													
c222c_1007	No0011	2013+370	86ghz	o	o	o	o	o	o
.	o	o	o	.													
c222c_1008	No0012	OJ287	86ghz	o	o	o	o	o	o	x	o
o													
c222c_1009	No0014	2013+370	86ghz	o	o	o	o	o	o
.	o	o	o	.													

c222c_1010	No0015	OJ287	86ghz	o	o	o	o	o	x	o
o
c222c_1011	No0017	2013+370	86ghz	o	o	o	o	o	o	o
.	o	o	o
c222c_1012	No0018	OJ287	86ghz	o	o	o	o	o	x	o
o
c222c_1013	No0020	2013+370	86ghz	o	o	o	o	o	o	o
.	o	93	x
c222c_1014	No0021	OJ287	86ghz	o	o	o	o	o	x	o
o
c222c_1015	No0023	BLLAC	86ghz	o	o	o	o	o	o	o
.	o	x	x
c222c_1016	No0025	OJ287	86ghz	o	o	o	o	o	x	o
o	.	.	.	o
c222c_1017	No0027	2013+370	86ghz	o	o	o	o	o	o	o
.	.	.	.	o
c222c_1018	No0028	OJ287	86ghz	o	o	o	o	o	x	o
o	o	o	o
c222c_1019	No0030	2013+370	86ghz	o	o	o	o	o	o	o	o
.	.	.	.	o
c222c_1020	No0031	OJ287	86ghz	o	o	o	o	x	o
o	o	o	o
c222c_1021	No0034	2013+370	86ghz	o	o	o	o	o	o	o	o
.	.	.	.	o
c222c_1022	No0035	OJ287	86ghz	o	o	o	o	x	o
o	o	o	o
c222c_1023	No0038	2013+370	86ghz	o	o	o	.	o	o	o
.	.	.	.	o
c222c_1024	No0039	OJ287	86ghz	o	o	o	o	x	o
o	o	o	o
c222c_1025	No0042	2013+370	86ghz	o	o	o	.	o	o	o
.	.	.	.	o
c222c_1026	No0043	OJ287	86ghz	o	o	o	o	x	o
o	o	o	o
c222c_1027	No0046	2013+370	86ghz	o	o	o	.	o	o	o
.	.	.	.	o
c222c_1028	No0047	OJ287	86ghz	o	o	o	o	x	o
o	o	o	o
c222c_1029	No0050	BLLAC	86ghz	o	o	o	o	o	o	o	o
.	.	.	.	o
c222c_1030	No0051	OJ287	86ghz	o	o	o	o	x	o
o	o	o	o
c222c_1031	No0054	2013+370	86ghz	o	o	o	o	o	o	o	o	o	o	o	o	.	o
.	.	.	.	o
c222c_1032	No0056	OJ287	86ghz	o	x	.
o	o	o	o
c222c_1033	No0058	2013+370	86ghz	o	o	o	o	o	o	o	o	o	o	o	o	x	o
.	.	.	.	o
c222c_1034	No0060	2013+370	86ghz	o	o	o	o	o	o	o	o	o	o	o	o	x	o
.	.	.	.	o

c222c_1035	No0062	2013+370	86ghz	o	o	o	o	o	o	o	o	o	o	o	o	x	o
.	.	.	.	o													
c222c_1036	No0065	2013+370	86ghz	o	o	o	o	o	o	o	o	o	o	o	o	x	o
.	.	.	.	o													
c222c_1037	No0067	2013+370	86ghz	o	o	o	o	o	o	o	o	o	o	o	o	x	o
.	.	.	.	o													
c222c_1038	No0069	2013+370	86ghz	o	o	o	o	o	o	o	o	o	o	o	o	x	o
.	.	.	.	o													
c222c_1039	No0072	BLLAC	86ghz	o	o	o	o	o	o	o	o	o	o	o	o	x	o
.	.	.	.	o													
c222c_1040	No0075	2013+370	86ghz	o	o	o	o	o	o	o	o	o	o	o	o	x	o
.	.	.	.	o													
c222c_1041	No0077	2013+370	86ghz	o	o	o	o	o	o	o	o	o	o	o	o	x	o
o	.	.	.	o													
c222c_1042	No0080	2013+370	86ghz	o	o	o	o	o	o	o	o	o	o	o	o	x	o
o	.	.	.	o													
c222c_1043	No0082	2013+370	86ghz	o	o	o	o	o	o	o	o	o	o	o	o	x	o
o	.	.	.	o													
c222c_1044	No0085	BLLAC	86ghz	o	o	o	o	o	o	o	o	o	o	o	o	x	o
.	.	.	.	o													
c222c_1045	No0088	2013+370	86ghz	o	o	o	o	o	o	o	o	o	o	o	o	x	o
o	.	.	.	o													
c222c_1046	No0090	2013+370	86ghz	o	o	o	o	o	o	o	o	o	o	o	o	x	o
o	.	.	.	o													
c222c_1047	No0093	2013+370	86ghz	o	o	o	o	o	o	o	o	o	o	o	o	x	o
o	.	.	.	o													
c222c_1048	No0095	2013+370	86ghz	o	o	o	o	o	o	o	o	o	o	o	o	x	o
o	.	.	.	o													
c222c_1049	No0097	2013+370	86ghz	o	o	o	o	o	o	o	o	o	o	o	o	x	o
o	.	.	.	o													
c222c_1050	No0100	BLLAC	86ghz	o	o	o	o	o	o	o	o	o	o	o	o	x	o
o	.	.	.	o													
c222c_1051	No0102	BLLAC	86ghz	o	o	o	o	o	o	o	o	o	o	o	o	x	o
o	.	.	.	o													
c222c_1052	No0105	2013+370	86ghz	o	o	o	o	o	x	o	
o	.	.	.	o													
c222c_1053	No0107	2013+370	86ghz	o	o	o	o	o	x	o	
o	.	.	.	o													
c222c_1054	No0110	2013+370	86ghz	o	o	o	o	o	x	o	
o	.	.	.	o													
c222c_1055	No0112	2013+370	86ghz	o	o	o	o	o	x	o	
o	x	x	x	o													
c222c_1056	No0114	2013+370	86ghz	o	o	o	o	o	x	o	
o	x	x	x	o													
c222c_1057	No0117	BLLAC	86ghz	o	o	o	o	o	x	o	
o	.	.	.	o													
c222c_1058	No0120	2013+370	86ghz	o	o	o	o	o	x	o	
o	x	x	x	o													
c222c_1059	No0122	2013+370	86ghz	o	o	o	o	o	x	o	
o	x	x	x	o													

c222c_1006	No0022	OJ287	43ghz	o	o	o	o	o	x	o	o	o	x
c222c_1007	No0026	OJ287	43ghz	o	o	o	o	o	x	o	o	o	x
c222c_1008	No0029	OJ287	43ghz	o	o	o	o	o	x	o	o	o	.
c222c_1009	No0032	OJ287	43ghz	.	o	o	o	o	x	o	o	o	.
c222c_1010	No0036	OJ287	43ghz	.	o	o	o	o	x	o	o	o	.
c222c_1011	No0040	OJ287	43ghz	.	o	o	o	o	x	o	o	.	.
c222c_1012	No0044	OJ287	43ghz	.	o	o	o	o	x	o	o	.	.
c222c_1013	No0048	OJ287	43ghz	.	o	o	o	o	x	o	o	.	.
c222c_1014	No0052	OJ287	43ghz	.	o	o	o	o	x	o	o	.	.
c222c_1015	No0055	2013+370	43ghz	o	o	o	o	.	.	o	.	o	x
c222c_1016	No0059	2013+370	43ghz	o	o	o	o	o	x	o	.	o	x
c222c_1017	No0061	2013+370	43ghz	o	o	o	o	o	x	o	.	o	x
c222c_1018	No0063	2013+370	43ghz	o	o	o	o	o	x	o	.	o	x
c222c_1019	No0066	2013+370	43ghz	o	o	o	o	o	x	o	.	o	x
c222c_1020	No0068	2013+370	43ghz	o	o	o	o	o	x	o	.	o	x
c222c_1021	No0070	2013+370	43ghz	o	o	o	o	o	x	o	.	o	x
c222c_1022	No0073	BLLAC	43ghz	o	o	o	o	o	x	o	.	o	x
c222c_1023	No0076	2013+370	43ghz	o	o	o	o	o	x	o	.	o	x
c222c_1024	No0078	2013+370	43ghz	o	o	o	o	o	x	o	o	o	x
c222c_1025	No0081	2013+370	43ghz	o	o	o	o	o	x	o	o	o	x
c222c_1026	No0083	2013+370	43ghz	o	o	o	o	o	x	o	o	o	x
c222c_1027	No0086	BLLAC	43ghz	o	o	o	o	o	x	o	o	o	x
c222c_1028	No0089	2013+370	43ghz	o	o	o	o	o	x	o	o	o	x
c222c_1029	No0091	2013+370	43ghz	o	o	o	o	o	x	o	o	o	x
c222c_1030	No0094	2013+370	43ghz	o	o	o	o	o	x	o	o	o	x
c222c_1031	No0096	2013+370	43ghz	o	o	o	o	o	x	o	o	o	x
c222c_1032	No0098	2013+370	43ghz	o	o	o	o	o	x	o	o	o	x
c222c_1033	No0101	BLLAC	43ghz	o	o	o	o	o	x	o	o	o	x
c222c_1034	No0103	BLLAC	43ghz	o	o	o	o	o	x	o	o	o	x
c222c_1035	No0106	2013+370	43ghz	o	o	o	o	o	x	o	o	o	x
c222c_1036	No0108	2013+370	43ghz	o	o	o	o	o	x	o	o	o	x
c222c_1037	No0111	2013+370	43ghz	o	o	o	o	o	x	o	o	o	x
c222c_1038	No0113	2013+370	43ghz	o	o	o	o	o	x	o	o	o	x
c222c_1039	No0115	2013+370	43ghz	o	o	o	o	o	x	o	o	o	x
c222c_1040	No0118	BLLAC	43ghz	o	o	o	o	o	x	o	o	o	x
c222c_1041	No0121	2013+370	43ghz	o	o	o	o	o	x	o	o	o	x
c222c_1042	No0123	2013+370	43ghz	o	o	o	o	o	x	o	o	o	x
c222c_1043	No0126	2013+370	43ghz	o	o	o	o	o	x	o	o	o	x
c222c_1044	No0128	2013+370	43ghz	o	o	o	o	o	x	o	o	o	.
c222c_1045	No0130	2013+370	43ghz	o	o	o	o	o	x	o	o	o	.
c222c_1046	No0133	BLLAC	43ghz	o	o	o	o	o	x	o	o	o	x
c222c_1047	No0135	2013+370	43ghz	o	o	o	o	o	x	o	o	o	.
c222c_1048	No0137	2013+370	43ghz	o	o	o	o	o	x	o	x	o	.
c222c_1049	No0139	2013+370	43ghz	o	o	o	o	o	x	o	x	o	.
c222c_1050	No0141	2013+370	43ghz	o	o	o	o	o	x	o	x	.	.
c222c_1051	No0143	2013+370	43ghz	o	o	o	o	o	x	o	x	.	.
c222c_1052	No0145	2013+370	43ghz	o	o	o	o	o	x	o	x	.	.
c222c_1053	No0147	BLLAC	43ghz	o	o	o	o	o	x	o	o	o	.
c222c_1054	No0149	BLLAC	43ghz	o	o	o	o	o	x	o	o	o	.
c222c_1055	No0151	BLLAC	43ghz	o	o	o	o	o	x	o	o	o	.

c222c_1056	No0153	0420-014	43ghz	o	o	o	o	o	x	o	o	o	x
c222c_1057	No0155	BLLAC	43ghz	o	o	o	o	o	x	o	o	o	.
c222c_1058	No0157	0420-014	43ghz	o	o	o	o	o	x	o	o	o	x
c222c_1059	No0159	0420-014	43ghz	o	o	o	o	o	x	o	o	o	x
c222c_1060	No0161	0420-014	43ghz	o	o	o	o	o	x	o	o	o	x
c222c_1061	No0163	0420-014	43ghz	o	o	o	o	o	x	o	o	o	x
c222c_1062	No0165	0420-014	43ghz	o	o	o	o	o	x	o	o	o	x

Note: SC, KP could not observe