

C212C Correlation Report

General information

- Session info: <http://www3.mpifr-bonn.mpg.de/div/vlbi/globalmm/>
- Block schedule: <https://www3.mpifr-bonn.mpg.de/div/vlbi/globalmm/sessions/oct21/MMSchedule.asc>
- Station feedback: http://www3.mpifr-bonn.mpg.de/div/vlbi/globalmm/sessions/oct21/feedback_oct21.asc
- Three projects: POLCAL3 3mm, MT002A 3mm, MB018B 3mm+7mm

Fringes

Station	Code	Fringes		Plots	Comments
		3 mm	7 mm		
Ef	B	yes			
Pv	P	yes			
On	X	yes			
Ys	Y	no			no fringes in 0s+-16us up to 0s+-256us, nor 1s+-256us nor -1s+-256us
Mh	Z	yes			
Nn	N	no	no		Did not participate due to weather conditions, but was recording nonetheless
Br	b	yes	yes		
Fd	f	yes	yes		
La	l	yes	yes		
Nl	n	yes	yes		
Ov	o	yes	yes		
Kp	k	yes	yes		
Pt	p	yes	yes		
Mk	m	yes	yes		
Sc	c	n/a	yes		No 3mm rx
Hn	h	n/a	yes		No 3mm rx
Ku	u	yes			

Station	Code	Fringes		Plots	Comments
		3 mm	7 mm		
Kt	t	yes			
Ky	y	yes			

Notes

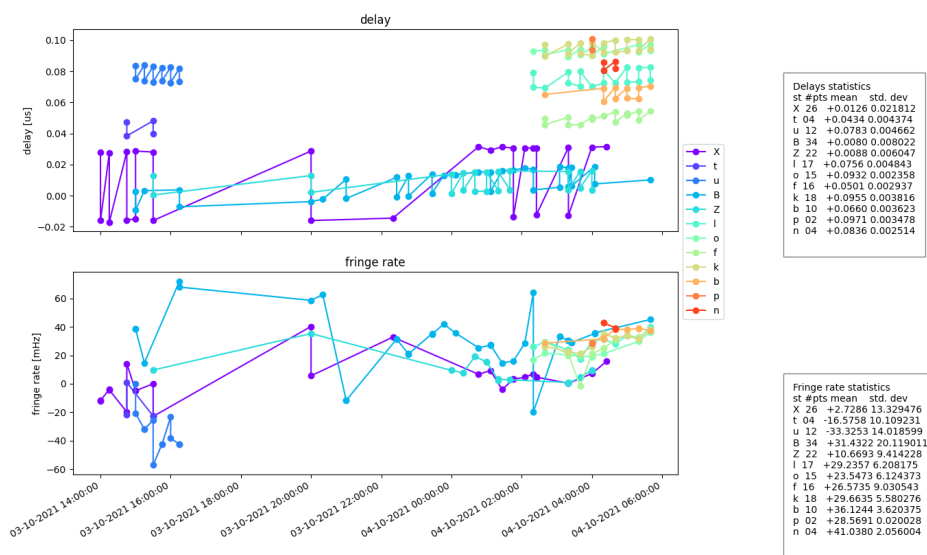
- Effelsberg scans No0001 to No0003 not usable since recording manually (re)started at wrong time.
- NOEMA did not participate in c212c due to high winds - but kept recording
- VLBA SC HN lacked 3mm receiver, and SC HN PT affected by occasionally or entirely missing 2nd polarization.
- Weather issues at most stations

Post-Correlation checks

Residuals

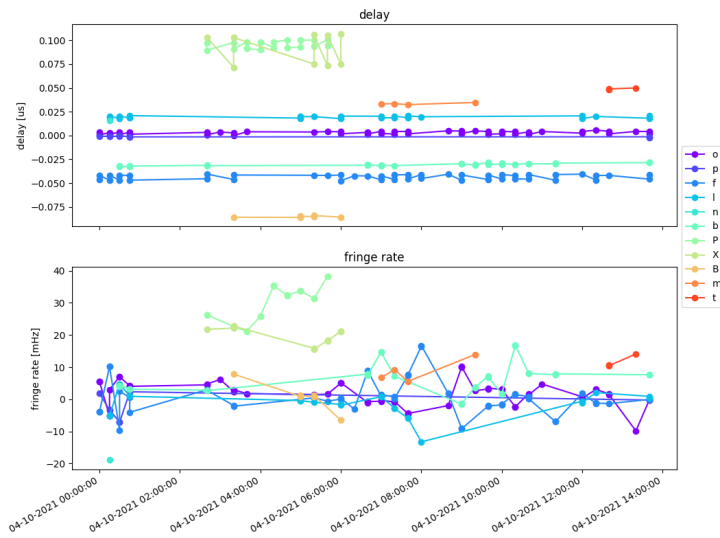
3mm

Residuals to Pico Veleta



Reference station: P Pol: LL,RR

Residuals to Kitt Peak



Delays statistics

st	#pts	mean	std. dev
o	47	+0.0030	0.001377
p	09	-0.0011	0.000521
f	45	-0.0436	0.002409
l	23	+0.0194	0.001074
n	01	+0.0160	0.000000
b	27	-0.0305	0.001200
P	18	+0.0955	0.003816
X	09	+0.0910	0.015475
B	06	-0.0853	0.000663
m	04	+0.0335	0.000807
t	03	+0.0492	0.000586

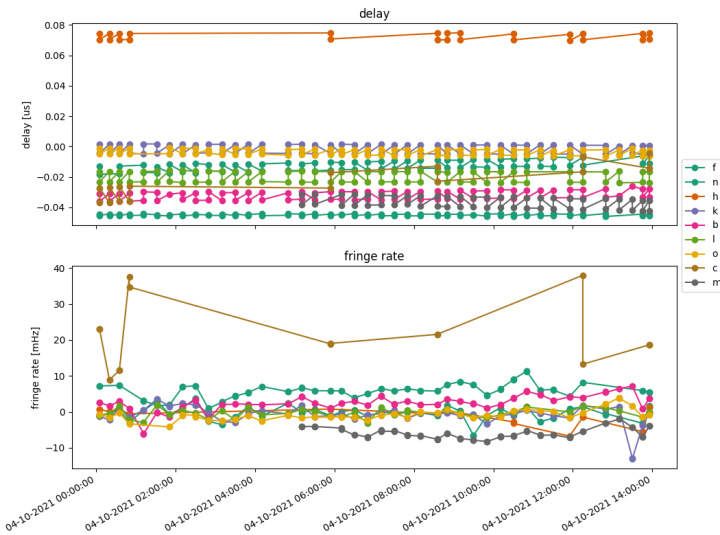
Fringe rate statistics

st	#pts	mean	std. dev
o	47	+1.8680	3.769121
p	09	-1.6594	3.535551
f	45	+0.5837	5.598409
l	23	-1.3416	3.794866
n	01	-18.8831	0.000000
b	27	+6.4894	4.748071
P	18	+29.6635	5.580276
X	09	-19.6421	2.588161
B	06	+0.8930	4.138828
m	04	+8.8510	3.210242
t	03	+11.7102	1.667690

Reference station: k

Pol: LL,RR

7mm Residuals wrt VLBA Kitt Peak



Delays statistics

st	#pts	mean	std. dev
f	80	-0.0449	0.000516
n	74	-0.0124	0.003144
h	26	-0.0724	0.002088
k	84	-0.0017	0.002965
b	81	-0.0320	0.002757
l	78	-0.0199	0.003479
o	80	-0.0037	0.001938
c	16	-0.0234	0.010157
m	52	-0.0365	0.003597

Fringe rate statistics

st	#pts	mean	std. dev
f	80	-0.3192	1.897453
n	74	+5.8405	2.037409
h	26	-1.1179	2.396025
k	84	-0.7214	2.442614
b	81	+2.3925	2.121101
l	78	-0.3455	1.233643
o	80	-0.8869	1.420292
c	16	+20.5471	9.047960
m	52	-5.8231	1.541158

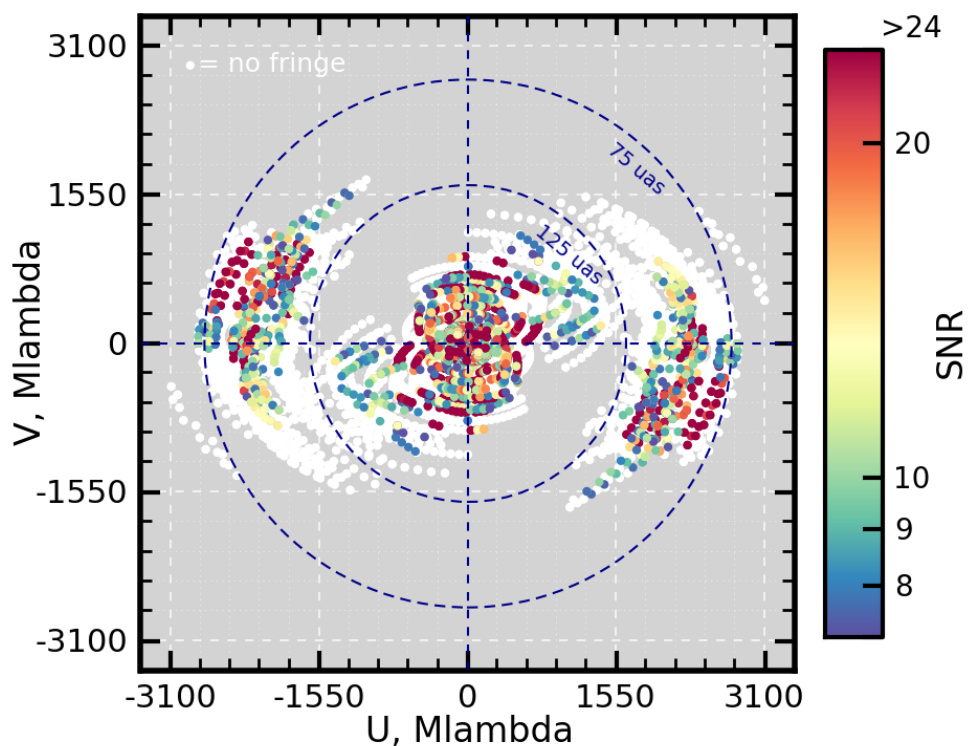
Reference station: p

Pol: LL,RR

UV coverage

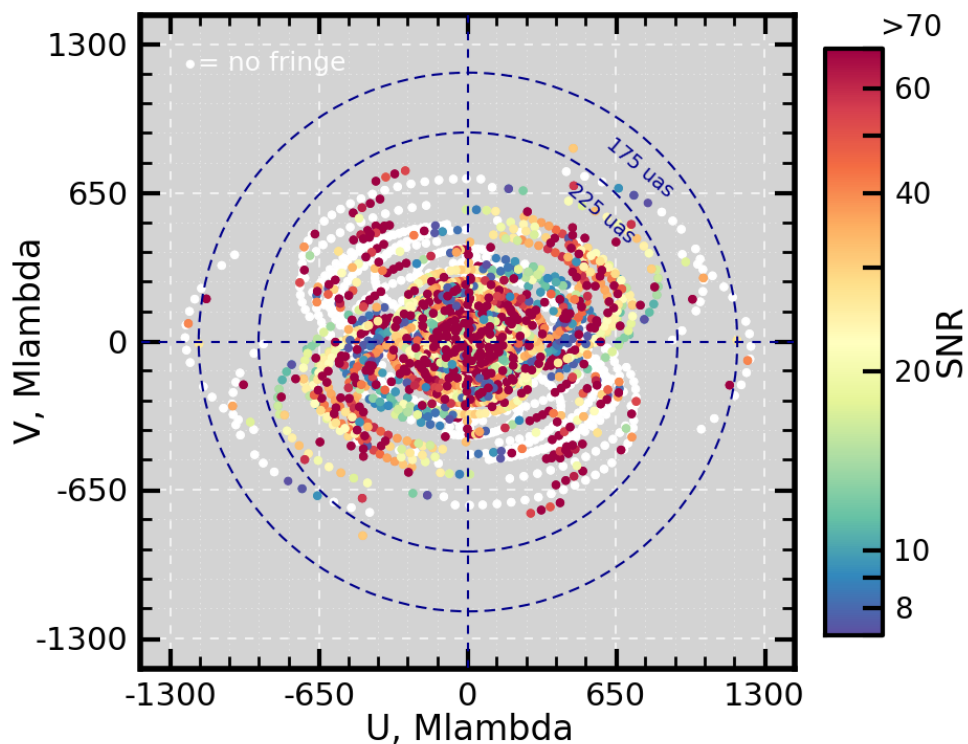
3mm

UV cov.: all sources, all antennas, all pols.



7mm

UV cov.: all sources, all antennas, all pols.



FITS completeness (pclist)

3mm

Note: Nn did not observe

LA	KP	OV	BR	HN	SC	MK			EF	ON	YS	PV	NN	MH	KY	KU	KT	NL	FD	PT	
c212c-3mm_1000	No0001	2013+370	86ghz	.	o	o	x	o	x	x	x	.	.	.	
c212c-3mm_1001	No0002	2013+370	86ghz	.	o	85	o	x	o	x	x	x	.	.	.
c212c-3mm_1002	No0003	2013+370	86ghz	.	o	o	o	x	o	x	x	x	.	.	.
c212c-3mm_1003	No0004	2013+370	86ghz	.	o	o	o	x	o	90	x	o	.	.	.
c212c-3mm_1004	No0005	BLLAC	86ghz	o	o	o	o	x	o	o	o	o	.	.	.
c212c-3mm_1005	No0006	BLLAC	86ghz	o	o	o	o	x	o	o	o	o	.	.	.
c212c-3mm_1006	No0007	BLLAC	86ghz	.	o	o	o	x	o	o	o	o	.	.	.
c212c-3mm_1007	No0008	BLLAC	86ghz	.	o	o	o	x	o	o	o	o	.	.	.
c212c-3mm_1008	No0009	BLLAC	86ghz	o	o	o	o	x	o	o	o	o	.	.	.
c212c-3mm_1009	No0010	BLLAC	86ghz	o	o	o	o	x	o	o	o	o	.	.	.
c212c-3mm_1010	No0011	BLLAC	86ghz	o	o	o	o	x	o	o	o	o	.	.	.
c212c-3mm_1011	No0012	BLLAC	86ghz	o	o	o	o	x	o	o	o	o	.	.	.
c212c-3mm_1012	No0013	BLLAC	86ghz	o	o	o	o	x	o	o	o	o	.	.	.
c212c-3mm_1013	No0014	3C454.3	86ghz	.	o	o	o	x	o	o	o	o	.	.	.
c212c-3mm_1014	No0015	NGC315	86ghz	.	o	.	.	x	o	o	o	o	.	.	.
c212c-3mm_1015	No0016	3C454.3	86ghz	o	o	o	o	x	o	o	o	o	.	.	.
c212c-3mm_1016	No0017	NGC315	86ghz	o	o	o	o	x	o	o	o	o	.	.	.
c212c-3mm_1017	No0018	3C454.3	86ghz	o	o	o	o	x	o	o	o	o	.	.	.
c212c-3mm_1018	No0019	NGC315	86ghz	o	o	o	o	x	o	o	o	o	.	.	.
c212c-3mm_1019	No0020	3C454.3	86ghz	o	o	o	o	x	o	o	o	o	.	.	.
c212c-3mm_1020	No0021	NGC315	86ghz	o	o	o	o	x	o	o	o	o	.	.	.
c212c-3mm_1021	No0022	3C454.3	86ghz	o	o	o	o	x	o	o	o	o	.	.	.

c212c-3mm_1022	No0023	NGC315	86ghz	o	o	o	o	x	o	o	o	o	.	.	.
.
c212c-3mm_1023	No0024	3C454.3	86ghz	o	o	o	o	x	o	o	o	o	.	.	.
.
c212c-3mm_1024	No0025	NGC315	86ghz	o	o	o	o	x	o	o	o	o	.	.	.
.
c212c-3mm_1025	No0026	3C454.3	86ghz	o	o	o	o	x	o	o	o	o	.	.	.
.
c212c-3mm_1026	No0027	NGC315	86ghz	o	o	o	o	x	o	o	o	o	.	.	.
.
c212c-3mm_1027	No0028	3C454.3	86ghz	o	o	o	o	x	o
.
c212c-3mm_1028	No0029	NGC315	86ghz	o	o	o	o	x	o	o	o	o	.	.	.
.
c212c-3mm_1029	No0030	3C454.3	86ghz	o	o	o	o	x	o
.
c212c-3mm_1030	No0031	NGC315	86ghz	o	o	o	o	x	o	o	o	o	.	.	.
.
c212c-3mm_1031	No0032	3C454.3	86ghz	o	o	o	o	x	o
.
c212c-3mm_1032	No0033	NGC315	86ghz	o	o	o	o	x	o	o	o	o	.	.	.
.
c212c-3mm_1033	No0034	3C454.3	86ghz	o	o	o	o	x	o
.
c212c-3mm_1034	No0035	NGC315	86ghz	o	o	o	o	x	o	o	o	o	.	.	.
.
c212c-3mm_1035	No0036	3C454.3	86ghz	o	o	o	o	x	o
.
c212c-3mm_1036	No0037	NGC315	86ghz	o	o	o	o	x	o	o	o	o	.	.	.
.
c212c-3mm_1037	No0038	3C454.3	86ghz	o	o	22	o	x	o
.
c212c-3mm_1038	No0039	NGC315	86ghz	o	o	o	o	x	o	o	o	o	.	.	.
.
c212c-3mm_1039	No0040	3C454.3	86ghz	.	o	o	o	x	o
.
c212c-3mm_1040	No0041	NGC315	86ghz	.	o	o	o	x	o	o	o	o	.	.	.
.
c212c-3mm_1041	No0042	3C454.3	86ghz	o	o	o	o	x	o
.
c212c-3mm_1042	No0043	NGC315	86ghz	o	o	o	o	x	o
.
c212c-3mm_1043	No0044	3C454.3	86ghz	o	o	o	o	x	o
.
c212c-3mm_1044	No0045	NGC315	86ghz	o	o	o	o	x	o
.
c212c-3mm_1045	No0046	3C454.3	86ghz	o	o	o	o	x	o
.
c212c-3mm_1046	No0047	NGC315	86ghz	o	o	o	o	x	o
.

c212c-3mm_1047	No0048	3C454.3	86ghz	o	o	o	o	x	o
.
c212c-3mm_1048	No0049	NGC315	86ghz	o	o	o	o	x	o
.
c212c-3mm_1049	No0050	3C454.3	86ghz	o	o	o	o	x	o
.
c212c-3mm_1050	No0051	NGC315	86ghz	o	o	o	o	x	o
.
c212c-3mm_1051	No0052	3C454.3	86ghz	o	o	o	o	x	o
.
c212c-3mm_1052	No0053	NGC315	86ghz	93	o	o	o	x	o
.
c212c-3mm_1053	No0054	0235+164	86ghz	o	o	o	o	x	o
.
c212c-3mm_1054	No0055	NGC315	86ghz	o	o	o	o	x	o
.
c212c-3mm_1055	No0056	BLLAC	86ghz	o	o
o	o	o	o	o	o
c212c-3mm_1056	No0058	BLLAC	86ghz	o	o
o	o	o	o	o	o
c212c-3mm_1057	No0060	0235+164	86ghz	o	o	o	o	x	o
.
c212c-3mm_1058	No0061	NGC315	86ghz	o	o	o	o	x	o	o	.
.	o	.
c212c-3mm_1059	No0062	BLLAC	86ghz	o
o	o	o	o	o
c212c-3mm_1060	No0064	0235+164	86ghz	o	o	o	o	x	o
.
c212c-3mm_1061	No0065	NGC315	86ghz	o	o	o	o	x	o	o	.
.	o	.
c212c-3mm_1062	No0066	BLLAC	86ghz	o
o	o	o	o	o
c212c-3mm_1063	No0068	0235+164	86ghz	o	o	55	o	x	o
.
c212c-3mm_1064	No0069	NGC315	86ghz	o	o	o	o	x	o	o	o
o	o	.	o	o	o
c212c-3mm_1065	No0071	0133+476	86ghz	o	o	o	o	x	o	o	o
o	o	o
c212c-3mm_1066	No0072	NGC315	86ghz	o	o	o	o	x	o	o	o
o	o	.	o	o	o
c212c-3mm_1067	No0074	0133+476	86ghz	o	o	o	o	x	o	o	o
o	o	o	o	o	o
c212c-3mm_1068	No0075	NGC315	86ghz	o	o	o	o	x	o	o	o
o	o	o	o	o	o
c212c-3mm_1069	No0077	0133+476	86ghz	o	o	o	o	x	o	o	o
o	o	o	o	o	o
c212c-3mm_1070	No0078	NGC315	86ghz	o	o	o	o	x	o	o	o
o	o	o	o	o	o
c212c-3mm_1071	No0080	0133+476	86ghz	o	o	o	o	x	o	o	o
o	o	o	o	o	o

c212c-3mm_1072	No0081	NGC315	86ghz	o	o	o	o	x	o	.	.	.	o	o	o
o	o	o	.	.	.										
c212c-3mm_1073	No0083	0133+476	86ghz	o	o	x	o	x	o	.	.	.	o	o	o
o	o	o	.	.	.										
c212c-3mm_1074	No0084	NGC315	86ghz	o	o	80	o	x	o	.	.	.	o	o	o
o	o	o	.	.	.										
c212c-3mm_1075	No0086	0133+476	86ghz	o	o	o	o	x	o	.	.	.	o	o	o
o	o	o	.	.	.										
c212c-3mm_1076	No0087	NGC315	86ghz	o	o	o	o	x	o	.	.	.	o	o	o
o	o	o	.	.	.										
c212c-3mm_1077	No0089	0133+476	86ghz	o	o	o	o	x	o	.	.	.	o	o	o
o	o	o	.	.	.										
c212c-3mm_1078	No0090	NGC315	86ghz	o	o	o	o	x	o	.	.	.	o	o	o
o	o	o	.	.	.										
c212c-3mm_1079	No0092	0133+476	86ghz	o	o	o	o	x	o	.	.	.	o	o	o
o	o	o	.	.	.										
c212c-3mm_1080	No0093	NGC315	86ghz	o	o	o	o	x	o	.	.	.	o	o	o
o	o	o	.	.	.										
c212c-3mm_1081	No0095	0133+476	86ghz	o	o	o	o	x	o	.	.	.	o	o	o
o	o	o	.	.	.										
c212c-3mm_1082	No0096	NGC315	86ghz	o	o	o	o	x	o	.	.	.	o	o	o
o	o	o	.	.	.										
c212c-3mm_1083	No0098	0235+164	86ghz	o	o	o	o	x	o	.	.	.	o	o	o
o	o	o	.	.	.										
c212c-3mm_1084	No0099	NGC315	86ghz	o	o	o	o	x	o	.	.	.	o	o	o
o	o	o	.	.	.										
c212c-3mm_1085	No0101	0235+164	86ghz	o	o	o	o	x	o	.	.	.	o	o	o
o	o	o	.	.	.										
c212c-3mm_1086	No0102	NGC315	86ghz	o	o	o	o	x	o	.	.	.	o	o	o
o	o	o	.	.	.										
c212c-3mm_1087	No0104	0235+164	86ghz	o	o	o	o	x	o	.	.	.	o	o	o
o	o	o	.	.	.										
c212c-3mm_1088	No0105	NGC315	86ghz	o	o	o	o	x	o	.	.	.	o	o	o
o	o	o	.	.	.										
c212c-3mm_1089	No0107	0235+164	86ghz	o	o	o	o	x	o	.	.	.	o	o	o
o	o	o	.	.	.										
c212c-3mm_1090	No0108	NGC315	86ghz	o	o	o	o	x	o	.	.	.	o	o	o
o	o	o	.	.	o										
c212c-3mm_1091	No0110	0235+164	86ghz	o	o	o	o	x	o	.	.	.	o	o	o
o	o	o	.	.	.										
c212c-3mm_1092	No0111	NGC315	86ghz	o	o	o	o	x	o	.	.	.	o	o	o
o	o	o	.	.	o										
c212c-3mm_1093	No0113	0235+164	86ghz	o	o	o	.	.	o	.	.	.	o	o	o
o	o	o	.	.	.										
c212c-3mm_1094	No0114	NGC315	86ghz	o	o	o	.	.	o	.	.	.	o	o	o
o	o	o	.	.	o										
c212c-3mm_1095	No0116	0235+164	86ghz	o	o	o
o	o	o	.	.	o										
c212c-3mm_1096	No0117	NGC315	86ghz	o	o	o
o	o	o	.	.	o										

c212c-3mm_1122	No0156	NGC315	86ghz	o	o	o	o	o	o
o	o	o	o	.	.	o										
c212c-3mm_1123	No0158	0059+581	86ghz	o	o	o	o	o	o
o	o	o	o	.	.	o										
c212c-3mm_1124	No0159	NGC315	86ghz	o	o	o	o	o	o
o	o	o	o	.	.	o										
c212c-3mm_1125	No0161	0059+581	86ghz	o	o	o	o	o	o
o	o	o	o	.	.	o										
c212c-3mm_1126	No0162	NGC315	86ghz	o	o	o	o	o	o
o	o	o	o	.	.	o										
c212c-3mm_1127	No0164	0235+164	86ghz	o	o	o	o	o	o
o	o	o	o	.	.	o										
c212c-3mm_1128	No0165	NGC315	86ghz	o	o	o	o	o	o
o	o	o	o	.	.	o										
c212c-3mm_1129	No0167	0235+164	86ghz	o	o	o	o	o	o
o	o	o	o	.	.	o										
c212c-3mm_1130	No0168	NGC315	86ghz	o	o	o	o	o	o
o	o	o	o	.	.	o										
c212c-3mm_1131	No0170	0235+164	86ghz	o	o	o	o	o	o
o	o	o	o	.	.	o										
c212c-3mm_1132	No0171	NGC315	86ghz	o	o	o	o	o	o
o	o	o	o	.	.	o										
c212c-3mm_1133	No0173	0235+164	86ghz	o	o	o	o	o	o
o	o	o	o	.	.	o										
c212c-3mm_1134	No0174	NGC315	86ghz	o	o	o	o	o	o
o	o	o	o	.	.	o										
c212c-3mm_1135	No0176	0235+164	86ghz	o	o	o	o	o	o
o	o	o	o	.	.	o										
c212c-3mm_1136	No0177	NGC315	86ghz	o	o	o	o	o	o
o	o	o	o	.	.	o										
c212c-3mm_1137	No0179	0235+164	86ghz	o	o	o	o	o	o
o	o	o	o	.	.	o										
c212c-3mm_1138	No0180	NGC315	86ghz	o	o	o	.	.	o
o	o	o	o	.	.	o										
c212c-3mm_1139	No0182	3C84	86ghz	o	o	o	o	o	o
o	o	o	o	.	.	o										

7mm

EF ON YS PV NN MH KY KU KT NL FD PT

LA KP OV BR HN SC MK																		
c212c-7mm_1000	No0057	BLLAC	43ghz	o	o	o	
o	o	o	o	o	o	.												
c212c-7mm_1001	No0059	BLLAC	43ghz	o	o	
o	o	o	o	o	o	.												
c212c-7mm_1002	No0063	BLLAC	43ghz	o	o	o	
o	o	o	o	o	o	.												
c212c-7mm_1003	No0067	BLLAC	43ghz	o	o	
o	o	o	o	o	o	.												
c212c-7mm_1004	No0070	NGC315	43ghz	o	o	o

