

## T192A Correlation Report

### General information

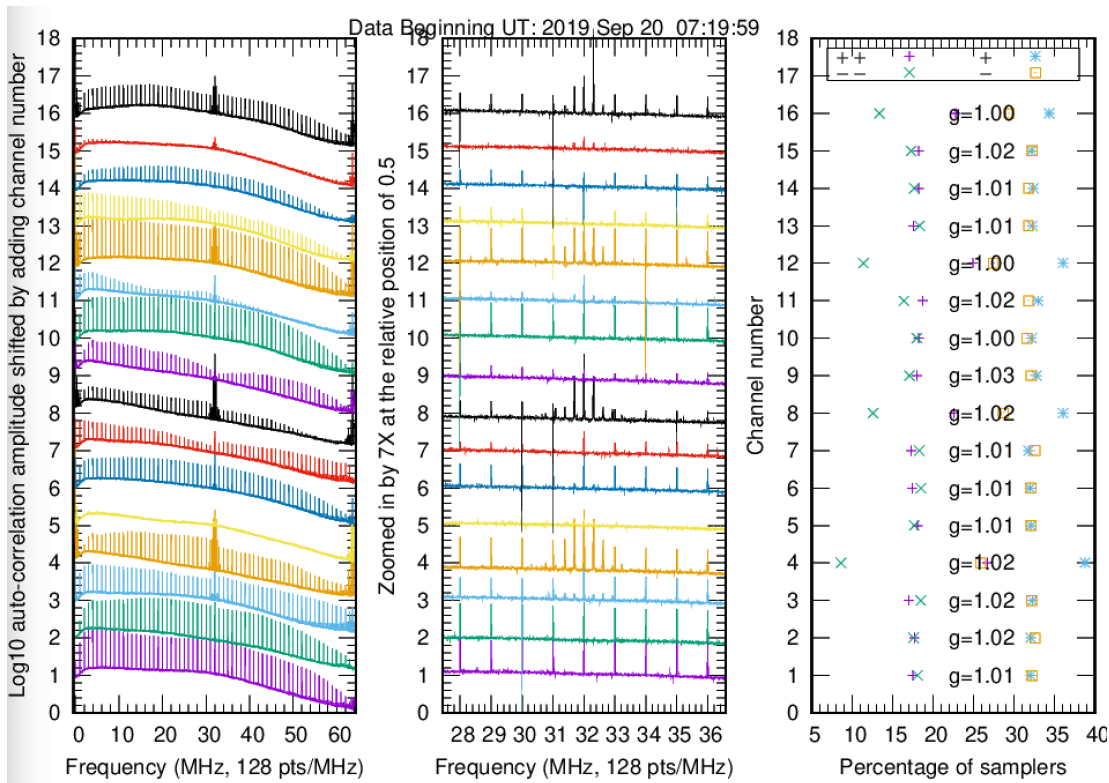
- the purpose of this test is to check 4Gbps mode, firmware etc. for Ef, On and Mh at 3mm before the fall GMVA session
- 8 scans, each 5 min long, on one source 3C84
- configuration is similar to [F191A](#)

### Fringes

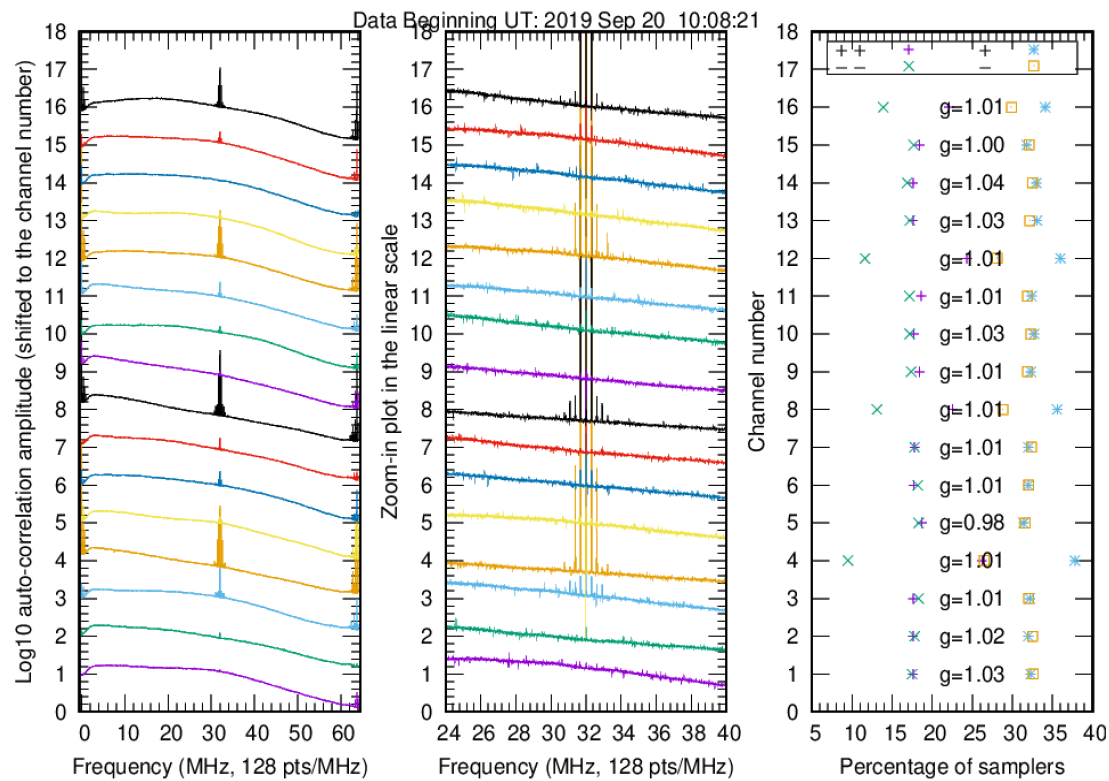
Station	Code	Fringes	Plots	Comments
Ef	B	yes	<a href="#">No0002_all.pdf</a> <a href="#">No0008_all.pdf</a>	clear skies and sunny late start, problems with the synthesizer settings of the receiver. scan 1 missed scan 6 was not on source
On	X	no	<a href="#">No0002_all.pdf</a> <a href="#">No0008_all.pdf</a>	cloudy Tsys high, ~ 830K, by the end of the test lowered down to ~400K. No fringes found, probably due to bad loading of firmware. Bad loading of 64 MHz filters caused significant sensitivity loss.
Mh	Z	yes	<a href="#">No0002_all.pdf</a> <a href="#">No0008_all.pdf</a>	nice weather

### Notes

On banspass shapes in the beginning of the test:



...after the end of the test with p-cal off:



and after reloading the firmware:

