

MM013A Correlation Report

General information

- A part of [C181A](#)
- no ALMA participation in this subproject
- Targets: OJ287, 3C345, 1510-089, 1633+38, 0235+164, 3C120
- Session info: <http://www3.mpifr-bonn.mpg.de/div/vlbi/globalmm/>
- Station feedback: http://www3.mpifr-bonn.mpg.de/div/vlbi/globalmm/sessions/apr18/feedback_apr18.asc
- GBT calibration info (Tsys files for download) and other related information for this session can be found here: <https://safe.nrao.edu/wiki/bin/view/GB/Observing/WbandVLBACal/C181>
- Because this experiment was processed together with ALMA observations, *special processing* was applied to all data in order to correlate mismatching frequency setups of ALMA and other GMVA stations. See details [here](#). This should not have influenced non-ALMA scans.

Current Status

Correlation finished, data **released** on 12/12/2018.

A **second** data release, with a problem, spotted in the original release, corrected, was made on 31/01/2019.

Fringes

Station	Code	Fringes	Plots	Comments
Ef	B	yes	<p>Fringe overview of all baselines (all of C181A) including Ef in LL (left for each baseline) and RR (right for each baseline). Legend: white - scheduled, but no data, blue - no fringe, red-green - fringes of different quality. D -- fourfit error, in this case due to mixing upper and lower subbands in the KVN compatibility mode, no real problem with the data.</p> <p>c181a FRINGE RfAnt Ef LLRR AllSrc.pdf</p> <p>Examples of fourfit fringe plots:</p> <p>preliminary:</p> <p>c181a_No0055_3C345_BP_LL.pdf, c181a_No0055_3C345_BP_LR.pdf, c181a_No0055_3C345_BP_RL.pdf, c181a_No0055_3C345_BP_RR.pdf.</p> <p>final:</p> <p>No final fringe plots due to fourfit error</p> <p>Same for all antennas below unless otherwise noted.</p>	<p>In the plots EVN is "missing" in most baselines. This is due to a fourfit error, the baselines are missing only from some of the diagnostic plots, but are present in the final correlation products.</p>
On	X	yes	<p>c181a FRINGE RfAnt On LLRR AllSrc.pdf</p> <p>preliminary:</p> <p>c181a_No0055_3C345_XP_LL.pdf, c181a_No0055_3C345_XP_LR.pdf, c181a_No0055_3C345_XP_RL.pdf, c181a_No0055_3C345_XP_RR.pdf.</p>	<p>In the plots EVN is "missing" in most baselines. This is due to a fourfit error, the baselines are missing only from some of the diagnostic plots,</p>

Station	Code	Fringes	Plots	Comments
			<p>final:</p> <p>No final fringe plots due to fourfit error</p>	<p>but are present in the final correlation products.</p>
Ys	Y	yes	<p>c181a_FRINGE_RfAnt_Ys_LLRR_AllSrc.pdf</p> <p>No final fringe plots due to fourfit error</p>	<p>As usual, Ys observed LCP only, but it was also recorded as fake RCP, that's why there are common Ys "right" to other antenna's left fringes.</p> <p>In the plots EVN is "missing" in most baselines. This is due to a fourfit error, the baselines are missing only from some of the diagnostic plots, but are present in the final correlation products.</p>
Mh	Z	yes	<p>c181a_FRINGE_RfAnt_Mh_LLRR_AllSrc.pdf</p> <p>preliminary:</p> <p>c181a_No0055_3C345_ZP_LL.pdf, c181a_No0055_3C345_ZP_LR.pdf, c181a_No0055_3C345_ZP_RL.pdf, c181a_No0055_3C345_ZP_RR.pdf.</p> <p>final:</p> <p>No final fringe plots due to fourfit error</p>	<p>In the plots EVN is "missing" in most baselines. This is due to a fourfit error, the baselines are missing only from some of the diagnostic plots, but are present in the final correlation products.</p>
Pv	P	yes	<p>c181a_FRINGE_RfAnt_Pv_LLRR_AllSrc.pdf</p> <p>preliminary:</p> <p>c181a_No0055_3C345_BP_LL.pdf, c181a_No0055_3C345_BP_LR.pdf, c181a_No0055_3C345_BP_RL.pdf, c181a_No0055_3C345_BP_RR.pdf. c181a_No0055_3C345_XP_LL.pdf, c181a_No0055_3C345_XP_LR.pdf, c181a_No0055_3C345_XP_RL.pdf, c181a_No0055_3C345_XP_RR.pdf. c181a_No0055_3C345_ZP_LL.pdf, c181a_No0055_3C345_ZP_LR.pdf, c181a_No0055_3C345_ZP_RL.pdf, c181a_No0055_3C345_ZP_RR.pdf.</p>	<p>In the plots EVN is "missing" in most baselines. This is due to a fourfit error, the baselines are missing only from some of the diagnostic plots, but are present in the final correlation products.</p>

Station	Code	Fringes	Plots	Comments
			<p>c181a_No0055_3C345_fp_LL.pdf, c181a_No0055_3C345_fp_RR.pdf, no LR or RL fringe</p> <p>c181a_No0055_3C345_oP_LL.pdf, c181a_No0055_3C345_oP_LR.pdf, no RL fringe, c181a_No0055_3C345_oP_RR.pdf.</p> <p>final: No final fringe plots due to fourfit error</p>	
VLBA: Br	b	yes	<p>c181a_FRINGE_RfAnt_Br_LLRR_AllSrc.pdf</p> <p>preliminary: c181a_No0120_3C345_bg_LL.pdf, c181a_No0120_3C345_bg_LR.pdf, c181a_No0120_3C345_bg_RL.pdf, c181a_No0120_3C345_bg_RR.pdf</p> <p>final: c181a_No0008_OJ287_bp_LL.pdf, c181a_No0008_OJ287_bp_RR.pdf, no LR or RL fringe</p> <p>c181a_No0065_1633+38_bf_LL.pdf, c181a_No0065_1633+38_bf_RR.pdf, no LR or RL fringe</p> <p>c181a_No0065_1633+38_bk_LL.pdf, c181a_No0065_1633+38_bk_LR.pdf, no RL fringe, c181a_No0065_1633+38_bk_RR.pdf</p> <p>c181a_No0065_1633+38_bl_LL.pdf, c181a_No0065_1633+38_bl_LR.pdf, no RL fringe, c181a_No0065_1633+38_bl_RR.pdf</p> <p>c181a_No0065_1633+38_bn_LL.pdf, c181a_No0065_1633+38_bn_RR.pdf, no LR or RL fringes</p> <p>c181a_No0065_1633+38_bo_LL.pdf, c181a_No0065_1633+38_bo_RR.pdf, no LR or RL fringes</p> <p>c181a_No0065_1633+38_bp_LL.pdf, c181a_No0065_1633+38_bp_LR.pdf, no RL fringe, c181a_No0065_1633+38_bp_RR.pdf</p>	all VLBA stations were starting recording late, software glitch: low data weight, possible other problems
VLBA: Fd	f	yes	<p>c181a_FRINGE_RfAnt_Fd_LLRR_AllSrc.pdf</p> <p>preliminary: c181a_No0055_3C345_fp_LL.pdf, c181a_No0055_3C345_fp_RR.pdf, no LR or RL fringe</p> <p>final:</p>	all VLBA stations were starting recording late, software glitch: low data weight, possible other problems

Station	Code	Fringes	Plots	Comments
			c181a No0008 OJ287 fp LL.pdf , c181a No0008 OJ287 fp LR.pdf , c181a No0008 OJ287 fp RL.pdf , c181a No0008 OJ287 fp RR.pdf c181a No0010 OJ287 fp LL.pdf , c181a No0010 OJ287 fp LR.pdf , c181a No0010 OJ287 fp RL.pdf , c181a No0010 OJ287 fp RR.pdf c181a No0065 1633+38 bf LL.pdf , c181a No0065 1633+38 bf RR.pdf , no LR or RL fringe	
VLBA: Kp	k	yes	c181a FRINGE RfAnt Kp LLRR AllSrc.pdf c181a No0065 1633+38 bk LL.pdf , c181a No0065 1633+38 bk LR.pdf , no RL fringe, c181a No0065 1633+38 bk RR.pdf c181a No0114 3C345 gk LL.pdf , c181a No0114 3C345 gk LR.pdf , c181a No0114 3C345 gk RL.pdf , c181a No0114 3C345 gk RR.pdf	all VLBA stations were starting recording late, software glitch: low data weight, possible other problems
VLBA: La	l	yes	c181a FRINGE RfAnt La LLRR AllSrc.pdf c181a No0065 1633+38 bl LL.pdf , c181a No0065 1633+38 bl LR.pdf , no RL fringe, c181a No0065 1633+38 bl RR.pdf c181a No0114 3C345 gl LL.pdf , c181a No0114 3C345 gl LR.pdf , c181a No0114 3C345 gl RL.pdf , c181a No0114 3C345 gl RR.pdf	all VLBA stations were starting recording late, software glitch: low data weight, possible other problems
VLBA: Mk	m	yes	c181a FRINGE RfAnt Mk LLRR AllSrc.pdf c181a No0008 OJ287 mp LL.pdf , no LR, RL or RR fringe c181a No0089 1633+38 mo LL.pdf , c181a No0089 1633+38 mo RR.pdf , no LR or RL fringes c181a No0089 1633+38 mp LL.pdf , c181a No0089 1633+38 mp RR.pdf , no LR or RL fringes	all VLBA stations were starting recording late, software glitch: low data weight, possible other problems
VLBA: Nl	n	yes	c181a FRINGE RfAnt Nl LLRR AllSrc.pdf c181a No0008 OJ287 np LL.pdf , c181a No0008 OJ287 np RR.pdf , no LR or RL fringes c181a No0010 OJ287 np LL.pdf , c181a No0010 OJ287 np RR.pdf , no LR or RL fringes c181a No0065 1633+38 bn LL.pdf , c181a No0065 1633+38 bn RR.pdf , no LR or RL fringes	all VLBA stations were starting recording late, software glitch: low data weight, possible other problems

Station	Code	Fringes	Plots	Comments
VLBA: Ov	o	yes	<p>c181a FRINGE RfAnt Ov LLRR AllSrc.pdf</p> <p>preliminary:</p> <p>c181a No0055 3C345 oP LL.pdf, c181a No0055 3C345 oP LR.pdf, no RL fringe, c181a No0055 3C345 oP RR.pdf.</p> <p>final:</p> <p>c181a No0008 OJ287 op LL.pdf, c181a No0008 OJ287 op LR.pdf, c181a No0008 OJ287 op RL.pdf, c181a No0008 OJ287 op RR.pdf</p> <p>c181a No0010 OJ287 op LL.pdf, c181a No0010 OJ287 op RR.pdf, no LR or RL fringes</p> <p>c181a No0065 1633+38 bo LL.pdf, c181a No0065 1633+38 bo RR.pdf, no LR or RL fringes</p> <p>c181a No0089 1633+38 mo LL.pdf, c181a No0089 1633+38 mo RR.pdf, no LR or RL fringes</p> <p>c181a No0114 3C345 go LL.pdf, c181a No0114 3C345 go LR.pdf, c181a No0114 3C345 go RL.pdf, c181a No0114 3C345 go RR.pdf</p>	all VLBA stations were starting recording late, software glitch: low data weight, possible other problems
VLBA: Pt	p	yes	<p>c181a FRINGE RfAnt Pt LLRR AllSrc.pdf</p> <p>preliminary:</p> <p>c181a No0120 3C345 gp LL.pdf, c181a No0120 3C345 gp LR.pdf, c181a No0120 3C345 gp RL.pdf, c181a No0120 3C345 gp RR.pdf</p> <p>final:</p> <p>c181a No0008 OJ287 bp LL.pdf, c181a No0008 OJ287 bp RR.pdf, no LR or RL fringe</p> <p>c181a No0008 OJ287 fp LL.pdf, c181a No0008 OJ287 fp LR.pdf, c181a No0008 OJ287 fp RL.pdf, c181a No0008 OJ287 fp RR.pdf</p> <p>c181a No0010 OJ287 fp LL.pdf, c181a No0010 OJ287 fp LR.pdf, c181a No0010 OJ287 fp RL.pdf, c181a No0010 OJ287 fp RR.pdf</p> <p>c181a No0008 OJ287 mp LL.pdf, no LR, RL or RR fringe</p> <p>c181a No0008 OJ287 Gp LL.pdf, c181a No0008 OJ287 Gp LR.pdf, c181a No0008 OJ287 Gp RL.pdf, c181a No0008 OJ287 Gp RR.pdf</p> <p>c181a No0010 OJ287 Gp LL.pdf, c181a No0010 OJ287 Gp LR.pdf, no RL fringe, c181a No0010 OJ287 Gp RR.pdf</p>	all VLBA stations were starting recording late, software glitch: low data weight, possible other problems

Station	Code	Fringes	Plots	Comments
			<p>c181a No0008 OJ287 np LL.pdf, c181a No0008 OJ287 np RR.pdf, no LR or RL fringes</p> <p>c181a No0008 OJ287 op LL.pdf, c181a No0008 OJ287 op LR.pdf, c181a No0008 OJ287 op RL.pdf, c181a No0008 OJ287 op RR.pdf</p> <p>c181a No0010 OJ287 np LL.pdf, c181a No0010 OJ287 np RR.pdf, no LR or RL fringes</p> <p>c181a No0010 OJ287 op LL.pdf, c181a No0010 OJ287 op RR.pdf, no LR or RL fringes</p> <p>c181a No0065 1633+38 bp LL.pdf, c181a No0065 1633+38 bp LR.pdf, no RL fringe, c181a No0065 1633+38 bp RR.pdf</p> <p>c181a No0089 1633+38 mp LL.pdf, c181a No0089 1633+38 mp RR.pdf, no LR or RL fringes</p> <p>c181a No0114 3C345 gp LL.pdf, c181a No0114 3C345 gp LR.pdf, c181a No0114 3C345 gp RL.pdf, c181a No0114 3C345 gp RR.pdf</p>	
GBT: Gb	G	yes	<p>c181a FRINGE RfAnt Gb LLRR AllSrc.pdf</p> <p>c181a No0008 OJ287 Gp LL.pdf, c181a No0008 OJ287 Gp LR.pdf, c181a No0008 OJ287 Gp RL.pdf, c181a No0008 OJ287 Gp RR.pdf</p> <p>c181a No0010 OJ287 Gp LL.pdf, c181a No0010 OJ287 Gp LR.pdf, no RL fringe, c181a No0010 OJ287 Gp RR.pdf</p>	only present for scans 3, 5, 8, and 10
GLT: Gl	g	yes	<p>c181a FRINGE RfAnt Gl LLRR AllSrc.pdf</p> <p>preliminary:</p> <p>c181a No0120 3C345 bg LL.pdf, c181a No0120 3C345 bg LR.pdf, c181a No0120 3C345 bg RL.pdf, c181a No0120 3C345 bg RR.pdf</p> <p>c181a No0120 3C345 gp LL.pdf, c181a No0120 3C345 gp LR.pdf, c181a No0120 3C345 gp RL.pdf, c181a No0120 3C345 gp RR.pdf</p> <p>final:</p> <p>c181a No0114 3C345 gk LL.pdf, c181a No0114 3C345 gk LR.pdf, c181a No0114 3C345 gk RL.pdf, c181a No0114 3C345 gk RR.pdf</p> <p>c181a No0114 3C345 gl LL.pdf, c181a No0114 3C345 gl LR.pdf, c181a No0114 3C345 gl RL.pdf, c181a No0114 3C345 gl RR.pdf</p>	Data analysis has shown that GLT recorded in unknown polarization instead of circular (most probably unknown elliptic). At this moment IT SHOULD NOT BE USED FOR ANY POLARIMETRY and in general dealt with very carefully.

Station	Code	Fringes	Plots	Comments
			c181a No0114 3C345 go LL.pdf , c181a No0114 3C345 go LR.pdf , c181a No0114 3C345 go RL.pdf , c181a No0114 3C345 go RR.pdf c181a No0114 3C345 gp LL.pdf , c181a No0114 3C345 gp LR.pdf , c181a No0114 3C345 gp RL.pdf , c181a No0114 3C345 gp RR.pdf	
KVN: Kt	t	no	c181a FRINGE RfAnt Kt LLRR AllSrc.pdf -----	no fringes detected
KVN: Ku	u	yes	c181a FRINGE RfAnt Ku LLRR AllSrc.pdf c181a No0134 1633+38 uy LL.pdf , c181a No0134 1633+38 uy LR.pdf , c181a No0134 1633+38 uy RL.pdf , c181a No0134 1633+38 uy RR.pdf	only weak KuKy fringes in scans 134 and 136
KVN: Ky	y	yes	c181a FRINGE RfAnt Ky LLRR AllSrc.pdf c181a No0134 1633+38 uy LL.pdf , c181a No0134 1633+38 uy LR.pdf , c181a No0134 1633+38 uy RL.pdf , c181a No0134 1633+38 uy RR.pdf	only weak KuKy fringes in scans 134 and 136

Notes

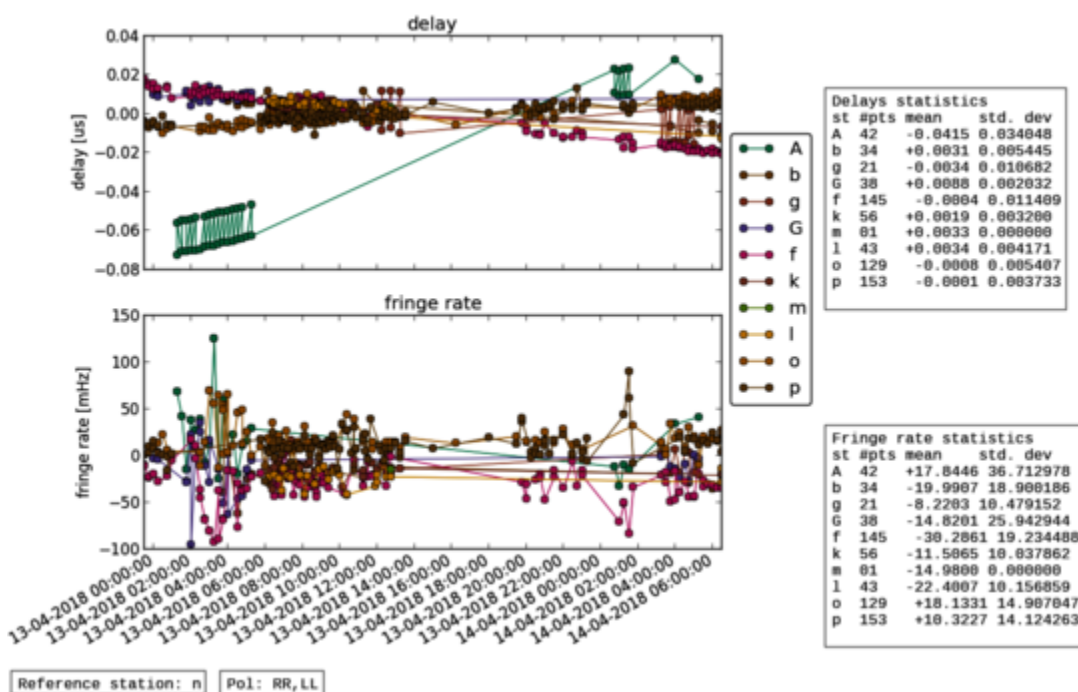
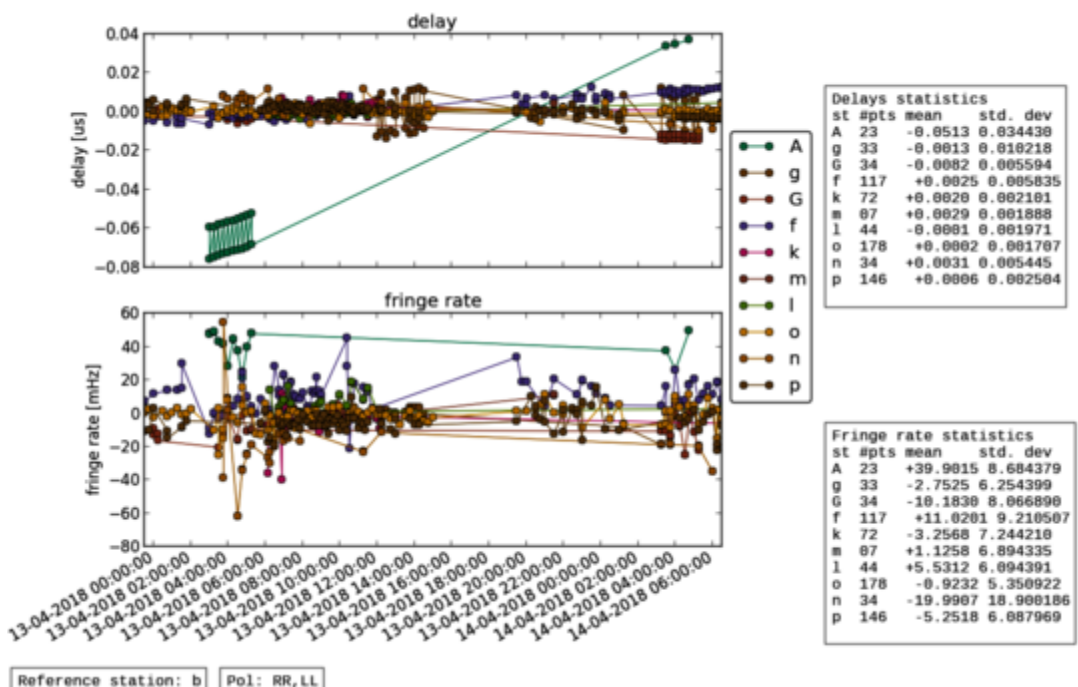
There were problems with some diagnostic plots of this experiment due to yet poorly understood errors of fourfit and other HOPS components. But this does not change the quality of the final correlation products. *(These issues were **fixed** in the second data release of 31/01/2019)*

GLT participated in this session for the first time as a test, and serious problems were detected when analysing its data. Be very careful when using them.

For technical reasons the correlation output is saved as 7 different fits files, see their content below in the plist section.

Post-Correlation checks

Residuals



FITS completeness (pclist)

legend:

- o -- station scheduled and fully accounted for in the fits file
- 42 (or another number) -- station scheduled, but data found only for 42% of the scheduled interval
- x -- station scheduled, but corresponding entry not found in the fits file
- . -- station not scheduled

mm013a_setup1.fits:

				GB	EF	ON	YS	PV	MH	GL	NL	FD	PT	LA	OV	KP	BR	MK	KY	KU	KT
c181a_002D2D	No0003	OJ287	3mm_RDBE	o	x	76	76	76	76	76	76	76
c181a_004D2D	No0005	OJ287	3mm_RDBE	o	x	76	76	76	76	76	76	76
c181a_006D2D	No0008	OJ287	3mm_RDBE	o	x	76	76	76	76	85	76	85	85	.	.	.
c181a_008D2D	No0010	OJ287	3mm_RDBE	o	x	66	66	66	66	66	66	66	66	.	.	.
c181a_010D2D	No0013	OJ287	3mm_RDBE	x	66	66	66	66	66	66	66	66	.	.	.
c181a_012D2D	No0016	OJ287	3mm_RDBE	x	76	76	76	76	76	76	76	76	.	.	.
c181a_014D2D	No0018	OJ287	3mm_RDBE	x	76	76	76	76	76	76	76	76	.	.	.
c181a_016D2D	No0020	OJ287	3mm_RDBE	x	.	76	76	76	76	76	76	76	.	.	.
c181a_018D2D	No0023	OJ287	3mm_RDBE	x	.	76	76	76	76	76	76	76	.	.	.
c181a_020D2D	No0025	OJ287	3mm_RDBE	x	.	.	76	76	76	76	76	76	.	.	.
c181a_022D2D	No0028	OJ287	3mm_RDBE	x	.	.	76	76	76	76	76	76	.	.	.
c181a_031D2D	No0041	3C345	3mm_RDBE	.	o	o	.	.	o	x
c181a_033D2D	No0043	3C345	3mm_RDBE	.	o	o	x	x	o	x
c181a_035D2D	No0046	3C345	3mm_RDBE	.	o	o	x	x	o	x
c181a_037D2D	No0048	3C345	3mm_RDBE	.	o	o	x	x	o	x
c181a_039D2D	No0051	3C345	3mm_RDBE	.	o	o	x	x	o	x
c181a_041D2D	No0054	3C345	3mm_RDBE	.	o	o	x	o	o	x
c181a_042D2D	No0055	3C345	3mm_RDBE	.	o	o	x	o	o	x	86	86	x	80	80	86	80
c181a_044D2D	No0057	1633+38	3mm_RDBE	.	o	o	x	o	o	x	53	53	53	53	o	53	o
c181a_046D2D	No0059	3C345	3mm_RDBE	.	o	o	x	o	o	x	53	53	53	53	o	53	o
c181a_048D2D	No0061	1633+38	3mm_RDBE	.	o	o	o	o	o	x	o	o	o	o	o	o	o
c181a_050D2D	No0063	3C345	3mm_RDBE	.	o	o	o	o	o	x	o	o	o	o	o	o	o
c181a_088D2D	No0101	1633+38	3mm_RDBE	x	66	66	66	66	73	66	73	60	.	.	.
c181a_090D2D	No0103	3C345	3mm_RDBE	x	66	66	66	66	o	66	o	o	.	.	.
c181a_092D2D	No0105	1633+38	3mm_RDBE	x	66	66	66	60	66	66	66	66	.	.	.
c181a_095D2D	No0108	3C345	3mm_RDBE	o	60	60	60	60	66	60	66	66	.	.	.
c181a_098D2D	No0111	1633+38	3mm_RDBE	o	60	60	60	60	60	60	60	60	o	o	o
c181a_101D2D	No0114	3C345	3mm_RDBE	o	60	60	60	60	60	60	60	60	o	o	o
c181a_104D2D	No0117	1633+38	3mm_RDBE	o	60	60	60	60	60	60	60	60	o	o	o
c181a_107D2D	No0120	3C345	3mm_RDBE	o	71	71	71	71	71	71	71	71	o	o	o
c181a_109D2D	No0122	1633+38	3mm_RDBE	o	80	80	80	80	85	80	85	85	o	o	o
c181a_111D2D	No0124	3C345	3mm_RDBE	o	80	80	80	80	85	80	85	85	o	o	o
c181a_113D2D	No0126	1633+38	3mm_RDBE	o	.	80	80	80	85	80	85	85	o	o	o
c181a_115D2D	No0128	3C345	3mm_RDBE	o	.	80	80	80	85	80	85	85	o	o	o
c181a_117D2D	No0130	1633+38	3mm_RDBE	o	.	76	76	76	85	76	85	85	o	o	o
c181a_119D2D	No0132	3C345	3mm_RDBE	o	.	76	76	76	85	76	85	85	o	o	o
c181a_121D2D	No0134	1633+38	3mm_RDBE	o	.	.	76	.	85	76	85	85	o	o	o
c181a_123D2D	No0136	3C345	3mm_RDBE	o	85	76	85	85	o	o	o
c181a_124D2D	No0137	0235+164	3mm_RDBE	.	o	x	o	o	o	.	71	71	71	71
c181a_129D2D	No0142	0235+164	3mm_RDBE	.	o	x	o	o	o	x	71	71	71	71	85	71	85
c181a_130D2D	No0143	3C120	3mm_RDBE	.	o	x	o	o	o	.	71
c181a_131D2D	No0144	0235+164	3mm_RDBE	x	.	71	71	71	71	71	71
c181a_132D2D	No0145	0235+164	3mm_RDBE	.	o	x	o	o	o	x	76	76	76	71	71	76	71
c181a_140D2D	No0153	0235+164	3mm_RDBE	.	.	.	o	o	.	x	76	76	76	76	76	76	76	76	.	.	.
c181a_142D2D	No0155	0235+164	3mm_RDBE	.	.	.	o	.	.	x	76	76	76	76	76	76	76	76	.	.	.
c181a_144D2D	No0157	0235+164	3mm_RDBE	x	83	83	83	83	83	83	83	83	.	.	.

				GB	EF	ON	YS	PV	MH	GL	NL	FD	PT	LA	OV	KP	BR	MK	KY	KU	KT
c181a_074D2D	No0087	3C345	3mm_RDBE	.	o	o	o	o	o	x	o	o	o	o	o	o	o	o	.	.	.
c181a_076D2D	No0089	1633+38	3mm_RDBE	.	o	o	o	o	o	x	o	o	o	o	o	o	o	o	.	.	.
c181a_078D2D	No0091	3C345	3mm_RDBE	.	o	o	o	o	o	x	o	o	o	o	o	o	o	o	.	.	.

mm013a_setup6.fits:

				GB	EF	ON	YS	PV	MH	GL	NL	FD	PT	LA	OV	KP	BR	MK	KY	KU	KT
c181a_080D2D	No0093	1633+38	3mm_RDBE	.	o	o	o	o	o	x	66	66	66	66	66	66	66	66	.	.	.
c181a_082D2D	No0095	3C345	3mm_RDBE	.	o	o	o	o	o	x	o	o	o	o	60	o	60	60	.	.	.
c181a_084D2D	No0097	1633+38	3mm_RDBE	.	.	o	o	.	o	x	o	o	o	o	60	o	60	60	.	.	.
c181a_086D2D	No0099	3C345	3mm_RDBE	.	.	o	.	.	o	x	o	o	o	o	60	o	60	60	.	.	.
c181a_094D2D	No0107	0235+164	3mm_RDBE	.	o	o	o	o	o
c181a_097D2D	No0110	3C120	3mm_RDBE	.	o	o	o	o	o
c181a_100D2D	No0113	0235+164	3mm_RDBE	.	o	o	o	o	o
c181a_103D2D	No0116	3C120	3mm_RDBE	.	o	o	o	o	o
c181a_106D2D	No0119	0235+164	3mm_RDBE	.	o	o	o	o	o

mm013a_setup7.fits:

				GB	EF	ON	YS	PV	MH	GL	NL	FD	PT	LA	OV	KP	BR	MK	KY	KU	KT
c181a_108D2D	No0121	3C120	3mm_RDBE	.	o	o	o	o	o
c181a_110D2D	No0123	0235+164	3mm_RDBE	.	o	o	o	o	o
c181a_112D2D	No0125	3C120	3mm_RDBE	.	o	o	o	o	o
c181a_114D2D	No0127	0235+164	3mm_RDBE	.	o	o	o	o	o	.	76
c181a_116D2D	No0129	0235+164	3mm_RDBE	.	o	o	o	o	o	.	76
c181a_118D2D	No0131	0235+164	3mm_RDBE	.	o	o	o	o	o	.	76
c181a_120D2D	No0133	0235+164	3mm_RDBE	.	o	o	o	o	o	.	76
c181a_122D2D	No0135	0235+164	3mm_RDBE	.	o	o	o	o	o	.	95	95	.	95
c181a_125D2D	No0138	0235+164	3mm_RDBE	.	o	o	o	o	o	x	71	71	71	71	71	71	71
c181a_126D2D	No0139	0235+164	3mm_RDBE	.	o	o	o	o	o	x	71	71	71	71	71	71	71
c181a_127D2D	No0140	0235+164	3mm_RDBE	.	o	o	o	o	o	x	71	71	71	71	71	71	71
c181a_128D2D	No0141	0235+164	3mm_RDBE	.	o	o	o	o	o	x	71	71	71	71	71	71	71
c181a_133D2D	No0146	3C120	3mm_RDBE	.	o	o	o	o	o	x	71	71	71	71
c181a_134D2D	No0147	0235+164	3mm_RDBE	.	o	90	o	o	o	x	76	76	76	76	71	76	71
c181a_135D2D	No0148	3C120	3mm_RDBE	.	o	o	o	o	o	x	71	71	71	71	71	71
c181a_136D2D	No0149	0235+164	3mm_RDBE	.	o	o	o	o	o	x	76	76	76	76	71	76	71
c181a_137D2D	No0150	3C120	3mm_RDBE	.	o	o	o	o	o	x	71	71	71	71	71	71	71
c181a_138D2D	No0151	0235+164	3mm_RDBE	.	o	o	o	o	.	x	76	76	76	76	90	76	90	90	.	.	.
c181a_139D2D	No0152	3C120	3mm_RDBE	.	o	o	o	o	.	x	71	71	71	71	71	71	71
c181a_141D2D	No0154	3C120	3mm_RDBE	.	o	o	o	o	.	x	71	71	71	71	71	71	71
c181a_143D2D	No0156	3C120	3mm_RDBE	.	o	o	o	o	.	x	71	71	71	71	71	71	71