

# C181E Correlation Report

## General information

- Consists of only one subproject: MM013D.
- Session info: <http://www3.mpifr-bonn.mpg.de/div/vlbi/globalmm/>
- Station feedback: [http://www3.mpifr-bonn.mpg.de/div/vlbi/globalmm/sessions/apr18/feedback\\_apr18.asc](http://www3.mpifr-bonn.mpg.de/div/vlbi/globalmm/sessions/apr18/feedback_apr18.asc)
- GBT calibration info (Tsyes files for download) and other related information for this session can be found here: <https://safe.nrao.edu/wiki/bin/view/GB/Observing/WbandVLBACal/C181>
- The only correlation block of C181 that was processed in the usual way since ALMA did not participate in it.

## Current Status

Correlation finished, data **released** on 10/12/2018.

## Fringes

Station	Code	Fringes	Plots	Comments
Ef	B	yes	<p>Fringe overview of all baselines of this antenna in LL (left for each baseline) and RR (right for each baseline). Legend: white - scheduled, but no data, blue - no fringe, red-green - fringes of different quality. D -- fourfit error, in this case due to mixing upper and lower subbands in the KVN compatibility mode, no real problem with the data.:</p> <p><a href="#">c181e_FRINGE_RfAnt_Ef_LLRR_AllSrc.pdf</a></p> <p>Examples of fourfit fringe plots:</p> <p><a href="#">c181e_No0049_3C454.3_bB_LL.pdf</a>, <a href="#">c181e_No0049_3C454.3_bB_RR.pdf</a>, no LR or RL fringes</p> <p><a href="#">c181e_No0041_3C454.3_Bf_LL.pdf</a>, <a href="#">c181e_No0041_3C454.3_Bf_RR.pdf</a>, no LR or RL fringes</p> <p><a href="#">c181e_No0041_3C454.3_Bk_LL.pdf</a>, <a href="#">c181e_No0041_3C454.3_Bk_RR.pdf</a>, no LR or RL fringes</p> <p><a href="#">c181e_No0041_3C454.3_Bl_LL.pdf</a>, <a href="#">c181e_No0041_3C454.3_Bl_LR.pdf</a>, no fringe in RL, <a href="#">c181e_No0041_3C454.3_Bl_RR.pdf</a></p> <p><a href="#">c181e_No0041_3C454.3_Bn_LL.pdf</a>, <a href="#">c181e_No0041_3C454.3_Bn_RR.pdf</a>, no LR or RL fringes</p> <p><a href="#">c181e_No0041_3C454.3_Bo_LL.pdf</a>, <a href="#">c181e_No0041_3C454.3_Bo_RR.pdf</a>, no LR or RL fringes</p> <p><a href="#">c181e_No0041_3C454.3_Bp_LL.pdf</a>, <a href="#">c181e_No0041_3C454.3_Bp_RR.pdf</a>, no LR or RL fringes</p>	

Station	Code	Fringes	Plots	Comments
			<p><a href="#">c181e No0041 3C454.3 BX LL.pdf</a>, <a href="#">c181e No0041 3C454.3 BX LR.pdf</a>,  <a href="#">c181e No0041 3C454.3 BX RL.pdf</a>, <a href="#">c181e No0041 3C454.3 BX RR.pdf</a></p> <p><a href="#">c181e No0041 3C454.3 BY LL.pdf</a>, <a href="#">c181e No0041 3C454.3 BY LR.pdf</a>,  no RL or RR fringes</p> <p><a href="#">c181e No0041 3C454.3 BZ LL.pdf</a>, <a href="#">c181e No0041 3C454.3 BZ LR.pdf</a>,  <a href="#">c181e No0041 3C454.3 BZ RL.pdf</a>, <a href="#">c181e No0041 3C454.3 BZ RR.pdf</a></p> <p><a href="#">c181e No0055 3C454.3 BP LL.pdf</a>, <a href="#">c181e No0055 3C454.3 BP LR.pdf</a>,  <a href="#">c181e No0055 3C454.3 BP RL.pdf</a>, <a href="#">c181e No0055 3C454.3 BP RR.pdf</a></p> <p><a href="#">c181e No0077 0716+714 Bt LR.pdf</a>, <a href="#">c181e No0077 0716+714 Bt RL.pdf</a>,  no LL or RR fringes</p> <p><a href="#">c181e No0077 0716+714 Bu LL.pdf</a>, <a href="#">c181e No0077 0716+714 Bu LR.pdf</a>,  <a href="#">c181e No0077 0716+714 Bu RL.pdf</a>, <a href="#">c181e No0077 0716+714 Bu RR.pdf</a></p> <p>Same for all antennas below unless otherwise noted.</p>	
On	X	yes	<p><a href="#">c181e FRINGE RfAnt On LLRR AllSrc.pdf</a></p> <p><a href="#">c181e No0041 3C454.3 BX LL.pdf</a>, <a href="#">c181e No0041 3C454.3 BX LR.pdf</a>,  <a href="#">c181e No0041 3C454.3 BX RL.pdf</a>, <a href="#">c181e No0041 3C454.3 BX RR.pdf</a></p> <p><a href="#">c181e No0049 3C454.3 bX LL.pdf</a>, <a href="#">c181e No0049 3C454.3 bX RR.pdf</a>,  no LR or RL fringes</p> <p><a href="#">c181e No0055 3C454.3 XP LL.pdf</a>, <a href="#">c181e No0055 3C454.3 XP LR.pdf</a>,  <a href="#">c181e No0055 3C454.3 XP RL.pdf</a>, <a href="#">c181e No0055 3C454.3 XP RR.pdf</a></p> <p><a href="#">c181e No0077 0716+714 tX LL.pdf</a>, <a href="#">c181e No0077 0716+714 tX LR.pdf</a>,  <a href="#">c181e No0077 0716+714 tX RL.pdf</a>, <a href="#">c181e No0077 0716+714 tX RR.pdf</a></p> <p><a href="#">c181e No0077 0716+714 uX LL.pdf</a>, <a href="#">c181e No0077 0716+714 uX LR.pdf</a>,  <a href="#">c181e No0077 0716+714 uX RL.pdf</a>, <a href="#">c181e No0077 0716+714 uX RR.pdf</a></p>	
Ys	Y	yes	<p><a href="#">c181e FRINGE RfAnt Ys LLRR AllSrc.pdf</a></p> <p><a href="#">c181e No0041 3C454.3 BY LL.pdf</a>, <a href="#">c181e No0041 3C454.3 BY LR.pdf</a>,  no RL or RR fringes</p> <p><a href="#">c181e No0055 3C454.3 PY LL.pdf</a>, <a href="#">c181e No0055 3C454.3 PY LR.pdf</a>,  <a href="#">c181e No0055 3C454.3 PY RL.pdf</a>, <a href="#">c181e No0055 3C454.3 PY RR.pdf</a></p>	As usual, Ys observed LCP only, but it was also recorded as fake RCP, that's why there are common Ys "right" to other antenna's left fringes.
Mh	Z	yes	<p><a href="#">c181e FRINGE RfAnt Mh LLRR AllSrc.pdf</a></p>	

Station	Code	Fringes	Plots	Comments
			<p><a href="#">c181e No0041 3C454.3 BZ LL.pdf</a>, <a href="#">c181e No0041 3C454.3 BZ LR.pdf</a>,  <a href="#">c181e No0041 3C454.3 BZ RL.pdf</a>, <a href="#">c181e No0041 3C454.3 BZ RR.pdf</a></p> <p><a href="#">c181e No0055 3C454.3 ZP LL.pdf</a>, <a href="#">c181e No0055 3C454.3 ZP LR.pdf</a>,  <a href="#">c181e No0055 3C454.3 ZP RL.pdf</a>, <a href="#">c181e No0055 3C454.3 ZP RR.pdf</a></p>	
Pv	P	<b>yes</b>	<p><a href="#">c181e FRINGE RfAnt Pv LLRR AllSrc.pdf</a></p> <p><a href="#">c181e No0055 3C454.3 BP LL.pdf</a>, <a href="#">c181e No0055 3C454.3 BP LR.pdf</a>,  <a href="#">c181e No0055 3C454.3 BP RL.pdf</a>, <a href="#">c181e No0055 3C454.3 BP RR.pdf</a></p> <p><a href="#">c181e No0055 3C454.3 fp LL.pdf</a>, <a href="#">c181e No0055 3C454.3 fp LR.pdf</a>,  <a href="#">c181e No0055 3C454.3 fp RL.pdf</a>, <a href="#">c181e No0055 3C454.3 fp RR.pdf</a></p> <p><a href="#">c181e No0055 3C454.3 kP LL.pdf</a>, <a href="#">c181e No0055 3C454.3 kP RR.pdf</a>,  no LR or RL fringes</p> <p><a href="#">c181e No0055 3C454.3 lP LL.pdf</a>, no LR fringe,  <a href="#">c181e No0055 3C454.3 lP RL.pdf</a>, <a href="#">c181e No0055 3C454.3 lP RR.pdf</a></p> <p><a href="#">c181e No0055 3C454.3 nP LL.pdf</a>, <a href="#">c181e No0055 3C454.3 nP RR.pdf</a>,  no LR or RL fringes</p> <p><a href="#">c181e No0055 3C454.3 oP LL.pdf</a>, <a href="#">c181e No0055 3C454.3 oP LR.pdf</a>,  <a href="#">c181e No0055 3C454.3 oP RR.pdf</a>, <a href="#">c181e No0055 3C454.3 pP LL.pdf</a></p> <p><a href="#">c181e No0055 3C454.3 pP LR.pdf</a>, no LR fringe,  <a href="#">c181e No0055 3C454.3 pP RL.pdf</a>, <a href="#">c181e No0055 3C454.3 pP RR.pdf</a></p> <p><a href="#">c181e No0055 3C454.3 PY LL.pdf</a>, <a href="#">c181e No0055 3C454.3 PY LR.pdf</a>,  <a href="#">c181e No0055 3C454.3 PY RL.pdf</a>, <a href="#">c181e No0055 3C454.3 PY RR.pdf</a></p> <p><a href="#">c181e No0055 3C454.3 XP LL.pdf</a>, <a href="#">c181e No0055 3C454.3 XP LR.pdf</a>,  <a href="#">c181e No0055 3C454.3 XP RL.pdf</a>, <a href="#">c181e No0055 3C454.3 XP RR.pdf</a></p> <p><a href="#">c181e No0055 3C454.3 ZP LL.pdf</a>, <a href="#">c181e No0055 3C454.3 ZP LR.pdf</a>,  <a href="#">c181e No0055 3C454.3 ZP RL.pdf</a>, <a href="#">c181e No0055 3C454.3 ZP RR.pdf</a></p> <p><a href="#">c181e No0077 0716+714 tP LL.pdf</a>, <a href="#">c181e No0077 0716+714 tP LR.pdf</a>,  <a href="#">c181e No0077 0716+714 tP RL.pdf</a>, <a href="#">c181e No0077 0716+714 tP RR.pdf</a></p> <p><a href="#">c181e No0077 0716+714 uP LL.pdf</a>, <a href="#">c181e No0077 0716+714 uP LR.pdf</a>,  <a href="#">c181e No0077 0716+714 uP RL.pdf</a>, <a href="#">c181e No0077 0716+714 uP RR.pdf</a></p>	
VLBA: Br	b	<b>yes</b>	<p><a href="#">c181e FRINGE RfAnt Br LLRR AllSrc.pdf</a></p> <p><a href="#">c181e No0049 3C454.3 bB LL.pdf</a>, <a href="#">c181e No0049 3C454.3 bB RR.pdf</a>,  no LR or RL fringes</p>	

Station	Code	Fringes	Plots	Comments
			<p><a href="#">c181e No0049 3C454.3 bf LL.pdf</a>, <a href="#">c181e No0049 3C454.3 bf RR.pdf</a>, no LR or RL fringes</p> <p><a href="#">c181e No0049 3C454.3 bk LL.pdf</a>, <a href="#">c181e No0049 3C454.3 bk RR.pdf</a>, no LR or RL fringes</p> <p><a href="#">c181e No0049 3C454.3 bl LL.pdf</a>, <a href="#">c181e No0049 3C454.3 bl RR.pdf</a>, no LR or RL fringes</p> <p><a href="#">c181e No0049 3C454.3 bn LL.pdf</a>, <a href="#">c181e No0049 3C454.3 bn RR.pdf</a>, no LR or RL fringes</p> <p><a href="#">c181e No0049 3C454.3 bo LL.pdf</a>, <a href="#">c181e No0049 3C454.3 bo RR.pdf</a>, no LR or RL fringes</p> <p><a href="#">c181e No0049 3C454.3 bp LL.pdf</a>, <a href="#">c181e No0049 3C454.3 bp RR.pdf</a>, no LR or RL fringes</p> <p><a href="#">c181e No0049 3C454.3 bX LL.pdf</a>, <a href="#">c181e No0049 3C454.3 bX RR.pdf</a>, no LR or RL fringes</p>	
VLBA: Fd	f	yes	<p><a href="#">c181e FRINGE RfAnt Fd LLRR AllSrc.pdf</a></p> <p><a href="#">c181e No0041 3C454.3 Bf LL.pdf</a>, <a href="#">c181e No0041 3C454.3 Bf RR.pdf</a>, no LR or RL fringes</p> <p><a href="#">c181e No0049 3C454.3 bf LL.pdf</a>, <a href="#">c181e No0049 3C454.3 bf RR.pdf</a>, no LR or RL fringes</p> <p><a href="#">c181e No0055 3C454.3 fp LL.pdf</a>, <a href="#">c181e No0055 3C454.3 fp LR.pdf</a>, <a href="#">c181e No0055 3C454.3 fp RL.pdf</a>, <a href="#">c181e No0055 3C454.3 fp RR.pdf</a></p>	
VLBA: Kp	k	yes	<p><a href="#">c181e FRINGE RfAnt Kp LLRR AllSrc.pdf</a></p> <p><a href="#">c181e No0041 3C454.3 Bk LL.pdf</a>, <a href="#">c181e No0041 3C454.3 Bk RR.pdf</a>, no LR or RL fringes</p> <p><a href="#">c181e No0049 3C454.3 bk LL.pdf</a>, <a href="#">c181e No0049 3C454.3 bk RR.pdf</a>, no LR or RL fringes</p> <p><a href="#">c181e No0055 3C454.3 kP LL.pdf</a>, <a href="#">c181e No0055 3C454.3 kP RR.pdf</a>, no LR or RL fringes</p>	
VLBA: La	l	yes	<p><a href="#">c181e FRINGE RfAnt La LLRR AllSrc.pdf</a></p> <p><a href="#">c181e No0041 3C454.3 Bl LL.pdf</a>, <a href="#">c181e No0041 3C454.3 Bl LR.pdf</a>, no fringe in RL, <a href="#">c181e No0041 3C454.3 Bl RR.pdf</a></p>	

Station	Code	Fringes	Plots	Comments
			<a href="#">c181e No0049 3C454.3 bl LL.pdf</a> , <a href="#">c181e No0049 3C454.3 bl RR.pdf</a> , no LR or RL fringes  <a href="#">c181e No0055 3C454.3 lp LL.pdf</a> , no LR fringe, <a href="#">c181e No0055 3C454.3 lp RL.pdf</a> , <a href="#">c181e No0055 3C454.3 lp RR.pdf</a>	
VLBA: Mk	m	yes	<a href="#">c181e FRINGE RfAnt Mk LLRR AllSrc.pdf</a>  <a href="#">c181e No0079 CTA102 mp LL.pdf</a> , <a href="#">c181e No0079 CTA102 mp LR.pdf</a> , <a href="#">c181e No0079 CTA102 mp RL.pdf</a> , <a href="#">c181e No0079 CTA102 mp RR.pdf</a>	
VLBA: Nl	n	yes	<a href="#">c181e FRINGE RfAnt Nl LLRR AllSrc.pdf</a>  <a href="#">c181e No0041 3C454.3 Bn LL.pdf</a> , <a href="#">c181e No0041 3C454.3 Bn RR.pdf</a> , no LR or RL fringes  <a href="#">c181e No0049 3C454.3 bn LL.pdf</a> , <a href="#">c181e No0049 3C454.3 bn RR.pdf</a> , no LR or RL fringes  <a href="#">c181e No0055 3C454.3 nP LL.pdf</a> , <a href="#">c181e No0055 3C454.3 nP RR.pdf</a> , no LR or RL fringes	
VLBA: Ov	o	yes	<a href="#">c181e FRINGE RfAnt Ov LLRR AllSrc.pdf</a>  <a href="#">c181e No0041 3C454.3 Bo LL.pdf</a> , <a href="#">c181e No0041 3C454.3 Bo RR.pdf</a> , no LR or RL fringes  <a href="#">c181e No0049 3C454.3 bo LL.pdf</a> , <a href="#">c181e No0049 3C454.3 bo RR.pdf</a> , no LR or RL fringes  <a href="#">c181e No0055 3C454.3 oP LL.pdf</a> , <a href="#">c181e No0055 3C454.3 oP LR.pdf</a> , <a href="#">c181e No0055 3C454.3 oP RR.pdf</a> , <a href="#">c181e No0055 3C454.3 pP LL.pdf</a>	
VLBA: Pt	p	yes	<a href="#">c181e FRINGE RfAnt Pt LLRR AllSrc.pdf</a>  <a href="#">c181e No0041 3C454.3 Bp LL.pdf</a> , <a href="#">c181e No0041 3C454.3 Bp RR.pdf</a> , no LR or RL fringes  <a href="#">c181e No0049 3C454.3 bp LL.pdf</a> , <a href="#">c181e No0049 3C454.3 bp RR.pdf</a> , no LR or RL fringes  <a href="#">c181e No0055 3C454.3 pP LR.pdf</a> , no LR fringe, <a href="#">c181e No0055 3C454.3 pP RL.pdf</a> , <a href="#">c181e No0055 3C454.3 pP RR.pdf</a>  <a href="#">c181e No0079 CTA102 mp LL.pdf</a> , <a href="#">c181e No0079 CTA102 mp LR.pdf</a> , <a href="#">c181e No0079 CTA102 mp RL.pdf</a> , <a href="#">c181e No0079 CTA102 mp RR.pdf</a>	

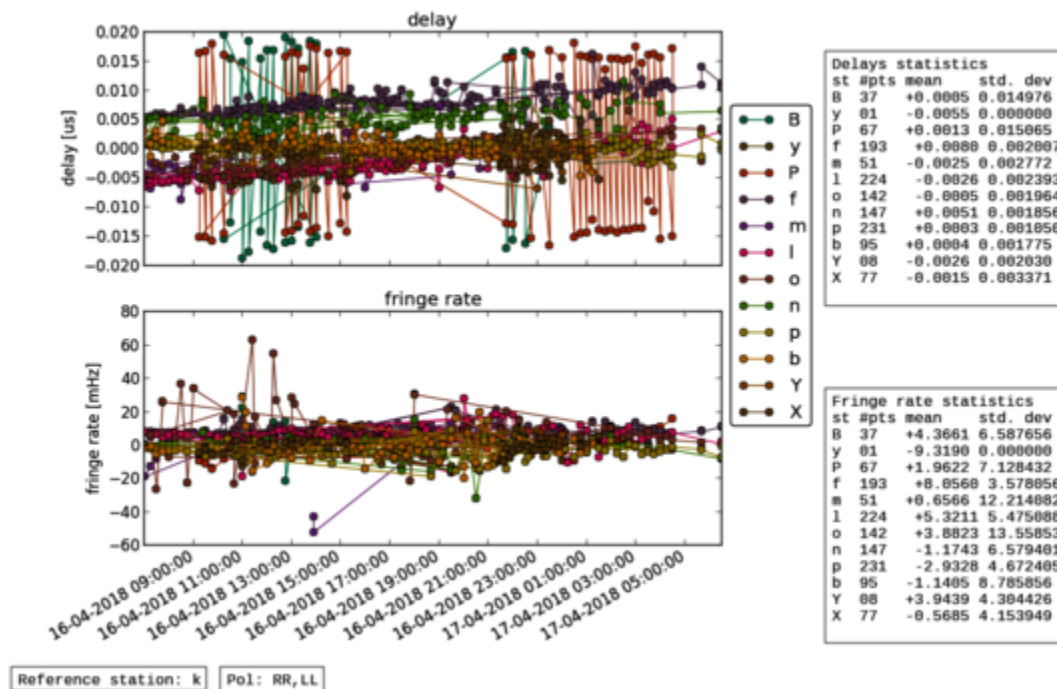
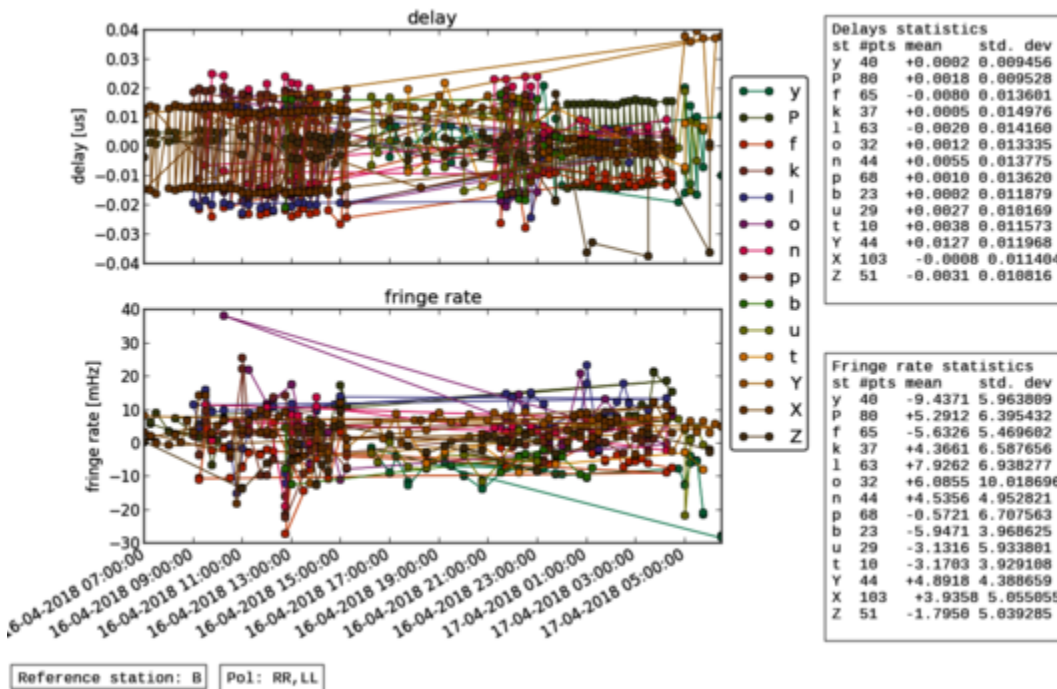
Station	Code	Fringes	Plots	Comments
GLT: Gl	g	no	-----	did not observe
KVN: Kt	t	yes	<a href="#">c181e FRINGE RfAnt Kt LLRR AllSrc.pdf</a>  <a href="#">c181e No0077 0716+714 Bt LR.pdf</a> , <a href="#">c181e No0077 0716+714 Bt RL.pdf</a> , no LL or RR fringeS  <a href="#">c181e No0077 0716+714 tX LL.pdf</a> , <a href="#">c181e No0077 0716+714 tX LR.pdf</a> , <a href="#">c181e No0077 0716+714 tX RL.pdf</a> , <a href="#">c181e No0077 0716+714 tX RR.pdf</a>  <a href="#">c181e No0077 0716+714 tP LL.pdf</a> , <a href="#">c181e No0077 0716+714 tP LR.pdf</a> , <a href="#">c181e No0077 0716+714 tP RL.pdf</a> , <a href="#">c181e No0077 0716+714 tP RR.pdf</a>  <a href="#">c181e No0077 0716+714 tu LL.pdf</a> , <a href="#">c181e No0077 0716+714 tu LR.pdf</a> , <a href="#">c181e No0077 0716+714 tu RL.pdf</a> , <a href="#">c181e No0077 0716+714 tu RR.pdf</a>  <a href="#">c181e No0077 0716+714 ty LL.pdf</a> , <a href="#">c181e No0077 0716+714 ty LR.pdf</a> , <a href="#">c181e No0077 0716+714 ty RL.pdf</a> , <a href="#">c181e No0077 0716+714 ty RR.pdf</a>	
KVN: Ku	u	yes	<a href="#">c181e FRINGE RfAnt Ku LLRR AllSrc.pdf</a>  <a href="#">c181e No0077 0716+714 Bu LL.pdf</a> , <a href="#">c181e No0077 0716+714 Bu LR.pdf</a> , <a href="#">c181e No0077 0716+714 Bu RL.pdf</a> , <a href="#">c181e No0077 0716+714 Bu RR.pdf</a>  <a href="#">c181e No0077 0716+714 uP LL.pdf</a> , <a href="#">c181e No0077 0716+714 uP LR.pdf</a> , <a href="#">c181e No0077 0716+714 uP RL.pdf</a> , <a href="#">c181e No0077 0716+714 uP RR.pdf</a>  <a href="#">c181e No0077 0716+714 uX LL.pdf</a> , <a href="#">c181e No0077 0716+714 uX LR.pdf</a> , <a href="#">c181e No0077 0716+714 uX RL.pdf</a> , <a href="#">c181e No0077 0716+714 uX RR.pdf</a>  <a href="#">c181e No0077 0716+714 tu LL.pdf</a> , <a href="#">c181e No0077 0716+714 tu LR.pdf</a> , <a href="#">c181e No0077 0716+714 tu RL.pdf</a> , <a href="#">c181e No0077 0716+714 tu RR.pdf</a>  <a href="#">c181e No0077 0716+714 uy LL.pdf</a> , <a href="#">c181e No0077 0716+714 uy LR.pdf</a> , <a href="#">c181e No0077 0716+714 uy RL.pdf</a> , <a href="#">c181e No0077 0716+714 uy RR.pdf</a>	
KVN: Ky	y	yes	<a href="#">c181e FRINGE RfAnt Ky LLRR AllSrc.pdf</a>  <a href="#">c181e No0077 0716+714 ty LL.pdf</a> , <a href="#">c181e No0077 0716+714 ty LR.pdf</a> , <a href="#">c181e No0077 0716+714 ty RL.pdf</a> , <a href="#">c181e No0077 0716+714 ty RR.pdf</a>  <a href="#">c181e No0077 0716+714 uy LL.pdf</a> , <a href="#">c181e No0077 0716+714 uy LR.pdf</a> , <a href="#">c181e No0077 0716+714 uy RL.pdf</a> , <a href="#">c181e No0077 0716+714 uy RR.pdf</a>	

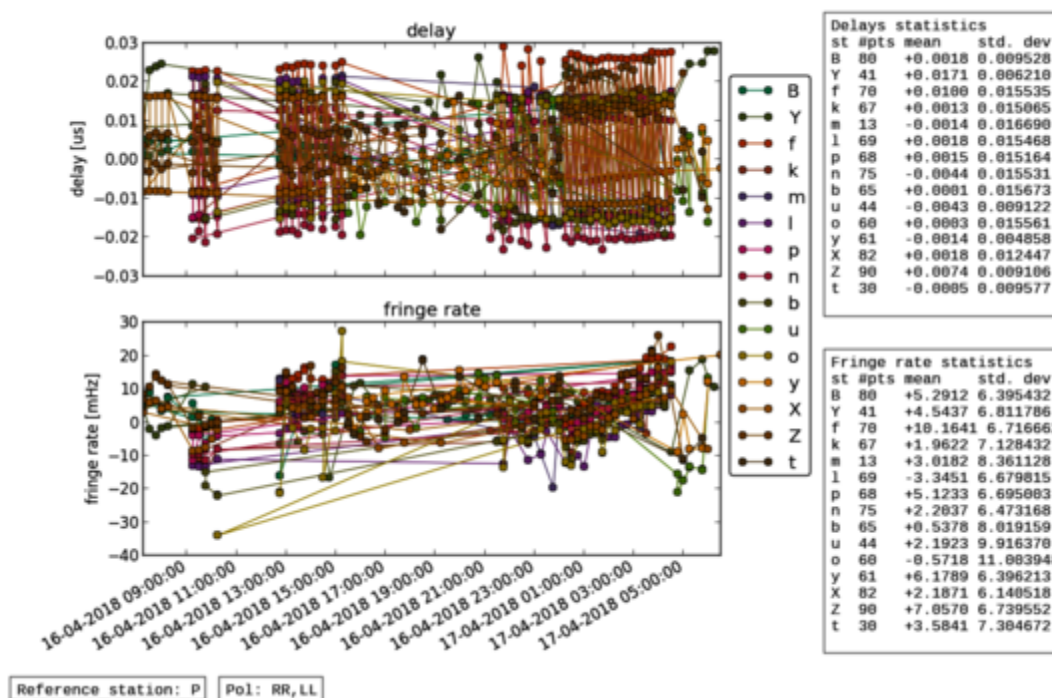
## Notes

For technical reasons the correlation output is saved as 3 different fits files, see their content below in the plist section.

## Post-Correlation checks

### Residuals





### FITS completeness (plist)

#### legend:

- o -- station scheduled and fully accounted for in the fits file
- 42 (or another number) -- station scheduled, but data found only for 42% of the scheduled interval
- x -- station scheduled, but corresponding entry not found in the fits file
- . -- station not scheduled

### mm013d\_setup1.fits:

				EF	ON	YS	PV	MH	NL	FD	PT	LA	OV	KP	BR	MK	KY	KU	KT
c181e_001	No0001	BLLAC	3mm_RDBE	o	o	o	x	o	.	.	.	.	.	.	.	.	.	.	.
c181e_002	No0002	1510-089	3mm_RDBE	.	.	.	.	.	o	o	53	o	o	o	o	o	.	.	.
c181e_003	No0003	BLLAC	3mm_RDBE	o	o	o	o	o	.	.	.	.	.	.	.	.	.	.	.
c181e_004	No0004	1510-089	3mm_RDBE	.	.	.	.	.	o	o	o	o	o	o	o	o	.	.	.
c181e_005	No0005	BLLAC	3mm_RDBE	o	o	o	o	o	.	.	.	.	.	.	.	.	.	.	.
c181e_006	No0006	1510-089	3mm_RDBE	.	.	.	.	.	o	o	o	o	o	o	o	o	.	.	.
c181e_007	No0007	BLLAC	3mm_RDBE	o	o	o	42	o	.	.	.	.	.	.	.	.	.	.	.
c181e_008	No0008	1510-089	3mm_RDBE	.	.	.	.	.	o	o	o	o	o	o	o	o	.	.	.
c181e_009	No0009	BLLAC	3mm_RDBE	o	o	o	o	o	.	.	.	.	.	.	.	.	.	.	.
c181e_010	No0010	1510-089	3mm_RDBE	.	.	.	.	.	o	o	o	o	o	o	o	o	.	.	.
c181e_011	No0011	BLLAC	3mm_RDBE	o	o	o	o	o	.	.	.	.	.	.	.	.	.	.	.
c181e_012	No0012	1510-089	3mm_RDBE	.	.	.	.	.	o	o	o	o	o	o	o	o	.	.	.
c181e_013	No0013	BLLAC	3mm_RDBE	o	o	o	.	o	o	.	.	.	.	.	.	.	.	.	.
c181e_014	No0014	1510-089	3mm_RDBE	.	.	.	.	.	o	o	o	o	o	o	o	o	.	.	.
c181e_015	No0015	BLLAC	3mm_RDBE	o	o	o	.	o	o	.	.	.	.	.	.	.	.	.	.
c181e_016	No0016	1510-089	3mm_RDBE	.	.	.	.	.	o	o	o	o	o	o	o	o	.	.	.







c181e_039	No0039	BLLAC	3mm_RDBE	o	o	o	x	o	o	o	o	o	o	o	.	.	.	.
c181e_041	No0041	3C454.3	3mm_RDBE	o	o	o	x	o	o	o	o	o	o	o	.	.	.	.
c181e_043	No0043	BLLAC	3mm_RDBE	o	o	o	x	o	o	o	o	o	o	o	.	.	.	.
c181e_045	No0045	BLLAC	3mm_RDBE	o	o	o	04	o	.	.	.	.	.	.	.	.	.	.
c181e_047	No0047	BLLAC	3mm_RDBE	o	o	o	o	o	o	o	o	o	o	o	o	.	.	.
c181e_049	No0049	3C454.3	3mm_RDBE	o	o	o	o	o	o	o	o	o	o	o	.	.	.	.
c181e_051	No0051	BLLAC	3mm_RDBE	o	o	o	o	o	o	o	o	o	o	o	o	.	.	.
c181e_053	No0053	BLLAC	3mm_RDBE	o	o	o	o	o	o	o	o	o	o	o	o	.	.	.
c181e_055	No0055	3C454.3	3mm_RDBE	o	o	o	o	o	o	o	o	o	o	o	.	.	.	.
c181e_057	No0057	BLLAC	3mm_RDBE	o	o	o	o	o	o	o	o	o	o	o	o	.	.	.
c181e_059	No0059	BLLAC	3mm_RDBE	o	o	o	o	o	.	.	.	.	.	.	.	.	.	.
c181e_061	No0061	BLLAC	3mm_RDBE	o	o	o	o	o	o	o	o	o	o	o	o	.	.	.
c181e_063	No0063	BLLAC	3mm_RDBE	o	.	o	o	o	.	.	.	.	.	.	.	.	.	.
c181e_065	No0065	BLLAC	3mm_RDBE	o	o	o	o	o	o	o	o	o	o	o	o	.	.	.
c181e_067	No0067	BLLAC	3mm_RDBE	o	o	o	o	o	o	o	o	o	o	o	o	.	.	.
c181e_070	No0070	0716+714	3mm_RDBE	o	o	o	o	o	.	.	.	.	.	.	.	o	o	o
c181e_072	No0072	0836+710	3mm_RDBE	o	o	o	o	o	.	.	.	.	.	.	.	o	o	o
c181e_075	No0075	0954+658	3mm_RDBE	o	o	o	o	o	.	.	.	.	.	.	.	o	o	o
c181e_077	No0077	0716+714	3mm_RDBE	o	o	o	o	o	.	.	.	.	.	.	.	o	o	o
c181e_080	No0080	0836+710	3mm_RDBE	o	o	o	o	o	.	.	.	.	.	.	.	o	o	o
c181e_082	No0082	0954+658	3mm_RDBE	o	o	o	o	o	.	.	.	.	.	.	.	o	o	o
c181e_085	No0085	0716+714	3mm_RDBE	o	o	o	o	o	.	.	.	.	.	.	.	o	o	x
c181e_087	No0087	0836+710	3mm_RDBE	o	o	o	o	o	.	.	.	.	.	.	.	o	o	x
c181e_090	No0090	0954+658	3mm_RDBE	o	o	o	o	28	.	.	.	.	.	.	.	o	o	o
c181e_092	No0092	0716+714	3mm_RDBE	o	o	o	o	o	.	.	.	.	.	.	.	o	o	o
c181e_095	No0095	0836+710	3mm_RDBE	o	o	o	o	o	.	.	.	.	.	.	.	o	o	o
c181e_097	No0097	0954+658	3mm_RDBE	o	o	o	o	o	.	.	.	.	.	.	.	o	o	o
c181e_100	No0100	0716+714	3mm_RDBE	o	o	o	o	o	.	.	.	.	.	.	.	o	o	o
c181e_102	No0102	0836+710	3mm_RDBE	o	o	o	o	o	.	.	.	.	.	.	.	o	o	o
c181e_105	No0105	0954+658	3mm_RDBE	o	o	o	o	o	.	.	.	.	.	.	.	o	o	o
c181e_107	No0107	0716+714	3mm_RDBE	o	o	o	o	o	.	.	.	.	.	.	.	o	o	o
c181e_110	No0110	0836+710	3mm_RDBE	o	o	o	o	o	.	.	.	.	.	.	.	o	o	o
c181e_112	No0112	0954+658	3mm_RDBE	o	o	o	o	o	.	.	.	.	.	.	.	o	o	o
c181e_115	No0115	0716+714	3mm_RDBE	o	o	o	o	o	.	.	.	.	.	.	.	o	o	o
c181e_117	No0117	0836+710	3mm_RDBE	o	o	o	o	o	.	.	.	.	.	.	.	o	o	x
c181e_120	No0120	0954+658	3mm_RDBE	o	o	o	o	o	.	.	.	.	.	.	.	o	o	o
c181e_122	No0122	0716+714	3mm_RDBE	o	o	o	o	o	.	.	.	.	.	.	.	o	o	o
c181e_125	No0125	0836+710	3mm_RDBE	o	o	o	o	o	.	.	.	.	.	.	.	o	o	o
c181e_127	No0127	0954+658	3mm_RDBE	o	o	o	o	o	.	.	.	.	.	.	.	o	o	o
c181e_129	No0129	0716+714	3mm_RDBE	o	o	o	o	o	o	o	o	o	o	o	o	o	o	x
c181e_131	No0131	0836+710	3mm_RDBE	o	o	o	o	o	o	o	o	o	o	o	o	o	o	x
c181e_133	No0133	0954+658	3mm_RDBE	o	o	o	o	o	o	o	o	o	o	o	.	o	o	o
c181e_135	No0135	0716+714	3mm_RDBE	o	o	o	o	o	o	o	o	o	o	o	o	o	o	o
c181e_137	No0137	0836+710	3mm_RDBE	o	o	o	o	o	o	o	o	o	o	o	o	o	o	o
c181e_139	No0139	0954+658	3mm_RDBE	o	o	o	o	o	o	o	o	o	o	o	.	o	o	o
c181e_141	No0141	0716+714	3mm_RDBE	o	o	o	o	o	o	o	o	o	o	o	o	o	o	o

**mm013d\_setup3.fits:**

				EF	ON	YS	PV	MH	NL	FD	PT	LA	OV	KP	BR	MK	KY	KU	KT
c181e_143	No0143	0836+710	3mm_RDBE	o	o	o	o	o	o	o	o	o	o	o	o	o	o	o	o
c181e_145	No0145	0954+658	3mm_RDBE	o	o	o	o	o	o	o	o	o	o	o	o	o	o	o	o
c181e_147	No0147	0716+714	3mm_RDBE	o	o	o	o	o	o	o	o	o	o	o	o	o	o	o	o
c181e_149	No0149	0716+714	3mm_RDBE	o	o	o	o	o	o	o	o	o	o	o	o	o	o	o	o
c181e_151	No0151	1156+295	3mm_RDBE	o	o	o	o	o	o	o	o	o	o	o	.	.	.	.	.
c181e_152	No0152	1156+295	3mm_RDBE	o	o	o	o	o	o	o	o	o	o	o	.	.	.	.	.
c181e_153	No0153	1156+295	3mm_RDBE	o	o	o	o	o	o	o	o	o	o	o	.	.	.	.	.
c181e_154	No0154	1156+295	3mm_RDBE	o	o	o	o	o	o	o	o	o	o	o	.	.	.	.	.
c181e_155	No0155	1156+295	3mm_RDBE	o	o	o	o	o	o	o	o	o	o	o	.	.	.	.	.
c181e_156	No0156	1156+295	3mm_RDBE	o	o	o	o	o	o	o	o	o	o	o	.	.	.	.	.
c181e_157	No0157	1156+295	3mm_RDBE	o	o	o	o	o	o	o	o	o	o	o	.	.	.	.	.
c181e_158	No0158	1156+295	3mm_RDBE	o	o	o	o	o	o	o	o	o	o	o	.	.	.	.	.
c181e_159	No0159	1156+295	3mm_RDBE	o	o	o	o	o	o	o	o	o	o	o	.	.	.	.	.
c181e_160	No0160	1156+295	3mm_RDBE	o	o	o	o	o	o	o	o	o	o	o	.	.	.	.	.
c181e_161	No0161	1156+295	3mm_RDBE	o	o	o	o	o	o	o	o	o	o	o	.	.	.	.	.
c181e_162	No0162	1156+295	3mm_RDBE	o	o	o	o	o	o	o	o	o	o	o	.	.	.	.	.
c181e_163	No0163	1156+295	3mm_RDBE	o	o	o	o	o	o	o	o	o	o	o	.	.	.	.	.
c181e_164	No0164	1156+295	3mm_RDBE	o	o	o	o	o	o	o	o	o	o	o	.	.	.	.	.
c181e_165	No0165	1156+295	3mm_RDBE	o	o	o	o	o	o	o	o	o	o	o	.	.	.	.	.
c181e_166	No0166	1156+295	3mm_RDBE	o	o	o	o	o	o	o	o	o	o	o	.	.	.	.	.
c181e_167	No0167	1156+295	3mm_RDBE	o	o	o	o	o	o	o	o	o	o	o	.	.	.	.	.
c181e_168	No0168	1156+295	3mm_RDBE	o	o	o	o	o	o	o	o	o	o	o	.	.	.	.	.
c181e_170	No0170	3C454.3	3mm_RDBE	o	o	o	o	o	.	.	.	.	.	.	.	.	o	o	x
c181e_172	No0172	3C454.3	3mm_RDBE	o	o	o	o	o	.	.	.	.	.	.	.	.	o	o	o
c181e_174	No0174	3C454.3	3mm_RDBE	o	o	o	o	o	.	.	.	.	.	.	.	.	o	o	x
c181e_177	No0177	3C454.3	3mm_RDBE	o	o	o	o	o	.	.	.	.	.	.	.	.	o	o	x
c181e_179	No0179	3C454.3	3mm_RDBE	o	o	o	o	o	.	.	.	.	.	.	.	.	o	o	o
c181e_182	No0182	3C454.3	3mm_RDBE	09	o	o	o	o	.	.	.	.	.	.	.	.	o	o	o
c181e_184	No0184	3C454.3	3mm_RDBE	o	o	o	o	o	.	.	.	.	.	.	.	.	o	o	o
c181e_187	No0187	3C454.3	3mm_RDBE	o	o	o	o	o	.	.	.	.	.	.	.	.	o	o	o