

# C172B Correlation Report

## General information

- Session info: <http://www3.mpifr-bonn.mpg.de/div/vlbi/globalmm/>
- Station feedback: [http://www3.mpifr-bonn.mpg.de/div/vlbi/globalmm/sessions/sep17/feedback\\_sep17.asc](http://www3.mpifr-bonn.mpg.de/div/vlbi/globalmm/sessions/sep17/feedback_sep17.asc)
- C172B consists of only one subproject: MV001A.
- Initial correlation done with all stations, second correlation (fix Effelsberg incorrect channel order) done without Mh due to local cluster data loss and the station having deleted its own copy of the data. Final version is a combination of these two correlations, with non-Ef baselines taken from the initial correlation and Ef baselines -- from the later one with Mh missing. Thus there are no Ef-Mh baselines in the final correlation product.

## Fringes

Station	Code	Fringes	Plots	Comments
Ef	B	yes	<p>Fringe overview of all baselines including Ef in LL (left for each baseline) and RR (right for each baseline). Legend: white - scheduled, but no data, blue - no fringe, red-green - fringes of different quality.</p> <p><a href="#">c172b FRINGE RfAnt Ef LLRR AllSrc.pdf</a></p> <p>Examples of fourfit fringe plots:</p> <p>EfGb, all pols:</p> <p><a href="#">c172b No0004 3C279 BG LL.pdf</a>, <a href="#">c172b No0004 3C279 BG LR.pdf</a>,  <a href="#">c172b No0004 3C279 BG RL.pdf</a>, <a href="#">c172b No0004 3C279 BG RR.pdf</a></p> <p>EfOn, all pols:</p> <p><a href="#">c172b No0021 1502+106 BX LL.pdf</a>, <a href="#">c172b No0021 1502+106 BX LR.pdf</a>,  <a href="#">c172b No0021 1502+106 BX RL.pdf</a>, <a href="#">c172b No0021 1502+106 BX RR.pdf</a></p>	<p>see general info about the missing Ef-Mh baseline. Effelsberg recorded with DBBC (Ef) and RDBE (Eb), but only Ef was correlated.</p> <p>Weather: cloudy</p>
On	X	yes	<p>Fringe overview (see Ef for explanations):</p> <p><a href="#">c172b FRINGE RfAnt On LLRR AllSrc.pdf</a></p> <p>Examples of fourfit fringe plots:</p> <p>EfOn, all pols:</p> <p><a href="#">c172b No0021 1502+106 BX LL.pdf</a>, <a href="#">c172b No0021 1502+106 BX LR.pdf</a>,  <a href="#">c172b No0021 1502+106 BX RL.pdf</a>, <a href="#">c172b No0021 1502+106 BX RR.pdf</a></p> <p>GbOn, all except LR (no LR fringe):</p> <p><a href="#">c172b No0034 1502+106 GX LL.pdf</a>  <a href="#">c172b No0034 1502+106 GX RL.pdf</a>, <a href="#">c172b No0034 1502+106 GX RR.pdf</a></p>	<p>See station feedback for detailed comments.</p>
Ys	Y	yes	<p>Fringe overview (see Ef for explanations):</p>	<p>As usual, Ys observed LCP only, but it was also recorded as fake RCP, that's</p>

Station	Code	Fringes	Plots	Comments
			<p><a href="#">c172b FRINGE RfAnt Ys LLRR AllSrc.pdf</a></p> <p>Examples of fourfit fringe plots:</p> <p>PvYs, all pols:</p> <p><a href="#">c172b No0021 1502+106 PY LL.pdf</a>, <a href="#">c172b No0021 1502+106 PY LR.pdf</a>,  <a href="#">c172b No0021 1502+106 PY RL.pdf</a>, <a href="#">c172b No0021 1502+106 PY RR.pdf</a></p> <p>GbYs, LL and LR only:</p> <p><a href="#">c172b No0034 1502+106 GY LL.pdf</a>, <a href="#">c172b No0034 1502+106 GY LR.pdf</a></p>	<p>why there are common Ys "right" to other antenna's left fringes.</p>
Mh	Z	yes	<p>Fringe overview (see Ef for explanations):</p> <p><a href="#">c172b FRINGE RfAnt Mh LLRR AllSrc.pdf</a></p> <p>Examples of fourfit fringe plots:</p> <p>MhOn, all pols:</p> <p><a href="#">c172b No0012 1502+106 ZX LL.pdf</a>, <a href="#">c172b No0012 1502+106 ZX LR.pdf</a>,  <a href="#">c172b No0012 1502+106 ZX RL.pdf</a>, <a href="#">c172b No0012 1502+106 ZX RR.pdf</a></p> <p>MhPv, all pols:</p> <p><a href="#">c172b No0034 1502+106 ZP LL.pdf</a>, <a href="#">c172b No0034 1502+106 ZP LR.pdf</a>,  <a href="#">c172b No0034 1502+106 ZP RL.pdf</a>, <a href="#">c172b No0034 1502+106 ZP RR.pdf</a></p>	
Pv	P	yes	<p>Fringe overview (see Ef for explanations):</p> <p><a href="#">c172b FRINGE RfAnt Pv LLRR AllSrc.pdf</a></p> <p>Examples of fourfit fringe plots:</p> <p>MhPv, all pols:</p> <p><a href="#">c172b No0012 1502+106 ZP LL.pdf</a>, <a href="#">c172b No0012 1502+106 ZP LR.pdf</a>,  <a href="#">c172b No0012 1502+106 ZP RL.pdf</a>, <a href="#">c172b No0012 1502+106 ZP RR.pdf</a></p> <p>BrPv,    pols:</p> <p><a href="#">c172b No0034 1502+106 bP LL.pdf</a>, <a href="#">c172b No0034 1502+106 bP RR.pdf</a></p> <p>OvPv,    pols:</p> <p><a href="#">c172b No0034 1502+106 oP LL.pdf</a>, <a href="#">c172b No0034 1502+106 oP RR.pdf</a></p>	<p>Joined the schedule late.</p>
Gb	G	yes	<p>Fringe overview (see Ef for explanations):</p>	<p>See station feedback for detailed comments.</p>

Station	Code	Fringes	Plots	Comments
			<p><a href="#">c172b FRINGE RfAnt Gb LLRR AllSrc.pdf</a></p> <p>Examples of fourfit fringe plots:</p> <p>GbOn, all pols:</p> <p><a href="#">c172b No0004 3C279 GX LL.pdf</a>, <a href="#">c172b No0004 3C279 GX LR.pdf</a>,  <a href="#">c172b No0004 3C279 GX RL.pdf</a>, <a href="#">c172b No0004 3C279 GX RR.pdf</a></p> <p>GbLa, all pols:</p> <p><a href="#">c172b No0046 1502+106 Gl LL.pdf</a>, <a href="#">c172b No0046 1502+106 Gl LR.pdf</a>,  <a href="#">c172b No0046 1502+106 Gl RL.pdf</a>, <a href="#">c172b No0046 1502+106 Gl RR.pdf</a></p>	
Br	b	yes	<p>Fringe overview (see Ef for explanations):</p> <p><a href="#">c172b FRINGE RfAnt Br LLRR AllSrc.pdf</a></p> <p>Examples of fourfit fringe plots:</p> <p>BrLa,    pols:</p> <p><a href="#">c172b No0034 1502+106 bk LL.pdf</a>, <a href="#">c172b No0034 1502+106 bk RR.pdf</a></p> <p>BrKp,    pols:</p> <p><a href="#">c172b No0052 1502+106 bl LL.pdf</a>, <a href="#">c172b No0052 1502+106 bl RR.pdf</a></p>	
Fd	f	yes	<p>Fringe overview (see Ef for explanations):</p> <p><a href="#">c172b FRINGE RfAnt Fd LLRR AllSrc.pdf</a></p> <p>Examples of fourfit fringe plots:</p> <p>FdKp,    pols:</p> <p><a href="#">c172b No0007 OJ287 fk LL.pdf</a>, <a href="#">c172b No0007 OJ287 fk RR.pdf</a></p> <p>FdKp,    pols, different scan and source:</p> <p><a href="#">c172b No0034 1502+106 fk LL.pdf</a>, <a href="#">c172b No0034 1502+106 fk RR.pdf</a></p>	<p>Communications and power problems, but data for this experiment are mostly unaffected.</p>
Kp	k	yes	<p>Fringe overview (see Ef for explanations):</p> <p><a href="#">c172b FRINGE RfAnt Kp LLRR AllSrc.pdf</a></p> <p>Examples of fourfit fringe plots:</p> <p>GbKp,    pols:</p> <p><a href="#">c172b No0034 1502+106 Gk LL.pdf</a>, <a href="#">c172b No0034 1502+106 Gk RR.pdf</a></p>	

Station	Code	Fringes	Plots	Comments
			<p>KpOn,    pols:</p> <p><a href="#">c172b_No0034_1502+106_kX_LL.pdf</a>, <a href="#">c172b_No0034_1502+106_kX_RR.pdf</a></p>	
La	l	yes	<p>Fringe overview (see Ef for explanations):</p> <p><a href="#">c172b_FRINGE_RfAnt_La_LLRR_AllSrc.pdf</a></p> <p>Examples of fourfit fringe plots:</p> <p>FdLa,    pols:</p> <p><a href="#">c172b_No0007_OJ287_fl_LL.pdf</a>, <a href="#">c172b_No0007_OJ287_fl_RR.pdf</a></p> <p>GbLa, all pols:</p> <p><a href="#">c172b_No0052_1502+106_Gl_LL.pdf</a>, <a href="#">c172b_No0052_1502+106_Gl_LR.pdf</a>,  <a href="#">c172b_No0052_1502+106_Gl_RL.pdf</a>, <a href="#">c172b_No0052_1502+106_Gl_RR.pdf</a></p>	
Mk	m	yes	<p>Fringe overview (see Ef for explanations):</p> <p><a href="#">c172b_FRINGE_RfAnt_Mk_LLRR_AllSrc.pdf</a></p> <p>Examples of fourfit fringe plots:</p> <p>MkOv, all pols:</p> <p><a href="#">c172b_No0010_OJ287_mo_LL.pdf</a>, <a href="#">c172b_No0010_OJ287_mo_LR.pdf</a>,  <a href="#">c172b_No0010_OJ287_mo_RL.pdf</a>, <a href="#">c172b_No0010_OJ287_mo_RR.pdf</a></p> <p>GbMk, all pols:</p> <p><a href="#">c172b_No0046_1502+106_Gm_LL.pdf</a>, <a href="#">c172b_No0046_1502+106_Gm_LR.pdf</a>,  <a href="#">c172b_No0046_1502+106_Gm_RL.pdf</a>, <a href="#">c172b_No0046_1502+106_Gm_RR.pdf</a></p>	
Nl	n	yes	<p>Fringe overview (see Ef for explanations):</p> <p><a href="#">c172b_FRINGE_RfAnt_Nl_LLRR_AllSrc.pdf</a></p> <p>Examples of fourfit fringe plots:</p> <p>FdNl,    pols:</p> <p><a href="#">c172b_No0046_1502+106_fn_LL.pdf</a>, <a href="#">c172b_No0046_1502+106_fn_RR.pdf</a></p> <p>GbNl, all pols:</p> <p><a href="#">c172b_No0046_1502+106_Gn_LL.pdf</a>, <a href="#">c172b_No0046_1502+106_Gn_LR.pdf</a>,  <a href="#">c172b_No0046_1502+106_Gn_RL.pdf</a>, <a href="#">c172b_No0046_1502+106_Gn_RR.pdf</a></p>	

Station	Code	Fringes	Plots	Comments
Ov	o	yes	<p>Fringe overview (see Ef for explanations):</p> <p><a href="#">c172b FRINGE RfAnt_Ov_LLRR_AllSrc.pdf</a></p> <p>Examples of fourfit fringe plots:</p> <p>KpOv,    pols:</p> <p><a href="#">c172b No0034_1502+106_ko_LL.pdf</a>, <a href="#">c172b No0034_1502+106_ko_RR.pdf</a></p> <p>GbOv,    pols:</p> <p><a href="#">c172b No0052_1502+106_Go_LL.pdf</a>, <a href="#">c172b No0052_1502+106_Go_RR.pdf</a></p>	
Pt	p	yes	<p>Fringe overview (see Ef for explanations):</p> <p><a href="#">c172b FRINGE RfAnt_Pt_LLRR_AllSrc.pdf</a></p> <p>Examples of fourfit fringe plots:</p> <p>MkPt, all pols:</p> <p><a href="#">c172b No0010_OJ287_mp_LL.pdf</a>, <a href="#">c172b No0010_OJ287_mp_LR.pdf</a>,  <a href="#">c172b No0010_OJ287_mp_RL.pdf</a>, <a href="#">c172b No0010_OJ287_mp_RR.pdf</a></p> <p>KpPt,    pols:</p> <p><a href="#">c172b No0034_1502+106_kp_LL.pdf</a>, <a href="#">c172b No0034_1502+106_kp_RR.pdf</a></p>	

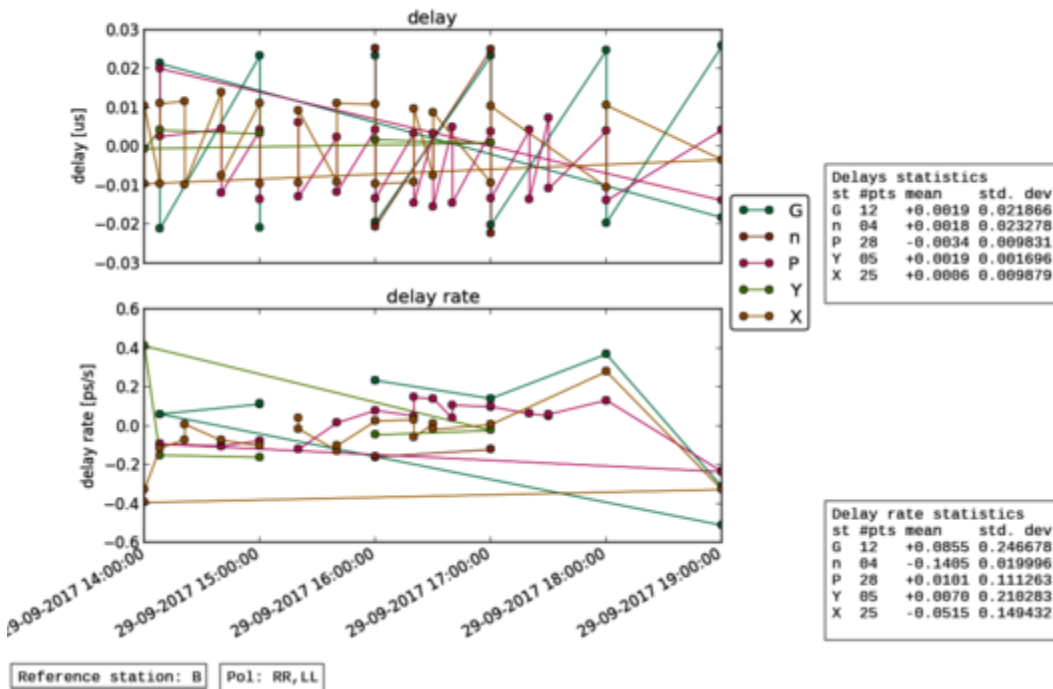
## Notes

- PV joined the schedule late (during the second 3C279 scan)

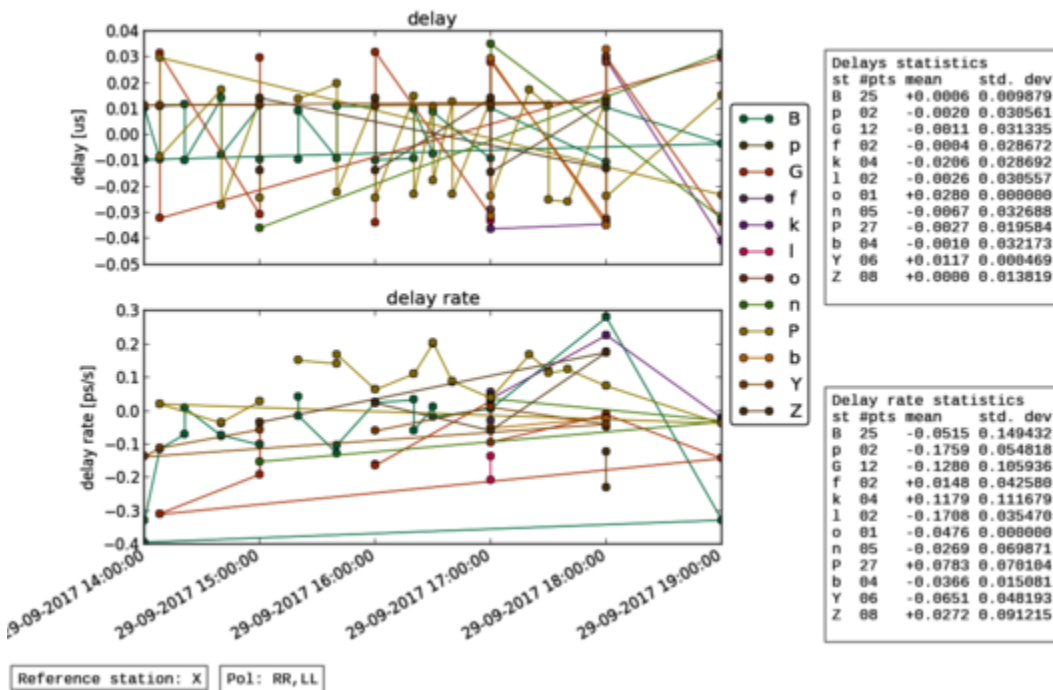
## Post-Correlation checks

## Residuals

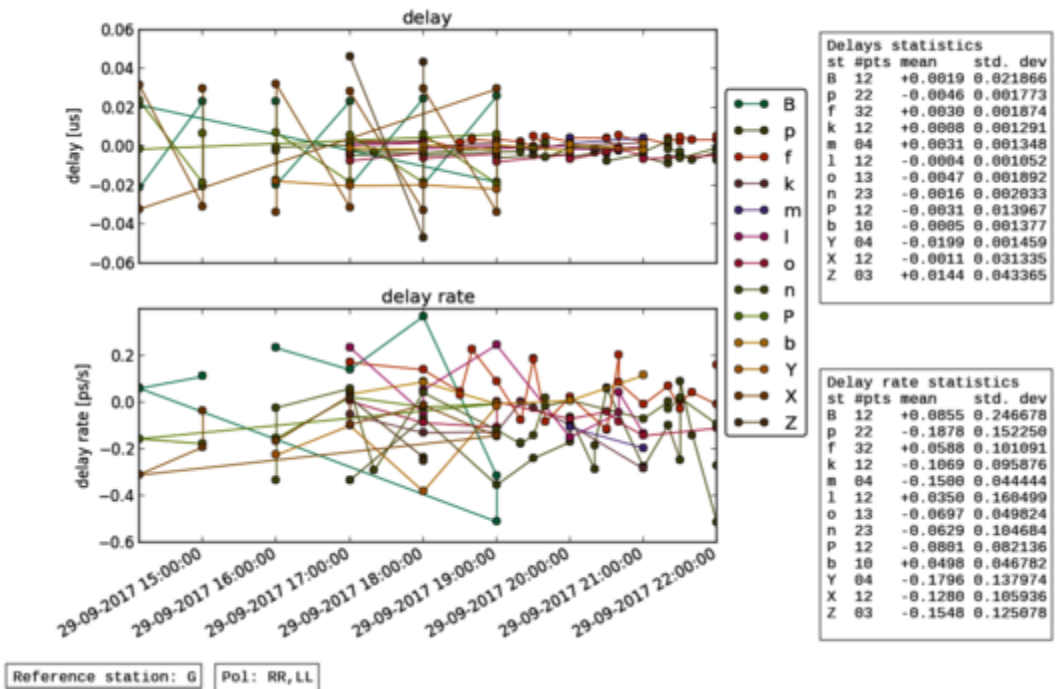
Reference B (Ef), LL and RR



Reference X (On), LL and RR



Reference G (Gb), LL and RR



FITS completeness (plist)

				EF	ON	YS	PV	GB	FD	OV	PT	BR	KP	MK	LA	NL	MH
c172b_01	No0001	3C279	3mm_RDBE	o	o	o	o	.	.	.	.	.	.	.	.	.	.
c172b_02	No0003	OJ287	3mm_RDBE	.	.	.	.	.	o	o	o	o	o	o	o	.	.
c172b_03	No0004	3C279	3mm_RDBE	o	o	o	o	o	.	.	.	.	.	.	.	.	.
c172b_04	No0006	1413+135	3mm_RDBE	o	o	o	o	o	.	.	.	.	.	.	.	o	o
c172b_05	No0007	OJ287	3mm_RDBE	.	.	.	.	.	o	o	o	o	o	o	o	.	.
c172b_06	No0009	1413+135	3mm_RDBE	o	o	o	o	o	.	.	.	.	.	.	.	o	o
c172b_07	No0010	OJ287	3mm_RDBE	.	.	.	.	.	o	o	o	o	o	o	o	.	.
c172b_08	No0012	1502+106	3mm_RDBE	o	o	o	o	o	.	.	.	.	.	.	.	o	o
c172b_09	No0013	OJ287	3mm_RDBE	.	.	.	.	.	o	o	o	o	o	o	o	.	.
c172b_10	No0015	1413+135	3mm_RDBE	o	o	o	o	o	o	.	o	.	.	.	o	o	o
c172b_11	No0016	OJ287	3mm_RDBE	.	.	.	.	.	.	o	.	o	o	o	.	.	.
c172b_12	No0018	1413+135	3mm_RDBE	o	o	o	o	o	o	.	o	.	.	.	o	o	o
c172b_13	No0019	OJ287	3mm_RDBE	.	.	.	.	.	.	o	.	o	o	o	.	.	.
c172b_14	No0021	1502+106	3mm_RDBE	o	o	o	o	o	o	.	.	.	.	.	.	o	o
c172b_15	No0022	OJ287	3mm_RDBE	.	.	.	.	.	o	o	o	o	o	o	o	.	.
c172b_16	No0024	1413+135	3mm_RDBE	o	o	o	o	o	o	o	o	o	o	.	o	o	o
c172b_17	No0025	1413+135	3mm_RDBE	o	o	o	o	o	o	o	o	o	o	.	o	o	o
c172b_18	No0026	1413+135	3mm_RDBE	o	o	o	o	o	o	o	o	o	o	.	o	o	o
c172b_19	No0028	1502+106	3mm_RDBE	o	o	o	o	o	o	o	o	o	o	.	o	o	o
c172b_20	No0030	1413+135	3mm_RDBE	o	o	o	o	o	o	o	o	o	o	.	o	o	o
c172b_21	No0031	1413+135	3mm_RDBE	o	o	o	o	o	o	o	o	o	o	.	o	o	o
c172b_22	No0032	1413+135	3mm_RDBE	o	o	o	o	o	o	o	o	o	o	.	o	o	o
c172b_23	No0034	1502+106	3mm_RDBE	o	o	o	o	o	o	o	o	o	o	.	o	o	o
c172b_24	No0036	1413+135	3mm_RDBE	o	o	o	o	o	o	o	o	o	o	.	o	o	.
c172b_25	No0037	1413+135	3mm_RDBE	o	o	o	o	o	o	o	o	o	o	o	o	o	.
c172b_26	No0038	1413+135	3mm_RDBE	o	o	o	o	o	o	o	o	o	o	o	o	o	.

c172b_27	No0040	1502+106	3mm_RDBE	o	o	o	o	o	o	o	o	o	o	o	.	o	o	.
c172b_28	No0042	1413+135	3mm_RDBE	.	.	o	o	o	o	o	o	o	o	o	o	o	o	.
c172b_29	No0043	1413+135	3mm_RDBE	.	.	.	.	o	o	o	o	o	o	o	o	o	o	.
c172b_30	No0044	1413+135	3mm_RDBE	.	.	.	.	o	o	o	o	o	o	o	o	o	o	.
c172b_31	No0046	1502+106	3mm_RDBE	.	.	.	.	o	o	o	o	o	o	o	o	o	o	.
c172b_32	No0048	1413+135	3mm_RDBE	.	.	.	.	o	o	o	o	o	o	o	o	o	o	.
c172b_33	No0049	1413+135	3mm_RDBE	.	.	.	.	o	o	o	o	o	o	o	o	o	o	.
c172b_34	No0050	1413+135	3mm_RDBE	.	.	.	.	o	o	o	o	o	o	o	o	o	o	.
c172b_35	No0052	1502+106	3mm_RDBE	.	.	.	.	o	o	o	o	o	o	o	o	o	o	.
c172b_36	No0054	1413+135	3mm_RDBE	.	.	.	.	o	o	o	o	o	o	o	o	o	o	.
c172b_37	No0055	1413+135	3mm_RDBE	.	.	.	.	o	o	o	o	o	o	o	o	o	o	.
c172b_38	No0056	1413+135	3mm_RDBE	.	.	.	.	o	o	o	o	o	o	o	o	o	o	.
c172b_39	No0058	1413+135	3mm_RDBE	.	.	.	.	o	o	o	o	o	o	o	o	o	o	.
c172b_40	No0060	3C345	3mm_RDBE	.	.	.	.	o	o	o	o	o	o	o	o	o	o	.