

## General

- Session info: <http://www3.mpifr-bonn.mpg.de/div/vlbi/globalmm/>
- The experiment consist of 3mm GMVA and a 7mm VLBA-only part (without Gb in that case)

## Status

What	Date
Correlation 2nd round finished	27.7.2017
Conversion to HOPS (note that the KVN setup leads to problems on other baselines)	1.8.2017
Fourfit fringe fitting	2.8.2017
FITS export	8.8.2017
PCList check	7.8.2017
Read into AIPS and spot checking	

## Fringe search

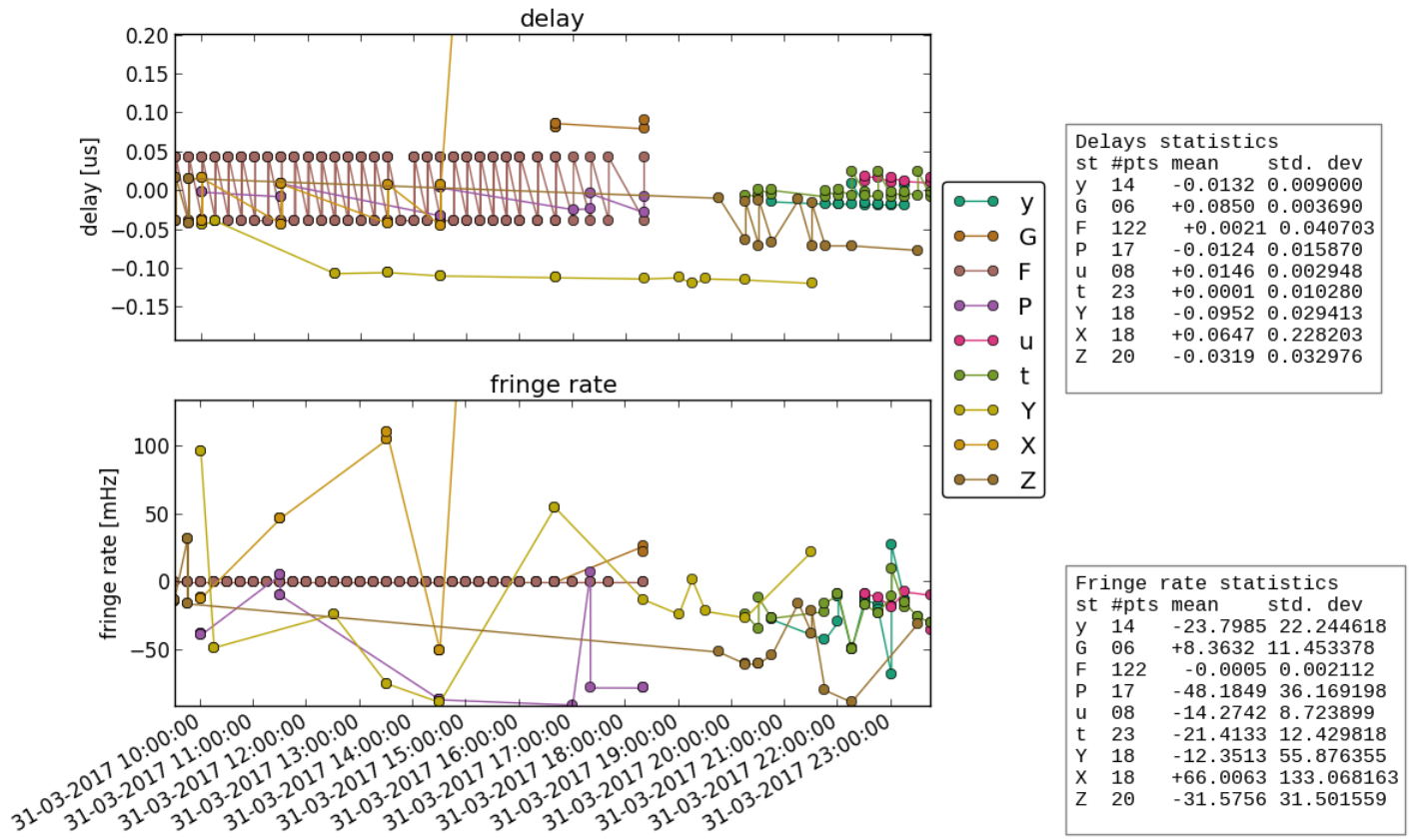
Station	Code	Fringes 3mm	Fringes 7mm	Comment
Ef	F	yes <a href="#">No0263_F.pdf</a>		Effelsberg DBBC2
Eb	B	yes <a href="#">No0263_B.pdf</a>		Effelsberg RDBE
On	X	yes <a href="#">EbOn-LL</a> , <a href="#">EbOn-RR</a> <a href="#">MhOn-LL</a> , <a href="#">MhOn-RR</a>		
Mh	Z	yes <a href="#">EbMh-LL</a> , <a href="#">EbMh-RR</a>		
Pv	P	yes <a href="#">No0263_P.pdf</a>		
Ys	Y	yes <a href="#">EbYs-LL</a> , <a href="#">EbYs-RR</a>		LCP only
Gb	G	yes <a href="#">No0136_G.pdf</a>		
Mk	m	yes <a href="#">No0232_m.pdf</a>	yes <a href="#">No0205_b.pdf</a>	
Pt	p	yes <a href="#">No0144_l.pdf</a>	yes <a href="#">No0205_b.pdf</a>	Weak 3mm fringes only to LA (3C84 scans only)
NI	n	yes <a href="#">No0210_n.pdf</a>	yes <a href="#">No0205_b.pdf</a>	Weak 3mm fringes only to FD&GB (No0210,No0190)
La	l	yes <a href="#">No0144_l.pdf</a>	yes <a href="#">No0205_b.pdf</a>	
Kp	k	yes <a href="#">No0144_l.pdf</a>	yes <a href="#">No0205_b.pdf</a>	
Ov	o	yes <a href="#">No0144_l.pdf</a>	yes <a href="#">No0205_b.pdf</a>	
Br	b	yes <a href="#">No0144_l.pdf</a>	yes <a href="#">No0205_b.pdf</a>	
Fd	f	yes <a href="#">No0144_l.pdf</a>	yes <a href="#">No0205_b.pdf</a>	
Kt	t	yes <a href="#">No0263_t.pdf</a>		
Ky	y	yes <a href="#">KtKy-LL</a>		
Ku	u	yes <a href="#">KtKu-LL</a>		

## Notes

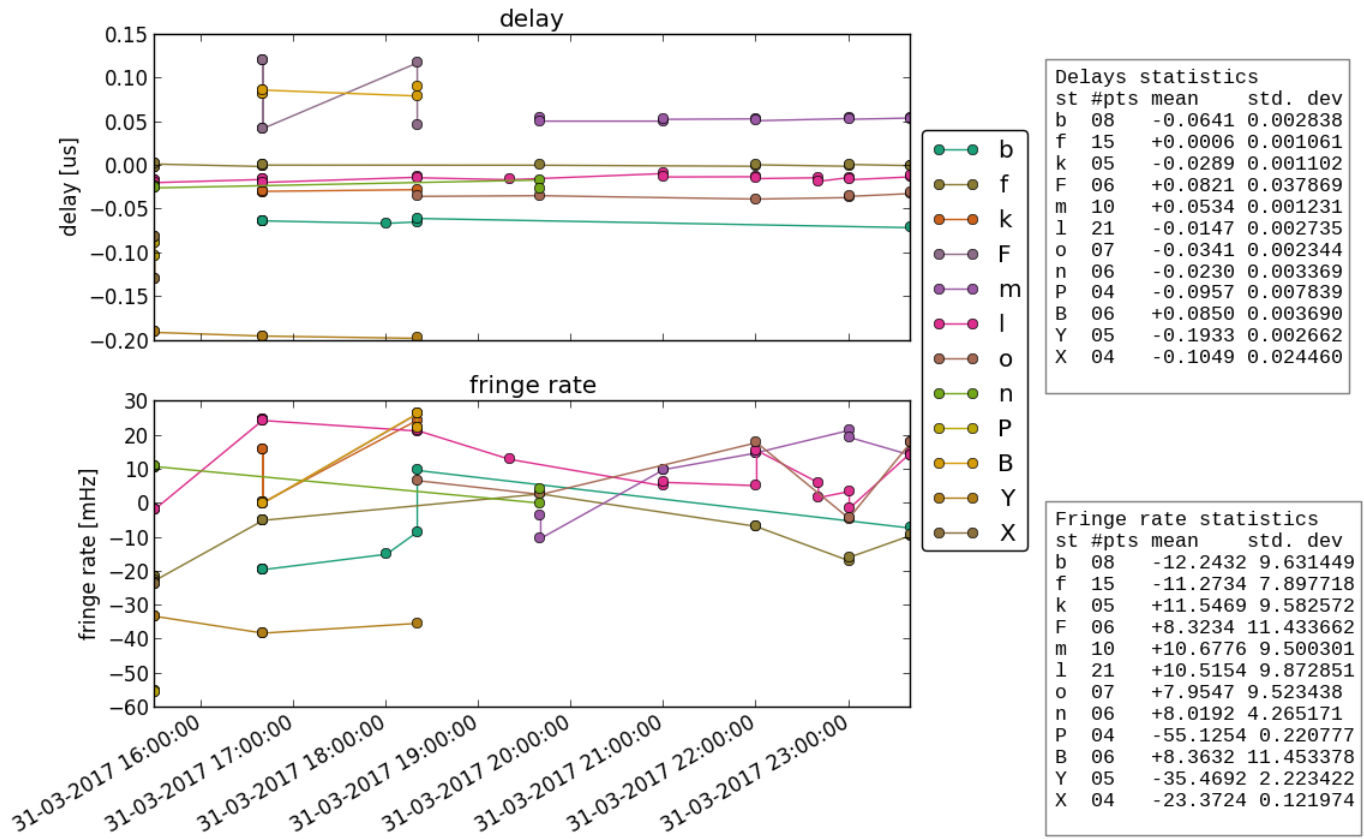
### Post-correlation checks

#### Residuals

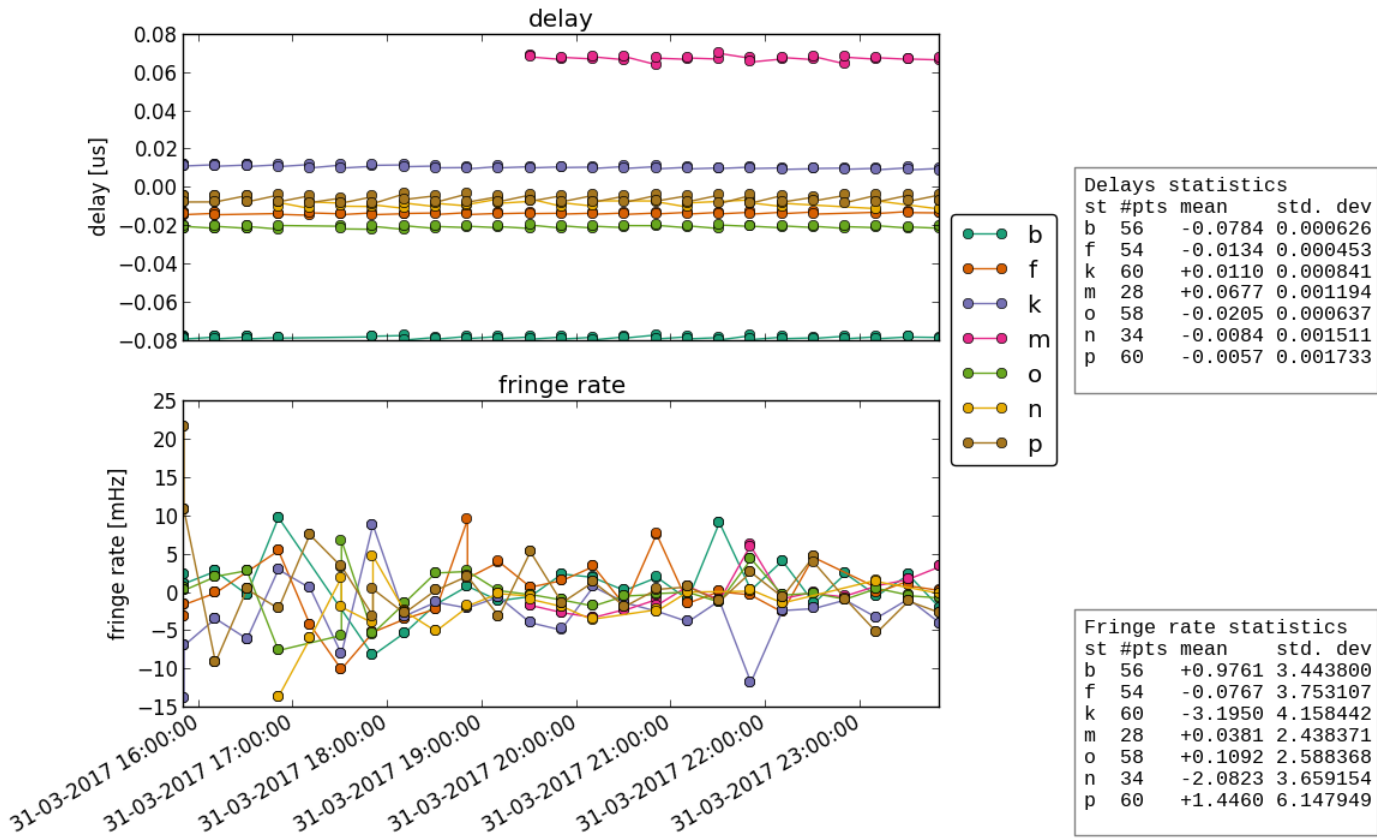
3mm, reference: B (Effelsberg RDBE):



**3mm. reference: G (GBT):**



7mm, reference l (La):



**FITS completeness (plist):**

Legend:

- o: station is included in the FITS-file (data is complete)
- x: expected station is missing in the FITS-file
- number: percentage of job time in the FITS-file compared to expected time.

**3mm**

				EB	EF	ON	YS	PV	MH	GB	FD	NL	PT	LA	OV	BR	KP	KY	KU	KT	MK	
c171b_01	No0108	3C84	3mm_RDBE	o	o	o	o	o	95	.	.	.	.	.	.	.	.	.	.	.	.	.
c171b_02	No0109	3C84	3mm_RDBE	o	o	o	o	o	95	.	.	.	.	.	.	.	.	.	.	.	.	.
c171b_03	No0110	0224+069	3mm_RDBE	o	o	o	o	o	95	.	.	.	.	.	.	.	.	.	.	.	.	.
c171b_04	No0111	0224+069	3mm_RDBE	o	o	o	o	o	95	.	.	.	.	.	.	.	.	.	.	.	.	.
c171b_05	No0112	NGC1052	3mm_RDBE	o	o	o	o	o	95	.	.	.	.	.	.	.	.	.	.	.	.	.
c171b_06	No0113	NGC1052	3mm_RDBE	o	o	o	o	o	95	.	.	.	.	.	.	.	.	.	.	.	.	.
c171b_07	No0114	NGC1052	3mm_RDBE	o	o	o	o	o	95	.	.	.	.	.	.	.	.	.	.	.	.	.
c171b_08	No0115	NGC1052	3mm_RDBE	o	o	o	o	o	95	.	.	.	.	.	.	.	.	.	.	.	.	.
c171b_09	No0116	0224+069	3mm_RDBE	o	o	o	o	o	95	.	.	.	.	.	.	.	.	.	.	.	.	.
c171b_10	No0117	NGC1052	3mm_RDBE	o	o	o	o	o	95	.	.	.	.	.	.	.	.	.	.	.	.	.
c171b_11	No0118	NGC1052	3mm_RDBE	o	o	o	o	o	95	.	.	.	.	.	.	.	.	.	.	.	.	.
c171b_12	No0119	NGC1052	3mm_RDBE	o	o	o	o	o	95	.	.	.	.	.	.	.	.	.	.	.	.	.

c171b_13	No0120	0224+069	3mm_RDBE	o	o	o	o	o	o	.	.	.	.	.	.	.	.	.	.	.	.
c171b_14	No0121	NGC1052	3mm_RDBE	o	o	o	o	o	o	.	.	.	.	.	.	.	.	.	.	.	.
c171b_15	No0122	NGC1052	3mm_RDBE	o	o	o	o	o	o	.	.	.	.	.	.	.	.	.	.	.	.
c171b_16	No0123	NGC1052	3mm_RDBE	o	o	o	o	o	95	.	.	.	.	.	.	.	.	.	.	.	.
c171b_17	No0124	0224+069	3mm_RDBE	o	o	o	o	o	95	.	.	.	.	.	.	.	.	.	.	.	.
c171b_18	No0125	NGC1052	3mm_RDBE	o	o	o	o	o	95	.	.	.	.	.	.	.	.	.	.	.	.
c171b_19	No0126	NGC1052	3mm_RDBE	o	o	o	o	o	95	.	.	.	.	.	.	.	.	.	.	.	.
c171b_20	No0127	NGC1052	3mm_RDBE	o	o	o	o	o	95	.	.	.	.	.	.	.	.	.	.	.	.
c171b_21	No0128	0224+069	3mm_RDBE	o	o	o	o	o	95	.	.	.	.	.	.	.	.	.	.	.	.
c171b_22	No0129	NGC1052	3mm_RDBE	o	o	o	o	o	95	.	.	.	.	.	.	.	.	.	.	.	.
c171b_23	No0131	NGC1052	3mm_RDBE	o	o	o	o	o	95	.	.	.	.	.	.	.	.	.	.	.	.
c171b_24	No0132	NGC1052	3mm_RDBE	o	o	o	o	o	o	.	.	.	.	.	.	.	.	.	.	.	.
c171b_25	No0136	0224+069	3mm_RDBE	o	o	o	o	o	91	o	o	o	o	o	.	.	.	.	.	.	.
c171b_26	No0139	NGC1052	3mm_RDBE	o	o	o	o	o	.	o	.	o	.	.	.	.	.	.	.	.	.
c171b_27	No0144	3C84	3mm_RDBE	.	.	.	.	.	o	.	o	.	o	o	o	o	o	o	.	.	.
c171b_28	No0148	NGC1052	3mm_RDBE	o	o	o	o	o	.	o	.	o	.	.	.	.	.	.	.	.	.
c171b_29	No0153	3C84	3mm_RDBE	.	.	.	.	.	o	.	o	.	o	o	o	o	o	.	.	.	.
c171b_30	No0157	NGC1052	3mm_RDBE	o	o	o	o	o	.	o	o	o	.	.	.	.	.	.	.	.	.
c171b_31	No0162	3C84	3mm_RDBE	.	.	.	.	.	o	.	.	.	o	o	o	o	o	.	.	.	.
c171b_32	No0169	0224+069	3mm_RDBE	o	o	o	o	o	.	o	o	o	o	o	o	o	o	o	.	.	.
c171b_33	No0172	NGC1052	3mm_RDBE	o	o	o	o	o	.	o	o	o	o	o	.	.	o	.	.	.	.
c171b_34	No0177	NGC1052	3mm_RDBE	o	o	.	o	o	.	o	o	o	o	o	o	.	o	.	.	.	.
c171b_35	No0181	NGC1052	3mm_RDBE	o	o	.	o	73	.	o	o	o	o	o	o	o	o	.	.	.	.
c171b_36	No0185	NGC1052	3mm_RDBE	.	.	.	o	o	.	o	o	o	o	o	o	o	o	.	.	.	.
c171b_37	No0190	0224+069	3mm_RDBE	o	o	.	o	o	.	o	o	o	o	o	o	o	o	o	.	.	.
c171b_38	No0194	NGC1052	3mm_RDBE	.	.	.	o	o	.	o	o	o	o	o	o	o	o	.	.	.	.
c171b_39	No0198	NGC1052	3mm_RDBE	.	.	.	.	.	.	o	o	o	o	o	o	o	o	.	.	.	.
c171b_40	No0200	1803+784	3mm_RDBE	o	o	o	o	o	o	.	.	.	.	.	.	.	o	o	o	.	.
c171b_41	No0201	1803+784	3mm_RDBE	o	o	o	o	o	o	.	.	.	.	.	.	.	o	x	o	.	.
c171b_42	No0204	NGC1052	3mm_RDBE	.	.	.	.	.	.	o	o	o	o	o	o	o	o	.	.	.	o
c171b_43	No0206	1803+784	3mm_RDBE	o	o	o	o	o	.	.	.	.	.	.	.	.	o	22	o	.	.
c171b_44	No0210	0224+069	3mm_RDBE	.	.	.	.	.	.	o	o	o	o	o	o	o	o	.	.	.	o
c171b_45	No0212	1803+784	3mm_RDBE	o	o	o	o	o	o	.	.	.	.	.	.	.	o	o	o	.	.
c171b_46	No0215	NGC1052	3mm_RDBE	.	.	.	.	.	.	o	o	o	o	o	o	o	.	.	.	.	o
c171b_47	No0217	1803+784	3mm_RDBE	o	o	o	o	o	o	.	.	.	.	.	.	.	o	o	o	.	.
c171b_48	No0218	1803+784	3mm_RDBE	o	o	o	o	o	.	.	.	.	.	.	.	.	o	o	o	.	.
c171b_49	No0221	NGC1052	3mm_RDBE	.	.	.	.	.	.	o	o	o	o	o	o	o	.	.	.	.	o
c171b_50	No0223	1803+784	3mm_RDBE	o	o	o	o	o	o	.	.	.	.	.	.	.	o	o	o	.	.
c171b_51	No0226	NGC1052	3mm_RDBE	.	.	.	.	.	.	o	o	o	o	o	o	o	.	.	.	.	o
c171b_52	No0228	1803+784	3mm_RDBE	o	o	o	o	o	o	.	.	.	.	.	.	.	o	o	o	.	.
c171b_53	No0232	0224+069	3mm_RDBE	.	.	.	.	.	.	o	o	o	o	o	o	o	.	.	.	.	o
c171b_54	No0234	3C345	3mm_RDBE	o	o	o	o	o	o	.	.	.	.	.	.	.	o	o	o	.	.
c171b_55	No0235	3C345	3mm_RDBE	o	o	o	o	o	o	.	.	.	.	.	.	.	o	o	o	.	.
c171b_56	No0238	NGC1052	3mm_RDBE	.	.	.	.	.	.	o	o	o	o	o	o	o	.	.	.	.	o
c171b_57	No0240	3C345	3mm_RDBE	o	o	o	o	o	o	.	.	.	.	.	.	.	o	o	o	.	.
c171b_58	No0243	NGC1052	3mm_RDBE	.	.	.	.	.	.	o	o	o	o	o	o	o	.	.	.	.	o
c171b_59	No0245	3C345	3mm_RDBE	o	o	o	o	o	o	.	.	.	.	.	.	.	o	o	o	.	.
c171b_60	No0249	0224+069	3mm_RDBE	.	.	.	.	.	.	o	o	o	o	o	o	o	.	.	.	.	o
c171b_61	No0251	3C345	3mm_RDBE	o	o	o	o	o	o	.	.	.	.	.	.	.	o	o	o	.	.
c171b_62	No0252	3C345	3mm_RDBE	o	o	o	o	o	o	.	.	.	.	.	.	.	o	o	o	.	.

```

c171b_63 No0255 NGC1052 3mm_RDBE . . . . . o o o o o o o o . . . o
c171b_64 No0257 3C345 3mm_RDBE o o o o o o . . . . . o o o .
c171b_65 No0261 NGC1052 3mm_RDBE . . . . . o o o o o o o o . . . o
c171b_66 No0263 3C345 3mm_RDBE o o o o o o . . . . . o o o .
c171b_67 No0267 0224+069 3mm_RDBE . . . . . o o o o o o o o . . . o
c171b_68 No0269 3C345 3mm_RDBE o o o o 45 o . . . . . 90 o o .
c171b_69 No0270 3C345 3mm_RDBE o o o o o o . . . . . o o o .
c171b_70 No0273 NGC1052 3mm_RDBE . . . . . o o o o o o o o . . . o
c171b_71 No0275 3C345 3mm_RDBE o o o o o o . . . . . x o o .
c171b_72 No0279 0224+069 3mm_RDBE . . . . . o o o o o o o o . . . o
c171b_73 No0281 3C345 3mm_RDBE o o o o o o . . . . . x o o .

```

**7mm**

EB EF ON YS PV MH GB FD NL PT LA OV BR KP KY KU KT MK

```

No0145 3C84 7mm_RDBE . . . . . o . o o o o o . . . . .
No0154 3C84 7mm_RDBE . . . . . o . o o o o o . . . . .
No0163 3C84 7mm_RDBE . . . . . o o o o o o . . . . .
No0170 0224+069 7mm_RDBE . . . . . o o o o o o o . . . . .
No0173 NGC1052 7mm_RDBE . . . . . o o o o . . o . . . . .
No0178 NGC1052 7mm_RDBE . . . . . o o o o o . o . . . . .
No0182 NGC1052 7mm_RDBE . . . . . o o o o o o o . . . . .
No0186 NGC1052 7mm_RDBE . . . . . o o o o o o o . . . . .
No0191 0224+069 7mm_RDBE . . . . . o o o o o o o . . . . .
No0195 NGC1052 7mm_RDBE . . . . . o o o o o o o . . . . .
No0199 NGC1052 7mm_RDBE . . . . . o o o o o o o . . . . .
No0205 NGC1052 7mm_RDBE . . . . . o o o o o o o . . . . o
No0211 0224+069 7mm_RDBE . . . . . o o o o o o o . . . . o
No0216 NGC1052 7mm_RDBE . . . . . o o o o o o o . . . . o
No0222 NGC1052 7mm_RDBE . . . . . o o o o o o o . . . . o
No0227 NGC1052 7mm_RDBE . . . . . o o o o o o o . . . . o
No0233 0224+069 7mm_RDBE . . . . . o o o o o o o . . . . o
No0239 NGC1052 7mm_RDBE . . . . . o o o o o o o . . . . o
No0244 NGC1052 7mm_RDBE . . . . . o o o o o o o . . . . o
No0250 0224+069 7mm_RDBE . . . . . o o o o o o o . . . . o
No0256 NGC1052 7mm_RDBE . . . . . o o o o o o o . . . . o
No0262 NGC1052 7mm_RDBE . . . . . o o o o o o o . . . . o
No0268 0224+069 7mm_RDBE . . . . . o o o o o o o . . . . o
No0274 NGC1052 7mm_RDBE . . . . . o o o o o o o . . . . o
No0280 0224+069 7mm_RDBE . . . . . 42 42 42 42 42 42 . . . 42

```