

General

- Session info: <http://www3.mpifr-bonn.mpg.de/div/vlbi/globalmm/>
- The experiment consist of 3mm GMVA and a 7mm VLBA-only part (without Gb in that case)

Status

What	Date
Correlation 2nd round finished	27.7.2017
Conversion to HOPS (note that the KVN setup leads to problems on other baselines)	1.8.2017
Fourfit fringe fitting	2.8.2017
FITS export	8.8.2017
PCList check	7.8.2017
Read into AIPS and spot checking	

Fringe search

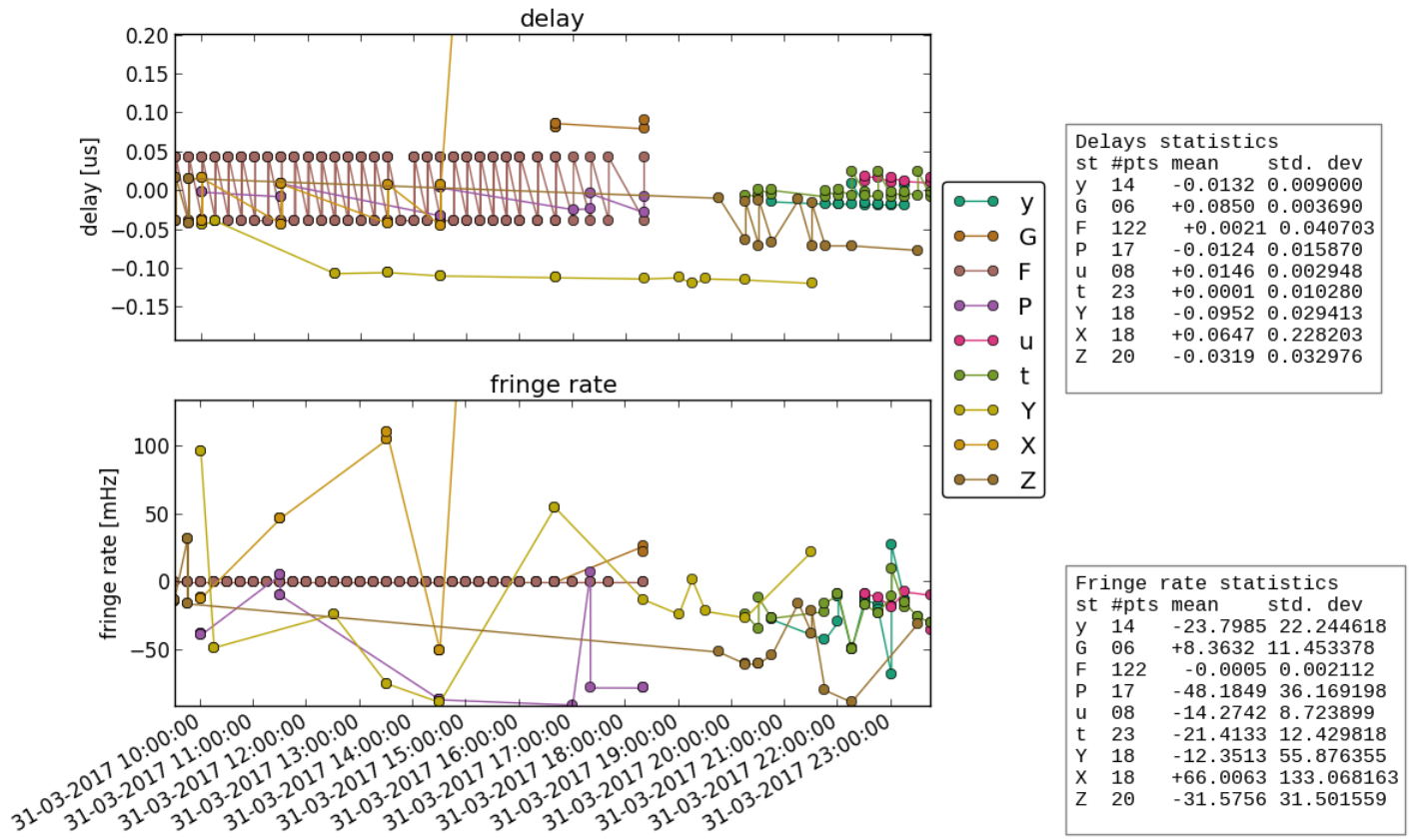
Station	Code	Fringes 3mm	Fringes 7mm	Comment
Ef	F	yes No0263_F.pdf		Effelsberg DBBC2
Eb	B	yes No0263_B.pdf		Effelsberg RDBE
On	X	yes EbOn-LL , EbOn-RR MhOn-LL , MhOn-RR		
Mh	Z	yes EbMh-LL , EbMh-RR		
Pv	P	yes No0263_P.pdf		
Ys	Y	yes EbYs-LL , EbYs-RR		LCP only
Gb	G	yes No0136_G.pdf		
Mk	m	yes No0232_m.pdf	yes No0205_b.pdf	
Pt	p	yes No0144_l.pdf	yes No0205_b.pdf	Weak 3mm fringes only to LA (3C84 scans only)
NI	n	yes No0210_n.pdf	yes No0205_b.pdf	Weak 3mm fringes only to FD&GB (No0210,No0190)
La	l	yes No0144_l.pdf	yes No0205_b.pdf	
Kp	k	yes No0144_l.pdf	yes No0205_b.pdf	
Ov	o	yes No0144_l.pdf	yes No0205_b.pdf	
Br	b	yes No0144_l.pdf	yes No0205_b.pdf	
Fd	f	yes No0144_l.pdf	yes No0205_b.pdf	
Kt	t	yes No0263_t.pdf		
Ky	y	yes KtKy-LL		
Ku	u	yes KtKu-LL		

Notes

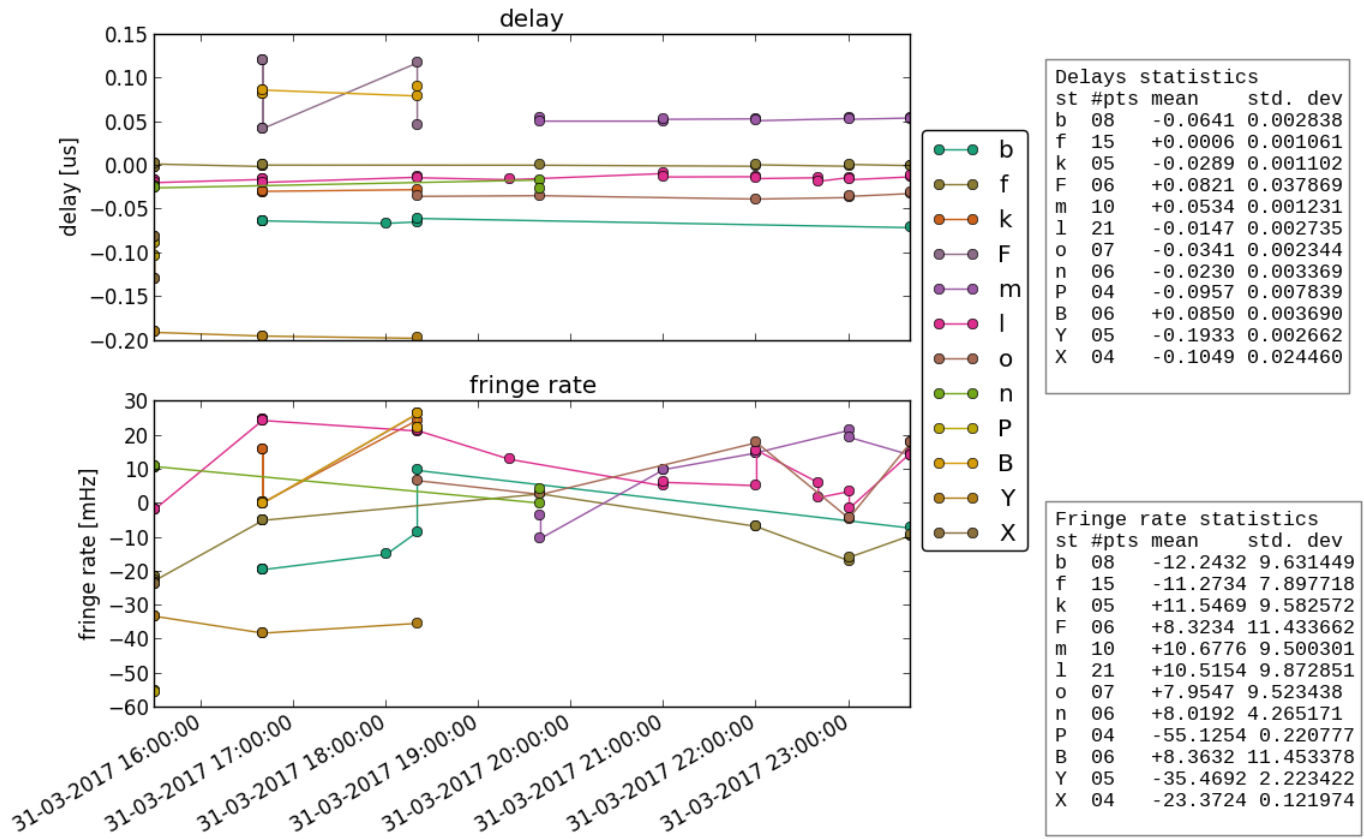
Post-correlation checks

Residuals

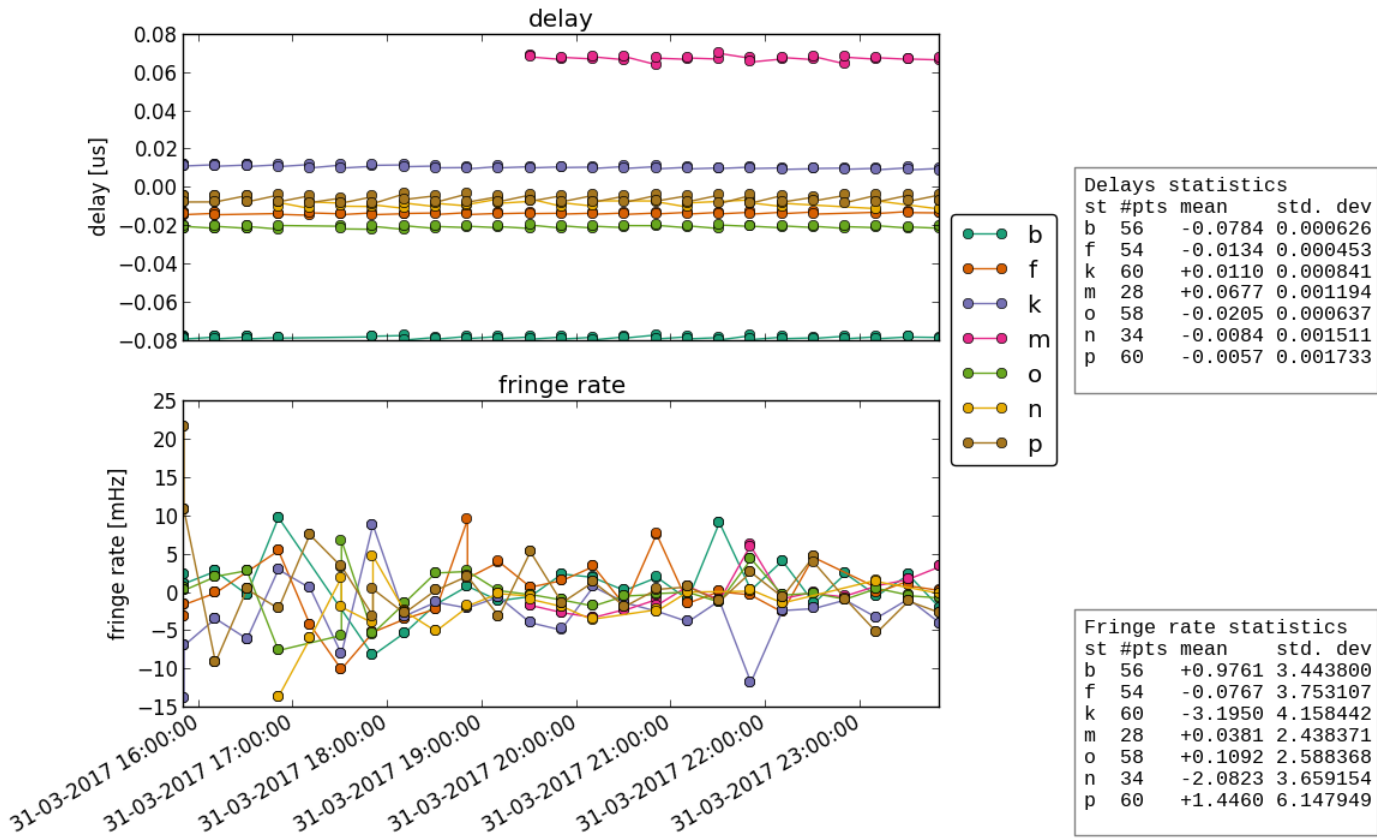
3mm, reference: B (Effelsberg RDBE):



3mm. reference: G (GBT):



7mm, reference l (La):



FITS completeness (plist):

Legend:

- o: station is included in the FITS-file (data is complete)
- x: expected station is missing in the FITS-file
- number: percentage of job time in the FITS-file compared to expected time.

3mm

				EB	EF	ON	YS	PV	MH	GB	FD	NL	PT	LA	OV	BR	KP	KY	KU	KT	MK	
c171b_01	No0108	3C84	3mm_RDBE	o	o	o	o	o	95
c171b_02	No0109	3C84	3mm_RDBE	o	o	o	o	o	95
c171b_03	No0110	0224+069	3mm_RDBE	o	o	o	o	o	95
c171b_04	No0111	0224+069	3mm_RDBE	o	o	o	o	o	95
c171b_05	No0112	NGC1052	3mm_RDBE	o	o	o	o	o	95
c171b_06	No0113	NGC1052	3mm_RDBE	o	o	o	o	o	95
c171b_07	No0114	NGC1052	3mm_RDBE	o	o	o	o	o	95
c171b_08	No0115	NGC1052	3mm_RDBE	o	o	o	o	o	95
c171b_09	No0116	0224+069	3mm_RDBE	o	o	o	o	o	95
c171b_10	No0117	NGC1052	3mm_RDBE	o	o	o	o	o	95
c171b_11	No0118	NGC1052	3mm_RDBE	o	o	o	o	o	95
c171b_12	No0119	NGC1052	3mm_RDBE	o	o	o	o	o	95

