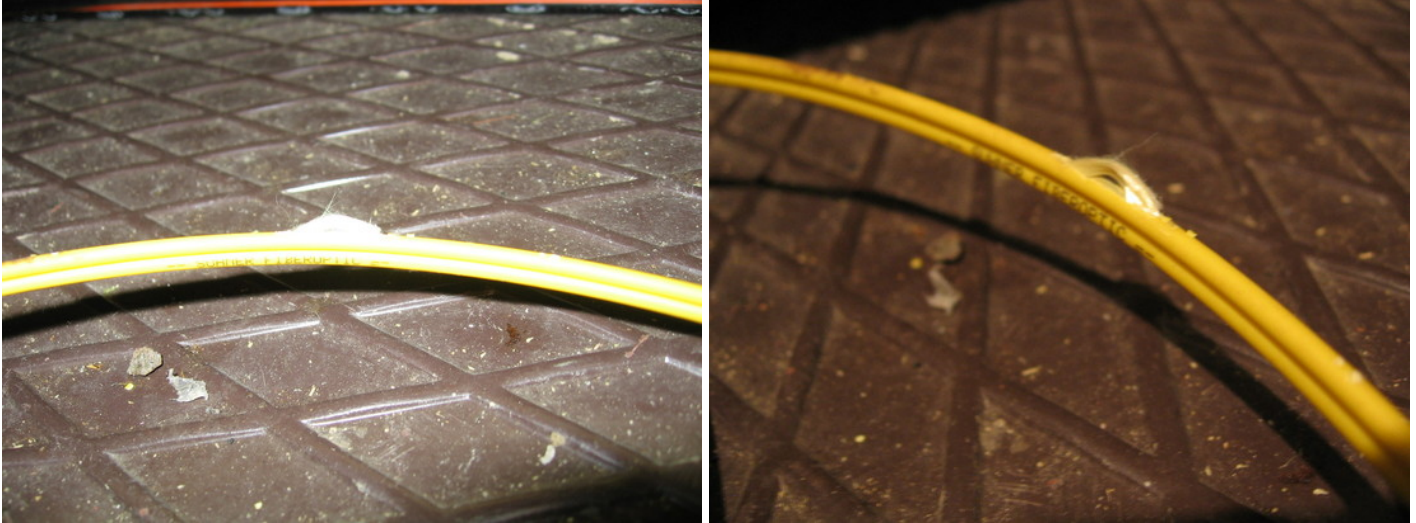


2013 May 07

The LOFAR HP switch was moved from the Effelsberg Faraday room to the RZ group in Bonn

Mice have been chewing on the data fiber connecting the S3 and S2 switches in the LOFAR container in Effelsberg.



2013 May 13

Report by James M Anderson

Bad LBA RCUs (low power in spectra): 70, 76, 77,106

Bad HBA RCUs(funny spectra): 18,19,37,54

(Use following RCUs: 0:17,20:35,38:53,56:191)

2013 May 15

Effelsberg temperature history for two weeks. The thermal stability is not as good as some other international stations.

