

Observing Plan for Station Control (LCU)

MPIfR Effelsberg LOFAR Station

2014-02-01 through 2014-02-28

For any publication based on observations with the Effelsberg LOFAR station, please use the following acknowledgment: "Based on observations made with the Effelsberg LOFAR station of the Max-Planck-Institut für Radioastronomie (MPIfR) at Effelsberg."

Date	CET																								Code Markers	
	0	1	2	3	4	5	6	7	8	9	10	11	12	13	14	15	16	17	18	19	20	21	22	23		0
2014-02-01	Sa	ELI2014-000 ILT Operations																								
2014-02-02	Su	ELI2014-000 ILT Operations																								
2014-02-03	Mo	ELI2014-000 ILT Operations										*0	ELP2014-000A Verbiest, Osowski													
2014-02-04	Tu	ELP2014-000A Verbiest, Osowski																								
2014-02-05	We	ELP2014-000A Verbiest, Osowski																								
2014-02-06	Th	ELP2014-000A Verbiest, Osowski										*0	ELI2014-000 ILT Operations													
2014-02-07	Fr	ELI2014-000 ILT Operations																								
2014-02-08	Sa	ELI2014-000 ILT Operations																								
2014-02-09	Su	ELI2014-000 ILT Operations																								
2014-02-10	Mo	ELI2014-000 ILT Operations										*0	ELP2014-000A Verbiest, Osowski													
2014-02-11	Tu	ELP2014-000A Verbiest, Osowski																								
2014-02-12	We	ELP2014-000A Verbiest, Osowski																								
2014-02-13	Th	ELP2014-000A Verbiest, Osowski										*0	ELI2014-000 ILT Operations													
2014-02-14	Fr	ELI2014-000 ILT Operations																								
2014-02-15	Sa	ELI2014-000 ILT Operations																								
2014-02-16	Su	ELI2014-000 ILT Operations																								
2014-02-17	Mo	ELI2014-000 ILT Operations										*0	ELX2014-001A Horneffer													
2014-02-18	Tu	ELX2014-001A Horneffer																								
2014-02-19	We	ELX2014-001A Horneffer																								
2014-02-20	Th	ELX2014-001A Horneffer																								
2014-02-21	Fr	ELX2014-001A Horneffer										*0	ELI2014-000 ILT Operations													
2014-02-22	Sa	ELI2014-000 ILT Operations																								
2014-02-23	Su	ELI2014-000 ILT Operations																								
2014-02-24	Mo	ELI2014-000 ILT Operations										*0														
2014-02-25	Tu																									
2014-02-26	We																									
2014-02-27	Th	*0										ELI2014-000 ILT Operations														
2014-02-28	Fr	ELI2014-000 ILT Operations																								

UTC 23 0 1 2 3 4 5 6 7 8 9 10 11 12 13 14 15 16 17 18 19 20 21 22 23
 LST 12 Sunrise 18 0 Sunset 6

Normal Experiment Code Markers

0 ELM2014-000 Kuniyoshi, Horneff

Other Code Markers

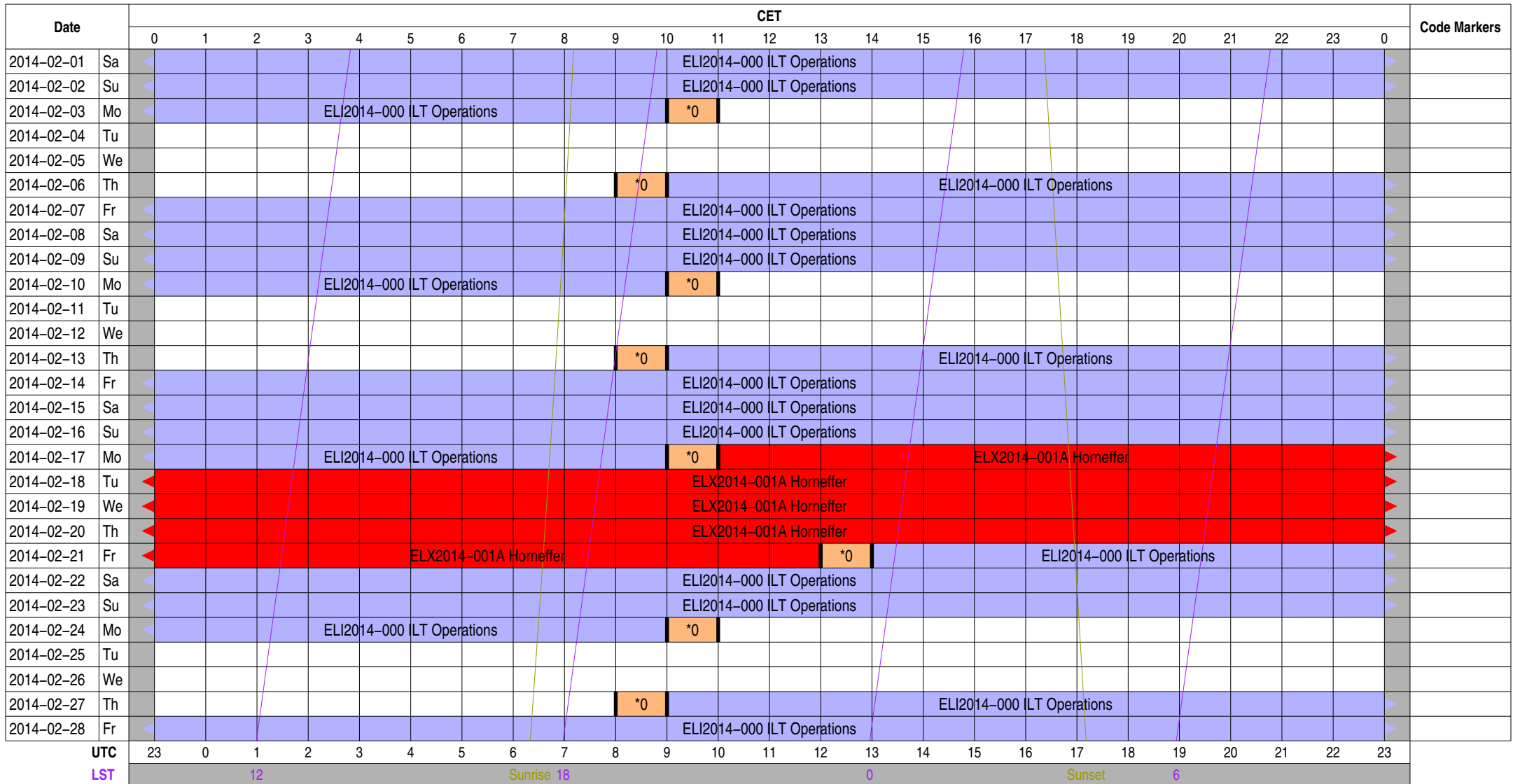
Color Meanings

Science A (Astrometry)	Science O (Other)	ILT Mode	Piggyback Without Control
Science C (Cosmology)	Science P (Pulsar)	Effelsberg Mode	Experiment Warning
Science E (Extragalactic)	Science R (Cosmic Rays)	GLOW Mode	Override Possible
Science G (Galactic)	Science S (Solar System)	Juelich Mode	
Science H (Ionosphere)	Test Observation	Station Failure	
Science N (AGN)	Maintenance Mode	Piggyback Control	

Observing Plan for Transient Buffer Boards

MPIfR Effelsberg LOFAR Station

2014-02-01 through 2014-02-28



Normal Experiment Code Markers

0 ELM2014-000 Kuniyoshi, Horneff

Other Code Markers

Color Meanings

Science A (Astrometry)	Science O (Other)	ILT Mode	Piggyback Without Control
Science C (Cosmology)	Science P (Pulsar)	Effelsberg Mode	Experiment Warning
Science E (Extragalactic)	Science R (Cosmic Rays)	GLOW Mode	Override Possible
Science G (Galactic)	Science S (Solar System)	Juelich Mode	
Science H (Ionosphere)	Test Observation	Station Failure	
Science N (AGN)	Maintenance Mode	Piggyback Control	

Observing Plan for HBA MPIfR Effelsberg LOFAR Station 2014-02-01 through 2014-02-28

For any publication based on observations with the Effelsberg LOFAR station, please use the following acknowledgment: "Based on observations made with the Effelsberg LOFAR station of the Max-Planck-Institut für Radioastronomie (MPIfR) at Effelsberg."

Date	CET																								Code Markers
	0	1	2	3	4	5	6	7	8	9	10	11	12	13	14	15	16	17	18	19	20	21	22	23	
2014-02-01	Sa	ELI2014-000 ILT Operations																							
2014-02-02	Su	ELI2014-000 ILT Operations																							
2014-02-03	Mo	ELI2014-000 ILT Operations										*0	ELP2014-000A Verbiest, Osowski												
2014-02-04	Tu	ELP2014-000A Verbiest, Osowski																							
2014-02-05	We	ELP2014-000A Verbiest, Osowski																							
2014-02-06	Th	ELP2014-000A Verbiest, Osowski										*0	ELI2014-000 ILT Operations												
2014-02-07	Fr	ELI2014-000 ILT Operations																							
2014-02-08	Sa	ELI2014-000 ILT Operations																							
2014-02-09	Su	ELI2014-000 ILT Operations																							
2014-02-10	Mo	ELI2014-000 ILT Operations										*0	ELP2014-000A Verbiest, Osowski												
2014-02-11	Tu	ELP2014-000A Verbiest, Osowski																							
2014-02-12	We	ELP2014-000A Verbiest, Osowski																							
2014-02-13	Th	ELP2014-000A Verbiest, Osowski										*0	ELI2014-000 ILT Operations												
2014-02-14	Fr	ELI2014-000 ILT Operations																							
2014-02-15	Sa	ELI2014-000 ILT Operations																							
2014-02-16	Su	ELI2014-000 ILT Operations																							
2014-02-17	Mo	ELI2014-000 ILT Operations										*0	ELX2014-001A Horneffer												
2014-02-18	Tu	ELX2014-001A Horneffer																							
2014-02-19	We	ELX2014-001A Horneffer																							
2014-02-20	Th	ELX2014-001A Horneffer																							
2014-02-21	Fr	ELX2014-001A Horneffer										*0	ELI2014-000 ILT Operations												
2014-02-22	Sa	ELI2014-000 ILT Operations																							
2014-02-23	Su	ELI2014-000 ILT Operations																							
2014-02-24	Mo	ELI2014-000 ILT Operations										*0													
2014-02-25	Tu																								
2014-02-26	We																								
2014-02-27	Th											*0	ELI2014-000 ILT Operations												
2014-02-28	Fr	ELI2014-000 ILT Operations																							

UTC 23 0 1 2 3 4 5 6 7 8 9 10 11 12 13 14 15 16 17 18 19 20 21 22 23
 LST 12 Sunrise 18 0 Sunset 6

Normal Experiment Code Markers

0 ELM2014-000 Kuniyoshi, Horneff

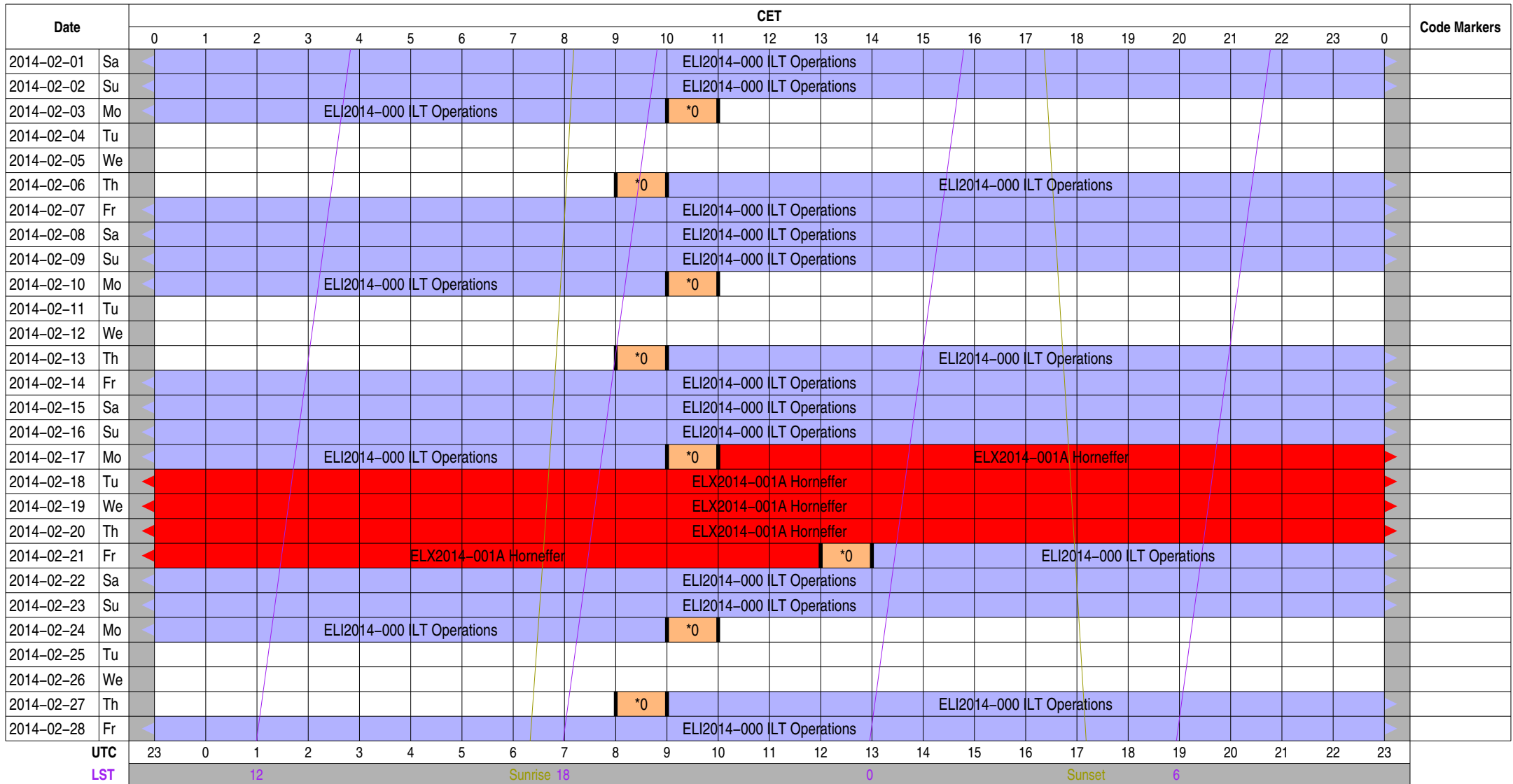
Other Code Markers

Color Meanings

Science A (Astrometry)	Science O (Other)	ILT Mode	Piggyback Without Control
Science C (Cosmology)	Science P (Pulsar)	Effelsberg Mode	Experiment Warning
Science E (Extragalactic)	Science R (Cosmic Rays)	GLOW Mode	Override Possible
Science G (Galactic)	Science S (Solar System)	Juelich Mode	
Science H (Ionosphere)	Test Observation	Station Failure	
Science N (AGN)	Maintenance Mode	Piggyback Control	

Observing Plan for Low Band High (LBA) MPIfR Effelsberg LOFAR Station 2014-02-01 through 2014-02-28

For any publication based on observations with the Effelsberg LOFAR station, please use the following acknowledgment: "Based on observations made with the Effelsberg LOFAR station of the Max-Planck-Institut für Radioastronomie (MPIfR) at Effelsberg."



Normal Experiment Code Markers

0 ELM2014-000 Kuniyoshi, Horneff

Other Code Markers

Color Meanings

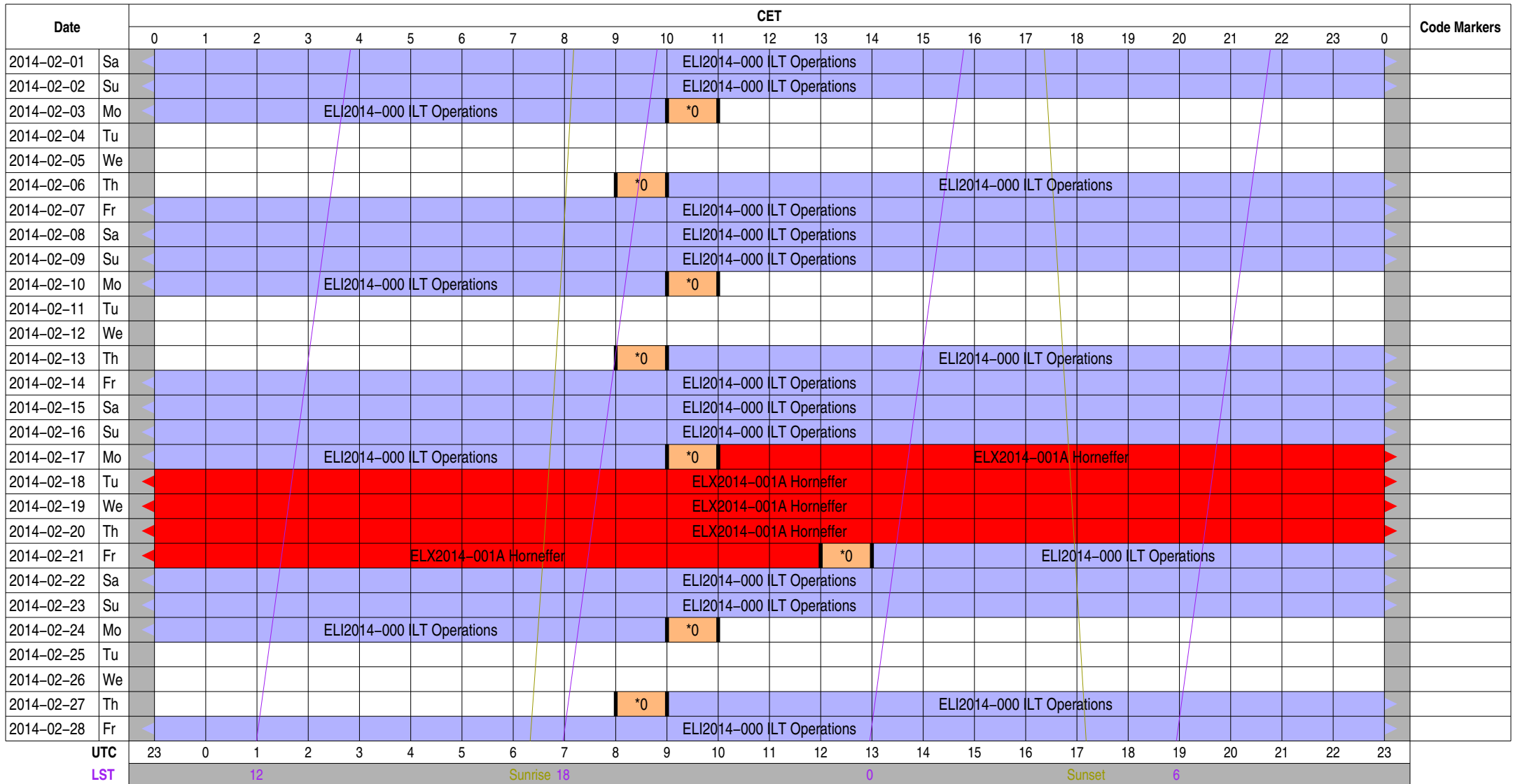
Science A (Astrometry)	Science O (Other)	ILT Mode	Piggyback Without Control
Science C (Cosmology)	Science P (Pulsar)	Effelsberg Mode	Experiment Warning
Science E (Extragalactic)	Science R (Cosmic Rays)	GLOW Mode	Override Possible
Science G (Galactic)	Science S (Solar System)	Juelich Mode	
Science H (Ionosphere)	Test Observation	Station Failure	
Science N (AGN)	Maintenance Mode	Piggyback Control	

Observing Plan for Low Band Low, Unused Inputs

MPIfR Effelsberg LOFAR Station

2014-02-01 through 2014-02-28

For any publication based on observations with the Effelsberg LOFAR station, please use the following acknowledgment: "Based on observations made with the Effelsberg LOFAR station of the Max-Planck-Institut für Radioastronomie (MPIfR) at Effelsberg."



Normal Experiment Code Markers

0 ELM2014-000 Kuniyoshi, Horneff

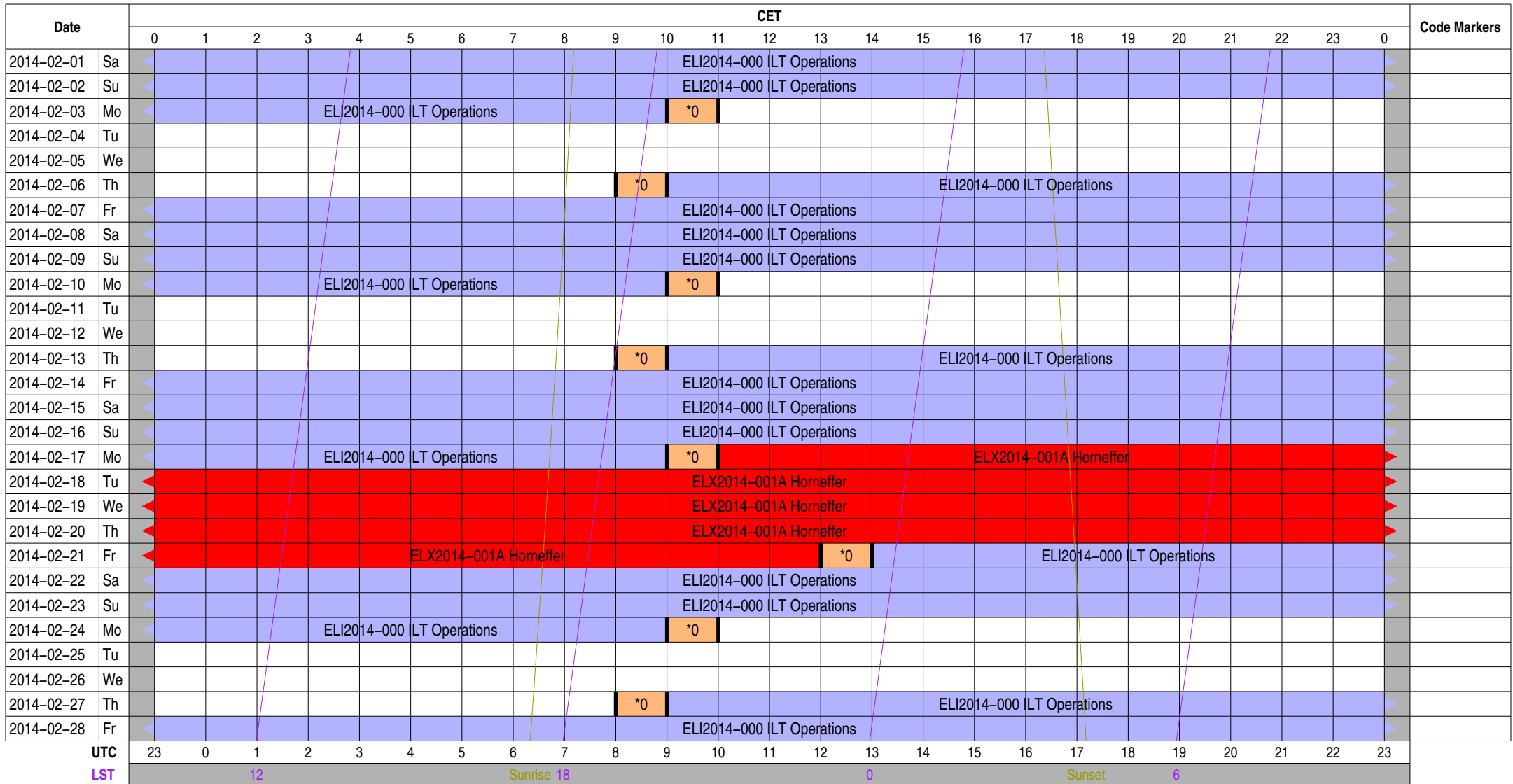
Other Code Markers

Color Meanings

Science A (Astrometry)	Science O (Other)	ILT Mode	Piggyback Without Control
Science C (Cosmology)	Science P (Pulsar)	Effelsberg Mode	Experiment Warning
Science E (Extragalactic)	Science R (Cosmic Rays)	GLOW Mode	Override Possible
Science G (Galactic)	Science S (Solar System)	Juelich Mode	
Science H (Ionosphere)	Test Observation	Station Failure	
Science N (AGN)	Maintenance Mode	Piggyback Control	

Observing Plan for Station Interferometer MPIfR Effelsberg LOFAR Station 2014-02-01 through 2014-02-28

For any publication based on observations with the Effelsberg LOFAR station, please use the following acknowledgment: "Based on observations made with the Effelsberg LOFAR station of the Max-Planck-Institut für Radioastronomie (MPIfR) at Effelsberg."



Normal Experiment Code Markers

0 ELM2014-000 Kuniyoshi, Horneff

Other Code Markers

Color Meanings

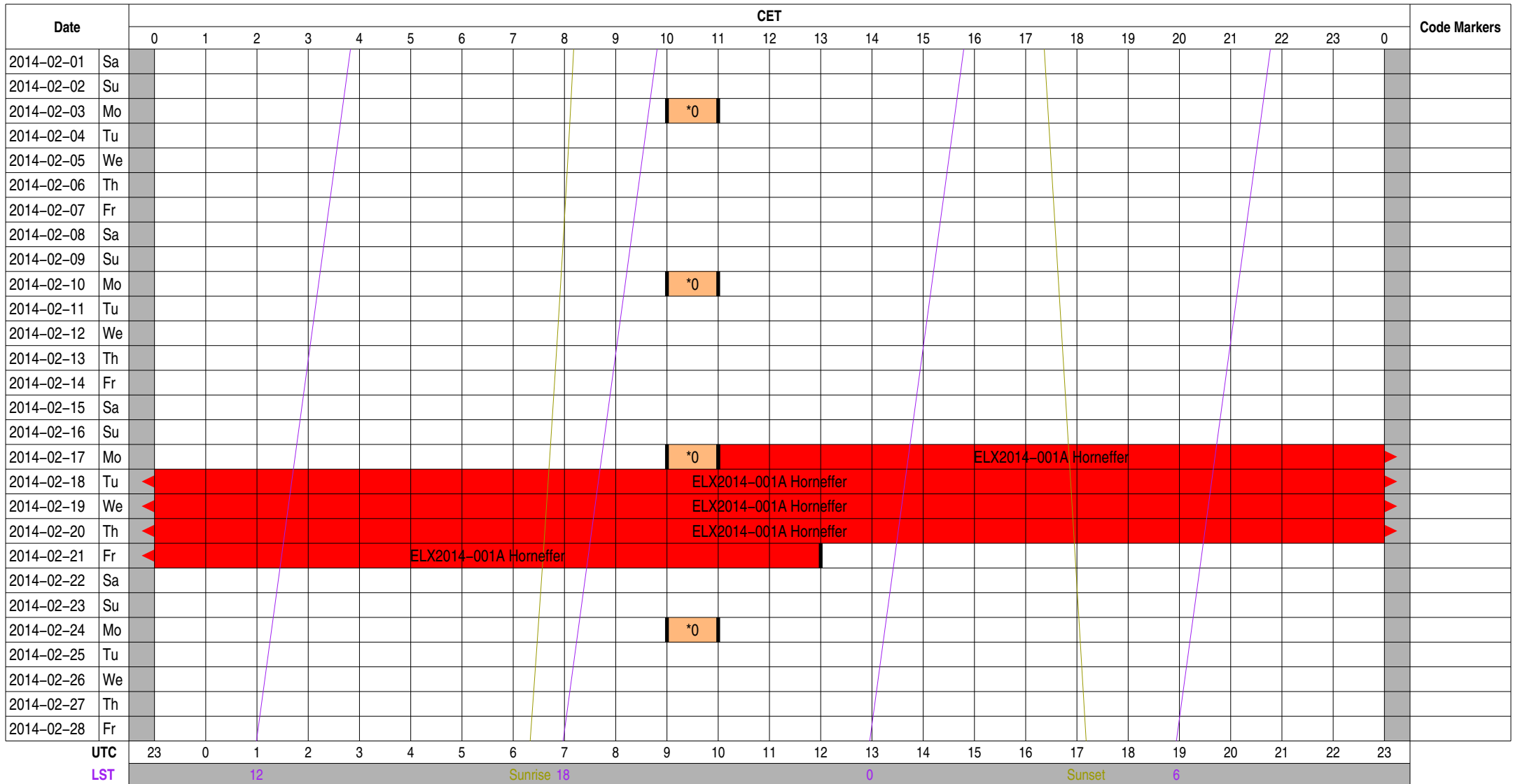
Science A (Astrometry)	Science O (Other)	ILT Mode	Piggyback Without Control
Science C (Cosmology)	Science P (Pulsar)	Effelsberg Mode	Experiment Warning
Science E (Extragalactic)	Science R (Cosmic Rays)	GLOW Mode	Override Possible
Science G (Galactic)	Science S (Solar System)	Juelich Mode	
Science H (Ionosphere)	Test Observation	Station Failure	
Science N (AGN)	Maintenance Mode	Piggyback Control	

Observing Plan for IofarAN Computers

MPIfR Effelsberg LOFAR Station

2014-02-01 through 2014-02-28

For any publication based on observations with the Effelsberg LOFAR station, please use the following acknowledgment: "Based on observations made with the Effelsberg LOFAR station of the Max-Planck-Institut für Radioastronomie (MPIfR) at Effelsberg."



Normal Experiment Code Markers

0 ELM2014-000 Kuniyoshi, Horneff

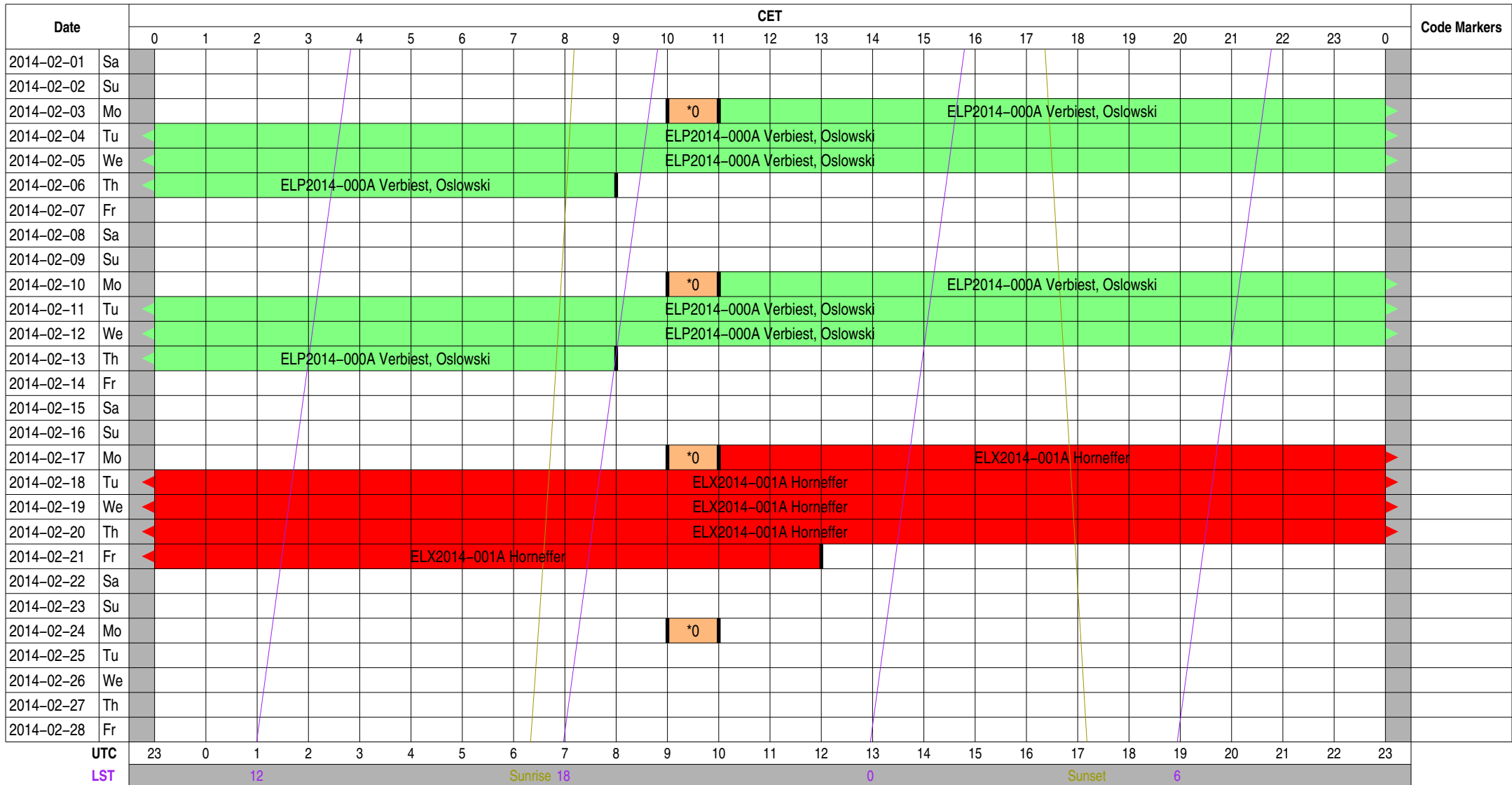
Other Code Markers

Color Meanings

Science A (Astrometry)	Science O (Other)	ILT Mode	Piggyback Without Control
Science C (Cosmology)	Science P (Pulsar)	Effelsberg Mode	Experiment Warning
Science E (Extragalactic)	Science R (Cosmic Rays)	GLOW Mode	Override Possible
Science G (Galactic)	Science S (Solar System)	Juelich Mode	
Science H (Ionosphere)	Test Observation	Station Failure	
Science N (AGN)	Maintenance Mode	Piggyback Control	

Observing Plan for IofarBN Computers MPIfR Effelsberg LOFAR Station 2014-02-01 through 2014-02-28

For any publication based on observations with the Effelsberg LOFAR station, please use the following acknowledgment: "Based on observations made with the Effelsberg LOFAR station of the Max-Planck-Institut für Radioastronomie (MPIfR) at Effelsberg."



Normal Experiment Code Markers

0 ELM2014-000 Kuniyoshi, Horneff

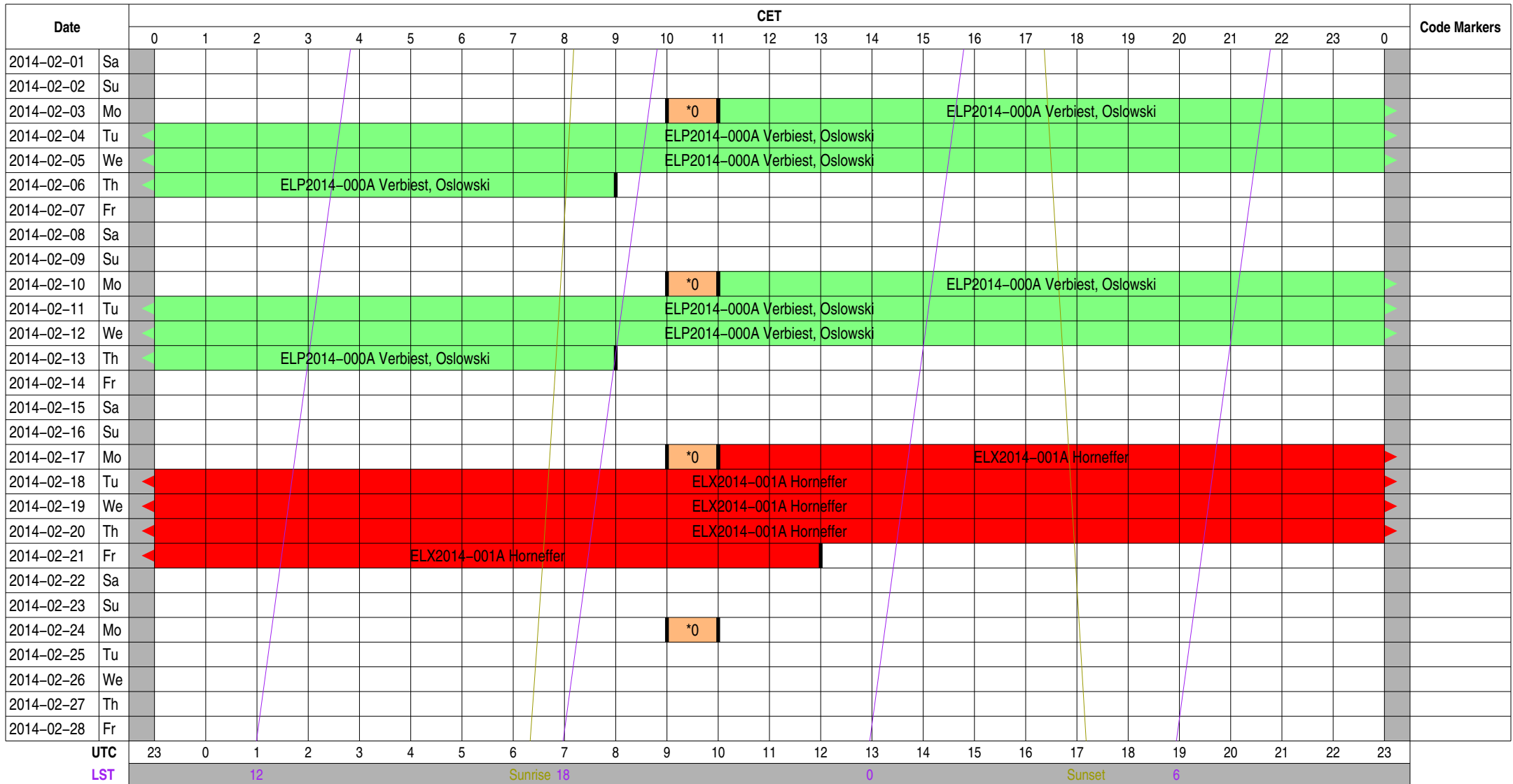
Other Code Markers

Color Meanings

Science A (Astrometry)	Science O (Other)	ILT Mode	Piggyback Without Control
Science C (Cosmology)	Science P (Pulsar)	Effelsberg Mode	Experiment Warning
Science E (Extragalactic)	Science R (Cosmic Rays)	GLOW Mode	Override Possible
Science G (Galactic)	Science S (Solar System)	Juelich Mode	
Science H (Ionosphere)	Test Observation	Station Failure	
Science N (AGN)	Maintenance Mode	Piggyback Control	

Observing Plan for Iofarx Computer MPIfR Effelsberg LOFAR Station 2014-02-01 through 2014-02-28

For any publication based on observations with the Effelsberg LOFAR station, please use the following acknowledgment: "Based on observations made with the Effelsberg LOFAR station of the Max-Planck-Institut für Radioastronomie (MPIfR) at Effelsberg."



Normal Experiment Code Markers

0 ELM2014-000 Kuniyoshi, Horneff

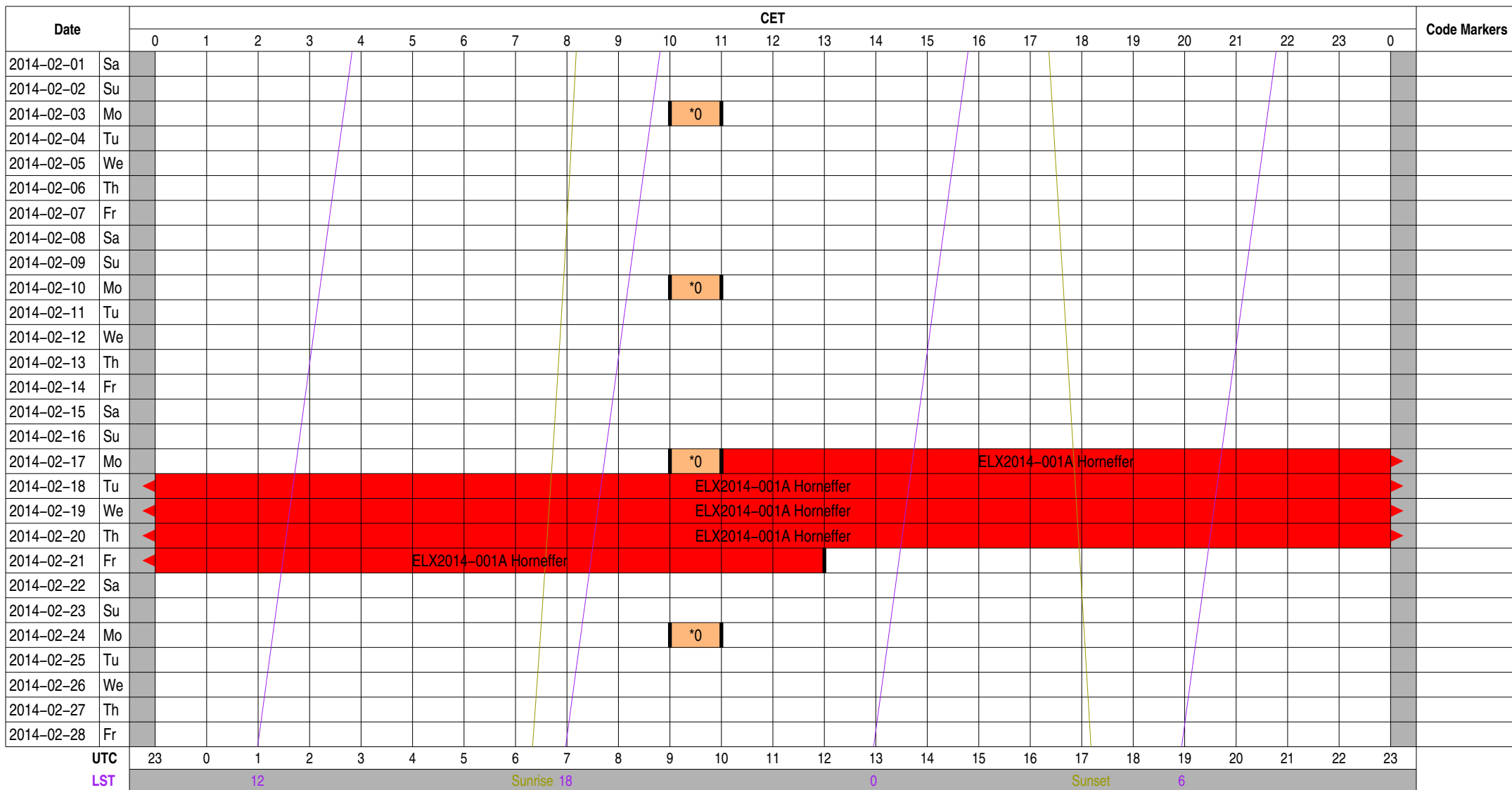
Other Code Markers

Color Meanings

Science A (Astrometry)	Science O (Other)	ILT Mode	Piggyback Without Control
Science C (Cosmology)	Science P (Pulsar)	Effelsberg Mode	Experiment Warning
Science E (Extragalactic)	Science R (Cosmic Rays)	GLOW Mode	Override Possible
Science G (Galactic)	Science S (Solar System)	Juelich Mode	
Science H (Ionosphere)	Test Observation	Station Failure	
Science N (AGN)	Maintenance Mode	Piggyback Control	

Observing Plan for Iofarsrv Computer MPIfR Effelsberg LOFAR Station 2014-02-01 through 2014-02-28

For any publication based on observations with the Effelsberg LOFAR station, please use the following acknowledgment: "Based on observations made with the Effelsberg LOFAR station of the Max-Planck-Institut für Radioastronomie (MPIfR) at Effelsberg."



Normal Experiment Code Markers

0 ELM2014-000 Kuniyoshi, Horneff

Other Code Markers

Color Meanings

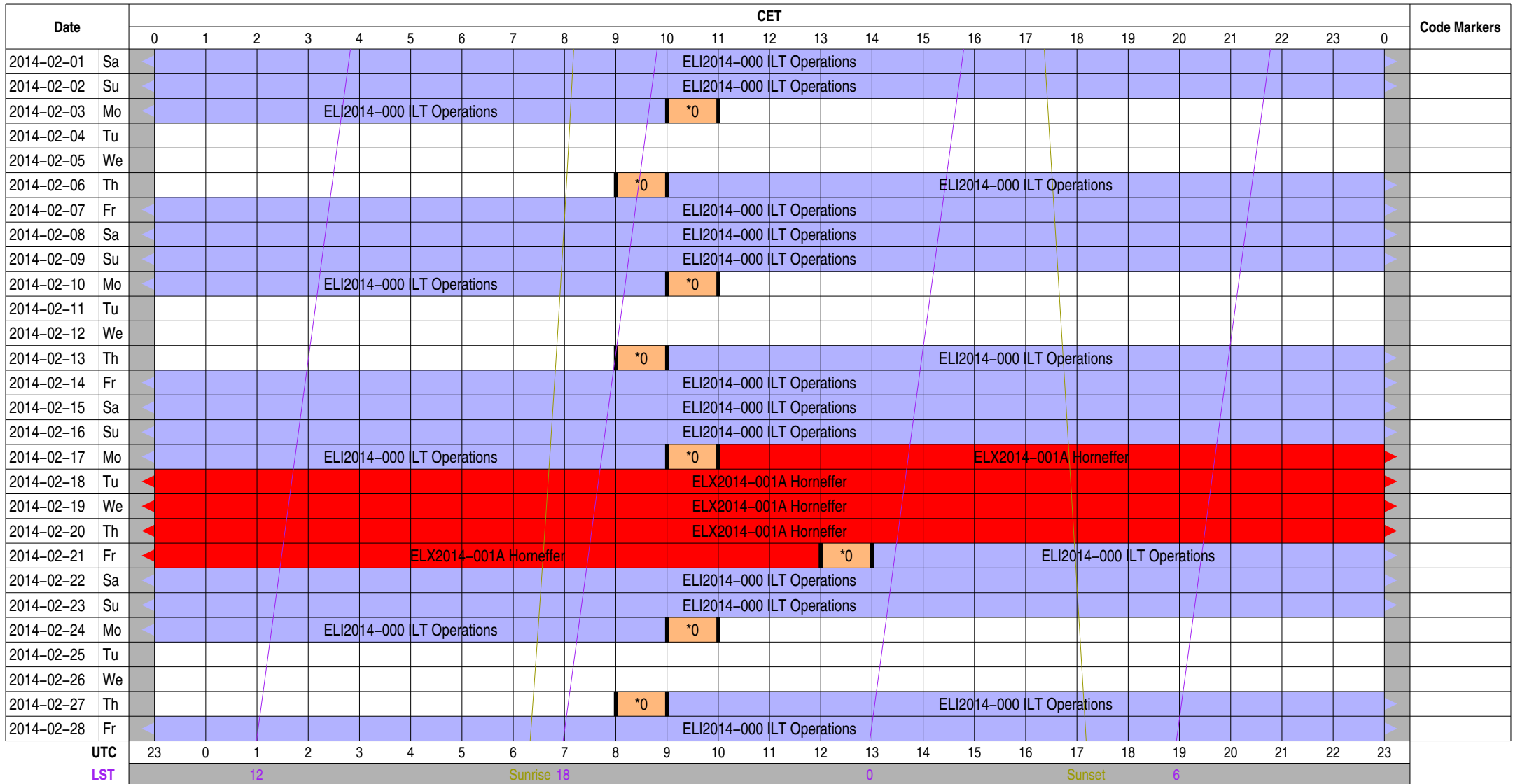
- Science A (Astrometry)
- Science C (Cosmology)
- Science E (Extragalactic)
- Science G (Galactic)
- Science H (Ionosphere)
- Science N (AGN)
- Science O (Other)
- Science P (Pulsar)
- Science R (Cosmic Rays)
- Science S (Solar System)
- Test Observation
- Maintenance Mode
- ILT Mode
- Effelsberg Mode
- GLOW Mode
- Juelich Mode
- Station Failure
- Piggyback Control
- Piggyback Without Control
- Experiment Warning
- Override Possible

Observing Plan for LOFAR Fiber Connection

MPIfR Effelsberg LOFAR Station

2014-02-01 through 2014-02-28

For any publication based on observations with the Effelsberg LOFAR station, please use the following acknowledgment: "Based on observations made with the Effelsberg LOFAR station of the Max-Planck-Institut für Radioastronomie (MPIfR) at Effelsberg."



Normal Experiment Code Markers

0 ELM2014-000 Kuniyoshi, Horneff

Other Code Markers

Color Meanings

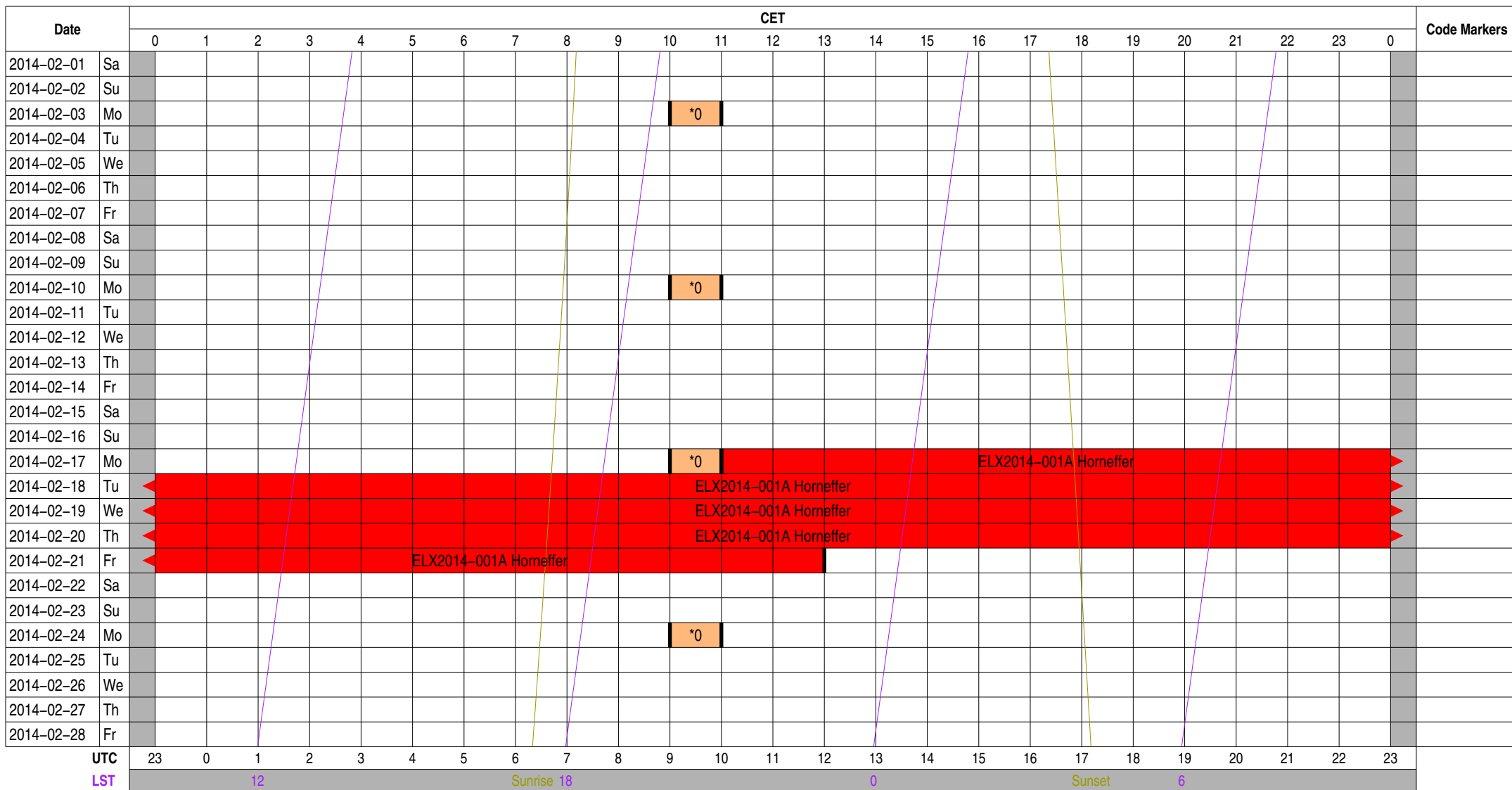
Science A (Astrometry)	Science O (Other)	ILT Mode	Piggyback Without Control
Science C (Cosmology)	Science P (Pulsar)	Effelsberg Mode	Experiment Warning
Science E (Extragalactic)	Science R (Cosmic Rays)	GLOW Mode	Override Possible
Science G (Galactic)	Science S (Solar System)	Juelich Mode	
Science H (Ionosphere)	Test Observation	Station Failure	
Science N (AGN)	Maintenance Mode	Piggyback Control	

Observing Plan for LOFAR Bonn--EF Fiber Connection

MPIfR Effelsberg LOFAR Station

2014-02-01 through 2014-02-28

For any publication based on observations with the Effelsberg LOFAR station, please use the following acknowledgment: "Based on observations made with the Effelsberg LOFAR station of the Max-Planck-Institut für Radioastronomie (MPIfR) at Effelsberg."



Normal Experiment Code Markers

0 ELM2014-000 Kuniyoshi, Horneff

Other Code Markers

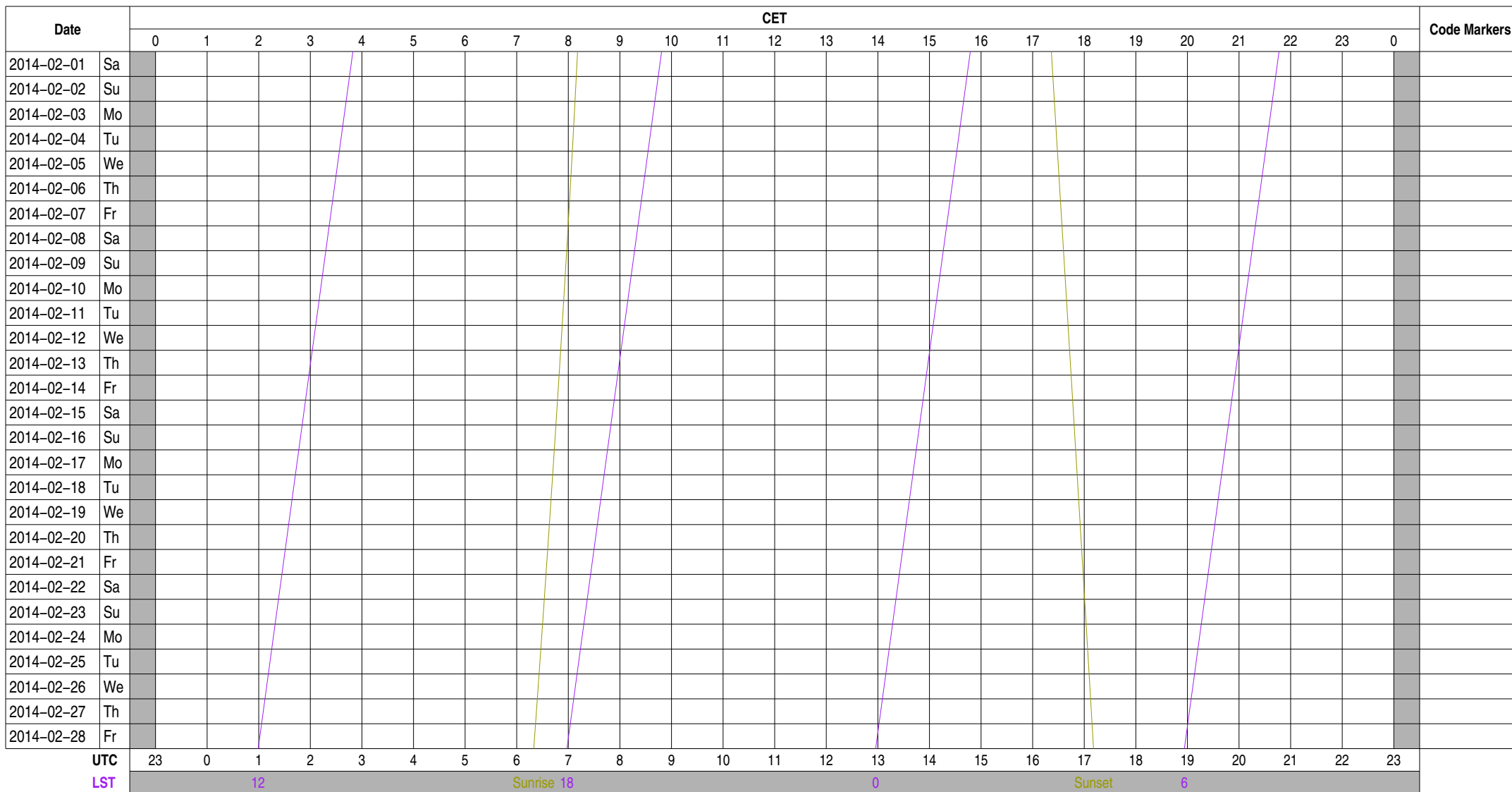
Color Meanings

Science A (Astrometry)	Science O (Other)	ILT Mode	Piggyback Without Control
Science C (Cosmology)	Science P (Pulsar)	Effelsberg Mode	Experiment Warning
Science E (Extragalactic)	Science R (Cosmic Rays)	GLOW Mode	Override Possible
Science G (Galactic)	Science S (Solar System)	Juelich Mode	
Science H (Ionosphere)	Test Observation	Station Failure	
Science N (AGN)	Maintenance Mode	Piggyback Control	

Observing Plan for Operator On-Duty

MPIfR Effelsberg LOFAR Station

2014-02-01 through 2014-02-28



Normal Experiment Code Markers

Other Code Markers

Color Meanings

- 100 m Operator
- Anderson
- Kuniyoshi
- Horneffer
- Other
- Unknown

Experiment Information for Normal Observations

ELI2014-000	ILT Operations	observer@astron.nl	+31 521 595 777	Main ILT Observations, ILT Operations only on-duty 9--17, M
ELI2014-000	ILT Operations	observer@astron.nl	+31 521 595 777	Main ILT Observations, ILT Operations only on-duty 9--17, M
ELI2014-000	ILT Operations	observer@astron.nl	+31 521 595 777	Main ILT Observations, ILT Operations only on-duty 9--17, M
ELI2014-000	ILT Operations	observer@astron.nl	+31 521 595 777	Main ILT Observations, ILT Operations only on-duty 9--17, M
ELI2014-000	ILT Operations	observer@astron.nl	+31 521 595 777	Main ILT Observations, ILT Operations only on-duty 9--17, M
ELM2014-000	Kuniyoshi, Horneffer, Adebahr	lofar-ops@mpi-fr-bonn.mpg.de	+49 228 525 505	Handover operations for local to ILT mode (MPIFR time)
ELM2014-000	Kuniyoshi, Horneffer, Adebahr	lofar-ops@mpi-fr-bonn.mpg.de	+49 228 525 505	Handover operations for local to ILT mode (MPIFR time)
ELM2014-000	Kuniyoshi, Horneffer, Adebahr	lofar-ops@mpi-fr-bonn.mpg.de	+49 228 525 505	Handover operations for local to ILT mode (MPIFR time)
ELM2014-000	Kuniyoshi, Horneffer, Adebahr	lofar-ops@mpi-fr-bonn.mpg.de	+49 228 525 505	Handover operations for local to ILT mode (MPIFR time)
ELM2014-000	Kuniyoshi, Horneffer, Adebahr	lofar-ops@mpi-fr-bonn.mpg.de	+49 228 525 505	Handover operations for local to ILT mode (MPIFR time)
ELM2014-000	Kuniyoshi, Horneffer, Adebahr	lofar-ops@mpi-fr-bonn.mpg.de	+49 228 525 505	Handover operations for local to ILT mode (MPIFR time)
ELM2014-000	Kuniyoshi, Horneffer, Adebahr	lofar-ops@mpi-fr-bonn.mpg.de	+49 228 525 505	Handover operations for local to ILT mode (MPIFR time)
ELM2014-000	Kuniyoshi, Horneffer, Adebahr	lofar-ops@mpi-fr-bonn.mpg.de	+49 228 525 505	Handover operations for local to ILT mode (MPIFR time)
ELP2014-000	Verbiest, Osłowski	joris.verbiest@gmail.com	+49 521 106 3184	Generig Long Term Pulsar Monitoring
ELP2014-000 A	Verbiest, Osłowski	joris.verbiest@gmail.com	+49 521 106 3184	Generig Long Term Pulsar Monitoring
ELP2014-000 A	Verbiest, Osłowski	joris.verbiest@gmail.com	+49 521 106 3184	Generig Long Term Pulsar Monitoring
ELX2014-001	Horneffer	horneff@mpi-fr-bonn.mpg.de	+49 228 525 505	failed TDS board
ELX2014-001 A	Horneffer	horneff@mpi-fr-bonn.mpg.de	+49 228 525 505	failed TDS board

Experiment Information for Other Actions

Experiment Information for Operator On-Duty Schedule

Time Usage [hours] for Other Actions

Experiment Code	station	TBB	HBA	LBH	LBL	interfe	lofarAN	lofarBN	lofarx	lofarsr	fiber	BN--EF_	duty
-----------------	---------	-----	-----	-----	-----	---------	---------	---------	--------	---------	-------	---------	------

Time Usage [hours] for Operator On-Duty Schedule

Experiment Code

station

TBB

HBA

LBH

LBL

interfe

lofarAN

lofarBN

lofarx

lofarsr

fiber

BN--EF_

duty

