

Observing Plan for Station Control (LCU)

MPIfR Effelsberg LOFAR Station

2014-01-01 through 2014-01-31

For any publication based on observations with the Effelsberg LOFAR station, please use the following acknowledgment: "Based on observations made with the Effelsberg LOFAR station of the Max-Planck-Institut für Radioastronomie (MPIfR) at Effelsberg."

| Date | CET | | | | | | | | | | | | | | | | | | | | | | | | Code Markers | | |
|------------|-----|---|---|---|---|---|---|---|---|---|----|----|----|----|----|----|----|----|----|----|----|----|----|----|--------------|---|--|
| | 0 | 1 | 2 | 3 | 4 | 5 | 6 | 7 | 8 | 9 | 10 | 11 | 12 | 13 | 14 | 15 | 16 | 17 | 18 | 19 | 20 | 21 | 22 | 23 | | 0 | |
| 2014-01-01 | We | | | | | | | | | | | | | | | | | | | | | | | | | | |
| 2014-01-02 | Th | | | | | | | | | | | | | | | | | | | | | | | | | | |
| 2014-01-03 | Fr | | | | | | | | | | | | | | | | | | | | | | | | | | |
| 2014-01-04 | Sa | | | | | | | | | | | | | | | | | | | | | | | | | | |
| 2014-01-05 | Su | | | | | | | | | | | | | | | | | | | | | | | | | | |
| 2014-01-06 | Mo | | | | | | | | | | | | | | | | | | | | | | | | | | |
| 2014-01-07 | Tu | | | | | | | | | | | | | | | | | | | | | | | | | | |
| 2014-01-08 | We | | | | | | | | | | | | | | | | | | | | | | | | | | |
| 2014-01-09 | Th | | | | | | | | | | | | | | | | | | | | | | | | | | |
| 2014-01-10 | Fr | | | | | | | | | | | | | | | | | | | | | | | | | | |
| 2014-01-11 | Sa | | | | | | | | | | | | | | | | | | | | | | | | | | |
| 2014-01-12 | Su | | | | | | | | | | | | | | | | | | | | | | | | | | |
| 2014-01-13 | Mo | | | | | | | | | | | | | | | | | | | | | | | | | | |
| 2014-01-14 | Tu | | | | | | | | | | | | | | | | | | | | | | | | | | |
| 2014-01-15 | We | | | | | | | | | | | | | | | | | | | | | | | | | | |
| 2014-01-16 | Th | | | | | | | | | | | | | | | | | | | | | | | | | | |
| 2014-01-17 | Fr | | | | | | | | | | | | | | | | | | | | | | | | | | |
| 2014-01-18 | Sa | | | | | | | | | | | | | | | | | | | | | | | | | | |
| 2014-01-19 | Su | | | | | | | | | | | | | | | | | | | | | | | | | | |
| 2014-01-20 | Mo | | | | | | | | | | | | | | | | | | | | | | | | | | |
| 2014-01-21 | Tu | | | | | | | | | | | | | | | | | | | | | | | | | | |
| 2014-01-22 | We | | | | | | | | | | | | | | | | | | | | | | | | | | |
| 2014-01-23 | Th | | | | | | | | | | | | | | | | | | | | | | | | | | |
| 2014-01-24 | Fr | | | | | | | | | | | | | | | | | | | | | | | | | | |
| 2014-01-25 | Sa | | | | | | | | | | | | | | | | | | | | | | | | | | |
| 2014-01-26 | Su | | | | | | | | | | | | | | | | | | | | | | | | | | |
| 2014-01-27 | Mo | | | | | | | | | | | | | | | | | | | | | | | | | | |
| 2014-01-28 | Tu | | | | | | | | | | | | | | | | | | | | | | | | | | |
| 2014-01-29 | We | | | | | | | | | | | | | | | | | | | | | | | | | | |
| 2014-01-30 | Th | | | | | | | | | | | | | | | | | | | | | | | | | | |
| 2014-01-31 | Fr | | | | | | | | | | | | | | | | | | | | | | | | | | |

| UTC | 23 | 0 | 1 | 2 | 3 | 4 | 5 | 6 | 7 | 8 | 9 | 10 | 11 | 12 | 13 | 14 | 15 | 16 | 17 | 18 | 19 | 20 | 21 | 22 | 23 |
|-----|----|---|---|---|----|---|---|---|---|---|----|----|----|----|----|----|----|----|----|--------|----|----|----|----|----|
| LST | | | | | 12 | | | | | | 18 | | | | | | | 0 | | Sunset | | | | | 6 |

Normal Experiment Code Markers

0 ELM2014-000 Kuniyoshi, Horneff

Other Code Markers

Color Meanings

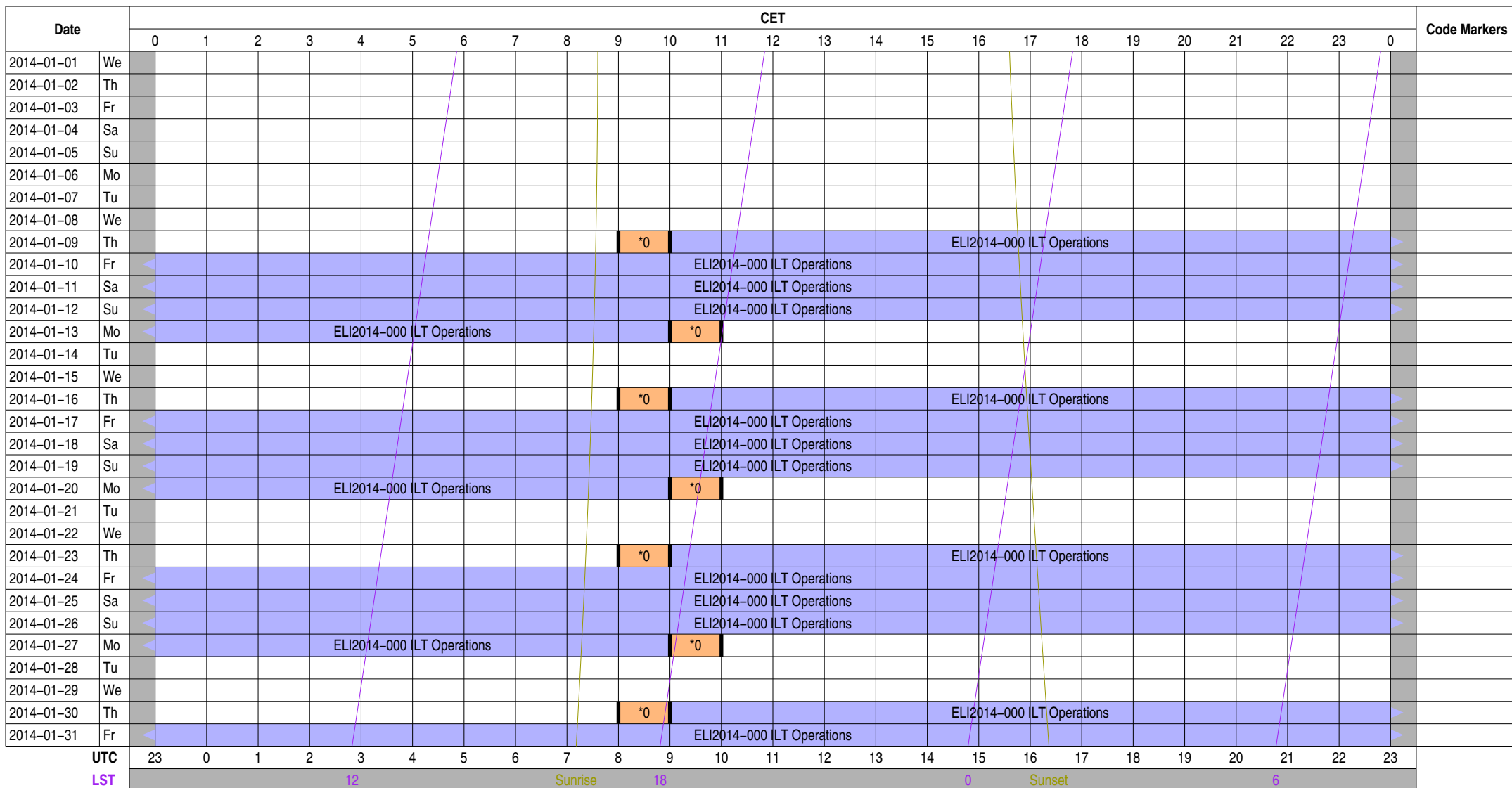
| | | | |
|---------------------------|--------------------------|-------------------|---------------------------|
| Science A (Astrometry) | Science O (Other) | ILT Mode | Piggyback Without Control |
| Science C (Cosmology) | Science P (Pulsar) | Effelsberg Mode | Experiment Warning |
| Science E (Extragalactic) | Science R (Cosmic Rays) | GLOW Mode | Override Possible |
| Science G (Galactic) | Science S (Solar System) | Juelich Mode | |
| Science H (Ionosphere) | Test Observation | Station Failure | |
| Science N (AGN) | Maintenance Mode | Piggyback Control | |

Observing Plan for Transient Buffer Boards

MPIfR Effelsberg LOFAR Station

2014-01-01 through 2014-01-31

For any publication based on observations with the Effelsberg LOFAR station, please use the following acknowledgment: "Based on observations made with the Effelsberg LOFAR station of the Max-Planck-Institut für Radioastronomie (MPIfR) at Effelsberg."



Normal Experiment Code Markers

0 ELM2014-000 Kuniyoshi, Horneff

Other Code Markers

Color Meanings

| | | | |
|---------------------------|--------------------------|-------------------|---------------------------|
| Science A (Astrometry) | Science O (Other) | ILT Mode | Piggyback Without Control |
| Science C (Cosmology) | Science P (Pulsar) | Effelsberg Mode | Experiment Warning |
| Science E (Extragalactic) | Science R (Cosmic Rays) | GLOW Mode | Override Possible |
| Science G (Galactic) | Science S (Solar System) | Juelich Mode | |
| Science H (Ionosphere) | Test Observation | Station Failure | |
| Science N (AGN) | Maintenance Mode | Piggyback Control | |

Observing Plan for HBA MPIfR Effelsberg LOFAR Station 2014-01-01 through 2014-01-31

For any publication based on observations with the Effelsberg LOFAR station, please use the following acknowledgment: "Based on observations made with the Effelsberg LOFAR station of the Max-Planck-Institut für Radioastronomie (MPIfR) at Effelsberg."

| Date | CET | | | | | | | | | | | | | | | | | | | | | | | | Code Markers | | |
|------------|-----|---|---|---|---|---|---|---|---|---|----|----|----|----|----|----|----|----|----|----|----|----|----|----|--------------|---|--|
| | 0 | 1 | 2 | 3 | 4 | 5 | 6 | 7 | 8 | 9 | 10 | 11 | 12 | 13 | 14 | 15 | 16 | 17 | 18 | 19 | 20 | 21 | 22 | 23 | | 0 | |
| 2014-01-01 | We | | | | | | | | | | | | | | | | | | | | | | | | | | |
| 2014-01-02 | Th | | | | | | | | | | | | | | | | | | | | | | | | | | |
| 2014-01-03 | Fr | | | | | | | | | | | | | | | | | | | | | | | | | | |
| 2014-01-04 | Sa | | | | | | | | | | | | | | | | | | | | | | | | | | |
| 2014-01-05 | Su | | | | | | | | | | | | | | | | | | | | | | | | | | |
| 2014-01-06 | Mo | | | | | | | | | | | | | | | | | | | | | | | | | | |
| 2014-01-07 | Tu | | | | | | | | | | | | | | | | | | | | | | | | | | |
| 2014-01-08 | We | | | | | | | | | | | | | | | | | | | | | | | | | | |
| 2014-01-09 | Th | | | | | | | | | | | | | | | | | | | | | | | | | | |
| 2014-01-10 | Fr | | | | | | | | | | | | | | | | | | | | | | | | | | |
| 2014-01-11 | Sa | | | | | | | | | | | | | | | | | | | | | | | | | | |
| 2014-01-12 | Su | | | | | | | | | | | | | | | | | | | | | | | | | | |
| 2014-01-13 | Mo | | | | | | | | | | | | | | | | | | | | | | | | | | |
| 2014-01-14 | Tu | | | | | | | | | | | | | | | | | | | | | | | | | | |
| 2014-01-15 | We | | | | | | | | | | | | | | | | | | | | | | | | | | |
| 2014-01-16 | Th | | | | | | | | | | | | | | | | | | | | | | | | | | |
| 2014-01-17 | Fr | | | | | | | | | | | | | | | | | | | | | | | | | | |
| 2014-01-18 | Sa | | | | | | | | | | | | | | | | | | | | | | | | | | |
| 2014-01-19 | Su | | | | | | | | | | | | | | | | | | | | | | | | | | |
| 2014-01-20 | Mo | | | | | | | | | | | | | | | | | | | | | | | | | | |
| 2014-01-21 | Tu | | | | | | | | | | | | | | | | | | | | | | | | | | |
| 2014-01-22 | We | | | | | | | | | | | | | | | | | | | | | | | | | | |
| 2014-01-23 | Th | | | | | | | | | | | | | | | | | | | | | | | | | | |
| 2014-01-24 | Fr | | | | | | | | | | | | | | | | | | | | | | | | | | |
| 2014-01-25 | Sa | | | | | | | | | | | | | | | | | | | | | | | | | | |
| 2014-01-26 | Su | | | | | | | | | | | | | | | | | | | | | | | | | | |
| 2014-01-27 | Mo | | | | | | | | | | | | | | | | | | | | | | | | | | |
| 2014-01-28 | Tu | | | | | | | | | | | | | | | | | | | | | | | | | | |
| 2014-01-29 | We | | | | | | | | | | | | | | | | | | | | | | | | | | |
| 2014-01-30 | Th | | | | | | | | | | | | | | | | | | | | | | | | | | |
| 2014-01-31 | Fr | | | | | | | | | | | | | | | | | | | | | | | | | | |

| | | | | | | | | | | | | | | | | | | | | | | | | | |
|------------|----|---|---|----|---|---|---|---|---------|---|----|----|----|----|----|----|----|--------|----|----|----|----|----|----|----|
| UTC | 23 | 0 | 1 | 2 | 3 | 4 | 5 | 6 | 7 | 8 | 9 | 10 | 11 | 12 | 13 | 14 | 15 | 16 | 17 | 18 | 19 | 20 | 21 | 22 | 23 |
| LST | | | | 12 | | | | | Sunrise | | 18 | | | | | | 0 | Sunset | | | | | 6 | | |

Normal Experiment Code Markers

0 ELM2014-000 Kuniyoshi, Horneff

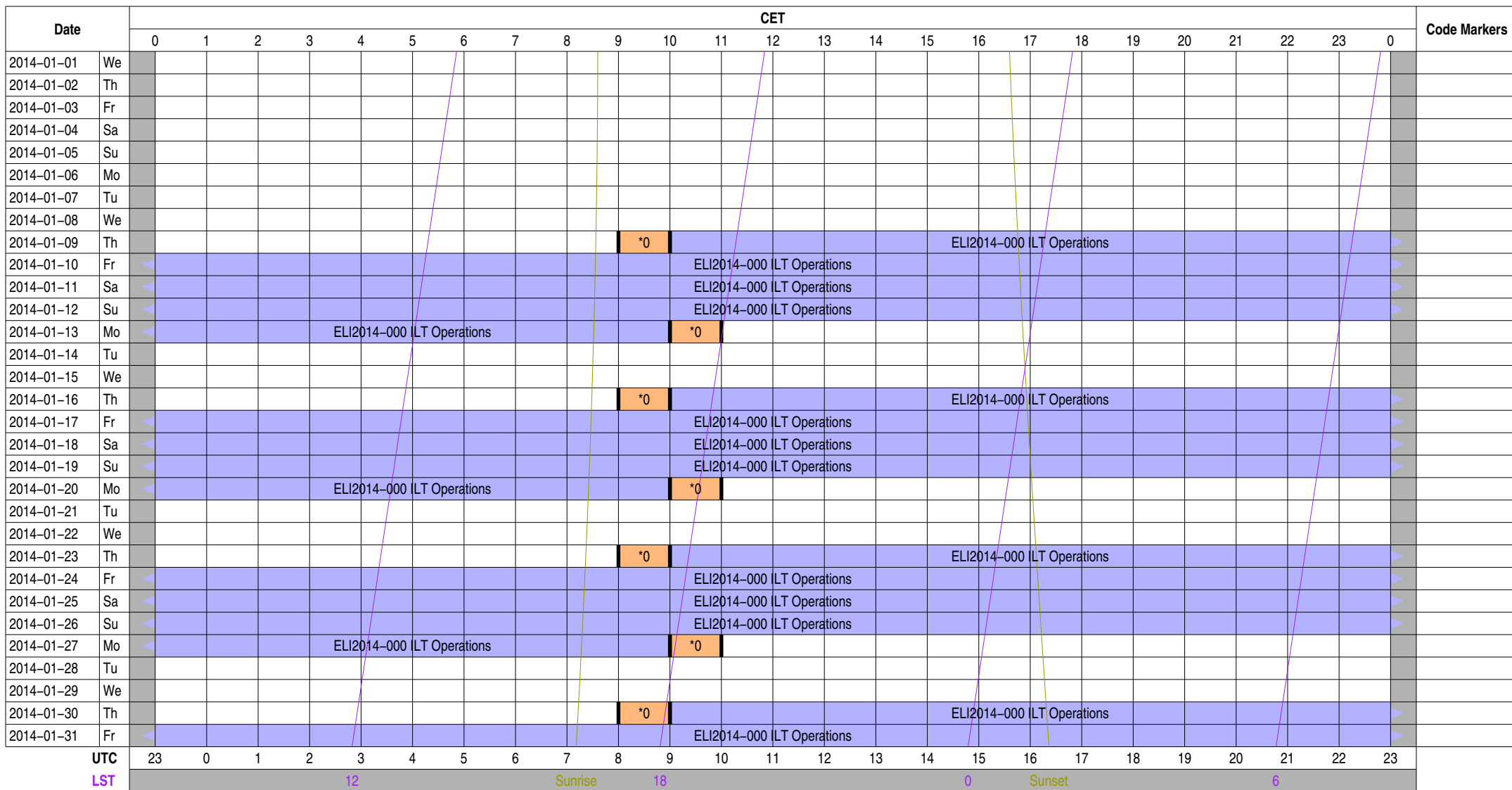
Other Code Markers

Color Meanings

| | | | |
|---------------------------|--------------------------|-------------------|---------------------------|
| Science A (Astrometry) | Science O (Other) | ILT Mode | Piggyback Without Control |
| Science C (Cosmology) | Science P (Pulsar) | Effelsberg Mode | Experiment Warning |
| Science E (Extragalactic) | Science R (Cosmic Rays) | GLOW Mode | Override Possible |
| Science G (Galactic) | Science S (Solar System) | Juelich Mode | |
| Science H (Ionosphere) | Test Observation | Station Failure | |
| Science N (AGN) | Maintenance Mode | Piggyback Control | |

Observing Plan for Low Band High (LBA) MPIfR Effelsberg LOFAR Station 2014-01-01 through 2014-01-31

For any publication based on observations with the Effelsberg LOFAR station, please use the following acknowledgment: "Based on observations made with the Effelsberg LOFAR station of the Max-Planck-Institut für Radioastronomie (MPIfR) at Effelsberg."



Normal Experiment Code Markers

0 ELM2014-000 Kuniyoshi, Horneff

Other Code Markers

Color Meanings

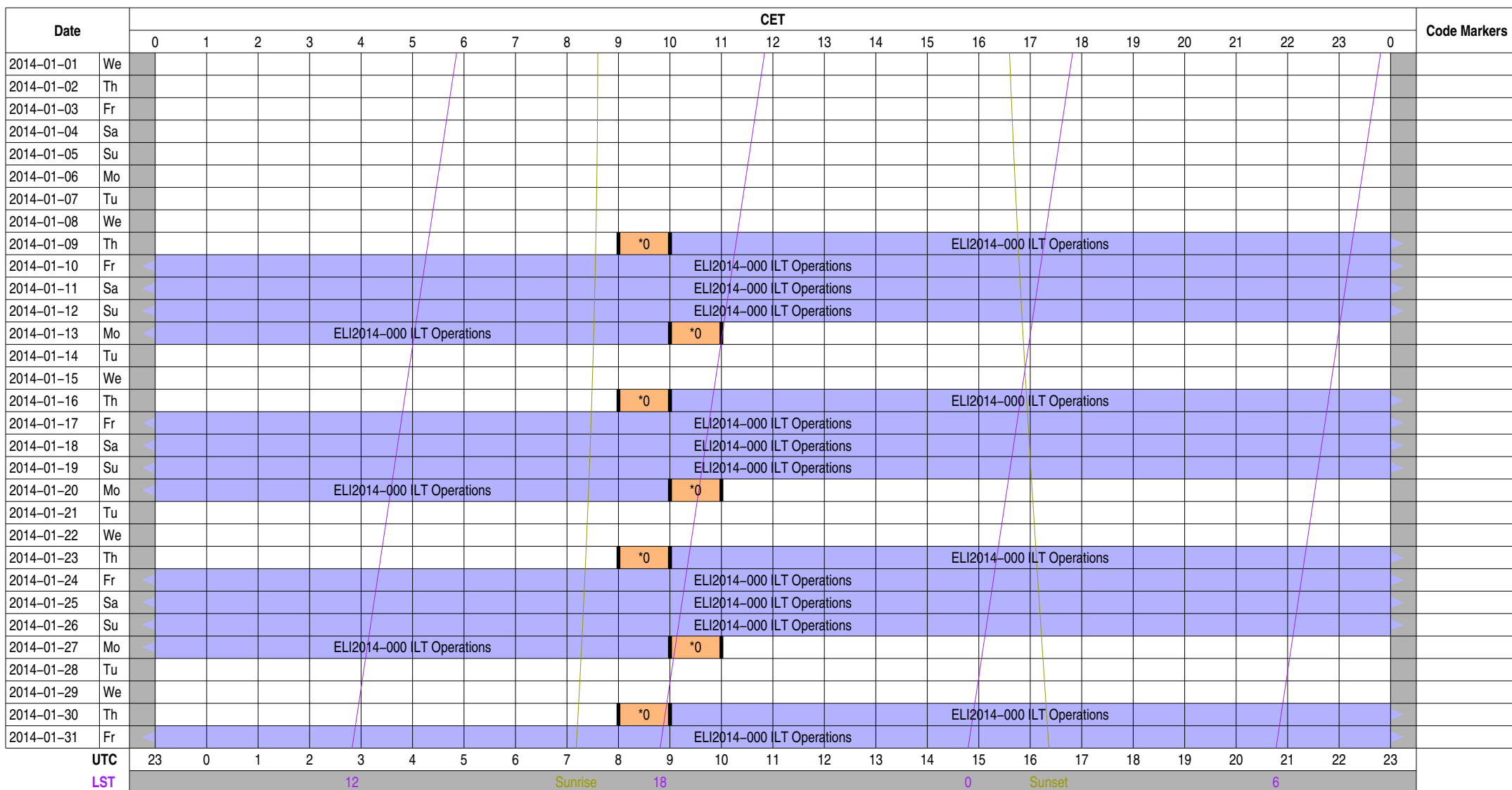
| | | | |
|---------------------------|--------------------------|-------------------|---------------------------|
| Science A (Astrometry) | Science O (Other) | ILT Mode | Piggyback Without Control |
| Science C (Cosmology) | Science P (Pulsar) | Effelsberg Mode | Experiment Warning |
| Science E (Extragalactic) | Science R (Cosmic Rays) | GLOW Mode | Override Possible |
| Science G (Galactic) | Science S (Solar System) | Juelich Mode | |
| Science H (Ionosphere) | Test Observation | Station Failure | |
| Science N (AGN) | Maintenance Mode | Piggyback Control | |

Observing Plan for Low Band Low, Unused Inputs

MPIfR Effelsberg LOFAR Station

2014-01-01 through 2014-01-31

For any publication based on observations with the Effelsberg LOFAR station, please use the following acknowledgment: "Based on observations made with the Effelsberg LOFAR station of the Max-Planck-Institut für Radioastronomie (MPIfR) at Effelsberg."



Normal Experiment Code Markers

0 ELM2014-000 Kuniyoshi, Horneff

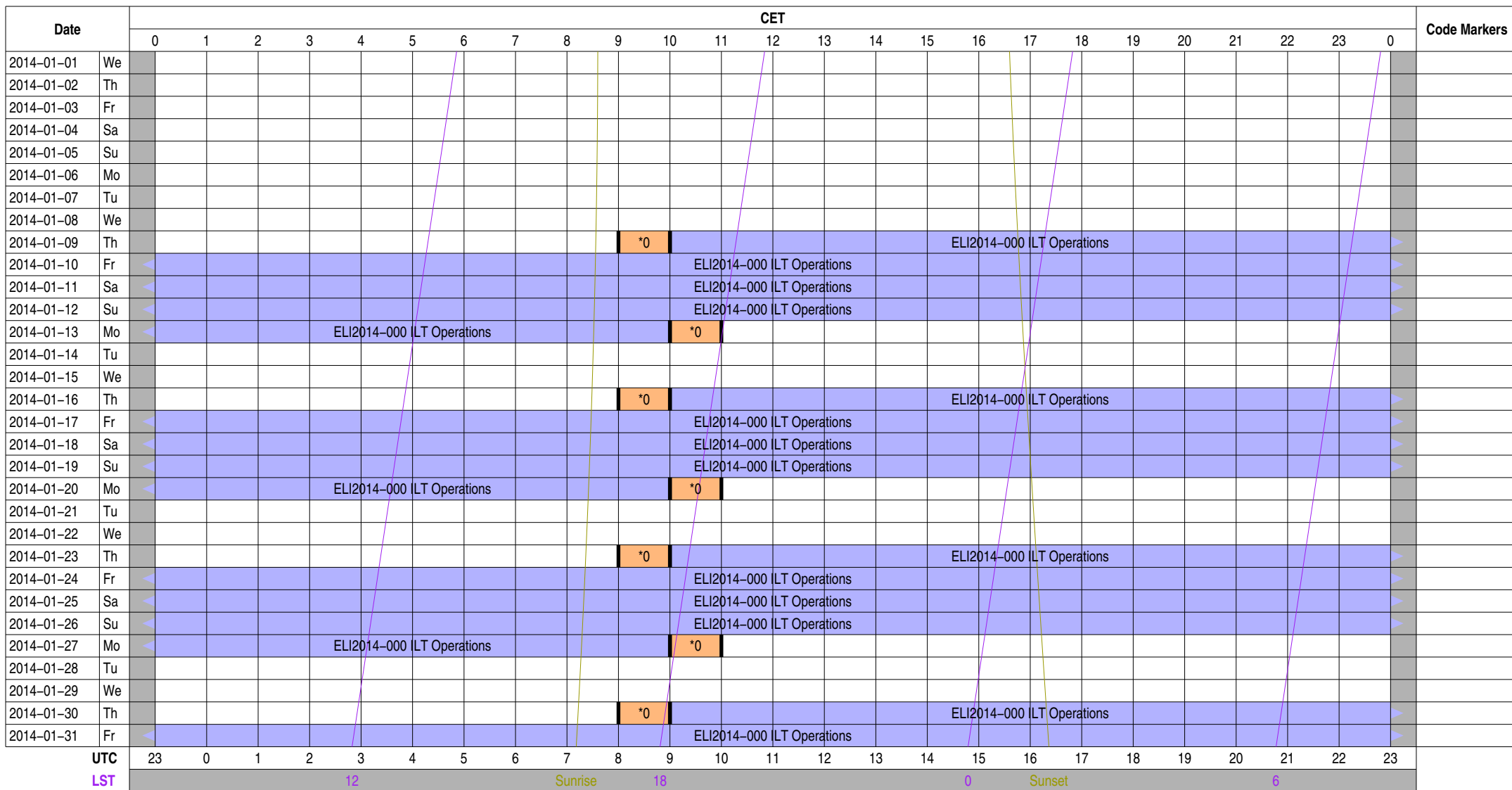
Other Code Markers

Color Meanings

| | | | |
|---------------------------|--------------------------|-------------------|---------------------------|
| Science A (Astrometry) | Science O (Other) | ILT Mode | Piggyback Without Control |
| Science C (Cosmology) | Science P (Pulsar) | Effelsberg Mode | Experiment Warning |
| Science E (Extragalactic) | Science R (Cosmic Rays) | GLOW Mode | Override Possible |
| Science G (Galactic) | Science S (Solar System) | Juelich Mode | |
| Science H (Ionosphere) | Test Observation | Station Failure | |
| Science N (AGN) | Maintenance Mode | Piggyback Control | |

Observing Plan for Station Interferometer MPIfR Effelsberg LOFAR Station 2014-01-01 through 2014-01-31

For any publication based on observations with the Effelsberg LOFAR station, please use the following acknowledgment: "Based on observations made with the Effelsberg LOFAR station of the Max-Planck-Institut für Radioastronomie (MPIfR) at Effelsberg."



Normal Experiment Code Markers

0 ELM2014-000 Kuniyoshi, Horneff

Other Code Markers

Color Meanings

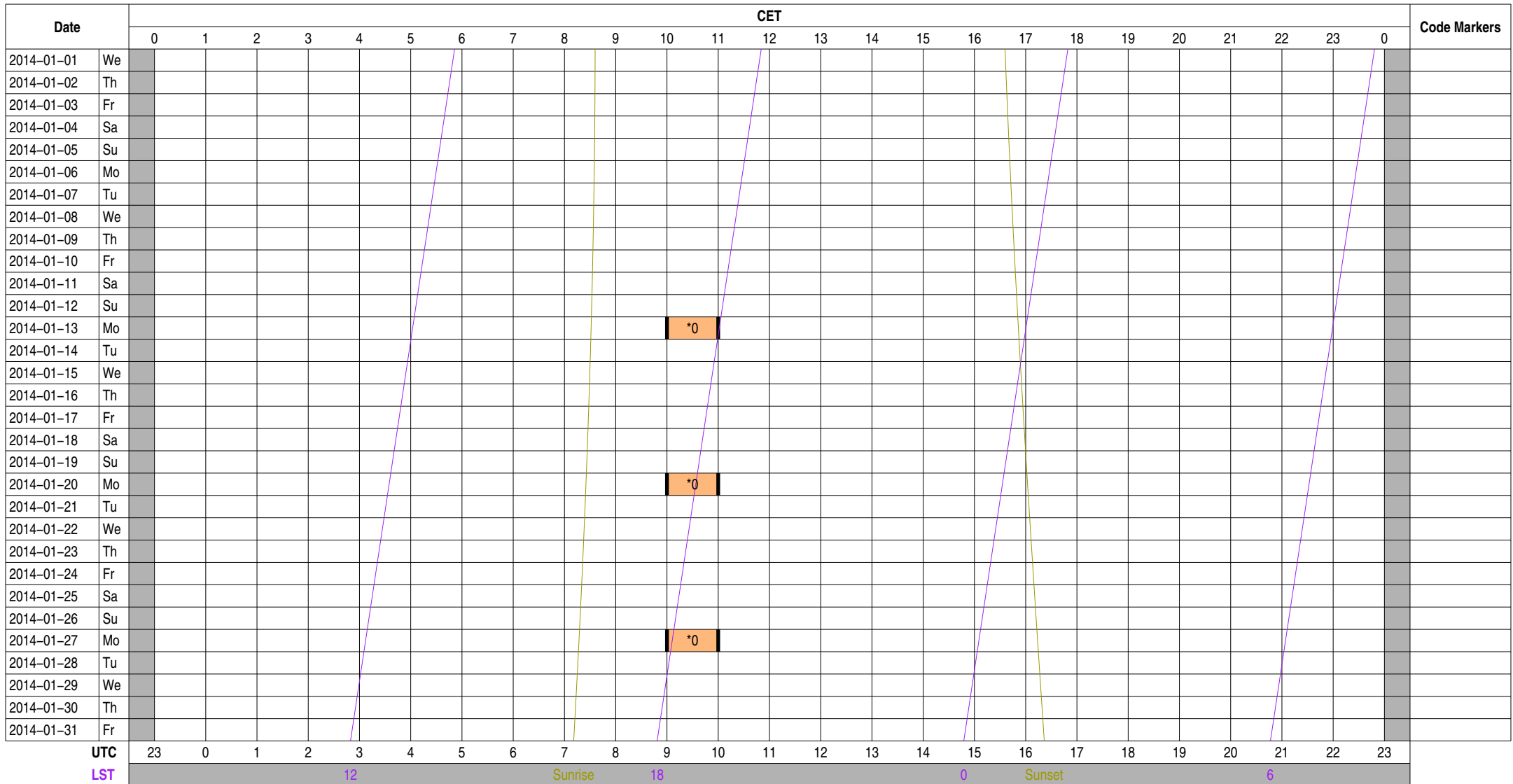
| | | | |
|---------------------------|--------------------------|-------------------|---------------------------|
| Science A (Astrometry) | Science O (Other) | ILT Mode | Piggyback Without Control |
| Science C (Cosmology) | Science P (Pulsar) | Effelsberg Mode | Experiment Warning |
| Science E (Extragalactic) | Science R (Cosmic Rays) | GLOW Mode | Override Possible |
| Science G (Galactic) | Science S (Solar System) | Juelich Mode | |
| Science H (Ionosphere) | Test Observation | Station Failure | |
| Science N (AGN) | Maintenance Mode | Piggyback Control | |

Observing Plan for IofarAN Computers

MPIfR Effelsberg LOFAR Station

2014-01-01 through 2014-01-31

For any publication based on observations with the Effelsberg LOFAR station, please use the following acknowledgment: "Based on observations made with the Effelsberg LOFAR station of the Max-Planck-Institut für Radioastronomie (MPIfR) at Effelsberg."



Normal Experiment Code Markers

0 ELM2014-000 Kuniyoshi, Horneff

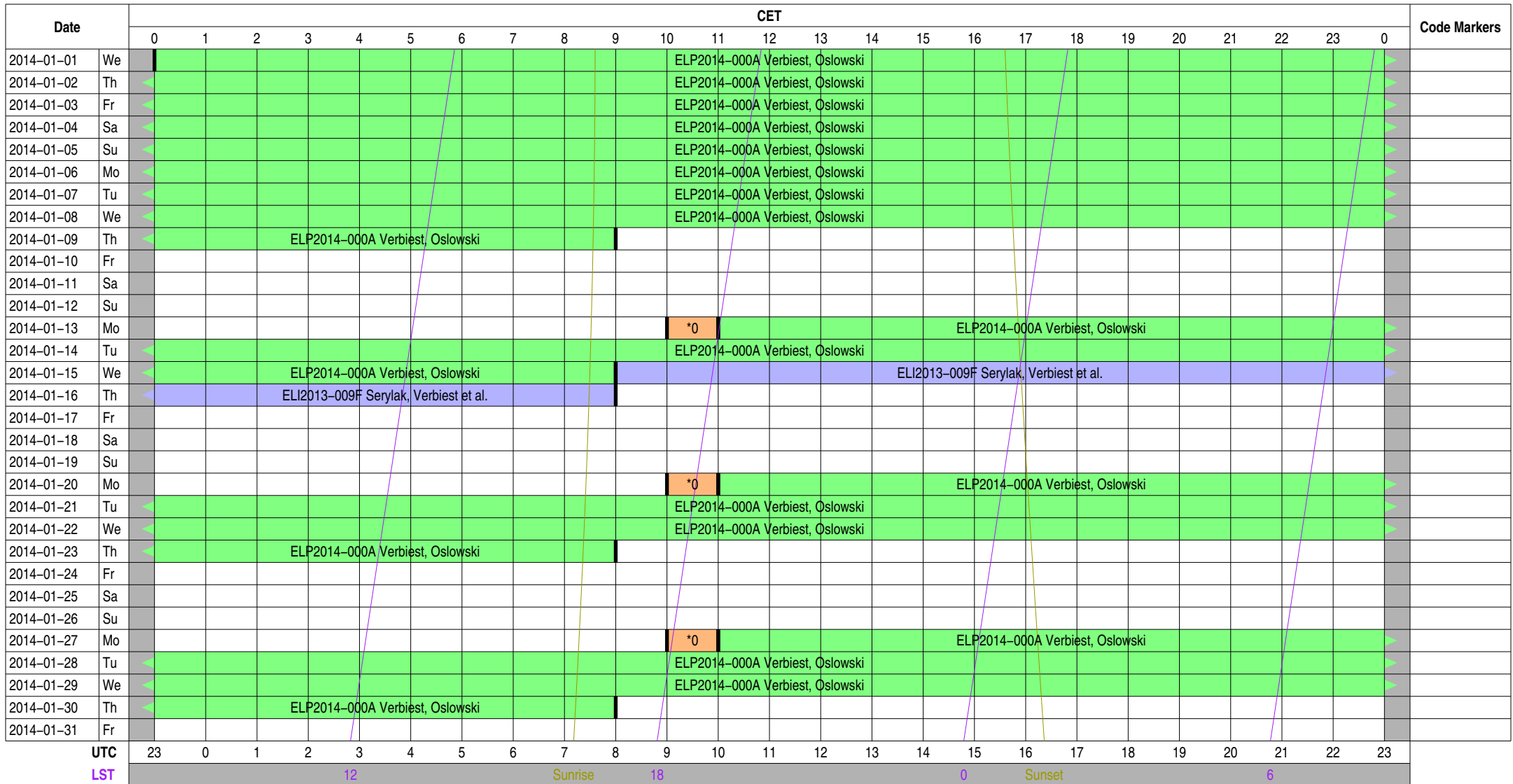
Other Code Markers

Color Meanings

| | | | |
|---------------------------|--------------------------|-------------------|---------------------------|
| Science A (Astrometry) | Science O (Other) | ILT Mode | Piggyback Without Control |
| Science C (Cosmology) | Science P (Pulsar) | Effelsberg Mode | Experiment Warning |
| Science E (Extragalactic) | Science R (Cosmic Rays) | GLOW Mode | Override Possible |
| Science G (Galactic) | Science S (Solar System) | Juelich Mode | |
| Science H (Ionosphere) | Test Observation | Station Failure | |
| Science N (AGN) | Maintenance Mode | Piggyback Control | |

Observing Plan for IofarBN Computers MPIfR Effelsberg LOFAR Station 2014-01-01 through 2014-01-31

For any publication based on observations with the Effelsberg LOFAR station, please use the following acknowledgment: "Based on observations made with the Effelsberg LOFAR station of the Max-Planck-Institut für Radioastronomie (MPIfR) at Effelsberg."



Normal Experiment Code Markers

0 ELM2014-000 Kuniyoshi, Horneff

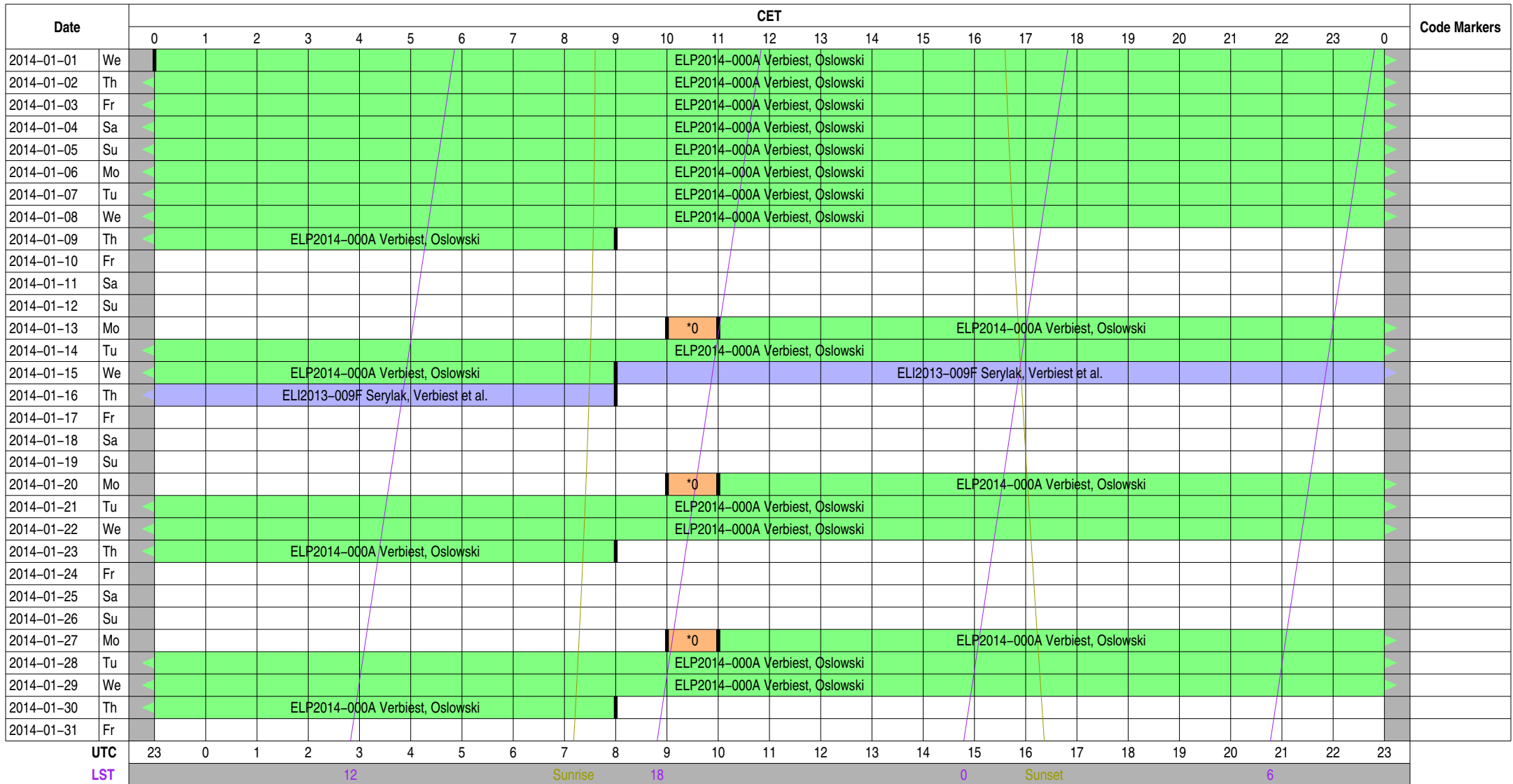
Other Code Markers

Color Meanings

| | | | |
|---------------------------|--------------------------|-------------------|---------------------------|
| Science A (Astrometry) | Science O (Other) | ILT Mode | Piggyback Without Control |
| Science C (Cosmology) | Science P (Pulsar) | Effelsberg Mode | Experiment Warning |
| Science E (Extragalactic) | Science R (Cosmic Rays) | GLOW Mode | Override Possible |
| Science G (Galactic) | Science S (Solar System) | Juelich Mode | |
| Science H (Ionosphere) | Test Observation | Station Failure | |
| Science N (AGN) | Maintenance Mode | Piggyback Control | |

Observing Plan for Iofarx Computer MPIfR Effelsberg LOFAR Station 2014-01-01 through 2014-01-31

For any publication based on observations with the Effelsberg LOFAR station, please use the following acknowledgment: "Based on observations made with the Effelsberg LOFAR station of the Max-Planck-Institut für Radioastronomie (MPIfR) at Effelsberg."



Normal Experiment Code Markers

0 ELM2014-000 Kuniyoshi, Horneff

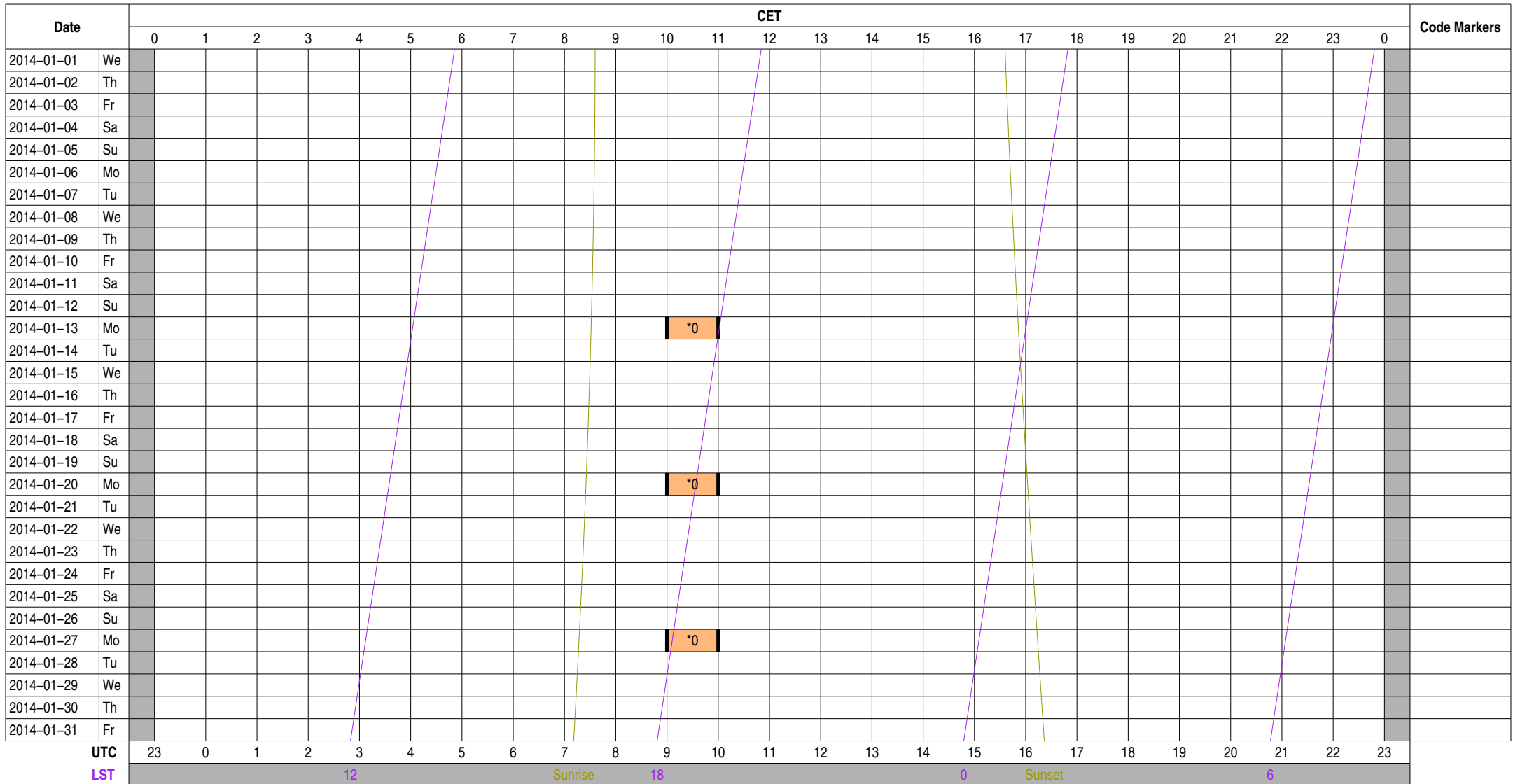
Other Code Markers

Color Meanings

| | | | |
|---------------------------|--------------------------|-------------------|---------------------------|
| Science A (Astrometry) | Science O (Other) | ILT Mode | Piggyback Without Control |
| Science C (Cosmology) | Science P (Pulsar) | Effelsberg Mode | Experiment Warning |
| Science E (Extragalactic) | Science R (Cosmic Rays) | GLOW Mode | Override Possible |
| Science G (Galactic) | Science S (Solar System) | Juelich Mode | |
| Science H (Ionosphere) | Test Observation | Station Failure | |
| Science N (AGN) | Maintenance Mode | Piggyback Control | |

Observing Plan for Iofarsrv Computer MPIfR Effelsberg LOFAR Station 2014-01-01 through 2014-01-31

For any publication based on observations with the Effelsberg LOFAR station, please use the following acknowledgment: "Based on observations made with the Effelsberg LOFAR station of the Max-Planck-Institut für Radioastronomie (MPIfR) at Effelsberg."



Normal Experiment Code Markers

0 ELM2014-000 Kuniyoshi, Horneff

Other Code Markers

Color Meanings

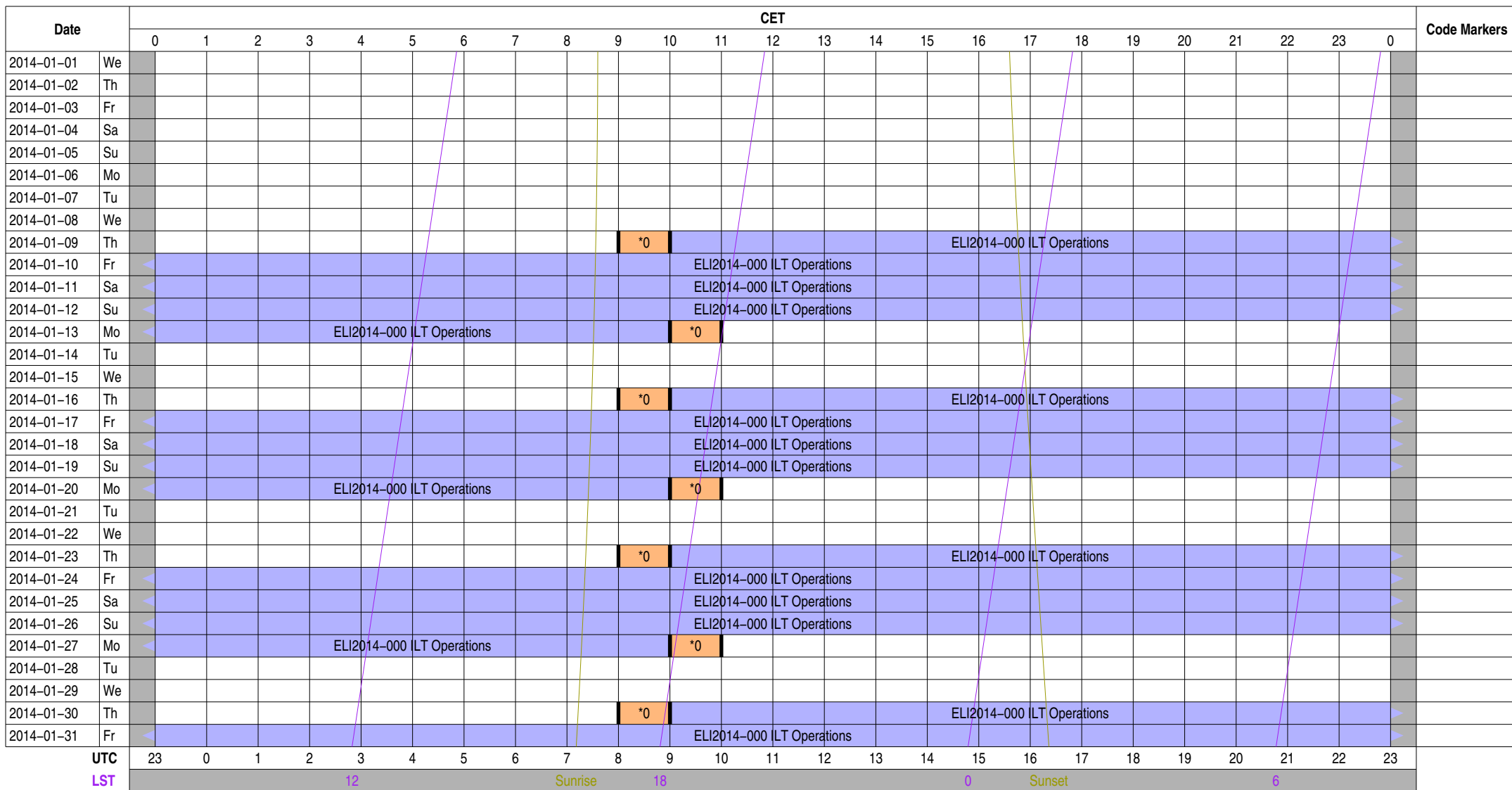
| | | | |
|---------------------------|--------------------------|-------------------|---------------------------|
| Science A (Astrometry) | Science O (Other) | ILT Mode | Piggyback Without Control |
| Science C (Cosmology) | Science P (Pulsar) | Effelsberg Mode | Experiment Warning |
| Science E (Extragalactic) | Science R (Cosmic Rays) | GLOW Mode | Override Possible |
| Science G (Galactic) | Science S (Solar System) | Juelich Mode | |
| Science H (Ionosphere) | Test Observation | Station Failure | |
| Science N (AGN) | Maintenance Mode | Piggyback Control | |

Observing Plan for LOFAR Fiber Connection

MPIfR Effelsberg LOFAR Station

2014-01-01 through 2014-01-31

For any publication based on observations with the Effelsberg LOFAR station, please use the following acknowledgment: "Based on observations made with the Effelsberg LOFAR station of the Max-Planck-Institut für Radioastronomie (MPIfR) at Effelsberg."



Normal Experiment Code Markers

0 ELM2014-000 Kuniyoshi, Horneff

Other Code Markers

Color Meanings

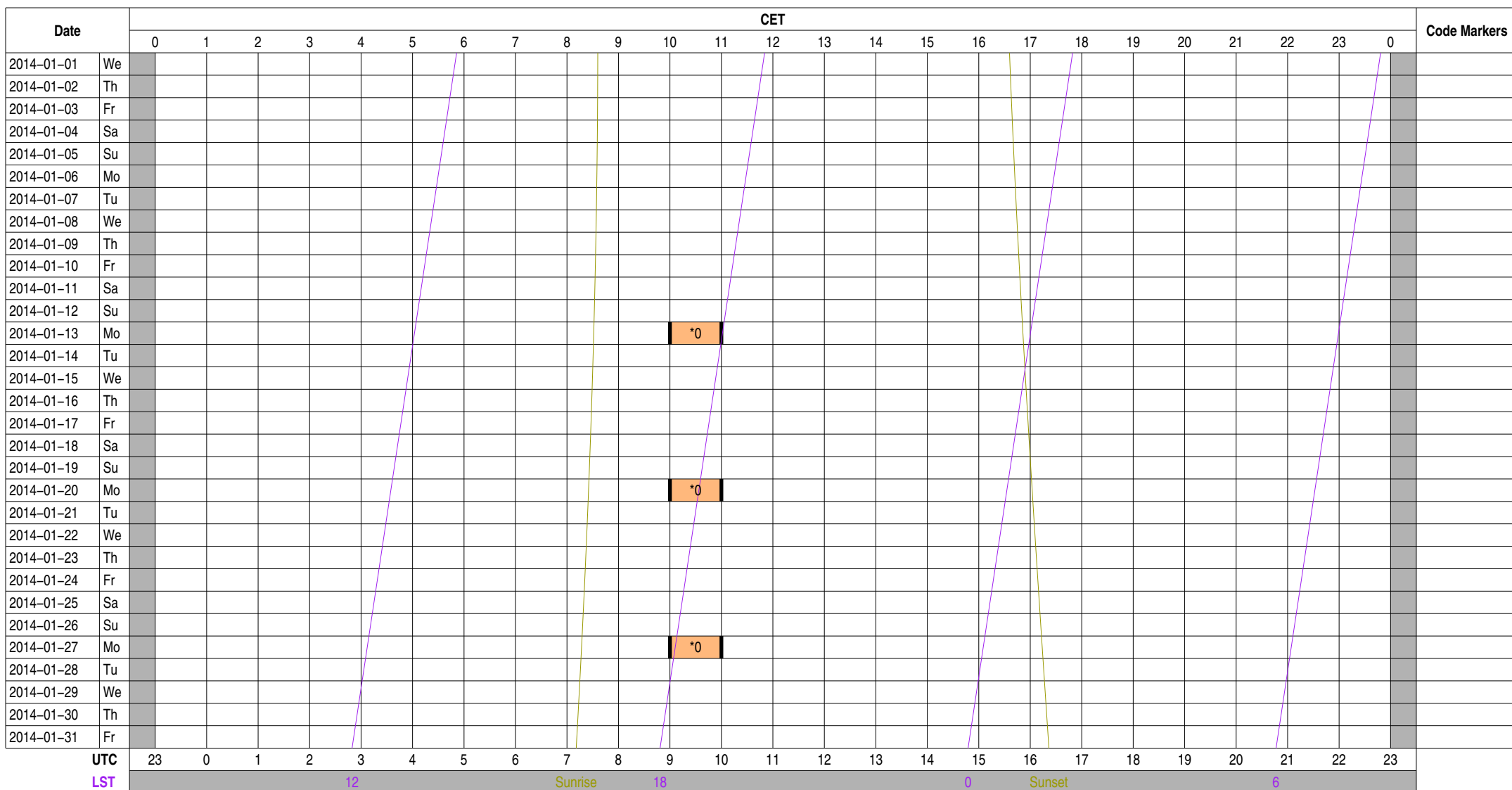
| | | | |
|---------------------------|--------------------------|-------------------|---------------------------|
| Science A (Astrometry) | Science O (Other) | ILT Mode | Piggyback Without Control |
| Science C (Cosmology) | Science P (Pulsar) | Effelsberg Mode | Experiment Warning |
| Science E (Extragalactic) | Science R (Cosmic Rays) | GLOW Mode | Override Possible |
| Science G (Galactic) | Science S (Solar System) | Juelich Mode | |
| Science H (Ionosphere) | Test Observation | Station Failure | |
| Science N (AGN) | Maintenance Mode | Piggyback Control | |

Observing Plan for LOFAR Bonn--EF Fiber Connection

MPIfR Effelsberg LOFAR Station

2014-01-01 through 2014-01-31

For any publication based on observations with the Effelsberg LOFAR station, please use the following acknowledgment: "Based on observations made with the Effelsberg LOFAR station of the Max-Planck-Institut für Radioastronomie (MPIfR) at Effelsberg."



Normal Experiment Code Markers

0 ELM2014-000 Kuniyoshi, Horneff

Other Code Markers

Color Meanings

| | | | |
|---------------------------|--------------------------|-------------------|---------------------------|
| Science A (Astrometry) | Science O (Other) | ILT Mode | Piggyback Without Control |
| Science C (Cosmology) | Science P (Pulsar) | Effelsberg Mode | Experiment Warning |
| Science E (Extragalactic) | Science R (Cosmic Rays) | GLOW Mode | Override Possible |
| Science G (Galactic) | Science S (Solar System) | Juelich Mode | |
| Science H (Ionosphere) | Test Observation | Station Failure | |
| Science N (AGN) | Maintenance Mode | Piggyback Control | |

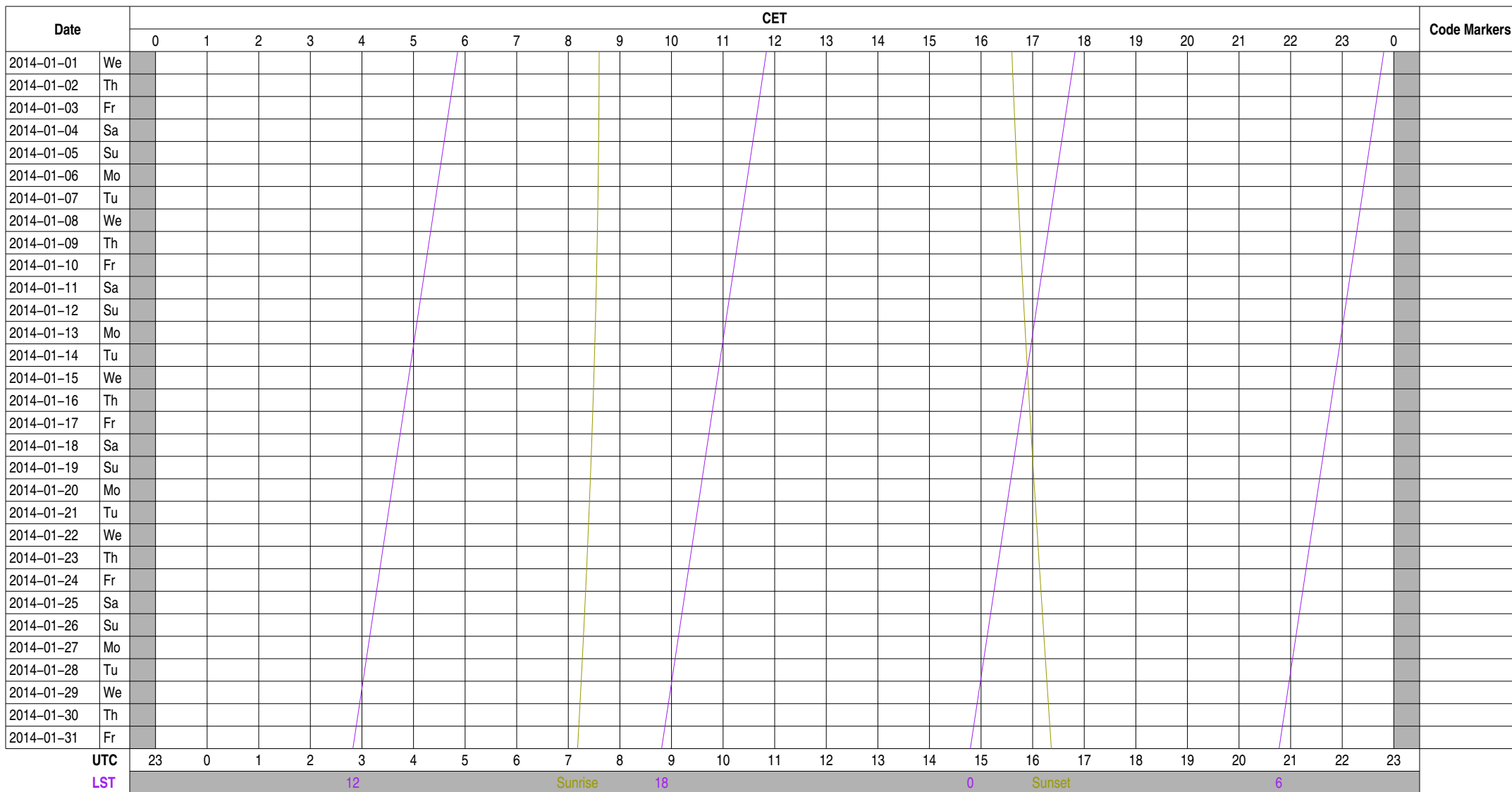
Version: draft
 Creation Date: 2014-02-19T15:51:28.290713Z
 Operator Telephone: +49 2257 301 155
 Web Page: https://deki.mpifr-bonn.mpg.de/Cooperations/LOFAR/Effelsberg_LOFAR_Schedule

Observing Plan for Operator On-Duty

MPIfR Effelsberg LOFAR Station

2014-01-01 through 2014-01-31

For any publication based on observations with the Effelsberg LOFAR station, please use the following acknowledgment: "Based on observations made with the Effelsberg LOFAR station of the Max-Planck-Institut für Radioastronomie (MPIfR) at Effelsberg."



Normal Experiment Code Markers

Other Code Markers

Color Meanings

- 100 m Operator
- Anderson
- Kuniyoshi
- Horneffer
- Other
- Unknown

Experiment Information for Normal Observations

| | | | | |
|--------------------|--------------------------------------|------------------------------------|-------------------------|--|
| ELI2013-009 | Serylak, Verbiest et al. | joris.verbiest@gmail.com | +49 521 106 3184 | LC1_048 Studying Pulsars and the Interstellar Medium using |
| ELI2013-009 F | Serylak, Verbiest et al. | joris.verbiest@gmail.com | +49 521 106 3184 | LC1_048 Studying Pulsars and the Interstellar Medium using |
| ELI2014-000 | ILT Operations | observer@astron.nl | +31 521 595 777 | Main ILT Observations, ILT Operations only on-duty 9--17, M |
| ELI2014-000 | ILT Operations | observer@astron.nl | +31 521 595 777 | Main ILT Observations, ILT Operations only on-duty 9--17, M |
| ELI2014-000 | ILT Operations | observer@astron.nl | +31 521 595 777 | Main ILT Observations, ILT Operations only on-duty 9--17, M |
| ELI2014-000 | ILT Operations | observer@astron.nl | +31 521 595 777 | Main ILT Observations, ILT Operations only on-duty 9--17, M |
| ELM2014-000 | Kuniyoshi, Horneffer, Adebahr | lofar-ops@mpifr-bonn.mpg.de | +49 228 525 505 | Handover operations for local to ILT mode (MPIfR time) |
| ELM2014-000 | Kuniyoshi, Horneffer, Adebahr | lofar-ops@mpifr-bonn.mpg.de | +49 228 525 505 | Handover operations for local to ILT mode (MPIfR time) |
| ELM2014-000 | Kuniyoshi, Horneffer, Adebahr | lofar-ops@mpifr-bonn.mpg.de | +49 228 525 505 | Handover operations for local to ILT mode (MPIfR time) |
| ELM2014-000 | Kuniyoshi, Horneffer, Adebahr | lofar-ops@mpifr-bonn.mpg.de | +49 228 525 505 | Handover operations for local to ILT mode (MPIfR time) |
| ELM2014-000 | Kuniyoshi, Horneffer, Adebahr | lofar-ops@mpifr-bonn.mpg.de | +49 228 525 505 | Handover operations for local to ILT mode (MPIfR time) |
| ELM2014-000 | Kuniyoshi, Horneffer, Adebahr | lofar-ops@mpifr-bonn.mpg.de | +49 228 525 505 | Handover operations for local to ILT mode (MPIfR time) |
| ELM2014-000 | Kuniyoshi, Horneffer, Adebahr | lofar-ops@mpifr-bonn.mpg.de | +49 228 525 505 | Handover operations for local to ILT mode (MPIfR time) |
| ELP2012-022 | Verbiest | verbiest@mpifr-bonn.mpg.de | +49 228 525 246 | Assessing the Timing Potential of LOFAR for Pulsars |
| ELP2012-022 AR | Verbiest | verbiest@mpifr-bonn.mpg.de | +49 228 525 246 | Assessing the Timing Potential of LOFAR for Pulsars |
| ELP2014-000 | Verbiest, Osłowski | joris.verbiest@gmail.com | +49 521 106 3184 | Generig Long Term Pulsar Monitoring |
| ELP2014-000 A | Verbiest, Osłowski | joris.verbiest@gmail.com | +49 521 106 3184 | Generig Long Term Pulsar Monitoring |
| ELP2014-000 A | Verbiest, Osłowski | joris.verbiest@gmail.com | +49 521 106 3184 | Generig Long Term Pulsar Monitoring |
| ELP2014-000 A | Verbiest, Osłowski | joris.verbiest@gmail.com | +49 521 106 3184 | Generig Long Term Pulsar Monitoring |

Experiment Information for Other Actions

Experiment Information for Operator On-Duty Schedule

Time Usage [hours] for Normal Observations

| Experiment Code | station | TBB | HBA | LBH | LBL | interfe | lofarAN | lofarBN | lofarx | lofarsr | fiber | BN--EF_ | duty |
|--------------------|---------------|---------------|---------------|---------------|---------------|---------------|-------------|---------------|---------------|-------------|---------------|-------------|------|
| ELI2013-009 | 24.00 | | 24.00 | | | | | 24.00 | 24.00 | | | | |
| ELI2013-009 F | 24.00 | | 24.00 | | | | | 24.00 | 24.00 | | | | |
| ELI2014-000 | 326.00 | 326.00 | 326.00 | 326.00 | 326.00 | 326.00 | | | | | 326.00 | | |
| ELI2014-000 | 96.00 | 96.00 | 96.00 | 96.00 | 96.00 | 96.00 | | | | | 96.00 | | |
| ELI2014-000 | 96.00 | 96.00 | 96.00 | 96.00 | 96.00 | 96.00 | | | | | 96.00 | | |
| ELI2014-000 | 96.00 | 96.00 | 96.00 | 96.00 | 96.00 | 96.00 | | | | | 96.00 | | |
| ELI2014-000 | 38.00 | 38.00 | 38.00 | 38.00 | 38.00 | 38.00 | | | | | 38.00 | | |
| ELM2014-000 | 7.00 | 7.00 | 7.00 | 7.00 | 7.00 | 7.00 | 3.00 | 3.00 | 3.00 | 3.00 | 7.00 | 3.00 | |
| ELM2014-000 | 1.00 | 1.00 | 1.00 | 1.00 | 1.00 | 1.00 | | | | | 1.00 | | |
| ELM2014-000 | 1.00 | 1.00 | 1.00 | 1.00 | 1.00 | 1.00 | 1.00 | 1.00 | 1.00 | 1.00 | 1.00 | 1.00 | |
| ELM2014-000 | 1.00 | 1.00 | 1.00 | 1.00 | 1.00 | 1.00 | | | | | 1.00 | | |
| ELM2014-000 | 1.00 | 1.00 | 1.00 | 1.00 | 1.00 | 1.00 | 1.00 | 1.00 | 1.00 | 1.00 | 1.00 | 1.00 | |
| ELM2014-000 | 1.00 | 1.00 | 1.00 | 1.00 | 1.00 | 1.00 | 1.00 | 1.00 | 1.00 | 1.00 | 1.00 | 1.00 | |
| ELM2014-000 | 1.00 | 1.00 | 1.00 | 1.00 | 1.00 | 1.00 | 1.00 | 1.00 | 1.00 | 1.00 | 1.00 | 1.00 | |
| ELM2014-000 | 1.00 | 1.00 | 1.00 | 1.00 | 1.00 | 1.00 | | | | | 1.00 | | |
| ELP2012-022 | 0.00 | | 0.00 | | | | | 0.00 | 0.00 | | | | |
| ELP2012-022 AR | 0.00 | | 0.00 | | | | | 0.00 | 0.00 | | | | |
| ELP2014-000 | 387.00 | | 387.00 | | | | | 387.00 | 387.00 | | | | |
| ELP2014-000 A | 201.00 | | 201.00 | | | | | 201.00 | 201.00 | | | | |
| ELP2014-000 A | 46.00 | | 46.00 | | | | | 46.00 | 46.00 | | | | |
| ELP2014-000 A | 70.00 | | 70.00 | | | | | 70.00 | 70.00 | | | | |
| ELP2014-000 A | 70.00 | | 70.00 | | | | | 70.00 | 70.00 | | | | |

Time Usage [hours] for Other Actions

| Experiment Code | station | TBB | HBA | LBH | LBL | interfe | lofarAN | lofarBN | lofarx | lofarsr | fiber | BN--EF_ | duty |
|-----------------|---------|-----|-----|-----|-----|---------|---------|---------|--------|---------|-------|---------|------|
|-----------------|---------|-----|-----|-----|-----|---------|---------|---------|--------|---------|-------|---------|------|

Time Usage [hours] for Operator On-Duty Schedule

Experiment Code

station

TBB

HBA

LBH

LBL

interfe

lofarAN

lofarBN

lofarx

lofarsr

fiber

BN--EF_

duty

