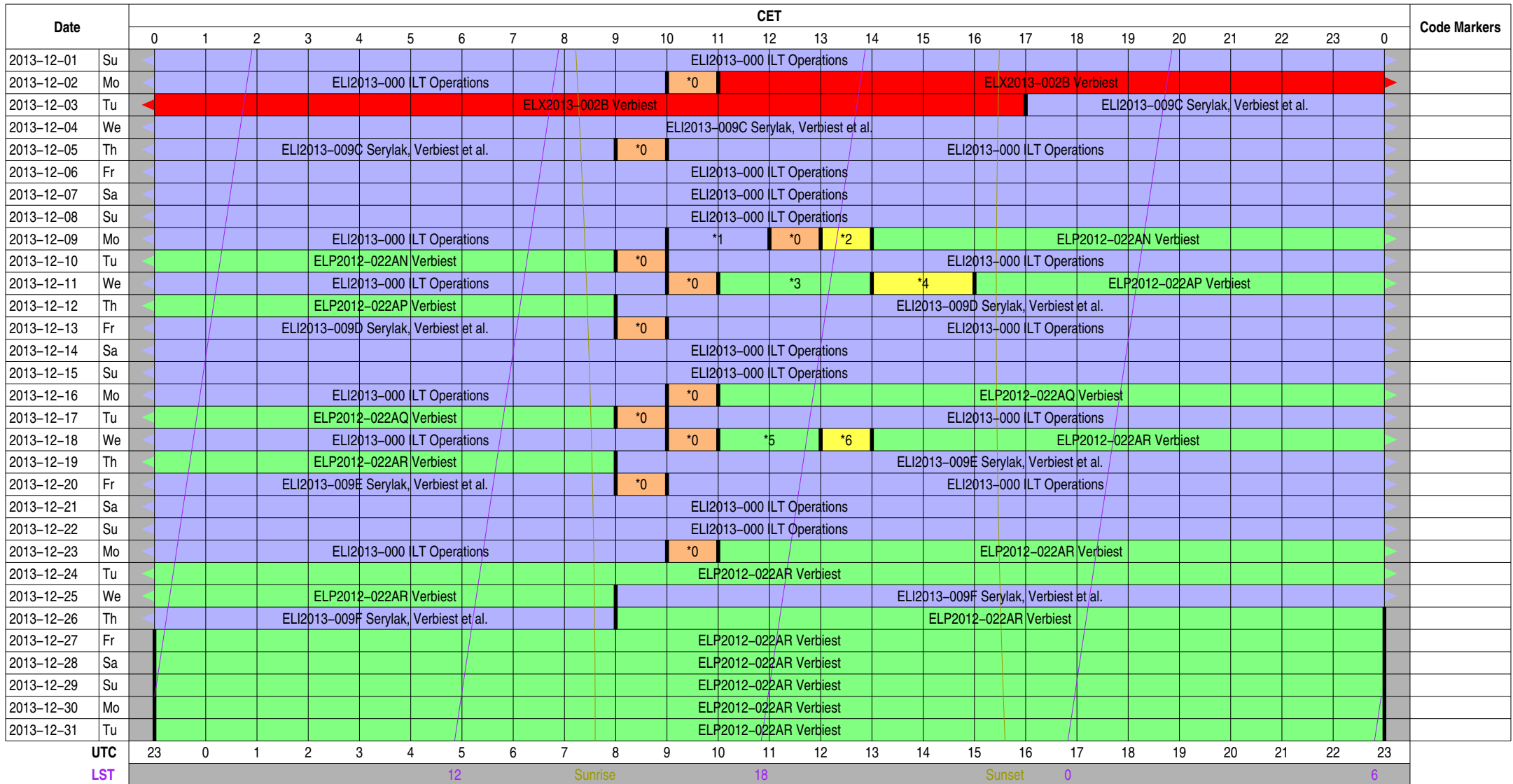


Observing Plan for Station Control (LCU)

MPIfR Effelsberg LOFAR Station

2013-12-01 through 2013-12-31

For any publication based on observations with the Effelsberg LOFAR station, please use the following acknowledgment: "Based on observations made with the Effelsberg LOFAR station of the Max-Planck-Institut für Radioastronomie (MPIfR) at Effelsberg."



Normal Experiment Code Markers

- 0 ELM2013-012 Kuniyoshi, Horneff
- 1 ELI2013-010 ILT Operations
- 2 ELT2013-006C Horneffer
- 3 ELP2012-022AO Verbiest
- 4 ELT2013-006D Horneffer
- 5 ELP2012-022AR Verbiest
- 6 ELT2013-006E Horneffer

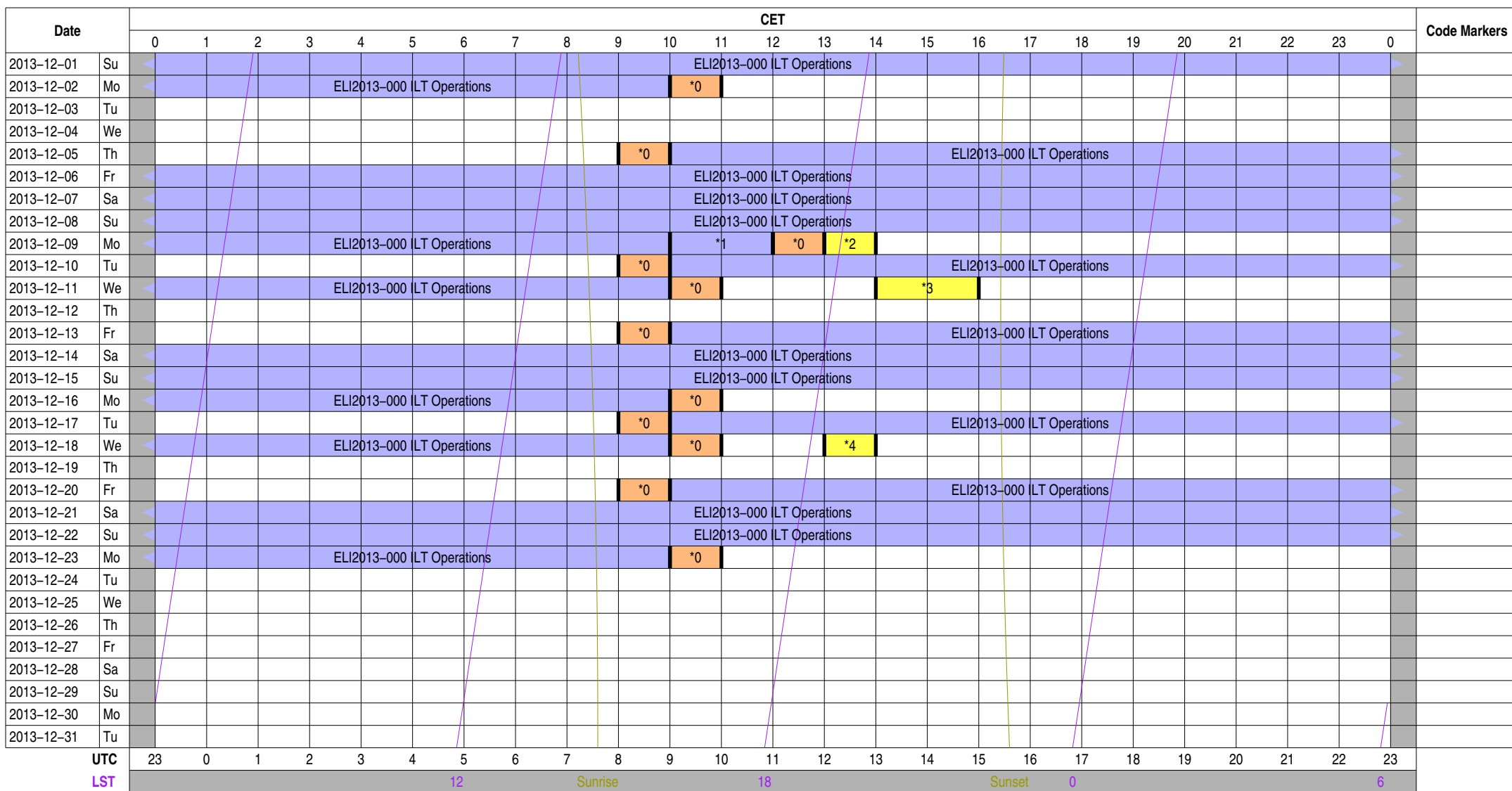
Other Code Markers

Color Meanings

- | | | | |
|---------------------------|--------------------------|-------------------|---------------------------|
| Science A (Astrometry) | Science O (Other) | ILT Mode | Piggyback Without Control |
| Science C (Cosmology) | Science P (Pulsar) | Effelsberg Mode | Experiment Warning |
| Science E (Extragalactic) | Science R (Cosmic Rays) | GLOW Mode | Override Possible |
| Science G (Galactic) | Science S (Solar System) | Juelich Mode | |
| Science H (Ionosphere) | Test Observation | Station Failure | |
| Science N (AGN) | Maintenance Mode | Piggyback Control | |

Observing Plan for Transient Buffer Boards MPIfR Effelsberg LOFAR Station 2013-12-01 through 2013-12-31

For any publication based on observations with the Effelsberg LOFAR station, please use the following acknowledgment: "Based on observations made with the Effelsberg LOFAR station of the Max-Planck-Institut für Radioastronomie (MPIfR) at Effelsberg."



Normal Experiment Code Markers

- 0 ELM2013-012 Kuniyoshi, Horneff
- 1 ELI2013-010 ILT Operations
- 2 ELT2013-006C Horneffer
- 3 ELT2013-006D Horneffer
- 4 ELT2013-006E Horneffer

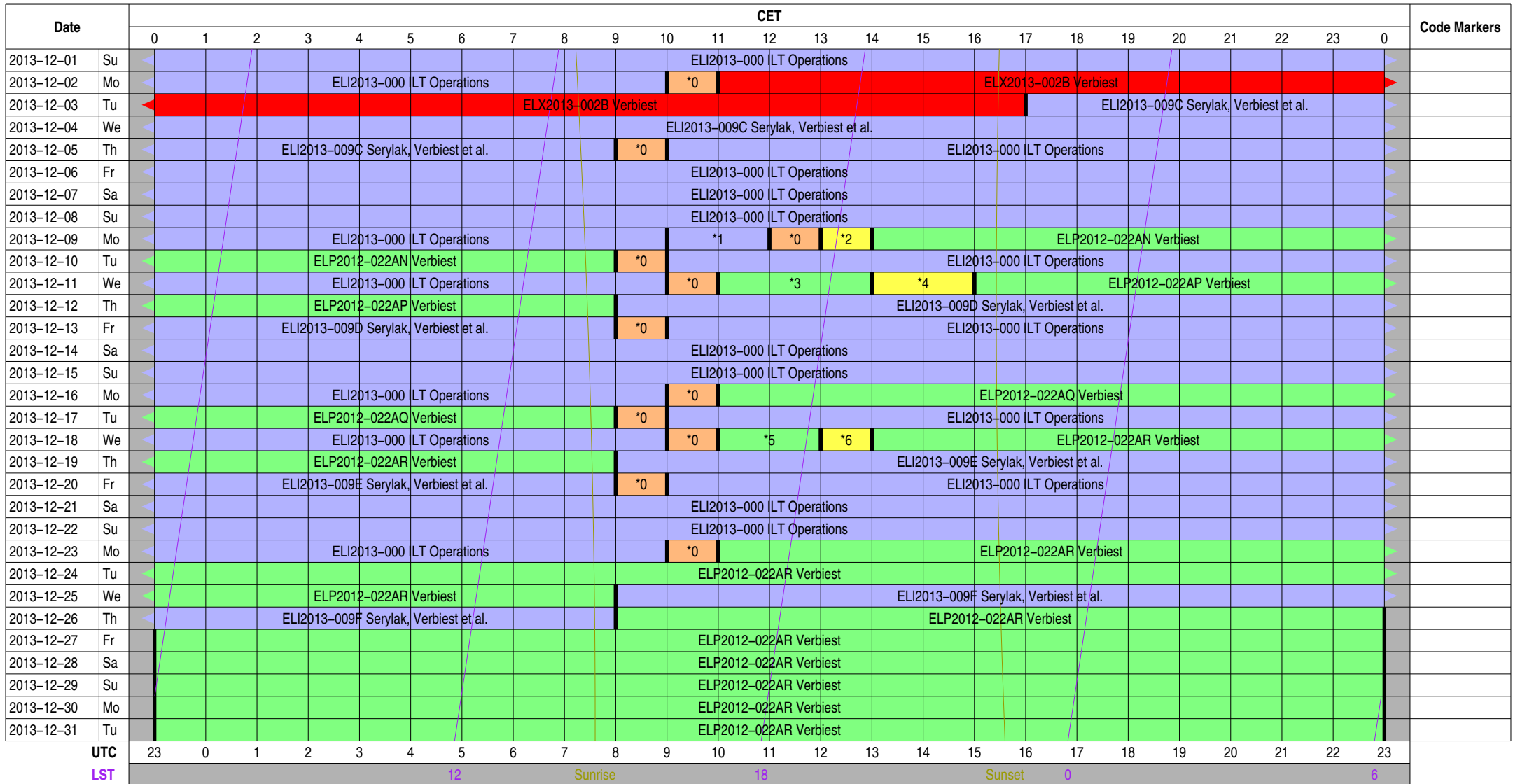
Other Code Markers

Color Meanings

- | | | | |
|---------------------------|--------------------------|-------------------|---------------------------|
| Science A (Astrometry) | Science O (Other) | ILT Mode | Piggyback Without Control |
| Science C (Cosmology) | Science P (Pulsar) | Effelsberg Mode | Experiment Warning |
| Science E (Extragalactic) | Science R (Cosmic Rays) | GLOW Mode | Override Possible |
| Science G (Galactic) | Science S (Solar System) | Juelich Mode | |
| Science H (Ionosphere) | Test Observation | Station Failure | |
| Science N (AGN) | Maintenance Mode | Piggyback Control | |

Observing Plan for HBA MPIfR Effelsberg LOFAR Station 2013-12-01 through 2013-12-31

For any publication based on observations with the Effelsberg LOFAR station, please use the following acknowledgment: "Based on observations made with the Effelsberg LOFAR station of the Max-Planck-Institut für Radioastronomie (MPIfR) at Effelsberg."



Normal Experiment Code Markers

- 0 ELM2013-012 Kuniyoshi, Horneff
- 1 ELI2013-010 ILT Operations
- 2 ELT2013-006C Horneffer
- 3 ELP2012-022AO Verbiest
- 4 ELT2013-006D Horneffer
- 5 ELP2012-022AR Verbiest
- 6 ELT2013-006E Horneffer

Other Code Markers

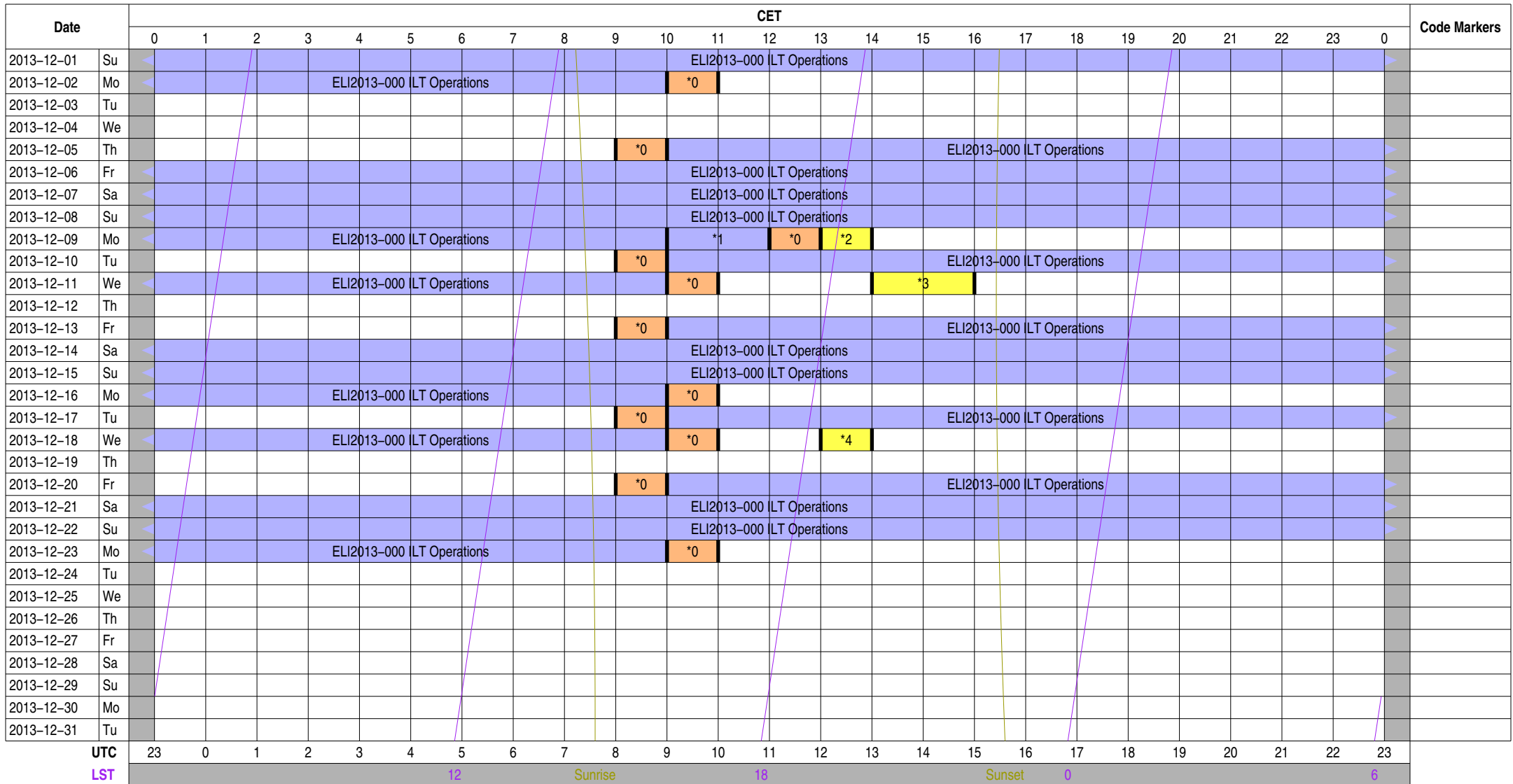
Color Meanings

- | | | |
|---------------------------|--------------------------|-------------------|
| Science A (Astrometry) | Science O (Other) | ILT Mode |
| Science C (Cosmology) | Science P (Pulsar) | Effelsberg Mode |
| Science E (Extragalactic) | Science R (Cosmic Rays) | GLOW Mode |
| Science G (Galactic) | Science S (Solar System) | Juelich Mode |
| Science H (Ionosphere) | Test Observation | Station Failure |
| Science N (AGN) | Maintenance Mode | Piggyback Control |

- Piggyback Without Control
- Experiment Warning
- Override Possible

Observing Plan for Low Band High (LBA) MPIfR Effelsberg LOFAR Station 2013-12-01 through 2013-12-31

For any publication based on observations with the Effelsberg LOFAR station, please use the following acknowledgment: "Based on observations made with the Effelsberg LOFAR station of the Max-Planck-Institut für Radioastronomie (MPIfR) at Effelsberg."



Normal Experiment Code Markers

- 0 ELM2013-012 Kuniyoshi, Horneff
- 1 ELI2013-010 ILT Operations
- 2 ELT2013-006C Horneffer
- 3 ELT2013-006D Horneffer
- 4 ELT2013-006E Horneffer

Other Code Markers

Color Meanings

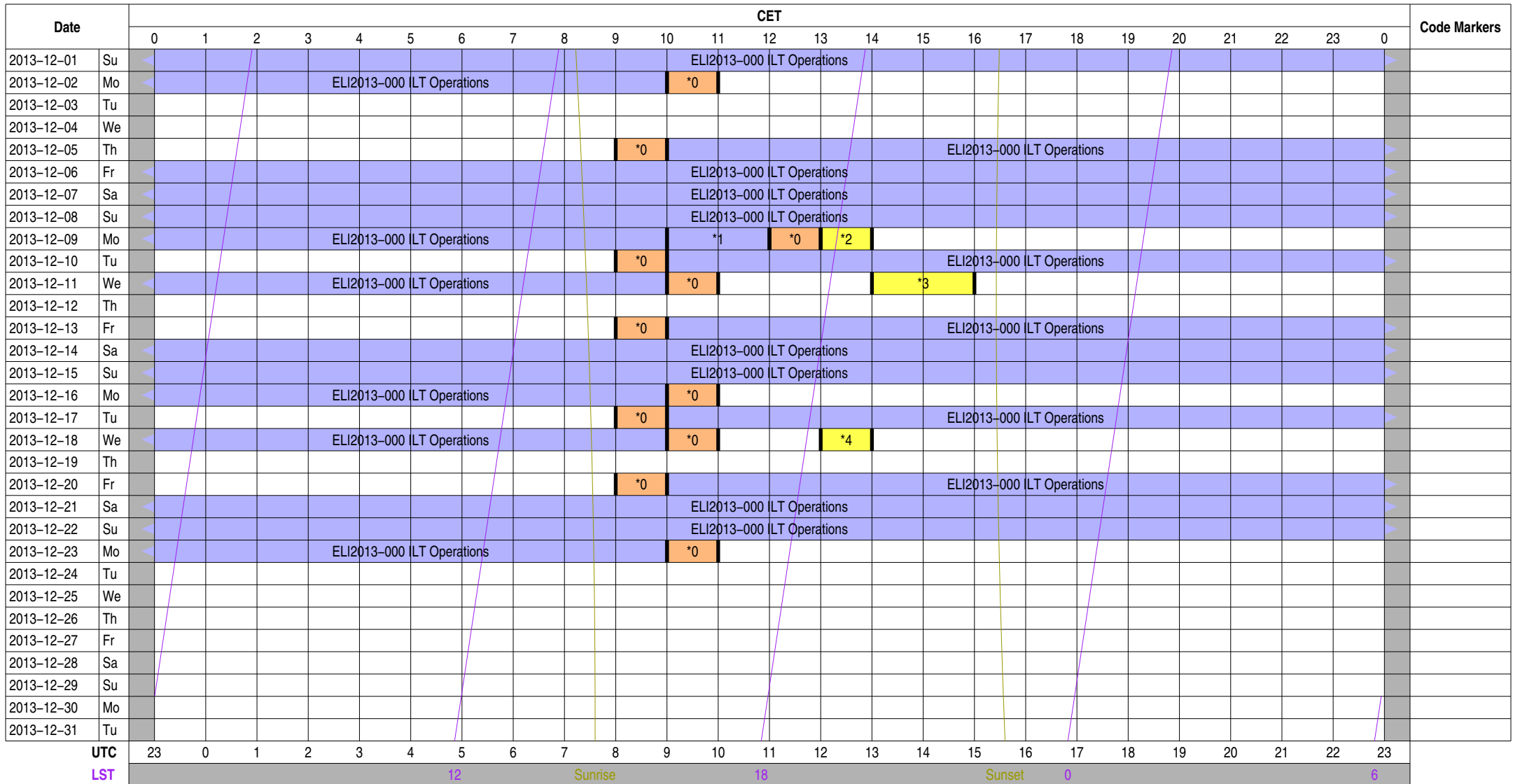
- | | | | |
|---------------------------|--------------------------|-------------------|---------------------------|
| Science A (Astrometry) | Science O (Other) | ILT Mode | Piggyback Without Control |
| Science C (Cosmology) | Science P (Pulsar) | Effelsberg Mode | Experiment Warning |
| Science E (Extragalactic) | Science R (Cosmic Rays) | GLOW Mode | Override Possible |
| Science G (Galactic) | Science S (Solar System) | Juelich Mode | |
| Science H (Ionosphere) | Test Observation | Station Failure | |
| Science N (AGN) | Maintenance Mode | Piggyback Control | |

Observing Plan for Low Band Low, Unused Inputs

MPIfR Effelsberg LOFAR Station

2013-12-01 through 2013-12-31

For any publication based on observations with the Effelsberg LOFAR station, please use the following acknowledgment: "Based on observations made with the Effelsberg LOFAR station of the Max-Planck-Institut für Radioastronomie (MPIfR) at Effelsberg."



Normal Experiment Code Markers

- 0 ELM2013-012 Kuniyoshi, Horneff
- 1 ELI2013-010 ILT Operations
- 2 ELT2013-006C Horneffer
- 3 ELT2013-006D Horneffer
- 4 ELT2013-006E Horneffer

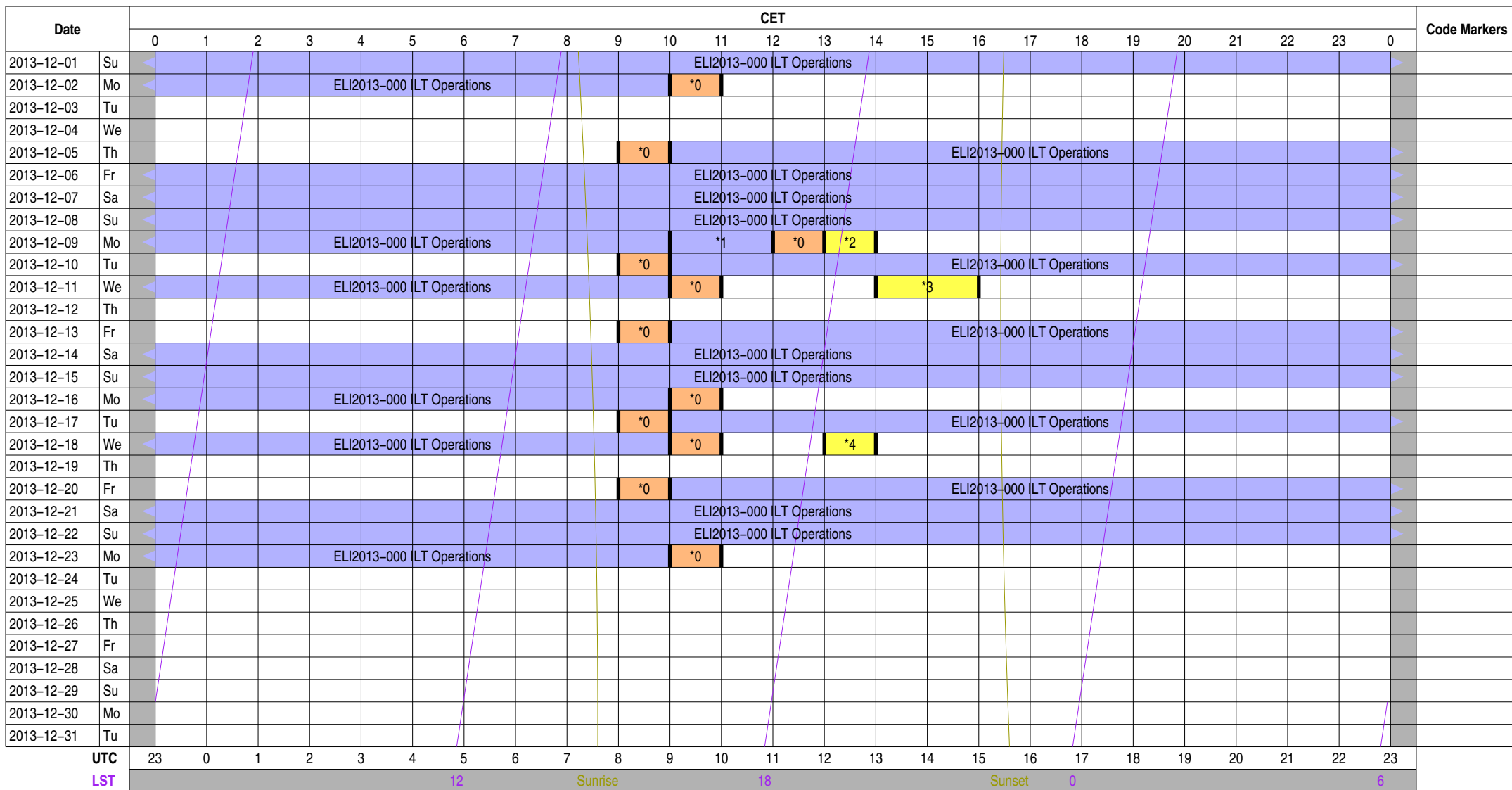
Other Code Markers

Color Meanings

- | | | | |
|---------------------------|--------------------------|-------------------|---------------------------|
| Science A (Astrometry) | Science O (Other) | ILT Mode | Piggyback Without Control |
| Science C (Cosmology) | Science P (Pulsar) | Effelsberg Mode | Experiment Warning |
| Science E (Extragalactic) | Science R (Cosmic Rays) | GLOW Mode | Override Possible |
| Science G (Galactic) | Science S (Solar System) | Juelich Mode | |
| Science H (Ionosphere) | Test Observation | Station Failure | |
| Science N (AGN) | Maintenance Mode | Piggyback Control | |

Observing Plan for Station Interferometer MPIfR Effelsberg LOFAR Station 2013-12-01 through 2013-12-31

For any publication based on observations with the Effelsberg LOFAR station, please use the following acknowledgment: "Based on observations made with the Effelsberg LOFAR station of the Max-Planck-Institut für Radioastronomie (MPIfR) at Effelsberg."



Normal Experiment Code Markers

- 0 ELM2013-012 Kuniyoshi, Horneff
- 1 ELI2013-010 ILT Operations
- 2 ELT2013-006C Horneffer
- 3 ELT2013-006D Horneffer
- 4 ELT2013-006E Horneffer

Other Code Markers

Color Meanings

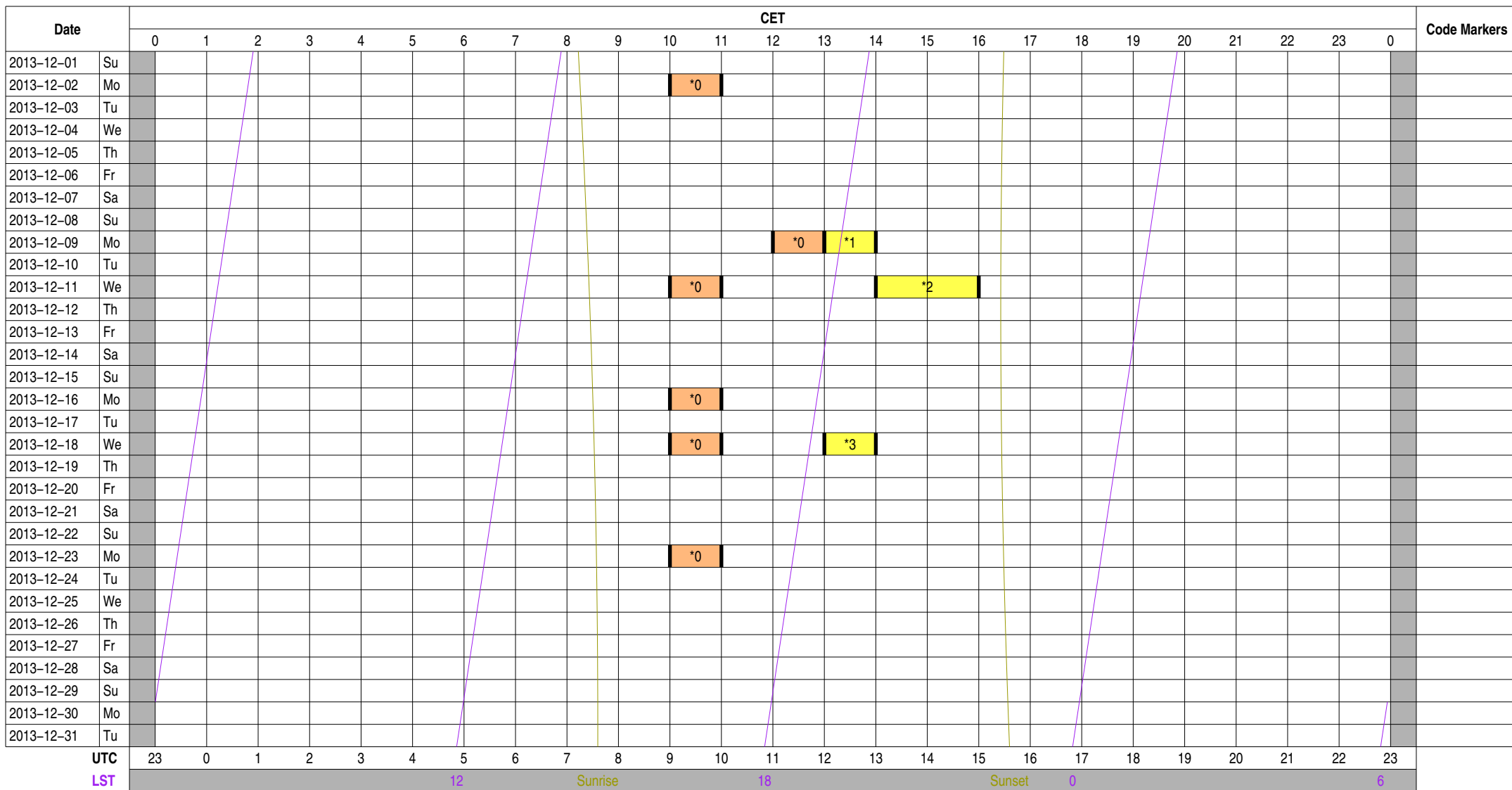
- | | | | |
|---------------------------|--------------------------|-------------------|---------------------------|
| Science A (Astrometry) | Science O (Other) | ILT Mode | Piggyback Without Control |
| Science C (Cosmology) | Science P (Pulsar) | Effelsberg Mode | Experiment Warning |
| Science E (Extragalactic) | Science R (Cosmic Rays) | GLOW Mode | Override Possible |
| Science G (Galactic) | Science S (Solar System) | Juelich Mode | |
| Science H (Ionosphere) | Test Observation | Station Failure | |
| Science N (AGN) | Maintenance Mode | Piggyback Control | |

Observing Plan for IofarAN Computers

MPIfR Effelsberg LOFAR Station

2013-12-01 through 2013-12-31

For any publication based on observations with the Effelsberg LOFAR station, please use the following acknowledgment: "Based on observations made with the Effelsberg LOFAR station of the Max-Planck-Institut für Radioastronomie (MPIfR) at Effelsberg."



Normal Experiment Code Markers

- 0 ELM2013-012 Kuniyoshi, Horneff
- 1 ELT2013-006C Horneffer
- 2 ELT2013-006D Horneffer
- 3 ELT2013-006E Horneffer

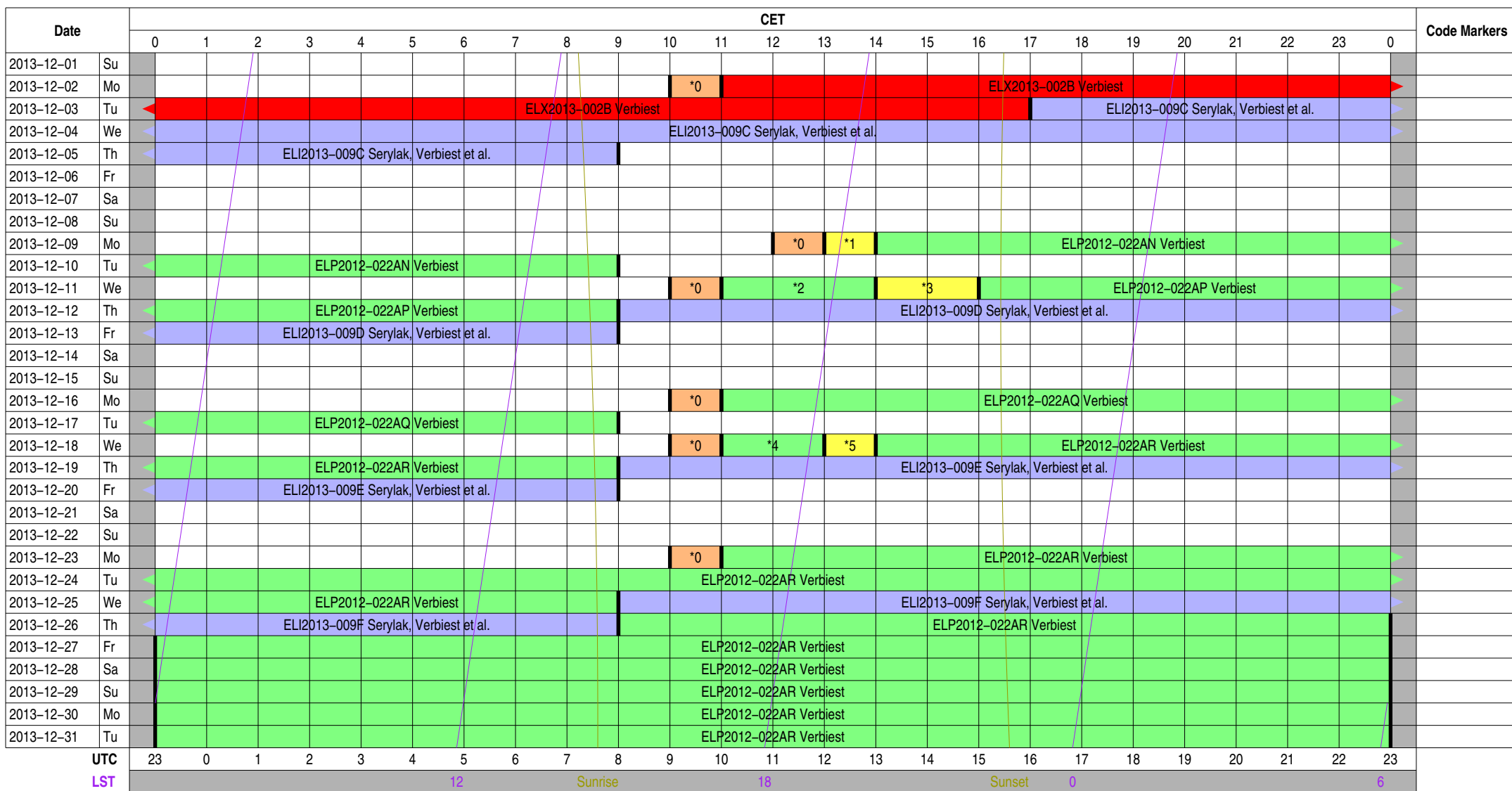
Other Code Markers

Color Meanings

- | | | | |
|---------------------------|--------------------------|-------------------|---------------------------|
| Science A (Astrometry) | Science O (Other) | ILT Mode | Piggyback Without Control |
| Science C (Cosmology) | Science P (Pulsar) | Effelsberg Mode | Experiment Warning |
| Science E (Extragalactic) | Science R (Cosmic Rays) | GLOW Mode | Override Possible |
| Science G (Galactic) | Science S (Solar System) | Juelich Mode | |
| Science H (Ionosphere) | Test Observation | Station Failure | |
| Science N (AGN) | Maintenance Mode | Piggyback Control | |

Observing Plan for IofarBN Computers MPIfR Effelsberg LOFAR Station 2013-12-01 through 2013-12-31

For any publication based on observations with the Effelsberg LOFAR station, please use the following acknowledgment: "Based on observations made with the Effelsberg LOFAR station of the Max-Planck-Institut für Radioastronomie (MPIfR) at Effelsberg."



Normal Experiment Code Markers

- 0 ELM2013-012 Kuniyoshi, Horneff
- 1 ELT2013-006C Horneffer
- 2 ELP2012-022AO Verbiest
- 3 ELT2013-006D Horneffer
- 4 ELP2012-022AR Verbiest
- 5 ELT2013-006E Horneffer

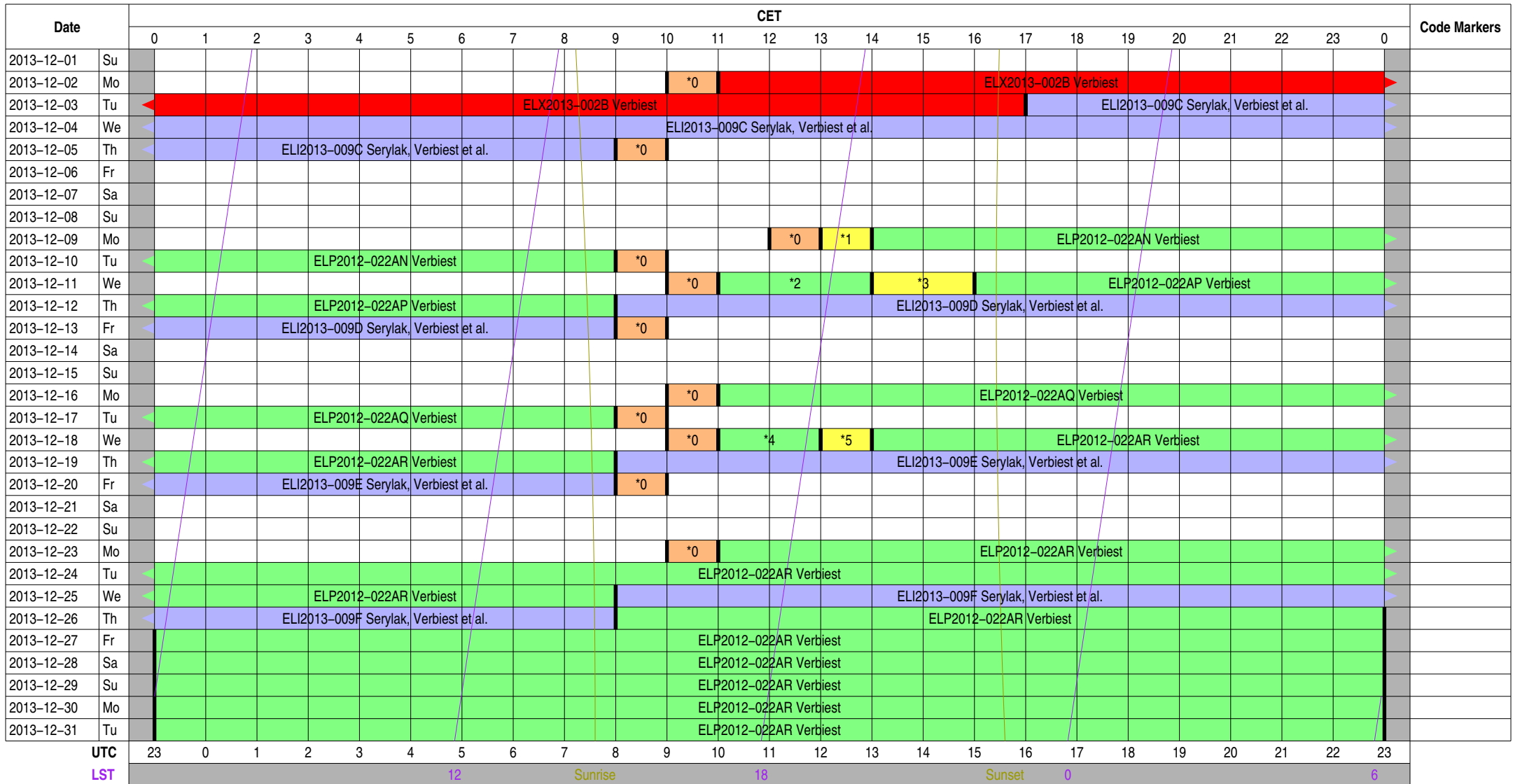
Other Code Markers

Color Meanings

- | | | | |
|---------------------------|--------------------------|-------------------|---------------------------|
| Science A (Astrometry) | Science O (Other) | ILT Mode | Piggyback Without Control |
| Science C (Cosmology) | Science P (Pulsar) | Effelsberg Mode | Experiment Warning |
| Science E (Extragalactic) | Science R (Cosmic Rays) | GLOW Mode | Override Possible |
| Science G (Galactic) | Science S (Solar System) | Juelich Mode | |
| Science H (Ionosphere) | Test Observation | Station Failure | |
| Science N (AGN) | Maintenance Mode | Piggyback Control | |

Observing Plan for Iofarx Computer MPIfR Effelsberg LOFAR Station 2013-12-01 through 2013-12-31

For any publication based on observations with the Effelsberg LOFAR station, please use the following acknowledgment: "Based on observations made with the Effelsberg LOFAR station of the Max-Planck-Institut für Radioastronomie (MPIfR) at Effelsberg."



Normal Experiment Code Markers

- 0 ELM2013-012 Kuniyoshi, Horneff
- 1 ELT2013-006C Horneffer
- 2 ELP2012-022AO Verbiest
- 3 ELT2013-006D Horneffer
- 4 ELP2012-022AR Verbiest
- 5 ELT2013-006E Horneffer

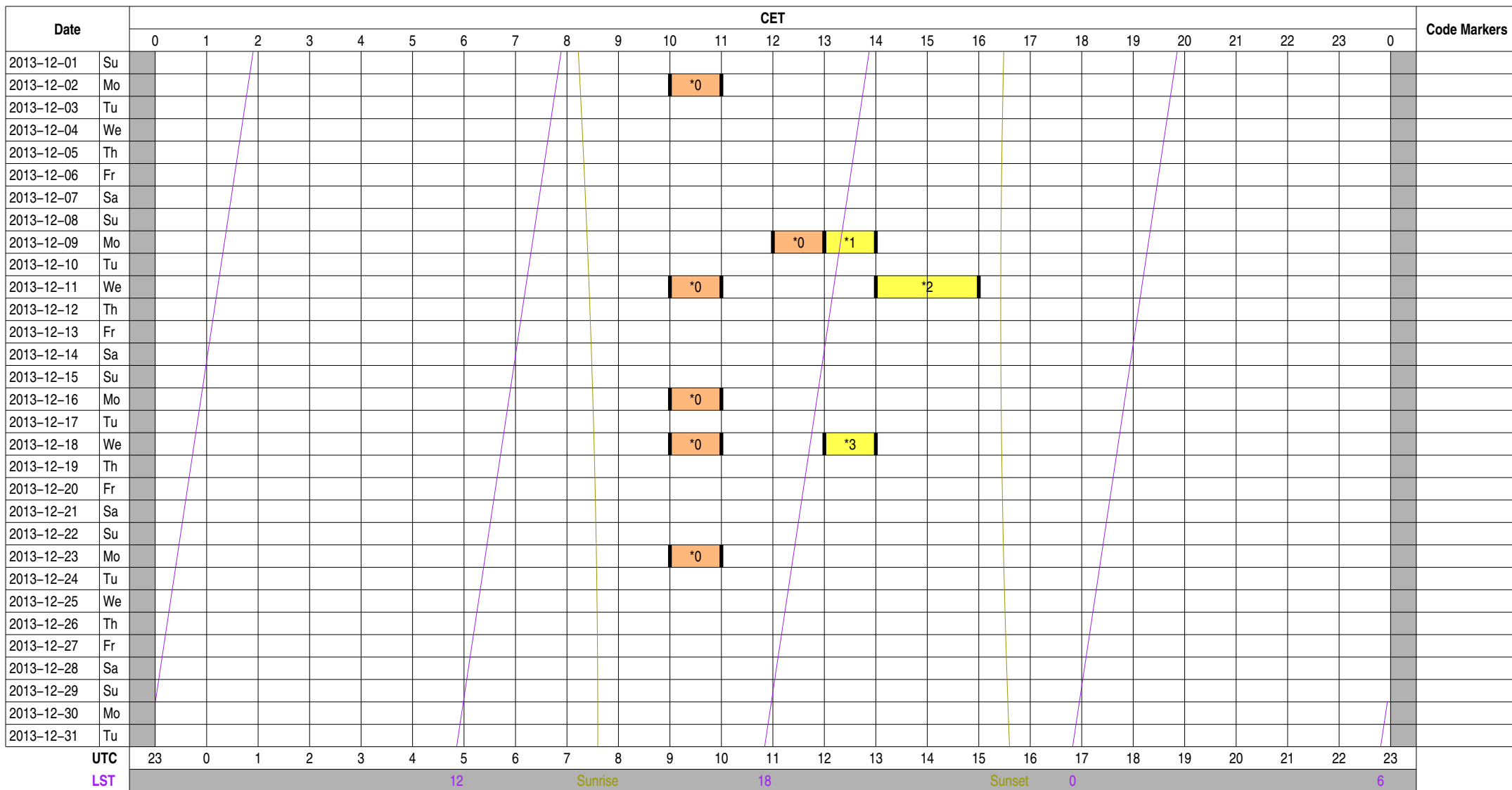
Other Code Markers

Color Meanings

- | | | | |
|---------------------------|--------------------------|-------------------|---------------------------|
| Science A (Astrometry) | Science O (Other) | ILT Mode | Piggyback Without Control |
| Science C (Cosmology) | Science P (Pulsar) | Effelsberg Mode | Experiment Warning |
| Science E (Extragalactic) | Science R (Cosmic Rays) | GLOW Mode | Override Possible |
| Science G (Galactic) | Science S (Solar System) | Juelich Mode | |
| Science H (Ionosphere) | Test Observation | Station Failure | |
| Science N (AGN) | Maintenance Mode | Piggyback Control | |

Observing Plan for Iofarsrv Computer MPIfR Effelsberg LOFAR Station 2013-12-01 through 2013-12-31

For any publication based on observations with the Effelsberg LOFAR station, please use the following acknowledgment: "Based on observations made with the Effelsberg LOFAR station of the Max-Planck-Institut für Radioastronomie (MPIfR) at Effelsberg."



Normal Experiment Code Markers

- 0 ELM2013-012 Kuniyoshi, Horneff
- 1 ELT2013-006C Horneffer
- 2 ELT2013-006D Horneffer
- 3 ELT2013-006E Horneffer

Other Code Markers

Color Meanings

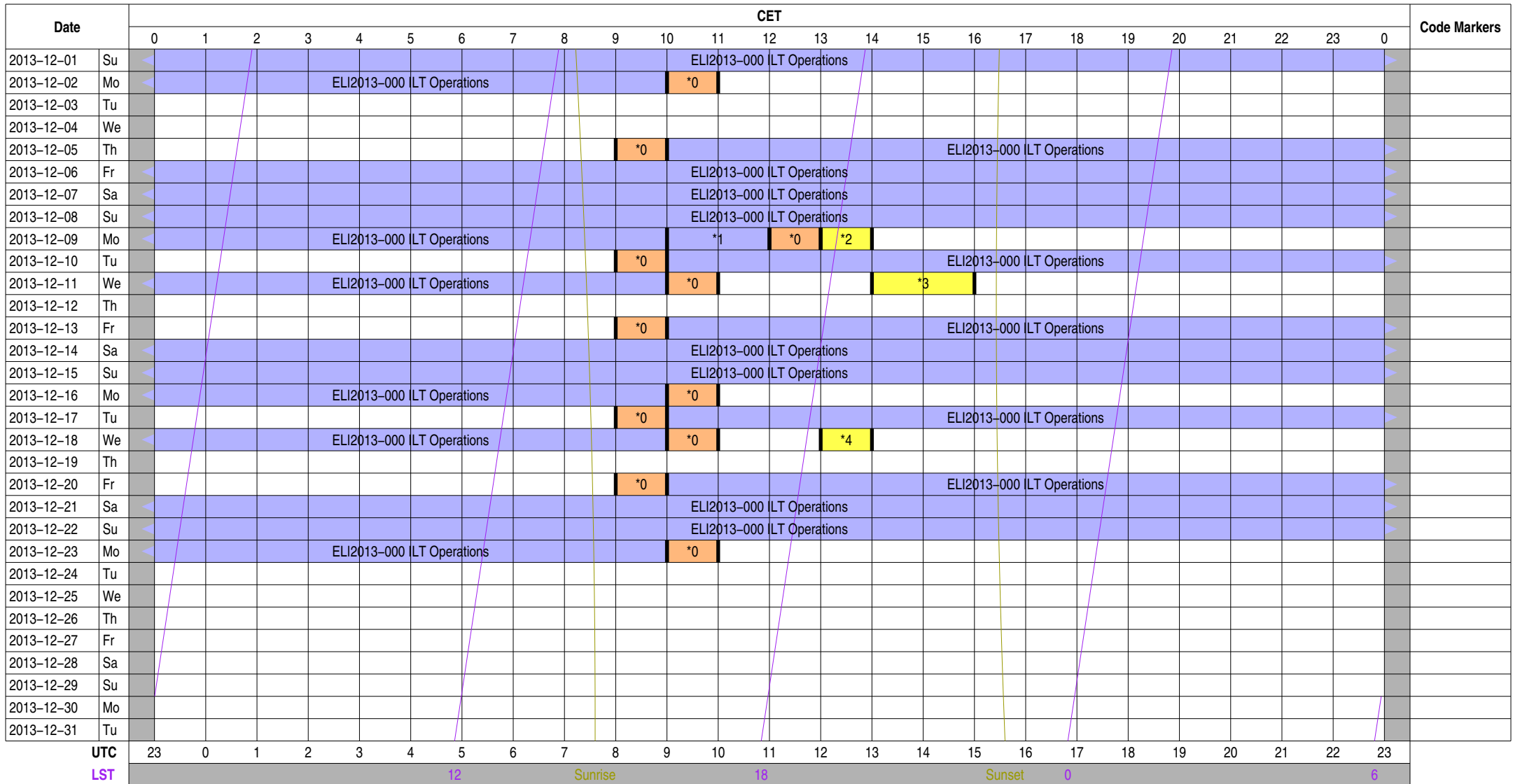
- | | | | |
|---------------------------|--------------------------|-------------------|---------------------------|
| Science A (Astrometry) | Science O (Other) | ILT Mode | Piggyback Without Control |
| Science C (Cosmology) | Science P (Pulsar) | Effelsberg Mode | Experiment Warning |
| Science E (Extragalactic) | Science R (Cosmic Rays) | GLOW Mode | Override Possible |
| Science G (Galactic) | Science S (Solar System) | Juelich Mode | |
| Science H (Ionosphere) | Test Observation | Station Failure | |
| Science N (AGN) | Maintenance Mode | Piggyback Control | |

Observing Plan for LOFAR Fiber Connection

MPIfR Effelsberg LOFAR Station

2013-12-01 through 2013-12-31

For any publication based on observations with the Effelsberg LOFAR station, please use the following acknowledgment: "Based on observations made with the Effelsberg LOFAR station of the Max-Planck-Institut für Radioastronomie (MPIfR) at Effelsberg."



Normal Experiment Code Markers

- 0 ELM2013-012 Kuniyoshi, Horneff
- 1 ELI2013-010 ILT Operations
- 2 ELT2013-006C Horneffer
- 3 ELT2013-006D Horneffer
- 4 ELT2013-006E Horneffer

Other Code Markers

Color Meanings

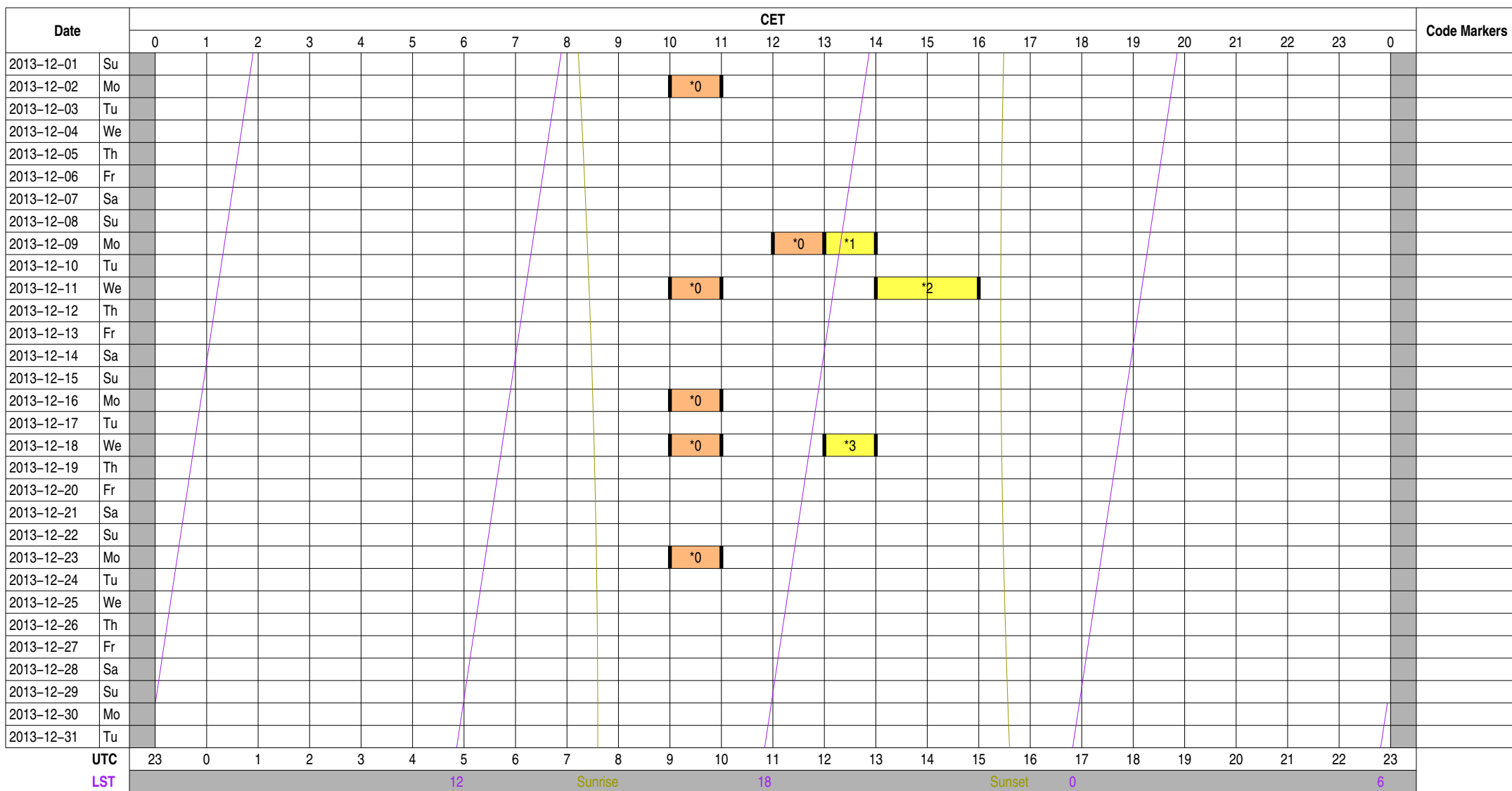
- | | | | |
|---------------------------|--------------------------|-------------------|---------------------------|
| Science A (Astrometry) | Science O (Other) | ILT Mode | Piggyback Without Control |
| Science C (Cosmology) | Science P (Pulsar) | Effelsberg Mode | Experiment Warning |
| Science E (Extragalactic) | Science R (Cosmic Rays) | GLOW Mode | Override Possible |
| Science G (Galactic) | Science S (Solar System) | Juelich Mode | |
| Science H (Ionosphere) | Test Observation | Station Failure | |
| Science N (AGN) | Maintenance Mode | Piggyback Control | |

Observing Plan for LOFAR Bonn--EF Fiber Connection

MPIfR Effelsberg LOFAR Station

2013-12-01 through 2013-12-31

For any publication based on observations with the Effelsberg LOFAR station, please use the following acknowledgment: "Based on observations made with the Effelsberg LOFAR station of the Max-Planck-Institut für Radioastronomie (MPIfR) at Effelsberg."



Normal Experiment Code Markers

- 0 ELM2013-012 Kuniyoshi, Horneff
- 1 ELT2013-006C Horneffer
- 2 ELT2013-006D Horneffer
- 3 ELT2013-006E Horneffer

Other Code Markers

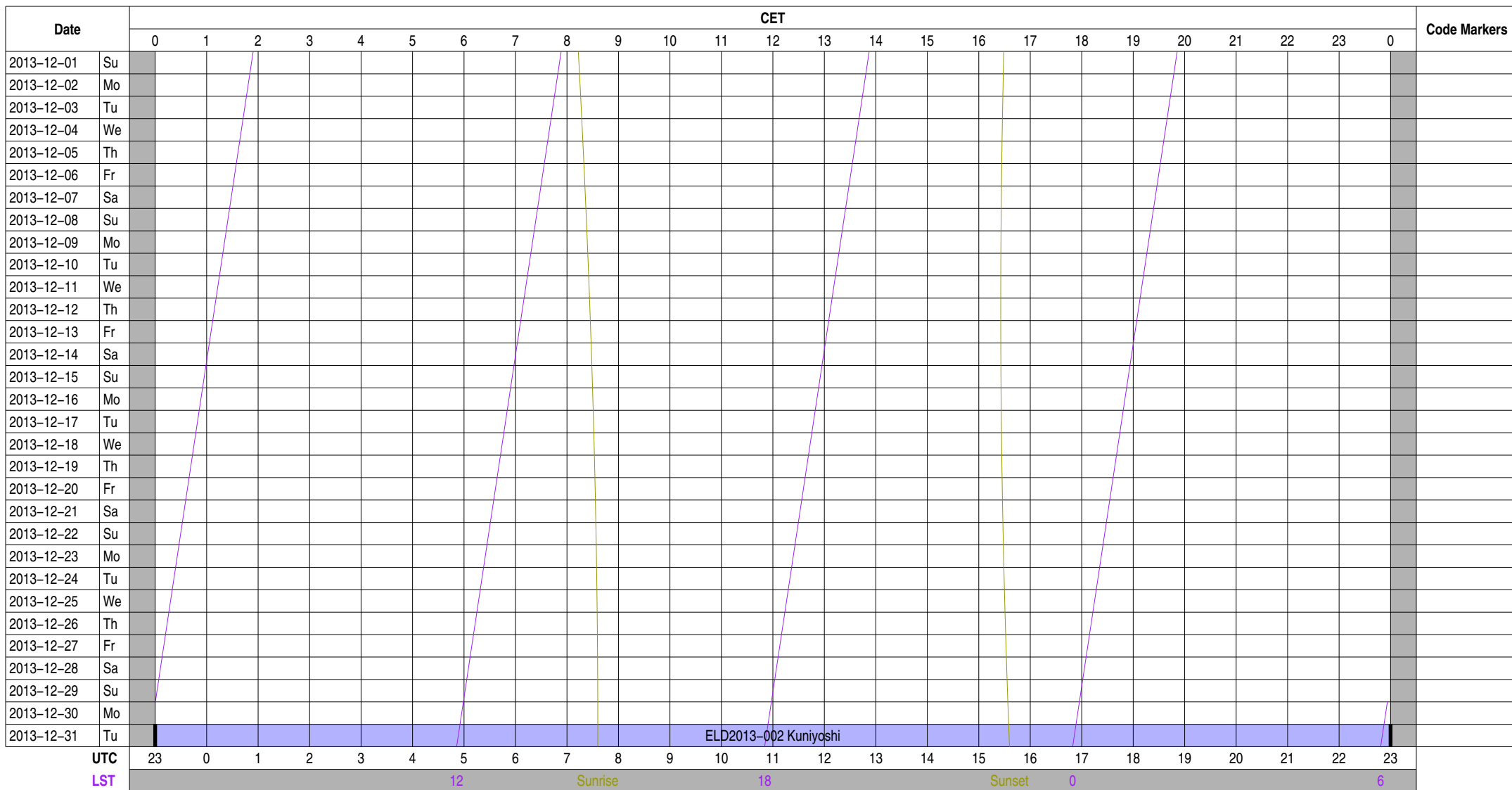
Color Meanings

- | | | | |
|---------------------------|--------------------------|-------------------|---------------------------|
| Science A (Astrometry) | Science O (Other) | ILT Mode | Piggyback Without Control |
| Science C (Cosmology) | Science P (Pulsar) | Effelsberg Mode | Experiment Warning |
| Science E (Extragalactic) | Science R (Cosmic Rays) | GLOW Mode | Override Possible |
| Science G (Galactic) | Science S (Solar System) | Juelich Mode | |
| Science H (Ionosphere) | Test Observation | Station Failure | |
| Science N (AGN) | Maintenance Mode | Piggyback Control | |

Observing Plan for Operator On-Duty

MPIfR Effelsberg LOFAR Station

2013-12-01 through 2013-12-31



Normal Experiment Code Markers

Other Code Markers

Color Meanings

- 100 m Operator
- Anderson
- Kuniyoshi
- Horneffer
- Other
- Unknown

Experiment Information for Normal Observations

ELI2013-000	ILT Operations		observer@astron.nl	+31 521 595 777	Main ILT Observations, ILT Operations only on-duty 9--17, M
ELI2013-000	ILT Operations		observer@astron.nl	+31 521 595 777	Main ILT Observations, ILT Operations only on-duty 9--17, M
ELI2013-000	ILT Operations		observer@astron.nl	+31 521 595 777	Main ILT Observations, ILT Operations only on-duty 9--17, M
ELI2013-000	ILT Operations		observer@astron.nl	+31 521 595 777	Main ILT Observations, ILT Operations only on-duty 9--17, M
ELI2013-000	ILT Operations		observer@astron.nl	+31 521 595 777	Main ILT Observations, ILT Operations only on-duty 9--17, M
ELI2013-000	ILT Operations		observer@astron.nl	+31 521 595 777	Main ILT Observations, ILT Operations only on-duty 9--17, M
ELI2013-009	Serylak, Verbiest et al.		joris.verbiest@gmail.com	+49 521 106 3184	LC1_048 Studying Pulsars and the Interstellar Medium using
ELI2013-009 C	Serylak, Verbiest et al.		joris.verbiest@gmail.com	+49 521 106 3184	LC1_048 Studying Pulsars and the Interstellar Medium using
ELI2013-009 D	Serylak, Verbiest et al.		joris.verbiest@gmail.com	+49 521 106 3184	LC1_048 Studying Pulsars and the Interstellar Medium using
ELI2013-009 E	Serylak, Verbiest et al.		joris.verbiest@gmail.com	+49 521 106 3184	LC1_048 Studying Pulsars and the Interstellar Medium using
ELI2013-009 F	Serylak, Verbiest et al.		joris.verbiest@gmail.com	+49 521 106 3184	LC1_048 Studying Pulsars and the Interstellar Medium using
ELI2013-010	ILT Operations		observer@astron.nl	+31 521 595 777	Handover to local or GLOW mode delayed
ELI2013-010	ILT Operations		observer@astron.nl	+31 521 595 777	Handover to local or GLOW mode delayed
ELM2013-012	Kuniyoshi, Horneffer, Anderson		lofar-ops@mpifr-bonn.mpg.de	+49 228 525 356	Handover operations for local to ILT mode (MPIfR time)
ELM2013-012	Kuniyoshi, Horneffer, Anderson		lofar-ops@mpifr-bonn.mpg.de	+49 228 525 356	Handover operations for local to ILT mode (MPIfR time)
ELM2013-012	Kuniyoshi, Horneffer, Anderson		lofar-ops@mpifr-bonn.mpg.de	+49 228 525 356	Handover operations for local to ILT mode (MPIfR time)
ELM2013-012	Kuniyoshi, Horneffer, Anderson		lofar-ops@mpifr-bonn.mpg.de	+49 228 525 356	Handover operations for local to ILT mode (MPIfR time)
ELM2013-012	Kuniyoshi, Horneffer, Anderson		lofar-ops@mpifr-bonn.mpg.de	+49 228 525 356	Handover operations for local to ILT mode (MPIfR time)
ELM2013-012	Kuniyoshi, Horneffer, Anderson		lofar-ops@mpifr-bonn.mpg.de	+49 228 525 356	Handover operations for local to ILT mode (MPIfR time)
ELM2013-012	Kuniyoshi, Horneffer, Anderson		lofar-ops@mpifr-bonn.mpg.de	+49 228 525 356	Handover operations for local to ILT mode (MPIfR time)
ELM2013-012	Kuniyoshi, Horneffer, Anderson		lofar-ops@mpifr-bonn.mpg.de	+49 228 525 356	Handover operations for local to ILT mode (MPIfR time)
ELM2013-012	Kuniyoshi, Horneffer, Anderson		lofar-ops@mpifr-bonn.mpg.de	+49 228 525 356	Handover operations for local to ILT mode (MPIfR time)
ELM2013-012	Kuniyoshi, Horneffer, Anderson		lofar-ops@mpifr-bonn.mpg.de	+49 228 525 356	Handover operations for local to ILT mode (MPIfR time)
ELP2012-022	Verbiest		verbiest@mpifr-bonn.mpg.de	+49 228 525 246	Assessing the Timing Potential of LOFAR for Pulsars
ELP2012-022 AN	Verbiest		verbiest@mpifr-bonn.mpg.de	+49 228 525 246	Assessing the Timing Potential of LOFAR for Pulsars
ELP2012-022 AO	Verbiest		verbiest@mpifr-bonn.mpg.de	+49 228 525 246	Assessing the Timing Potential of LOFAR for Pulsars
ELP2012-022 AP	Verbiest		verbiest@mpifr-bonn.mpg.de	+49 228 525 246	Assessing the Timing Potential of LOFAR for Pulsars
ELP2012-022 AQ	Verbiest		verbiest@mpifr-bonn.mpg.de	+49 228 525 246	Assessing the Timing Potential of LOFAR for Pulsars
ELP2012-022 AR	Verbiest		verbiest@mpifr-bonn.mpg.de	+49 228 525 246	Assessing the Timing Potential of LOFAR for Pulsars
ELP2012-022 AR	Verbiest		verbiest@mpifr-bonn.mpg.de	+49 228 525 246	Assessing the Timing Potential of LOFAR for Pulsars
ELP2012-022 AR	Verbiest		verbiest@mpifr-bonn.mpg.de	+49 228 525 246	Assessing the Timing Potential of LOFAR for Pulsars
ELP2012-022 AR	Verbiest		verbiest@mpifr-bonn.mpg.de	+49 228 525 246	Assessing the Timing Potential of LOFAR for Pulsars
ELT2013-006	Horneffer		ahorneffer@mpifr-bonn.mpg.de	+49 228 525 505	testing GLOW mode setup
ELT2013-006 C	Horneffer		ahorneffer@mpifr-bonn.mpg.de	+49 228 525 505	testing GLOW mode setup
ELT2013-006 D	Horneffer		ahorneffer@mpifr-bonn.mpg.de	+49 228 525 505	testing GLOW mode setup
ELT2013-006 E	Horneffer		ahorneffer@mpifr-bonn.mpg.de	+49 228 525 505	testing GLOW mode setup
ELX2013-002	Verbiest		verbiest@mpifr-bonn.mpg.de	+49 228 525 246	Loose fiber connector on switch S2
ELX2013-002 B	Verbiest		verbiest@mpifr-bonn.mpg.de	+49 228 525 246	Loose fiber connector on switch S2

Experiment Information for Other Actions

Experiment Information for Operator On-Duty Schedule

ELD2013-002	Kuniyoshi	mkuniyos@mpifr-bonn.mpg.de	+49 228 525 505	Project Scheduler
ELD2013-002	Kuniyoshi	mkuniyos@mpifr-bonn.mpg.de	+49 228 525 505	Project Scheduler

Time Usage [hours] for Normal Observations

Experiment Code	station	TBB	HBA	LBH	LBL	interfe	lofarAN	lofarBN	lofarx	lofarsr	fiber	BN--EF_	duty
ELI2013-000	322.00	322.00	322.00	322.00	322.00	322.00					322.00		
ELI2013-000	34.00	34.00	34.00	34.00	34.00	34.00					34.00		
ELI2013-000	96.00	96.00	96.00	96.00	96.00	96.00					96.00		
ELI2013-000	24.00	24.00	24.00	24.00	24.00	24.00					24.00		
ELI2013-000	72.00	72.00	72.00	72.00	72.00	72.00					72.00		
ELI2013-000	24.00	24.00	24.00	24.00	24.00	24.00					24.00		
ELI2013-000	72.00	72.00	72.00	72.00	72.00	72.00					72.00		
ELI2013-009	112.00		112.00									112.00	112.00
ELI2013-009 C	40.00		40.00					40.00	40.00				
ELI2013-009 D	24.00		24.00					24.00	24.00				
ELI2013-009 E	24.00		24.00					24.00	24.00				
ELI2013-009 F	24.00		24.00					24.00	24.00				
ELI2013-010	2.00	2.00	2.00	2.00	2.00	2.00					2.00		
ELI2013-010	2.00	2.00	2.00	2.00	2.00	2.00					2.00		
ELM2013-012	11.00	11.00	11.00	11.00	11.00	11.00	6.00	6.00	11.00	6.00	11.00	6.00	
ELM2013-012	1.00	1.00	1.00	1.00	1.00	1.00	1.00	1.00	1.00	1.00	1.00	1.00	1.00
ELM2013-012	1.00	1.00	1.00	1.00	1.00	1.00			1.00		1.00		
ELM2013-012	1.00	1.00	1.00	1.00	1.00	1.00	1.00	1.00	1.00	1.00	1.00	1.00	1.00
ELM2013-012	1.00	1.00	1.00	1.00	1.00	1.00	1.00	1.00	1.00	1.00	1.00	1.00	1.00
ELM2013-012	1.00	1.00	1.00	1.00	1.00	1.00	1.00	1.00	1.00	1.00	1.00	1.00	1.00
ELM2013-012	1.00	1.00	1.00	1.00	1.00	1.00	1.00	1.00	1.00	1.00	1.00	1.00	1.00
ELM2013-012	1.00	1.00	1.00	1.00	1.00	1.00	1.00	1.00	1.00	1.00	1.00	1.00	1.00
ELM2013-012	1.00	1.00	1.00	1.00	1.00	1.00	1.00	1.00	1.00	1.00	1.00	1.00	1.00
ELM2013-012	1.00	1.00	1.00	1.00	1.00	1.00	1.00	1.00	1.00	1.00	1.00	1.00	1.00
ELM2013-012	1.00	1.00	1.00	1.00	1.00	1.00	1.00	1.00	1.00	1.00	1.00	1.00	1.00
ELM2013-012	1.00	1.00	1.00	1.00	1.00	1.00	1.00	1.00	1.00	1.00	1.00	1.00	1.00
ELP2012-022	263.00		263.00									263.00	263.00
ELP2012-022 AN	19.00		19.00						19.00	19.00			
ELP2012-022 AO	3.00		3.00						3.00	3.00			
ELP2012-022 AP	17.00		17.00						17.00	17.00			
ELP2012-022 AQ	22.00		22.00						22.00	22.00			
ELP2012-022 AR	2.00		2.00						2.00	2.00			
ELP2012-022 AR	19.00		19.00						19.00	19.00			
ELP2012-022 AR	46.00		46.00						46.00	46.00			
ELP2012-022 AR	135.00		135.00						135.00	135.00			
ELT2013-006	4.00	4.00	4.00	4.00	4.00	4.00	4.00	4.00	4.00	4.00	4.00	4.00	4.00
ELT2013-006 C	1.00	1.00	1.00	1.00	1.00	1.00	1.00	1.00	1.00	1.00	1.00	1.00	1.00
ELT2013-006 D	2.00	2.00	2.00	2.00	2.00	2.00	2.00	2.00	2.00	2.00	2.00	2.00	2.00
ELT2013-006 E	1.00	1.00	1.00	1.00	1.00	1.00	1.00	1.00	1.00	1.00	1.00	1.00	1.00
ELX2013-002	30.00		30.00									30.00	30.00
ELX2013-002 B	30.00		30.00						30.00	30.00			

Time Usage [hours] for Other Actions

Experiment Code station TBB HBA LBH LBL interfe lofarAN lofarBN lofarx lofarsr fiber BN--EF_ duty

