

Observing Plan for Station Control (LCU)

MPIfR Effelsberg LOFAR Station

2013-11-01 through 2013-11-30

For any publication based on observations with the Effelsberg LOFAR station, please use the following acknowledgment: "Based on observations made with the Effelsberg LOFAR station of the Max-Planck-Institut für Radioastronomie (MPIfR) at Effelsberg."

Date	CET																								Code Markers	
	0	1	2	3	4	5	6	7	8	9	10	11	12	13	14	15	16	17	18	19	20	21	22	23		0
2013-11-01	Fr											ELI2013-000	LT Operations													
2013-11-02	Sa											ELI2013-000	LT Operations													
2013-11-03	Su											ELI2013-000	LT Operations													
2013-11-04	Mo				ELI2013-000	LT Operations					*0		*1		ELT2013-002	Wucknitz				ELP2012-022AN	Verbiest					
2013-11-05	Tu												ELP2012-022AN	Verbiest												
2013-11-06	We				ELP2012-022AN	Verbiest					*0							ELI2013-000	LT Operations							
2013-11-07	Th											ELI2013-000	LT Operations													
2013-11-08	Fr											ELI2013-000	LT Operations													
2013-11-09	Sa											ELI2013-000	LT Operations													
2013-11-10	Su											ELI2013-000	LT Operations													
2013-11-11	Mo				ELI2013-000	LT Operations					*0									ELP2012-022AN	Verbiest					
2013-11-12	Tu												ELP2012-022AN	Verbiest												
2013-11-13	We				ELP2012-022AN	Verbiest					*0								ELI2013-000	LT Operations						
2013-11-14	Th											ELI2013-000	LT Operations													
2013-11-15	Fr											ELI2013-000	LT Operations													
2013-11-16	Sa											ELI2013-000	LT Operations													
2013-11-17	Su											ELI2013-000	LT Operations													
2013-11-18	Mo				ELI2013-000	LT Operations					*0									ELP2012-022AN	Verbiest					
2013-11-19	Tu												ELP2012-022AN	Verbiest												
2013-11-20	We				ELP2012-022AN	Verbiest					*0									ELI2013-000	LT Operations					
2013-11-21	Th											ELI2013-000	LT Operations													
2013-11-22	Fr											ELI2013-000	LT Operations													
2013-11-23	Sa											ELI2013-000	LT Operations													
2013-11-24	Su											ELI2013-000	LT Operations													
2013-11-25	Mo				ELI2013-000	LT Operations					*0															
2013-11-26	Tu																									
2013-11-27	We										*0									ELI2013-000	LT Operations					
2013-11-28	Th											ELI2013-000	LT Operations													
2013-11-29	Fr											ELI2013-000	LT Operations													
2013-11-30	Sa											ELI2013-000	LT Operations													

UTC	23	0	1	2	3	4	5	6	7	8	9	10	11	12	13	14	15	16	17	18	19	20	21	22	23
LST		6							Sunrise						18		Sunset				0				

Normal Experiment Code Markers

- 0 ELM2013-012 Kuniyoshi, Horneff
- 1 ELP2012-022AN Verbiest

Other Code Markers

Color Meanings

Science A (Astrometry)	Science O (Other)	ILT Mode	Piggyback Without Control
Science C (Cosmology)	Science P (Pulsar)	Effelsberg Mode	Experiment Warning
Science E (Extragalactic)	Science R (Cosmic Rays)	GLOW Mode	Override Possible
Science G (Galactic)	Science S (Solar System)	Juelich Mode	
Science H (Ionosphere)	Test Observation	Station Failure	
Science N (AGN)	Maintenance Mode	Piggyback Control	

Observing Plan for Transient Buffer Boards

MPIfR Effelsberg LOFAR Station

2013-11-01 through 2013-11-30

For any publication based on observations with the Effelsberg LOFAR station, please use the following acknowledgment: "Based on observations made with the Effelsberg LOFAR station of the Max-Planck-Institut für Radioastronomie (MPIfR) at Effelsberg."

Date	CET																								Code Markers	
	0	1	2	3	4	5	6	7	8	9	10	11	12	13	14	15	16	17	18	19	20	21	22	23		0
2013-11-01	Fr											ELI2013-000	LT Operations													
2013-11-02	Sa											ELI2013-000	LT Operations													
2013-11-03	Su											ELI2013-000	LT Operations													
2013-11-04	Mo				ELI2013-000	LT Operations					*0															
2013-11-05	Tu																									
2013-11-06	We										*0						ELI2013-000	LT Operations								
2013-11-07	Th											ELI2013-000	LT Operations													
2013-11-08	Fr											ELI2013-000	LT Operations													
2013-11-09	Sa											ELI2013-000	LT Operations													
2013-11-10	Su											ELI2013-000	LT Operations													
2013-11-11	Mo				ELI2013-000	LT Operations					*0															
2013-11-12	Tu																									
2013-11-13	We										*0						ELI2013-000	LT Operations								
2013-11-14	Th											ELI2013-000	LT Operations													
2013-11-15	Fr											ELI2013-000	LT Operations													
2013-11-16	Sa											ELI2013-000	LT Operations													
2013-11-17	Su											ELI2013-000	LT Operations													
2013-11-18	Mo				ELI2013-000	LT Operations					*0															
2013-11-19	Tu																									
2013-11-20	We										*0						ELI2013-000	LT Operations								
2013-11-21	Th											ELI2013-000	LT Operations													
2013-11-22	Fr											ELI2013-000	LT Operations													
2013-11-23	Sa											ELI2013-000	LT Operations													
2013-11-24	Su											ELI2013-000	LT Operations													
2013-11-25	Mo				ELI2013-000	LT Operations					*0															
2013-11-26	Tu																									
2013-11-27	We										*0						ELI2013-000	LT Operations								
2013-11-28	Th											ELI2013-000	LT Operations													
2013-11-29	Fr											ELI2013-000	LT Operations													
2013-11-30	Sa											ELI2013-000	LT Operations													
UTC	23	0	1	2	3	4	5	6	7	8	9	10	11	12	13	14	15	16	17	18	19	20	21	22	23	23
LST			6												18				Sunset			0				

Normal Experiment Code Markers

0 ELM2013-012 Kuniyoshi, Horneff

Other Code Markers

Color Meanings

Science A (Astrometry)	Science O (Other)	ILT Mode	Piggyback Without Control
Science C (Cosmology)	Science P (Pulsar)	Effelsberg Mode	Experiment Warning
Science E (Extragalactic)	Science R (Cosmic Rays)	GLOW Mode	Override Possible
Science G (Galactic)	Science S (Solar System)	Juelich Mode	
Science H (Ionosphere)	Test Observation	Station Failure	
Science N (AGN)	Maintenance Mode	Piggyback Control	

Observing Plan for HBA MPIfR Effelsberg LOFAR Station 2013-11-01 through 2013-11-30

For any publication based on observations with the Effelsberg LOFAR station, please use the following acknowledgment: "Based on observations made with the Effelsberg LOFAR station of the Max-Planck-Institut für Radioastronomie (MPIfR) at Effelsberg."

Date	CET																								Code Markers	
	0	1	2	3	4	5	6	7	8	9	10	11	12	13	14	15	16	17	18	19	20	21	22	23		0
2013-11-01	Fr											ELI2013-000	LT Operations													
2013-11-02	Sa											ELI2013-000	LT Operations													
2013-11-03	Su											ELI2013-000	LT Operations													
2013-11-04	Mo				ELI2013-000	LT Operations					*0		*1		ELT2013-002	Wucknitz				ELP2012-022AN	Verbiest					
2013-11-05	Tu												ELP2012-022AN	Verbiest												
2013-11-06	We				ELP2012-022AN	Verbiest					*0							ELI2013-000	LT Operations							
2013-11-07	Th											ELI2013-000	LT Operations													
2013-11-08	Fr											ELI2013-000	LT Operations													
2013-11-09	Sa											ELI2013-000	LT Operations													
2013-11-10	Su											ELI2013-000	LT Operations													
2013-11-11	Mo				ELI2013-000	LT Operations					*0									ELP2012-022AN	Verbiest					
2013-11-12	Tu												ELP2012-022AN	Verbiest												
2013-11-13	We				ELP2012-022AN	Verbiest					*0								ELI2013-000	LT Operations						
2013-11-14	Th											ELI2013-000	LT Operations													
2013-11-15	Fr											ELI2013-000	LT Operations													
2013-11-16	Sa											ELI2013-000	LT Operations													
2013-11-17	Su											ELI2013-000	LT Operations													
2013-11-18	Mo				ELI2013-000	LT Operations					*0									ELP2012-022AN	Verbiest					
2013-11-19	Tu												ELP2012-022AN	Verbiest												
2013-11-20	We				ELP2012-022AN	Verbiest					*0									ELI2013-000	LT Operations					
2013-11-21	Th											ELI2013-000	LT Operations													
2013-11-22	Fr											ELI2013-000	LT Operations													
2013-11-23	Sa											ELI2013-000	LT Operations													
2013-11-24	Su											ELI2013-000	LT Operations													
2013-11-25	Mo				ELI2013-000	LT Operations					*0															
2013-11-26	Tu																									
2013-11-27	We										*0									ELI2013-000	LT Operations					
2013-11-28	Th											ELI2013-000	LT Operations													
2013-11-29	Fr											ELI2013-000	LT Operations													
2013-11-30	Sa											ELI2013-000	LT Operations													

UTC	23	0	1	2	3	4	5	6	7	8	9	10	11	12	13	14	15	16	17	18	19	20	21	22	23
LST		6							Sunrise						18		Sunset				0				

Normal Experiment Code Markers

- 0 ELM2013-012 Kuniyoshi, Horneff
- 1 ELP2012-022AN Verbiest

Other Code Markers

Color Meanings

Science A (Astrometry)	Science O (Other)	ILT Mode	Piggyback Without Control
Science C (Cosmology)	Science P (Pulsar)	Effelsberg Mode	Experiment Warning
Science E (Extragalactic)	Science R (Cosmic Rays)	GLOW Mode	Override Possible
Science G (Galactic)	Science S (Solar System)	Juelich Mode	
Science H (Ionosphere)	Test Observation	Station Failure	
Science N (AGN)	Maintenance Mode	Piggyback Control	

Observing Plan for Low Band High (LBA) MPIfR Effelsberg LOFAR Station 2013-11-01 through 2013-11-30

For any publication based on observations with the Effelsberg LOFAR station, please use the following acknowledgment: "Based on observations made with the Effelsberg LOFAR station of the Max-Planck-Institut für Radioastronomie (MPIfR) at Effelsberg."

Date	CET																								Code Markers	
	0	1	2	3	4	5	6	7	8	9	10	11	12	13	14	15	16	17	18	19	20	21	22	23		0
2013-11-01	Fr											ELI2013-000	LT Operations													
2013-11-02	Sa											ELI2013-000	LT Operations													
2013-11-03	Su											ELI2013-000	LT Operations													
2013-11-04	Mo				ELI2013-000	LT Operations					*0															
2013-11-05	Tu																									
2013-11-06	We										*0						ELI2013-000	LT Operations								
2013-11-07	Th											ELI2013-000	LT Operations													
2013-11-08	Fr											ELI2013-000	LT Operations													
2013-11-09	Sa											ELI2013-000	LT Operations													
2013-11-10	Su											ELI2013-000	LT Operations													
2013-11-11	Mo				ELI2013-000	LT Operations					*0															
2013-11-12	Tu																									
2013-11-13	We										*0						ELI2013-000	LT Operations								
2013-11-14	Th											ELI2013-000	LT Operations													
2013-11-15	Fr											ELI2013-000	LT Operations													
2013-11-16	Sa											ELI2013-000	LT Operations													
2013-11-17	Su											ELI2013-000	LT Operations													
2013-11-18	Mo				ELI2013-000	LT Operations					*0															
2013-11-19	Tu																									
2013-11-20	We										*0						ELI2013-000	LT Operations								
2013-11-21	Th											ELI2013-000	LT Operations													
2013-11-22	Fr											ELI2013-000	LT Operations													
2013-11-23	Sa											ELI2013-000	LT Operations													
2013-11-24	Su											ELI2013-000	LT Operations													
2013-11-25	Mo				ELI2013-000	LT Operations					*0															
2013-11-26	Tu																									
2013-11-27	We										*0						ELI2013-000	LT Operations								
2013-11-28	Th											ELI2013-000	LT Operations													
2013-11-29	Fr											ELI2013-000	LT Operations													
2013-11-30	Sa											ELI2013-000	LT Operations													

UTC	23	0	1	2	3	4	5	6	7	8	9	10	11	12	13	14	15	16	17	18	19	20	21	22	23
LST		6							Sunrise						18		Sunset				0				

Normal Experiment Code Markers

0 ELM2013-012 Kuniyoshi, Horneff

Other Code Markers

Color Meanings

Science A (Astrometry)	Science O (Other)	ILT Mode	Piggyback Without Control
Science C (Cosmology)	Science P (Pulsar)	Effelsberg Mode	Experiment Warning
Science E (Extragalactic)	Science R (Cosmic Rays)	GLOW Mode	Override Possible
Science G (Galactic)	Science S (Solar System)	Juelich Mode	
Science H (Ionosphere)	Test Observation	Station Failure	
Science N (AGN)	Maintenance Mode	Piggyback Control	

Observing Plan for Low Band Low, Unused Inputs

MPIfR Effelsberg LOFAR Station

2013-11-01 through 2013-11-30

For any publication based on observations with the Effelsberg LOFAR station, please use the following acknowledgment: "Based on observations made with the Effelsberg LOFAR station of the Max-Planck-Institut für Radioastronomie (MPIfR) at Effelsberg."

Date	CET																								Code Markers	
	0	1	2	3	4	5	6	7	8	9	10	11	12	13	14	15	16	17	18	19	20	21	22	23		0
2013-11-01	Fr											ELI2013-000	LT Operations													
2013-11-02	Sa											ELI2013-000	LT Operations													
2013-11-03	Su											ELI2013-000	LT Operations													
2013-11-04	Mo				ELI2013-000	LT Operations					*0															
2013-11-05	Tu																									
2013-11-06	We									*0							ELI2013-000	LT Operations								
2013-11-07	Th											ELI2013-000	LT Operations													
2013-11-08	Fr											ELI2013-000	LT Operations													
2013-11-09	Sa											ELI2013-000	LT Operations													
2013-11-10	Su											ELI2013-000	LT Operations													
2013-11-11	Mo				ELI2013-000	LT Operations					*0															
2013-11-12	Tu																									
2013-11-13	We										*0						ELI2013-000	LT Operations								
2013-11-14	Th											ELI2013-000	LT Operations													
2013-11-15	Fr											ELI2013-000	LT Operations													
2013-11-16	Sa											ELI2013-000	LT Operations													
2013-11-17	Su											ELI2013-000	LT Operations													
2013-11-18	Mo				ELI2013-000	LT Operations					*0															
2013-11-19	Tu																									
2013-11-20	We										*0						ELI2013-000	LT Operations								
2013-11-21	Th											ELI2013-000	LT Operations													
2013-11-22	Fr											ELI2013-000	LT Operations													
2013-11-23	Sa											ELI2013-000	LT Operations													
2013-11-24	Su											ELI2013-000	LT Operations													
2013-11-25	Mo				ELI2013-000	LT Operations					*0															
2013-11-26	Tu																									
2013-11-27	We											*0					ELI2013-000	LT Operations								
2013-11-28	Th											ELI2013-000	LT Operations													
2013-11-29	Fr											ELI2013-000	LT Operations													
2013-11-30	Sa											ELI2013-000	LT Operations													

UTC	23	0	1	2	3	4	5	6	7	8	9	10	11	12	13	14	15	16	17	18	19	20	21	22	23
LST		6							Sunrise						18		Sunset				0				

Normal Experiment Code Markers

0 ELM2013-012 Kuniyoshi, Horneff

Other Code Markers

Color Meanings

Science A (Astrometry)	Science O (Other)	ILT Mode	Piggyback Without Control
Science C (Cosmology)	Science P (Pulsar)	Effelsberg Mode	Experiment Warning
Science E (Extragalactic)	Science R (Cosmic Rays)	GLOW Mode	Override Possible
Science G (Galactic)	Science S (Solar System)	Juelich Mode	
Science H (Ionosphere)	Test Observation	Station Failure	
Science N (AGN)	Maintenance Mode	Piggyback Control	

Observing Plan for Station Interferometer

MPIfR Effelsberg LOFAR Station

2013-11-01 through 2013-11-30

For any publication based on observations with the Effelsberg LOFAR station, please use the following acknowledgment: "Based on observations made with the Effelsberg LOFAR station of the Max-Planck-Institut für Radioastronomie (MPIfR) at Effelsberg."

Date	CET																								Code Markers	
	0	1	2	3	4	5	6	7	8	9	10	11	12	13	14	15	16	17	18	19	20	21	22	23		0
2013-11-01	Fr											ELI2013-000	LT Operations													
2013-11-02	Sa											ELI2013-000	LT Operations													
2013-11-03	Su											ELI2013-000	LT Operations													
2013-11-04	Mo				ELI2013-000	LT Operations					*0															
2013-11-05	Tu																									
2013-11-06	We									*0							ELI2013-000	LT Operations								
2013-11-07	Th											ELI2013-000	LT Operations													
2013-11-08	Fr											ELI2013-000	LT Operations													
2013-11-09	Sa											ELI2013-000	LT Operations													
2013-11-10	Su											ELI2013-000	LT Operations													
2013-11-11	Mo				ELI2013-000	LT Operations					*0															
2013-11-12	Tu																									
2013-11-13	We										*0						ELI2013-000	LT Operations								
2013-11-14	Th											ELI2013-000	LT Operations													
2013-11-15	Fr											ELI2013-000	LT Operations													
2013-11-16	Sa											ELI2013-000	LT Operations													
2013-11-17	Su											ELI2013-000	LT Operations													
2013-11-18	Mo				ELI2013-000	LT Operations					*0															
2013-11-19	Tu																									
2013-11-20	We											*0					ELI2013-000	LT Operations								
2013-11-21	Th											ELI2013-000	LT Operations													
2013-11-22	Fr											ELI2013-000	LT Operations													
2013-11-23	Sa											ELI2013-000	LT Operations													
2013-11-24	Su											ELI2013-000	LT Operations													
2013-11-25	Mo				ELI2013-000	LT Operations					*0															
2013-11-26	Tu																									
2013-11-27	We											*0					ELI2013-000	LT Operations								
2013-11-28	Th											ELI2013-000	LT Operations													
2013-11-29	Fr											ELI2013-000	LT Operations													
2013-11-30	Sa											ELI2013-000	LT Operations													

UTC	23	0	1	2	3	4	5	6	7	8	9	10	11	12	13	14	15	16	17	18	19	20	21	22	23
LST		6							Sunrise					18	Sunset					0					

Normal Experiment Code Markers

0 ELM2013-012 Kuniyoshi, Horneff

Other Code Markers

Color Meanings

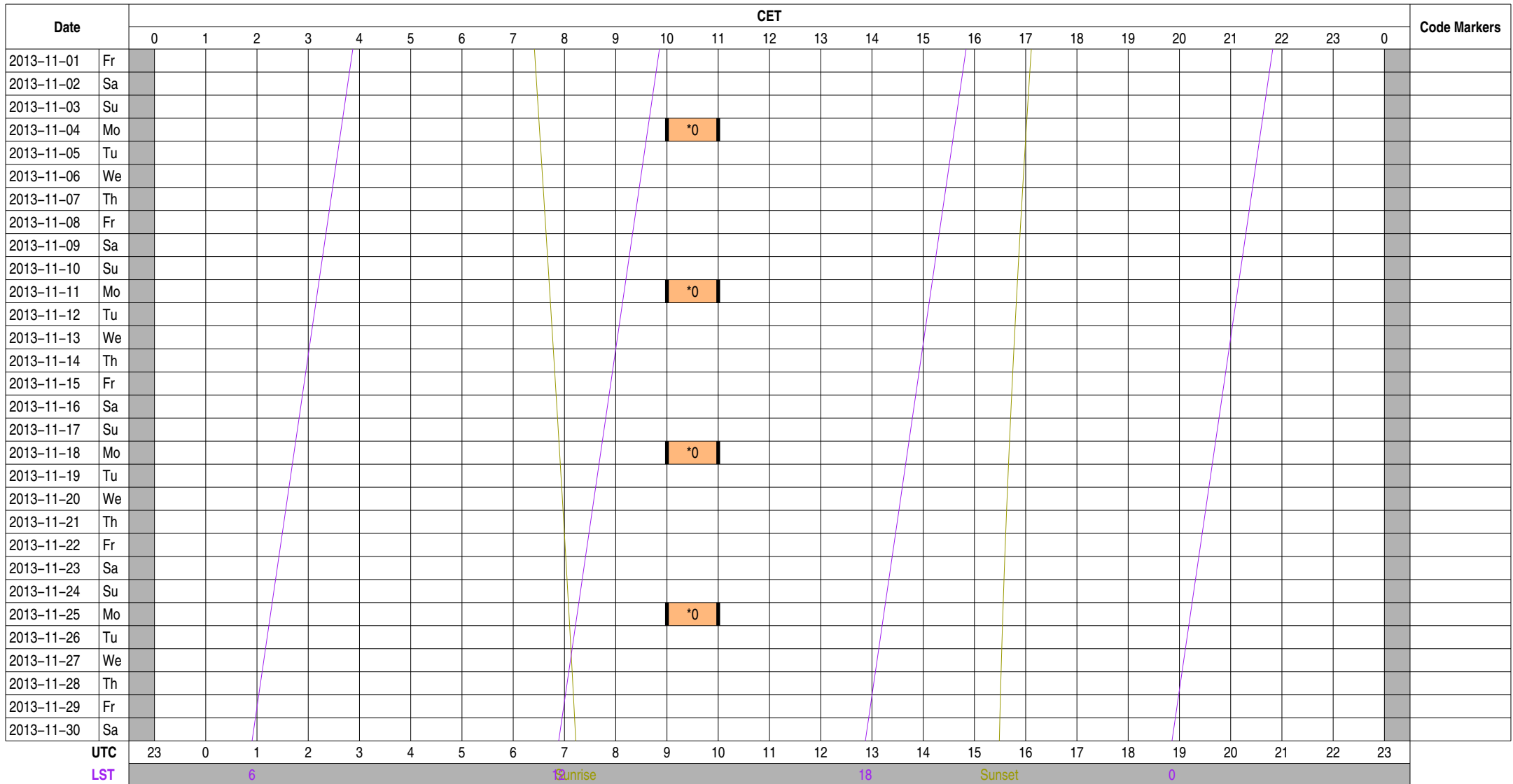
Science A (Astrometry)	Science O (Other)	ILT Mode	Piggyback Without Control
Science C (Cosmology)	Science P (Pulsar)	Effelsberg Mode	Experiment Warning
Science E (Extragalactic)	Science R (Cosmic Rays)	GLOW Mode	Override Possible
Science G (Galactic)	Science S (Solar System)	Juelich Mode	
Science H (Ionosphere)	Test Observation	Station Failure	
Science N (AGN)	Maintenance Mode	Piggyback Control	

Observing Plan for IofarAN Computers

MPIfR Effelsberg LOFAR Station

2013-11-01 through 2013-11-30

For any publication based on observations with the Effelsberg LOFAR station, please use the following acknowledgment: "Based on observations made with the Effelsberg LOFAR station of the Max-Planck-Institut für Radioastronomie (MPIfR) at Effelsberg."



Normal Experiment Code Markers

0 ELM2013-012 Kuniyoshi, Horneff

Other Code Markers

Color Meanings

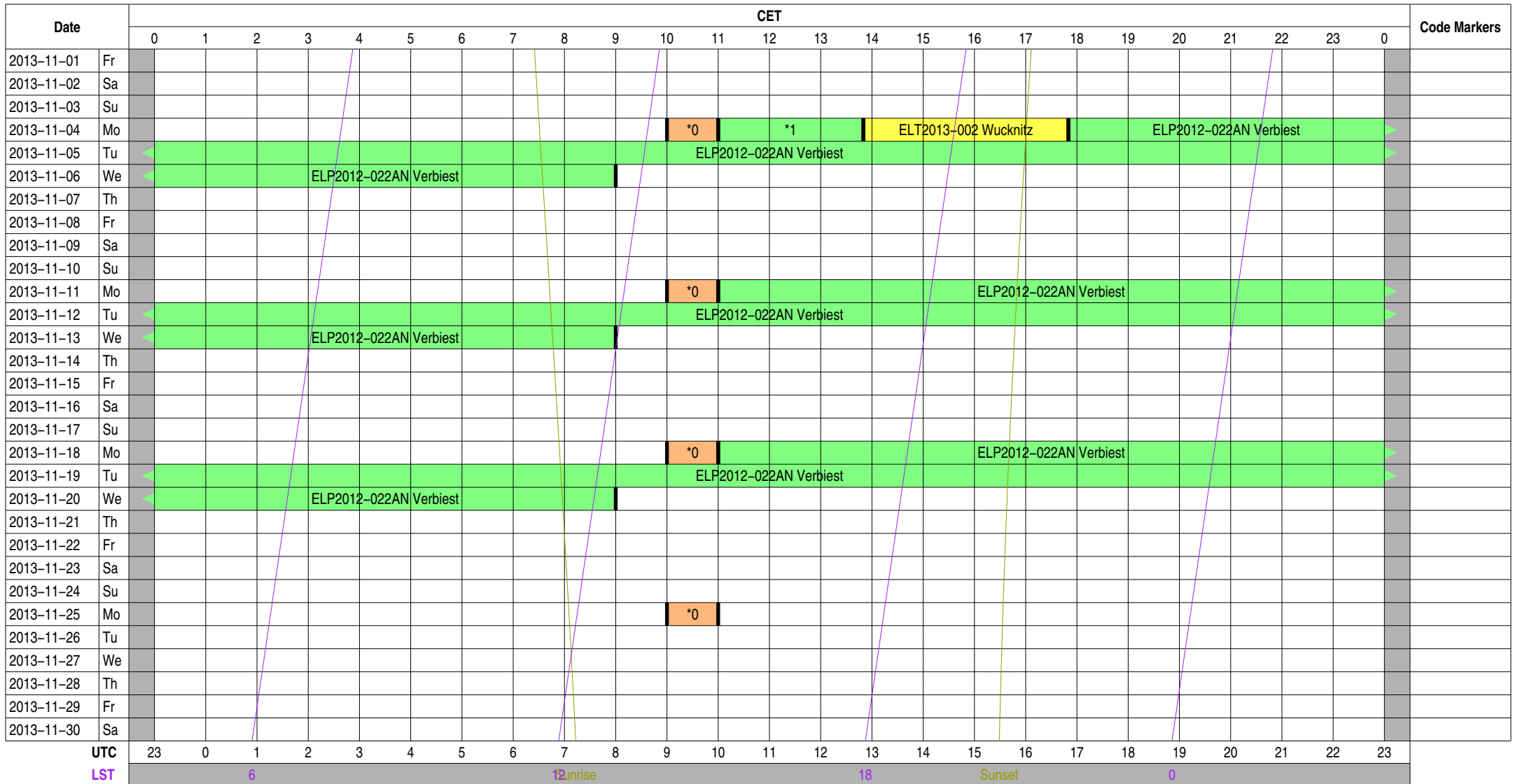
Science A (Astrometry)	Science O (Other)	ILT Mode	Piggyback Without Control
Science C (Cosmology)	Science P (Pulsar)	Effelsberg Mode	Experiment Warning
Science E (Extragalactic)	Science R (Cosmic Rays)	GLOW Mode	Override Possible
Science G (Galactic)	Science S (Solar System)	Juelich Mode	
Science H (Ionosphere)	Test Observation	Station Failure	
Science N (AGN)	Maintenance Mode	Piggyback Control	

Observing Plan for IofarBN Computers

MPIfR Effelsberg LOFAR Station

2013-11-01 through 2013-11-30

For any publication based on observations with the Effelsberg LOFAR station, please use the following acknowledgment: "Based on observations made with the Effelsberg LOFAR station of the Max-Planck-Institut für Radioastronomie (MPIfR) at Effelsberg."



Normal Experiment Code Markers

- 0 ELM2013-012 Kuniyoshi, Horneff
- 1 ELP2012-022AN Verbiest

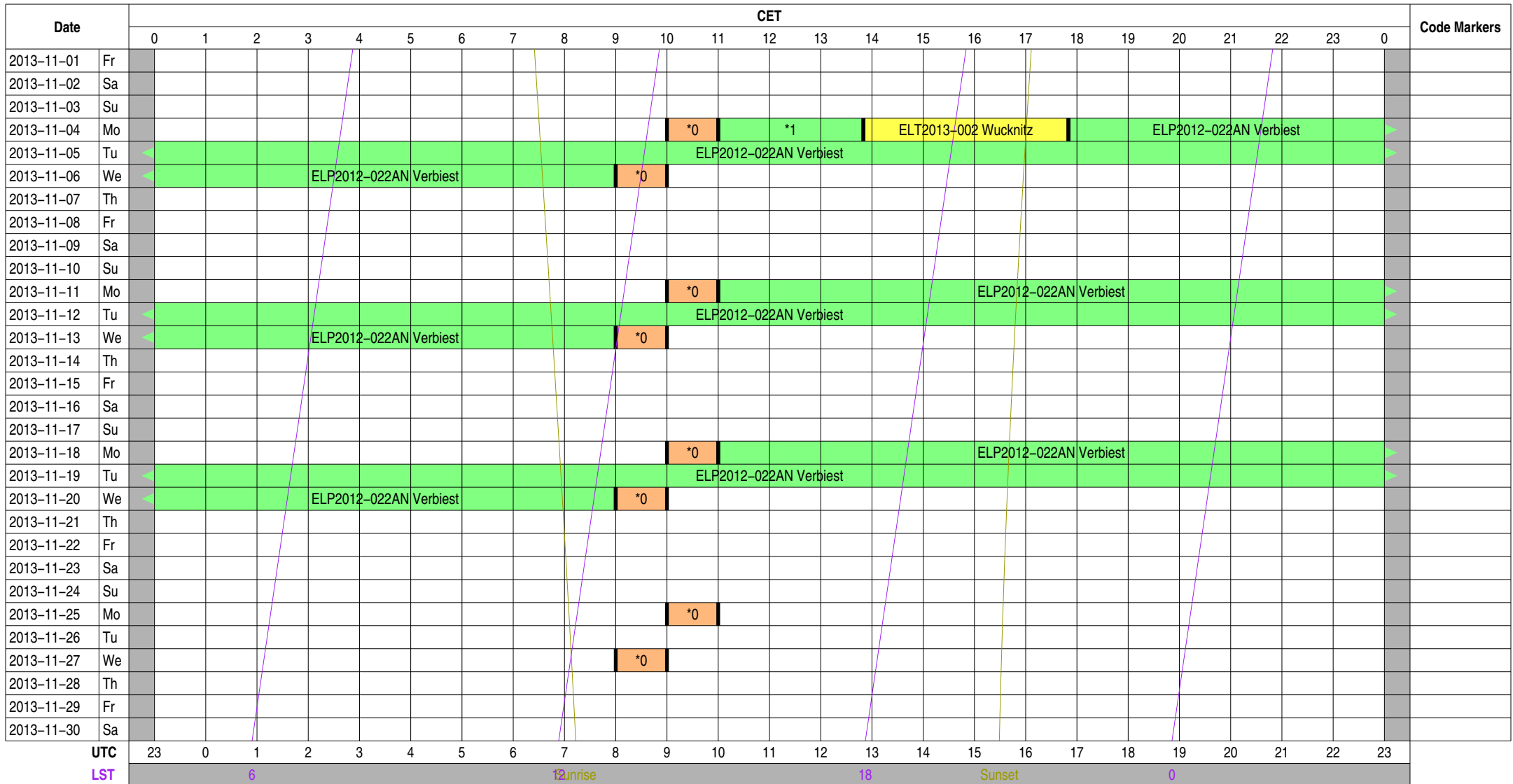
Other Code Markers

Color Meanings

- | | | | |
|---------------------------|--------------------------|-------------------|---------------------------|
| Science A (Astrometry) | Science O (Other) | ILT Mode | Piggyback Without Control |
| Science C (Cosmology) | Science P (Pulsar) | Effelsberg Mode | Experiment Warning |
| Science E (Extragalactic) | Science R (Cosmic Rays) | GLOW Mode | Override Possible |
| Science G (Galactic) | Science S (Solar System) | Juelich Mode | |
| Science H (Ionosphere) | Test Observation | Station Failure | |
| Science N (AGN) | Maintenance Mode | Piggyback Control | |

Observing Plan for lofarx Computer MPIfR Effelsberg LOFAR Station 2013-11-01 through 2013-11-30

For any publication based on observations with the Effelsberg LOFAR station, please use the following acknowledgment: "Based on observations made with the Effelsberg LOFAR station of the Max-Planck-Institut für Radioastronomie (MPIfR) at Effelsberg."



Normal Experiment Code Markers

- 0 ELM2013-012 Kuniyoshi, Horneff
- 1 ELP2012-022AN Verbiest

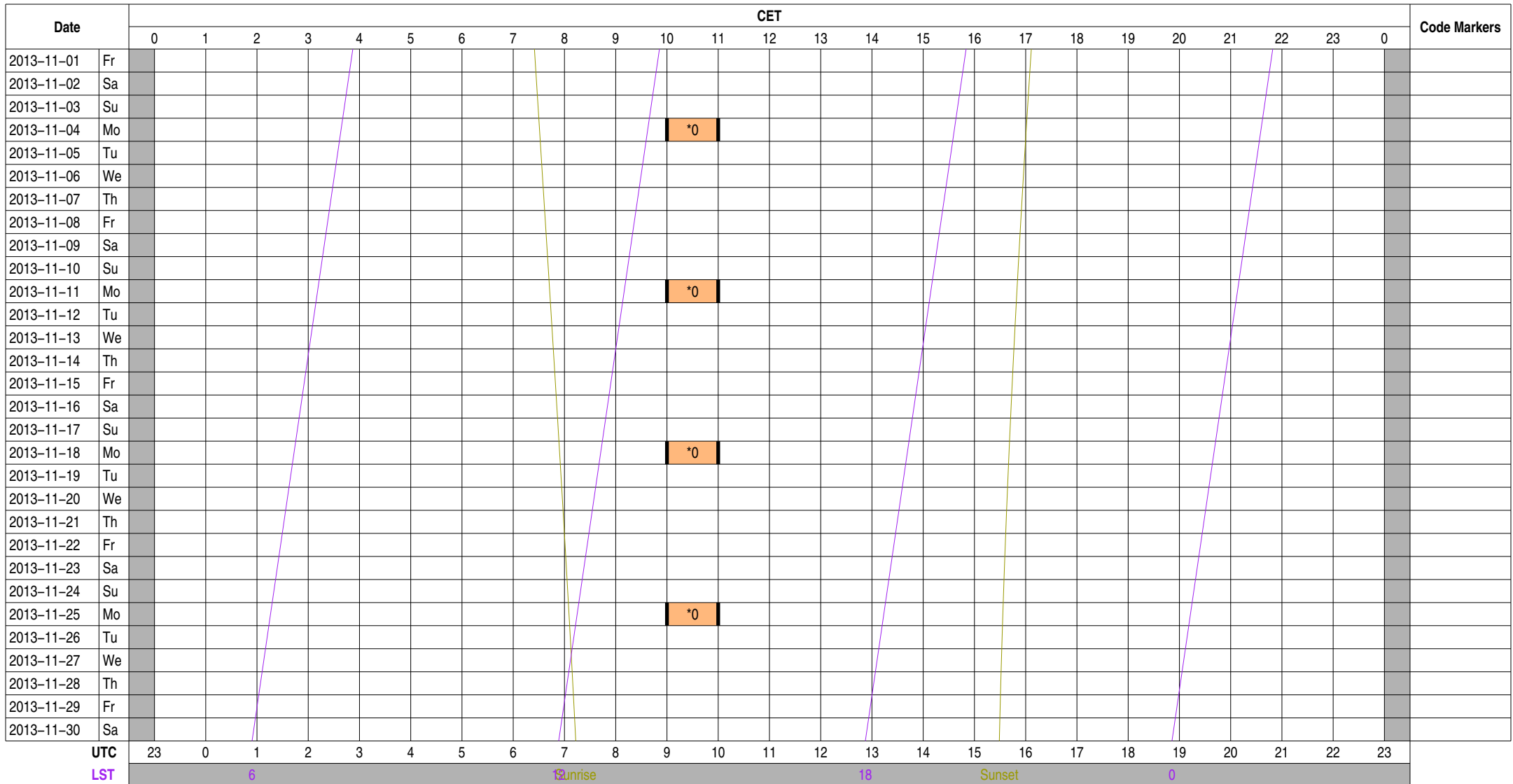
Other Code Markers

Color Meanings

- | | | | |
|---------------------------|--------------------------|-------------------|---------------------------|
| Science A (Astrometry) | Science O (Other) | ILT Mode | Piggyback Without Control |
| Science C (Cosmology) | Science P (Pulsar) | Effelsberg Mode | Experiment Warning |
| Science E (Extragalactic) | Science R (Cosmic Rays) | GLOW Mode | Override Possible |
| Science G (Galactic) | Science S (Solar System) | Juelich Mode | |
| Science H (Ionosphere) | Test Observation | Station Failure | |
| Science N (AGN) | Maintenance Mode | Piggyback Control | |

Observing Plan for Iofarsrv Computer MPIfR Effelsberg LOFAR Station 2013-11-01 through 2013-11-30

For any publication based on observations with the Effelsberg LOFAR station, please use the following acknowledgment: "Based on observations made with the Effelsberg LOFAR station of the Max-Planck-Institut für Radioastronomie (MPIfR) at Effelsberg."



Normal Experiment Code Markers

0 ELM2013-012 Kuniyoshi, Horneff

Other Code Markers

Color Meanings

Science A (Astrometry)	Science O (Other)	ILT Mode	Piggyback Without Control
Science C (Cosmology)	Science P (Pulsar)	Effelsberg Mode	Experiment Warning
Science E (Extragalactic)	Science R (Cosmic Rays)	GLOW Mode	Override Possible
Science G (Galactic)	Science S (Solar System)	Juelich Mode	
Science H (Ionosphere)	Test Observation	Station Failure	
Science N (AGN)	Maintenance Mode	Piggyback Control	

Observing Plan for LOFAR Fiber Connection

MPIfR Effelsberg LOFAR Station

2013-11-01 through 2013-11-30

For any publication based on observations with the Effelsberg LOFAR station, please use the following acknowledgment: "Based on observations made with the Effelsberg LOFAR station of the Max-Planck-Institut für Radioastronomie (MPIfR) at Effelsberg."

Date	CET																								Code Markers	
	0	1	2	3	4	5	6	7	8	9	10	11	12	13	14	15	16	17	18	19	20	21	22	23		0
2013-11-01	Fr											ELI2013-000	LT Operations													
2013-11-02	Sa											ELI2013-000	LT Operations													
2013-11-03	Su											ELI2013-000	LT Operations													
2013-11-04	Mo				ELI2013-000	LT Operations					*0															
2013-11-05	Tu																									
2013-11-06	We										*0						ELI2013-000	LT Operations								
2013-11-07	Th											ELI2013-000	LT Operations													
2013-11-08	Fr											ELI2013-000	LT Operations													
2013-11-09	Sa											ELI2013-000	LT Operations													
2013-11-10	Su											ELI2013-000	LT Operations													
2013-11-11	Mo				ELI2013-000	LT Operations					*0															
2013-11-12	Tu																									
2013-11-13	We										*0						ELI2013-000	LT Operations								
2013-11-14	Th											ELI2013-000	LT Operations													
2013-11-15	Fr											ELI2013-000	LT Operations													
2013-11-16	Sa											ELI2013-000	LT Operations													
2013-11-17	Su											ELI2013-000	LT Operations													
2013-11-18	Mo				ELI2013-000	LT Operations					*0															
2013-11-19	Tu																									
2013-11-20	We										*0						ELI2013-000	LT Operations								
2013-11-21	Th											ELI2013-000	LT Operations													
2013-11-22	Fr											ELI2013-000	LT Operations													
2013-11-23	Sa											ELI2013-000	LT Operations													
2013-11-24	Su											ELI2013-000	LT Operations													
2013-11-25	Mo				ELI2013-000	LT Operations					*0															
2013-11-26	Tu																									
2013-11-27	We										*0						ELI2013-000	LT Operations								
2013-11-28	Th											ELI2013-000	LT Operations													
2013-11-29	Fr											ELI2013-000	LT Operations													
2013-11-30	Sa											ELI2013-000	LT Operations													

UTC	23	0	1	2	3	4	5	6	7	8	9	10	11	12	13	14	15	16	17	18	19	20	21	22	23
LST		6							Sunrise						18		Sunset				0				

Normal Experiment Code Markers

0 ELM2013-012 Kuniyoshi, Horneff

Other Code Markers

Color Meanings

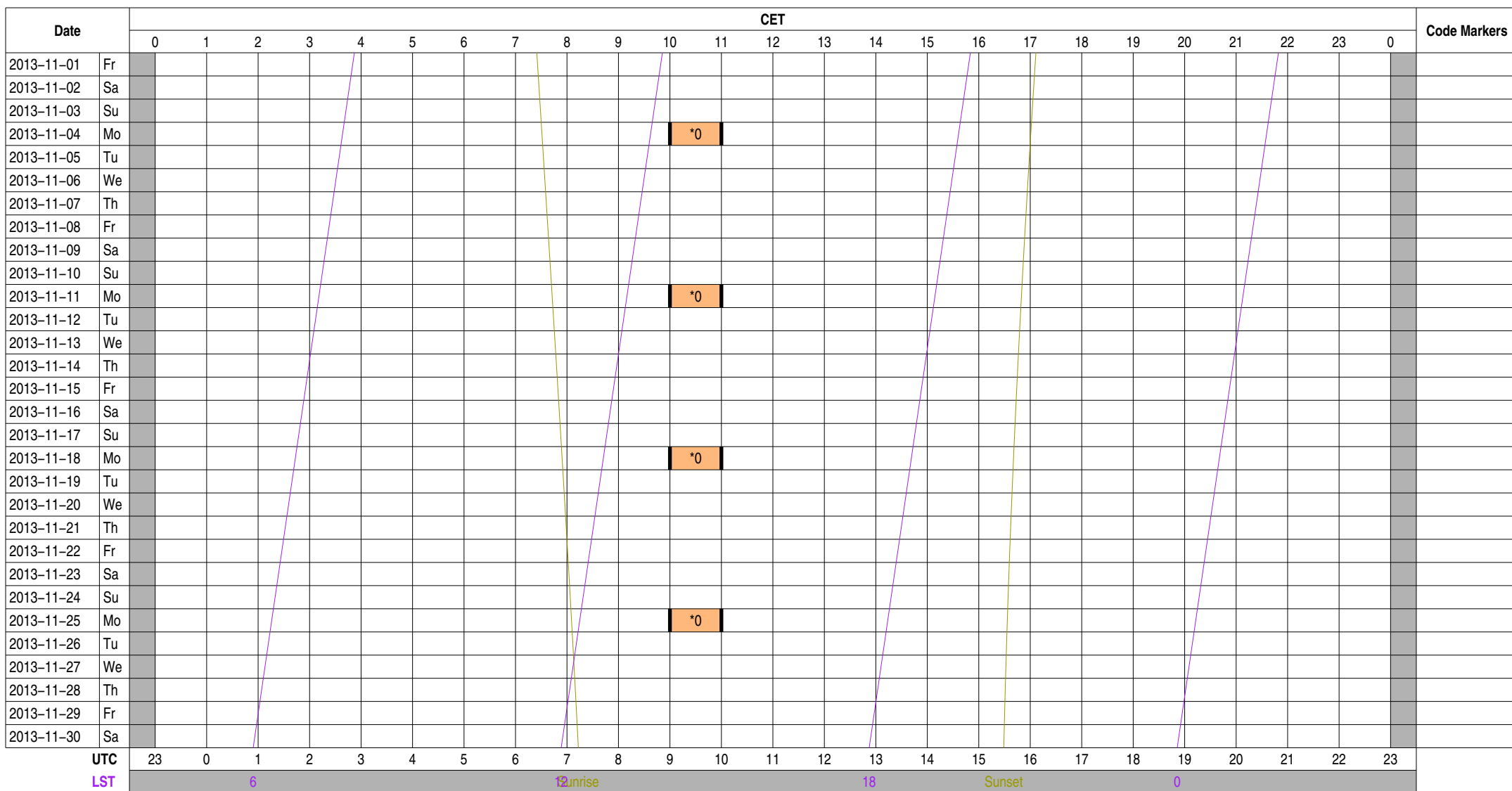
Science A (Astrometry)	Science O (Other)	ILT Mode	Piggyback Without Control
Science C (Cosmology)	Science P (Pulsar)	Effelsberg Mode	Experiment Warning
Science E (Extragalactic)	Science R (Cosmic Rays)	GLOW Mode	Override Possible
Science G (Galactic)	Science S (Solar System)	Juelich Mode	
Science H (Ionosphere)	Test Observation	Station Failure	
Science N (AGN)	Maintenance Mode	Piggyback Control	

Observing Plan for LOFAR Bonn--EF Fiber Connection

MPIfR Effelsberg LOFAR Station

2013-11-01 through 2013-11-30

For any publication based on observations with the Effelsberg LOFAR station, please use the following acknowledgment: "Based on observations made with the Effelsberg LOFAR station of the Max-Planck-Institut für Radioastronomie (MPIfR) at Effelsberg."



Normal Experiment Code Markers

0 ELM2013-012 Kuniyoshi, Horneff

Other Code Markers

Color Meanings

Science A (Astrometry)	Science O (Other)	ILT Mode	Piggyback Without Control
Science C (Cosmology)	Science P (Pulsar)	Effelsberg Mode	Experiment Warning
Science E (Extragalactic)	Science R (Cosmic Rays)	GLOW Mode	Override Possible
Science G (Galactic)	Science S (Solar System)	Juelich Mode	
Science H (Ionosphere)	Test Observation	Station Failure	
Science N (AGN)	Maintenance Mode	Piggyback Control	

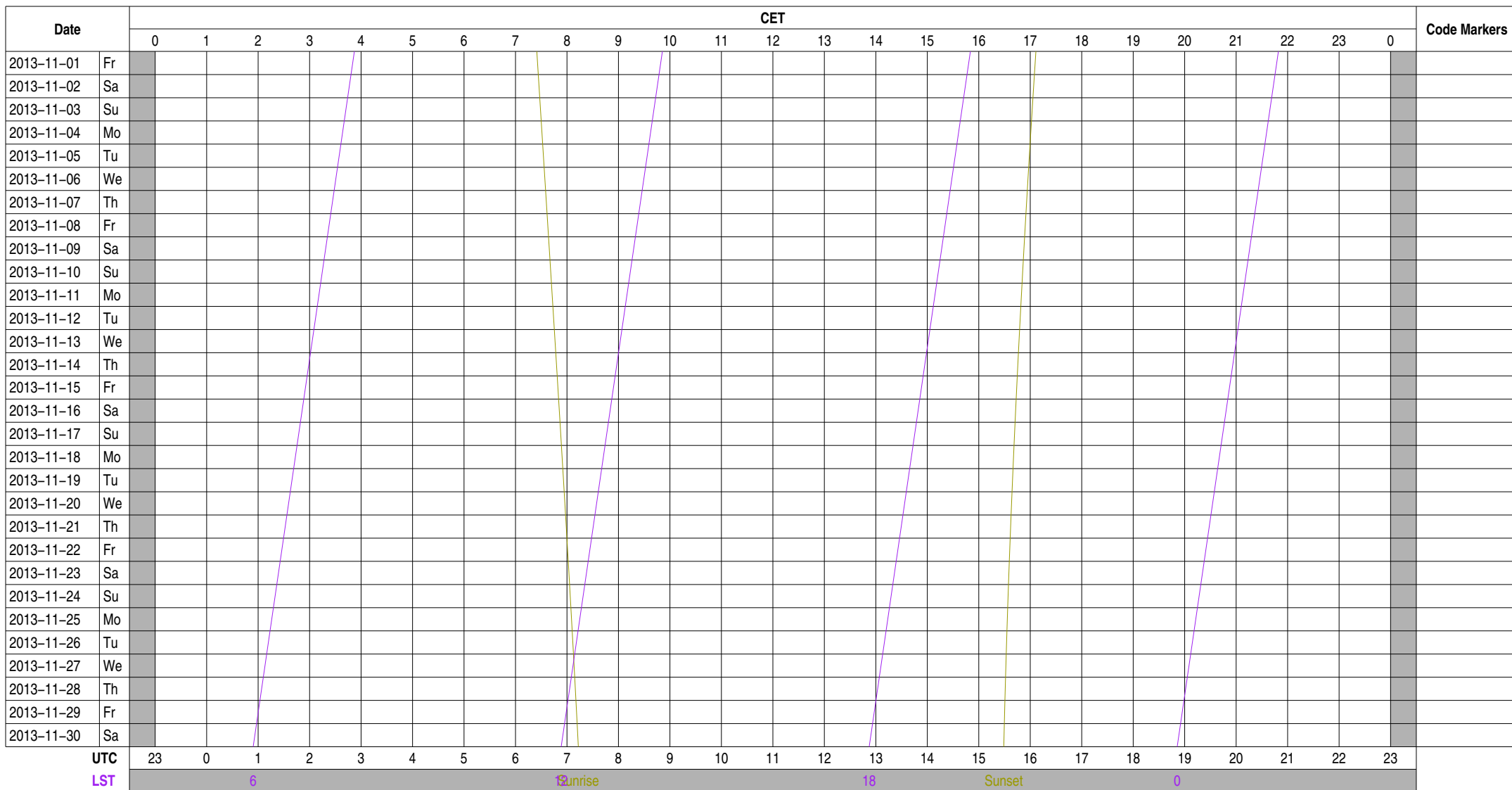
Version: draft
 Creation Date: 2013-11-14T11:04:58.308060Z
 Operator Telephone: +49 2257 301 155
 Web Page: https://deki.mpifr-bonn.mpg.de/Cooperations/LOFAR/Effelsberg_LOFAR_Schedule

Observing Plan for Operator On-Duty

MPIfR Effelsberg LOFAR Station

2013-11-01 through 2013-11-30

For any publication based on observations with the Effelsberg LOFAR station, please use the following acknowledgment: "Based on observations made with the Effelsberg LOFAR station of the Max-Planck-Institut für Radioastronomie (MPIfR) at Effelsberg."



Normal Experiment Code Markers

Other Code Markers

Color Meanings

- 100 m Operator
- Anderson
- Kuniyoshi
- Horneffer
- Other
- Unknown

Experiment Information for Normal Observations

ELI2013-000	ILT Operations	observer@astron.nl	+31 521 595 777	Main ILT Observations, ILT Operations only on-duty 9--17, M
ELI2013-000	ILT Operations	observer@astron.nl	+31 521 595 777	Main ILT Observations, ILT Operations only on-duty 9--17, M
ELI2013-000	ILT Operations	observer@astron.nl	+31 521 595 777	Main ILT Observations, ILT Operations only on-duty 9--17, M
ELI2013-000	ILT Operations	observer@astron.nl	+31 521 595 777	Main ILT Observations, ILT Operations only on-duty 9--17, M
ELI2013-000	ILT Operations	observer@astron.nl	+31 521 595 777	Main ILT Observations, ILT Operations only on-duty 9--17, M
ELM2013-012	Kuniyoshi, Horneffer, Anderson	lofar-ops@mpi-fr-bonn.mpg.de	+49 228 525 356	Handover operations for local to ILT mode (MPIFR time)
ELM2013-012	Kuniyoshi, Horneffer, Anderson	lofar-ops@mpi-fr-bonn.mpg.de	+49 228 525 356	Handover operations for local to ILT mode (MPIFR time)
ELM2013-012	Kuniyoshi, Horneffer, Anderson	lofar-ops@mpi-fr-bonn.mpg.de	+49 228 525 356	Handover operations for local to ILT mode (MPIFR time)
ELM2013-012	Kuniyoshi, Horneffer, Anderson	lofar-ops@mpi-fr-bonn.mpg.de	+49 228 525 356	Handover operations for local to ILT mode (MPIFR time)
ELM2013-012	Kuniyoshi, Horneffer, Anderson	lofar-ops@mpi-fr-bonn.mpg.de	+49 228 525 356	Handover operations for local to ILT mode (MPIFR time)
ELM2013-012	Kuniyoshi, Horneffer, Anderson	lofar-ops@mpi-fr-bonn.mpg.de	+49 228 525 356	Handover operations for local to ILT mode (MPIFR time)
ELM2013-012	Kuniyoshi, Horneffer, Anderson	lofar-ops@mpi-fr-bonn.mpg.de	+49 228 525 356	Handover operations for local to ILT mode (MPIFR time)
ELM2013-012	Kuniyoshi, Horneffer, Anderson	lofar-ops@mpi-fr-bonn.mpg.de	+49 228 525 356	Handover operations for local to ILT mode (MPIFR time)
ELP2012-022	Verbiest	verbiest@mpi-fr-bonn.mpg.de	+49 228 525 246	Assessing the Timing Potential of LOFAR for Pulsars
ELP2012-022 AN	Verbiest	verbiest@mpi-fr-bonn.mpg.de	+49 228 525 246	Assessing the Timing Potential of LOFAR for Pulsars
ELP2012-022 AN	Verbiest	verbiest@mpi-fr-bonn.mpg.de	+49 228 525 246	Assessing the Timing Potential of LOFAR for Pulsars
ELP2012-022 AN	Verbiest	verbiest@mpi-fr-bonn.mpg.de	+49 228 525 246	Assessing the Timing Potential of LOFAR for Pulsars
ELP2012-022 AN	Verbiest	verbiest@mpi-fr-bonn.mpg.de	+49 228 525 246	Assessing the Timing Potential of LOFAR for Pulsars
ELT2013-002	Wucknitz	wucknitz@mpi-fr-bonn.mpg.de	73-1772	testing TBB subband mode and station calibration
ELT2013-002	Wucknitz	wucknitz@mpi-fr-bonn.mpg.de	73-1772	testing TBB subband mode and station calibration

Experiment Information for Other Actions

Experiment Information for Operator On-Duty Schedule

Time Usage [hours] for Normal Observations

Experiment Code	station	TBB	HBA	LBH	LBL	interfe	lofarAN	lofarBN	lofarx	lofarsr	fiber	BN--EF_	duty
ELI2013-000	528.00	528.00	528.00	528.00	528.00	528.00					528.00		
ELI2013-000	82.00	82.00	82.00	82.00	82.00	82.00					82.00		
ELI2013-000	120.00	120.00	120.00	120.00	120.00	120.00					120.00		
ELI2013-000	120.00	120.00	120.00	120.00	120.00	120.00					120.00		
ELI2013-000	120.00	120.00	120.00	120.00	120.00	120.00					120.00		
ELI2013-000	86.00	86.00	86.00	86.00	86.00	86.00					86.00		
ELM2013-012	8.00	8.00	8.00	8.00	8.00	8.00	4.00	4.00	8.00	4.00	8.00	4.00	
ELM2013-012	1.00	1.00	1.00	1.00	1.00	1.00	1.00	1.00	1.00	1.00	1.00	1.00	1.00
ELM2013-012	1.00	1.00	1.00	1.00	1.00	1.00			1.00		1.00		
ELM2013-012	1.00	1.00	1.00	1.00	1.00	1.00	1.00	1.00	1.00	1.00	1.00	1.00	1.00
ELM2013-012	1.00	1.00	1.00	1.00	1.00	1.00			1.00		1.00		
ELM2013-012	1.00	1.00	1.00	1.00	1.00	1.00	1.00	1.00	1.00	1.00	1.00	1.00	1.00
ELM2013-012	1.00	1.00	1.00	1.00	1.00	1.00	1.00	1.00	1.00	1.00	1.00	1.00	1.00
ELM2013-012	1.00	1.00	1.00	1.00	1.00	1.00			1.00		1.00		
ELP2012-022	134.00		134.00					134.00	134.00				
ELP2012-022 AN	2.83		2.83					2.83	2.83				
ELP2012-022 AN	39.17		39.17					39.17	39.17				
ELP2012-022 AN	46.00		46.00					46.00	46.00				
ELP2012-022 AN	46.00		46.00					46.00	46.00				
ELT2013-002	4.00		4.00					4.00	4.00				
ELT2013-002	4.00		4.00					4.00	4.00				

Time Usage [hours] for Other Actions

Experiment Code	station	TBB	HBA	LBH	LBL	interfe	lofarAN	lofarBN	lofarx	lofarsr	fiber	BN--EF_	duty
-----------------	---------	-----	-----	-----	-----	---------	---------	---------	--------	---------	-------	---------	------

Time Usage [hours] for Operator On-Duty Schedule

Experiment Code

station

TBB

HBA

LBH

LBL

interfe

lofarAN

lofarBN

lofarx

lofarsr

fiber

BN--EF_

duty

