

Observing Plan for Station Control (LCU)

MPIfR Effelsberg LOFAR Station

2013-10-01 through 2013-10-30

For any publication based on observations with the Effelsberg LOFAR station, please use the following acknowledgment: "Based on observations made with the Effelsberg LOFAR station of the Max-Planck-Institut für Radioastronomie (MPIfR) at Effelsberg."

Date	CEST																								Code Markers						
	0	1	2	3	4	5	6	7	8	9	10	11	12	13	14	15	16	17	18	19	20	21	22	23		0					
2013-10-01	Tu	ELP2012-022AN Verbiest																													
2013-10-02	We	ELP2012-022AN Verbiest										*0	ELI2013-000 ILT Operations																		
2013-10-03	Th	ELI2013-000 LT Operations																													
2013-10-04	Fr	ELI2013-000 LT Operations																													
2013-10-05	Sa	ELI2013-000 LT Operations																													
2013-10-06	Su	ELI2013-000 LT Operations																													
2013-10-07	Mo	ELI2013-000 LT Operations																													
2013-10-08	Tu	ELI2013-000 ILT Operations										*0	ELP2012-022AN Verbiest																		
2013-10-09	We	ELP2012-022AN Verbiest																													
2013-10-10	Th	ELP2012-022AN Verbiest										*0	ELI2013-000 ILT Operations																		
2013-10-11	Fr	ELI2013-000 LT Operations																													
2013-10-12	Sa	ELI2013-000 LT Operations																													
2013-10-13	Su	ELI2013-000 LT Operations																													
2013-10-14	Mo	ELI2013-000 LT Operations																													
2013-10-15	Tu	ELI2013-000 ILT Operations										*0	ELP2012-022AN Verbiest																		
2013-10-16	We	ELP2012-022AN Verbiest																													
2013-10-17	Th	ELP2012-022AN Verbiest										*0	ELI2013-000 ILT Operations				*0	ELP2012-022AN Verbiest													
2013-10-18	Fr	ELP2012-022AN Verbiest																													
2013-10-19	Sa	ELP2012-022AN Verbiest																													
2013-10-20	Su	ELP2012-022AN Verbiest																													
2013-10-21	Mo	ELP2012-022AN Verbiest											ELG2013-001 Koehler et al.																		
2013-10-22	Tu	ELG2013-001 Koehler et al.											ELP2012-022AN Verbiest																		
2013-10-23	We	ELP2012-022AN Verbiest										*0	ELI2013-000 ILT Operations																		
2013-10-24	Th	ELI2013-000 ILT Operations																													
2013-10-25	Fr	ELI2013-000 ILT Operations																													
2013-10-26	Sa	ELI2013-000 ILT Operations																													
2013-10-27	Su	ELI2013-000 ILT Operations																													
2013-10-28	Mo	ELI2013-000 ILT Operations										*0	*1	*2	ELP2012-022AN Verbiest																
2013-10-29	Tu	ELP2012-022AN Verbiest																													
2013-10-30	We	ELP2012-022AN Verbiest										*0	ELI2013-000 ILT Operations																		
2013-10-31	Th	ELI2013-000 ILT Operations																													

UTC	22	23	0	1	2	3	4	5	6	7	8	9	10	11	12	13	14	15	16	17	18	19	20	21	22
LST						6			Sunrise		12							18	Sunset					0	

Normal Experiment Code Markers

- 0 ELM2013-012 Kuniyoshi, Horneff
- 1 ELP2012-022AN Verbiest
- 2 ELT2013-002 Wucknitz

Other Code Markers

Color Meanings

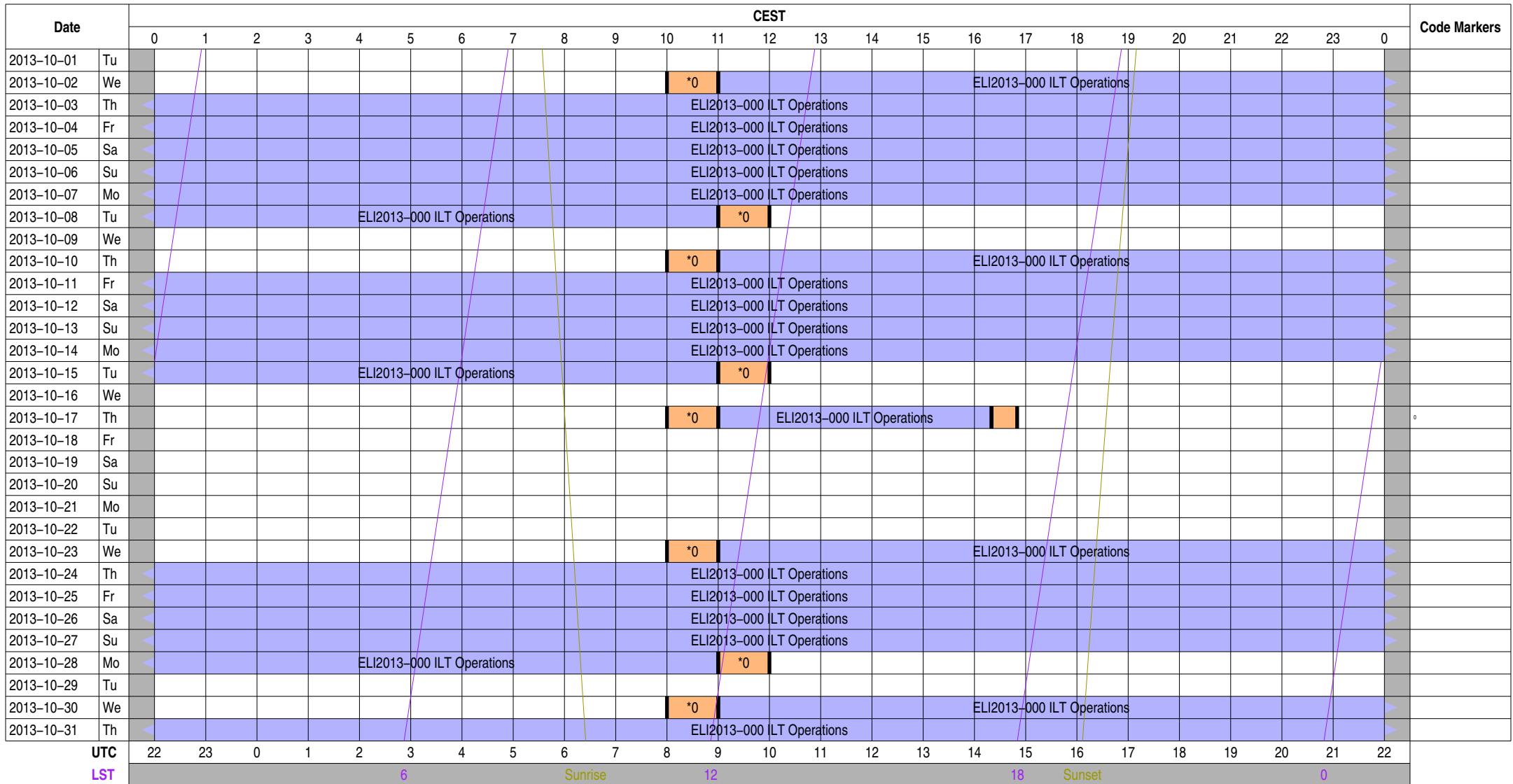
- | | | | |
|---------------------------|--------------------------|-------------------|---------------------------|
| Science A (Astrometry) | Science O (Other) | ILT Mode | Piggyback Without Control |
| Science C (Cosmology) | Science P (Pulsar) | Effelsberg Mode | Experiment Warning |
| Science E (Extragalactic) | Science R (Cosmic Rays) | GLOW Mode | Override Possible |
| Science G (Galactic) | Science S (Solar System) | Juelich Mode | |
| Science H (Ionosphere) | Test Observation | Station Failure | |
| Science N (AGN) | Maintenance Mode | Piggyback Control | |

Observing Plan for Transient Buffer Boards

MPIfR Effelsberg LOFAR Station

2013-10-01 through 2013-10-30

For any publication based on observations with the Effelsberg LOFAR station, please use the following acknowledgment: "Based on observations made with the Effelsberg LOFAR station of the Max-Planck-Institut für Radioastronomie (MPIfR) at Effelsberg."



Normal Experiment Code Markers

0 ELM2013-012 Kuniyoshi, Horneff

Other Code Markers

Color Meanings

Science A (Astrometry)	Science O (Other)	ILT Mode	Piggyback Without Control
Science C (Cosmology)	Science P (Pulsar)	Effelsberg Mode	Experiment Warning
Science E (Extragalactic)	Science R (Cosmic Rays)	GLOW Mode	Override Possible
Science G (Galactic)	Science S (Solar System)	Juelich Mode	
Science H (Ionosphere)	Test Observation	Station Failure	
Science N (AGN)	Maintenance Mode	Piggyback Control	

Observing Plan for HBA MPIfR Effelsberg LOFAR Station 2013-10-01 through 2013-10-30

For any publication based on observations with the Effelsberg LOFAR station, please use the following acknowledgment: "Based on observations made with the Effelsberg LOFAR station of the Max-Planck-Institut für Radioastronomie (MPIfR) at Effelsberg."

Date	CEST																								Code Markers						
	0	1	2	3	4	5	6	7	8	9	10	11	12	13	14	15	16	17	18	19	20	21	22	23		0					
2013-10-01	Tu	ELP2012-022AN Verbiest																													
2013-10-02	We	ELP2012-022AN Verbiest										*0	ELI2013-000 ILT Operations																		
2013-10-03	Th	ELI2013-000 LT Operations																													
2013-10-04	Fr	ELI2013-000 LT Operations																													
2013-10-05	Sa	ELI2013-000 LT Operations																													
2013-10-06	Su	ELI2013-000 LT Operations																													
2013-10-07	Mo	ELI2013-000 LT Operations																													
2013-10-08	Tu	ELI2013-000 ILT Operations										*0	ELP2012-022AN Verbiest																		
2013-10-09	We	ELP2012-022AN Verbiest																													
2013-10-10	Th	ELP2012-022AN Verbiest										*0	ELI2013-000 ILT Operations																		
2013-10-11	Fr	ELI2013-000 LT Operations																													
2013-10-12	Sa	ELI2013-000 LT Operations																													
2013-10-13	Su	ELI2013-000 LT Operations																													
2013-10-14	Mo	ELI2013-000 LT Operations																													
2013-10-15	Tu	ELI2013-000 ILT Operations										*0	ELP2012-022AN Verbiest																		
2013-10-16	We	ELP2012-022AN Verbiest																													
2013-10-17	Th	ELP2012-022AN Verbiest										*0	ELI2013-000 ILT Operations				*0	ELP2012-022AN Verbiest													
2013-10-18	Fr	ELP2012-022AN Verbiest																													
2013-10-19	Sa	ELP2012-022AN Verbiest																													
2013-10-20	Su	ELP2012-022AN Verbiest																													
2013-10-21	Mo	ELP2012-022AN Verbiest											ELG2013-001 Koehler et al.																		
2013-10-22	Tu	ELG2013-001 Koehler et al.											ELP2012-022AN Verbiest																		
2013-10-23	We	ELP2012-022AN Verbiest										*0	ELI2013-000 ILT Operations																		
2013-10-24	Th	ELI2013-000 ILT Operations																													
2013-10-25	Fr	ELI2013-000 ILT Operations																													
2013-10-26	Sa	ELI2013-000 ILT Operations																													
2013-10-27	Su	ELI2013-000 ILT Operations																													
2013-10-28	Mo	ELI2013-000 ILT Operations										*0	*1	*2	ELP2012-022AN Verbiest																
2013-10-29	Tu	ELP2012-022AN Verbiest																													
2013-10-30	We	ELP2012-022AN Verbiest										*0	ELI2013-000 ILT Operations																		
2013-10-31	Th	ELI2013-000 ILT Operations																													

UTC	22	23	0	1	2	3	4	5	6	7	8	9	10	11	12	13	14	15	16	17	18	19	20	21	22											
LST	6						Sunrise						12						18						Sunset						0					

Normal Experiment Code Markers

- 0 ELM2013-012 Kuniyoshi, Horneff
- 1 ELP2012-022AN Verbiest
- 2 ELT2013-002 Wucknitz

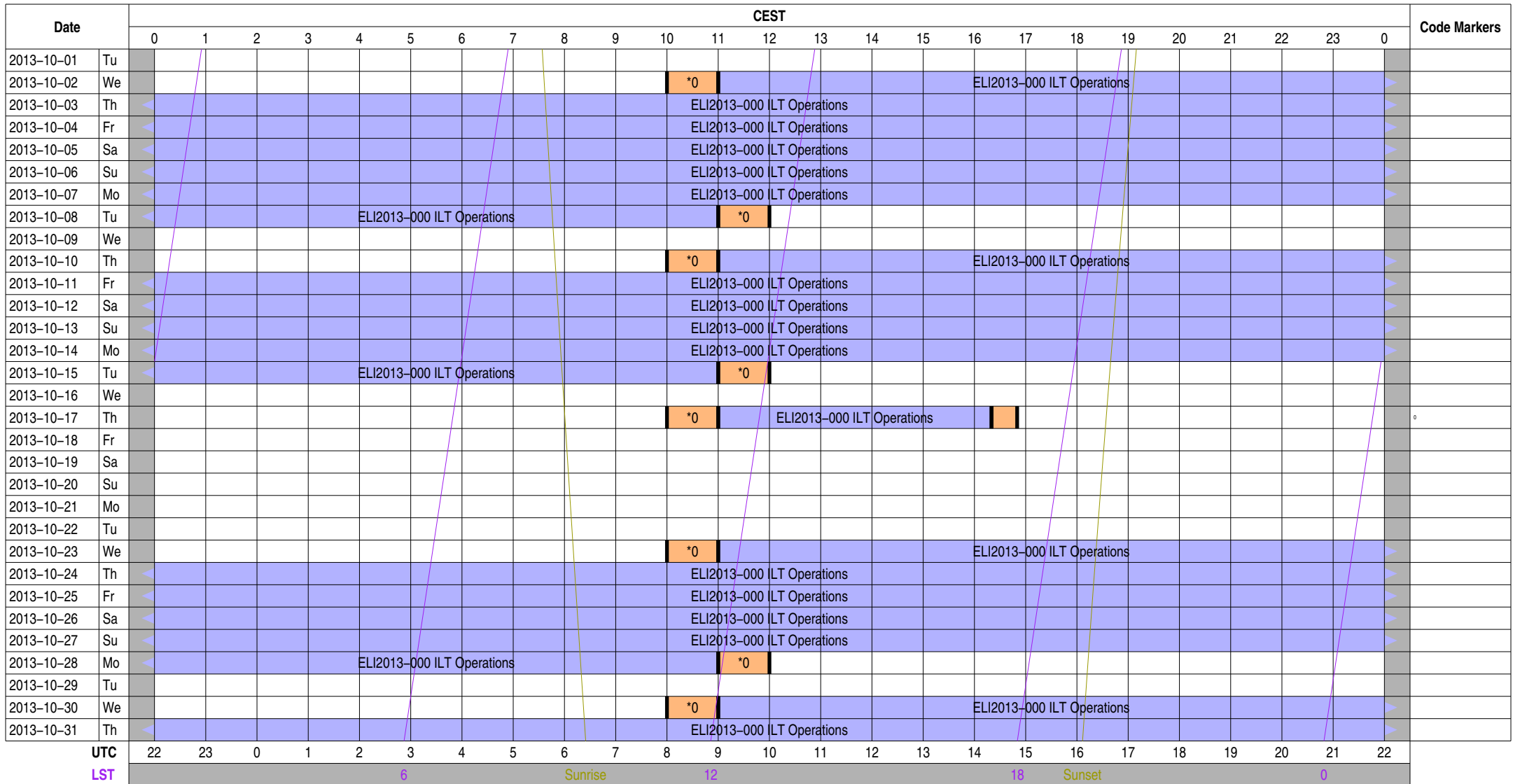
Other Code Markers

Color Meanings

- | | | | |
|---------------------------|--------------------------|-------------------|---------------------------|
| Science A (Astrometry) | Science O (Other) | ILT Mode | Piggyback Without Control |
| Science C (Cosmology) | Science P (Pulsar) | Effelsberg Mode | Experiment Warning |
| Science E (Extragalactic) | Science R (Cosmic Rays) | GLOW Mode | Override Possible |
| Science G (Galactic) | Science S (Solar System) | Juelich Mode | |
| Science H (Ionosphere) | Test Observation | Station Failure | |
| Science N (AGN) | Maintenance Mode | Piggyback Control | |

Observing Plan for Low Band High (LBA) MPIfR Effelsberg LOFAR Station 2013-10-01 through 2013-10-30

For any publication based on observations with the Effelsberg LOFAR station, please use the following acknowledgment: "Based on observations made with the Effelsberg LOFAR station of the Max-Planck-Institut für Radioastronomie (MPIfR) at Effelsberg."



Normal Experiment Code Markers

0 ELM2013-012 Kuniyoshi, Horneff

Other Code Markers

Color Meanings

Science A (Astrometry)	Science O (Other)	ILT Mode	Piggyback Without Control
Science C (Cosmology)	Science P (Pulsar)	Effelsberg Mode	Experiment Warning
Science E (Extragalactic)	Science R (Cosmic Rays)	GLOW Mode	Override Possible
Science G (Galactic)	Science S (Solar System)	Juelich Mode	
Science H (Ionosphere)	Test Observation	Station Failure	
Science N (AGN)	Maintenance Mode	Piggyback Control	

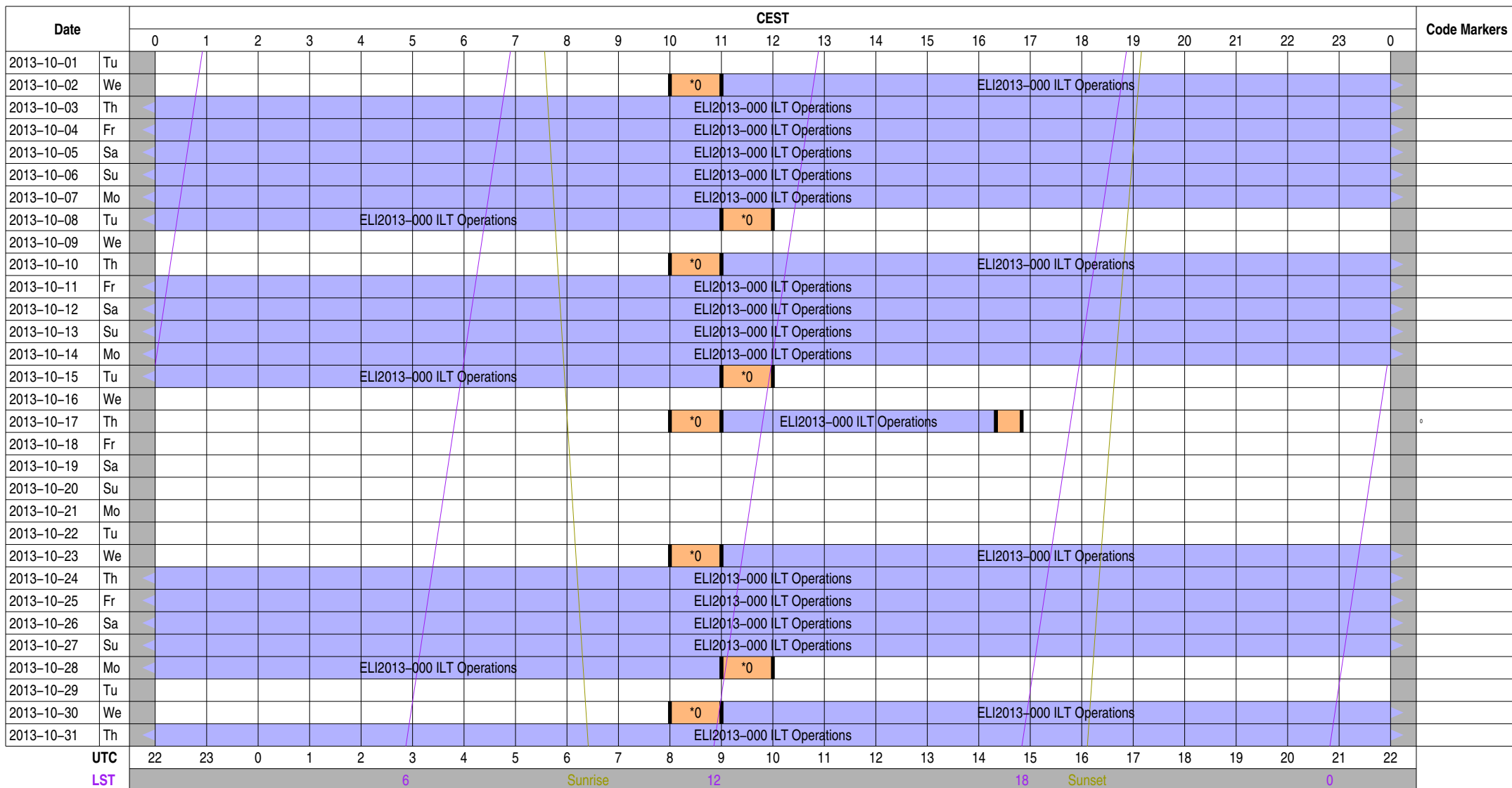
UTC 22 23 0 1 2 3 4 5 6 7 8 9 10 11 12 13 14 15 16 17 18 19 20 21 22
 LST 6 Sunrise 12 Sunset 18 Sunset 0

Observing Plan for Low Band Low, Unused Inputs

MPIfR Effelsberg LOFAR Station

2013-10-01 through 2013-10-30

For any publication based on observations with the Effelsberg LOFAR station, please use the following acknowledgment: "Based on observations made with the Effelsberg LOFAR station of the Max-Planck-Institut für Radioastronomie (MPIfR) at Effelsberg."



Normal Experiment Code Markers

0 ELM2013-012 Kuniyoshi, Horneff

Other Code Markers

Color Meanings

Science A (Astrometry)	Science O (Other)	ILT Mode	Piggyback Without Control
Science C (Cosmology)	Science P (Pulsar)	Effelsberg Mode	Experiment Warning
Science E (Extragalactic)	Science R (Cosmic Rays)	GLOW Mode	Override Possible
Science G (Galactic)	Science S (Solar System)	Juelich Mode	
Science H (Ionosphere)	Test Observation	Station Failure	
Science N (AGN)	Maintenance Mode	Piggyback Control	

UTC

LST

6

Sunrise

12

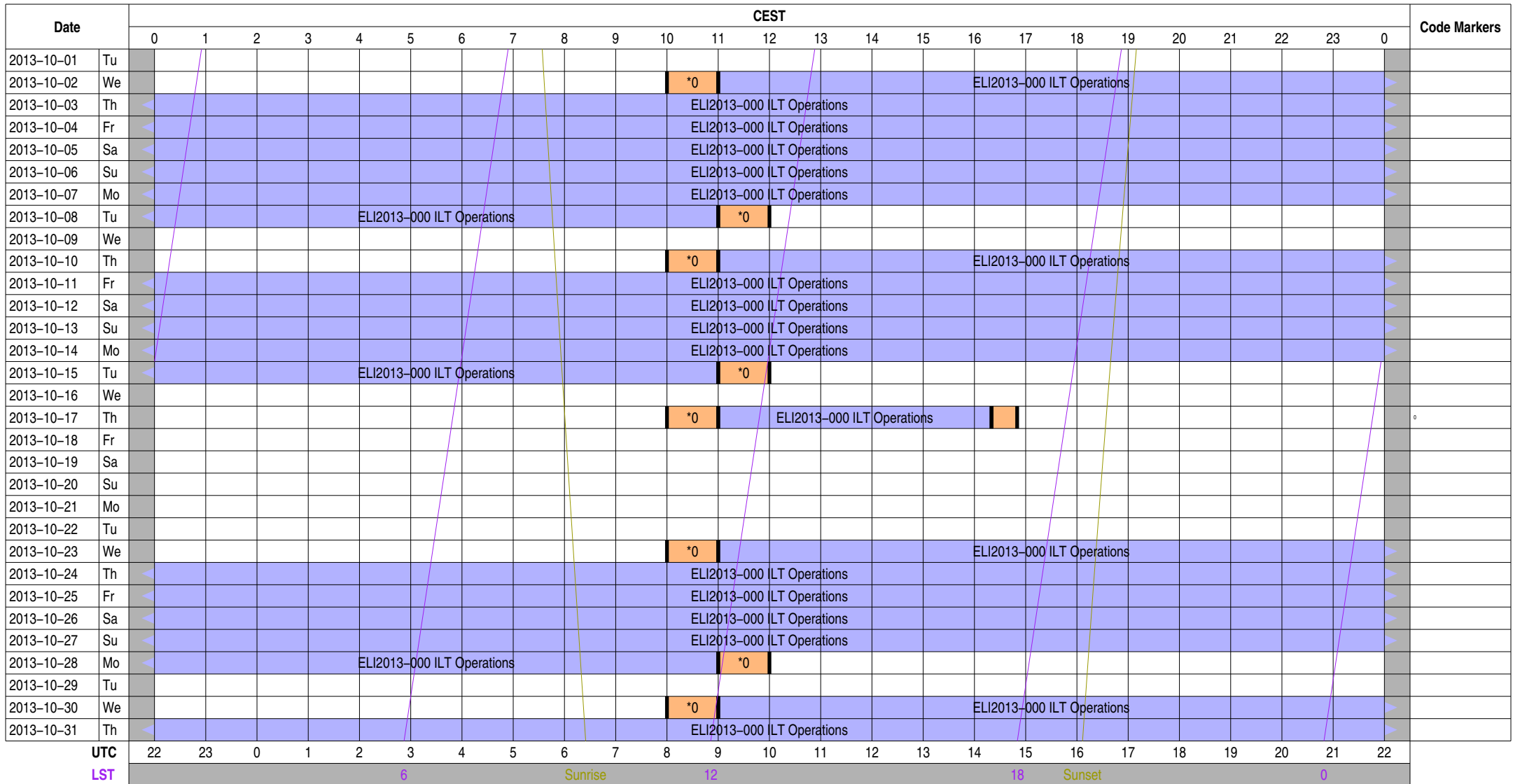
18

Sunset

0

Observing Plan for Station Interferometer MPIfR Effelsberg LOFAR Station 2013-10-01 through 2013-10-30

For any publication based on observations with the Effelsberg LOFAR station, please use the following acknowledgment: "Based on observations made with the Effelsberg LOFAR station of the Max-Planck-Institut für Radioastronomie (MPIfR) at Effelsberg."



Normal Experiment Code Markers

0 ELM2013-012 Kuniyoshi, Horneff

Other Code Markers

Color Meanings

Science A (Astrometry)	Science O (Other)	ILT Mode	Piggyback Without Control
Science C (Cosmology)	Science P (Pulsar)	Effelsberg Mode	Experiment Warning
Science E (Extragalactic)	Science R (Cosmic Rays)	GLOW Mode	Override Possible
Science G (Galactic)	Science S (Solar System)	Juelich Mode	
Science H (Ionosphere)	Test Observation	Station Failure	
Science N (AGN)	Maintenance Mode	Piggyback Control	

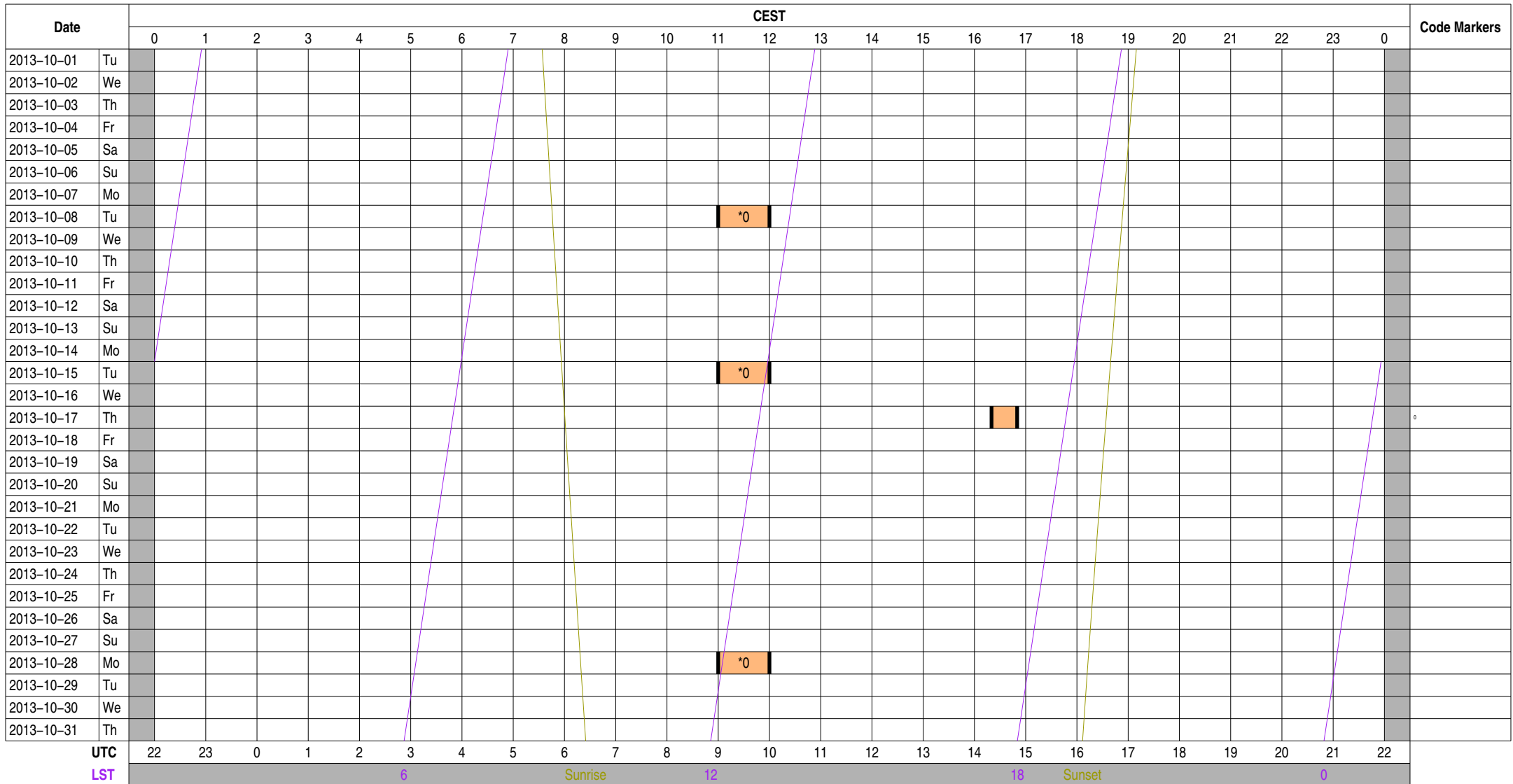
UTC 22 23 0 1 2 3 4 5 6 7 8 9 10 11 12 13 14 15 16 17 18 19 20 21 22
 LST 6 Sunrise 12 Sunset 18 Sunset 0

Observing Plan for IofarAN Computers

MPIfR Effelsberg LOFAR Station

2013-10-01 through 2013-10-30

For any publication based on observations with the Effelsberg LOFAR station, please use the following acknowledgment: "Based on observations made with the Effelsberg LOFAR station of the Max-Planck-Institut für Radioastronomie (MPIfR) at Effelsberg."



Normal Experiment Code Markers

0 ELM2013-012 Kuniyoshi, Horneff

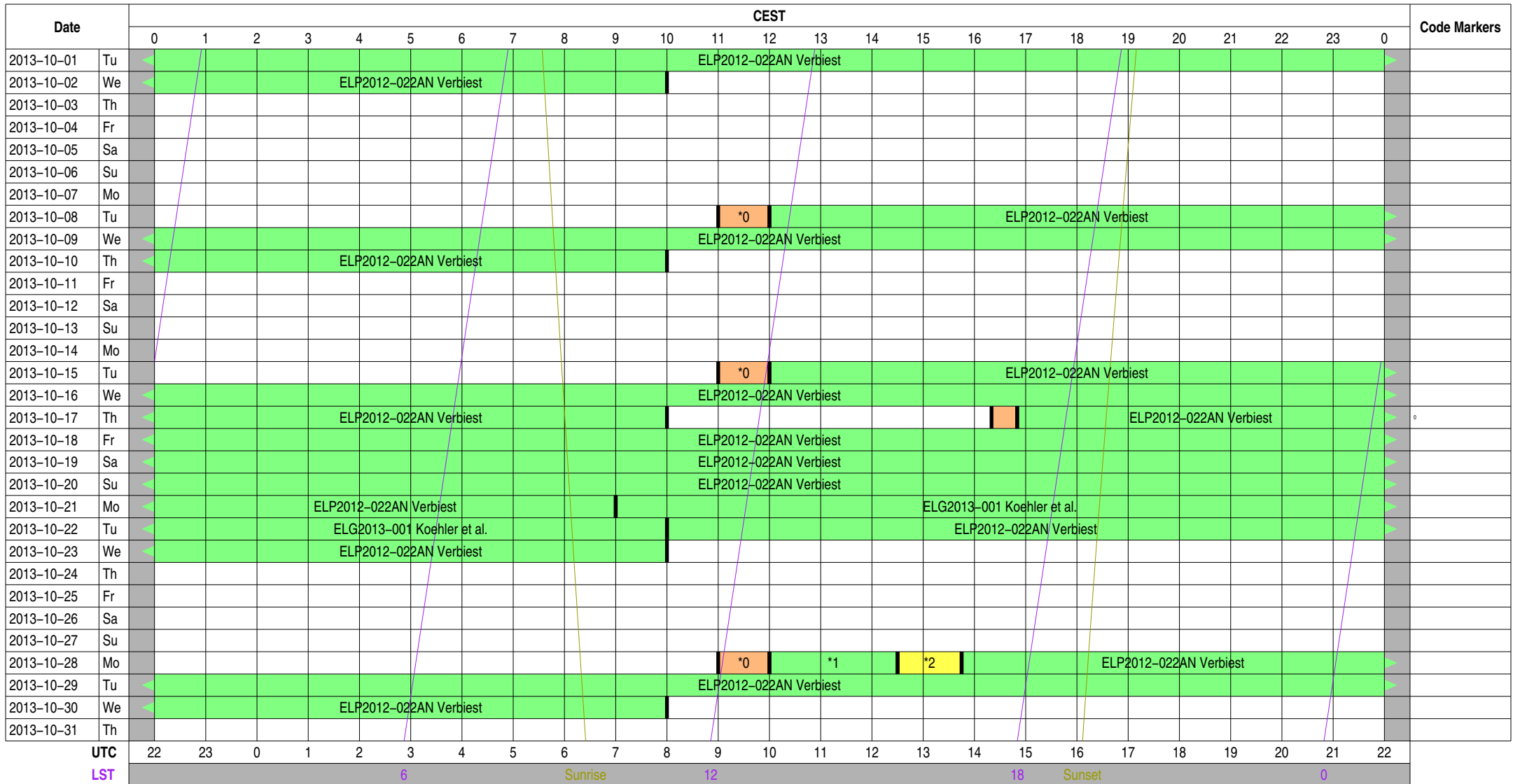
Other Code Markers

Color Meanings

Science A (Astrometry)	Science O (Other)	ILT Mode	Piggyback Without Control
Science C (Cosmology)	Science P (Pulsar)	Effelsberg Mode	Experiment Warning
Science E (Extragalactic)	Science R (Cosmic Rays)	GLOW Mode	Override Possible
Science G (Galactic)	Science S (Solar System)	Juelich Mode	
Science H (Ionosphere)	Test Observation	Station Failure	
Science N (AGN)	Maintenance Mode	Piggyback Control	

Observing Plan for IofarBN Computers MPIfR Effelsberg LOFAR Station 2013-10-01 through 2013-10-30

For any publication based on observations with the Effelsberg LOFAR station, please use the following acknowledgment: "Based on observations made with the Effelsberg LOFAR station of the Max-Planck-Institut für Radioastronomie (MPIfR) at Effelsberg."



Normal Experiment Code Markers

- 0 ELM2013-012 Kuniyoshi, Horneff
- 1 ELP2012-022AN Verbiest
- 2 ELT2013-002 Wucknitz

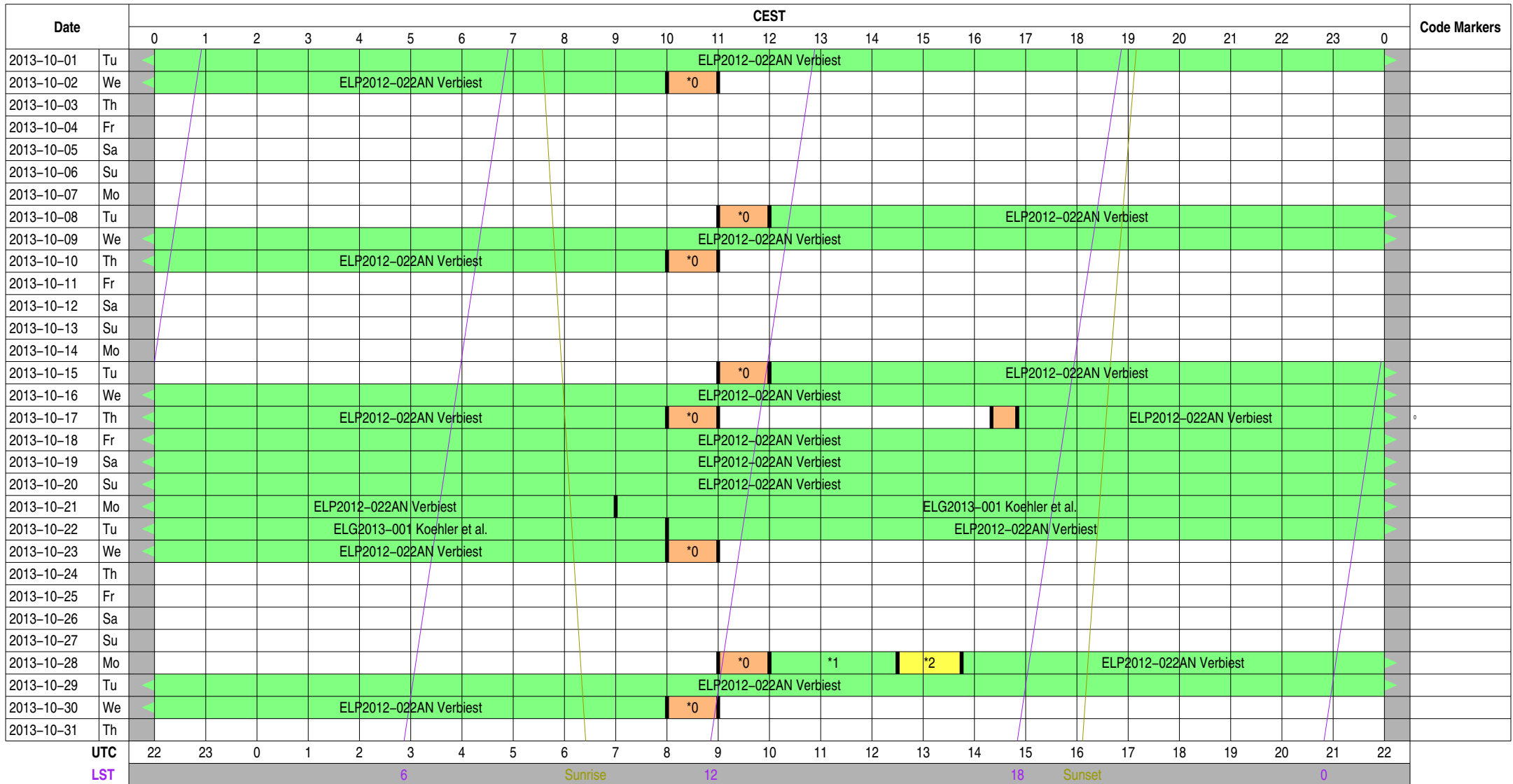
Other Code Markers

Color Meanings

- | | | | |
|---------------------------|--------------------------|-------------------|---------------------------|
| Science A (Astrometry) | Science O (Other) | ILT Mode | Piggyback Without Control |
| Science C (Cosmology) | Science P (Pulsar) | Effelsberg Mode | Experiment Warning |
| Science E (Extragalactic) | Science R (Cosmic Rays) | GLOW Mode | Override Possible |
| Science G (Galactic) | Science S (Solar System) | Juelich Mode | |
| Science H (Ionosphere) | Test Observation | Station Failure | |
| Science N (AGN) | Maintenance Mode | Piggyback Control | |

Observing Plan for lofarx Computer MPIfR Effelsberg LOFAR Station 2013-10-01 through 2013-10-30

For any publication based on observations with the Effelsberg LOFAR station, please use the following acknowledgment: "Based on observations made with the Effelsberg LOFAR station of the Max-Planck-Institut für Radioastronomie (MPIfR) at Effelsberg."



Normal Experiment Code Markers

- 0 ELM2013-012 Kuniyoshi, Horneff
- 1 ELP2012-022AN Verbiest
- 2 ELT2013-002 Wucknitz

Other Code Markers

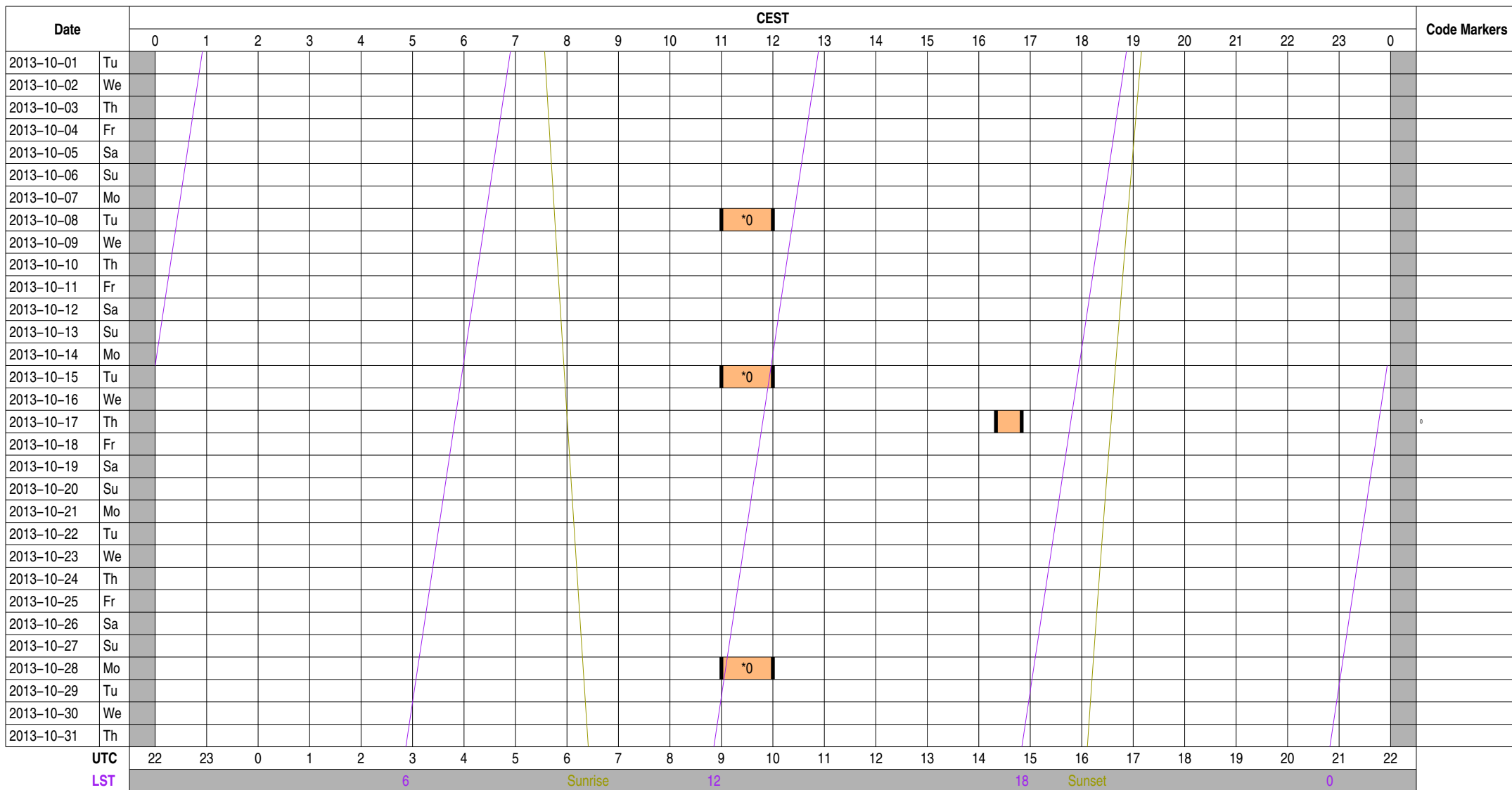
UTC 22 23 0 1 2 3 4 5 6 7 8 9 10 11 12 13 14 15 16 17 18 19 20 21 22
 LST 6 Sunrise 12 18 Sunset 0

Color Meanings

- | | | | |
|---------------------------|--------------------------|-------------------|---------------------------|
| Science A (Astrometry) | Science O (Other) | ILT Mode | Piggyback Without Control |
| Science C (Cosmology) | Science P (Pulsar) | Effelsberg Mode | Experiment Warning |
| Science E (Extragalactic) | Science R (Cosmic Rays) | GLOW Mode | Override Possible |
| Science G (Galactic) | Science S (Solar System) | Juelich Mode | |
| Science H (Ionosphere) | Test Observation | Station Failure | |
| Science N (AGN) | Maintenance Mode | Piggyback Control | |

Observing Plan for Iofarsrv Computer MPIfR Effelsberg LOFAR Station 2013-10-01 through 2013-10-30

For any publication based on observations with the Effelsberg LOFAR station, please use the following acknowledgment: "Based on observations made with the Effelsberg LOFAR station of the Max-Planck-Institut für Radioastronomie (MPIfR) at Effelsberg."



Normal Experiment Code Markers

0 ELM2013-012 Kuniyoshi, Horneff

Other Code Markers

Color Meanings

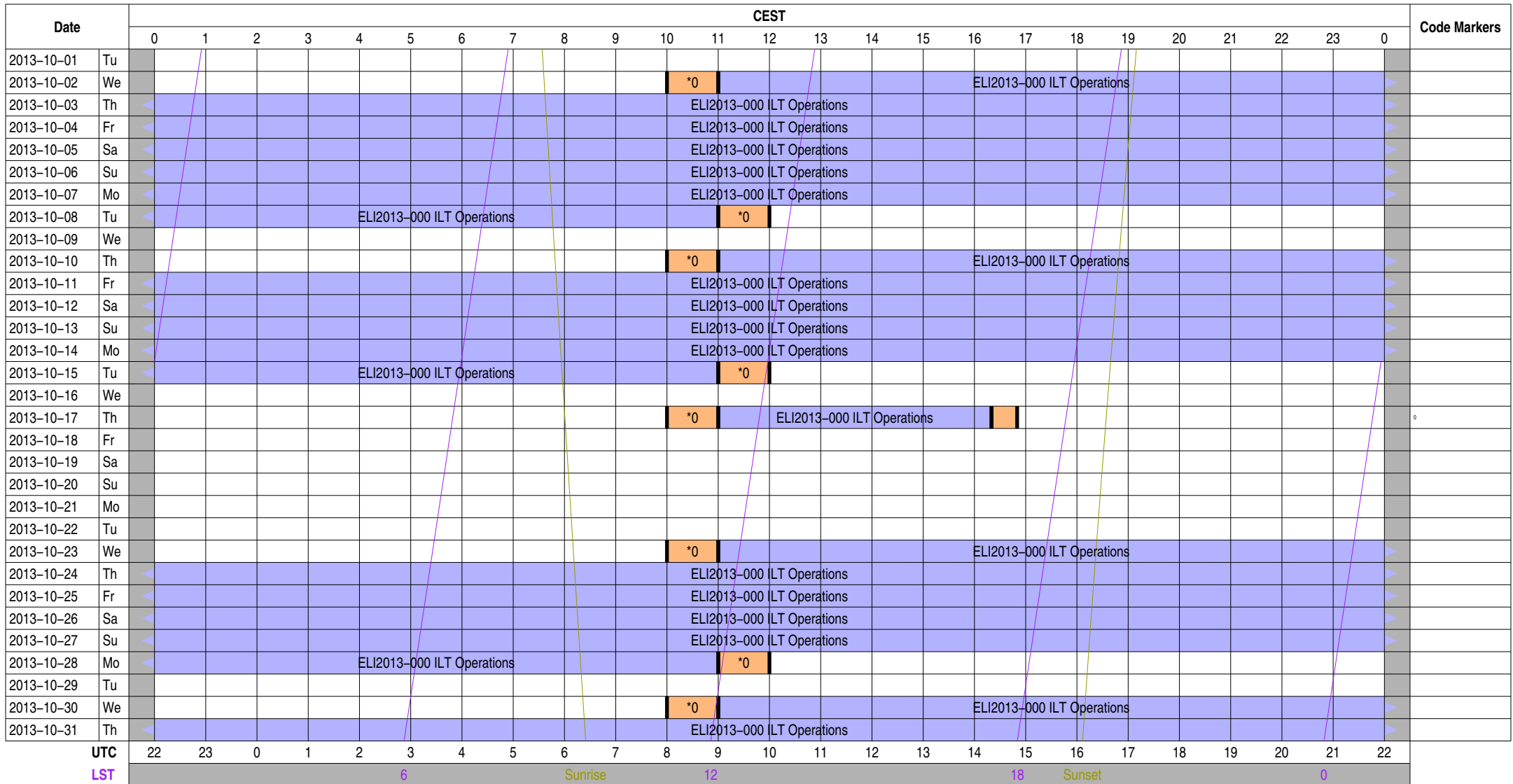
- | | | | |
|---------------------------|--------------------------|-------------------|---------------------------|
| Science A (Astrometry) | Science O (Other) | ILT Mode | Piggyback Without Control |
| Science C (Cosmology) | Science P (Pulsar) | Effelsberg Mode | Experiment Warning |
| Science E (Extragalactic) | Science R (Cosmic Rays) | GLOW Mode | Override Possible |
| Science G (Galactic) | Science S (Solar System) | Juelich Mode | |
| Science H (Ionosphere) | Test Observation | Station Failure | |
| Science N (AGN) | Maintenance Mode | Piggyback Control | |

Observing Plan for LOFAR Fiber Connection

MPIfR Effelsberg LOFAR Station

2013-10-01 through 2013-10-30

For any publication based on observations with the Effelsberg LOFAR station, please use the following acknowledgment: "Based on observations made with the Effelsberg LOFAR station of the Max-Planck-Institut für Radioastronomie (MPIfR) at Effelsberg."



Normal Experiment Code Markers

0 ELM2013-012 Kuniyoshi, Horneff

Other Code Markers

Color Meanings

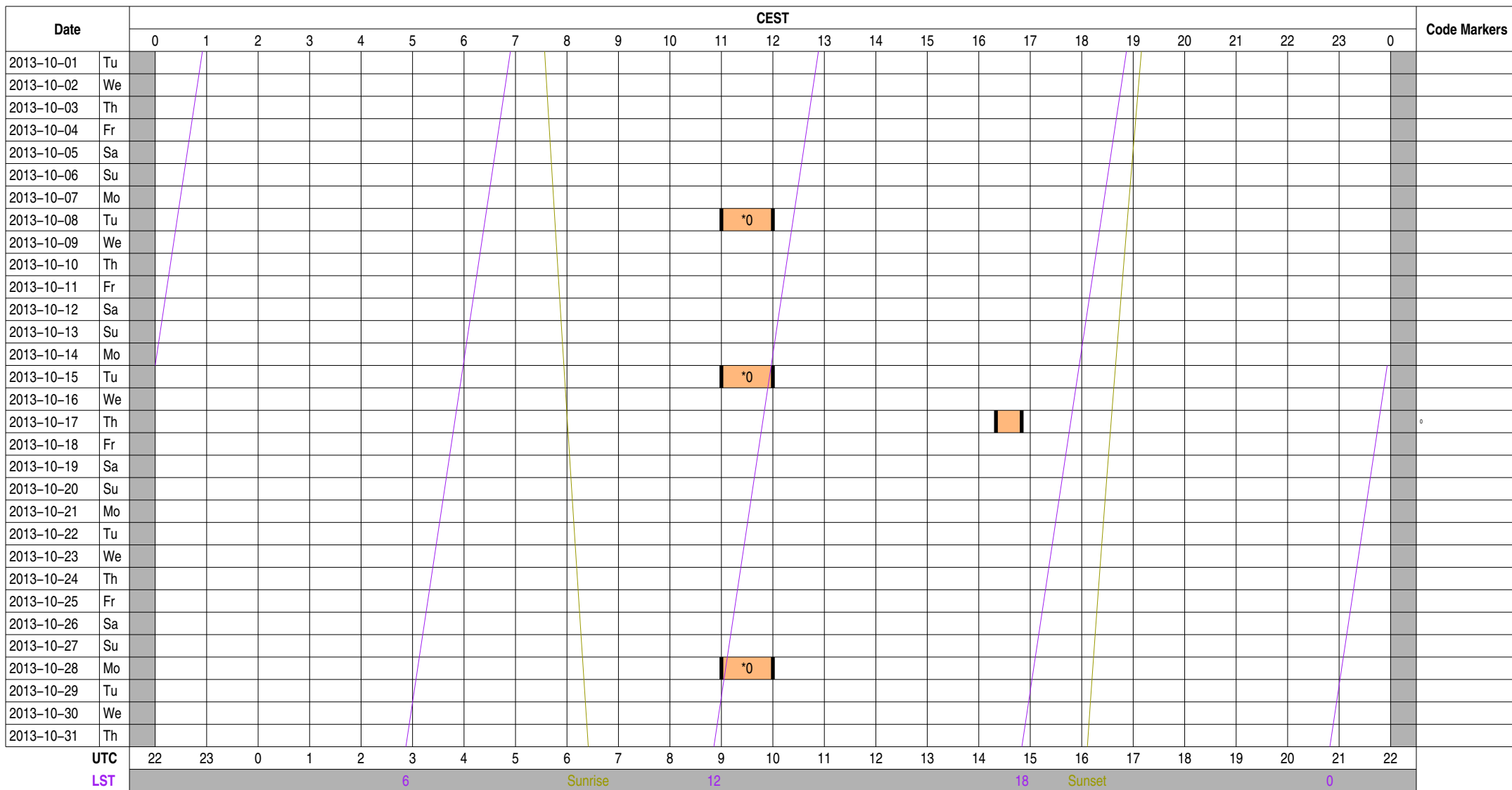
Science A (Astrometry)	Science O (Other)	ILT Mode	Piggyback Without Control
Science C (Cosmology)	Science P (Pulsar)	Effelsberg Mode	Experiment Warning
Science E (Extragalactic)	Science R (Cosmic Rays)	GLOW Mode	Override Possible
Science G (Galactic)	Science S (Solar System)	Juelich Mode	
Science H (Ionosphere)	Test Observation	Station Failure	
Science N (AGN)	Maintenance Mode	Piggyback Control	

Observing Plan for LOFAR Bonn--EF Fiber Connection

MPIfR Effelsberg LOFAR Station

2013-10-01 through 2013-10-30

For any publication based on observations with the Effelsberg LOFAR station, please use the following acknowledgment: "Based on observations made with the Effelsberg LOFAR station of the Max-Planck-Institut für Radioastronomie (MPIfR) at Effelsberg."



Normal Experiment Code Markers

0 ELM2013-012 Kuniyoshi, Horneff

Other Code Markers

Color Meanings

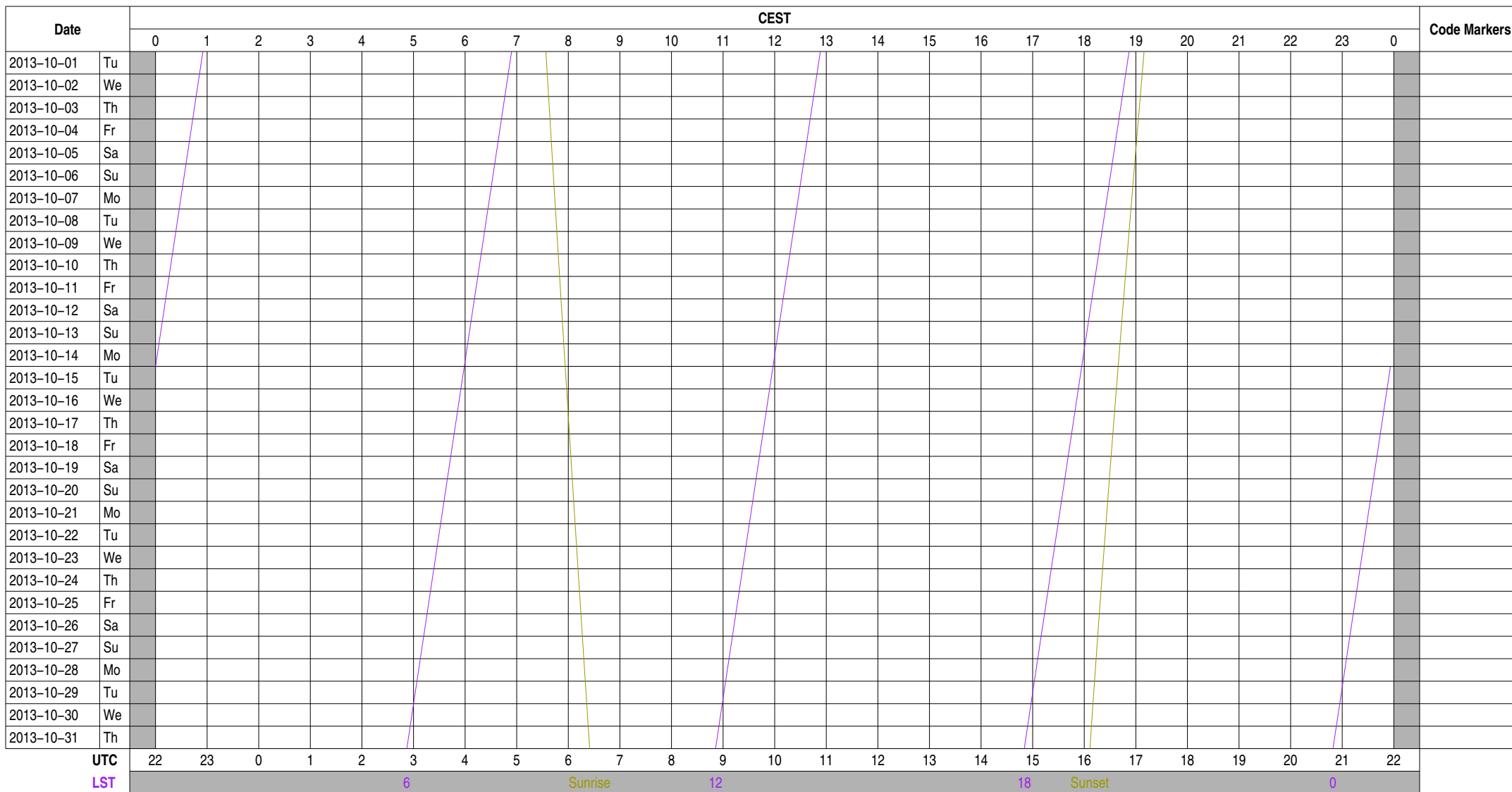
Science A (Astrometry)	Science O (Other)	ILT Mode	Piggyback Without Control
Science C (Cosmology)	Science P (Pulsar)	Effelsberg Mode	Experiment Warning
Science E (Extragalactic)	Science R (Cosmic Rays)	GLOW Mode	Override Possible
Science G (Galactic)	Science S (Solar System)	Juelich Mode	
Science H (Ionosphere)	Test Observation	Station Failure	
Science N (AGN)	Maintenance Mode	Piggyback Control	

Observing Plan for Operator On-Duty

MPIfR Effelsberg LOFAR Station

2013-10-01 through 2013-10-30

For any publication based on observations with the Effelsberg LOFAR station, please use the following acknowledgment: "Based on observations made with the Effelsberg LOFAR station of the Max-Planck-Institut für Radioastronomie (MPIfR) at Effelsberg."



Normal Experiment Code Markers

Other Code Markers

Color Meanings

- 100 m Operator
- Anderson
- Kuniyoshi
- Horneffer
- Other
- Unknown

Experiment Information for Normal Observations

ELG2013-001	Koehler et al.	jana@mpifr-bonn.mpg.de	+49 228 525 533	Large-scale maps of the Milky Way at low frequencies
ELG2013-001	Koehler et al.	jana@mpifr-bonn.mpg.de	+49 228 525 533	Large-scale maps of the Milky Way at low frequencies
ELI2013-000	ILT Operations	observer@astron.nl	+31 521 595 777	Main ILT Observations, ILT Operations only on-duty 9--17, M
ELI2013-000	ILT Operations	observer@astron.nl	+31 521 595 777	Main ILT Observations, ILT Operations only on-duty 9--17, M
ELI2013-000	ILT Operations	observer@astron.nl	+31 521 595 777	Main ILT Observations, ILT Operations only on-duty 9--17, M
ELI2013-000	ILT Operations	observer@astron.nl	+31 521 595 777	Main ILT Observations, ILT Operations only on-duty 9--17, M
ELI2013-000	ILT Operations	observer@astron.nl	+31 521 595 777	Main ILT Observations, ILT Operations only on-duty 9--17, M
ELM2013-012	Kuniyoshi, Horneffer, Anderson	lofar-ops@mpifr-bonn.mpg.de	+49 228 525 356	Handover operations for local to ILT mode (MPIFR time)
ELM2013-012	Kuniyoshi, Horneffer, Anderson	lofar-ops@mpifr-bonn.mpg.de	+49 228 525 356	Handover operations for local to ILT mode (MPIFR time)
ELM2013-012	Kuniyoshi, Horneffer, Anderson	lofar-ops@mpifr-bonn.mpg.de	+49 228 525 356	Handover operations for local to ILT mode (MPIFR time)
ELM2013-012	Kuniyoshi, Horneffer, Anderson	lofar-ops@mpifr-bonn.mpg.de	+49 228 525 356	Handover operations for local to ILT mode (MPIFR time)
ELM2013-012	Kuniyoshi, Horneffer, Anderson	lofar-ops@mpifr-bonn.mpg.de	+49 228 525 356	Handover operations for local to ILT mode (MPIFR time)
ELM2013-012	Kuniyoshi, Horneffer, Anderson	lofar-ops@mpifr-bonn.mpg.de	+49 228 525 356	Handover operations for local to ILT mode (MPIFR time)
ELM2013-012	Kuniyoshi, Horneffer, Anderson	lofar-ops@mpifr-bonn.mpg.de	+49 228 525 356	Handover operations for local to ILT mode (MPIFR time)
ELM2013-012	Kuniyoshi, Horneffer, Anderson	lofar-ops@mpifr-bonn.mpg.de	+49 228 525 356	Handover operations for local to ILT mode (MPIFR time)
ELM2013-012	Kuniyoshi, Horneffer, Anderson	lofar-ops@mpifr-bonn.mpg.de	+49 228 525 356	Handover operations for local to ILT mode (MPIFR time)
ELP2012-022	Verbiest	verbiest@mpifr-bonn.mpg.de	+49 228 525 246	Assessing the Timing Potential of LOFAR for Pulsars
ELP2012-022 AN	Verbiest	verbiest@mpifr-bonn.mpg.de	+49 228 525 246	Assessing the Timing Potential of LOFAR for Pulsars
ELP2012-022 AN	Verbiest	verbiest@mpifr-bonn.mpg.de	+49 228 525 246	Assessing the Timing Potential of LOFAR for Pulsars
ELP2012-022 AN	Verbiest	verbiest@mpifr-bonn.mpg.de	+49 228 525 246	Assessing the Timing Potential of LOFAR for Pulsars
ELP2012-022 AN	Verbiest	verbiest@mpifr-bonn.mpg.de	+49 228 525 246	Assessing the Timing Potential of LOFAR for Pulsars
ELP2012-022 AN	Verbiest	verbiest@mpifr-bonn.mpg.de	+49 228 525 246	Assessing the Timing Potential of LOFAR for Pulsars
ELP2012-022 AN	Verbiest	verbiest@mpifr-bonn.mpg.de	+49 228 525 246	Assessing the Timing Potential of LOFAR for Pulsars
ELT2013-002	Wucknitz	wucknitz@mpifr-bonn.mpg.de	73-1772	testing TBB subband mode and station calibration
ELT2013-002	Wucknitz	wucknitz@mpifr-bonn.mpg.de	73-1772	testing TBB subband mode and station calibration

Experiment Information for Other Actions

Experiment Information for Operator On-Duty Schedule

Time Usage [hours] for Normal Observations

Experiment Code	station	TBB	HBA	LBH	LBL	interfe	lofarAN	lofarBN	lofarx	lofarsr	fiber	BN--EF_	duty
ELG2013-001	25.00		25.00					25.00	25.00				
ELG2013-001	25.00		25.00					25.00	25.00				
ELI2013-000	426.33	426.33	426.33	426.33	426.33	426.33					426.33		
ELI2013-000	144.00	144.00	144.00	144.00	144.00	144.00					144.00		
ELI2013-000	120.00	120.00	120.00	120.00	120.00	120.00					120.00		
ELI2013-000	5.33	5.33	5.33	5.33	5.33	5.33					5.33		
ELI2013-000	120.00	120.00	120.00	120.00	120.00	120.00					120.00		
ELI2013-000	37.00	37.00	37.00	37.00	37.00	37.00					37.00		
ELM2013-012	8.50	8.50	8.50	8.50	8.50	8.50	3.50	3.50	8.50	3.50	8.50	3.50	
ELM2013-012	1.00	1.00	1.00	1.00	1.00	1.00			1.00		1.00		
ELM2013-012	1.00	1.00	1.00	1.00	1.00	1.00	1.00	1.00	1.00	1.00	1.00	1.00	
ELM2013-012	1.00	1.00	1.00	1.00	1.00	1.00			1.00		1.00		
ELM2013-012	1.00	1.00	1.00	1.00	1.00	1.00	1.00	1.00	1.00	1.00	1.00	1.00	
ELM2013-012	1.00	1.00	1.00	1.00	1.00	1.00			1.00		1.00		
ELM2013-012	0.50	0.50	0.50	0.50	0.50	0.50	0.50	0.50	0.50	0.50	0.50	0.50	
ELM2013-012	1.00	1.00	1.00	1.00	1.00	1.00			1.00		1.00		
ELM2013-012	1.00	1.00	1.00	1.00	1.00	1.00	1.00	1.00	1.00	1.00	1.00	1.00	
ELM2013-012	1.00	1.00	1.00	1.00	1.00	1.00			1.00		1.00		
ELP2012-022	282.92		282.92					282.92	282.92				
ELP2012-022 AN	34.00		34.00					34.00	34.00				
ELP2012-022 AN	46.00		46.00					46.00	46.00				
ELP2012-022 AN	46.00		46.00					46.00	46.00				
ELP2012-022 AN	88.17		88.17					88.17	88.17				
ELP2012-022 AN	24.00		24.00					24.00	24.00				
ELP2012-022 AN	2.50		2.50					2.50	2.50				
ELP2012-022 AN	42.25		42.25					42.25	42.25				
ELT2013-002	1.25		1.25					1.25	1.25				
ELT2013-002	1.25		1.25					1.25	1.25				

Time Usage [hours] for Other Actions

Experiment Code	station	TBB	HBA	LBH	LBL	interfe	lofarAN	lofarBN	lofarx	lofarsr	fiber	BN--EF_	duty
-----------------	---------	-----	-----	-----	-----	---------	---------	---------	--------	---------	-------	---------	------

Time Usage [hours] for Operator On-Duty Schedule

Experiment Code

station

TBB

HBA

LBH

LBL

interfe

lofarAN

lofarBN

lofarx

lofarsr

fiber

BN--EF_

duty

