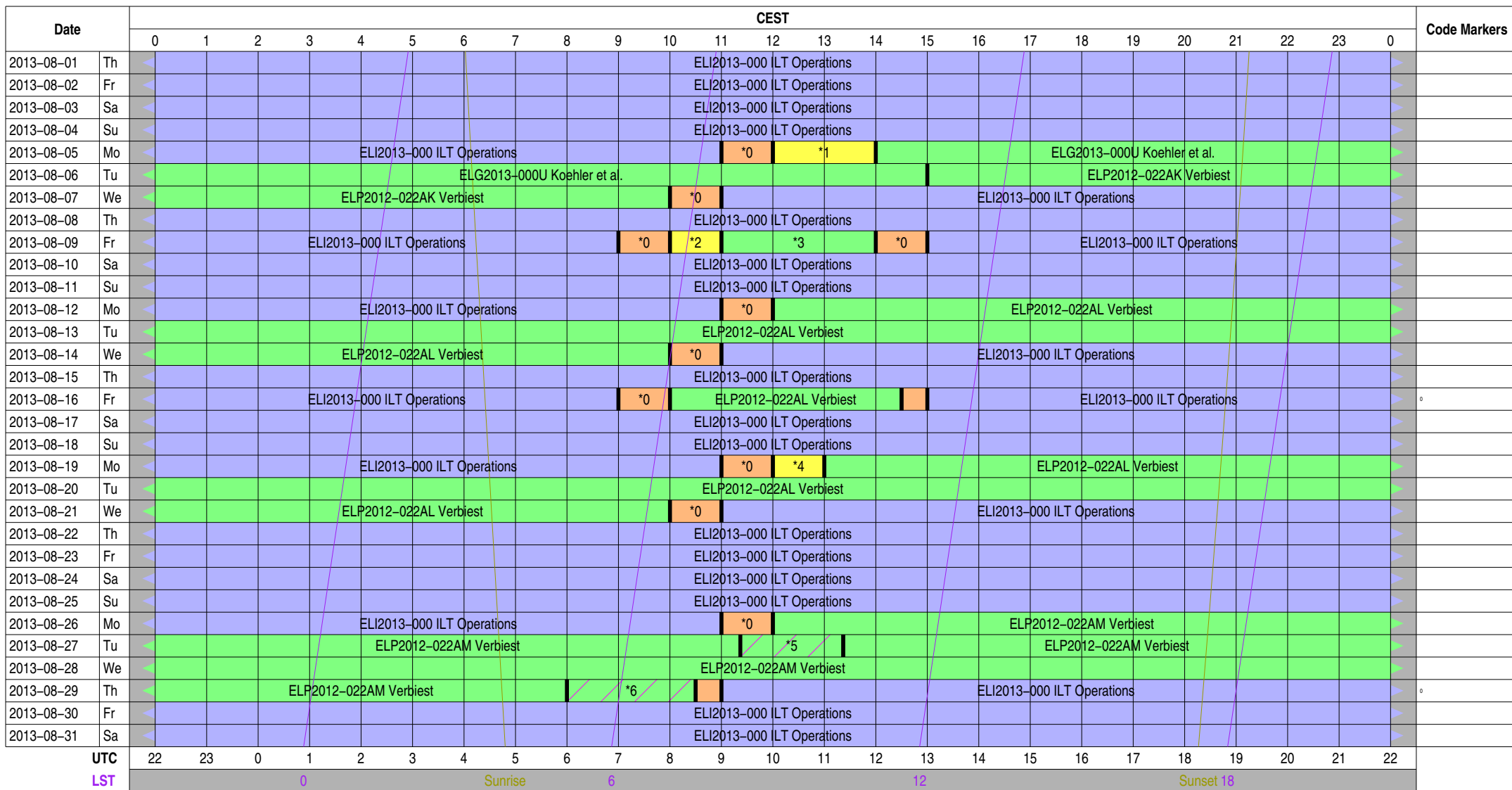


Observing Plan for Station Control (LCU)

MPIfR Effelsberg LOFAR Station

2013-08-01 through 2013-08-31

For any publication based on observations with the Effelsberg LOFAR station, please use the following acknowledgment: "Based on observations made with the Effelsberg LOFAR station of the Max-Planck-Institut für Radioastronomie (MPIfR) at Effelsberg."



Normal Experiment Code Markers

- 0 ELM2013-012 Kuniyoshi, Horneff
- 1 ELT2012-005D Anderson
- 2 ELT2012-005E Anderson
- 3 ELP2012-022AL Verbiest
- 4 ELT2012-005F Anderson
- 5 ELP2013-006 Verbiest, Kuniyoshi
- 6 ELS2013-001 Koehler et al.

Other Code Markers

Color Meanings

- | | | | |
|---------------------------|--------------------------|-------------------|---------------------------|
| Science A (Astrometry) | Science O (Other) | ILT Mode | Piggyback Without Control |
| Science C (Cosmology) | Science P (Pulsar) | Effelsberg Mode | Experiment Warning |
| Science E (Extragalactic) | Science R (Cosmic Rays) | GLOW Mode | Override Possible |
| Science G (Galactic) | Science S (Solar System) | Juelich Mode | |
| Science H (Ionosphere) | Test Observation | Station Failure | |
| Science N (AGN) | Maintenance Mode | Piggyback Control | |

Observing Plan for Transient Buffer Boards

MPIfR Effelsberg LOFAR Station

2013-08-01 through 2013-08-31

For any publication based on observations with the Effelsberg LOFAR station, please use the following acknowledgment: "Based on observations made with the Effelsberg LOFAR station of the Max-Planck-Institut für Radioastronomie (MPIfR) at Effelsberg."



Normal Experiment Code Markers

- 0 ELM2013-012 Kuniyoshi, Horneff
- 1 ELT2012-005D Anderson
- 2 ELT2012-005E Anderson
- 3 ELT2012-005F Anderson
- 4 ELP2013-006 Verbiest, Kuniyoshi
- 5 ELS2013-001 Koehler et al.

Other Code Markers

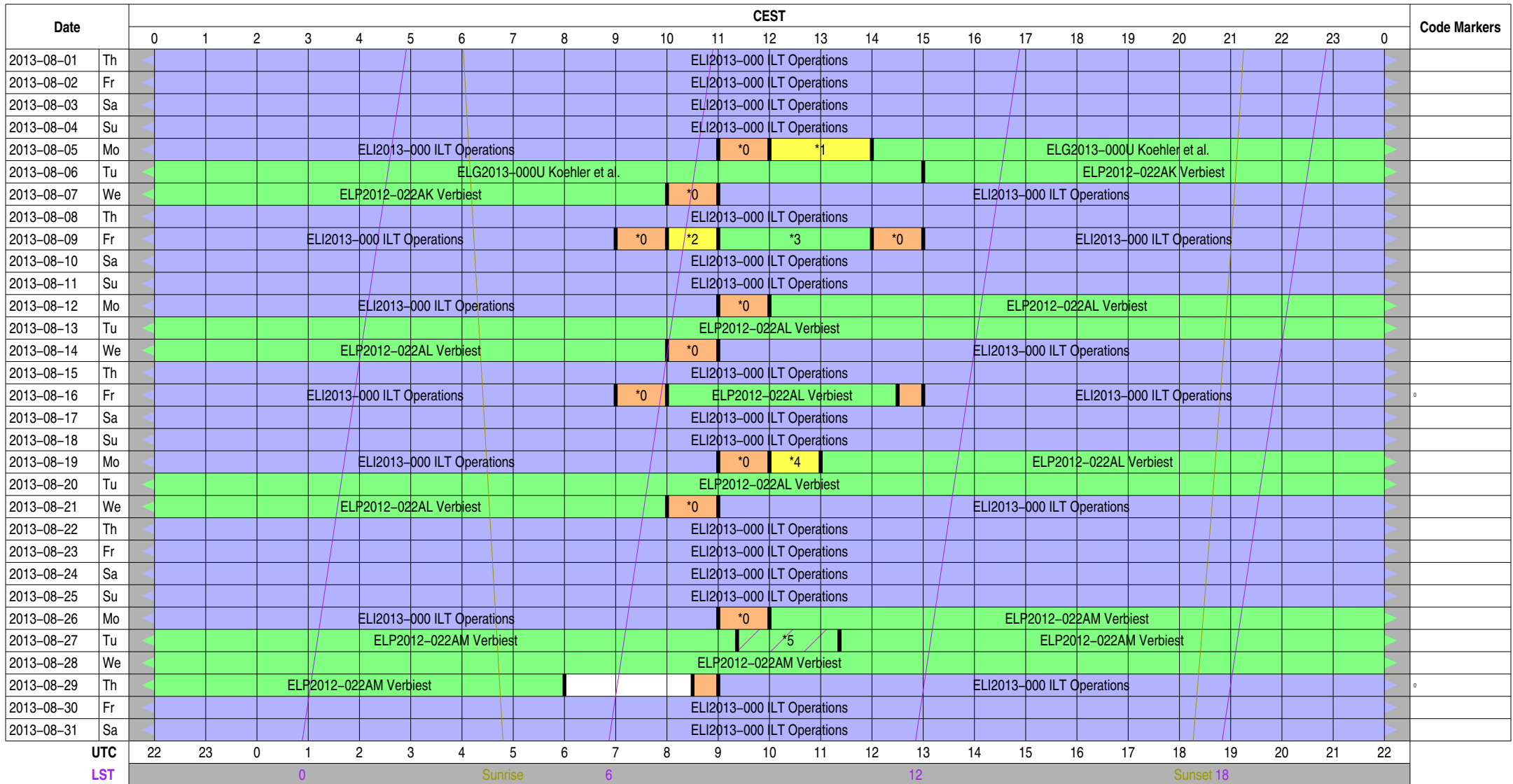
Color Meanings

- | | | |
|---------------------------|--------------------------|-------------------|
| Science A (Astrometry) | Science O (Other) | ILT Mode |
| Science C (Cosmology) | Science P (Pulsar) | Effelsberg Mode |
| Science E (Extragalactic) | Science R (Cosmic Rays) | GLOW Mode |
| Science G (Galactic) | Science S (Solar System) | Juelich Mode |
| Science H (Ionosphere) | Test Observation | Station Failure |
| Science N (AGN) | Maintenance Mode | Piggyback Control |

- Piggyback Without Control
- Experiment Warning
- Override Possible

Observing Plan for HBA MPIfR Effelsberg LOFAR Station 2013-08-01 through 2013-08-31

For any publication based on observations with the Effelsberg LOFAR station, please use the following acknowledgment: "Based on observations made with the Effelsberg LOFAR station of the Max-Planck-Institut für Radioastronomie (MPIfR) at Effelsberg."



Normal Experiment Code Markers

- 0 ELM2013-012 Kuniyoshi, Horneff
- 1 ELT2012-005D Anderson
- 2 ELT2012-005E Anderson
- 3 ELP2012-022AL Verbiest
- 4 ELT2012-005F Anderson
- 5 ELP2013-006 Verbiest, Kuniyoshi

Other Code Markers

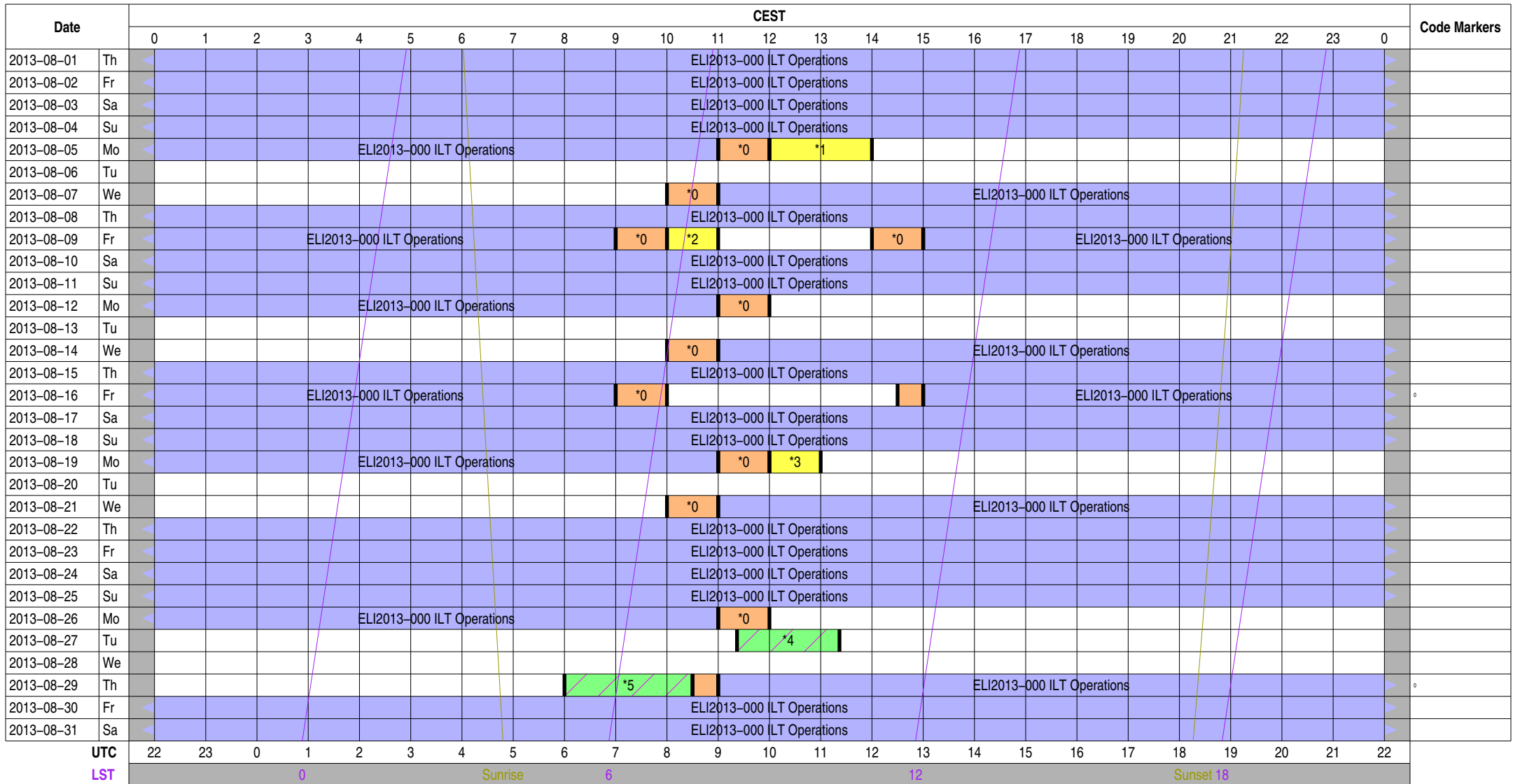
- *0
- *1
- *2
- *3
- *4
- *5

Color Meanings

Science A (Astrometry)	Science O (Other)	ILT Mode	Piggyback Without Control
Science C (Cosmology)	Science P (Pulsar)	Effelsberg Mode	Experiment Warning
Science E (Extragalactic)	Science R (Cosmic Rays)	GLOW Mode	Override Possible
Science G (Galactic)	Science S (Solar System)	Juelich Mode	
Science H (Ionosphere)	Test Observation	Station Failure	
Science N (AGN)	Maintenance Mode	Piggyback Control	

Observing Plan for Low Band High (LBA) MPIfR Effelsberg LOFAR Station 2013-08-01 through 2013-08-31

For any publication based on observations with the Effelsberg LOFAR station, please use the following acknowledgment: "Based on observations made with the Effelsberg LOFAR station of the Max-Planck-Institut für Radioastronomie (MPIfR) at Effelsberg."



Normal Experiment Code Markers

- 0 ELM2013-012 Kuniyoshi, Horneff
- 1 ELT2012-005D Anderson
- 2 ELT2012-005E Anderson
- 3 ELT2012-005F Anderson
- 4 ELP2013-006 Verbiest, Kuniyoshi
- 5 ELS2013-001 Koehler et al.

Other Code Markers

Color Meanings

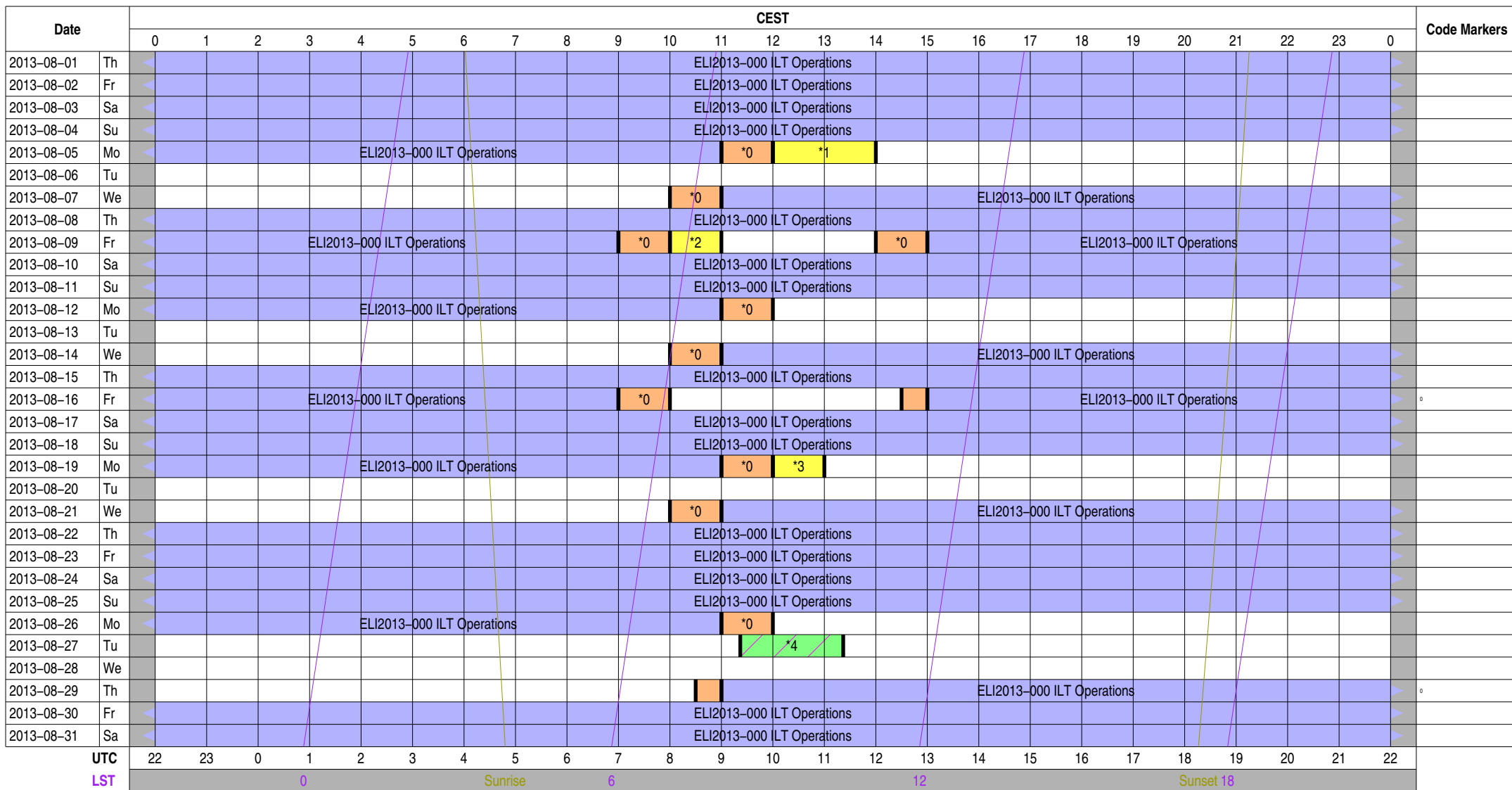
- | | | | |
|---------------------------|--------------------------|-------------------|---------------------------|
| Science A (Astrometry) | Science O (Other) | ILT Mode | Piggyback Without Control |
| Science C (Cosmology) | Science P (Pulsar) | Effelsberg Mode | Experiment Warning |
| Science E (Extragalactic) | Science R (Cosmic Rays) | GLOW Mode | Override Possible |
| Science G (Galactic) | Science S (Solar System) | Juelich Mode | |
| Science H (Ionosphere) | Test Observation | Station Failure | |
| Science N (AGN) | Maintenance Mode | Piggyback Control | |

Observing Plan for Low Band Low, Unused Inputs

MPIfR Effelsberg LOFAR Station

2013-08-01 through 2013-08-31

For any publication based on observations with the Effelsberg LOFAR station, please use the following acknowledgment: "Based on observations made with the Effelsberg LOFAR station of the Max-Planck-Institut für Radioastronomie (MPIfR) at Effelsberg."



Normal Experiment Code Markers

- 0 ELM2013-012 Kuniyoshi, Horneff
- 1 ELT2012-005D Anderson
- 2 ELT2012-005E Anderson
- 3 ELT2012-005F Anderson
- 4 ELP2013-006 Verbiest, Kuniyosh

Other Code Markers

Color Meanings

- | | | | |
|---------------------------|--------------------------|-------------------|---------------------------|
| Science A (Astrometry) | Science O (Other) | ILT Mode | Piggyback Without Control |
| Science C (Cosmology) | Science P (Pulsar) | Effelsberg Mode | Experiment Warning |
| Science E (Extragalactic) | Science R (Cosmic Rays) | GLOW Mode | Override Possible |
| Science G (Galactic) | Science S (Solar System) | Juelich Mode | |
| Science H (Ionosphere) | Test Observation | Station Failure | |
| Science N (AGN) | Maintenance Mode | Piggyback Control | |

Observing Plan for Station Interferometer MPIfR Effelsberg LOFAR Station 2013-08-01 through 2013-08-31

For any publication based on observations with the Effelsberg LOFAR station, please use the following acknowledgment: "Based on observations made with the Effelsberg LOFAR station of the Max-Planck-Institut für Radioastronomie (MPIfR) at Effelsberg."

Date	CEST																								Code Markers			
	0	1	2	3	4	5	6	7	8	9	10	11	12	13	14	15	16	17	18	19	20	21	22	23		0		
2013-08-01	Th	ELI2013-000 LT Operations																										
2013-08-02	Fr	ELI2013-000 LT Operations																										
2013-08-03	Sa	ELI2013-000 LT Operations																										
2013-08-04	Su	ELI2013-000 LT Operations																										
2013-08-05	Mo	ELI2013-000 ILT Operations								*0	*1																	
2013-08-06	Tu																											
2013-08-07	We									*0	ELI2013-000 ILT Operations																	
2013-08-08	Th	ELI2013-000 LT Operations																										
2013-08-09	Fr	ELI2013-000 ILT Operations								*0	*2	*0	ELI2013-000 ILT Operations															
2013-08-10	Sa	ELI2013-000 LT Operations																										
2013-08-11	Su	ELI2013-000 LT Operations																										
2013-08-12	Mo	ELI2013-000 ILT Operations								*0																		
2013-08-13	Tu																											
2013-08-14	We									*0	ELI2013-000 ILT Operations																	
2013-08-15	Th	ELI2013-000 LT Operations																										
2013-08-16	Fr	ELI2013-000 ILT Operations								*0	*0	ELI2013-000 ILT Operations															°	
2013-08-17	Sa	ELI2013-000 LT Operations																										
2013-08-18	Su	ELI2013-000 LT Operations																										
2013-08-19	Mo	ELI2013-000 ILT Operations								*0	*3																	
2013-08-20	Tu																											
2013-08-21	We									*0	ELI2013-000 ILT Operations																	
2013-08-22	Th	ELI2013-000 LT Operations																										
2013-08-23	Fr	ELI2013-000 LT Operations																										
2013-08-24	Sa	ELI2013-000 LT Operations																										
2013-08-25	Su	ELI2013-000 LT Operations																										
2013-08-26	Mo	ELI2013-000 ILT Operations								*0																		
2013-08-27	Tu									*4																		
2013-08-28	We																											
2013-08-29	Th									*0	ELI2013-000 ILT Operations															°		
2013-08-30	Fr	ELI2013-000 LT Operations																										
2013-08-31	Sa	ELI2013-000 LT Operations																										

UTC 22 23 0 1 2 3 4 5 6 7 8 9 10 11 12 13 14 15 16 17 18 19 20 21 22
 LST 0 Sunrise 6 12 Sunset 18

Normal Experiment Code Markers

- 0 ELM2013-012 Kuniyoshi, Horneff
- 1 ELT2012-005D Anderson
- 2 ELT2012-005E Anderson
- 3 ELT2012-005F Anderson
- 4 ELP2013-006 Verbiest, Kuniyosh

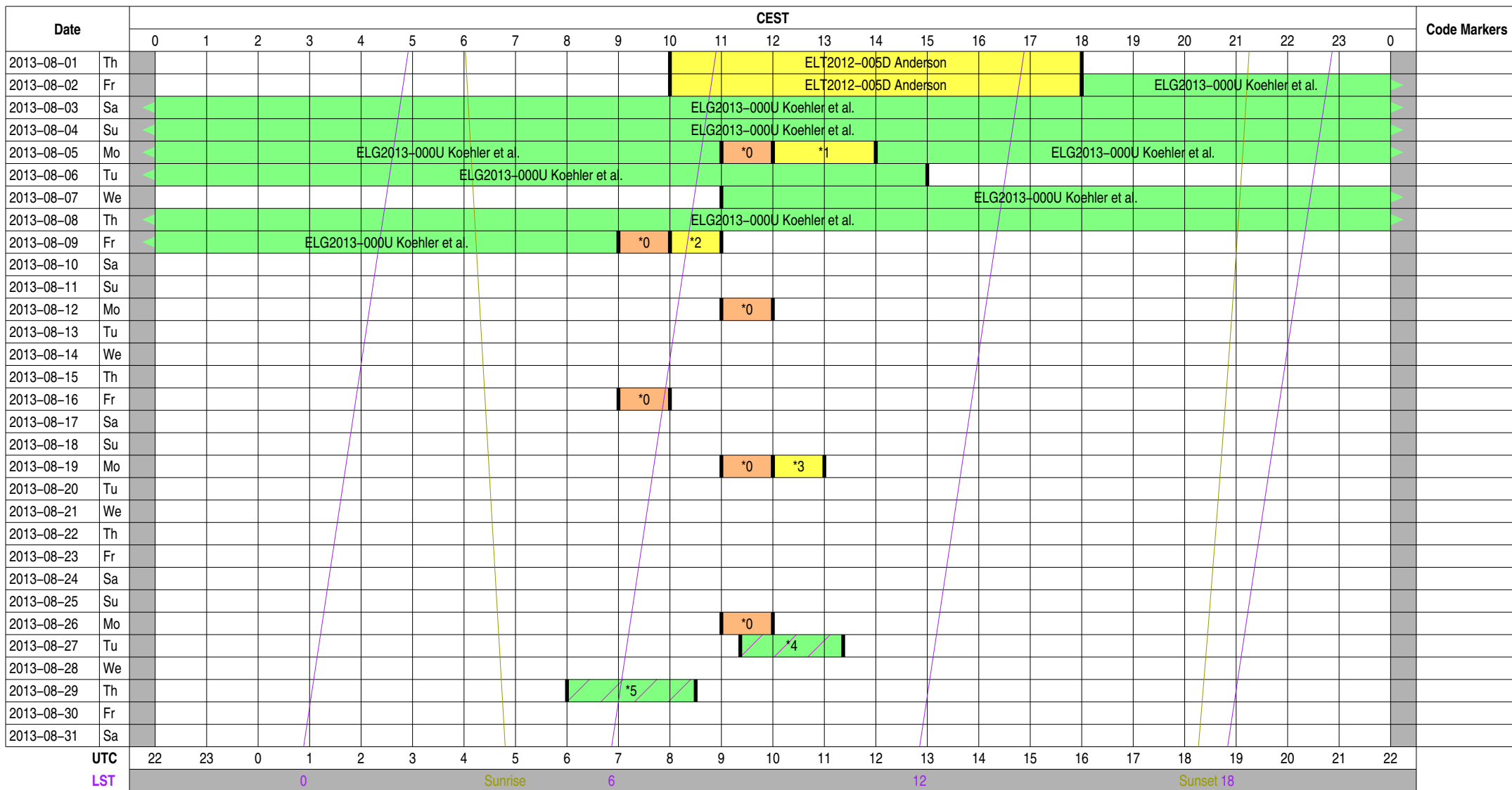
Other Code Markers

Color Meanings

- | | | | |
|---------------------------|--------------------------|-------------------|---------------------------|
| Science A (Astrometry) | Science O (Other) | ILT Mode | Piggyback Without Control |
| Science C (Cosmology) | Science P (Pulsar) | Effelsberg Mode | Experiment Warning |
| Science E (Extragalactic) | Science R (Cosmic Rays) | GLOW Mode | Override Possible |
| Science G (Galactic) | Science S (Solar System) | Juelich Mode | |
| Science H (Ionosphere) | Test Observation | Station Failure | |
| Science N (AGN) | Maintenance Mode | Piggyback Control | |

Observing Plan for IofarAN Computers MPIfR Effelsberg LOFAR Station 2013-08-01 through 2013-08-31

For any publication based on observations with the Effelsberg LOFAR station, please use the following acknowledgment: "Based on observations made with the Effelsberg LOFAR station of the Max-Planck-Institut für Radioastronomie (MPIfR) at Effelsberg."



Normal Experiment Code Markers

- 0 ELM2013-012 Kuniyoshi, Horneff
- 1 ELT2012-005D Anderson
- 2 ELT2012-005E Anderson
- 3 ELT2012-005F Anderson
- 4 ELP2013-006 Verbiest, Kuniyoshi
- 5 ELS2013-001 Koehler et al.

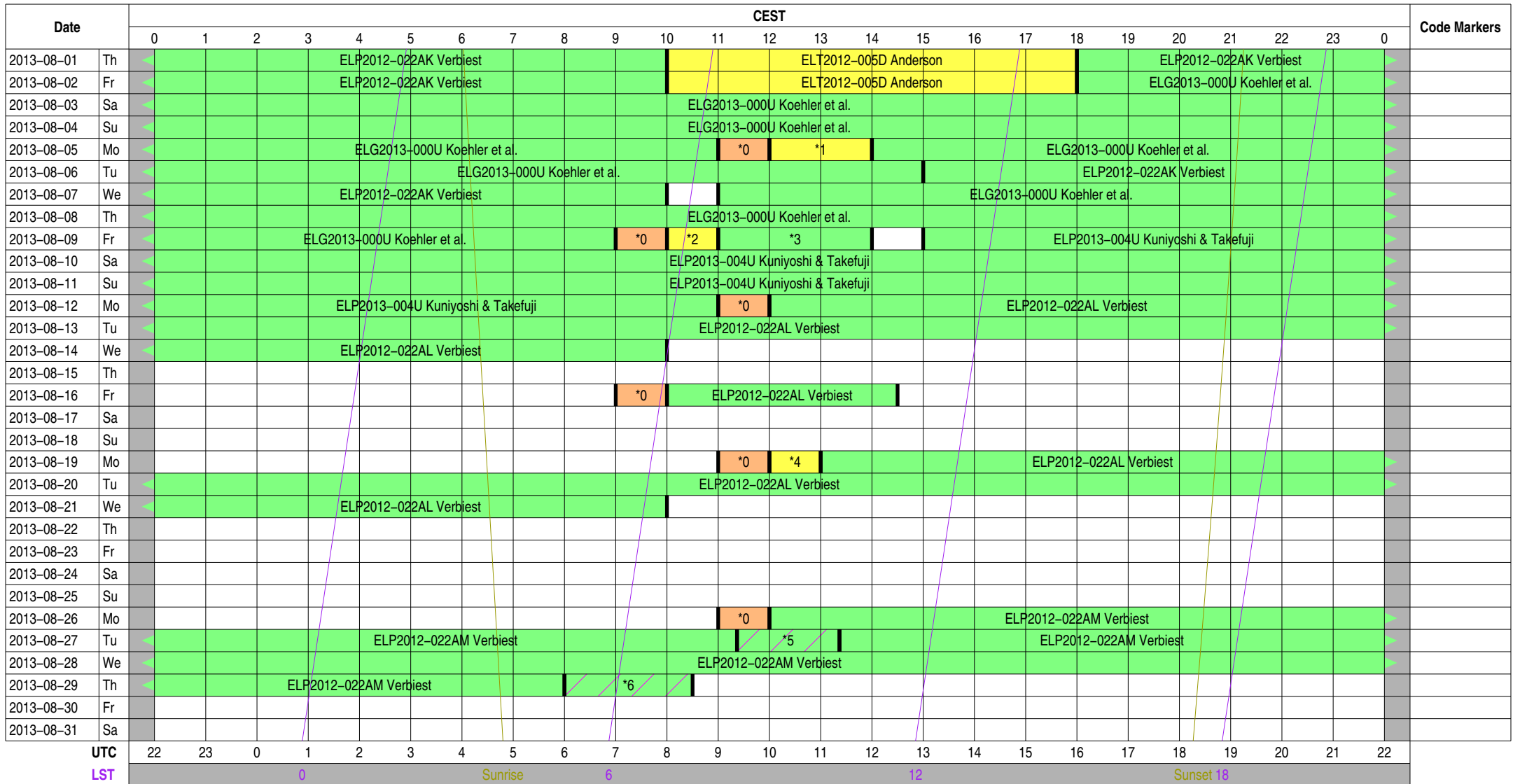
Other Code Markers

Color Meanings

- | | | | |
|---------------------------|--------------------------|-------------------|---------------------------|
| Science A (Astrometry) | Science O (Other) | ILT Mode | Piggyback Without Control |
| Science C (Cosmology) | Science P (Pulsar) | Effelsberg Mode | Experiment Warning |
| Science E (Extragalactic) | Science R (Cosmic Rays) | GLOW Mode | Override Possible |
| Science G (Galactic) | Science S (Solar System) | Juelich Mode | |
| Science H (Ionosphere) | Test Observation | Station Failure | |
| Science N (AGN) | Maintenance Mode | Piggyback Control | |

Observing Plan for IofarBN Computers MPIfR Effelsberg LOFAR Station 2013-08-01 through 2013-08-31

For any publication based on observations with the Effelsberg LOFAR station, please use the following acknowledgment: "Based on observations made with the Effelsberg LOFAR station of the Max-Planck-Institut für Radioastronomie (MPIfR) at Effelsberg."



Normal Experiment Code Markers

- 0 ELM2013-012 Kuniyoshi, Horneff
- 1 ELT2012-005D Anderson
- 2 ELT2012-005E Anderson
- 3 ELP2012-022AL Verbiest
- 4 ELT2012-005F Anderson
- 5 ELP2013-006 Verbiest, Kuniyoshi
- 6 ELS2013-001 Koehler et al.

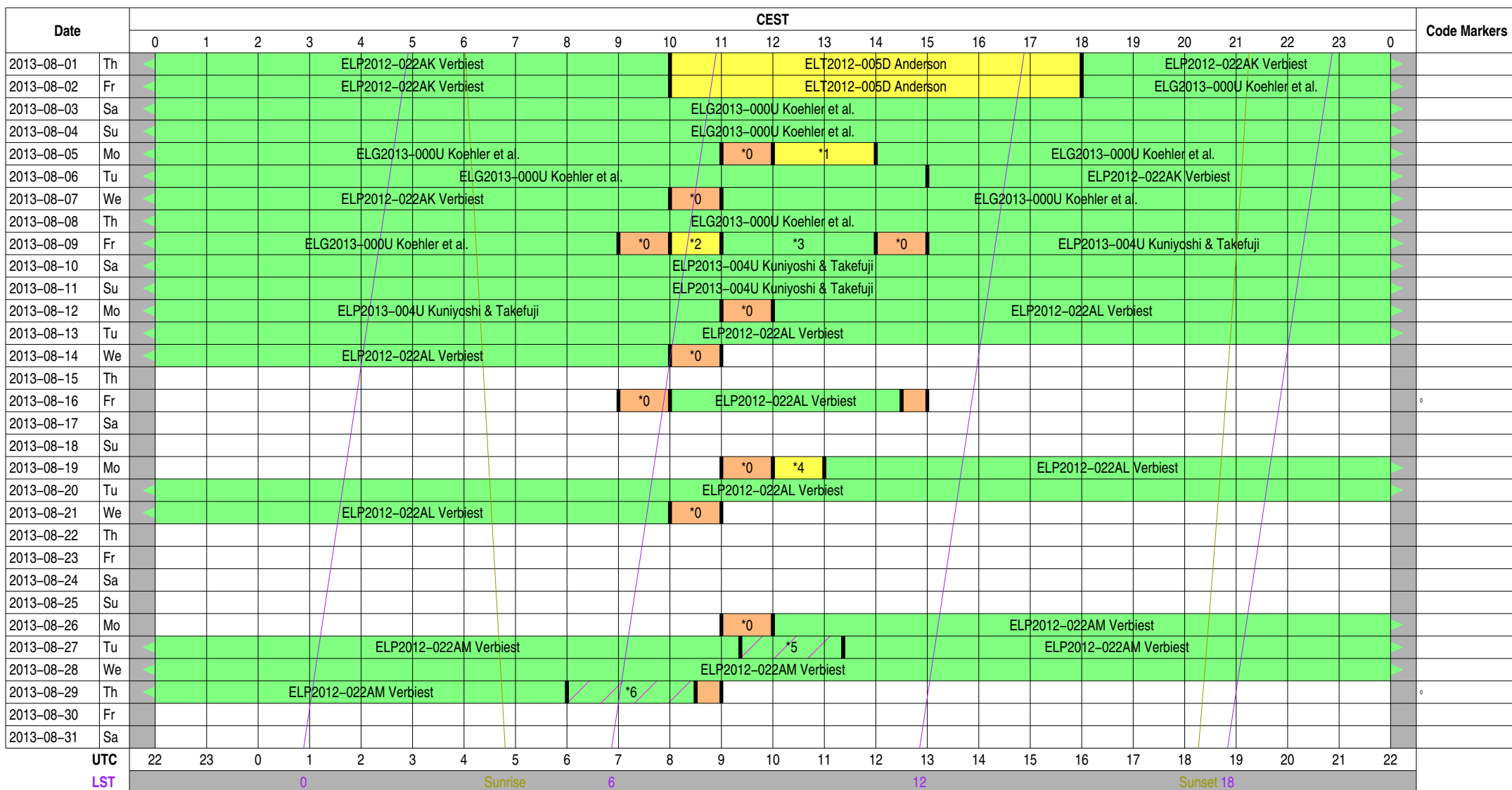
Other Code Markers

Color Meanings

- | | | | |
|---------------------------|--------------------------|-------------------|---------------------------|
| Science A (Astrometry) | Science O (Other) | ILT Mode | Piggyback Without Control |
| Science C (Cosmology) | Science P (Pulsar) | Effelsberg Mode | Experiment Warning |
| Science E (Extragalactic) | Science R (Cosmic Rays) | GLOW Mode | Override Possible |
| Science G (Galactic) | Science S (Solar System) | Juelich Mode | |
| Science H (Ionosphere) | Test Observation | Station Failure | |
| Science N (AGN) | Maintenance Mode | Piggyback Control | |

Observing Plan for Iofarx Computer MPIfR Effelsberg LOFAR Station 2013-08-01 through 2013-08-31

For any publication based on observations with the Effelsberg LOFAR station, please use the following acknowledgment: "Based on observations made with the Effelsberg LOFAR station of the Max-Planck-Institut für Radioastronomie (MPIfR) at Effelsberg."



Normal Experiment Code Markers

- 0 ELM2013-012 Kuniyoshi, Horneff
- 1 ELT2012-005D Anderson
- 2 ELT2012-005E Anderson
- 3 ELP2012-022AL Verbiest
- 4 ELT2012-005F Anderson
- 5 ELP2013-006 Verbiest, Kuniyoshi
- 6 ELS2013-001 Koehler et al.

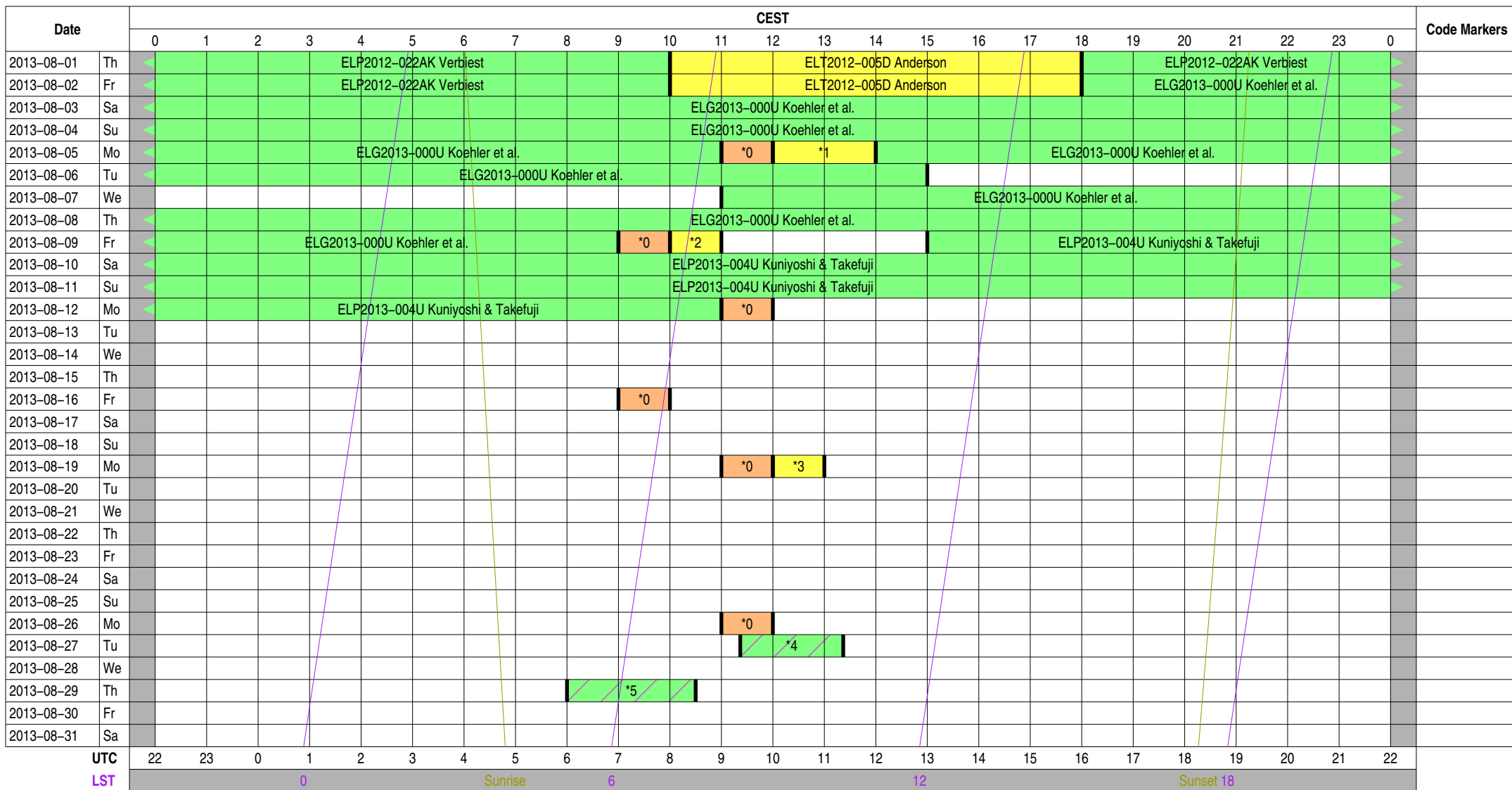
Other Code Markers

Color Meanings

- | | | | |
|---------------------------|--------------------------|-------------------|---------------------------|
| Science A (Astrometry) | Science O (Other) | ILT Mode | Piggyback Without Control |
| Science C (Cosmology) | Science P (Pulsar) | Effelsberg Mode | Experiment Warning |
| Science E (Extragalactic) | Science R (Cosmic Rays) | GLOW Mode | Override Possible |
| Science G (Galactic) | Science S (Solar System) | Juelich Mode | |
| Science H (Ionosphere) | Test Observation | Station Failure | |
| Science N (AGN) | Maintenance Mode | Piggyback Control | |

Observing Plan for Iofarsrv Computer MPIfR Effelsberg LOFAR Station 2013-08-01 through 2013-08-31

For any publication based on observations with the Effelsberg LOFAR station, please use the following acknowledgment: "Based on observations made with the Effelsberg LOFAR station of the Max-Planck-Institut für Radioastronomie (MPIfR) at Effelsberg."



Normal Experiment Code Markers

- 0 ELM2013-012 Kuniyoshi, Horneff
- 1 ELT2012-005D Anderson
- 2 ELT2012-005E Anderson
- 3 ELT2012-005F Anderson
- 4 ELP2013-006 Verbiest, Kuniyoshi
- 5 ELS2013-001 Koehler et al.

Other Code Markers

Color Meanings

- Science A (Astrometry)
- Science C (Cosmology)
- Science E (Extragalactic)
- Science G (Galactic)
- Science H (Ionosphere)
- Science N (AGN)
- Science O (Other)
- Science P (Pulsar)
- Science R (Cosmic Rays)
- Science S (Solar System)
- Test Observation
- Maintenance Mode
- ILT Mode
- Effelsberg Mode
- GLOW Mode
- Juelich Mode
- Station Failure
- Piggyback Control
- Piggyback Without Control
- Experiment Warning
- Override Possible

Observing Plan for LOFAR Fiber Connection

MPIfR Effelsberg LOFAR Station

2013-08-01 through 2013-08-31

For any publication based on observations with the Effelsberg LOFAR station, please use the following acknowledgment: "Based on observations made with the Effelsberg LOFAR station of the Max-Planck-Institut für Radioastronomie (MPIfR) at Effelsberg."

Date	CEST																								Code Markers			
	0	1	2	3	4	5	6	7	8	9	10	11	12	13	14	15	16	17	18	19	20	21	22	23		0		
2013-08-01	Th	ELI2013-000 LT Operations																										
2013-08-02	Fr	ELI2013-000 LT Operations																										
2013-08-03	Sa	ELI2013-000 LT Operations																										
2013-08-04	Su	ELI2013-000 LT Operations																										
2013-08-05	Mo	ELI2013-000 ILT Operations								*0	*1																	
2013-08-06	Tu																											
2013-08-07	We									*0	ELI2013-000 ILT Operations																	
2013-08-08	Th	ELI2013-000 LT Operations																										
2013-08-09	Fr	ELI2013-000 ILT Operations								*0	*2	*0	ELI2013-000 ILT Operations															
2013-08-10	Sa	ELI2013-000 LT Operations																										
2013-08-11	Su	ELI2013-000 LT Operations																										
2013-08-12	Mo	ELI2013-000 ILT Operations								*0																		
2013-08-13	Tu																											
2013-08-14	We									*0	ELI2013-000 ILT Operations																	
2013-08-15	Th	ELI2013-000 LT Operations																										
2013-08-16	Fr	ELI2013-000 ILT Operations								*0	ELI2013-000 ILT Operations															°		
2013-08-17	Sa	ELI2013-000 LT Operations																										
2013-08-18	Su	ELI2013-000 LT Operations																										
2013-08-19	Mo	ELI2013-000 ILT Operations								*0	*3																	
2013-08-20	Tu																											
2013-08-21	We									*0	ELI2013-000 ILT Operations																	
2013-08-22	Th	ELI2013-000 LT Operations																										
2013-08-23	Fr	ELI2013-000 LT Operations																										
2013-08-24	Sa	ELI2013-000 LT Operations																										
2013-08-25	Su	ELI2013-000 LT Operations																										
2013-08-26	Mo	ELI2013-000 ILT Operations								*0																		
2013-08-27	Tu									*4																		
2013-08-28	We																											
2013-08-29	Th									*0	ELI2013-000 ILT Operations															°		
2013-08-30	Fr	ELI2013-000 LT Operations																										
2013-08-31	Sa	ELI2013-000 LT Operations																										

UTC 22 23 0 1 2 3 4 5 6 7 8 9 10 11 12 13 14 15 16 17 18 19 20 21 22
 LST 0 Sunrise 6 12 Sunset 18

Normal Experiment Code Markers

- 0 ELM2013-012 Kuniyoshi, Horneff
- 1 ELT2012-005D Anderson
- 2 ELT2012-005E Anderson
- 3 ELT2012-005F Anderson
- 4 ELP2013-006 Verbiest, Kuniyosh

Other Code Markers

Color Meanings

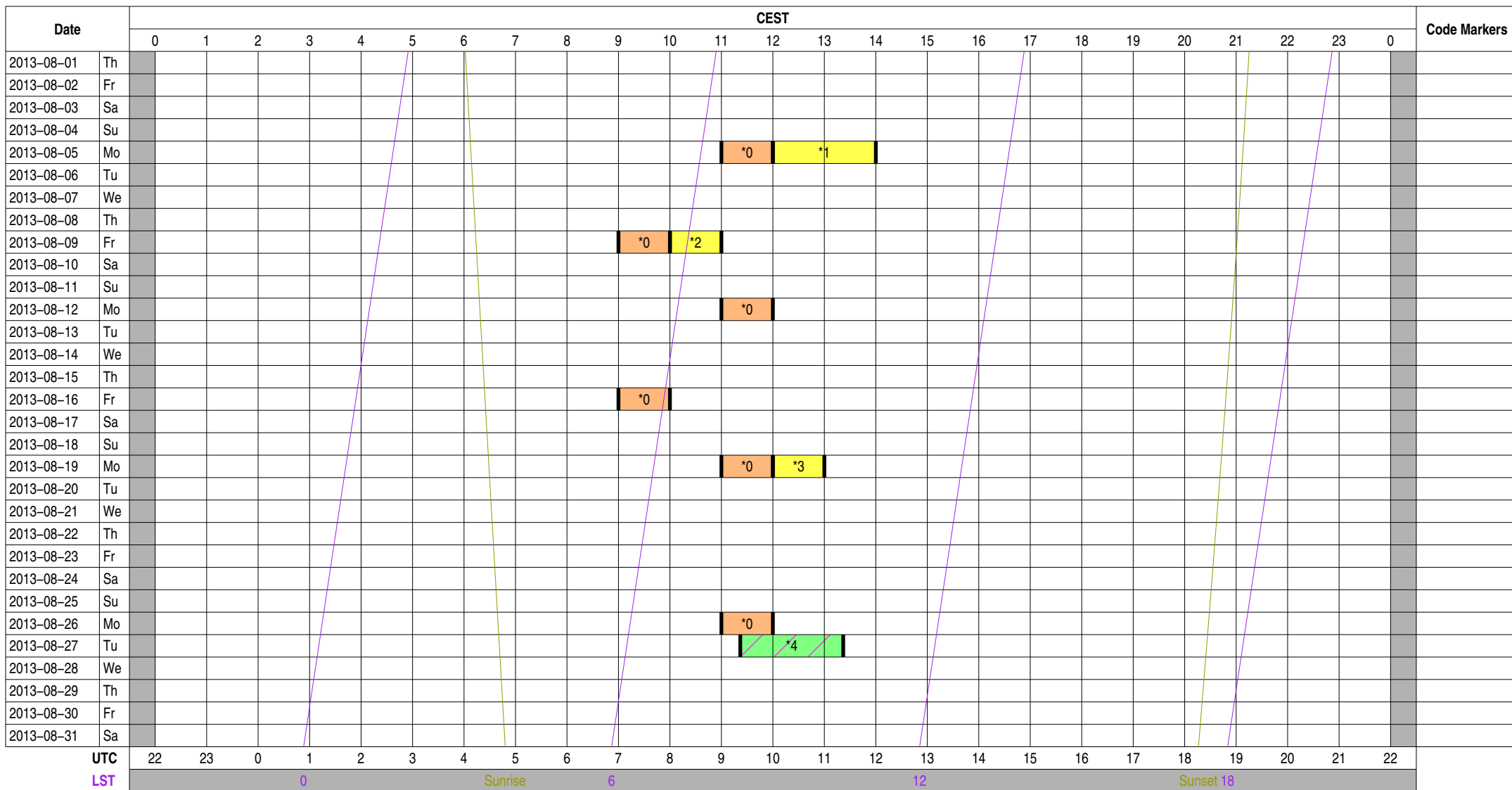
- | | | | |
|---------------------------|--------------------------|-------------------|---------------------------|
| Science A (Astrometry) | Science O (Other) | ILT Mode | Piggyback Without Control |
| Science C (Cosmology) | Science P (Pulsar) | Effelsberg Mode | Experiment Warning |
| Science E (Extragalactic) | Science R (Cosmic Rays) | GLOW Mode | Override Possible |
| Science G (Galactic) | Science S (Solar System) | Juelich Mode | |
| Science H (Ionosphere) | Test Observation | Station Failure | |
| Science N (AGN) | Maintenance Mode | Piggyback Control | |

Observing Plan for LOFAR Bonn--EF Fiber Connection

MPIfR Effelsberg LOFAR Station

2013-08-01 through 2013-08-31

For any publication based on observations with the Effelsberg LOFAR station, please use the following acknowledgment: "Based on observations made with the Effelsberg LOFAR station of the Max-Planck-Institut für Radioastronomie (MPIfR) at Effelsberg."



Normal Experiment Code Markers

- 0 ELM2013-012 Kuniyoshi, Horneff
- 1 ELT2012-005D Anderson
- 2 ELT2012-005E Anderson
- 3 ELT2012-005F Anderson
- 4 ELP2013-006 Verbiest, Kuniyosh

Other Code Markers

Color Meanings

- | | | | |
|---------------------------|--------------------------|-------------------|---------------------------|
| Science A (Astrometry) | Science O (Other) | ILT Mode | Piggyback Without Control |
| Science C (Cosmology) | Science P (Pulsar) | Effelsberg Mode | Experiment Warning |
| Science E (Extragalactic) | Science R (Cosmic Rays) | GLOW Mode | Override Possible |
| Science G (Galactic) | Science S (Solar System) | Juelich Mode | |
| Science H (Ionosphere) | Test Observation | Station Failure | |
| Science N (AGN) | Maintenance Mode | Piggyback Control | |

UTC

LST

0

Sunrise

6

12

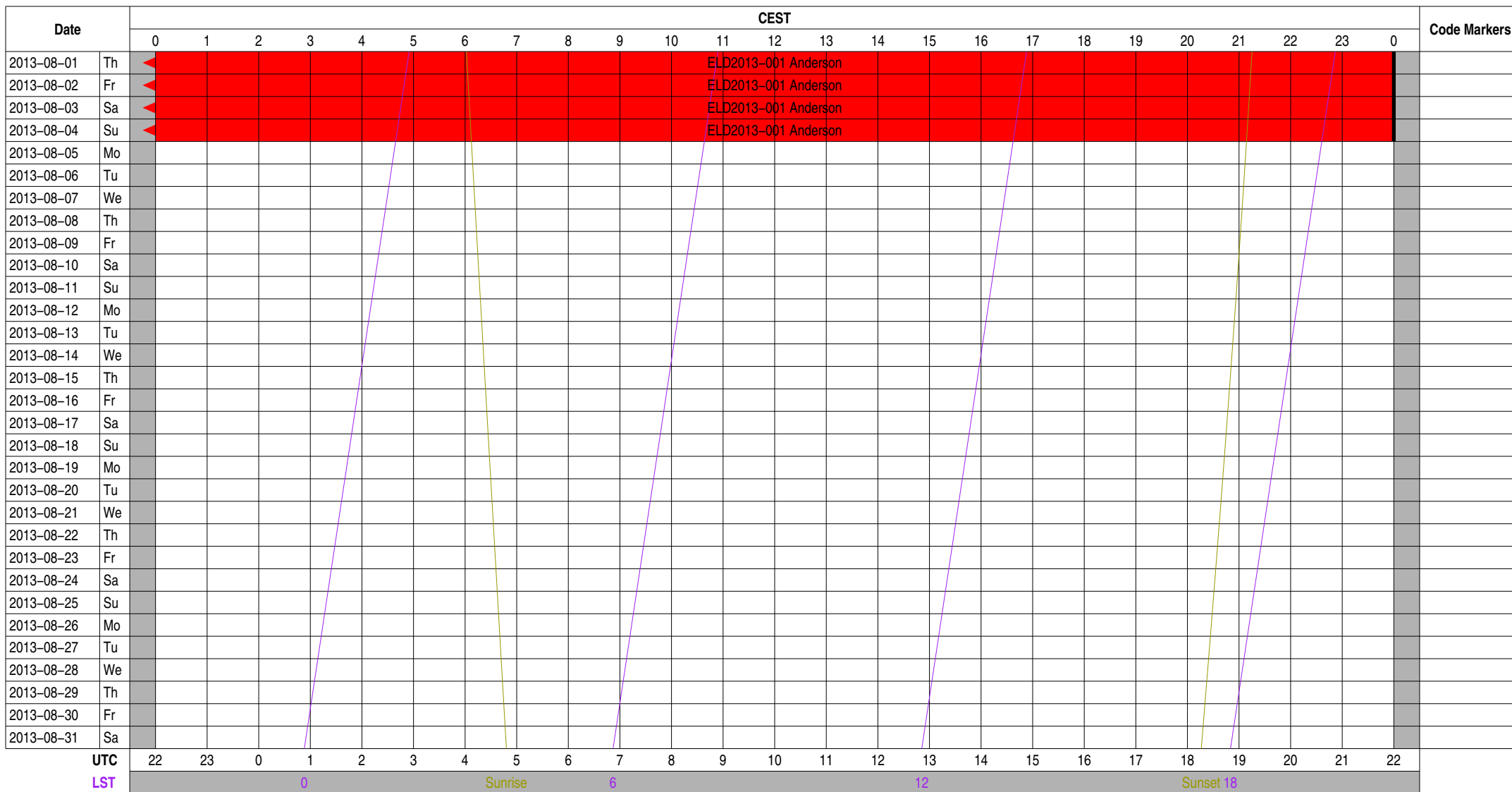
Sunset 18

Observing Plan for Operator On-Duty

MPIfR Effelsberg LOFAR Station

2013-08-01 through 2013-08-31

For any publication based on observations with the Effelsberg LOFAR station, please use the following acknowledgment: "Based on observations made with the Effelsberg LOFAR station of the Max-Planck-Institut für Radioastronomie (MPIfR) at Effelsberg."



Normal Experiment Code Markers

Other Code Markers

Color Meanings

- 100 m Operator
- Anderson
- Kuniyoshi
- Horneffer
- Other
- Unknown

Experiment Information for Normal Observations

ELG2013-000	Koehler et al.	jana@mpifr-bonn.mpg.de	+49 228 525 533	LC0_044 Studying large-scale polarization properties of the
ELG2013-000 U	Koehler et al.	jana@mpifr-bonn.mpg.de	+49 228 525 533	LC0_044 Studying large-scale polarization properties of the
ELG2013-000 U	Koehler et al.	jana@mpifr-bonn.mpg.de	+49 228 525 533	LC0_044 Studying large-scale polarization properties of the
ELG2013-000 U	Koehler et al.	jana@mpifr-bonn.mpg.de	+49 228 525 533	LC0_044 Studying large-scale polarization properties of the
ELI2013-000	ILT Operations	observer@astron.nl	+31 521 595 777	Main ILT Observations, ILT Operations only on-duty 9--17, M
ELI2013-000	ILT Operations	observer@astron.nl	+31 521 595 777	Main ILT Observations, ILT Operations only on-duty 9--17, M
ELI2013-000	ILT Operations	observer@astron.nl	+31 521 595 777	Main ILT Observations, ILT Operations only on-duty 9--17, M
ELI2013-000	ILT Operations	observer@astron.nl	+31 521 595 777	Main ILT Observations, ILT Operations only on-duty 9--17, M
ELI2013-000	ILT Operations	observer@astron.nl	+31 521 595 777	Main ILT Observations, ILT Operations only on-duty 9--17, M
ELI2013-000	ILT Operations	observer@astron.nl	+31 521 595 777	Main ILT Observations, ILT Operations only on-duty 9--17, M
ELI2013-000	ILT Operations	observer@astron.nl	+31 521 595 777	Main ILT Observations, ILT Operations only on-duty 9--17, M
ELI2013-000	ILT Operations	observer@astron.nl	+31 521 595 777	Main ILT Observations, ILT Operations only on-duty 9--17, M
ELM2013-012	Kuniyoshi, Horneffer, Anderson	lofar-ops@mpifr-bonn.mpg.de	+49 228 525 356	Handover operations for local to ILT mode (MPIfR time)
ELM2013-012	Kuniyoshi, Horneffer, Anderson	lofar-ops@mpifr-bonn.mpg.de	+49 228 525 356	Handover operations for local to ILT mode (MPIfR time)
ELM2013-012	Kuniyoshi, Horneffer, Anderson	lofar-ops@mpifr-bonn.mpg.de	+49 228 525 356	Handover operations for local to ILT mode (MPIfR time)
ELM2013-012	Kuniyoshi, Horneffer, Anderson	lofar-ops@mpifr-bonn.mpg.de	+49 228 525 356	Handover operations for local to ILT mode (MPIfR time)
ELM2013-012	Kuniyoshi, Horneffer, Anderson	lofar-ops@mpifr-bonn.mpg.de	+49 228 525 356	Handover operations for local to ILT mode (MPIfR time)
ELM2013-012	Kuniyoshi, Horneffer, Anderson	lofar-ops@mpifr-bonn.mpg.de	+49 228 525 356	Handover operations for local to ILT mode (MPIfR time)
ELM2013-012	Kuniyoshi, Horneffer, Anderson	lofar-ops@mpifr-bonn.mpg.de	+49 228 525 356	Handover operations for local to ILT mode (MPIfR time)
ELM2013-012	Kuniyoshi, Horneffer, Anderson	lofar-ops@mpifr-bonn.mpg.de	+49 228 525 356	Handover operations for local to ILT mode (MPIfR time)
ELM2013-012	Kuniyoshi, Horneffer, Anderson	lofar-ops@mpifr-bonn.mpg.de	+49 228 525 356	Handover operations for local to ILT mode (MPIfR time)
ELM2013-012	Kuniyoshi, Horneffer, Anderson	lofar-ops@mpifr-bonn.mpg.de	+49 228 525 356	Handover operations for local to ILT mode (MPIfR time)
ELM2013-012	Kuniyoshi, Horneffer, Anderson	lofar-ops@mpifr-bonn.mpg.de	+49 228 525 356	Handover operations for local to ILT mode (MPIfR time)
ELM2013-012	Kuniyoshi, Horneffer, Anderson	lofar-ops@mpifr-bonn.mpg.de	+49 228 525 356	Handover operations for local to ILT mode (MPIfR time)
ELM2013-012	Kuniyoshi, Horneffer, Anderson	lofar-ops@mpifr-bonn.mpg.de	+49 228 525 356	Handover operations for local to ILT mode (MPIfR time)
ELP2012-022	Verbiest	verbiest@mpifr-bonn.mpg.de	+49 228 525 246	Assessing the Timing Potential of LOFAR for Pulsars
ELP2012-022 AK	Verbiest	verbiest@mpifr-bonn.mpg.de	+49 228 525 246	Assessing the Timing Potential of LOFAR for Pulsars
ELP2012-022 AK	Verbiest	verbiest@mpifr-bonn.mpg.de	+49 228 525 246	Assessing the Timing Potential of LOFAR for Pulsars
ELP2012-022 AK	Verbiest	verbiest@mpifr-bonn.mpg.de	+49 228 525 246	Assessing the Timing Potential of LOFAR for Pulsars
ELP2012-022 AL	Verbiest	verbiest@mpifr-bonn.mpg.de	+49 228 525 246	Assessing the Timing Potential of LOFAR for Pulsars
ELP2012-022 AL	Verbiest	verbiest@mpifr-bonn.mpg.de	+49 228 525 246	Assessing the Timing Potential of LOFAR for Pulsars
ELP2012-022 AL	Verbiest	verbiest@mpifr-bonn.mpg.de	+49 228 525 246	Assessing the Timing Potential of LOFAR for Pulsars
ELP2012-022 AL	Verbiest	verbiest@mpifr-bonn.mpg.de	+49 228 525 246	Assessing the Timing Potential of LOFAR for Pulsars
ELP2012-022 AM	Verbiest	verbiest@mpifr-bonn.mpg.de	+49 228 525 246	Assessing the Timing Potential of LOFAR for Pulsars
ELP2012-022 AM	Verbiest	verbiest@mpifr-bonn.mpg.de	+49 228 525 246	Assessing the Timing Potential of LOFAR for Pulsars
ELP2013-004	Kuniyoshi & Takefuji	mkuniyos@mpifr-bonn.mpg.de	+49 228 525 505	Simultaneous observations of giant single pulses of Crab PS
ELP2013-004 U	Kuniyoshi & Takefuji	mkuniyos@mpifr-bonn.mpg.de	+49 228 525 505	Simultaneous observations of giant single pulses of Crab PS
ELP2013-006	Verbiest, Kuniyoshi	joris.verbiest@gmail.com	+49 521 106 3184	Mapping the Solar Heliosphere with LOFAR Observations of Pu
ELP2013-006	Verbiest, Kuniyoshi	joris.verbiest@gmail.com	+49 521 106 3184	Mapping the Solar Heliosphere with LOFAR Observations of Pu
ELS2013-001	Koehler et al.	jana@mpifr-bonn.mpg.de	+49 228 525 533	Observation of Jupiter Io-A Event
ELS2013-001	Koehler et al.	jana@mpifr-bonn.mpg.de	+49 228 525 533	Observation of Jupiter Io-A Event
ELT2012-005	Anderson	anderson@mpifr-bonn.mpg.de	+49 228 525 356	8 bit mode testing with LuMP
ELT2012-005 D	Anderson	anderson@mpifr-bonn.mpg.de	+49 228 525 356	8 bit mode testing with LuMP
ELT2012-005 D	Anderson	anderson@mpifr-bonn.mpg.de	+49 228 525 356	8 bit mode testing with LuMP
ELT2012-005 D	Anderson	anderson@mpifr-bonn.mpg.de	+49 228 525 356	8 bit mode testing with LuMP
ELT2012-005 E	Anderson	anderson@mpifr-bonn.mpg.de	+49 228 525 356	8 bit mode testing with LuMP
ELT2012-005 F	Anderson	anderson@mpifr-bonn.mpg.de	+49 228 525 356	8 bit mode testing with LuMP

Experiment Information for Other Actions

Experiment Information for Operator On-Duty Schedule

ELD2013-001	Anderson	anderson@mpifr-bonn.mpg.de	+49 228 525 356	Project Manager
ELD2013-001	Anderson	anderson@mpifr-bonn.mpg.de	+49 228 525 356	Project Manager

Time Usage [hours] for Other Actions

Experiment Code	station	TBB	HBA	LBH	LBL	interfe	lofarAN	lofarBN	lofarx	lofarsr	fiber	BN--EF_	duty
-----------------	---------	-----	-----	-----	-----	---------	---------	---------	--------	---------	-------	---------	------

