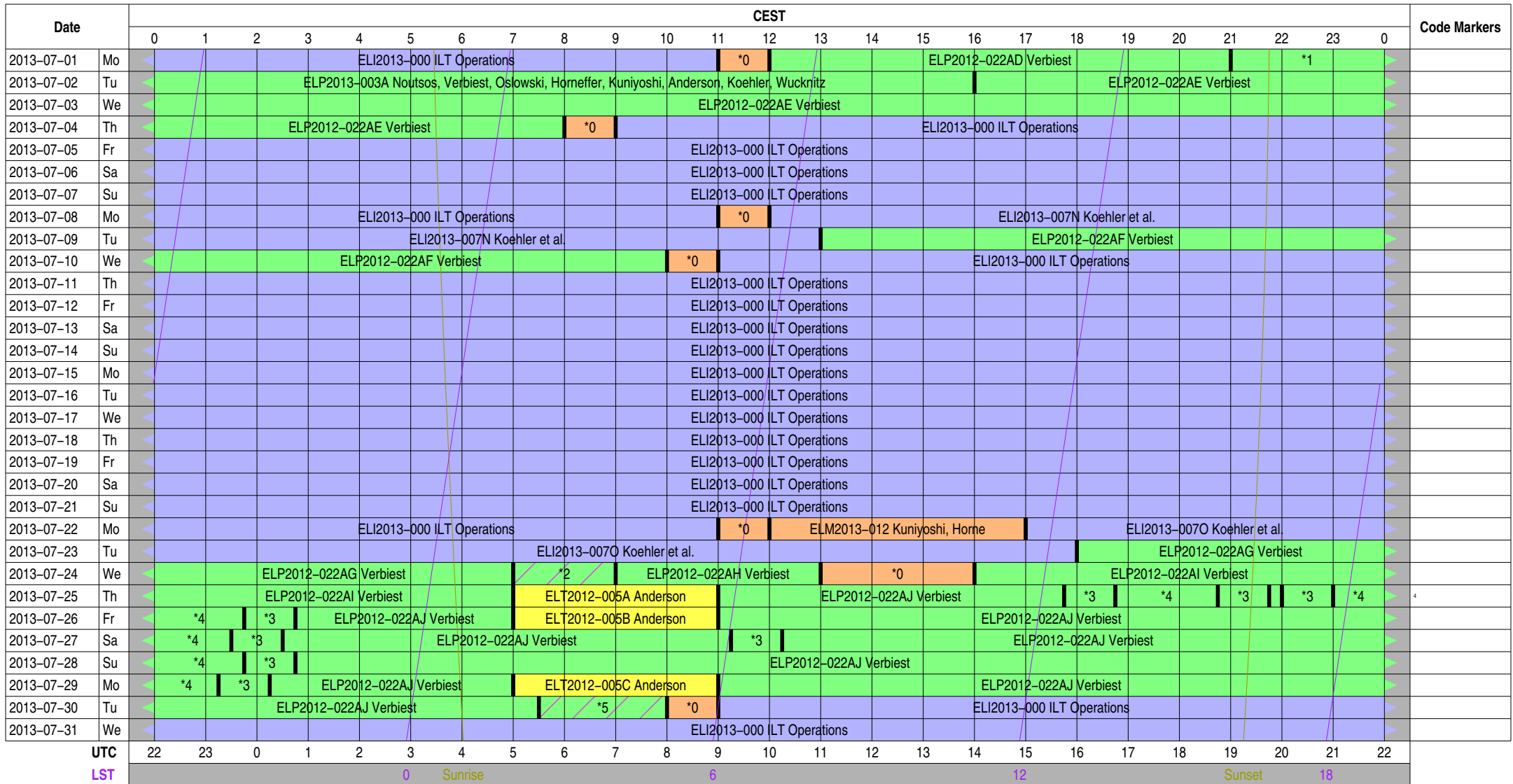


Observing Plan for Station Control (LCU)

MPIfR Effelsberg LOFAR Station

2013-07-01 through 2013-07-31



Normal Experiment Code Markers

- 0 ELM2013-012 Kuniyoshi, Horneff
- 1 ELP2013-003A Noutsos, Verbiest,
- 2 ELP2013-004 Kuniyoshi & Takefu
- 3 ELP2013-005A Noutsos, Verbiest,
- 4 ELP2012-022AJ Verbiest
- 5 ELS2013-000A Koehler et al.

Other Code Markers

Color Meanings

- | | | |
|---------------------------|--------------------------|-------------------|
| Science A (Astrometry) | Science O (Other) | ILT Mode |
| Science C (Cosmology) | Science P (Pulsar) | Effelsberg Mode |
| Science E (Extragalactic) | Science R (Cosmic Rays) | GLOW Mode |
| Science G (Galactic) | Science S (Solar System) | Juelich Mode |
| Science H (Ionosphere) | Test Observation | Station Failure |
| Science N (AGN) | Maintenance Mode | Piggyback Control |

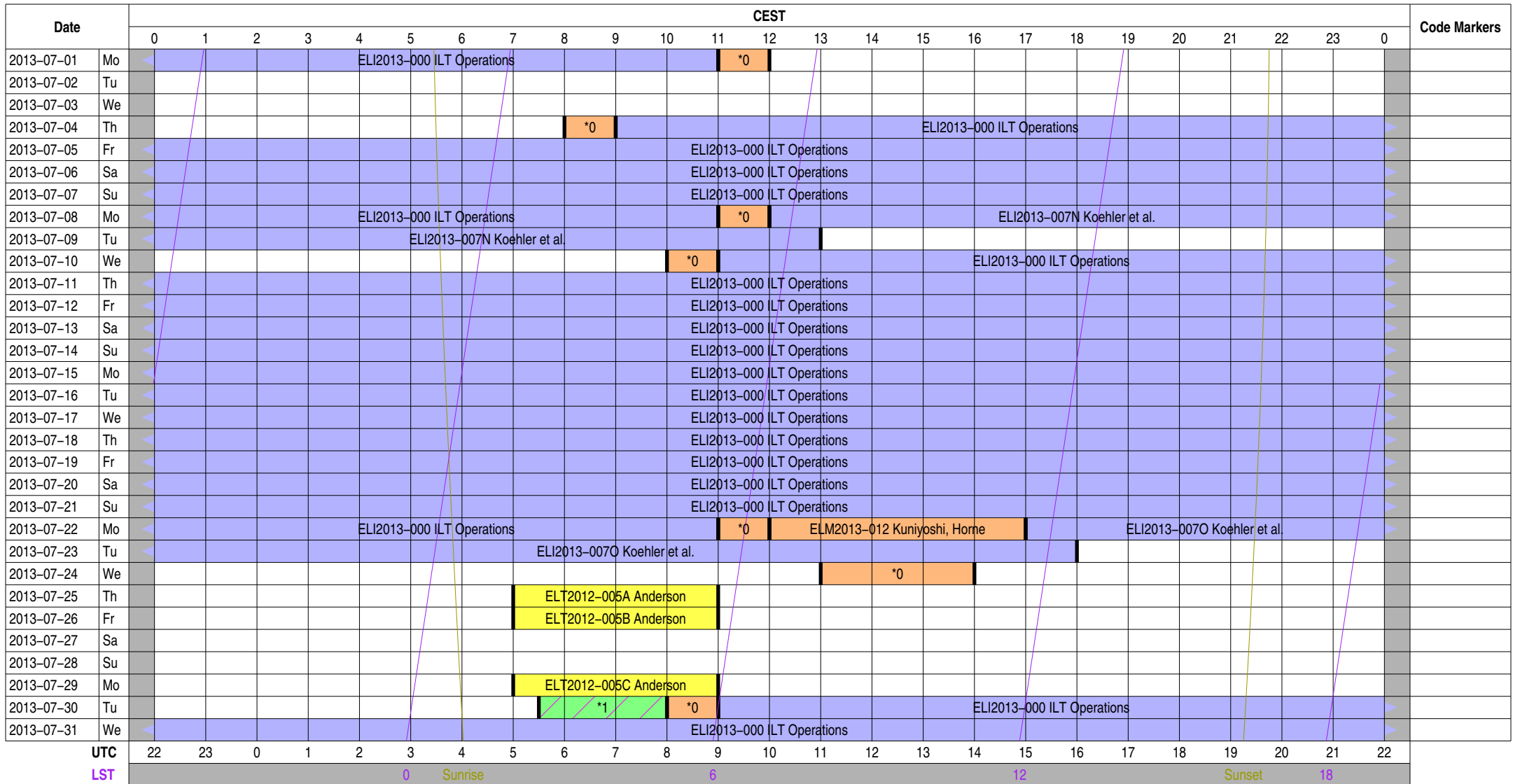
- Piggyback Without Control
- Experiment Warning
- Override Possible

Observing Plan for Transient Buffer Boards

MPIfR Effelsberg LOFAR Station

2013-07-01 through 2013-07-31

For any publication based on observations with the Effelsberg LOFAR station, please use the following acknowledgment: "Based on observations made with the Effelsberg LOFAR station of the Max-Planck-Institut für Radioastronomie (MPIfR) at Effelsberg."



Normal Experiment Code Markers

- 0 ELM2013-012 Kuniyoshi, Horneff
- 1 ELS2013-000A Koehler et al.

Other Code Markers

Color Meanings

- | | | | |
|---------------------------|--------------------------|-------------------|---------------------------|
| Science A (Astrometry) | Science O (Other) | ILT Mode | Piggyback Without Control |
| Science C (Cosmology) | Science P (Pulsar) | Effelsberg Mode | Experiment Warning |
| Science E (Extragalactic) | Science R (Cosmic Rays) | GLOW Mode | Override Possible |
| Science G (Galactic) | Science S (Solar System) | Juelich Mode | |
| Science H (Ionosphere) | Test Observation | Station Failure | |
| Science N (AGN) | Maintenance Mode | Piggyback Control | |

Observing Plan for HBA MPIfR Effelsberg LOFAR Station 2013-07-01 through 2013-07-31

For any publication based on observations with the Effelsberg LOFAR station, please use the following acknowledgment: "Based on observations made with the Effelsberg LOFAR station of the Max-Planck-Institut für Radioastronomie (MPIfR) at Effelsberg."

Date	CEST																								Code Markers											
	0	1	2	3	4	5	6	7	8	9	10	11	12	13	14	15	16	17	18	19	20	21	22	23		0										
2013-07-01	Mo	ELI2013-000 ILT Operations										*0	ELP2012-022AD Verbiest										*1													
2013-07-02	Tu	ELP2013-003A Noutsos, Verbiest, Osowski, Horneffer, Kuniyoshi, Anderson, Koehler, Wucknitz																																		
2013-07-03	We	ELP2012-022AE Verbiest																																		
2013-07-04	Th	ELP2012-022AE Verbiest										*0	ELI2013-000 ILT Operations																							
2013-07-05	Fr	ELI2013-000 ILT Operations																																		
2013-07-06	Sa	ELI2013-000 ILT Operations																																		
2013-07-07	Su	ELI2013-000 ILT Operations																																		
2013-07-08	Mo	ELI2013-000 ILT Operations										*0	ELI2013-007N Koehler et al.																							
2013-07-09	Tu	ELI2013-007N Koehler et al.																																		
2013-07-10	We	ELP2012-022AF Verbiest										*0	ELI2013-000 ILT Operations																							
2013-07-11	Th	ELI2013-000 ILT Operations																																		
2013-07-12	Fr	ELI2013-000 ILT Operations																																		
2013-07-13	Sa	ELI2013-000 ILT Operations																																		
2013-07-14	Su	ELI2013-000 ILT Operations																																		
2013-07-15	Mo	ELI2013-000 ILT Operations																																		
2013-07-16	Tu	ELI2013-000 ILT Operations																																		
2013-07-17	We	ELI2013-000 ILT Operations																																		
2013-07-18	Th	ELI2013-000 ILT Operations																																		
2013-07-19	Fr	ELI2013-000 ILT Operations																																		
2013-07-20	Sa	ELI2013-000 ILT Operations																																		
2013-07-21	Su	ELI2013-000 ILT Operations																																		
2013-07-22	Mo	ELI2013-000 ILT Operations										*0	ELM2013-012 Kuniyoshi, Horne										ELI2013-007O Koehler et al.													
2013-07-23	Tu	ELI2013-007O Koehler et al.										ELP2012-022AG Verbiest																								
2013-07-24	We	ELP2012-022AG Verbiest										*2	ELP2012-022AH Verbiest										*0	ELP2012-022AI Verbiest												
2013-07-25	Th	ELP2012-022AI Verbiest										ELT2012-005A Anderson										ELP2012-022AJ Verbiest										*3	*4	*3	*3	*4
2013-07-26	Fr	*4	*3	ELP2012-022AJ Verbiest										ELT2012-005B Anderson										ELP2012-022AJ Verbiest												
2013-07-27	Sa	*4	*3	ELP2012-022AJ Verbiest										*3	ELP2012-022AJ Verbiest																					
2013-07-28	Su	*4	*3	ELP2012-022AJ Verbiest										ELP2012-022AJ Verbiest																						
2013-07-29	Mo	*4	*3	ELP2012-022AJ Verbiest										ELT2012-005C Anderson										ELP2012-022AJ Verbiest												
2013-07-30	Tu	ELP2012-022AJ Verbiest										*0	ELI2013-000 ILT Operations																							
2013-07-31	We	ELI2013-000 ILT Operations																																		

UTC	22	23	0	1	2	3	4	5	6	7	8	9	10	11	12	13	14	15	16	17	18	19	20	21	22
LST						0	Sunrise					6							12			Sunset			18

Normal Experiment Code Markers

- 0 ELM2013-012 Kuniyoshi, Horneff
- 1 ELP2013-003A Noutsos, Verbiest,
- 2 ELP2013-004 Kuniyoshi & Takefu
- 3 ELP2013-005A Noutsos, Verbiest,
- 4 ELP2012-022AJ Verbiest

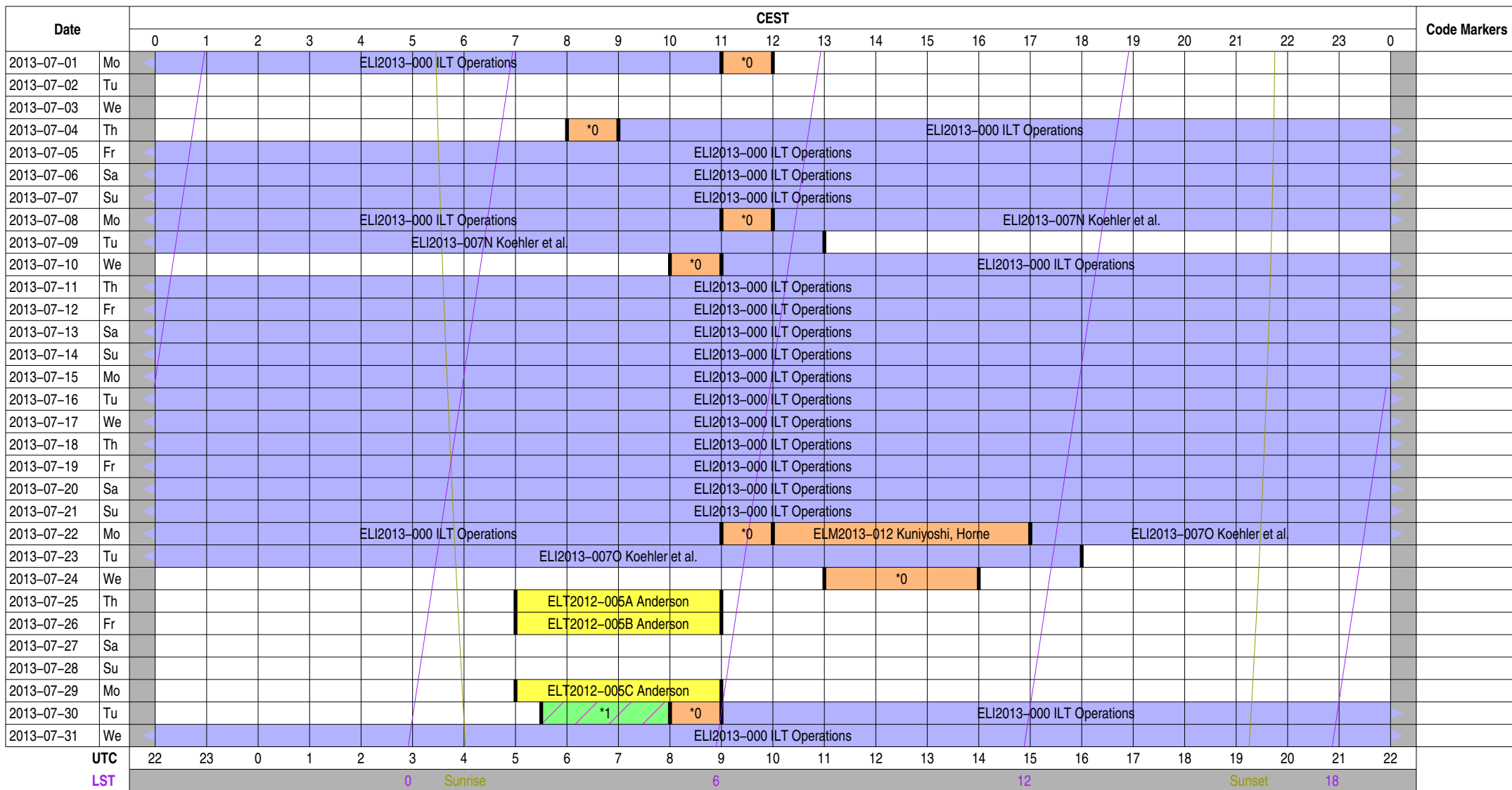
Other Code Markers

Color Meanings

Science A (Astrometry)	Science O (Other)	ILT Mode	Piggyback Without Control
Science C (Cosmology)	Science P (Pulsar)	Effelsberg Mode	Experiment Warning
Science E (Extragalactic)	Science R (Cosmic Rays)	GLOW Mode	Override Possible
Science G (Galactic)	Science S (Solar System)	Juelich Mode	
Science H (Ionosphere)	Test Observation	Station Failure	
Science N (AGN)	Maintenance Mode	Piggyback Control	

Observing Plan for Low Band High (LBA) MPIfR Effelsberg LOFAR Station 2013-07-01 through 2013-07-31

For any publication based on observations with the Effelsberg LOFAR station, please use the following acknowledgment: "Based on observations made with the Effelsberg LOFAR station of the Max-Planck-Institut für Radioastronomie (MPIfR) at Effelsberg."



Normal Experiment Code Markers

- 0 ELM2013-012 Kuniyoshi, Horneff
- 1 ELS2013-000A Koehler et al.

Other Code Markers

Color Meanings

- | | | | |
|---------------------------|--------------------------|-------------------|---------------------------|
| Science A (Astrometry) | Science O (Other) | ILT Mode | Piggyback Without Control |
| Science C (Cosmology) | Science P (Pulsar) | Effelsberg Mode | Experiment Warning |
| Science E (Extragalactic) | Science R (Cosmic Rays) | GLOW Mode | Override Possible |
| Science G (Galactic) | Science S (Solar System) | Juelich Mode | |
| Science H (Ionosphere) | Test Observation | Station Failure | |
| Science N (AGN) | Maintenance Mode | Piggyback Control | |

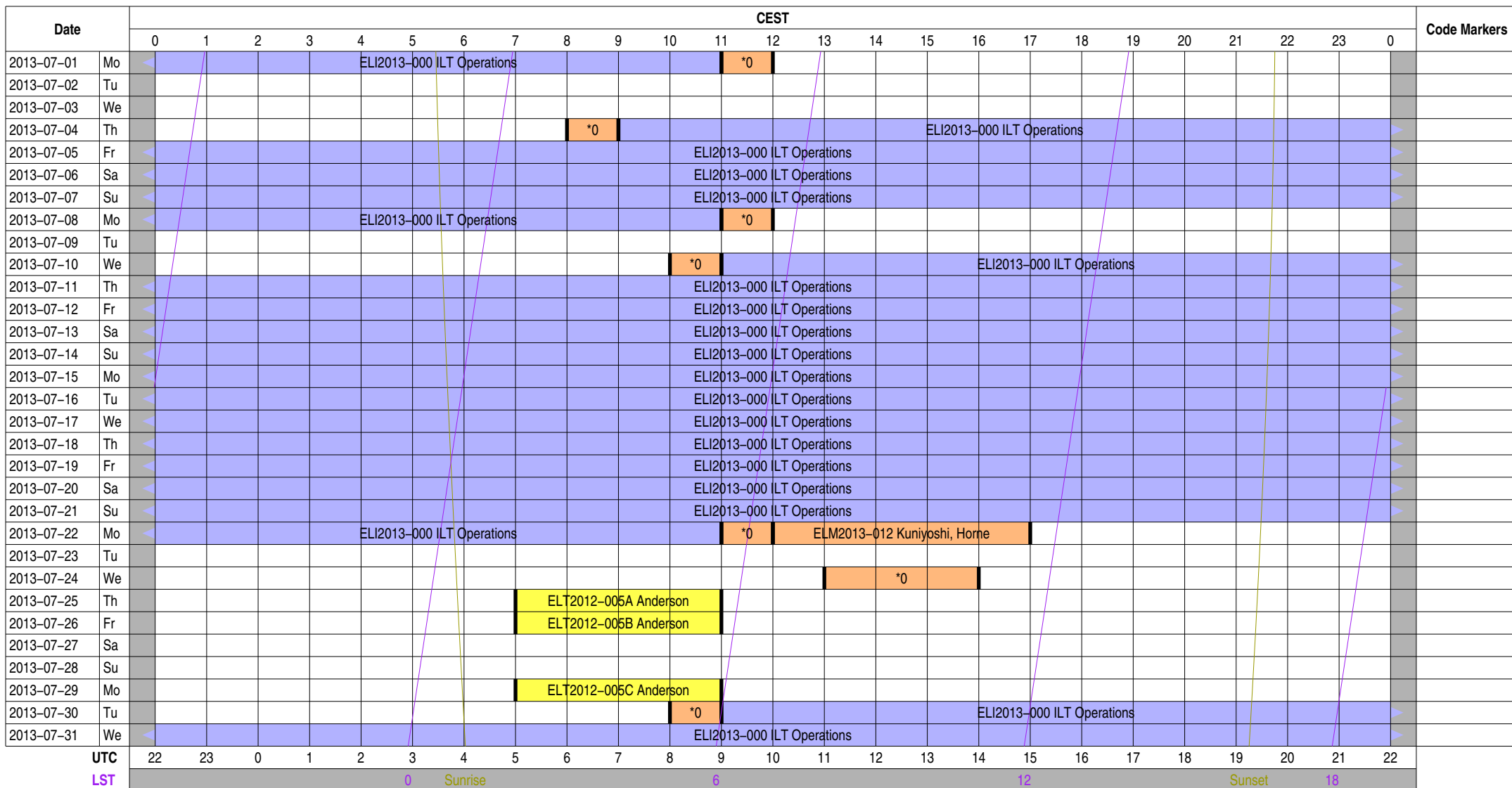
UTC 22 23 0 1 2 3 4 5 6 7 8 9 10 11 12 13 14 15 16 17 18 19 20 21 22
 LST 0 Sunrise 6 12 Sunset 18

Observing Plan for Low Band Low, Unused Inputs

MPIfR Effelsberg LOFAR Station

2013-07-01 through 2013-07-31

For any publication based on observations with the Effelsberg LOFAR station, please use the following acknowledgment: "Based on observations made with the Effelsberg LOFAR station of the Max-Planck-Institut für Radioastronomie (MPIfR) at Effelsberg."



Normal Experiment Code Markers

0 ELM2013-012 Kuniyoshi, Horneff

Other Code Markers

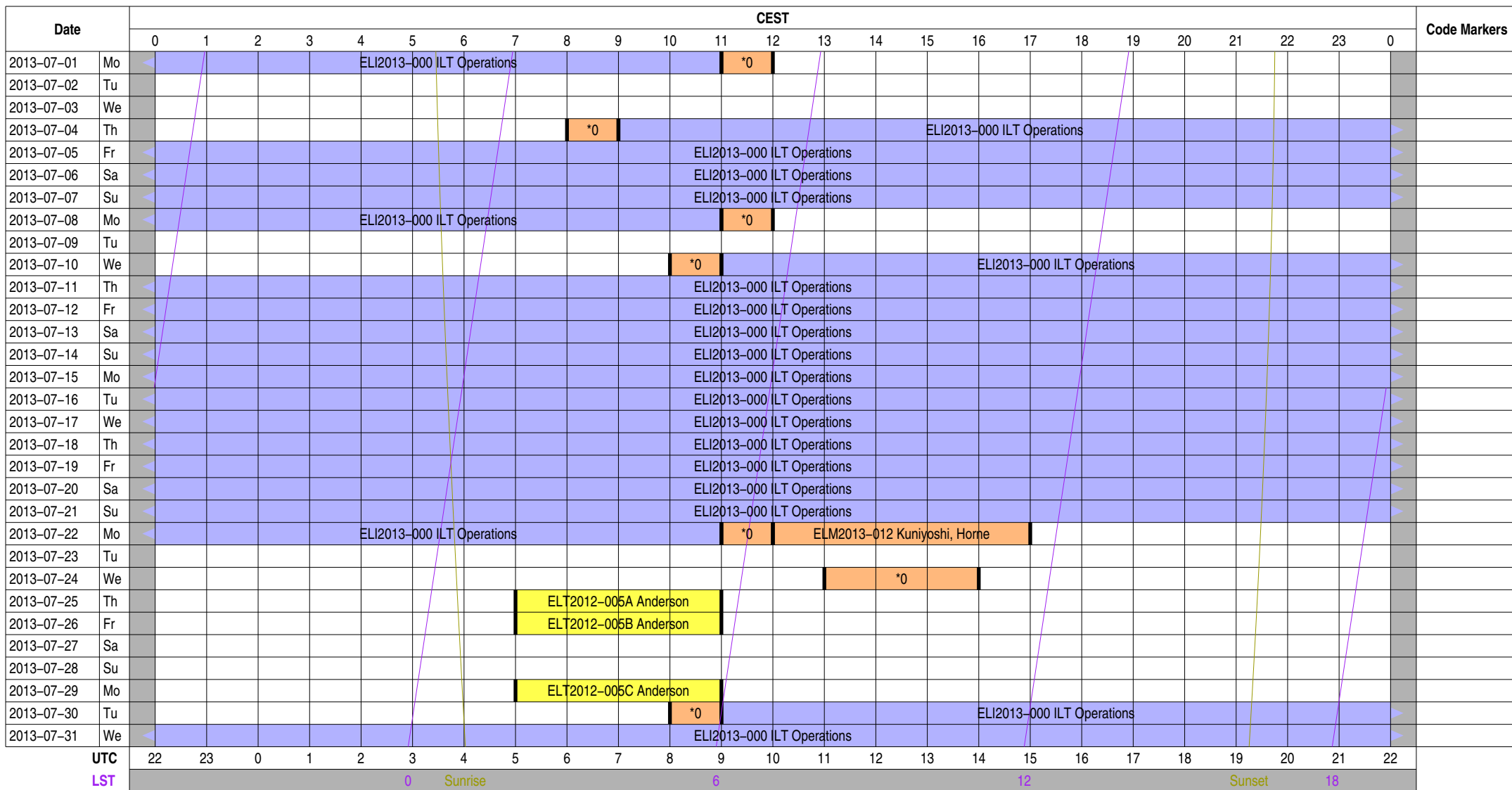
Color Meanings

Science A (Astrometry)	Science O (Other)	ILT Mode	Piggyback Without Control
Science C (Cosmology)	Science P (Pulsar)	Effelsberg Mode	Experiment Warning
Science E (Extragalactic)	Science R (Cosmic Rays)	GLOW Mode	Override Possible
Science G (Galactic)	Science S (Solar System)	Juelich Mode	
Science H (Ionosphere)	Test Observation	Station Failure	
Science N (AGN)	Maintenance Mode	Piggyback Control	



Observing Plan for Station Interferometer MPIfR Effelsberg LOFAR Station 2013-07-01 through 2013-07-31

For any publication based on observations with the Effelsberg LOFAR station, please use the following acknowledgment: "Based on observations made with the Effelsberg LOFAR station of the Max-Planck-Institut für Radioastronomie (MPIfR) at Effelsberg."



Normal Experiment Code Markers

0 ELM2013-012 Kuniyoshi, Horneff

Other Code Markers

Color Meanings

Science A (Astrometry)	Science O (Other)	ILT Mode	Piggyback Without Control
Science C (Cosmology)	Science P (Pulsar)	Effelsberg Mode	Experiment Warning
Science E (Extragalactic)	Science R (Cosmic Rays)	GLOW Mode	Override Possible
Science G (Galactic)	Science S (Solar System)	Juelich Mode	
Science H (Ionosphere)	Test Observation	Station Failure	
Science N (AGN)	Maintenance Mode	Piggyback Control	

0 Sunrise

6

12

Sunset

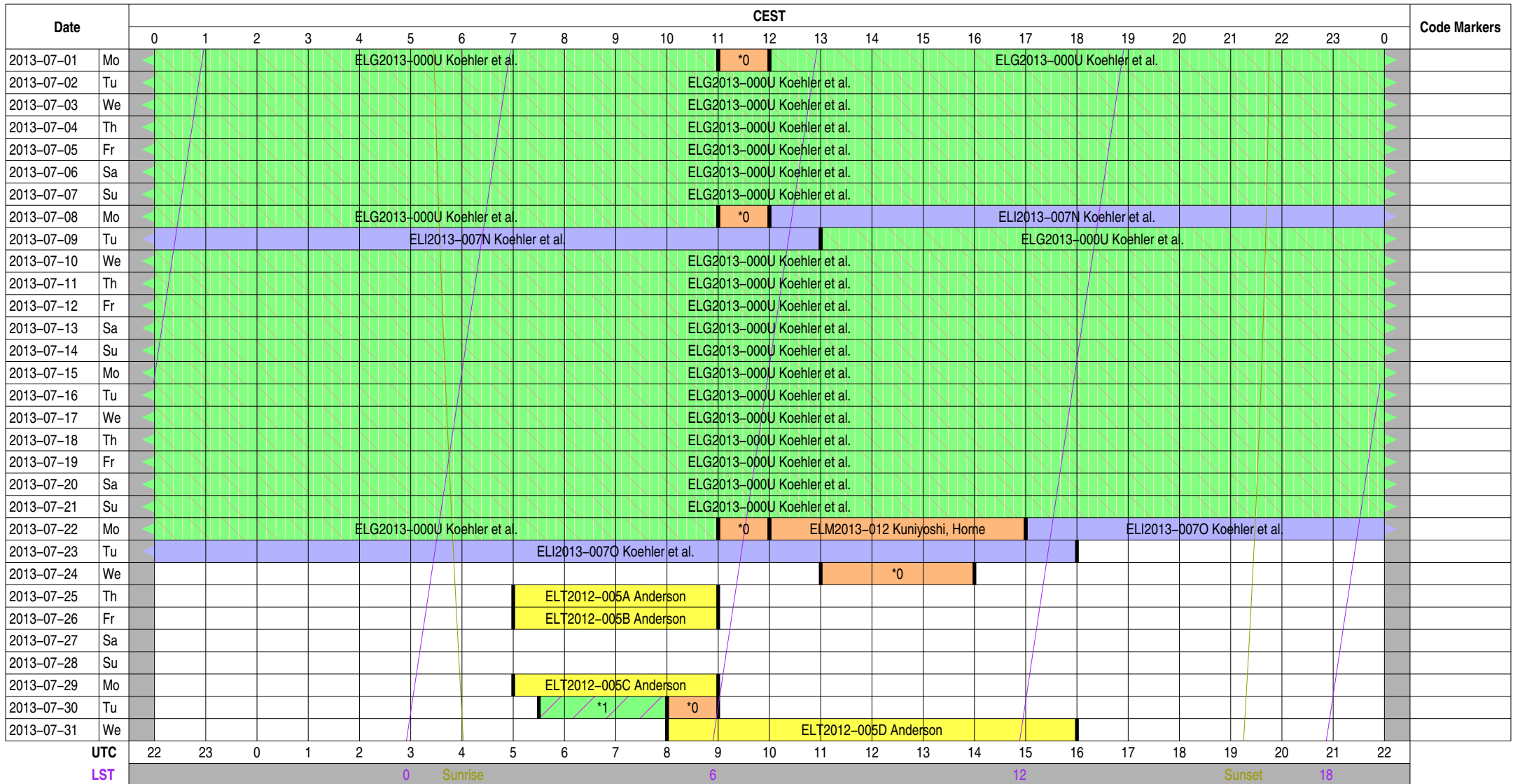
18

UTC

LST

Observing Plan for IofarAN Computers MPIfR Effelsberg LOFAR Station 2013-07-01 through 2013-07-31

For any publication based on observations with the Effelsberg LOFAR station, please use the following acknowledgment: "Based on observations made with the Effelsberg LOFAR station of the Max-Planck-Institut für Radioastronomie (MPIfR) at Effelsberg."



Normal Experiment Code Markers

- 0 ELM2013-012 Kuniyoshi, Horneff
- 1 ELS2013-000A Koehler et al.

Other Code Markers

Color Meanings

- | | | | |
|---------------------------|--------------------------|-------------------|---------------------------|
| Science A (Astrometry) | Science O (Other) | ILT Mode | Piggyback Without Control |
| Science C (Cosmology) | Science P (Pulsar) | Effelsberg Mode | Experiment Warning |
| Science E (Extragalactic) | Science R (Cosmic Rays) | GLOW Mode | Override Possible |
| Science G (Galactic) | Science S (Solar System) | Juelich Mode | |
| Science H (Ionosphere) | Test Observation | Station Failure | |
| Science N (AGN) | Maintenance Mode | Piggyback Control | |

UTC
LST

0 Sunrise

6

12

Sunset

18

Observing Plan for IofarBN Computers MPIfR Effelsberg LOFAR Station 2013-07-01 through 2013-07-31

For any publication based on observations with the Effelsberg LOFAR station, please use the following acknowledgment: "Based on observations made with the Effelsberg LOFAR station of the Max-Planck-Institut für Radioastronomie (MPIfR) at Effelsberg."

Date	CEST																								Code Markers
	0	1	2	3	4	5	6	7	8	9	10	11	12	13	14	15	16	17	18	19	20	21	22	23	
2013-07-01	Mo				ELG2013-000U Koehler et al.							*0					ELP2012-022AD Verbiest							*1	
2013-07-02	Tu				ELP2013-003A Noutsos, Verbiest, Osłowski, Horneffer, Kuniyoshi, Anderson, Koehler, Wucknitz															ELP2012-022AE Verbiest					
2013-07-03	We																								
2013-07-04	Th				ELP2012-022AE Verbiest													ELP2012-022AE Verbiest							
2013-07-05	Fr				ELP2012-022AE Verbiest												ELG2013-000U Koehler et al.								
2013-07-06	Sa												ELG2013-000U Koehler et al.												
2013-07-07	Su												ELG2013-000U Koehler et al.												
2013-07-08	Mo				ELG2013-000U Koehler et al.							*0								ELI2013-007N Koehler et al.					
2013-07-09	Tu				ELI2013-007N Koehler et al.																ELP2012-022AF Verbiest				
2013-07-10	We				ELP2012-022AF Verbiest															ELP2012-022AF Verbiest					
2013-07-11	Th				ELP2012-022AF Verbiest															ELG2013-000U Koehler et al.					
2013-07-12	Fr												ELG2013-000U Koehler et al.												
2013-07-13	Sa												ELG2013-000U Koehler et al.												
2013-07-14	Su												ELG2013-000U Koehler et al.												
2013-07-15	Mo												ELG2013-000U Koehler et al.												
2013-07-16	Tu												ELG2013-000U Koehler et al.												
2013-07-17	We												ELG2013-000U Koehler et al.												
2013-07-18	Th												ELG2013-000U Koehler et al.												
2013-07-19	Fr												ELG2013-000U Koehler et al.												
2013-07-20	Sa												ELG2013-000U Koehler et al.												
2013-07-21	Su												ELG2013-000U Koehler et al.												
2013-07-22	Mo				ELG2013-000U Koehler et al.							*0		ELM2013-012 Kuniyoshi, Horne						ELI2013-007O Koehler et al.					
2013-07-23	Tu																					ELP2012-022AG Verbiest			
2013-07-24	We				ELP2012-022AG Verbiest																				
2013-07-25	Th				ELP2012-022AI Verbiest																				
2013-07-26	Fr		*4		*3																				
2013-07-27	Sa		*4		*3																				
2013-07-28	Su		*4		*3																				
2013-07-29	Mo		*4		*3																				
2013-07-30	Tu				ELP2012-022AJ Verbiest																				
2013-07-31	We				ELP2012-022AK Verbiest																				

UTC	22	23	0	1	2	3	4	5	6	7	8	9	10	11	12	13	14	15	16	17	18	19	20	21	22
LST						0	Sunrise					6							12			Sunset			18

Normal Experiment Code Markers

- 0 ELM2013-012 Kuniyoshi, Horneff
- 1 ELP2013-003A Noutsos, Verbiest,
- 2 ELP2013-004 Kuniyoshi & Takefu
- 3 ELP2013-005A Noutsos, Verbiest,
- 4 ELP2012-022AJ Verbiest
- 5 ELS2013-000A Koehler et al.

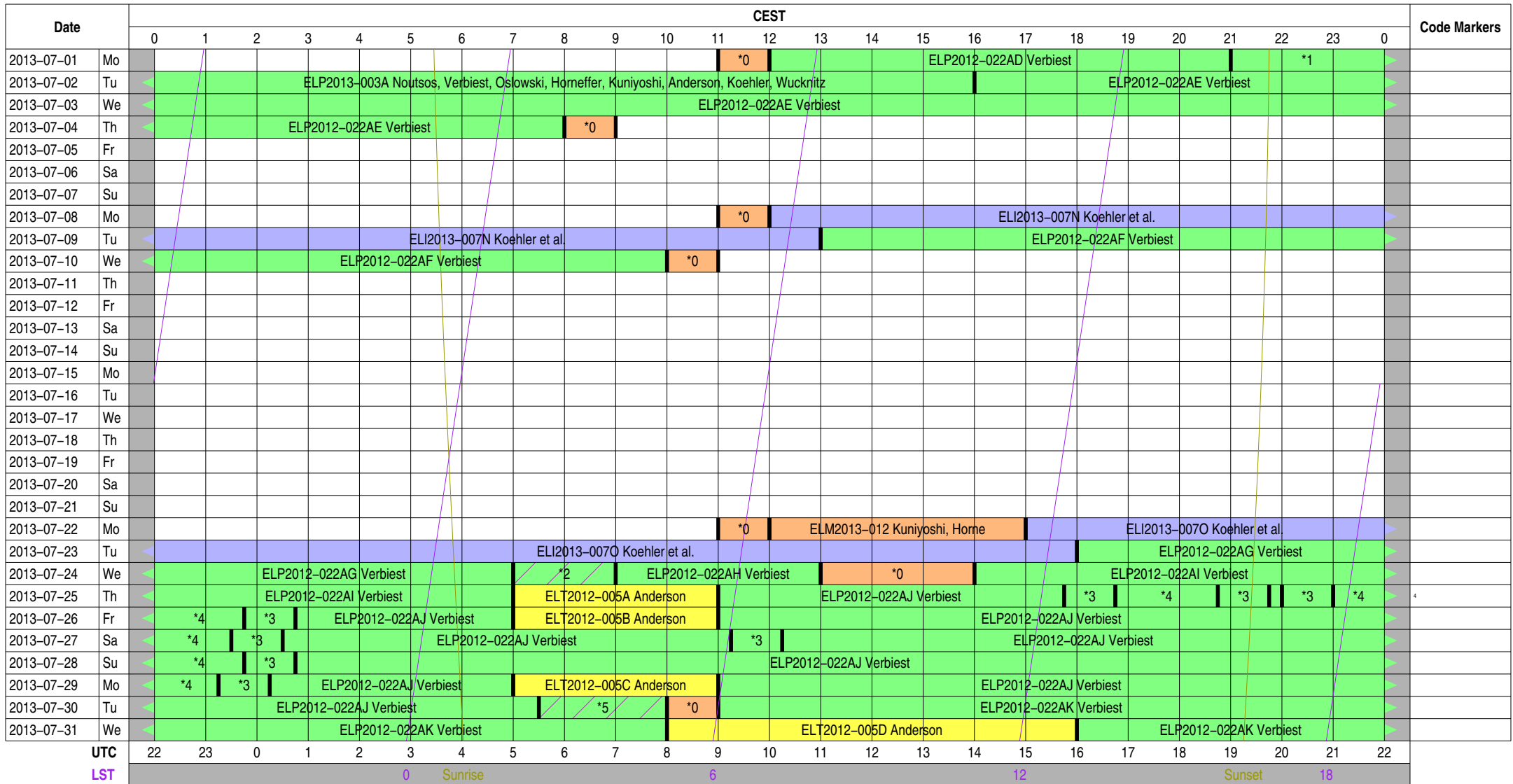
Other Code Markers

Color Meanings

Science A (Astrometry)	Science O (Other)	ILT Mode	Piggyback Without Control
Science C (Cosmology)	Science P (Pulsar)	Effelsberg Mode	Experiment Warning
Science E (Extragalactic)	Science R (Cosmic Rays)	GLOW Mode	Override Possible
Science G (Galactic)	Science S (Solar System)	Juelich Mode	
Science H (Ionosphere)	Test Observation	Station Failure	
Science N (AGN)	Maintenance Mode	Piggyback Control	

Observing Plan for lofarx Computer MPIfR Effelsberg LOFAR Station 2013-07-01 through 2013-07-31

For any publication based on observations with the Effelsberg LOFAR station, please use the following acknowledgment: "Based on observations made with the Effelsberg LOFAR station of the Max-Planck-Institut für Radioastronomie (MPIfR) at Effelsberg."



Normal Experiment Code Markers

- 0 ELM2013-012 Kuniyoshi, Horneff
- 1 ELP2013-003A Noutsos, Verbiest,
- 2 ELP2013-004 Kuniyoshi & Takefu
- 3 ELP2013-005A Noutsos, Verbiest,
- 4 ELP2012-022AJ Verbiest
- 5 ELS2013-000A Koehler et al.

Other Code Markers

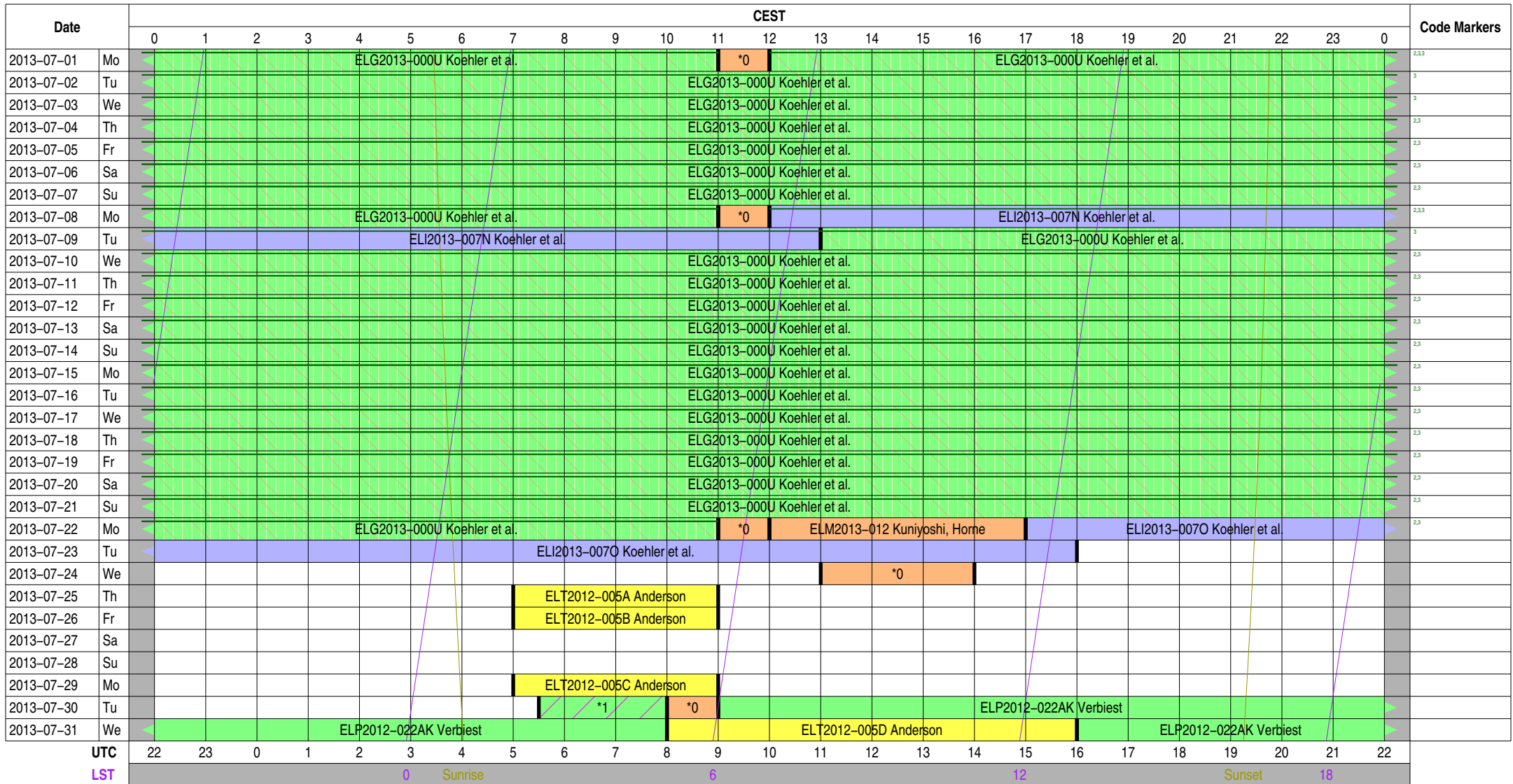
Color Meanings

- | | | |
|---------------------------|--------------------------|-------------------|
| Science A (Astrometry) | Science O (Other) | ILT Mode |
| Science C (Cosmology) | Science P (Pulsar) | Effelsberg Mode |
| Science E (Extragalactic) | Science R (Cosmic Rays) | GLOW Mode |
| Science G (Galactic) | Science S (Solar System) | Juelich Mode |
| Science H (Ionosphere) | Test Observation | Station Failure |
| Science N (AGN) | Maintenance Mode | Piggyback Control |

- Piggyback Without Control
- Experiment Warning
- Override Possible

Observing Plan for Iofarsrv Computer MPIfR Effelsberg LOFAR Station 2013-07-01 through 2013-07-31

For any publication based on observations with the Effelsberg LOFAR station, please use the following acknowledgment: "Based on observations made with the Effelsberg LOFAR station of the Max-Planck-Institut für Radioastronomie (MPIfR) at Effelsberg."



Normal Experiment Code Markers

- 0 ELM2013-012 Kuniyoshi, Horneff
- 1 ELS2013-000A Koehler et al.

Other Code Markers

- 2 ELE2013-000B Horneffer
- 3 ELE2013-000C Horneffer

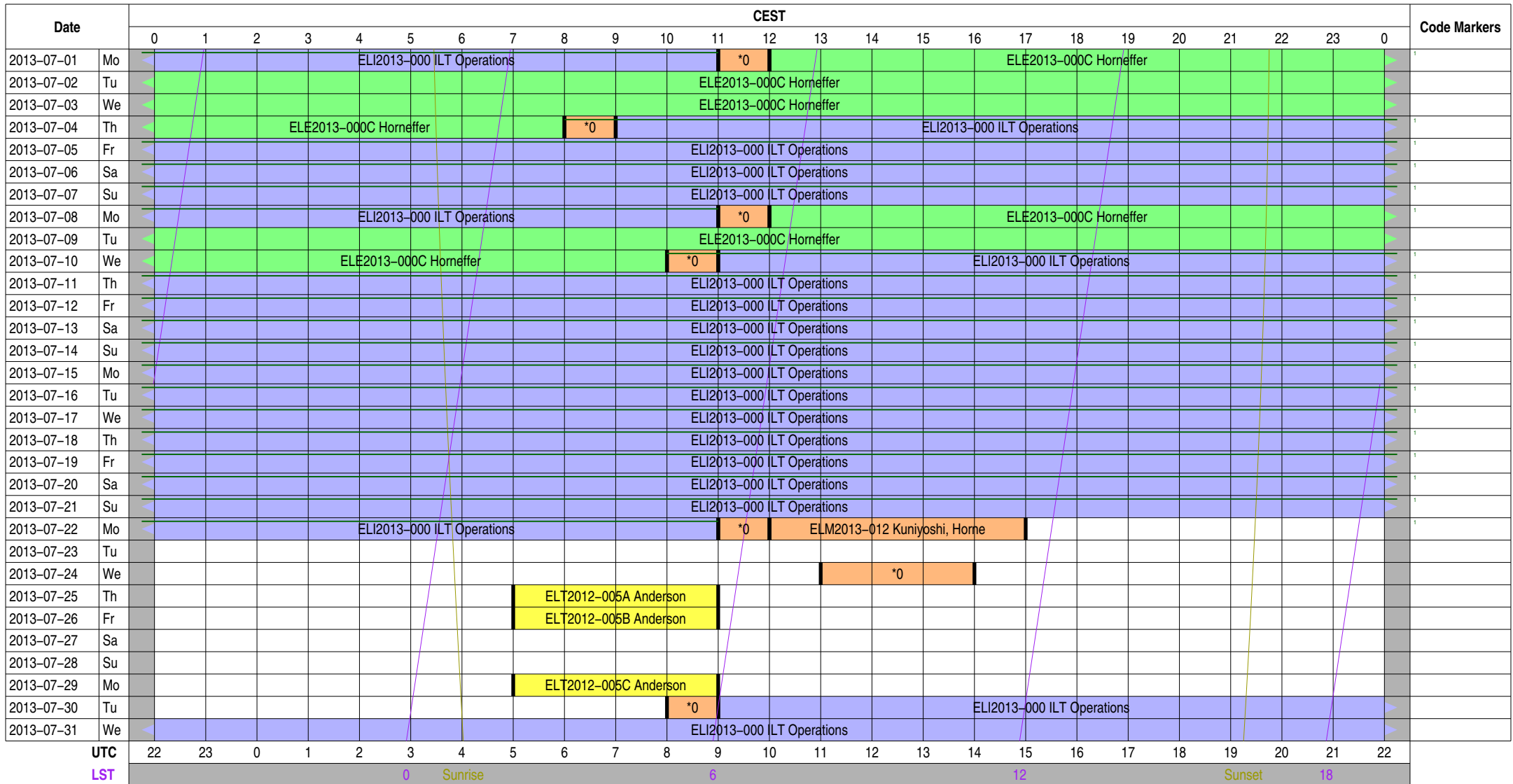
Color Meanings

- | | | | |
|---------------------------|--------------------------|-------------------|---------------------------|
| Science A (Astrometry) | Science O (Other) | ILT Mode | Piggyback Without Control |
| Science C (Cosmology) | Science P (Pulsar) | Effelsberg Mode | Experiment Warning |
| Science E (Extragalactic) | Science R (Cosmic Rays) | GLOW Mode | Override Possible |
| Science G (Galactic) | Science S (Solar System) | Juelich Mode | |
| Science H (Ionosphere) | Test Observation | Station Failure | |
| Science N (AGN) | Maintenance Mode | Piggyback Control | |

Observing Plan for LOFAR Fiber Connection

MPIfR Effelsberg LOFAR Station

2013-07-01 through 2013-07-31



Normal Experiment Code Markers

0 ELM2013-012 Kuniyoshi, Horneff

Other Code Markers

1 ELE2013-000B Horneffer

Color Meanings

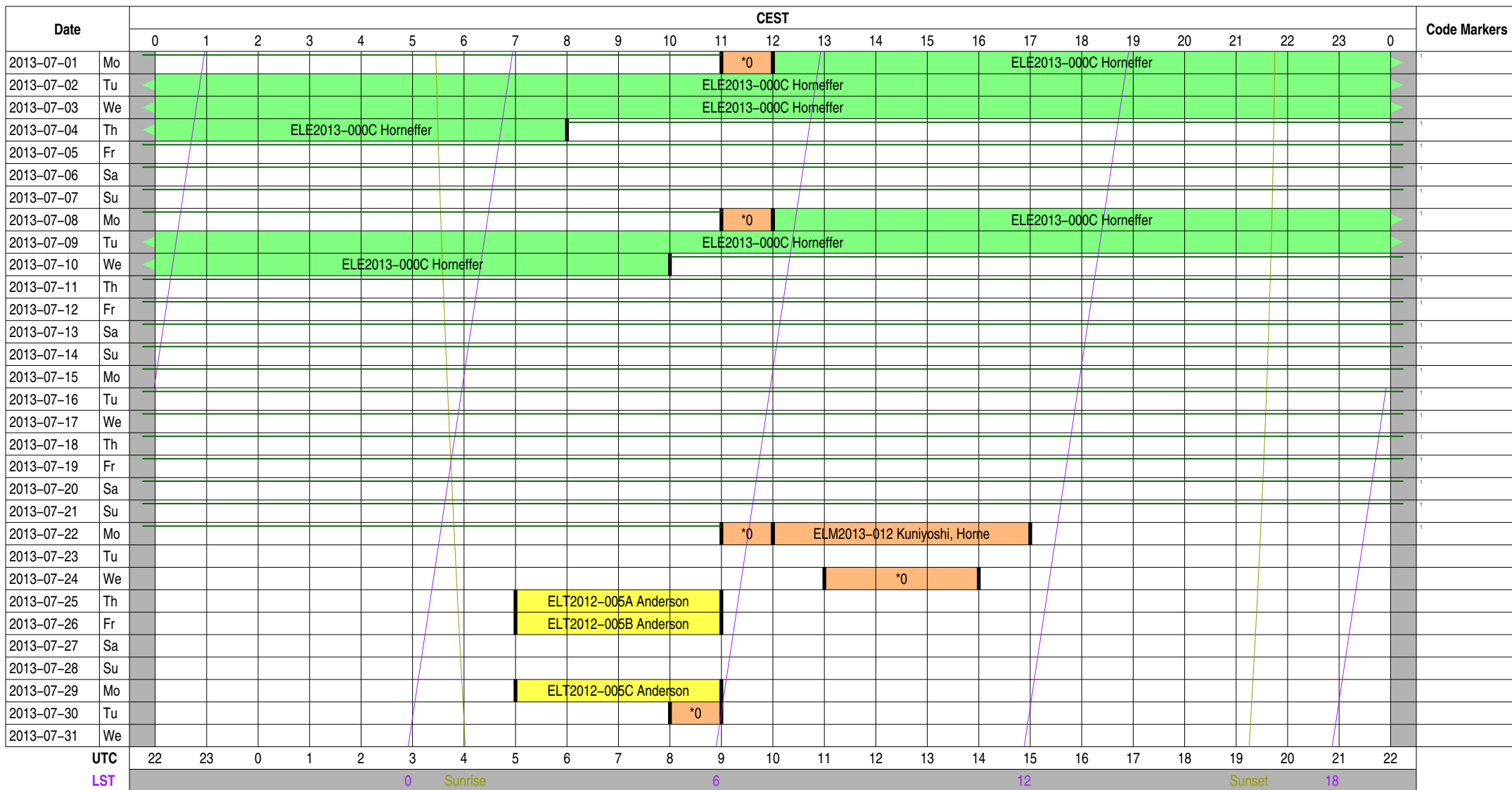
Science A (Astrometry)	Science O (Other)	ILT Mode	Piggyback Without Control
Science C (Cosmology)	Science P (Pulsar)	Effelsberg Mode	Experiment Warning
Science E (Extragalactic)	Science R (Cosmic Rays)	GLOW Mode	Override Possible
Science G (Galactic)	Science S (Solar System)	Juelich Mode	
Science H (Ionosphere)	Test Observation	Station Failure	
Science N (AGN)	Maintenance Mode	Piggyback Control	

Observing Plan for LOFAR Bonn--EF Fiber Connection

MPIfR Effelsberg LOFAR Station

2013-07-01 through 2013-07-31

For any publication based on observations with the Effelsberg LOFAR station, please use the following acknowledgment: "Based on observations made with the Effelsberg LOFAR station of the Max-Planck-Institut für Radioastronomie (MPIfR) at Effelsberg."



Normal Experiment Code Markers

0 ELM2013-012 Kuniyoshi, Horneff

Other Code Markers

1 ELE2013-000B Horneffer

Color Meanings

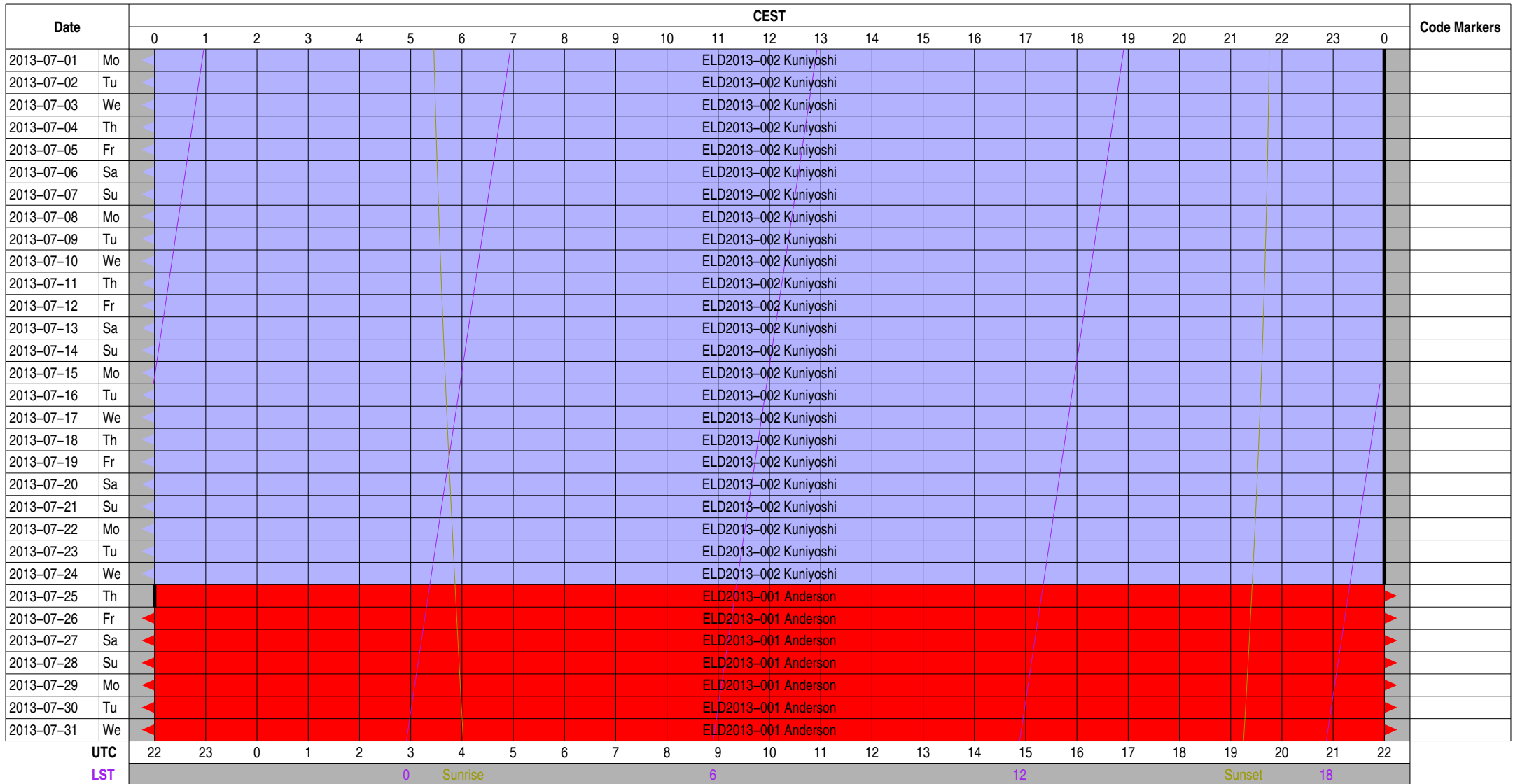
Science A (Astrometry)	Science O (Other)	ILT Mode	Piggyback Without Control
Science C (Cosmology)	Science P (Pulsar)	Effelsberg Mode	Experiment Warning
Science E (Extragalactic)	Science R (Cosmic Rays)	GLOW Mode	Override Possible
Science G (Galactic)	Science S (Solar System)	Juelich Mode	
Science H (Ionosphere)	Test Observation	Station Failure	
Science N (AGN)	Maintenance Mode	Piggyback Control	

Observing Plan for Operator On-Duty

MPIfR Effelsberg LOFAR Station

2013-07-01 through 2013-07-31

For any publication based on observations with the Effelsberg LOFAR station, please use the following acknowledgment: "Based on observations made with the Effelsberg LOFAR station of the Max-Planck-Institut für Radioastronomie (MPIfR) at Effelsberg."



Normal Experiment Code Markers

Other Code Markers

Color Meanings

- 100 m Operator
- Anderson
- Kuniyoshi
- Horneffer
- Other
- Unknown

Experiment Information for Normal Observations

ELE2013-000	Horneffer	horneff@mpiifr-bonn.mpg.de	+49 228 525 505	Data copying for LOFAR MKSP ILT data to Bonn
ELE2013-000 C	Horneffer	horneff@mpiifr-bonn.mpg.de	+49 228 525 505	Data copying for LOFAR MKSP ILT data to Bonn
ELE2013-000 C	Horneffer	horneff@mpiifr-bonn.mpg.de	+49 228 525 505	Data copying for LOFAR MKSP ILT data to Bonn
ELG2013-000	Koehler et al.	jana@mpiifr-bonn.mpg.de	+49 228 525 533	LC0_044 Studying large-scale polarization properties of the
ELG2013-000 U	Koehler et al.	jana@mpiifr-bonn.mpg.de	+49 228 525 533	LC0_044 Studying large-scale polarization properties of the
ELG2013-000 U	Koehler et al.	jana@mpiifr-bonn.mpg.de	+49 228 525 533	LC0_044 Studying large-scale polarization properties of the
ELG2013-000 U	Koehler et al.	jana@mpiifr-bonn.mpg.de	+49 228 525 533	LC0_044 Studying large-scale polarization properties of the
ELG2013-000 U	Koehler et al.	jana@mpiifr-bonn.mpg.de	+49 228 525 533	LC0_044 Studying large-scale polarization properties of the
ELG2013-000 U	Koehler et al.	jana@mpiifr-bonn.mpg.de	+49 228 525 533	LC0_044 Studying large-scale polarization properties of the
ELI2013-000	ILT Operations	observer@astron.nl	+31 521 595 777	Main ILT Observations, ILT Operations only on-duty 9--17, M
ELI2013-000	ILT Operations	observer@astron.nl	+31 521 595 777	Main ILT Observations, ILT Operations only on-duty 9--17, M
ELI2013-000	ILT Operations	observer@astron.nl	+31 521 595 777	Main ILT Observations, ILT Operations only on-duty 9--17, M
ELI2013-000	ILT Operations	observer@astron.nl	+31 521 595 777	Main ILT Observations, ILT Operations only on-duty 9--17, M
ELI2013-000	ILT Operations	observer@astron.nl	+31 521 595 777	Main ILT Observations, ILT Operations only on-duty 9--17, M
ELI2013-007	Koehler et al.	jana@mpiifr-bonn.mpg.de	+49 228 525 533	LC0_044 Studying large-scale polarization properties of the
ELI2013-007 N	Koehler et al.	jana@mpiifr-bonn.mpg.de	+49 228 525 533	LC0_044 Studying large-scale polarization properties of the
ELI2013-007 O	Koehler et al.	jana@mpiifr-bonn.mpg.de	+49 228 525 533	LC0_044 Studying large-scale polarization properties of the
ELM2013-012	Kuniyoshi, Horneffer, Anderson	lofar-ops@mpiifr-bonn.mpg.de	+49 228 525 356	Handover operations for local to ILT mode (MPIFR time)
ELM2013-012	Kuniyoshi, Horneffer, Anderson	lofar-ops@mpiifr-bonn.mpg.de	+49 228 525 356	Handover operations for local to ILT mode (MPIFR time)
ELM2013-012	Kuniyoshi, Horneffer, Anderson	lofar-ops@mpiifr-bonn.mpg.de	+49 228 525 356	Handover operations for local to ILT mode (MPIFR time)
ELM2013-012	Kuniyoshi, Horneffer, Anderson	lofar-ops@mpiifr-bonn.mpg.de	+49 228 525 356	Handover operations for local to ILT mode (MPIFR time)
ELM2013-012	Kuniyoshi, Horneffer, Anderson	lofar-ops@mpiifr-bonn.mpg.de	+49 228 525 356	Handover operations for local to ILT mode (MPIFR time)
ELM2013-012	Kuniyoshi, Horneffer, Anderson	lofar-ops@mpiifr-bonn.mpg.de	+49 228 525 356	Handover operations for local to ILT mode (MPIFR time)
ELM2013-012	Kuniyoshi, Horneffer, Anderson	lofar-ops@mpiifr-bonn.mpg.de	+49 228 525 356	Handover operations for local to ILT mode (MPIFR time)
ELM2013-012	Kuniyoshi, Horneffer, Anderson	lofar-ops@mpiifr-bonn.mpg.de	+49 228 525 356	Handover operations for local to ILT mode (MPIFR time)
ELP2012-022	Verbiest	verbiest@mpiifr-bonn.mpg.de	+49 228 525 246	Assessing the Timing Potential of LOFAR for Pulsars
ELP2012-022 AD	Verbiest	verbiest@mpiifr-bonn.mpg.de	+49 228 525 246	Assessing the Timing Potential of LOFAR for Pulsars
ELP2012-022 AE	Verbiest	verbiest@mpiifr-bonn.mpg.de	+49 228 525 246	Assessing the Timing Potential of LOFAR for Pulsars
ELP2012-022 AE	Verbiest	verbiest@mpiifr-bonn.mpg.de	+49 228 525 246	Assessing the Timing Potential of LOFAR for Pulsars
ELP2012-022 AF	Verbiest	verbiest@mpiifr-bonn.mpg.de	+49 228 525 246	Assessing the Timing Potential of LOFAR for Pulsars
ELP2012-022 AF	Verbiest	verbiest@mpiifr-bonn.mpg.de	+49 228 525 246	Assessing the Timing Potential of LOFAR for Pulsars
ELP2012-022 AG	Verbiest	verbiest@mpiifr-bonn.mpg.de	+49 228 525 246	Assessing the Timing Potential of LOFAR for Pulsars
ELP2012-022 AH	Verbiest	verbiest@mpiifr-bonn.mpg.de	+49 228 525 246	Assessing the Timing Potential of LOFAR for Pulsars
ELP2012-022 AI	Verbiest	verbiest@mpiifr-bonn.mpg.de	+49 228 525 246	Assessing the Timing Potential of LOFAR for Pulsars
ELP2012-022 AJ	Verbiest	verbiest@mpiifr-bonn.mpg.de	+49 228 525 246	Assessing the Timing Potential of LOFAR for Pulsars
ELP2012-022 AJ	Verbiest	verbiest@mpiifr-bonn.mpg.de	+49 228 525 246	Assessing the Timing Potential of LOFAR for Pulsars
ELP2012-022 AJ	Verbiest	verbiest@mpiifr-bonn.mpg.de	+49 228 525 246	Assessing the Timing Potential of LOFAR for Pulsars
ELP2012-022 AJ	Verbiest	verbiest@mpiifr-bonn.mpg.de	+49 228 525 246	Assessing the Timing Potential of LOFAR for Pulsars
ELP2012-022 AJ	Verbiest	verbiest@mpiifr-bonn.mpg.de	+49 228 525 246	Assessing the Timing Potential of LOFAR for Pulsars
ELP2012-022 AJ	Verbiest	verbiest@mpiifr-bonn.mpg.de	+49 228 525 246	Assessing the Timing Potential of LOFAR for Pulsars
ELP2012-022 AJ	Verbiest	verbiest@mpiifr-bonn.mpg.de	+49 228 525 246	Assessing the Timing Potential of LOFAR for Pulsars
ELP2012-022 AJ	Verbiest	verbiest@mpiifr-bonn.mpg.de	+49 228 525 246	Assessing the Timing Potential of LOFAR for Pulsars
ELP2012-022 AJ	Verbiest	verbiest@mpiifr-bonn.mpg.de	+49 228 525 246	Assessing the Timing Potential of LOFAR for Pulsars
ELP2012-022 AJ	Verbiest	verbiest@mpiifr-bonn.mpg.de	+49 228 525 246	Assessing the Timing Potential of LOFAR for Pulsars
ELP2012-022 AJ	Verbiest	verbiest@mpiifr-bonn.mpg.de	+49 228 525 246	Assessing the Timing Potential of LOFAR for Pulsars
ELP2012-022 AK	Verbiest	verbiest@mpiifr-bonn.mpg.de	+49 228 525 246	Assessing the Timing Potential of LOFAR for Pulsars
ELP2012-022 AK	Verbiest	verbiest@mpiifr-bonn.mpg.de	+49 228 525 246	Assessing the Timing Potential of LOFAR for Pulsars
ELP2013-003	Noutsos, Verbiest, Osowski, Horneffer, Kuniyoshi,	anoutsos@mpiifr.de	+49 228 525 324	Element Beam Characterization of DE601: The High Band
ELP2013-003 A	Horneffer	horneff@mpiifr-bonn.mpg.de	+49 228 525 505	Element Beam Characterization of DE601: The High Band
ELP2013-004	Kuniyoshi & Takefuji	mkuniyos@mpiifr-bonn.mpg.de	+49 228 525 505	Simultaneous observations of giant single pulses of Crab PS
ELP2013-004	Kuniyoshi & Takefuji	mkuniyos@mpiifr-bonn.mpg.de	+49 228 525 505	Simultaneous observations of giant single pulses of Crab PS
ELP2013-005	Noutsos, Verbiest, Horneffer, Kuniyoshi, Anderson	anoutsos@mpiifr.de	+49 228 525 324	Targeted Beamformed Observations of Pulsars
ELP2013-005 A	Verbiest	joris.verbiest@gmail.com	+49 521 106 3184	Joris observing for Aris

ELP2013-005 A Verbiest
ELP2013-005 A Verbiest

joris.verbiest@gmail.com
joris.verbiest@gmail.com

+49 521 106 3184
+49 521 106 3184

Joris observing for Aris
Joris observing for Aris

ELP2013-005	A	Verbiest	joris.verbiest@gmail.com	+49 521 106 3184	Joris observing for Aris
ELP2013-005	A	Verbiest	joris.verbiest@gmail.com	+49 521 106 3184	Joris observing for Aris
ELP2013-005	A	Verbiest	joris.verbiest@gmail.com	+49 521 106 3184	Joris observing for Aris
ELP2013-005	A	Verbiest	joris.verbiest@gmail.com	+49 521 106 3184	Joris observing for Aris
ELP2013-005	A	Verbiest	joris.verbiest@gmail.com	+49 521 106 3184	Joris observing for Aris
ELS2013-000		Koehler et al.	jana@mpifr-bonn.mpg.de	+49 228 525 533	Observation of Jupiter Io-C Event
ELS2013-000	A	Koehler et al.	jana@mpifr-bonn.mpg.de	+49 228 525 533	Observation of Jupiter Io-C Event
ELT2012-005		Anderson	anderson@mpifr-bonn.mpg.de	+49 228 525 356	8 bit mode testing with LuMP
ELT2012-005	A	Anderson	anderson@mpifr-bonn.mpg.de	+49 228 525 356	8 bit mode testing with LuMP
ELT2012-005	B	Anderson	anderson@mpifr-bonn.mpg.de	+49 228 525 356	8 bit mode testing with LuMP
ELT2012-005	C	Anderson	anderson@mpifr-bonn.mpg.de	+49 228 525 356	8 bit mode testing with LuMP
ELT2012-005	D	Anderson	anderson@mpifr-bonn.mpg.de	+49 228 525 356	8 bit mode testing with LuMP

Experiment Information for Other Actions

ELE2013-000	Horneffer	horneff@mpifr-bonn.mpg.de	+49 228 525 505	Data copying for LOFAR MKSP ILT data to Bonn
ELE2013-000 B	Horneffer	horneff@mpifr-bonn.mpg.de	+49 228 525 505	Data copying for LOFAR MKSP ILT data to Bonn
ELE2013-000 B	Horneffer	horneff@mpifr-bonn.mpg.de	+49 228 525 505	Data copying for LOFAR MKSP ILT data to Bonn
ELE2013-000 B	Horneffer	horneff@mpifr-bonn.mpg.de	+49 228 525 505	Data copying for LOFAR MKSP ILT data to Bonn
ELE2013-000 C	Horneffer	horneff@mpifr-bonn.mpg.de	+49 228 525 505	Data copying for LOFAR MKSP ILT data to Bonn
ELE2013-000 C	Horneffer	horneff@mpifr-bonn.mpg.de	+49 228 525 505	Data copying for LOFAR MKSP ILT data to Bonn
ELE2013-000 C	Horneffer	horneff@mpifr-bonn.mpg.de	+49 228 525 505	Data copying for LOFAR MKSP ILT data to Bonn

Experiment Information for Operator On-Duty Schedule

ELD2013-001	Anderson	anderson@mpifr-bonn.mpg.de	+49 228 525 356	Project Manager
ELD2013-001	Anderson	anderson@mpifr-bonn.mpg.de	+49 228 525 356	Project Manager
ELD2013-002	Kuniyoshi	mkuniyos@mpifr-bonn.mpg.de	+49 228 525 505	Project Scheduler
ELD2013-002	Kuniyoshi	mkuniyos@mpifr-bonn.mpg.de	+49 228 525 505	Project Scheduler

Time Usage [hours] for Normal Observations

Experiment Code	station	TBB	HBA	LBH	LBL	interfe	lofarAN	lofarBN	lofarx	lofarsr	fiber	BN--EF_	duty
ELE2013-000											114.00	114.00	
ELE2013-000 C											68.00	68.00	
ELE2013-000 C											46.00	46.00	
ELG2013-000							488.00	351.00		488.00			
ELG2013-000 U							11.00	11.00		11.00			
ELG2013-000 U								75.00					
ELG2013-000 U							167.00			167.00			
ELG2013-000 U								265.00					
ELG2013-000 U							310.00			310.00			
ELI2013-000	434.00	434.00	434.00	434.00	434.00	434.00					434.00		
ELI2013-000	11.00	11.00	11.00	11.00	11.00	11.00					11.00		
ELI2013-000	98.00	98.00	98.00	98.00	98.00	98.00					98.00		
ELI2013-000	288.00	288.00	288.00	288.00	288.00	288.00					288.00		
ELI2013-000	37.00	37.00	37.00	37.00	37.00	37.00					37.00		
ELI2013-007	50.00	50.00	50.00	50.00			50.00	50.00	50.00	50.00			
ELI2013-007 N	25.00	25.00	25.00	25.00			25.00	25.00	25.00	25.00			
ELI2013-007 O	25.00	25.00	25.00	25.00			25.00	25.00	25.00	25.00			
ELM2013-012	14.00	14.00	14.00	14.00	14.00	14.00	12.00	12.00	14.00	12.00	14.00	12.00	
ELM2013-012	1.00	1.00	1.00	1.00	1.00	1.00	1.00	1.00	1.00	1.00	1.00	1.00	1.00
ELM2013-012	1.00	1.00	1.00	1.00	1.00	1.00	1.00		1.00		1.00		1.00
ELM2013-012	1.00	1.00	1.00	1.00	1.00	1.00	1.00	1.00	1.00	1.00	1.00	1.00	1.00
ELM2013-012	1.00	1.00	1.00	1.00	1.00	1.00	1.00		1.00		1.00		1.00
ELM2013-012	1.00	1.00	1.00	1.00	1.00	1.00	1.00	1.00	1.00	1.00	1.00	1.00	1.00
ELM2013-012	5.00	5.00	5.00	5.00	5.00	5.00	5.00	5.00	5.00	5.00	5.00	5.00	5.00
ELM2013-012	3.00	3.00	3.00	3.00	3.00	3.00	3.00	3.00	3.00	3.00	3.00	3.00	3.00
ELM2013-012	1.00	1.00	1.00	1.00	1.00	1.00	1.00	1.00	1.00	1.00	1.00	1.00	1.00
ELP2012-022	202.50		202.50					279.50	231.50	29.00			
ELP2012-022 AD	9.00		9.00					9.00	9.00				
ELP2012-022 AE	40.00		40.00					40.00	40.00				
ELP2012-022 AE								24.00					
ELP2012-022 AF	21.00		21.00					21.00	21.00				
ELP2012-022 AF								24.00					
ELP2012-022 AG	13.00		13.00					13.00	13.00				
ELP2012-022 AH	4.00		4.00					4.00	4.00				
ELP2012-022 AI	15.00		15.00					15.00	15.00				
ELP2012-022 AJ	6.75		6.75					6.75	6.75				
ELP2012-022 AJ	2.00		2.00					2.00	2.00				
ELP2012-022 AJ	0.25		0.25					0.25	0.25				
ELP2012-022 AJ	2.75		2.75					2.75	2.75				
ELP2012-022 AJ	4.25		4.25					4.25	4.25				
ELP2012-022 AJ	14.50		14.50					14.50	14.50				
ELP2012-022 AJ	8.75		8.75					8.75	8.75				
ELP2012-022 AJ	13.50		13.50					13.50	13.50				
ELP2012-022 AJ	22.50		22.50					22.50	22.50				
ELP2012-022 AJ	4.75		4.75					4.75	4.75				
ELP2012-022 AJ	20.50		20.50					20.50	20.50				
ELP2012-022 AK								23.00	23.00	23.00			
ELP2012-022 AK								6.00	6.00	6.00			
ELP2013-003	19.00		19.00					19.00	19.00				
ELP2013-003 A	19.00		19.00					19.00	19.00				
ELP2013-004	2.00		2.00					2.00	2.00				
ELP2013-004	2.00		2.00					2.00	2.00				
ELP2013-005	8.00		8.00					8.00	8.00				

Experiment Code	station	TBB	HBA	LBH	LBL	interfe	lofarAN	lofarBN	lofarx	lofarsr	fiber	BN--EF_	duty
ELP2013-005 A	1.00		1.00					1.00	1.00				
ELP2013-005 A	1.00		1.00					1.00	1.00				

Experiment Code	station	TBB	HBA	LBH	LBL	interfe	lofarAN	lofarBN	lofarx	lofarsr	fiber	BN--EF_	duty
ELP2013-005 A	1.00		1.00					1.00	1.00				
ELP2013-005 A	1.00		1.00					1.00	1.00				
ELP2013-005 A	1.00		1.00					1.00	1.00				
ELP2013-005 A	1.00		1.00					1.00	1.00				
ELP2013-005 A	1.00		1.00					1.00	1.00				
ELP2013-005 A	1.00		1.00					1.00	1.00				
ELS2013-000	2.50	2.50		2.50			2.50	2.50	2.50	2.50			
ELS2013-000 A	2.50	2.50		2.50			2.50	2.50	2.50	2.50			
ELT2012-005	12.00	12.00	12.00	12.00	12.00	12.00	20.00	20.00	20.00	20.00	12.00	12.00	
ELT2012-005 A	4.00	4.00	4.00	4.00	4.00	4.00	4.00	4.00	4.00	4.00	4.00	4.00	
ELT2012-005 B	4.00	4.00	4.00	4.00	4.00	4.00	4.00	4.00	4.00	4.00	4.00	4.00	
ELT2012-005 C	4.00	4.00	4.00	4.00	4.00	4.00	4.00	4.00	4.00	4.00	4.00	4.00	
ELT2012-005 D							8.00	8.00	8.00	8.00			

Time Usage [hours] for Other Actions

Experiment Code	station	TBB	HBA	LBH	LBL	interfe	lofarAN	lofarBN	lofarx	lofarsr	fiber	BN--EF_	duty
ELE2013-000										912.00	399.00	399.00	
ELE2013-000 B										11.00	11.00	11.00	
ELE2013-000 B										99.00	99.00	99.00	
ELE2013-000 B										289.00	289.00	289.00	
ELE2013-000 C										11.00			
ELE2013-000 C										167.00			
ELE2013-000 C										335.00			

Summary of Time Usage [total=744.00 hours] for MPIfR Effelsberg LOFAR Station

Experiment Code station TBB HBA LBH LBL interfe lofarAN lofarBN lofarx lofarsr fiber BN--EF_ duty

normal

Science A (Astrometry)													
Science C (Cosmology)													
Science E (Extragalactic)											114.00	114.00	
Science G (Galactic)							488.00	351.00		488.00			
Science H (Ionosphere)													
Science N (AGN)													
Science O (Other)													
Science P (Pulsar)	231.50		231.50					308.50	260.50	29.00			
Science R (Cosmic Rays)													
Science S (Solar System)	2.50	2.50		2.50				2.50	2.50	2.50	2.50		
Test Observation	12.00	12.00	12.00	12.00	12.00	12.00	20.00	20.00	20.00	20.00	12.00	12.00	
Maintenance Mode	14.00	14.00	14.00	14.00	14.00	14.00	12.00	12.00	14.00	12.00	14.00	12.00	
ILT Mode	484.00	484.00	484.00	484.00	434.00	434.00	50.00	50.00	50.00	50.00	434.00		

Effelsberg Mode

GLOW Mode

Juelich Mode

Station Failure

Unknown Code													
Idle	0.00	231.50	2.50	231.50	284.00	284.00	171.50	0.00	397.00	142.50	170.00	606.00	

piggy-up

Piggyback Control

Unknown Code													
Idle	744.00	744.00	744.00	744.00	744.00	744.00	744.00	744.00	744.00	744.00	744.00	744.00	

piggy-down

Piggyback Without Control

Unknown Code													
Idle	744.00	744.00	744.00	744.00	744.00	744.00	744.00	744.00	744.00	-168.00	345.00	345.00	

warning

Experiment Warning

Unknown Code													
Idle	744.00	744.00	744.00	744.00	744.00	744.00	744.00	744.00	744.00	744.00	744.00	744.00	

steal

Override Possible

Unknown Code													
Idle	744.00	744.00	744.00	744.00	744.00	744.00	744.00	744.00	744.00	744.00	744.00	744.00	

duty

100 m Operator

Anderson

Kuniyoshi

Horneffer

Other

Unknown

Unknown Code													
Idle												0.00	

168.00

576.00

Summary of Time Usage [total=100.00 %] for MPIfR Effelsberg LOFAR Station

Experiment Code	station	TBB	HBA	LBH	LBL	interfe	lofarAN	lofarBN	lofarx	lofarsr	fiber	BN--EF_	duty
normal													
Science A (Astrometry)													
Science C (Cosmology)													
Science E (Extragalactic)													
Science G (Galactic)													
Science H (Ionosphere)													
Science N (AGN)													
Science O (Other)													
Science P (Pulsar)													
Science R (Cosmic Rays)													
Science S (Solar System)													
Test Observation													
Maintenance Mode													
ILT Mode													
Effelsberg Mode													
GLOW Mode													
Juelich Mode													
Station Failure													
Unknown Code													
Idle													
piggy-up													
Piggyback Control													
Unknown Code													
Idle													
piggy-down													
Piggyback Without Control													
Unknown Code													
Idle													
warning													
Experiment Warning													
Unknown Code													
Idle													
steal													
Override Possible													
Unknown Code													
Idle													
duty													
100 m Operator													
Anderson													
Kuniyoshi													
Horneffer													
Other													
Unknown													
Unknown Code													
Idle													