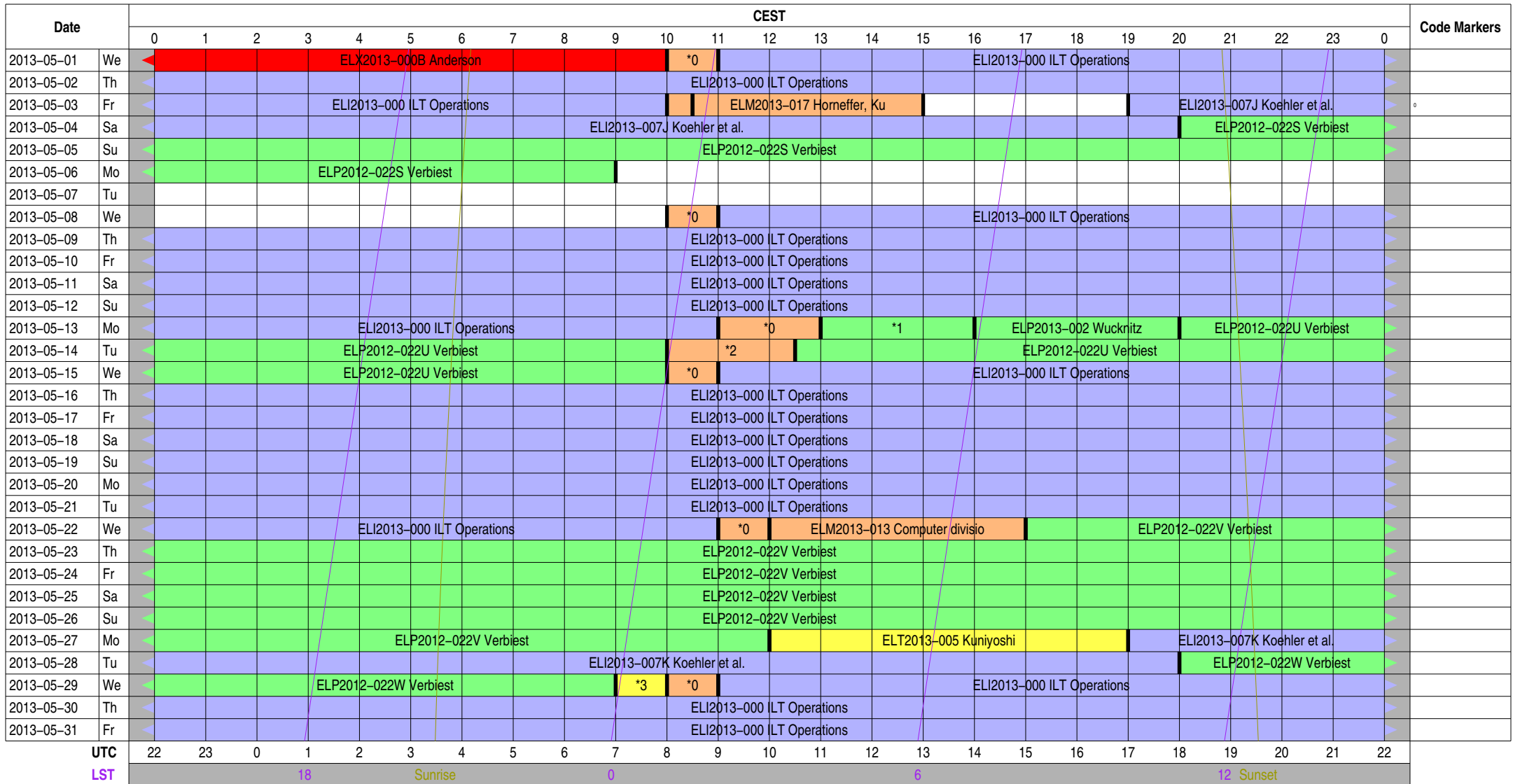


# Observing Plan for Station Control (LCU)

## MPIfR Effelsberg LOFAR Station

### 2013-05-01 through 2013-05-31

For any publication based on observations with the Effelsberg LOFAR station, please use the following acknowledgment: "Based on observations made with the Effelsberg LOFAR station of the Max-Planck-Institut für Radioastronomie (MPIfR) at Effelsberg."



#### Normal Experiment Code Markers

- 0 ELM2013-012 Kuniyoshi, Horneff
- 1 ELP2012-022T Verbiest
- 2 ELM2013-018 Anderson
- 3 ELT2012-005A Anderson

#### Other Code Markers

#### Color Meanings

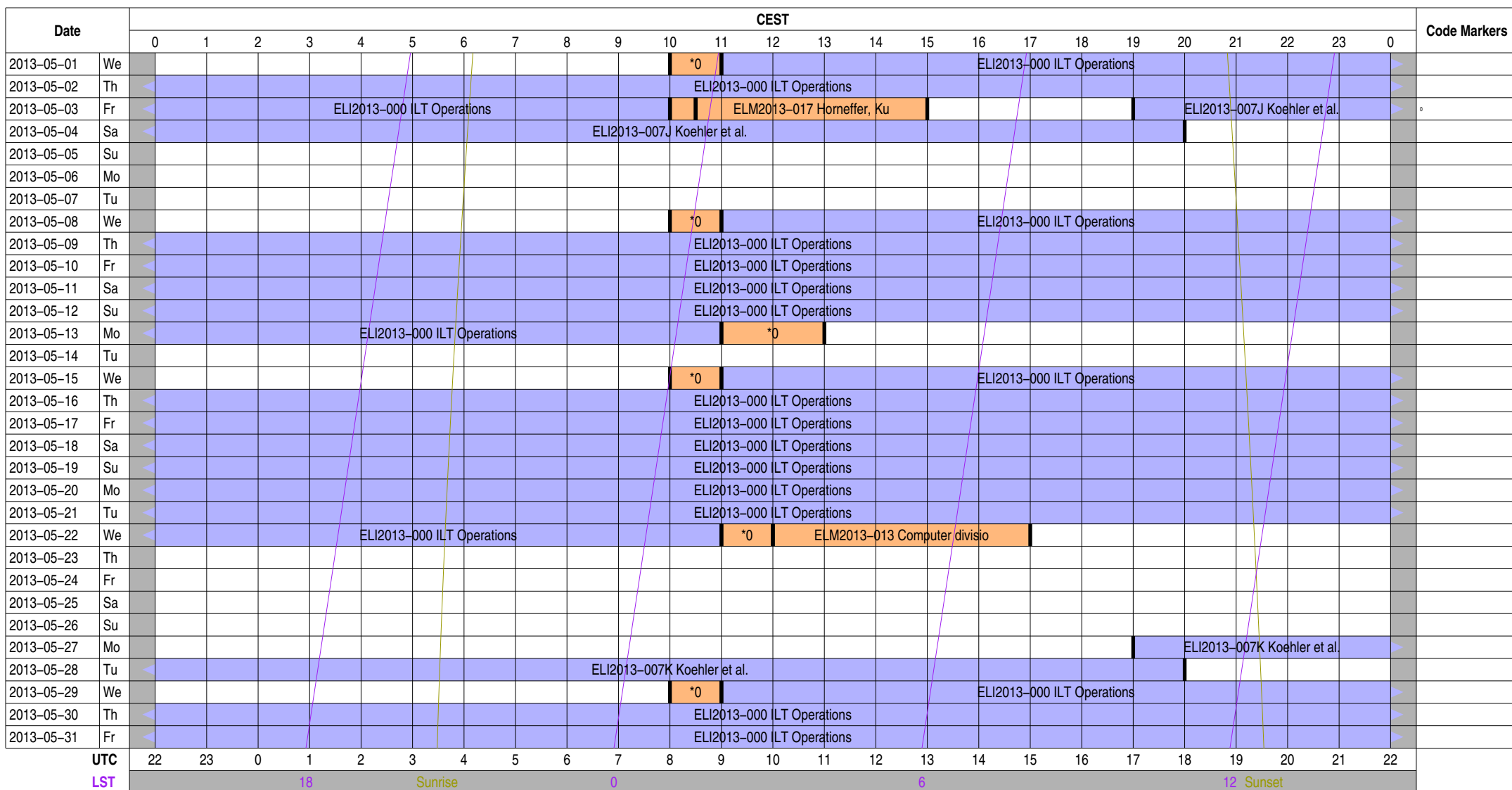
- |                           |                          |                   |                           |
|---------------------------|--------------------------|-------------------|---------------------------|
| Science A (Astrometry)    | Science O (Other)        | ILT Mode          | Piggyback Without Control |
| Science C (Cosmology)     | Science P (Pulsar)       | Effelsberg Mode   | Experiment Warning        |
| Science E (Extragalactic) | Science R (Cosmic Rays)  | GLOW Mode         | Override Possible         |
| Science G (Galactic)      | Science S (Solar System) | Juelich Mode      |                           |
| Science H (Ionosphere)    | Test Observation         | Station Failure   |                           |
| Science N (AGN)           | Maintenance Mode         | Piggyback Control |                           |

# Observing Plan for Transient Buffer Boards

## MPIfR Effelsberg LOFAR Station

### 2013-05-01 through 2013-05-31

For any publication based on observations with the Effelsberg LOFAR station, please use the following acknowledgment: "Based on observations made with the Effelsberg LOFAR station of the Max-Planck-Institut für Radioastronomie (MPIfR) at Effelsberg."



#### Normal Experiment Code Markers

0 ELM2013-012 Kuniyoshi, Horneff

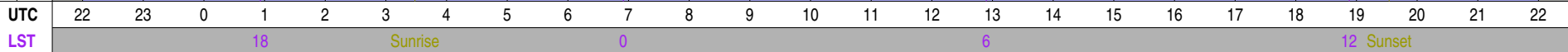
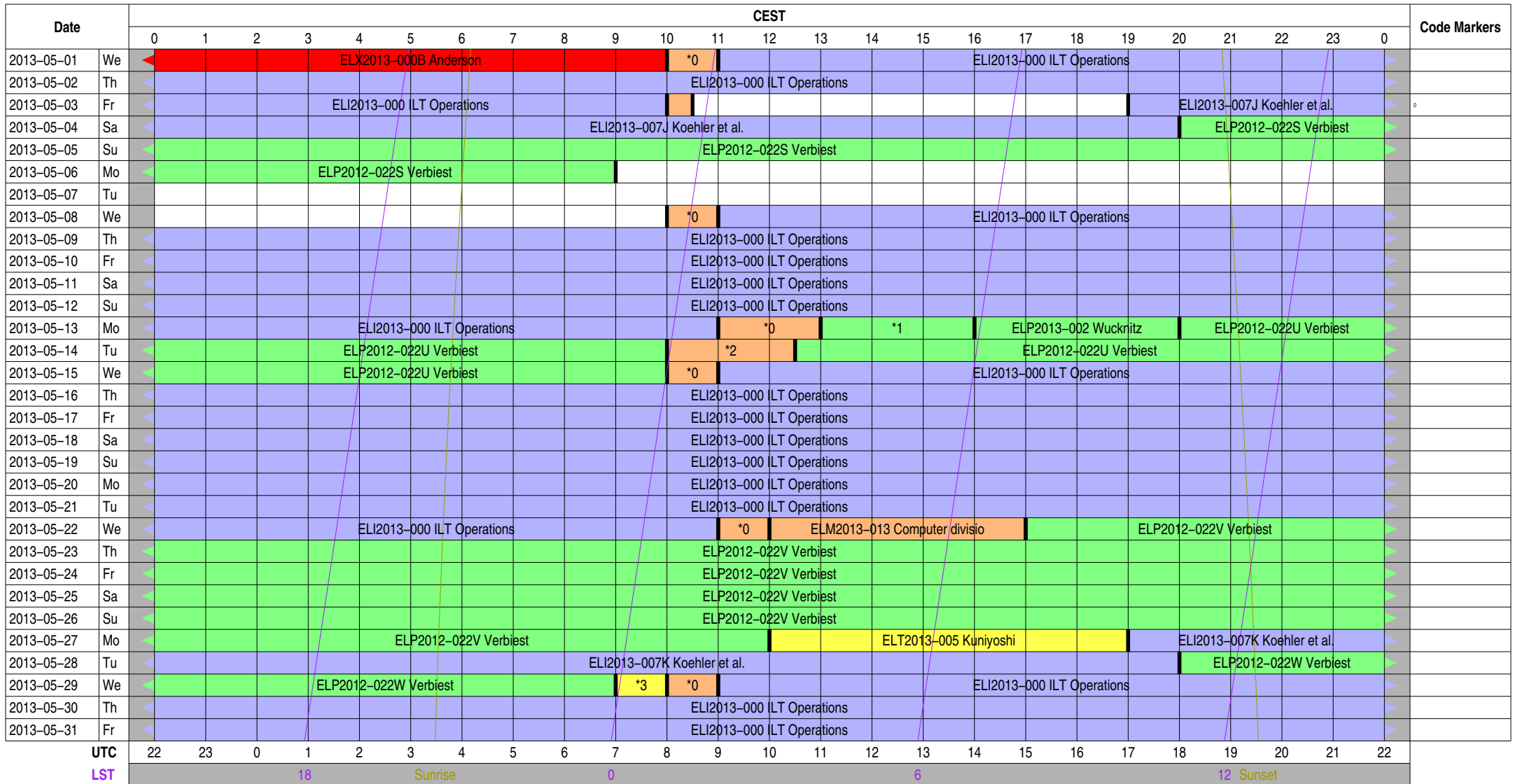
#### Other Code Markers

#### Color Meanings

Science A (Astrometry)	Science O (Other)	ILT Mode	Piggyback Without Control
Science C (Cosmology)	Science P (Pulsar)	Effelsberg Mode	Experiment Warning
Science E (Extragalactic)	Science R (Cosmic Rays)	GLOW Mode	Override Possible
Science G (Galactic)	Science S (Solar System)	Juelich Mode	
Science H (Ionosphere)	Test Observation	Station Failure	
Science N (AGN)	Maintenance Mode	Piggyback Control	

# Observing Plan for HBA MPIfR Effelsberg LOFAR Station 2013-05-01 through 2013-05-31

For any publication based on observations with the Effelsberg LOFAR station, please use the following acknowledgment: "Based on observations made with the Effelsberg LOFAR station of the Max-Planck-Institut für Radioastronomie (MPIfR) at Effelsberg."



### Normal Experiment Code Markers

- 0 ELM2013-012 Kuniyoshi, Horneff
- 1 ELP2012-022T Verbiest
- 2 ELM2013-018 Anderson
- 3 ELT2012-005A Anderson

### Other Code Markers

### Color Meanings

- |                           |                          |                   |                           |
|---------------------------|--------------------------|-------------------|---------------------------|
| Science A (Astrometry)    | Science O (Other)        | ILT Mode          | Piggyback Without Control |
| Science C (Cosmology)     | Science P (Pulsar)       | Effelsberg Mode   | Experiment Warning        |
| Science E (Extragalactic) | Science R (Cosmic Rays)  | GLOW Mode         | Override Possible         |
| Science G (Galactic)      | Science S (Solar System) | Juelich Mode      |                           |
| Science H (Ionosphere)    | Test Observation         | Station Failure   |                           |
| Science N (AGN)           | Maintenance Mode         | Piggyback Control |                           |



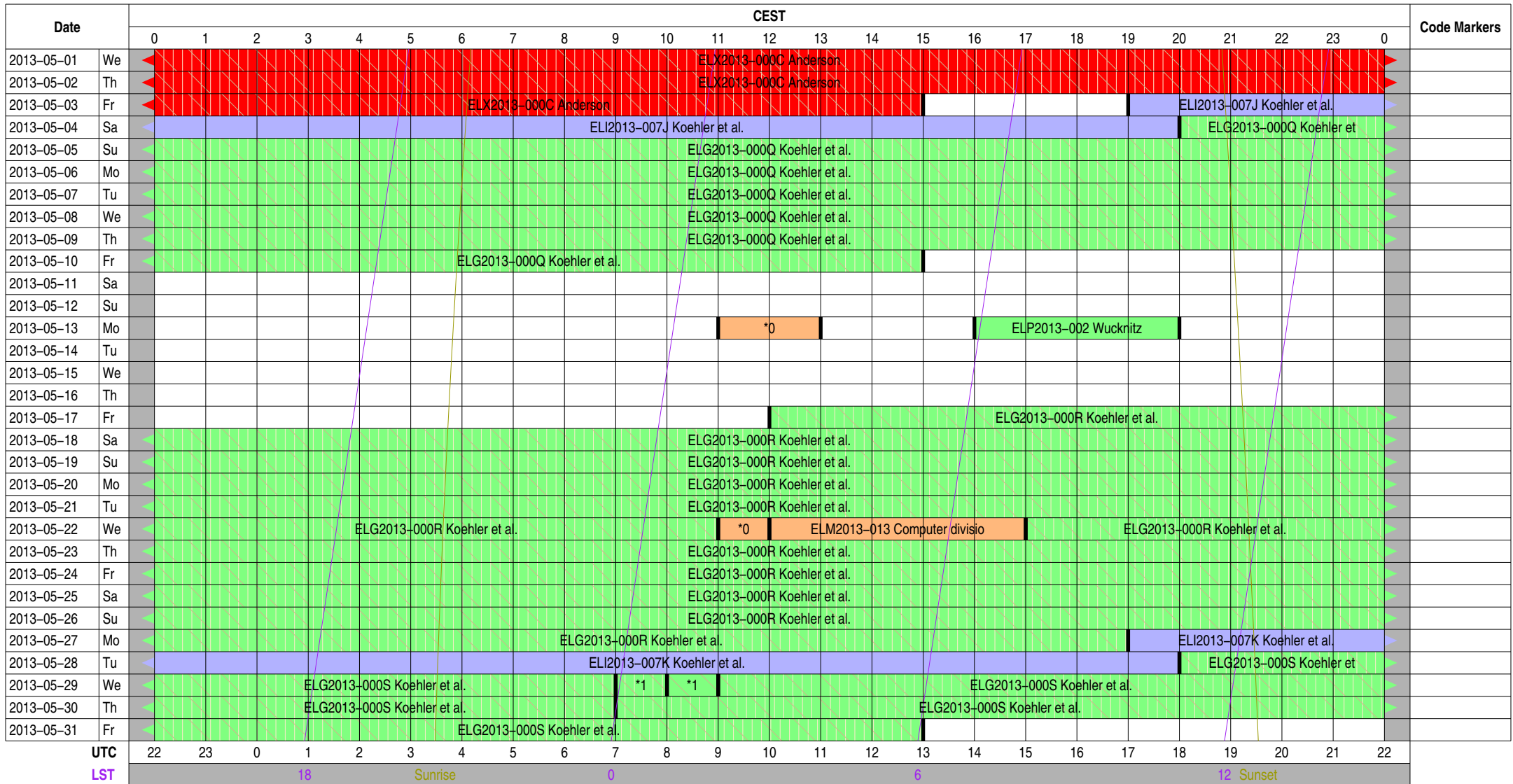






# Observing Plan for IofarAN Computers MPIfR Effelsberg LOFAR Station 2013-05-01 through 2013-05-31

For any publication based on observations with the Effelsberg LOFAR station, please use the following acknowledgment: "Based on observations made with the Effelsberg LOFAR station of the Max-Planck-Institut für Radioastronomie (MPIfR) at Effelsberg."



### Normal Experiment Code Markers

- 0 ELM2013-012 Kuniyoshi, Horneff
- 1 ELG2013-000S Koehler et al.

### Other Code Markers

### Color Meanings

- |                           |                          |                   |                           |
|---------------------------|--------------------------|-------------------|---------------------------|
| Science A (Astrometry)    | Science O (Other)        | ILT Mode          | Piggyback Without Control |
| Science C (Cosmology)     | Science P (Pulsar)       | Effelsberg Mode   | Experiment Warning        |
| Science E (Extragalactic) | Science R (Cosmic Rays)  | GLOW Mode         | Override Possible         |
| Science G (Galactic)      | Science S (Solar System) | Juelich Mode      |                           |
| Science H (Ionosphere)    | Test Observation         | Station Failure   |                           |
| Science N (AGN)           | Maintenance Mode         | Piggyback Control |                           |

UTC

LST

18

Sunrise

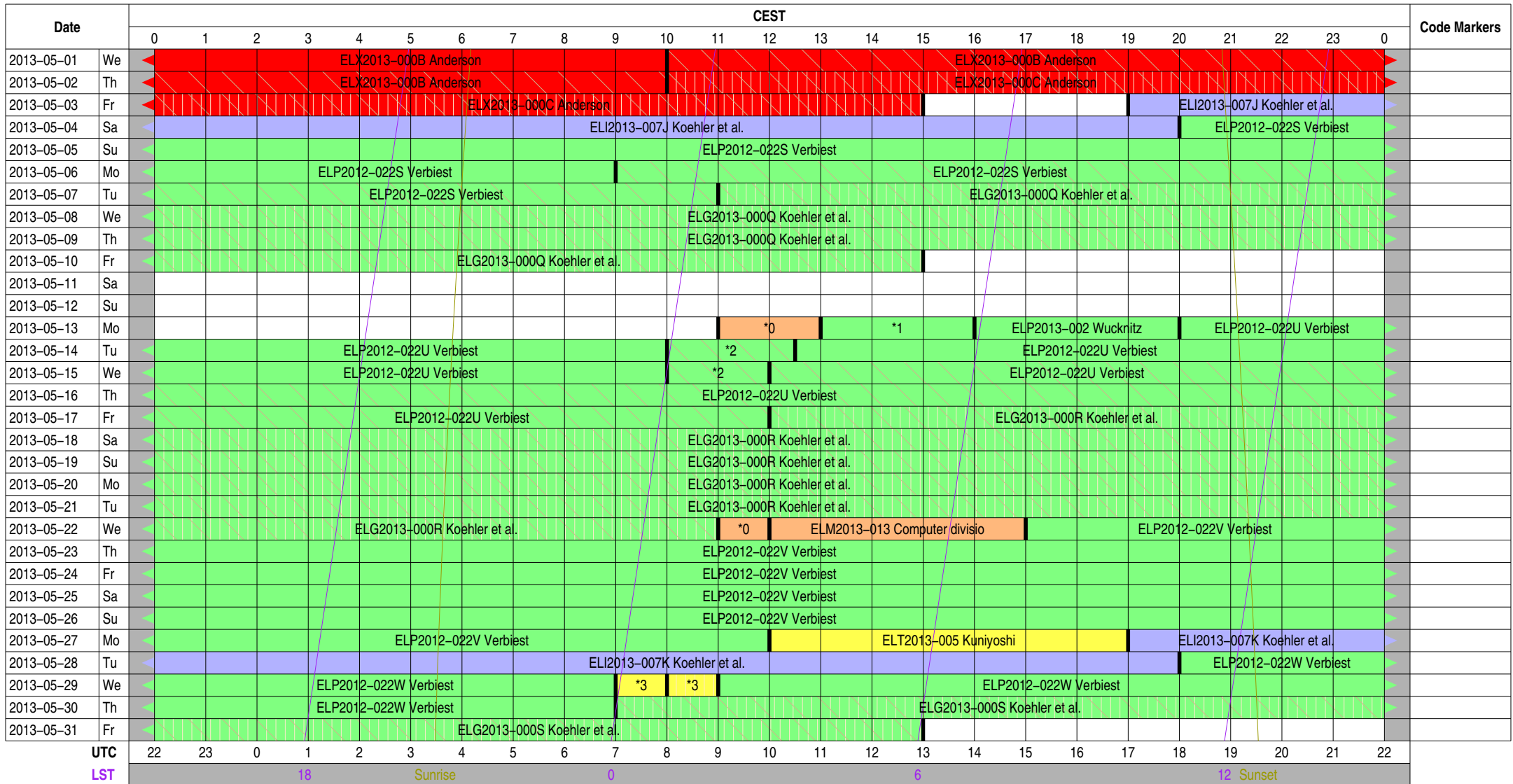
0

6

12 Sunset

# Observing Plan for IofarBN Computers MPIfR Effelsberg LOFAR Station 2013-05-01 through 2013-05-31

For any publication based on observations with the Effelsberg LOFAR station, please use the following acknowledgment: "Based on observations made with the Effelsberg LOFAR station of the Max-Planck-Institut für Radioastronomie (MPIfR) at Effelsberg."



### Normal Experiment Code Markers

- 0 ELM2013-012 Kuniyoshi, Horneff
- 1 ELP2012-022T Verbiest
- 2 ELP2012-022U Verbiest
- 3 ELT2012-005A Anderson

### Other Code Markers

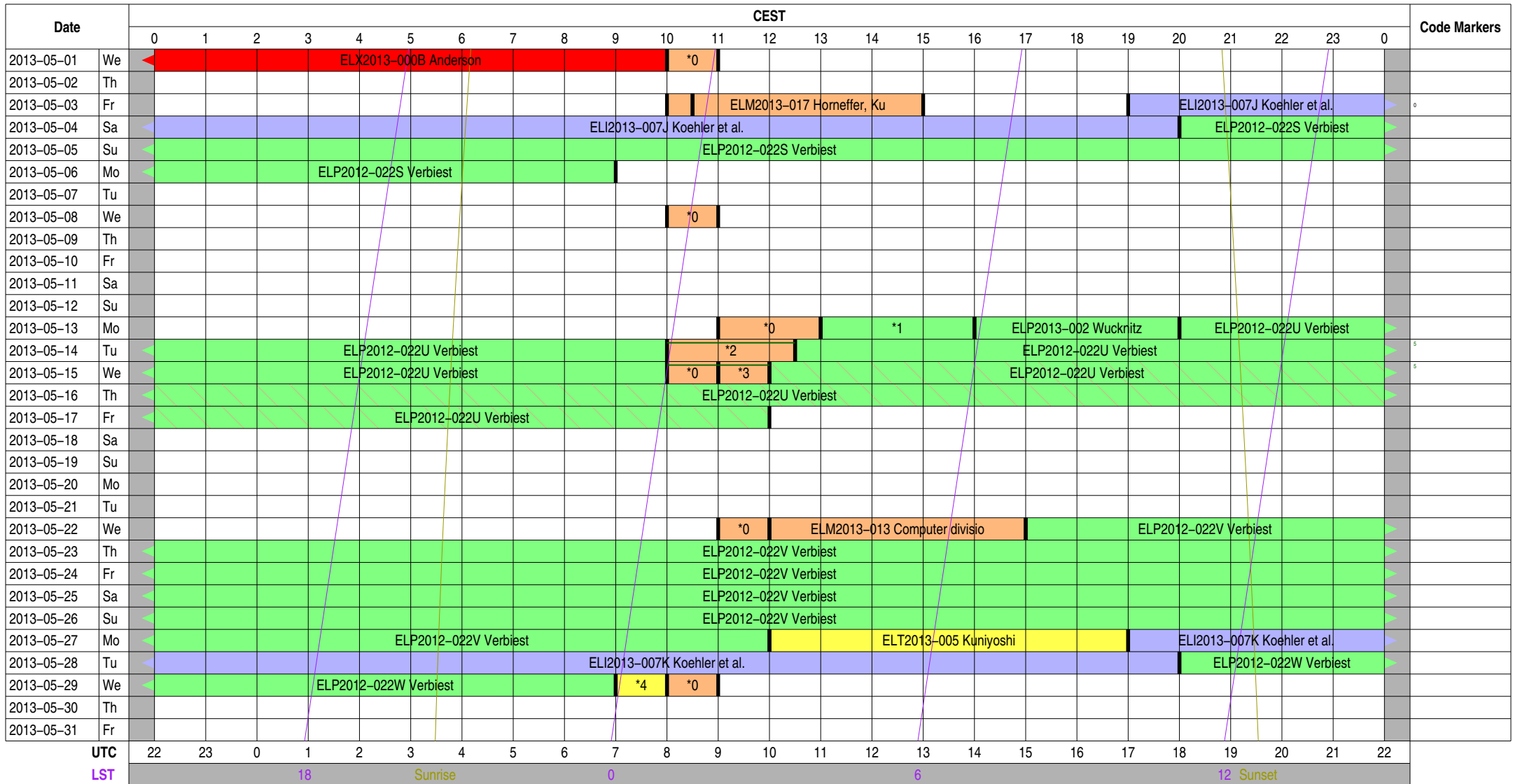
### Color Meanings

- |                           |                          |                   |                           |
|---------------------------|--------------------------|-------------------|---------------------------|
| Science A (Astrometry)    | Science O (Other)        | ILT Mode          | Piggyback Without Control |
| Science C (Cosmology)     | Science P (Pulsar)       | Effelsberg Mode   | Experiment Warning        |
| Science E (Extragalactic) | Science R (Cosmic Rays)  | GLOW Mode         | Override Possible         |
| Science G (Galactic)      | Science S (Solar System) | Juelich Mode      |                           |
| Science H (Ionosphere)    | Test Observation         | Station Failure   |                           |
| Science N (AGN)           | Maintenance Mode         | Piggyback Control |                           |



# Observing Plan for lofar Computer MPIfR Effelsberg LOFAR Station 2013-05-01 through 2013-05-31

For any publication based on observations with the Effelsberg LOFAR station, please use the following acknowledgment: "Based on observations made with the Effelsberg LOFAR station of the Max-Planck-Institut für Radioastronomie (MPIfR) at Effelsberg."



### Normal Experiment Code Markers

- 0 ELM2013-012 Kuniyoshi, Horneff
- 1 ELP2012-022T Verbiest
- 2 ELM2013-018 Anderson
- 3 ELM2013-013 Computer division
- 4 ELT2012-005A Anderson

### Other Code Markers

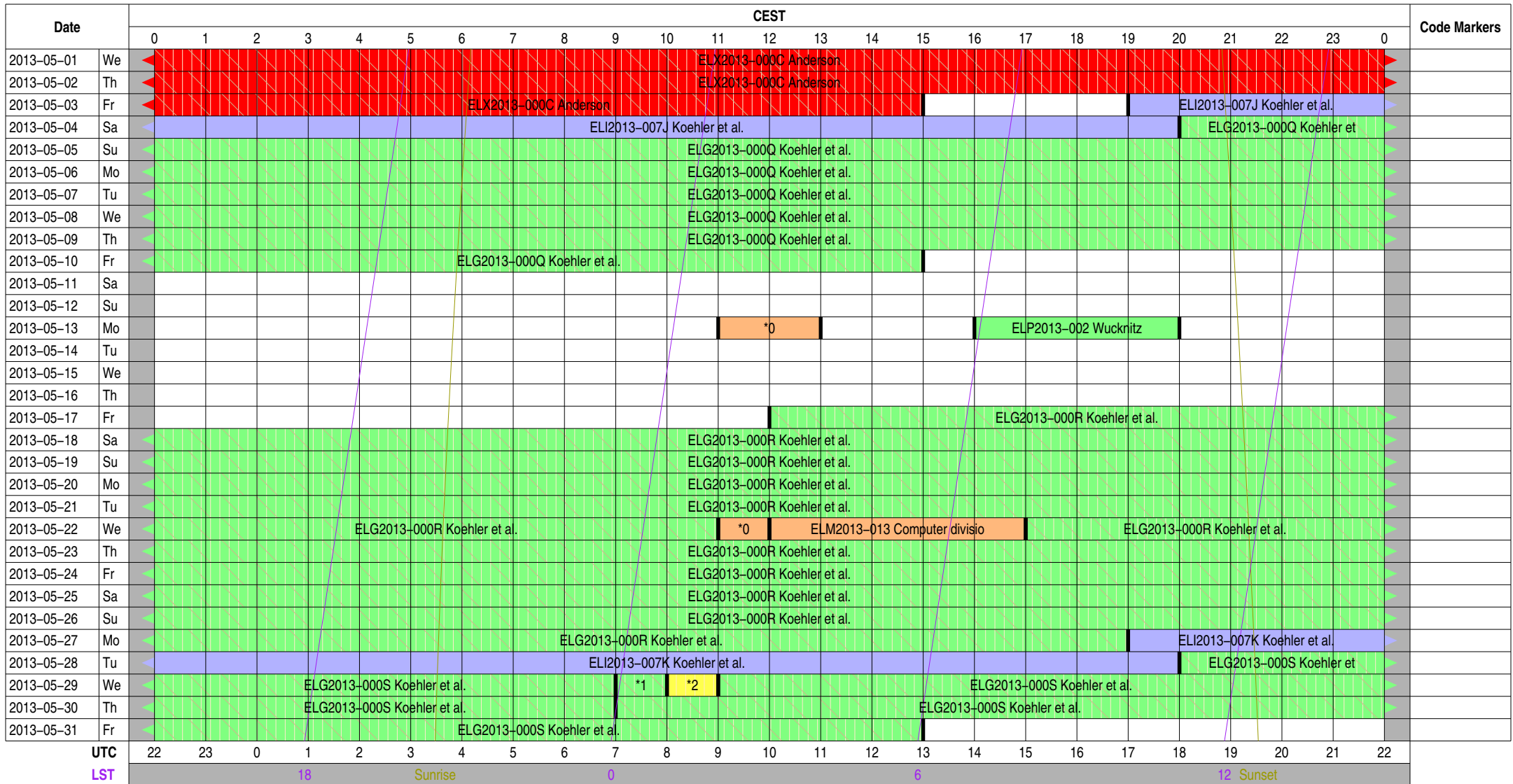
- 5 ELP2012-022U Verbiest

### Color Meanings

- |                           |                          |                   |                           |
|---------------------------|--------------------------|-------------------|---------------------------|
| Science A (Astrometry)    | Science O (Other)        | ILT Mode          | Piggyback Without Control |
| Science C (Cosmology)     | Science P (Pulsar)       | Effelsberg Mode   | Experiment Warning        |
| Science E (Extragalactic) | Science R (Cosmic Rays)  | GLOW Mode         | Override Possible         |
| Science G (Galactic)      | Science S (Solar System) | Juelich Mode      |                           |
| Science H (Ionosphere)    | Test Observation         | Station Failure   |                           |
| Science N (AGN)           | Maintenance Mode         | Piggyback Control |                           |

# Observing Plan for Iofarsrv Computer MPIfR Effelsberg LOFAR Station 2013-05-01 through 2013-05-31

For any publication based on observations with the Effelsberg LOFAR station, please use the following acknowledgment: "Based on observations made with the Effelsberg LOFAR station of the Max-Planck-Institut für Radioastronomie (MPIfR) at Effelsberg."



### Normal Experiment Code Markers

- 0 ELM2013-012 Kuniyoshi, Horneff
- 1 ELG2013-000S Koehler et al.
- 2 ELT2012-005A Anderson

### Other Code Markers

### Color Meanings

- |                           |                          |                   |                           |
|---------------------------|--------------------------|-------------------|---------------------------|
| Science A (Astrometry)    | Science O (Other)        | ILT Mode          | Piggyback Without Control |
| Science C (Cosmology)     | Science P (Pulsar)       | Effelsberg Mode   | Experiment Warning        |
| Science E (Extragalactic) | Science R (Cosmic Rays)  | GLOW Mode         | Override Possible         |
| Science G (Galactic)      | Science S (Solar System) | Juelich Mode      |                           |
| Science H (Ionosphere)    | Test Observation         | Station Failure   |                           |
| Science N (AGN)           | Maintenance Mode         | Piggyback Control |                           |

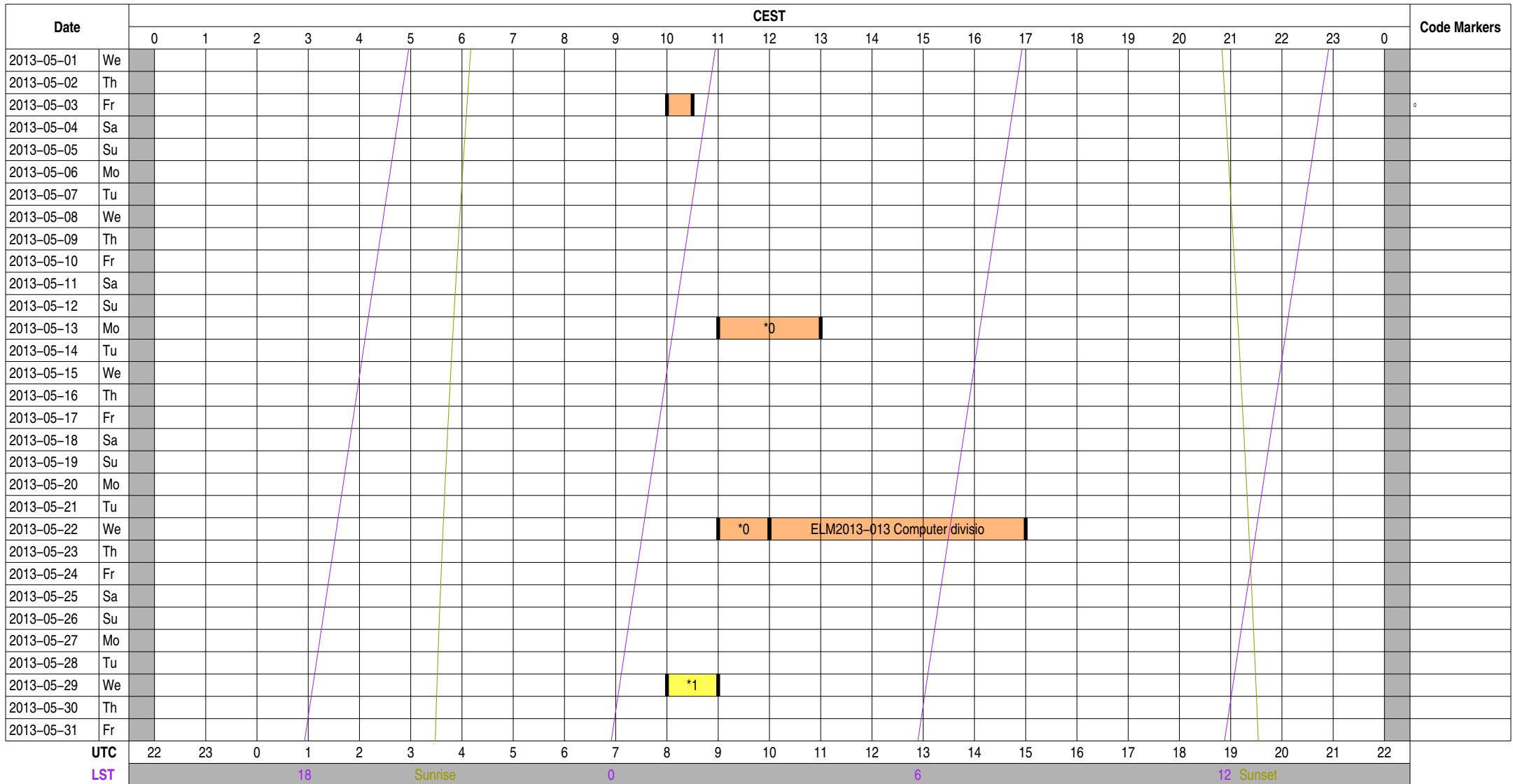


# Observing Plan for LOFAR Bonn--EF Fiber Connection

## MPIfR Effelsberg LOFAR Station

### 2013-05-01 through 2013-05-31

For any publication based on observations with the Effelsberg LOFAR station, please use the following acknowledgment: "Based on observations made with the Effelsberg LOFAR station of the Max-Planck-Institut für Radioastronomie (MPIfR) at Effelsberg."



**Normal Experiment Code Markers**

- 0 ELM2013-012 Kuniyoshi, Horneff
- 1 ELT2012-005A Anderson

**Other Code Markers**

**Color Meanings**

- |                           |                          |                   |                           |
|---------------------------|--------------------------|-------------------|---------------------------|
| Science A (Astrometry)    | Science O (Other)        | ILT Mode          | Piggyback Without Control |
| Science C (Cosmology)     | Science P (Pulsar)       | Effelsberg Mode   | Experiment Warning        |
| Science E (Extragalactic) | Science R (Cosmic Rays)  | GLOW Mode         | Override Possible         |
| Science G (Galactic)      | Science S (Solar System) | Juelich Mode      |                           |
| Science H (Ionosphere)    | Test Observation         | Station Failure   |                           |
| Science N (AGN)           | Maintenance Mode         | Piggyback Control |                           |

# Observing Plan for Operator On-Duty

## MPIfR Effelsberg LOFAR Station

### 2013-05-01 through 2013-05-31

For any publication based on observations with the Effelsberg LOFAR station, please use the following acknowledgment: "Based on observations made with the Effelsberg LOFAR station of the Max-Planck-Institut für Radioastronomie (MPIfR) at Effelsberg."

Date	CEST																								Code Markers		
	0	1	2	3	4	5	6	7	8	9	10	11	12	13	14	15	16	17	18	19	20	21	22	23		0	
2013-05-01	We																										
2013-05-02	Th																										
2013-05-03	Fr																										
2013-05-04	Sa																										
2013-05-05	Su																										
2013-05-06	Mo																										
2013-05-07	Tu																										
2013-05-08	We																										
2013-05-09	Th																										
2013-05-10	Fr																										
2013-05-11	Sa																										
2013-05-12	Su																										
2013-05-13	Mo																										
2013-05-14	Tu																										
2013-05-15	We																										
2013-05-16	Th																										
2013-05-17	Fr																										
2013-05-18	Sa																										
2013-05-19	Su																										
2013-05-20	Mo																										
2013-05-21	Tu																										
2013-05-22	We																										
2013-05-23	Th																										
2013-05-24	Fr																										
2013-05-25	Sa																										
2013-05-26	Su																										
2013-05-27	Mo																										
2013-05-28	Tu																										
2013-05-29	We																										
2013-05-30	Th																										
2013-05-31	Fr																										

UTC 22 23 0 1 2 3 4 5 6 7 8 9 10 11 12 13 14 15 16 17 18 19 20 21 22  
 LST 18 Sunrise 0 6 12 Sunset

Normal Experiment Code Markers

Other Code Markers

Color Meanings

- 100 m Operator
- Anderson
- Kuniyoshi
- Horneffer
- Other
- Unknown

## Experiment Information for Normal Observations

<b>ELG2013-000</b>	<b>Koehler et al.</b>	<b>jana@mpifr-bonn.mpg.de</b>	<b>+49 228 525 533</b>	<b>LC0_044 Studying large-scale polarization properties of the</b>
ELG2013-000 Q	Koehler et al.	jana@mpifr-bonn.mpg.de	+49 228 525 533	LC0_044 Studying large-scale polarization properties of the
ELG2013-000 Q	Koehler et al.	jana@mpifr-bonn.mpg.de	+49 228 525 533	LC0_044 Studying large-scale polarization properties of the
ELG2013-000 R	Koehler et al.	jana@mpifr-bonn.mpg.de	+49 228 525 533	LC0_044 Studying large-scale polarization properties of the
ELG2013-000 R	Koehler et al.	jana@mpifr-bonn.mpg.de	+49 228 525 533	LC0_044 Studying large-scale polarization properties of the
ELG2013-000 S	Koehler et al.	jana@mpifr-bonn.mpg.de	+49 228 525 533	LC0_044 Studying large-scale polarization properties of the
ELG2013-000 S	Koehler et al.	jana@mpifr-bonn.mpg.de	+49 228 525 533	LC0_044 Studying large-scale polarization properties of the
ELG2013-000 S	Koehler et al.	jana@mpifr-bonn.mpg.de	+49 228 525 533	LC0_044 Studying large-scale polarization properties of the
ELG2013-000 S	Koehler et al.	jana@mpifr-bonn.mpg.de	+49 228 525 533	LC0_044 Studying large-scale polarization properties of the
<b>ELI2013-000</b>	<b>ILT Operations</b>	<b>observer@astron.nl</b>	<b>+31 521 595 777</b>	<b>Main ILT Observations, ILT Operations only on-duty 9--17, M</b>
ELI2013-000	ILT Operations	observer@astron.nl	+31 521 595 777	Main ILT Observations, ILT Operations only on-duty 9--17, M
ELI2013-000	ILT Operations	observer@astron.nl	+31 521 595 777	Main ILT Observations, ILT Operations only on-duty 9--17, M
ELI2013-000	ILT Operations	observer@astron.nl	+31 521 595 777	Main ILT Observations, ILT Operations only on-duty 9--17, M
<b>ELI2013-007</b>	<b>Koehler et al.</b>	<b>jana@mpifr-bonn.mpg.de</b>	<b>+49 228 525 533</b>	<b>LC0_044 Studying large-scale polarization properties of the</b>
ELI2013-007 J	Koehler et al.	jana@mpifr-bonn.mpg.de	+49 228 525 533	LC0_044 Studying large-scale polarization properties of the
ELI2013-007 K	Koehler et al.	jana@mpifr-bonn.mpg.de	+49 228 525 533	LC0_044 Studying large-scale polarization properties of the
<b>ELM2013-012</b>	<b>Kuniyoshi, Horneffer, Anderson</b>	<b>lofar-ops@mpifr-bonn.mpg.de</b>	<b>+49 228 525 356</b>	<b>Handover operations for local to ILT mode (MPIFR time)</b>
ELM2013-012	Kuniyoshi, Horneffer, Anderson	lofar-ops@mpifr-bonn.mpg.de	+49 228 525 356	Handover operations for local to ILT mode (MPIFR time)
ELM2013-012	Kuniyoshi, Horneffer, Anderson	lofar-ops@mpifr-bonn.mpg.de	+49 228 525 356	Handover operations for local to ILT mode (MPIFR time)
ELM2013-012	Kuniyoshi, Horneffer, Anderson	lofar-ops@mpifr-bonn.mpg.de	+49 228 525 356	Handover operations for local to ILT mode (MPIFR time)
ELM2013-012	Kuniyoshi, Horneffer, Anderson	lofar-ops@mpifr-bonn.mpg.de	+49 228 525 356	Handover operations for local to ILT mode (MPIFR time)
ELM2013-012	Kuniyoshi, Horneffer, Anderson	lofar-ops@mpifr-bonn.mpg.de	+49 228 525 356	Handover operations for local to ILT mode (MPIFR time)
ELM2013-012	Kuniyoshi, Horneffer, Anderson	lofar-ops@mpifr-bonn.mpg.de	+49 228 525 356	Handover operations for local to ILT mode (MPIFR time)
<b>ELM2013-013</b>	<b>Computer division</b>	<b>rz-support@mpifr-bonn.mpg.de</b>	<b>+49 228 525 359</b>	<b>system administration</b>
ELM2013-013	Computer division	rz-support@mpifr-bonn.mpg.de	+49 228 525 359	system administration
ELM2013-013	Computer division	rz-support@mpifr-bonn.mpg.de	+49 228 525 359	system administration
<b>ELM2013-017</b>	<b>Horneffer, Kuniyoshi</b>	<b>lofar-ops@mpifr-bonn.mpg.de</b>	<b>+49 228 525 505</b>	<b>Install new TBB memory modules (2013 May 03)</b>
ELM2013-017	Horneffer, Kuniyoshi	lofar-ops@mpifr-bonn.mpg.de	+49 228 525 505	Install new TBB memory modules (2013 May 03)
<b>ELM2013-018</b>	<b>Anderson</b>	<b>anderson@mpifr-bonn.mpg.de</b>	<b>+49 228 525 356</b>	<b>test out and configure new 1_13_1 station software version</b>
ELM2013-018	Anderson	anderson@mpifr-bonn.mpg.de	+49 228 525 356	test out and configure new 1_13_1 station software version
<b>ELP2012-022</b>	<b>Verbiest</b>	<b>verbiest@mpifr-bonn.mpg.de</b>	<b>+49 228 525 246</b>	<b>Assessing the Timing Potential of LOFAR for Pulsars</b>
ELP2012-022 S	Verbiest	verbiest@mpifr-bonn.mpg.de	+49 228 525 246	Assessing the Timing Potential of LOFAR for Pulsars
ELP2012-022 S	Verbiest	verbiest@mpifr-bonn.mpg.de	+49 228 525 246	Assessing the Timing Potential of LOFAR for Pulsars
ELP2012-022 T	Verbiest	verbiest@mpifr-bonn.mpg.de	+49 228 525 246	Assessing the Timing Potential of LOFAR for Pulsars
ELP2012-022 U	Osowski	sosowski@mpifr-bonn.mpg.de	+49 228 525 324	Stefan Osowski collaborating with Joris
ELP2012-022 U	Osowski	sosowski@mpifr-bonn.mpg.de	+49 228 525 324	Stefan Osowski collaborating with Joris
ELP2012-022 U	Osowski	sosowski@mpifr-bonn.mpg.de	+49 228 525 324	Stefan Osowski collaborating with Joris
ELP2012-022 U	Osowski	sosowski@mpifr-bonn.mpg.de	+49 228 525 324	Stefan Osowski collaborating with Joris
ELP2012-022 U	Osowski	sosowski@mpifr-bonn.mpg.de	+49 228 525 324	Stefan Osowski collaborating with Joris
ELP2012-022 V	Verbiest	verbiest@mpifr-bonn.mpg.de	+49 228 525 246	Assessing the Timing Potential of LOFAR for Pulsars
ELP2012-022 W	Verbiest	verbiest@mpifr-bonn.mpg.de	+49 228 525 246	Assessing the Timing Potential of LOFAR for Pulsars
ELP2012-022 W	Verbiest	verbiest@mpifr-bonn.mpg.de	+49 228 525 246	Assessing the Timing Potential of LOFAR for Pulsars
<b>ELP2013-002</b>	<b>Wucknitz</b>	<b>wucknitz@mpifr-bonn.mpg.de</b>	<b>+49 228 525 481</b>	<b>long baseline obs with Onsala, Finland, and LWA</b>
ELP2013-002	Wucknitz	wucknitz@mpifr-bonn.mpg.de	+49 228 525 481	long baseline obs with Onsala, Finland, and LWA
<b>ELT2012-005</b>	<b>Anderson</b>	<b>anderson@mpifr-bonn.mpg.de</b>	<b>+49 228 525 356</b>	<b>8 bit mode testing with LuMP</b>
ELT2012-005 A	Anderson	anderson@mpifr-bonn.mpg.de	+49 228 525 356	8 bit mode testing with LuMP
ELT2012-005 A	Anderson	anderson@mpifr-bonn.mpg.de	+49 228 525 356	8 bit mode testing with LuMP
<b>ELT2013-005</b>	<b>Kuniyoshi</b>	<b>mkuniyos@mpifr-bonn.mpg.de</b>	<b>+49 228 525 505</b>	<b>testing DJlump vs LuMP values, May 27</b>
ELT2013-005	Kuniyoshi	mkuniyos@mpifr-bonn.mpg.de	+49 228 525 505	testing DJlump vs LuMP values, May 27
<b>ELX2013-000</b>	<b>Anderson</b>	<b>anderson@mpifr-bonn.mpg.de</b>	<b>+49 228 525 356</b>	<b>RSP boards not properly configured to send data after new s</b>
ELX2013-000 B	Verbiest	verbiest@mpifr-bonn.mpg.de	+49 228 525 246	station beams not working properly after new station firmwa



ELX2013-000 B Verbiest  
ELX2013-000 C Koehler

verbiest@mpifr-bonn.mpg.de  
jana@mpifr-bonn.mpg.de

+49 228 525 246  
+49 228 525 533

station beams not working properly after new station firmwa  
station beams not working properly after new station firmwa



## Experiment Information for Other Actions

ELP2012-022	Verbiest	verbiest@mpifr-bonn.mpg.de	+49 228 525 246	Assessing the Timing Potential of LOFAR for Pulsars
ELP2012-022 U	Osowski	sosowski@mpifr-bonn.mpg.de	+49 228 525 324	Stefan Osowski collaborating with Joris
ELP2012-022 U	Osowski	sosowski@mpifr-bonn.mpg.de	+49 228 525 324	Stefan Osowski collaborating with Joris

## Experiment Information for Operator On-Duty Schedule

<b>ELD2013-001</b>	<b>Anderson</b>	<b>anderson@mpifr-bonn.mpg.de</b>	<b>+49 228 525 356</b>	<b>Project Manager</b>
ELD2013-001	Anderson	anderson@mpifr-bonn.mpg.de	+49 228 525 356	Project Manager
ELD2013-001	Anderson	anderson@mpifr-bonn.mpg.de	+49 228 525 356	Project Manager
<b>ELD2013-002</b>	<b>Kuniyoshi</b>	<b>mkuniyos@mpifr-bonn.mpg.de</b>	<b>+49 228 525 505</b>	<b>Project Scheduler</b>
ELD2013-002	Kuniyoshi	mkuniyos@mpifr-bonn.mpg.de	+49 228 525 505	Project Scheduler
ELD2013-002	Kuniyoshi	mkuniyos@mpifr-bonn.mpg.de	+49 228 525 505	Project Scheduler

## Time Usage [hours] for Normal Observations

Experiment Code	station	TBB	HBA	LBH	LBL	interfe	lofarAN	lofarBN	lofarx	lofarsr	fiber	BN--EF_	duty
<b>ELG2013-000</b>							<b>447.00</b>	<b>225.00</b>		<b>446.00</b>			
ELG2013-000 Q								76.00					
ELG2013-000 Q							139.00			139.00			
ELG2013-000 R							119.00	119.00		119.00			
ELG2013-000 R							122.00			122.00			
ELG2013-000 S							13.00			13.00			
ELG2013-000 S							1.00			1.00			
ELG2013-000 S							1.00						
ELG2013-000 S							22.00			22.00			
ELG2013-000 S							30.00	30.00		30.00			
<b>ELI2013-000</b>	<b>396.00</b>	<b>396.00</b>	<b>396.00</b>	<b>396.00</b>	<b>396.00</b>	<b>396.00</b>					<b>396.00</b>		
ELI2013-000	47.00	47.00	47.00	47.00	47.00	47.00					47.00		
ELI2013-000	120.00	120.00	120.00	120.00	120.00	120.00					120.00		
ELI2013-000	168.00	168.00	168.00	168.00	168.00	168.00					168.00		
ELI2013-000	61.00	61.00	61.00	61.00	61.00	61.00					61.00		
<b>ELI2013-007</b>	<b>50.00</b>	<b>50.00</b>	<b>50.00</b>	<b>50.00</b>			<b>50.00</b>	<b>50.00</b>	<b>50.00</b>	<b>50.00</b>			
ELI2013-007 J	25.00	25.00	25.00	25.00			25.00	25.00	25.00	25.00			
ELI2013-007 K	25.00	25.00	25.00	25.00			25.00	25.00	25.00	25.00			
<b>ELM2013-012</b>	<b>7.50</b>	<b>7.50</b>	<b>7.50</b>	<b>7.50</b>	<b>7.50</b>	<b>7.50</b>	<b>3.00</b>	<b>3.00</b>	<b>7.50</b>	<b>3.00</b>	<b>7.50</b>	<b>3.50</b>	
ELM2013-012	1.00	1.00	1.00	1.00	1.00	1.00			1.00		1.00		
ELM2013-012	0.50	0.50	0.50	0.50	0.50	0.50			0.50		0.50	0.50	
ELM2013-012	1.00	1.00	1.00	1.00	1.00	1.00			1.00		1.00		
ELM2013-012	2.00	2.00	2.00	2.00	2.00	2.00	2.00	2.00	2.00	2.00	2.00	2.00	
ELM2013-012	1.00	1.00	1.00	1.00	1.00	1.00			1.00		1.00		
ELM2013-012	1.00	1.00	1.00	1.00	1.00	1.00	1.00	1.00	1.00	1.00	1.00	1.00	
ELM2013-012	1.00	1.00	1.00	1.00	1.00	1.00			1.00		1.00		
<b>ELM2013-013</b>	<b>5.00</b>	<b>5.00</b>	<b>5.00</b>	<b>5.00</b>	<b>5.00</b>	<b>5.00</b>	<b>5.00</b>	<b>5.00</b>	<b>6.00</b>	<b>5.00</b>	<b>5.00</b>	<b>5.00</b>	
ELM2013-013									1.00				
ELM2013-013	5.00	5.00	5.00	5.00	5.00	5.00	5.00	5.00	5.00	5.00	5.00	5.00	
<b>ELM2013-017</b>	<b>4.50</b>	<b>4.50</b>							<b>4.50</b>				
ELM2013-017	4.50	4.50							4.50				
<b>ELM2013-018</b>	<b>2.50</b>		<b>2.50</b>						<b>2.50</b>				
ELM2013-018	2.50		2.50						2.50				
<b>ELP2012-022</b>	<b>203.50</b>		<b>203.50</b>					<b>304.00</b>	<b>251.50</b>				
ELP2012-022 S	37.00		37.00					37.00	37.00				
ELP2012-022 S								26.00					
ELP2012-022 T	3.00		3.00					3.00	3.00				
ELP2012-022 U	14.00		14.00					14.00	14.00				
ELP2012-022 U								2.50					
ELP2012-022 U	21.50		21.50					21.50	21.50				
ELP2012-022 U								2.00					
ELP2012-022 U								48.00	48.00				
ELP2012-022 V	115.00		115.00					115.00	115.00				
ELP2012-022 W	13.00		13.00					13.00	13.00				
ELP2012-022 W								22.00					
<b>ELP2013-002</b>	<b>4.00</b>		<b>4.00</b>	<b>4.00</b>			<b>4.00</b>	<b>4.00</b>	<b>4.00</b>	<b>4.00</b>			
ELP2013-002	4.00		4.00	4.00			4.00	4.00	4.00	4.00			
<b>ELT2012-005</b>	<b>1.00</b>		<b>1.00</b>					<b>2.00</b>	<b>1.00</b>	<b>1.00</b>		<b>1.00</b>	
ELT2012-005 A	1.00		1.00					1.00	1.00				
ELT2012-005 A								1.00		1.00		1.00	
<b>ELT2013-005</b>	<b>7.00</b>		<b>7.00</b>					<b>7.00</b>	<b>7.00</b>				
ELT2013-005	7.00		7.00					7.00	7.00				
<b>ELX2013-000</b>	<b>10.00</b>		<b>10.00</b>				<b>63.00</b>	<b>63.00</b>	<b>10.00</b>	<b>63.00</b>			

Experiment Code	station	TBB	HBA	LBH	LBL	interfe	lofarAN	lofarBN	lofarx	lofarsr	fiber	BN--EF_	duty
ELX2013-000 B	10.00		10.00					10.00	10.00				
ELX2013-000 B								24.00					



Experiment Code	station	TBB	HBA	LBH	LBL	interfe	lofarAN	lofarBN	lofarx	lofarsr	fiber	BN--EF_	duty
ELX2013-000	C							29.00					
ELX2013-000	C						63.00			63.00			

## Time Usage [hours] for Other Actions

Experiment Code	station	TBB	HBA	LBH	LBL	interfe	lofarAN	lofarBN	lofarx	lofarsr	fiber	BN--EF_	duty
ELP2012-022									4.50				
ELP2012-022	U								2.50				
ELP2012-022	U								2.00				



# Summary of Time Usage [total=744.00 hours] for MPIfR Effelsberg LOFAR Station

Experiment Code	station	TBB	HBA	LBH	LBL	interfe	lofarAN	lofarBN	lofarx	lofarsr	fiber	BN--EF_	duty
<b>normal</b>													
Science A (Astrometry)													
Science C (Cosmology)													
Science E (Extragalactic)													
Science G (Galactic) 447.00 225.00 446.00													
Science H (Ionosphere)													
Science N (AGN)													
Science O (Other)													
Science P (Pulsar) 207.50 207.50 4.00 4.00 308.00 255.50 4.00													
Science R (Cosmic Rays)													
Science S (Solar System)													
Test Observation 8.00 8.00 9.00 8.00 1.00 1.00													
Maintenance Mode 19.50 17.00 15.00 12.50 12.50 12.50 8.00 8.00 20.50 8.00 12.50 8.50													
ILT Mode 446.00 446.00 446.00 446.00 396.00 396.00 50.00 50.00 50.00 50.00 396.00													
<b>Effelsberg Mode</b>													
<b>GLOW Mode</b>													
<b>Juelich Mode</b>													
Station Failure 10.00 10.00 63.00 63.00 10.00 63.00													
Unknown Code													
Idle 53.00 281.00 57.50 281.50 335.50 335.50 172.00 81.00 400.00 172.00 335.50 734.50													
<b>piggy-up</b>													
Piggyback Control													
Unknown Code													
Idle 744.00 744.00 744.00 744.00 744.00 744.00 744.00 744.00 744.00 744.00 744.00 744.00													
<b>piggy-down</b>													
Piggyback Without Control 4.50													
Unknown Code													
Idle 744.00 744.00 744.00 744.00 744.00 744.00 744.00 744.00 739.50 744.00 744.00 744.00													
<b>warning</b>													
Experiment Warning													
Unknown Code													
Idle 744.00 744.00 744.00 744.00 744.00 744.00 744.00 744.00 744.00 744.00 744.00 744.00													
<b>steal</b>													
Override Possible													
Unknown Code													
Idle 744.00 744.00 744.00 744.00 744.00 744.00 744.00 744.00 744.00 744.00 744.00 744.00													
<b>duty</b>													
100 m Operator													
Anderson 288.00													
Kuniyoshi 456.00													
Horneffer													
Other													
Unknown													
Unknown Code													
Idle 0.00													

