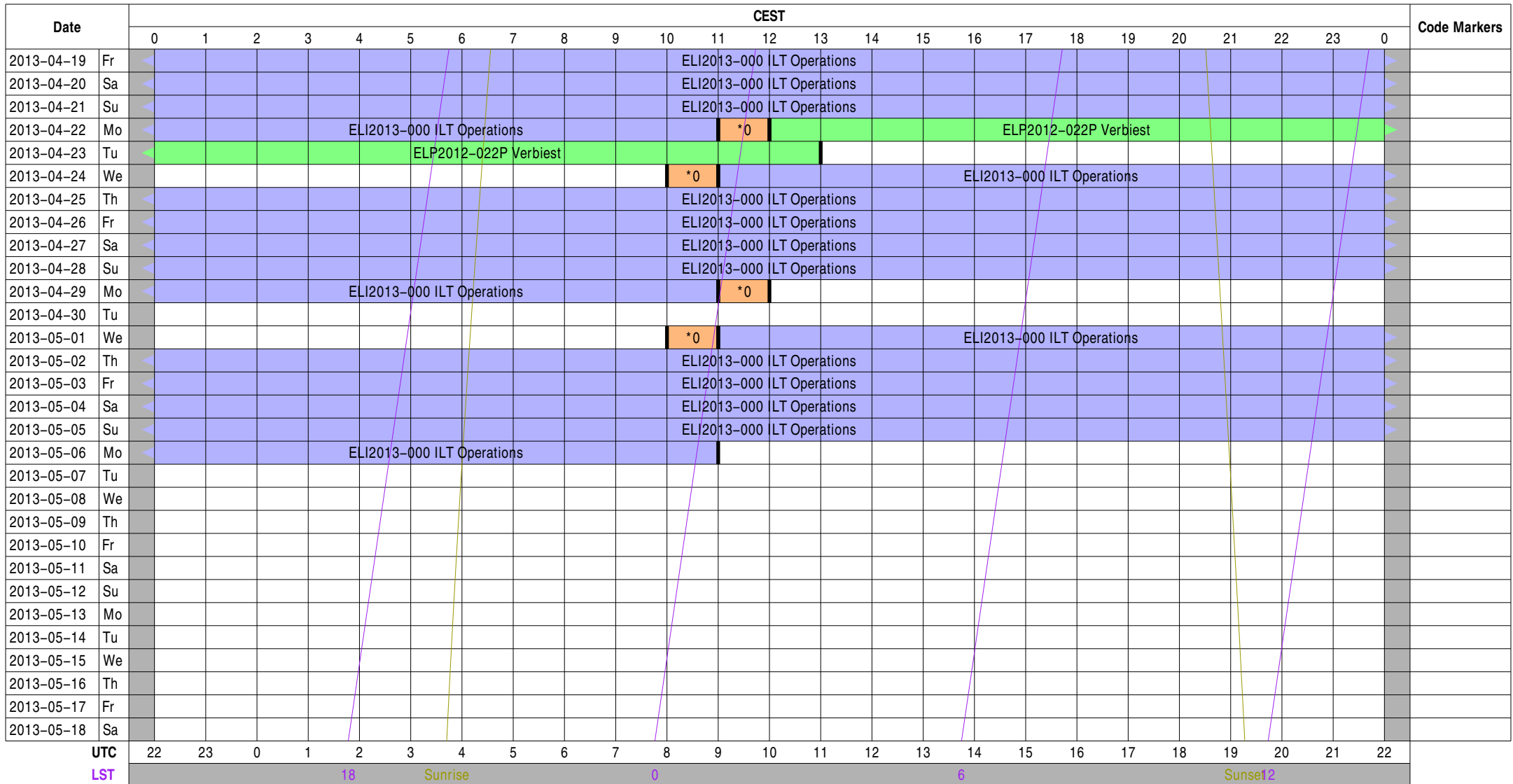


Observing Plan for Station Control (LCU)

MPIfR Effelsberg LOFAR Station

2013-04-19 through 2013-05-18

For any publication based on observations with the Effelsberg LOFAR station, please use the following acknowledgment: "Based on observations made with the Effelsberg LOFAR station of the Max-Planck-Institut für Radioastronomie (MPIfR) at Effelsberg."



Normal Experiment Code Markers

0 ELM2013-012 Kuniyoshi, Horneff

Other Code Markers

Color Meanings

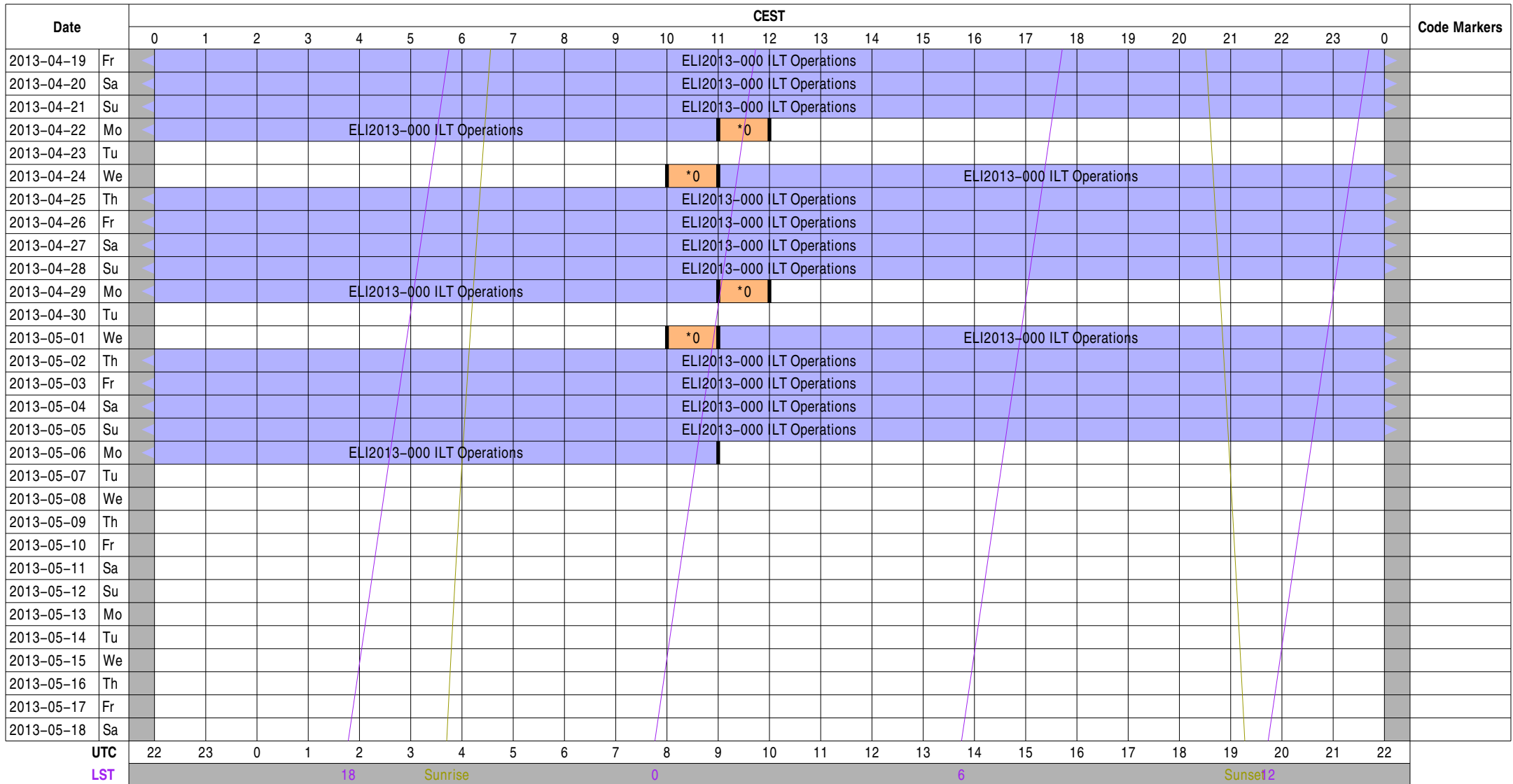
Science A (Astrometry)	Science N (AGN)	Test Observation	Juelich Mode
Science C (Cosmology)	Science O (Other)	Maintenance Mode	Piggyback Control
Science E (Extragalactic)	Science P (Pulsar)	ILT Mode	Piggyback Without Control
Science G (Galactic)	Science R (Cosmic Rays)	Effelsberg Mode	Experiment Warning
Science H (Ionosphere)	Science S (Solar System)	GLOW Mode	Override Possible

Observing Plan for Transient Buffer Boards

MPIfR Effelsberg LOFAR Station

2013-04-19 through 2013-05-18

For any publication based on observations with the Effelsberg LOFAR station, please use the following acknowledgment: "Based on observations made with the Effelsberg LOFAR station of the Max-Planck-Institut für Radioastronomie (MPIfR) at Effelsberg."



Normal Experiment Code Markers

0 ELM2013-012 Kuniyoshi, Horneff

Other Code Markers

Color Meanings

Science A (Astrometry)	Science N (AGN)	Test Observation	Juelich Mode
Science C (Cosmology)	Science O (Other)	Maintenance Mode	Piggyback Control
Science E (Extragalactic)	Science P (Pulsar)	ILT Mode	Piggyback Without Control
Science G (Galactic)	Science R (Cosmic Rays)	Effelsberg Mode	Experiment Warning
Science H (Ionosphere)	Science S (Solar System)	GLOW Mode	Override Possible

Observing Plan for HBA MPIfR Effelsberg LOFAR Station 2013-04-19 through 2013-05-18

For any publication based on observations with the Effelsberg LOFAR station, please use the following acknowledgment: "Based on observations made with the Effelsberg LOFAR station of the Max-Planck-Institut für Radioastronomie (MPIfR) at Effelsberg."

Date	CEST																								Code Markers		
	0	1	2	3	4	5	6	7	8	9	10	11	12	13	14	15	16	17	18	19	20	21	22	23		0	
2013-04-19	Fr																										
2013-04-20	Sa																										
2013-04-21	Su																										
2013-04-22	Mo																										
2013-04-23	Tu																										
2013-04-24	We																										
2013-04-25	Th																										
2013-04-26	Fr																										
2013-04-27	Sa																										
2013-04-28	Su																										
2013-04-29	Mo																										
2013-04-30	Tu																										
2013-05-01	We																										
2013-05-02	Th																										
2013-05-03	Fr																										
2013-05-04	Sa																										
2013-05-05	Su																										
2013-05-06	Mo																										
2013-05-07	Tu																										
2013-05-08	We																										
2013-05-09	Th																										
2013-05-10	Fr																										
2013-05-11	Sa																										
2013-05-12	Su																										
2013-05-13	Mo																										
2013-05-14	Tu																										
2013-05-15	We																										
2013-05-16	Th																										
2013-05-17	Fr																										
2013-05-18	Sa																										
UTC		22	23	0	1	2	3	4	5	6	7	8	9	10	11	12	13	14	15	16	17	18	19	20	21	22	
LST					18		Sunrise					0						6					Sunset 2				

Normal Experiment Code Markers

0 ELM2013-012 Kuniyoshi, Horneff

Other Code Markers

Color Meanings

Science A (Astrometry)	Science N (AGN)	Test Observation	Juelich Mode
Science C (Cosmology)	Science O (Other)	Maintenance Mode	Piggyback Control
Science E (Extragalactic)	Science P (Pulsar)	ILT Mode	Piggyback Without Control
Science G (Galactic)	Science R (Cosmic Rays)	Effelsberg Mode	Experiment Warning
Science H (Ionosphere)	Science S (Solar System)	GLOW Mode	Override Possible

Observing Plan for Low Band High (LBA) MPIfR Effelsberg LOFAR Station 2013-04-19 through 2013-05-18

For any publication based on observations with the Effelsberg LOFAR station, please use the following acknowledgment: "Based on observations made with the Effelsberg LOFAR station of the Max-Planck-Institut für Radioastronomie (MPIfR) at Effelsberg."

Date	CEST																								Code Markers		
	0	1	2	3	4	5	6	7	8	9	10	11	12	13	14	15	16	17	18	19	20	21	22	23		0	
2013-04-19	Fr											ELI2013-000	LT Operations														
2013-04-20	Sa											ELI2013-000	LT Operations														
2013-04-21	Su											ELI2013-000	LT Operations														
2013-04-22	Mo	ELI2013-000 ILT Operations										*0															
2013-04-23	Tu																										
2013-04-24	We											*0		ELI2013-000 ILT Operations													
2013-04-25	Th											ELI2013-000	LT Operations														
2013-04-26	Fr											ELI2013-000	LT Operations														
2013-04-27	Sa											ELI2013-000	LT Operations														
2013-04-28	Su											ELI2013-000	LT Operations														
2013-04-29	Mo	ELI2013-000 ILT Operations										*0															
2013-04-30	Tu																										
2013-05-01	We											*0		ELI2013-000 ILT Operations													
2013-05-02	Th											ELI2013-000	LT Operations														
2013-05-03	Fr											ELI2013-000	LT Operations														
2013-05-04	Sa											ELI2013-000	LT Operations														
2013-05-05	Su											ELI2013-000	LT Operations														
2013-05-06	Mo	ELI2013-000 ILT Operations																									
2013-05-07	Tu																										
2013-05-08	We																										
2013-05-09	Th																										
2013-05-10	Fr																										
2013-05-11	Sa																										
2013-05-12	Su																										
2013-05-13	Mo																										
2013-05-14	Tu																										
2013-05-15	We																										
2013-05-16	Th																										
2013-05-17	Fr																										
2013-05-18	Sa																										
UTC	22	23	0	1	2	3	4	5	6	7	8	9	10	11	12	13	14	15	16	17	18	19	20	21	22		
LST	18										Sunrise		0		6						Sunset 2						

Normal Experiment Code Markers

0 ELM2013-012 Kuniyoshi, Horneff

Other Code Markers

Color Meanings

Science A (Astrometry)	Science N (AGN)	Test Observation	Juelich Mode
Science C (Cosmology)	Science O (Other)	Maintenance Mode	Piggyback Control
Science E (Extragalactic)	Science P (Pulsar)	ILT Mode	Piggyback Without Control
Science G (Galactic)	Science R (Cosmic Rays)	Effelsberg Mode	Experiment Warning
Science H (Ionosphere)	Science S (Solar System)	GLOW Mode	Override Possible

Observing Plan for Low Band Low, Unused Inputs

MPIfR Effelsberg LOFAR Station

2013-04-19 through 2013-05-18

For any publication based on observations with the Effelsberg LOFAR station, please use the following acknowledgment: "Based on observations made with the Effelsberg LOFAR station of the Max-Planck-Institut für Radioastronomie (MPIfR) at Effelsberg."

Date	CEST																								Code Markers	
	0	1	2	3	4	5	6	7	8	9	10	11	12	13	14	15	16	17	18	19	20	21	22	23		0
2013-04-19	Fr											ELI2013-000	LT Operations													
2013-04-20	Sa											ELI2013-000	LT Operations													
2013-04-21	Su											ELI2013-000	LT Operations													
2013-04-22	Mo					ELI2013-000	ILT Operations					*0														
2013-04-23	Tu																									
2013-04-24	We										*0								ELI2013-000	ILT Operations						
2013-04-25	Th										ELI2013-000	LT Operations														
2013-04-26	Fr										ELI2013-000	LT Operations														
2013-04-27	Sa										ELI2013-000	LT Operations														
2013-04-28	Su										ELI2013-000	LT Operations														
2013-04-29	Mo					ELI2013-000	ILT Operations					*0														
2013-04-30	Tu																									
2013-05-01	We										*0								ELI2013-000	ILT Operations						
2013-05-02	Th										ELI2013-000	LT Operations														
2013-05-03	Fr										ELI2013-000	LT Operations														
2013-05-04	Sa										ELI2013-000	LT Operations														
2013-05-05	Su										ELI2013-000	LT Operations														
2013-05-06	Mo					ELI2013-000	ILT Operations																			
2013-05-07	Tu																									
2013-05-08	We																									
2013-05-09	Th																									
2013-05-10	Fr																									
2013-05-11	Sa																									
2013-05-12	Su																									
2013-05-13	Mo																									
2013-05-14	Tu																									
2013-05-15	We																									
2013-05-16	Th																									
2013-05-17	Fr																									
2013-05-18	Sa																									

UTC 22 23 0 1 2 3 4 5 6 7 8 9 10 11 12 13 14 15 16 17 18 19 20 21 22
 LST 18 Sunrise 0 6 Sunset 2

Normal Experiment Code Markers

0 ELM2013-012 Kuniyoshi, Horneff

Other Code Markers

Color Meanings

Science A (Astrometry)	Science N (AGN)	Test Observation	Juelich Mode
Science C (Cosmology)	Science O (Other)	Maintenance Mode	Piggyback Control
Science E (Extragalactic)	Science P (Pulsar)	ILT Mode	Piggyback Without Control
Science G (Galactic)	Science R (Cosmic Rays)	Effelsberg Mode	Experiment Warning
Science H (Ionosphere)	Science S (Solar System)	GLOW Mode	Override Possible

Observing Plan for Station Interferometer MPIfR Effelsberg LOFAR Station 2013-04-19 through 2013-05-18

For any publication based on observations with the Effelsberg LOFAR station, please use the following acknowledgment: "Based on observations made with the Effelsberg LOFAR station of the Max-Planck-Institut für Radioastronomie (MPIfR) at Effelsberg."

Date	CEST																								Code Markers		
	0	1	2	3	4	5	6	7	8	9	10	11	12	13	14	15	16	17	18	19	20	21	22	23		0	
2013-04-19	Fr											ELI2013-000	LT Operations														
2013-04-20	Sa											ELI2013-000	LT Operations														
2013-04-21	Su											ELI2013-000	LT Operations														
2013-04-22	Mo	ELI2013-000 ILT Operations										*0															
2013-04-23	Tu																										
2013-04-24	We											*0		ELI2013-000 ILT Operations													
2013-04-25	Th											ELI2013-000	LT Operations														
2013-04-26	Fr											ELI2013-000	LT Operations														
2013-04-27	Sa											ELI2013-000	LT Operations														
2013-04-28	Su											ELI2013-000	LT Operations														
2013-04-29	Mo	ELI2013-000 ILT Operations										*0															
2013-04-30	Tu																										
2013-05-01	We											*0		ELI2013-000 ILT Operations													
2013-05-02	Th											ELI2013-000	LT Operations														
2013-05-03	Fr											ELI2013-000	LT Operations														
2013-05-04	Sa											ELI2013-000	LT Operations														
2013-05-05	Su											ELI2013-000	LT Operations														
2013-05-06	Mo	ELI2013-000 ILT Operations																									
2013-05-07	Tu																										
2013-05-08	We																										
2013-05-09	Th																										
2013-05-10	Fr																										
2013-05-11	Sa																										
2013-05-12	Su																										
2013-05-13	Mo																										
2013-05-14	Tu																										
2013-05-15	We																										
2013-05-16	Th																										
2013-05-17	Fr																										
2013-05-18	Sa																										
UTC		22	23	0	1	2	3	4	5	6	7	8	9	10	11	12	13	14	15	16	17	18	19	20	21	22	
LST		18										Sunrise				0				6				Sunset 2			

Normal Experiment Code Markers

0 ELM2013-012 Kuniyoshi, Horneff

Other Code Markers

Color Meanings

Science A (Astrometry)	Science N (AGN)	Test Observation	Juelich Mode
Science C (Cosmology)	Science O (Other)	Maintenance Mode	Piggyback Control
Science E (Extragalactic)	Science P (Pulsar)	ILT Mode	Piggyback Without Control
Science G (Galactic)	Science R (Cosmic Rays)	Effelsberg Mode	Experiment Warning
Science H (Ionosphere)	Science S (Solar System)	GLOW Mode	Override Possible

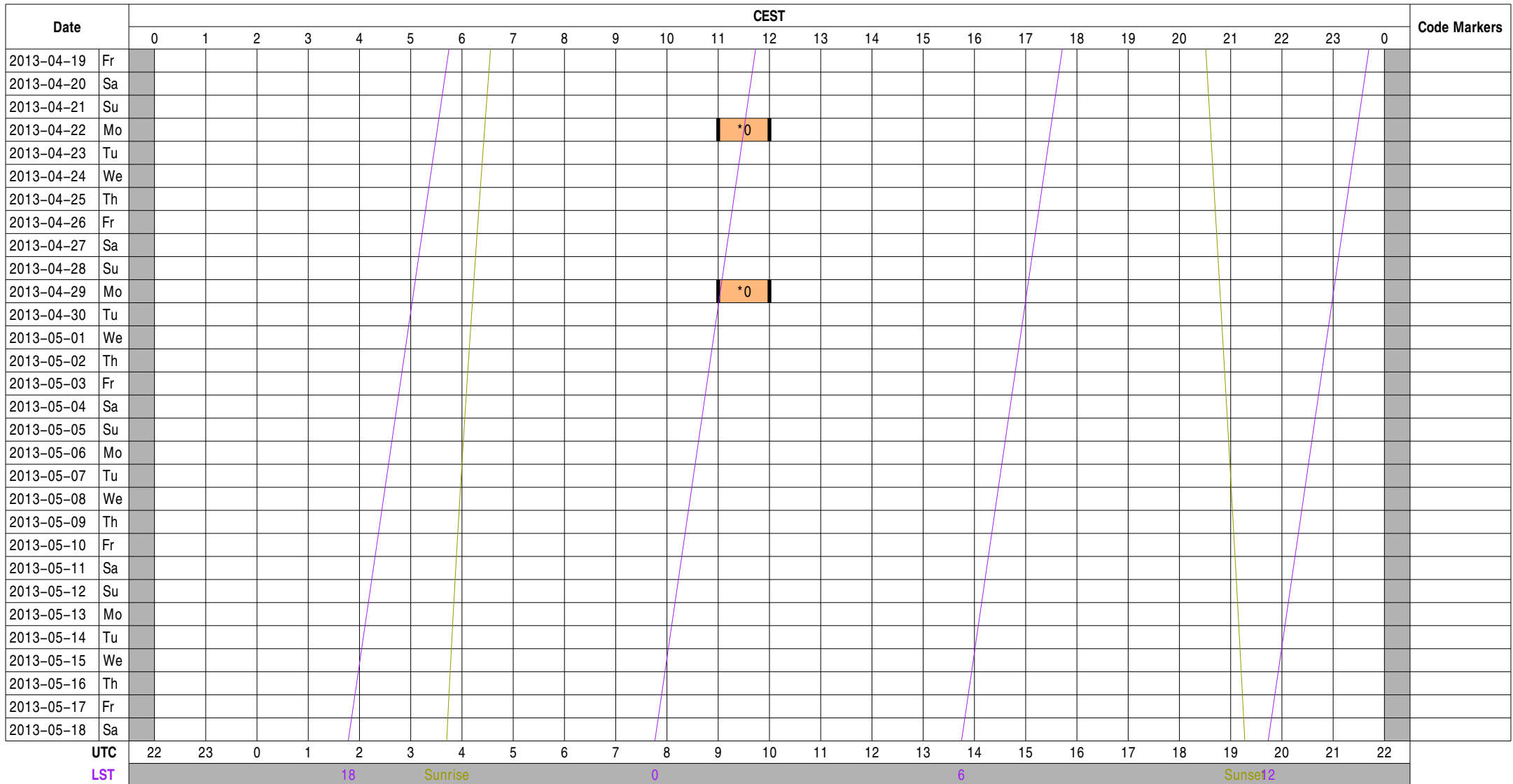
Version: draft
 Creation Date: 2013-04-19T12:43:38.889162Z
 Operator Telephone: +49 2257 301 155
 Web Page: https://deki.mpifr-bonn.mpg.de/Cooperations/LOFAR/Effelsberg_LOFAR_Schedule

Observing Plan for IofarAN Computers

MPIfR Effelsberg LOFAR Station

2013-04-19 through 2013-05-18

For any publication based on observations with the Effelsberg LOFAR station, please use the following acknowledgment: "Based on observations made with the Effelsberg LOFAR station of the Max-Planck-Institut für Radioastronomie (MPIfR) at Effelsberg."



Normal Experiment Code Markers

0 ELM2013-012 Kuniyoshi, Horneff

Other Code Markers

Color Meanings

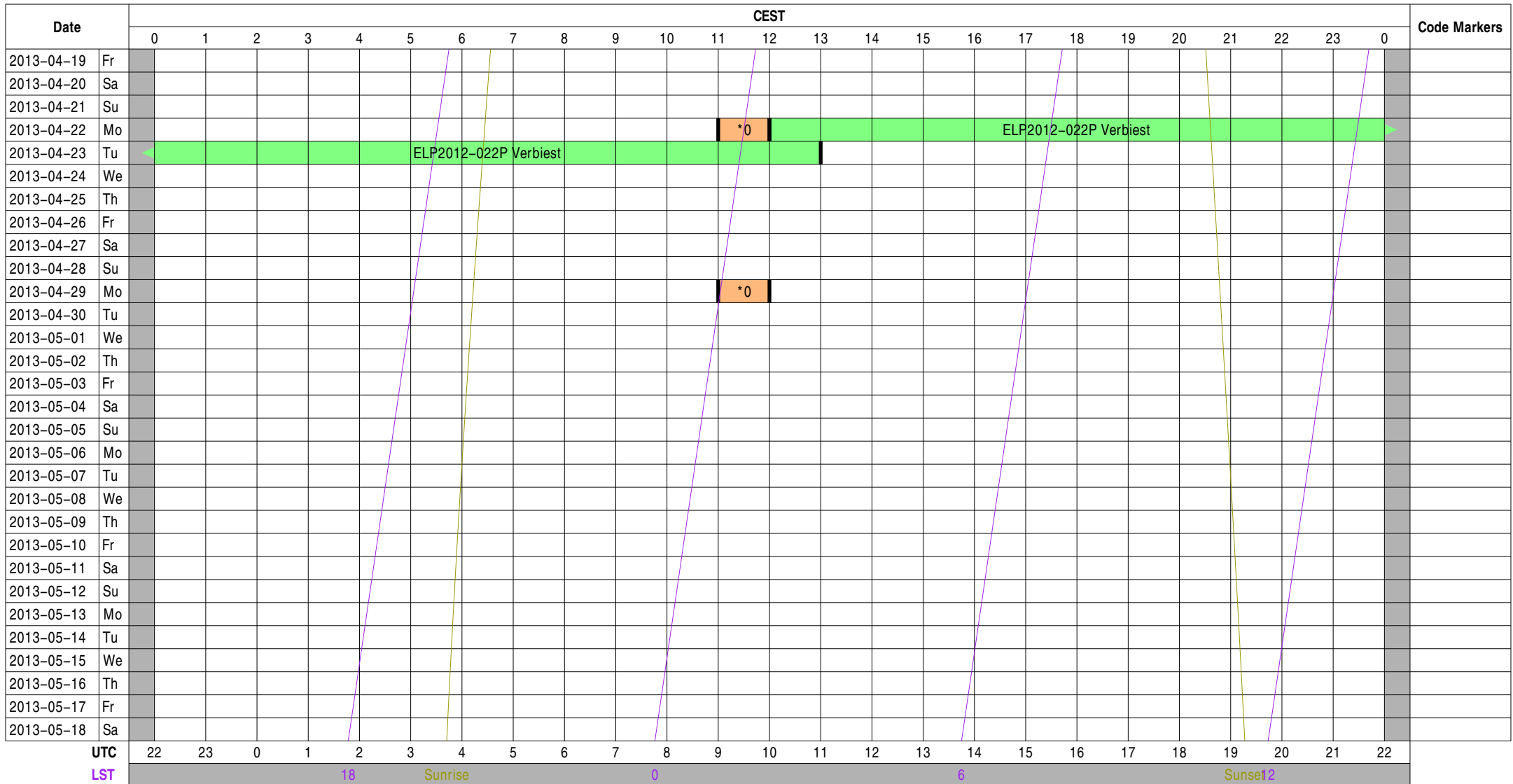
Science A (Astrometry)	Science N (AGN)	Test Observation	Juelich Mode
Science C (Cosmology)	Science O (Other)	Maintenance Mode	Piggyback Control
Science E (Extragalactic)	Science P (Pulsar)	ILT Mode	Piggyback Without Control
Science G (Galactic)	Science R (Cosmic Rays)	Effelsberg Mode	Experiment Warning
Science H (Ionosphere)	Science S (Solar System)	GLOW Mode	Override Possible

Observing Plan for IofarBN Computers

MPIfR Effelsberg LOFAR Station

2013-04-19 through 2013-05-18

For any publication based on observations with the Effelsberg LOFAR station, please use the following acknowledgment: "Based on observations made with the Effelsberg LOFAR station of the Max-Planck-Institut für Radioastronomie (MPIfR) at Effelsberg."



Normal Experiment Code Markers

0 ELM2013-012 Kuniyoshi, Horneff

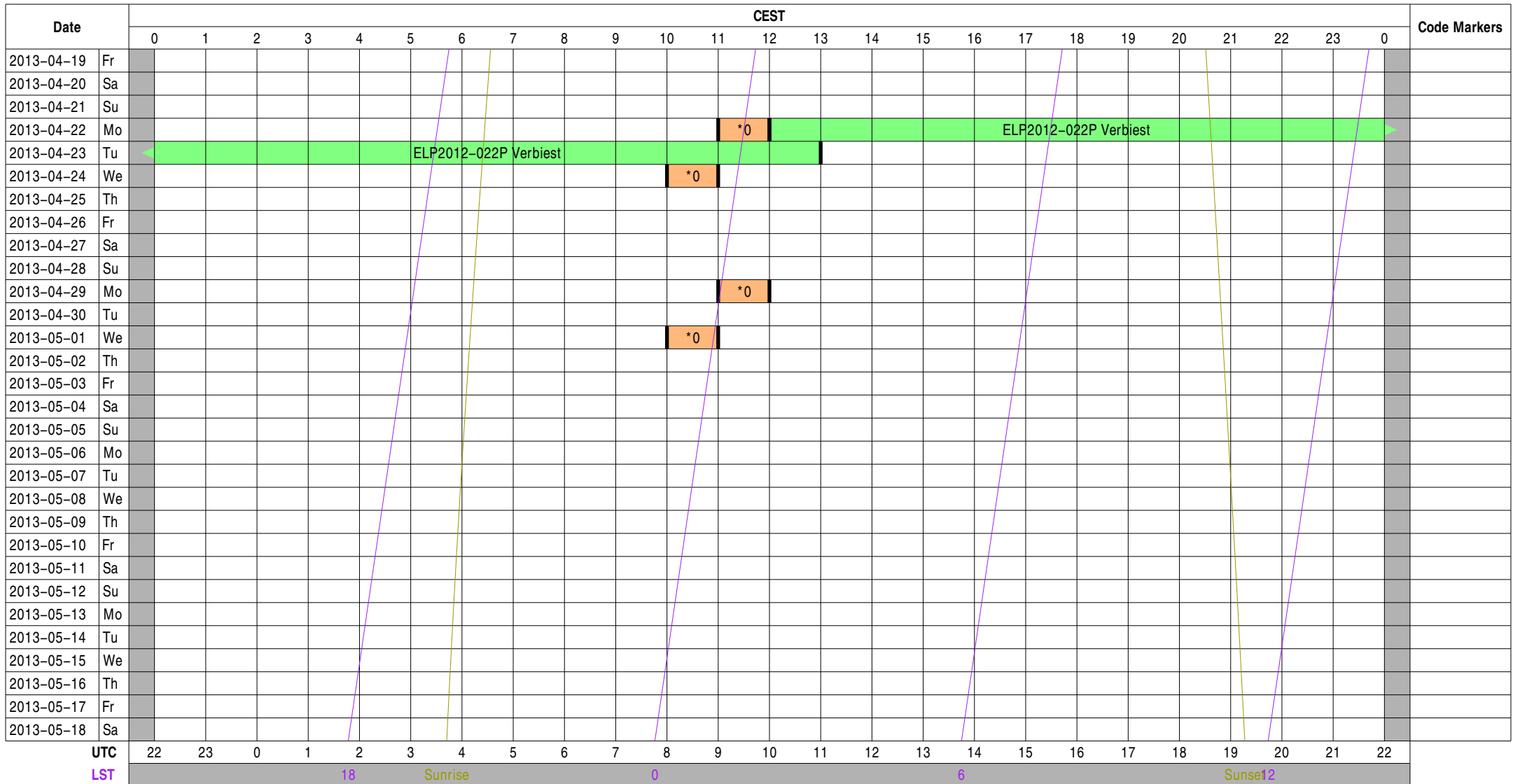
Other Code Markers

Color Meanings

Science A (Astrometry)	Science N (AGN)	Test Observation	Juelich Mode
Science C (Cosmology)	Science O (Other)	Maintenance Mode	Piggyback Control
Science E (Extragalactic)	Science P (Pulsar)	ILT Mode	Piggyback Without Control
Science G (Galactic)	Science R (Cosmic Rays)	Effelsberg Mode	Experiment Warning
Science H (Ionosphere)	Science S (Solar System)	GLOW Mode	Override Possible

Observing Plan for lofarx Computer MPIfR Effelsberg LOFAR Station 2013-04-19 through 2013-05-18

For any publication based on observations with the Effelsberg LOFAR station, please use the following acknowledgment: "Based on observations made with the Effelsberg LOFAR station of the Max-Planck-Institut für Radioastronomie (MPIfR) at Effelsberg."



Normal Experiment Code Markers

0 ELM2013-012 Kuniyoshi, Horneff

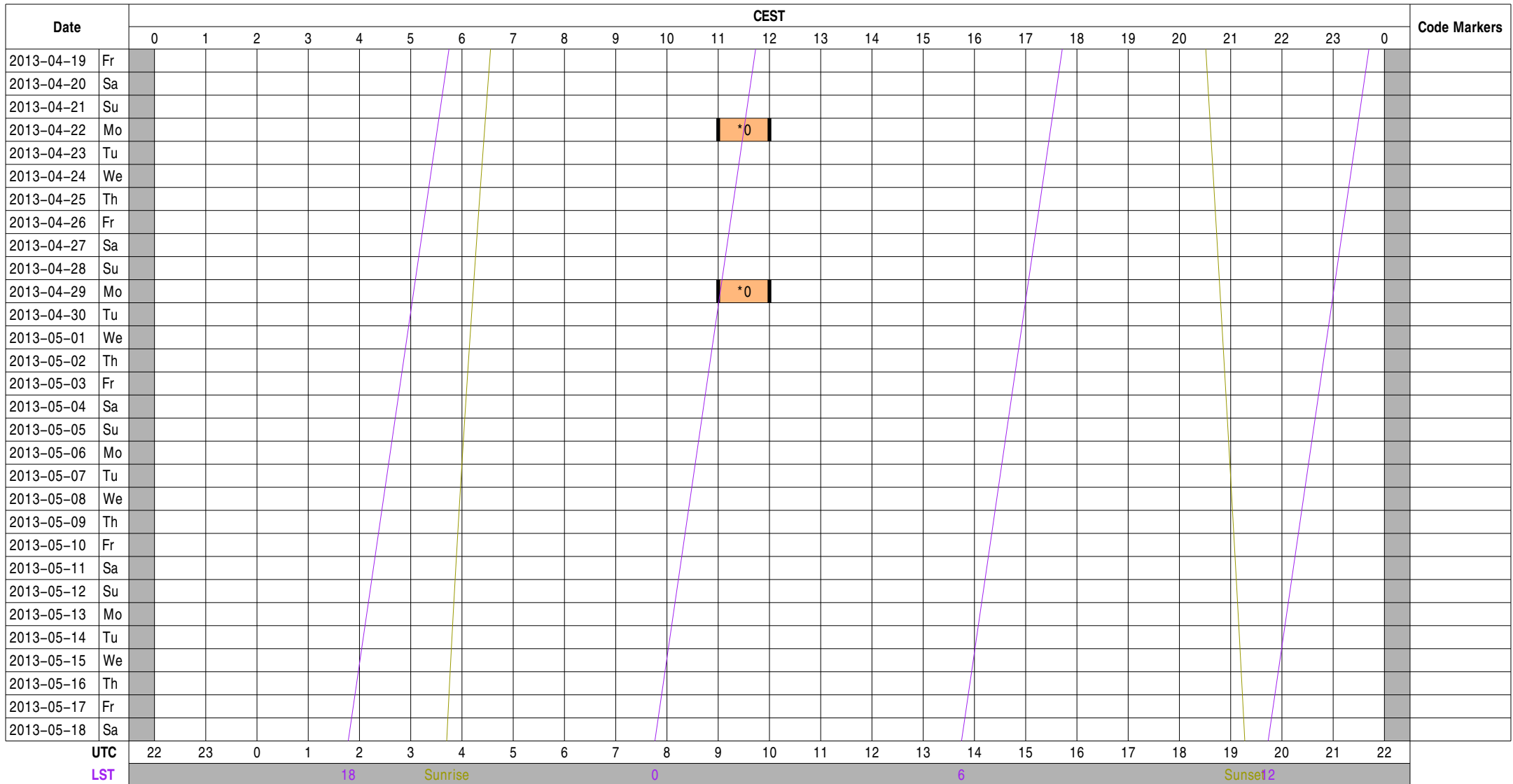
Other Code Markers

Color Meanings

- | | | | |
|---------------------------|--------------------------|------------------|---------------------------|
| Science A (Astrometry) | Science N (AGN) | Test Observation | Juelich Mode |
| Science C (Cosmology) | Science O (Other) | Maintenance Mode | Piggyback Control |
| Science E (Extragalactic) | Science P (Pulsar) | ILT Mode | Piggyback Without Control |
| Science G (Galactic) | Science R (Cosmic Rays) | Effelsberg Mode | Experiment Warning |
| Science H (Ionosphere) | Science S (Solar System) | GLOW Mode | Override Possible |

Observing Plan for Iofarsrv Computer MPIfR Effelsberg LOFAR Station 2013-04-19 through 2013-05-18

For any publication based on observations with the Effelsberg LOFAR station, please use the following acknowledgment: "Based on observations made with the Effelsberg LOFAR station of the Max-Planck-Institut für Radioastronomie (MPIfR) at Effelsberg."



Normal Experiment Code Markers

0 ELM2013-012 Kuniyoshi, Horneff

Other Code Markers

Color Meanings

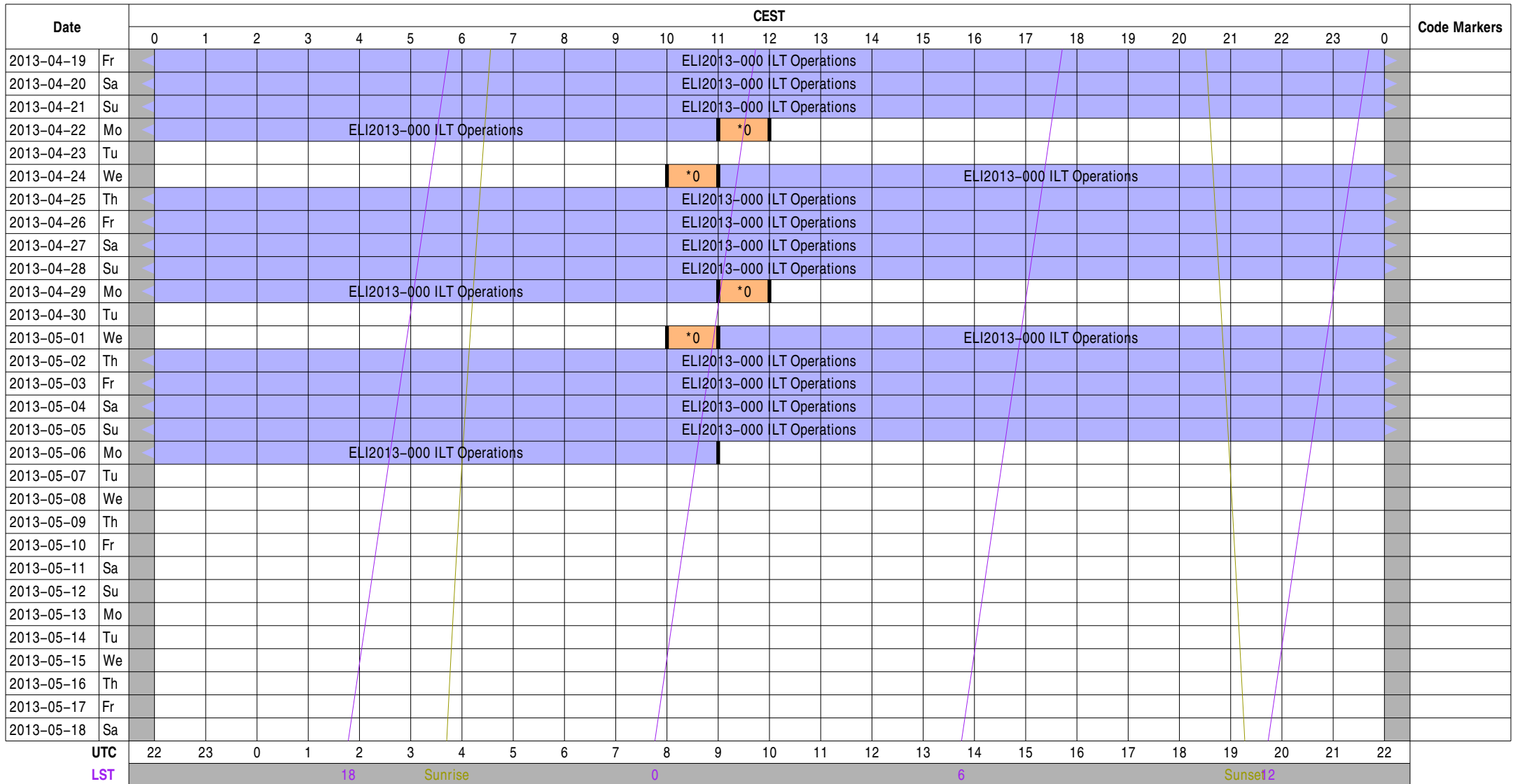
Science A (Astrometry)	Science N (AGN)	Test Observation	Juelich Mode
Science C (Cosmology)	Science O (Other)	Maintenance Mode	Piggyback Control
Science E (Extragalactic)	Science P (Pulsar)	ILT Mode	Piggyback Without Control
Science G (Galactic)	Science R (Cosmic Rays)	Effelsberg Mode	Experiment Warning
Science H (Ionosphere)	Science S (Solar System)	GLOW Mode	Override Possible

Observing Plan for LOFAR Fiber Connection

MPIfR Effelsberg LOFAR Station

2013-04-19 through 2013-05-18

For any publication based on observations with the Effelsberg LOFAR station, please use the following acknowledgment: "Based on observations made with the Effelsberg LOFAR station of the Max-Planck-Institut für Radioastronomie (MPIfR) at Effelsberg."



Normal Experiment Code Markers

0 ELM2013-012 Kuniyoshi, Horneff

Other Code Markers

Color Meanings

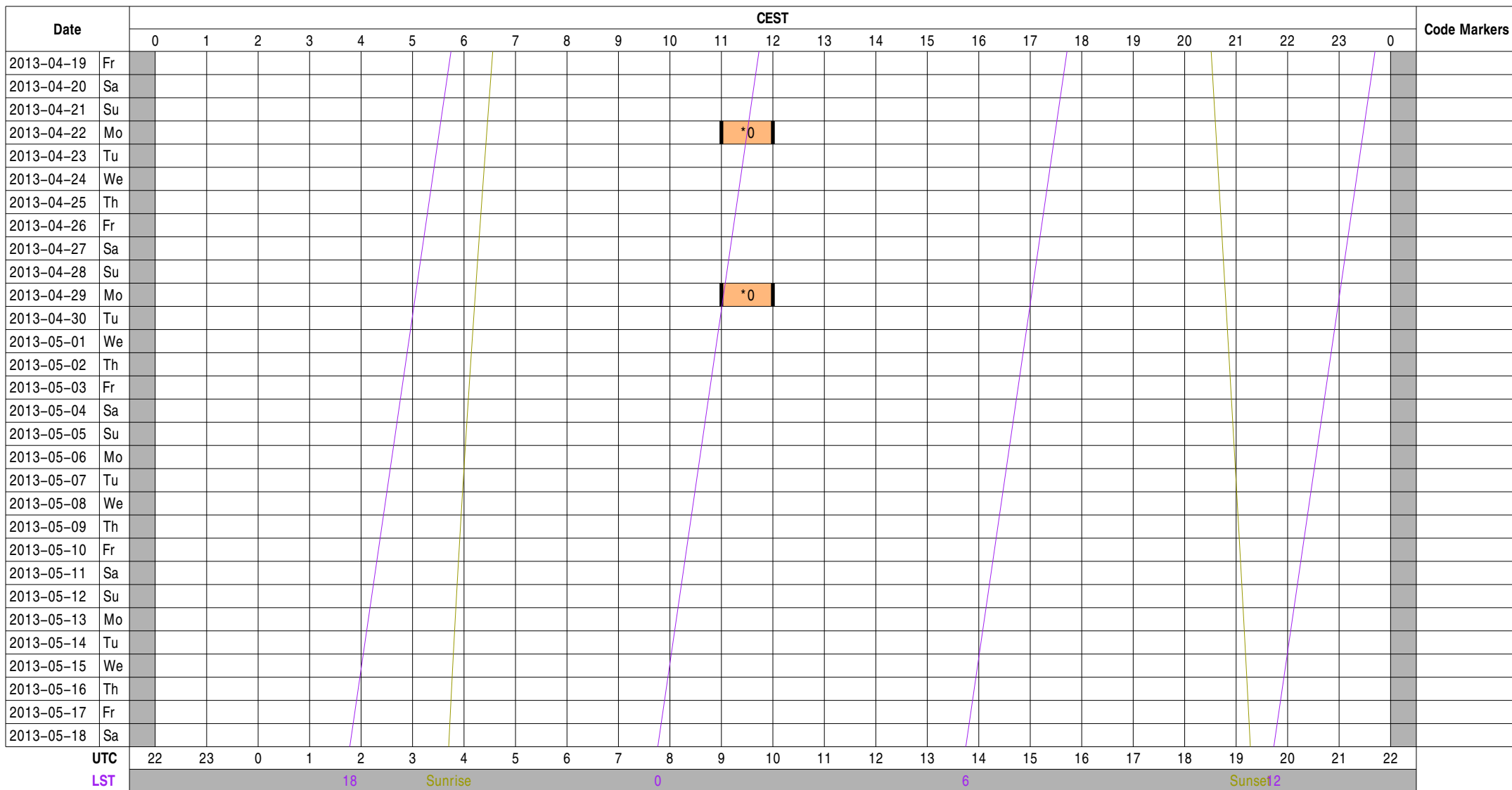
Science A (Astrometry)	Science N (AGN)	Test Observation	Juelich Mode
Science C (Cosmology)	Science O (Other)	Maintenance Mode	Piggyback Control
Science E (Extragalactic)	Science P (Pulsar)	ILT Mode	Piggyback Without Control
Science G (Galactic)	Science R (Cosmic Rays)	Effelsberg Mode	Experiment Warning
Science H (Ionosphere)	Science S (Solar System)	GLOW Mode	Override Possible

Observing Plan for LOFAR Bonn--EF Fiber Connection

MPIfR Effelsberg LOFAR Station

2013-04-19 through 2013-05-18

For any publication based on observations with the Effelsberg LOFAR station, please use the following acknowledgment: "Based on observations made with the Effelsberg LOFAR station of the Max-Planck-Institut für Radioastronomie (MPIfR) at Effelsberg."



Normal Experiment Code Markers

0 ELM2013-012 Kuniyoshi, Horneff

Other Code Markers

Color Meanings

Science A (Astrometry)	Science N (AGN)	Test Observation	Juelich Mode
Science C (Cosmology)	Science O (Other)	Maintenance Mode	Piggyback Control
Science E (Extragalactic)	Science P (Pulsar)	ILT Mode	Piggyback Without Control
Science G (Galactic)	Science R (Cosmic Rays)	Effelsberg Mode	Experiment Warning
Science H (Ionosphere)	Science S (Solar System)	GLOW Mode	Override Possible

Observing Plan for Operator On-Duty

MPIfR Effelsberg LOFAR Station

2013-04-19 through 2013-05-18

For any publication based on observations with the Effelsberg LOFAR station, please use the following acknowledgment: "Based on observations made with the Effelsberg LOFAR station of the Max-Planck-Institut für Radioastronomie (MPIfR) at Effelsberg."

Date	CEST																								Code Markers		
	0	1	2	3	4	5	6	7	8	9	10	11	12	13	14	15	16	17	18	19	20	21	22	23		0	
2013-04-19	Fr																										
2013-04-20	Sa																										
2013-04-21	Su																										
2013-04-22	Mo																										
2013-04-23	Tu																										
2013-04-24	We																										
2013-04-25	Th																										
2013-04-26	Fr																										
2013-04-27	Sa																										
2013-04-28	Su																										
2013-04-29	Mo																										
2013-04-30	Tu																										
2013-05-01	We																										
2013-05-02	Th																										
2013-05-03	Fr																										
2013-05-04	Sa																										
2013-05-05	Su																										
2013-05-06	Mo																										
2013-05-07	Tu																										
2013-05-08	We																										
2013-05-09	Th																										
2013-05-10	Fr																										
2013-05-11	Sa																										
2013-05-12	Su																										
2013-05-13	Mo																										
2013-05-14	Tu																										
2013-05-15	We																										
2013-05-16	Th																										
2013-05-17	Fr																										
2013-05-18	Sa																										

UTC

LST

22 23 0 1 2 3 4 5 6 7 8 9 10 11 12 13 14 15 16 17 18 19 20 21 22

18 Sunrise 0 6 Sunset2

Normal Experiment Code Markers

Other Code Markers

Color Meanings

- 100 m Operator
- Anderson
- Kuniyoshi
- Horneffer
- Other
- Unknown

Experiment Information for Normal Observations

ELI2013-000	ILT Operations	observer@astron.nl	+31 521 595 777	Main ILT Observations, ILT Operations only on-duty 9--17, M
ELI2013-000	ILT Operations	observer@astron.nl	+31 521 595 777	Main ILT Observations, ILT Operations only on-duty 9--17, M
ELI2013-000	ILT Operations	observer@astron.nl	+31 521 595 777	Main ILT Observations, ILT Operations only on-duty 9--17, M
ELI2013-000	ILT Operations	observer@astron.nl	+31 521 595 777	Main ILT Observations, ILT Operations only on-duty 9--17, M
ELM2013-012	Kuniyoshi, Horneffer, Anderson	lofar-ops@mpifr-bonn.mpg.de	+49 228 525 356	Handover operations for local to ILT mode (MPIfR time)
ELM2013-012	Kuniyoshi, Horneffer, Anderson	lofar-ops@mpifr-bonn.mpg.de	+49 228 525 356	Handover operations for local to ILT mode (MPIfR time)
ELM2013-012	Kuniyoshi, Horneffer, Anderson	lofar-ops@mpifr-bonn.mpg.de	+49 228 525 356	Handover operations for local to ILT mode (MPIfR time)
ELM2013-012	Kuniyoshi, Horneffer, Anderson	lofar-ops@mpifr-bonn.mpg.de	+49 228 525 356	Handover operations for local to ILT mode (MPIfR time)
ELM2013-012	Kuniyoshi, Horneffer, Anderson	lofar-ops@mpifr-bonn.mpg.de	+49 228 525 356	Handover operations for local to ILT mode (MPIfR time)
ELP2012-022	Verbiest	verbiest@mpifr-bonn.mpg.de	+49 228 525 246	Assessing the Timing Potential of LOFAR for Pulsars
ELP2012-022 P	Verbiest	verbiest@mpifr-bonn.mpg.de	+49 228 525 246	Assessing the Timing Potential of LOFAR for Pulsars

Experiment Information for Other Actions

Experiment Information for Operator On-Duty Schedule

ELD2013-000	EF	operator@mpifr-bonn.mpg.de	+49 2257 301 155	Effelsberg operator
ELD2013-000	EF	operator@mpifr-bonn.mpg.de	+49 2257 301 155	Effelsberg operator
ELD2013-002	Kuniyoshi	mkuniyos@mpifr-bonn.mpg.de	+49 228 525 505	Project Scheduler
ELD2013-002	Kuniyoshi	mkuniyos@mpifr-bonn.mpg.de	+49 228 525 505	Project Scheduler
ELD2013-002	Kuniyoshi	mkuniyos@mpifr-bonn.mpg.de	+49 228 525 505	Project Scheduler

Time Usage [hours] for Normal Observations

Experiment Code	station	TBB	HBA	LBH	LBL	interfe	lofarAN	lofarBN	lofarx	lofarsr	fiber	BN--EF_	duty
ELI2013-000	323.00	323.00	323.00	323.00	323.00	323.00					323.00		
ELI2013-000	83.00	83.00	83.00	83.00	83.00	83.00					83.00		
ELI2013-000	120.00	120.00	120.00	120.00	120.00	120.00					120.00		
ELI2013-000	120.00	120.00	120.00	120.00	120.00	120.00					120.00		
ELM2013-012	4.00	4.00	4.00	4.00	4.00	4.00	2.00	2.00	4.00	2.00	4.00	2.00	
ELM2013-012	1.00	1.00	1.00	1.00	1.00	1.00	1.00	1.00	1.00	1.00	1.00	1.00	1.00
ELM2013-012	1.00	1.00	1.00	1.00	1.00	1.00			1.00		1.00		
ELM2013-012	1.00	1.00	1.00	1.00	1.00	1.00	1.00	1.00	1.00	1.00	1.00	1.00	1.00
ELM2013-012	1.00	1.00	1.00	1.00	1.00	1.00			1.00		1.00		
ELP2012-022	25.00		25.00					25.00	25.00				
ELP2012-022 P	25.00		25.00					25.00	25.00				

Time Usage [hours] for Other Actions

Experiment Code	station	TBB	HBA	LBH	LBL	interfe	lofarAN	lofarBN	lofarx	lofarsr	fiber BN--EF_	duty
-----------------	---------	-----	-----	-----	-----	---------	---------	---------	--------	---------	---------------	------

