

Observing Plan for Station Control (LCU)

MPIfR Effelsberg LOFAR Station

2013-02-01 through 2013-02-15

For any publication based on observations with the Effelsberg LOFAR station, please use the following acknowledgment: "Based on observations made with the Effelsberg LOFAR station of the Max-Planck-Institut für Radioastronomie (MPIfR) at Effelsberg."

Date	CET																								Code Markers	
	0	1	2	3	4	5	6	7	8	9	10	11	12	13	14	15	16	17	18	19	20	21	22	23		0
2013-02-01 Fr											ELI2013-000X ILT Operations															
2013-02-02 Sa											ELI2013-000X ILT Operations															
2013-02-03 Su											ELI2013-000X ILT Operations															
2013-02-04 Mo	ELI2013-000X ILT Operations										*0		ELP2012-022E Verbiest													
2013-02-05 Tu	ELP2012-022E Verbiest												ELI2013-007 Koehler et al.													
2013-02-06 We	ELI2013-007 Koehler et al.										*0		ELI2013-000 ILT Operations													
2013-02-07 Th											ELI2013-000 ILT Operations															
2013-02-08 Fr											ELI2013-000 ILT Operations															
2013-02-09 Sa											ELI2013-000 ILT Operations															
2013-02-10 Su											ELI2013-000 ILT Operations															
2013-02-11 Mo	ELI2013-000 ILT Operations										*0															
2013-02-12 Tu																										
2013-02-13 We											*0		ELI2013-000 ILT Operations													
2013-02-14 Th											ELI2013-000 ILT Operations															
2013-02-15 Fr											ELI2013-000 ILT Operations															
UTC	23	0	1	2	3	4	5	6	7	8	9	10	11	12	13	14	15	16	17	18	19	20	21	22	23	
LST	12										Sunrise 18		0						Sunset 6							

Normal Experiment Code Markers

0 ELM2013-012 Kuniyoshi, Horneff

Other Code Markers

Color Meanings

Science A (Astrometry)	Science N (AGN)	Test Observation	Juelich Mode
Science C (Cosmology)	Science O (Other)	Maintenance Mode	Piggyback Control
Science E (Extragalactic)	Science P (Pulsar)	ILT Mode	Piggyback Without Control
Science G (Galactic)	Science R (Cosmic Rays)	Effelsberg Mode	Experiment Warning
Science H (Ionosphere)	Science S (Solar System)	GLOW Mode	Override Possible

Observing Plan for Transient Buffer Boards MPIfR Effelsberg LOFAR Station 2013-02-01 through 2013-02-15

For any publication based on observations with the Effelsberg LOFAR station, please use the following acknowledgment: "Based on observations made with the Effelsberg LOFAR station of the Max-Planck-Institut für Radioastronomie (MPIfR) at Effelsberg."

Date	CET																								Code Markers			
	0	1	2	3	4	5	6	7	8	9	10	11	12	13	14	15	16	17	18	19	20	21	22	23		0		
2013-02-01 Fr	ELI2013-000X ILT Operations																											
2013-02-02 Sa	ELI2013-000X ILT Operations																											
2013-02-03 Su	ELI2013-000X ILT Operations																											
2013-02-04 Mo	ELI2013-000X ILT Operations										*0																	
2013-02-05 Tu													ELI2013-007 Koehler et al.															
2013-02-06 We	ELI2013-007 Koehler et al.										*0	ELI2013-000 ILT Operations																
2013-02-07 Th											ELI2013-000 ILT Operations																	
2013-02-08 Fr											ELI2013-000 ILT Operations																	
2013-02-09 Sa											ELI2013-000 ILT Operations																	
2013-02-10 Su											ELI2013-000 ILT Operations																	
2013-02-11 Mo	ELI2013-000 ILT Operations										*0																	
2013-02-12 Tu																												
2013-02-13 We									*0	ELI2013-000 ILT Operations																		
2013-02-14 Th											ELI2013-000 ILT Operations																	
2013-02-15 Fr											ELI2013-000 ILT Operations																	
UTC	23	0	1	2	3	4	5	6	7	8	9	10	11	12	13	14	15	16	17	18	19	20	21	22	23			
LST	12												Sunrise 18		0						Sunset						6	

Normal Experiment Code Markers

0 ELM2013-012 Kuniyoshi, Horneff

Other Code Markers

Color Meanings

Science A (Astrometry)	Science N (AGN)	Test Observation	Juelich Mode
Science C (Cosmology)	Science O (Other)	Maintenance Mode	Piggyback Control
Science E (Extragalactic)	Science P (Pulsar)	ILT Mode	Piggyback Without Control
Science G (Galactic)	Science R (Cosmic Rays)	Effelsberg Mode	Experiment Warning
Science H (Ionosphere)	Science S (Solar System)	GLOW Mode	Override Possible

Observing Plan for HBA MPIfR Effelsberg LOFAR Station 2013-02-01 through 2013-02-15

For any publication based on observations with the Effelsberg LOFAR station, please use the following acknowledgment: "Based on observations made with the Effelsberg LOFAR station of the Max-Planck-Institut für Radioastronomie (MPIfR) at Effelsberg."

Date	CET																								Code Markers	
	0	1	2	3	4	5	6	7	8	9	10	11	12	13	14	15	16	17	18	19	20	21	22	23		0
2013-02-01 Fr											ELI2013-000X ILT Operations															
2013-02-02 Sa											ELI2013-000X ILT Operations															
2013-02-03 Su											ELI2013-000X ILT Operations															
2013-02-04 Mo	ELI2013-000X ILT Operations										*0	ELP2012-022E Verbiest														
2013-02-05 Tu	ELP2012-022E Verbiest														ELI2013-007 Koehler et al.											
2013-02-06 We	ELI2013-007 Koehler et al.											*0	ELI2013-000 ILT Operations													
2013-02-07 Th											ELI2013-000 ILT Operations															
2013-02-08 Fr											ELI2013-000 ILT Operations															
2013-02-09 Sa											ELI2013-000 ILT Operations															
2013-02-10 Su											ELI2013-000 ILT Operations															
2013-02-11 Mo	ELI2013-000 ILT Operations										*0															
2013-02-12 Tu																										
2013-02-13 We											*0	ELI2013-000 ILT Operations														
2013-02-14 Th											ELI2013-000 ILT Operations															
2013-02-15 Fr											ELI2013-000 ILT Operations															
UTC	23	0	1	2	3	4	5	6	7	8	9	10	11	12	13	14	15	16	17	18	19	20	21	22	23	
LST	12										Sunrise 18		0						Sunset 6							

Normal Experiment Code Markers

0 ELM2013-012 Kuniyoshi, Horneff

Other Code Markers

Color Meanings

Science A (Astrometry)	Science N (AGN)	Test Observation	Juelich Mode
Science C (Cosmology)	Science O (Other)	Maintenance Mode	Piggyback Control
Science E (Extragalactic)	Science P (Pulsar)	ILT Mode	Piggyback Without Control
Science G (Galactic)	Science R (Cosmic Rays)	Effelsberg Mode	Experiment Warning
Science H (Ionosphere)	Science S (Solar System)	GLOW Mode	Override Possible

Observing Plan for Low Band High (LBA) MPIfR Effelsberg LOFAR Station 2013-02-01 through 2013-02-15

For any publication based on observations with the Effelsberg LOFAR station, please use the following acknowledgment: "Based on observations made with the Effelsberg LOFAR station of the Max-Planck-Institut für Radioastronomie (MPIfR) at Effelsberg."

Date	CET																								Code Markers		
	0	1	2	3	4	5	6	7	8	9	10	11	12	13	14	15	16	17	18	19	20	21	22	23		0	
2013-02-01 Fr	ELI2013-000X ILT Operations																										
2013-02-02 Sa	ELI2013-000X ILT Operations																										
2013-02-03 Su	ELI2013-000X ILT Operations																										
2013-02-04 Mo	ELI2013-000X ILT Operations										*0																
2013-02-05 Tu																											
2013-02-06 We	ELI2013-007 Koehler et al.																										
2013-02-07 Th	ELI2013-000 ILT Operations																										
2013-02-08 Fr	ELI2013-000 ILT Operations																										
2013-02-09 Sa	ELI2013-000 ILT Operations																										
2013-02-10 Su	ELI2013-000 ILT Operations																										
2013-02-11 Mo	ELI2013-000 ILT Operations										*0																
2013-02-12 Tu																											
2013-02-13 We											*0																
2013-02-14 Th	ELI2013-000 ILT Operations																										
2013-02-15 Fr	ELI2013-000 ILT Operations																										

UTC
LST

23 0 1 2 3 4 5 6 7 8 9 10 11 12 13 14 15 16 17 18 19 20 21 22 23

12

Sunrise 18

0

Sunset 6

Normal Experiment Code Markers

0 ELM2013-012 Kuniyoshi, Horneff

Other Code Markers

Color Meanings

Science A (Astrometry)	Science N (AGN)	Test Observation	Juelich Mode
Science C (Cosmology)	Science O (Other)	Maintenance Mode	Piggyback Control
Science E (Extragalactic)	Science P (Pulsar)	ILT Mode	Piggyback Without Control
Science G (Galactic)	Science R (Cosmic Rays)	Effelsberg Mode	Experiment Warning
Science H (Ionosphere)	Science S (Solar System)	GLOW Mode	Override Possible

Observing Plan for Low Band Low, Unused Inputs

MPIfR Effelsberg LOFAR Station

2013-02-01 through 2013-02-15

For any publication based on observations with the Effelsberg LOFAR station, please use the following acknowledgment: "Based on observations made with the Effelsberg LOFAR station of the Max-Planck-Institut für Radioastronomie (MPIfR) at Effelsberg."

Date	CET																								Code Markers	
	0	1	2	3	4	5	6	7	8	9	10	11	12	13	14	15	16	17	18	19	20	21	22	23		0
2013-02-01 Fr	ELI2013-000X ILT Operations																									
2013-02-02 Sa	ELI2013-000X ILT Operations																									
2013-02-03 Su	ELI2013-000X ILT Operations																									
2013-02-04 Mo	ELI2013-000X ILT Operations									*0																
2013-02-05 Tu																										
2013-02-06 We													*0	ELI2013-000 ILT Operations												
2013-02-07 Th	ELI2013-000 ILT Operations																									
2013-02-08 Fr	ELI2013-000 ILT Operations																									
2013-02-09 Sa	ELI2013-000 ILT Operations																									
2013-02-10 Su	ELI2013-000 ILT Operations																									
2013-02-11 Mo	ELI2013-000 ILT Operations									*0																
2013-02-12 Tu																										
2013-02-13 We									*0	ELI2013-000 ILT Operations																
2013-02-14 Th	ELI2013-000 ILT Operations																									
2013-02-15 Fr	ELI2013-000 ILT Operations																									
UTC	23	0	1	2	3	4	5	6	7	8	9	10	11	12	13	14	15	16	17	18	19	20	21	22	23	
LST																										
				12					Sunrise	18						0			Sunset			6				

Normal Experiment Code Markers

0 ELM2013-012 Kuniyoshi, Horneff

Other Code Markers

Color Meanings

Science A (Astrometry)	Science N (AGN)	Test Observation	Juelich Mode
Science C (Cosmology)	Science O (Other)	Maintenance Mode	Piggyback Control
Science E (Extragalactic)	Science P (Pulsar)	ILT Mode	Piggyback Without Control
Science G (Galactic)	Science R (Cosmic Rays)	Effelsberg Mode	Experiment Warning
Science H (Ionosphere)	Science S (Solar System)	GLOW Mode	Override Possible

Observing Plan for Station Interferometer MPIfR Effelsberg LOFAR Station 2013-02-01 through 2013-02-15

For any publication based on observations with the Effelsberg LOFAR station, please use the following acknowledgment: "Based on observations made with the Effelsberg LOFAR station of the Max-Planck-Institut für Radioastronomie (MPIfR) at Effelsberg."

Date	CET																								Code Markers					
	0	1	2	3	4	5	6	7	8	9	10	11	12	13	14	15	16	17	18	19	20	21	22	23		0				
2013-02-01 Fr	ELI2013-000X ILT Operations																													
2013-02-02 Sa	ELI2013-000X ILT Operations																													
2013-02-03 Su	ELI2013-000X ILT Operations																													
2013-02-04 Mo	ELI2013-000X ILT Operations									*0																				
2013-02-05 Tu																														
2013-02-06 We													*0	ELI2013-000 ILT Operations																
2013-02-07 Th	ELI2013-000 ILT Operations																													
2013-02-08 Fr	ELI2013-000 ILT Operations																													
2013-02-09 Sa	ELI2013-000 ILT Operations																													
2013-02-10 Su	ELI2013-000 ILT Operations																													
2013-02-11 Mo	ELI2013-000 ILT Operations									*0																				
2013-02-12 Tu																														
2013-02-13 We									*0	ELI2013-000 ILT Operations																				
2013-02-14 Th	ELI2013-000 ILT Operations																													
2013-02-15 Fr	ELI2013-000 ILT Operations																													
UTC	23	0	1	2	3	4	5	6	7	8	9	10	11	12	13	14	15	16	17	18	19	20	21	22	23					
LST																														
				12						Sunrise	18								0						Sunset	6				

Normal Experiment Code Markers

0 ELM2013-012 Kuniyoshi, Horneff

Other Code Markers

Color Meanings

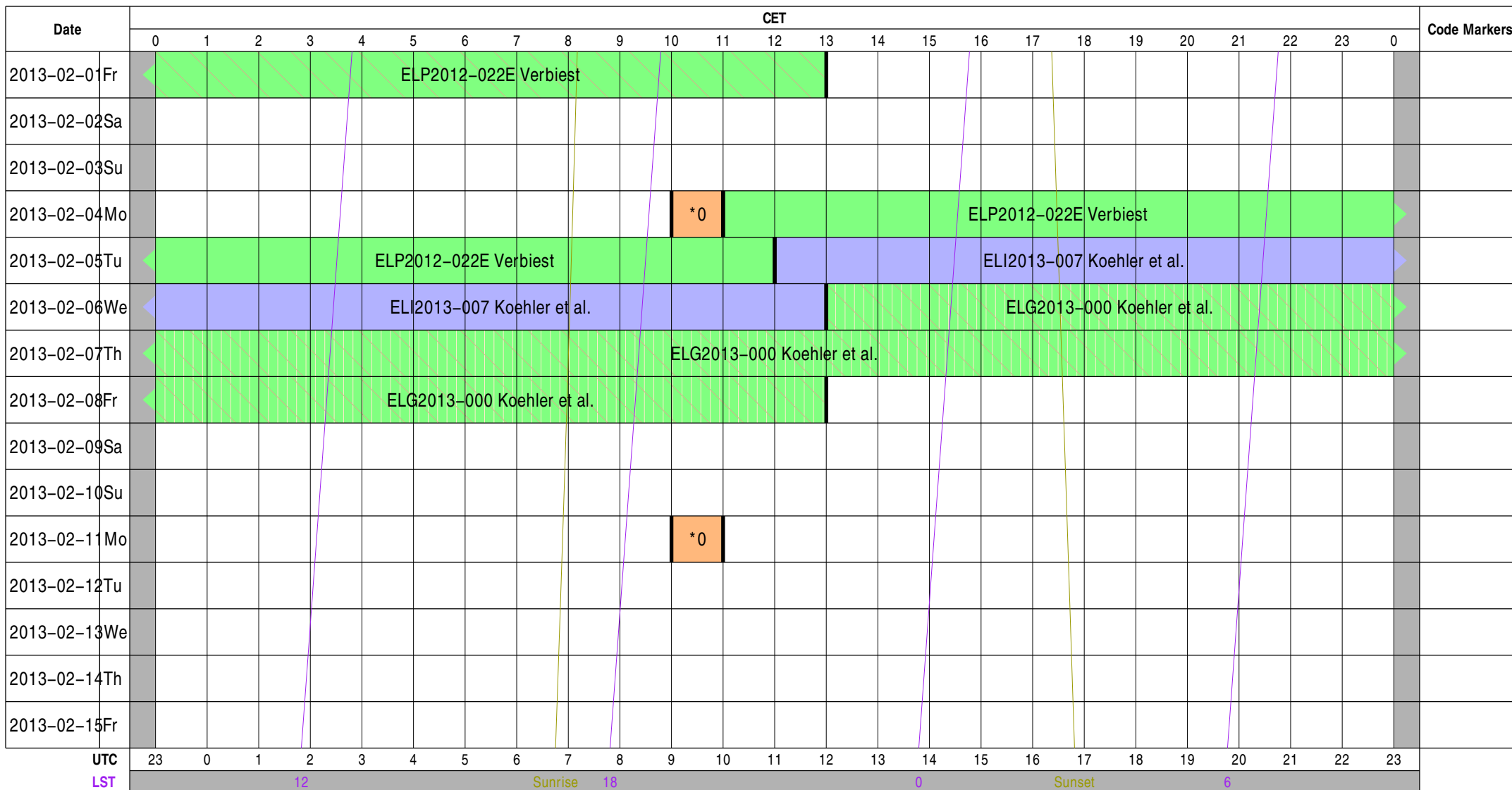
Science A (Astrometry)	Science N (AGN)	Test Observation	Juelich Mode
Science C (Cosmology)	Science O (Other)	Maintenance Mode	Piggyback Control
Science E (Extragalactic)	Science P (Pulsar)	ILT Mode	Piggyback Without Control
Science G (Galactic)	Science R (Cosmic Rays)	Effelsberg Mode	Experiment Warning
Science H (Ionosphere)	Science S (Solar System)	GLOW Mode	Override Possible

Observing Plan for IofarAN Computers

MPIfR Effelsberg LOFAR Station

2013-02-01 through 2013-02-15

For any publication based on observations with the Effelsberg LOFAR station, please use the following acknowledgment: "Based on observations made with the Effelsberg LOFAR station of the Max-Planck-Institut für Radioastronomie (MPIfR) at Effelsberg."



Normal Experiment Code Markers

0 ELM2013-012 Kuniyoshi, Horneff

Other Code Markers

Color Meanings

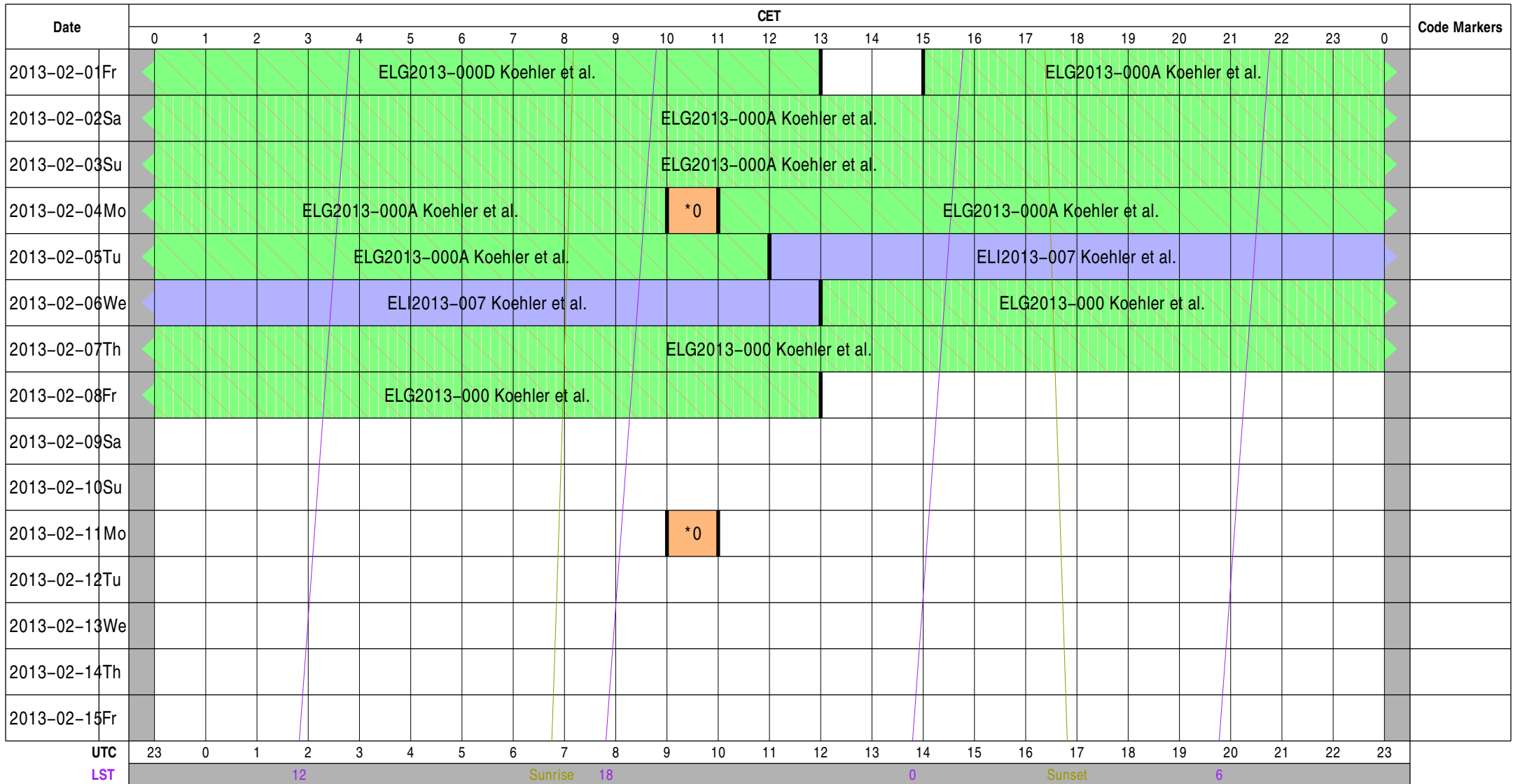
Science A (Astrometry)	Science N (AGN)	Test Observation	Juelich Mode
Science C (Cosmology)	Science O (Other)	Maintenance Mode	Piggyback Control
Science E (Extragalactic)	Science P (Pulsar)	ILT Mode	Piggyback Without Control
Science G (Galactic)	Science R (Cosmic Rays)	Effelsberg Mode	Experiment Warning
Science H (Ionosphere)	Science S (Solar System)	GLOW Mode	Override Possible

Observing Plan for IofarBN Computers

MPIfR Effelsberg LOFAR Station

2013-02-01 through 2013-02-15

For any publication based on observations with the Effelsberg LOFAR station, please use the following acknowledgment: "Based on observations made with the Effelsberg LOFAR station of the Max-Planck-Institut für Radioastronomie (MPIfR) at Effelsberg."



Normal Experiment Code Markers

0 ELM2013-012 Kuniyoshi, Horneff

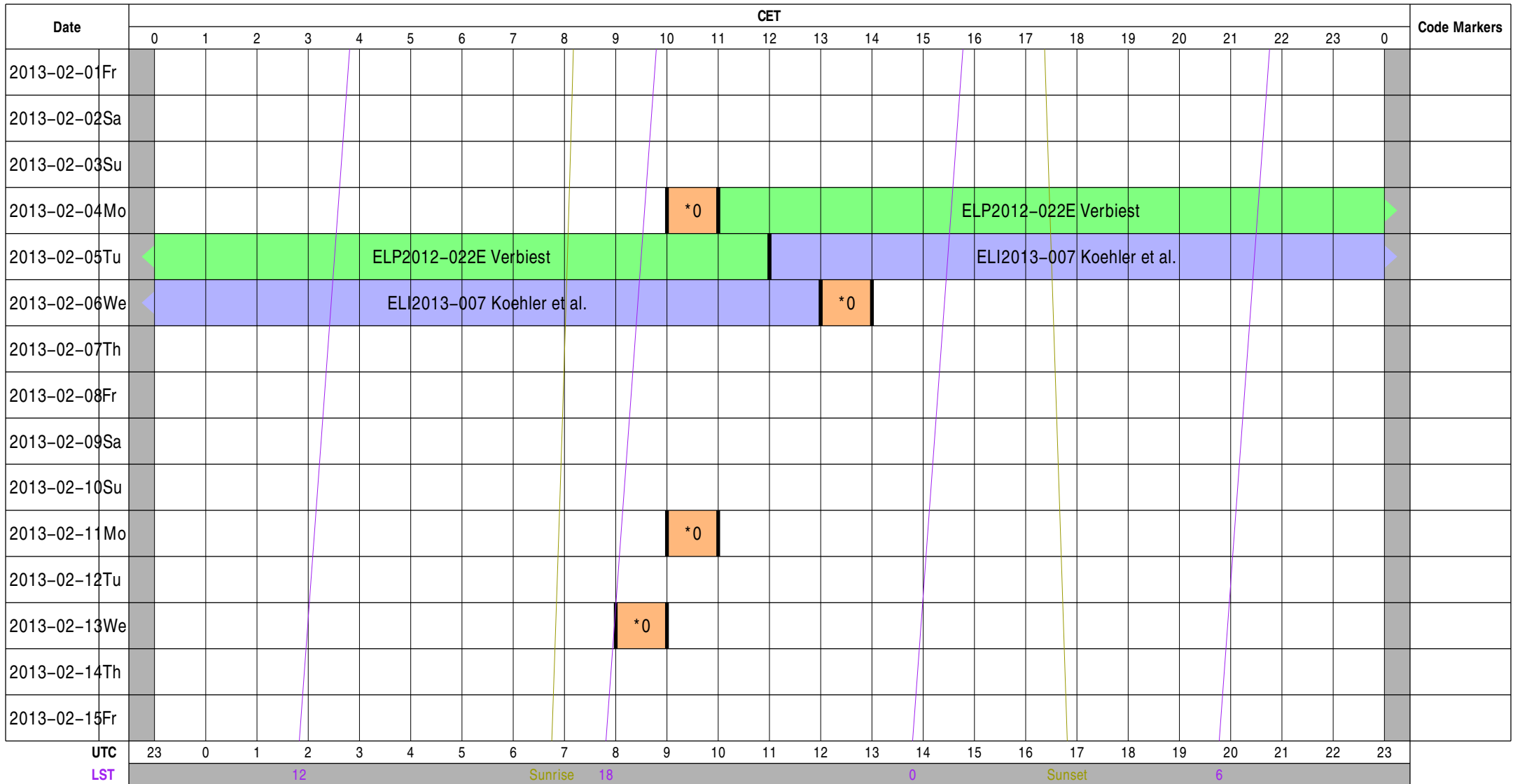
Other Code Markers

Color Meanings

Science A (Astrometry)	Science N (AGN)	Test Observation	Juelich Mode
Science C (Cosmology)	Science O (Other)	Maintenance Mode	Piggyback Control
Science E (Extragalactic)	Science P (Pulsar)	ILT Mode	Piggyback Without Control
Science G (Galactic)	Science R (Cosmic Rays)	Effelsberg Mode	Experiment Warning
Science H (Ionosphere)	Science S (Solar System)	GLOW Mode	Override Possible

Observing Plan for lofarx Computer MPIfR Effelsberg LOFAR Station 2013-02-01 through 2013-02-15

For any publication based on observations with the Effelsberg LOFAR station, please use the following acknowledgment: "Based on observations made with the Effelsberg LOFAR station of the Max-Planck-Institut für Radioastronomie (MPIfR) at Effelsberg."



Normal Experiment Code Markers

0 ELM2013-012 Kuniyoshi, Horneff

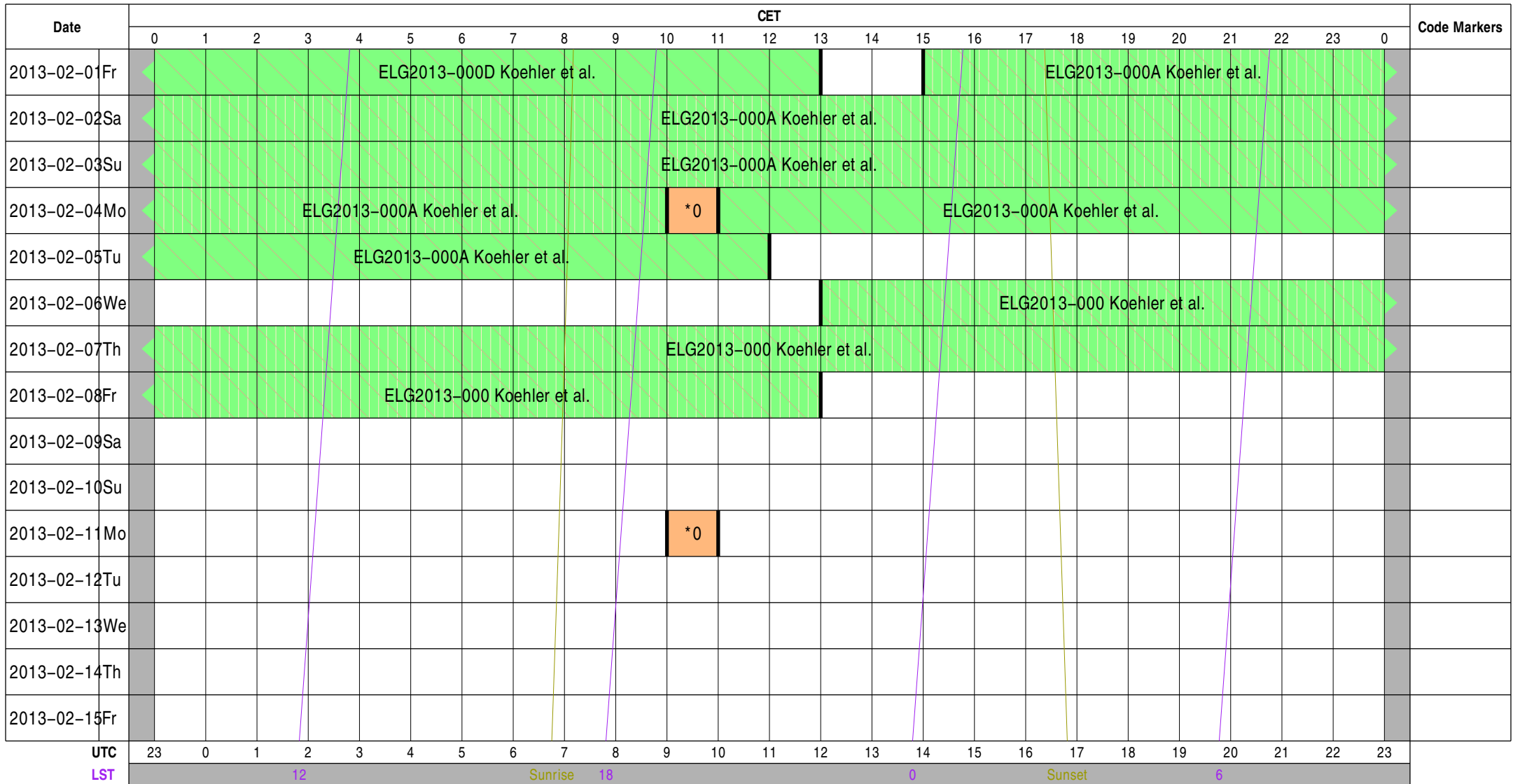
Other Code Markers

Color Meanings

Science A (Astrometry)	Science N (AGN)	Test Observation	Juelich Mode
Science C (Cosmology)	Science O (Other)	Maintenance Mode	Piggyback Control
Science E (Extragalactic)	Science P (Pulsar)	ILT Mode	Piggyback Without Control
Science G (Galactic)	Science R (Cosmic Rays)	Effelsberg Mode	Experiment Warning
Science H (Ionosphere)	Science S (Solar System)	GLOW Mode	Override Possible

Observing Plan for Iofarsrv Computer MPIfR Effelsberg LOFAR Station 2013-02-01 through 2013-02-15

For any publication based on observations with the Effelsberg LOFAR station, please use the following acknowledgment: "Based on observations made with the Effelsberg LOFAR station of the Max-Planck-Institut für Radioastronomie (MPIfR) at Effelsberg."



Normal Experiment Code Markers

0 ELM2013-012 Kuniyoshi, Horneff

Other Code Markers

Color Meanings

Science A (Astrometry)	Science N (AGN)	Test Observation	Juelich Mode
Science C (Cosmology)	Science O (Other)	Maintenance Mode	Piggyback Control
Science E (Extragalactic)	Science P (Pulsar)	ILT Mode	Piggyback Without Control
Science G (Galactic)	Science R (Cosmic Rays)	Effelsberg Mode	Experiment Warning
Science H (Ionosphere)	Science S (Solar System)	GLOW Mode	Override Possible

Observing Plan for LOFAR Fiber Connection MPIfR Effelsberg LOFAR Station 2013-02-01 through 2013-02-15

For any publication based on observations with the Effelsberg LOFAR station, please use the following acknowledgment: "Based on observations made with the Effelsberg LOFAR station of the Max-Planck-Institut für Radioastronomie (MPIfR) at Effelsberg."

Date	CET																								Code Markers	
	0	1	2	3	4	5	6	7	8	9	10	11	12	13	14	15	16	17	18	19	20	21	22	23		0
2013-02-01 Fr	ELI2013-000X ILT Operations																									
2013-02-02 Sa	ELI2013-000X ILT Operations																									
2013-02-03 Su	ELI2013-000X ILT Operations																									
2013-02-04 Mo	ELI2013-000X ILT Operations							*0																	1	
2013-02-05 Tu																										
2013-02-06 We													*0		ELI2013-000 ILT Operations											
2013-02-07 Th	ELI2013-000 ILT Operations																									
2013-02-08 Fr	ELI2013-000 ILT Operations																									
2013-02-09 Sa	ELI2013-000 ILT Operations																									
2013-02-10 Su	ELI2013-000 ILT Operations																									
2013-02-11 Mo	ELI2013-000 ILT Operations							*0																		
2013-02-12 Tu																										
2013-02-13 We								*0		ELI2013-000 ILT Operations																
2013-02-14 Th	ELI2013-000 ILT Operations																									
2013-02-15 Fr	ELI2013-000 ILT Operations																									
UTC	23	0	1	2	3	4	5	6	7	8	9	10	11	12	13	14	15	16	17	18	19	20	21	22	23	
LST																										
	12				Sunrise				18				0				Sunset				6					

Normal Experiment Code Markers

0 ELM2013-012 Kuniyoshi, Horneff

Other Code Markers

1 ELM2013-014 Anderson, Horneff

Color Meanings

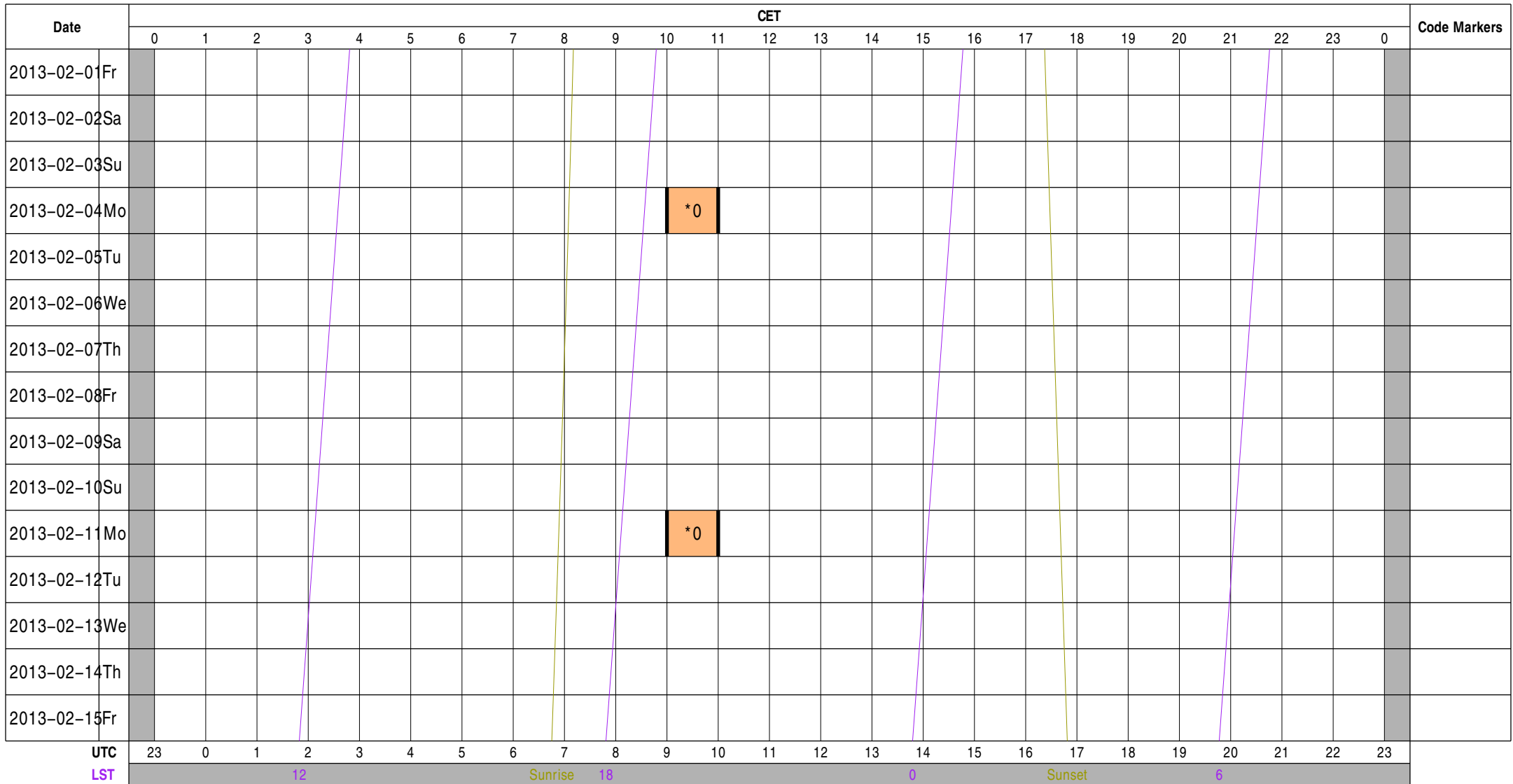
Science A (Astrometry)	Science N (AGN)	Test Observation	Juelich Mode
Science C (Cosmology)	Science O (Other)	Maintenance Mode	Piggyback Control
Science E (Extragalactic)	Science P (Pulsar)	ILT Mode	Piggyback Without Control
Science G (Galactic)	Science R (Cosmic Rays)	Effelsberg Mode	Experiment Warning
Science H (Ionosphere)	Science S (Solar System)	GLOW Mode	Override Possible

Observing Plan for LOFAR Bonn--EF Fiber Connection

MPIfR Effelsberg LOFAR Station

2013-02-01 through 2013-02-15

For any publication based on observations with the Effelsberg LOFAR station, please use the following acknowledgment: "Based on observations made with the Effelsberg LOFAR station of the Max-Planck-Institut für Radioastronomie (MPIfR) at Effelsberg."



Normal Experiment Code Markers

0 ELM2013-012 Kuniyoshi, Horneff

Other Code Markers

Color Meanings

Science A (Astrometry)	Science N (AGN)	Test Observation	Juelich Mode
Science C (Cosmology)	Science O (Other)	Maintenance Mode	Piggyback Control
Science E (Extragalactic)	Science P (Pulsar)	ILT Mode	Piggyback Without Control
Science G (Galactic)	Science R (Cosmic Rays)	Effelsberg Mode	Experiment Warning
Science H (Ionosphere)	Science S (Solar System)	GLOW Mode	Override Possible

Observing Plan for Operator On-Duty

MPIfR Effelsberg LOFAR Station

2013-02-01 through 2013-02-15

For any publication based on observations with the Effelsberg LOFAR station, please use the following acknowledgment: "Based on observations made with the Effelsberg LOFAR station of the Max-Planck-Institut für Radioastronomie (MPIfR) at Effelsberg."

Date	CET																								Code Markers		
	0	1	2	3	4	5	6	7	8	9	10	11	12	13	14	15	16	17	18	19	20	21	22	23		0	
2013-02-01	Fr																										
2013-02-02	Sa																										
2013-02-03	Su																										
2013-02-04	Mo																										
2013-02-05	Tu																										
2013-02-06	We																										
2013-02-07	Th																										
2013-02-08	Fr																										
2013-02-09	Sa																										
2013-02-10	Su																										
2013-02-11	Mo																										
2013-02-12	Tu																										
2013-02-13	We																										
2013-02-14	Th																										
2013-02-15	Fr																										

UTC

LST

23 0 1 2 3 4 5 6 7 8 9 10 11 12 13 14 15 16 17 18 19 20 21 22 23

12

Sunrise

18

0

Sunset

6

Normal Experiment Code Markers

Other Code Markers

Color Meanings

- 100 m Operator
- Anderson
- Kuniyoshi
- Horneffer
- Other
- Unknown

Experiment Information for Normal Observations

ELG2013-000	Koehler et al.	jana@mpifr-bonn.mpg.de	+49 228 525 533	LC0_044 Studying large-scale polarization properties of the
ELG2013-000	Koehler et al.	jana@mpifr-bonn.mpg.de	+49 228 525 533	LC0_044 Studying large-scale polarization properties of the
ELG2013-000	Koehler et al.	jana@mpifr-bonn.mpg.de	+49 228 525 533	LC0_044 Studying large-scale polarization properties of the
ELG2013-000	Koehler et al.	jana@mpifr-bonn.mpg.de	+49 228 525 533	LC0_044 Studying large-scale polarization properties of the
ELI2013-000	ILT Operations	observer@astron.nl	+31 521 595 777	Main ILT Observations, ILT Operations only on-duty 9--17, M
ELI2013-000	ILT Operations	observer@astron.nl	+31 521 595 777	Main ILT Observations, ILT Operations only on-duty 9--17, M
ELI2013-000	ILT Operations	observer@astron.nl	+31 521 595 777	Main ILT Observations, ILT Operations only on-duty 9--17, M
ELI2013-007	Koehler et al.	jana@mpifr-bonn.mpg.de	+49 228 525 533	LC0_044 Studying large-scale polarization properties of the
ELI2013-007	Koehler et al.	jana@mpifr-bonn.mpg.de	+49 228 525 533	LC0_044 Studying large-scale polarization properties of the
ELM2013-012	Kuniyoshi, Horneffer, Anderson	lofar-ops@mpifr-bonn.mpg.de	+49 228 525 356	Handover operations for local to ILT mode (MPIFR time)
ELM2013-012	Kuniyoshi, Horneffer, Anderson	lofar-ops@mpifr-bonn.mpg.de	+49 228 525 356	Handover operations for local to ILT mode (MPIFR time)
ELM2013-012	Kuniyoshi, Horneffer, Anderson	lofar-ops@mpifr-bonn.mpg.de	+49 228 525 356	Handover operations for local to ILT mode (MPIFR time)
ELM2013-012	Kuniyoshi, Horneffer, Anderson	lofar-ops@mpifr-bonn.mpg.de	+49 228 525 356	Handover operations for local to ILT mode (MPIFR time)
ELP2012-022	Verbiest	verbiest@mpifr-bonn.mpg.de	+49 228 525 246	Assessing the Timing Potential of LOFAR for Pulsars
ELP2012-022	Verbiest	verbiest@mpifr-bonn.mpg.de	+49 228 525 246	Assessing the Timing Potential of LOFAR for Pulsars
ELP2012-022	Verbiest	verbiest@mpifr-bonn.mpg.de	+49 228 525 246	Assessing the Timing Potential of LOFAR for Pulsars

Experiment Information for Other Actions

ELM2013-014	Anderson, Horneffer, Kuniyoshi	lofar-ops@mpi-fr-bonn.mpg.de	+49 228 525 356	DFN network maintenance
ELM2013-014	Anderson, Horneffer, Kuniyoshi	lofar-ops@mpi-fr-bonn.mpg.de	+49 228 525 356	DFN network maintenance

Experiment Information for Operator On-Duty Schedule

ELD2013-002	Kuniyoshi	mkunios@mpifr-bonn.mpg.de	+49 228 525 505	Project Scheduler
ELD2013-002	Kuniyoshi	mkunios@mpifr-bonn.mpg.de	+49 228 525 505	Project Scheduler

Time Usage [hours] for Normal Observations

Experiment Code	station	TBB	HBA	LBH	LBL	interfe	lofarAN	lofarBN	lofarx	lofarsr	fiber	BN--EF_	duty
ELG2013-000							48.00	153.00		153.00			
ELG2013-000							48.00	48.00		48.00			
ELG2013-000 A								67.00		67.00			
ELG2013-000 A								25.00		25.00			
ELG2013-000 D								13.00		13.00			
ELI2013-000	260.00	260.00	260.00	260.00	260.00	260.00							260.00
ELI2013-000	116.00	116.00	116.00	116.00	116.00	116.00							116.00
ELI2013-000	62.00	62.00	62.00	62.00	62.00	62.00							62.00
ELI2013-000 X	82.00	82.00	82.00	82.00	82.00	82.00							82.00
ELI2013-007	25.00	25.00	25.00	25.00			25.00	25.00	25.00				
ELI2013-007	25.00	25.00	25.00	25.00			25.00	25.00	25.00				
ELM2013-012	4.00	4.00	4.00	4.00	4.00	4.00	2.00	2.00	4.00	2.00	4.00	2.00	
ELM2013-012	1.00	1.00	1.00	1.00	1.00	1.00	1.00	1.00	1.00	1.00	1.00	1.00	1.00
ELM2013-012	1.00	1.00	1.00	1.00	1.00	1.00			1.00				1.00
ELM2013-012	1.00	1.00	1.00	1.00	1.00	1.00	1.00	1.00	1.00	1.00	1.00	1.00	1.00
ELM2013-012	1.00	1.00	1.00	1.00	1.00	1.00			1.00				1.00
ELP2012-022	25.00		25.00				38.00		25.00				
ELP2012-022 E							13.00						
ELP2012-022 E	25.00		25.00				25.00		25.00				

Time Usage [hours] for Other Actions

Experiment Code	station	TBB	HBA	LBH	LBL	interfe	lofarAN	lofarBN	lofarx	lofarsr	fiber	BN--EF_	duty
ELM2013-014											2.00		
ELM2013-014											2.00		

