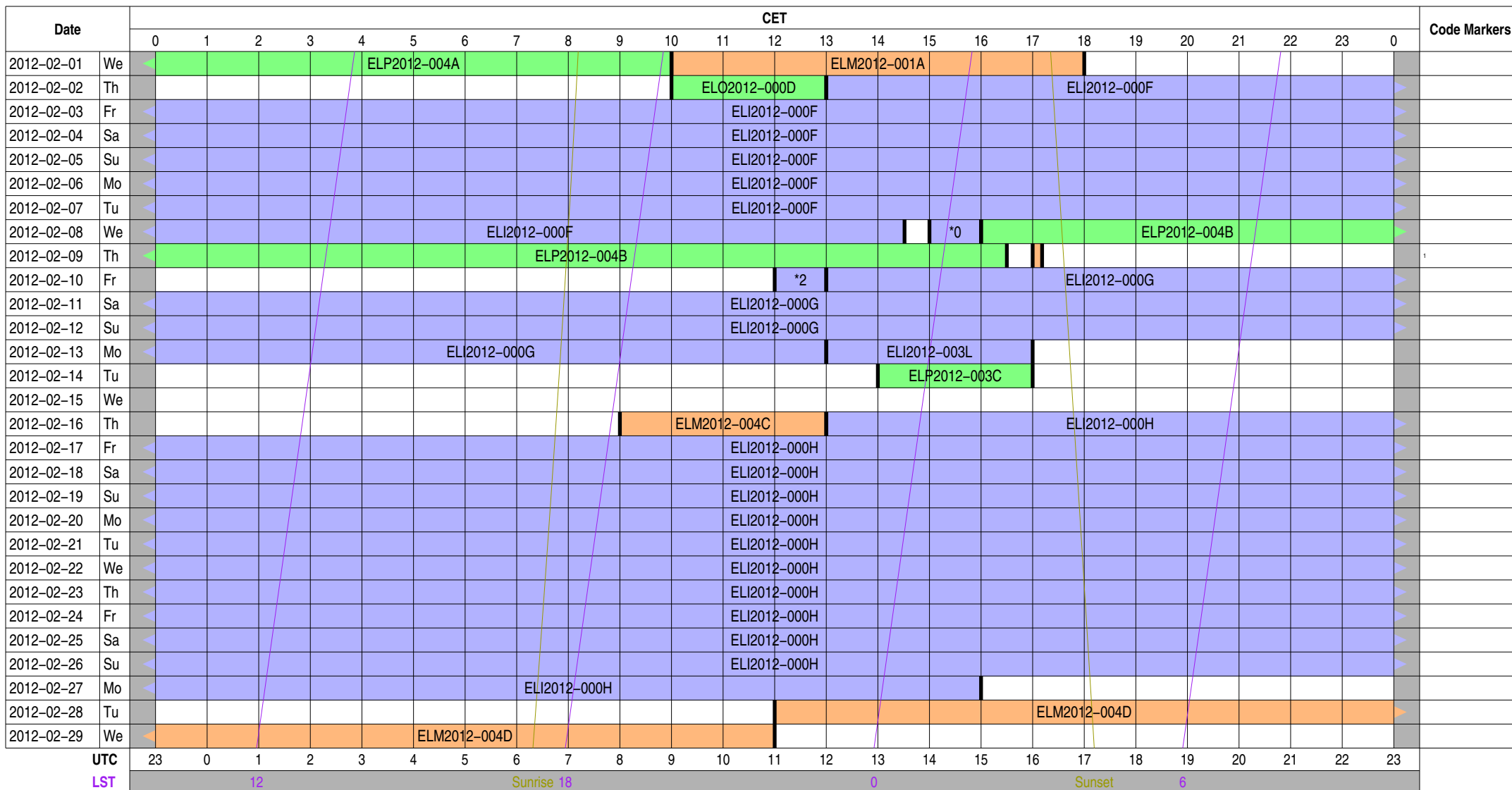


Observing Plan for Station Control (LCU)

MPIfR Effelsberg LOFAR Station

2012-02-01 through 2012-02-29

For any publication based on observations with the Effelsberg LOFAR station, please use the following acknowledgment: "Based on observations made with the Effelsberg LOFAR station of the Max-Planck-Institut für Radioastronomie (MPIfR) at Effelsberg."



Normal Experiment Code Markers

- 0 ELI2012-003J
- 1 ELM2012-001B
- 2 ELI2012-003K

Other Experiment Code Markers

- 0 ELI2012-003J
- 1 ELM2012-001B
- 2 ELI2012-003K

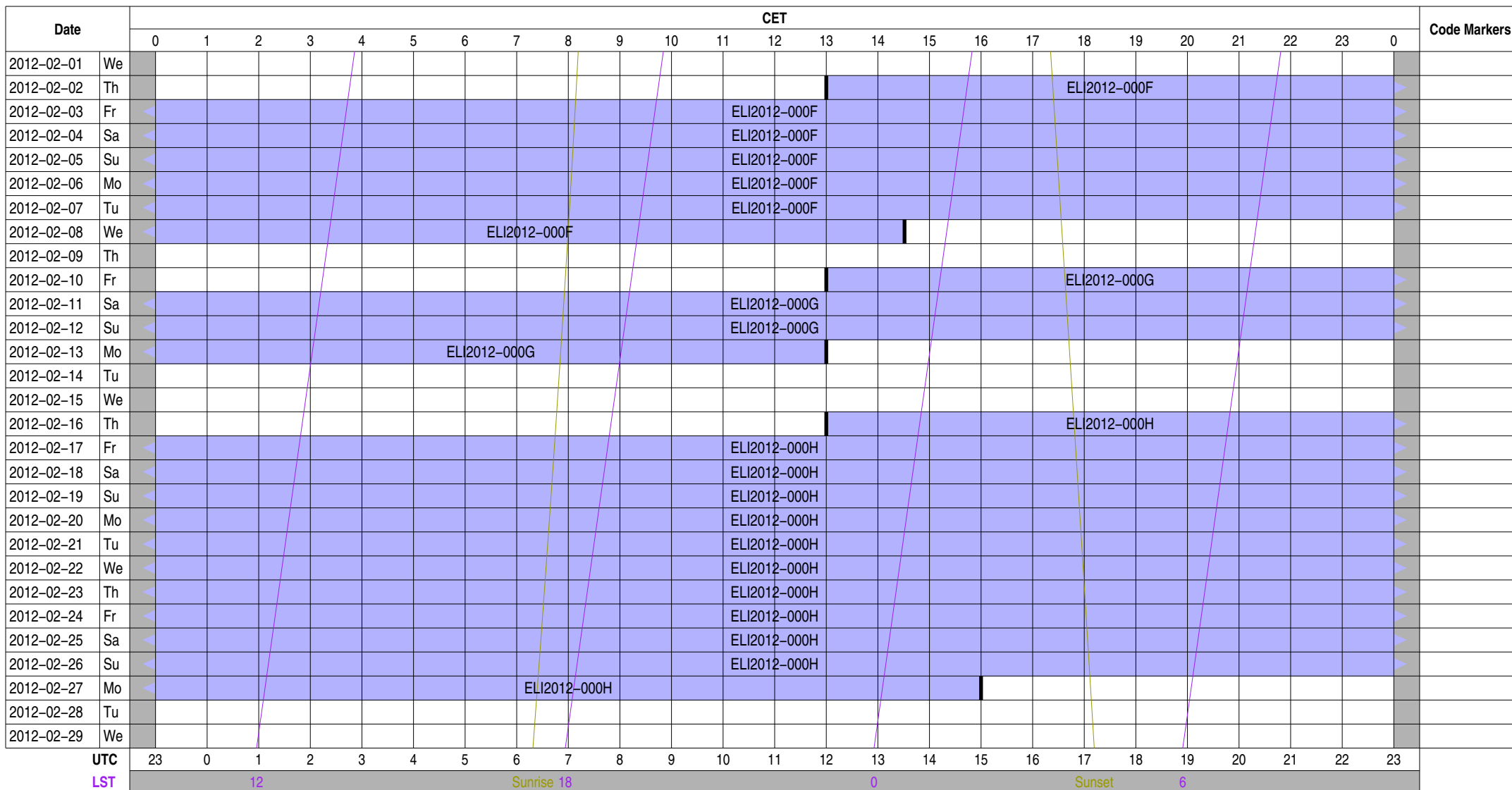
Color Meanings

- | | | | |
|---------------------------|--------------------------|------------------|---------------------------|
| Science A (Astrometry) | Science N (AGN) | Test Observation | Juelich Mode |
| Science C (Cosmology) | Science O (Other) | Maintenance Mode | Piggyback Control |
| Science E (Extragalactic) | Science P (Pulsar) | ILT Mode | Piggyback Without Control |
| Science G (Galactic) | Science R (Cosmic Rays) | Effelsberg Mode | Experiment Warning |
| Science H (Ionosphere) | Science S (Solar System) | GLOW Mode | Override Possible |

Observing Plan for Transient Buffer Boards

MPIfR Effelsberg LOFAR Station

2012-02-01 through 2012-02-29



Normal Experiment Code Markers

Other Experiment Code Markers

Color Meanings

Science A (Astrometry)	Science N (AGN)	Test Observation	Juelich Mode
Science C (Cosmology)	Science O (Other)	Maintenance Mode	Piggyback Control
Science E (Extragalactic)	Science P (Pulsar)	ILT Mode	Piggyback Without Control
Science G (Galactic)	Science R (Cosmic Rays)	Effelsberg Mode	Experiment Warning
Science H (Ionosphere)	Science S (Solar System)	GLOW Mode	Override Possible

Observing Plan for HBA MPIfR Effelsberg LOFAR Station 2012-02-01 through 2012-02-29

For any publication based on observations with the Effelsberg LOFAR station, please use the following acknowledgment: "Based on observations made with the Effelsberg LOFAR station of the Max-Planck-Institut für Radioastronomie (MPIfR) at Effelsberg."

Date	Day	CET																								Code Markers
		0	1	2	3	4	5	6	7	8	9	10	11	12	13	14	15	16	17	18	19	20	21	22	23	
2012-02-01	We	ELP2012-004A				ELM2012-001A						ELI2012-000F														
2012-02-02	Th	ELI2012-000F										ELI2012-000D				ELI2012-000F										
2012-02-03	Fr	ELI2012-000F										ELI2012-000F														
2012-02-04	Sa	ELI2012-000F										ELI2012-000F														
2012-02-05	Su	ELI2012-000F										ELI2012-000F														
2012-02-06	Mo	ELI2012-000F										ELI2012-000F														
2012-02-07	Tu	ELI2012-000F										ELI2012-000F														
2012-02-08	We	ELI2012-000F										*0														
2012-02-09	Th	ELI2012-000G										ELI2012-000G														
2012-02-10	Fr	ELI2012-000G										ELI2012-000G														
2012-02-11	Sa	ELI2012-000G										ELI2012-000G														
2012-02-12	Su	ELI2012-000G										ELI2012-000G														
2012-02-13	Mo	ELI2012-000G										ELI2012-003L				ELI2012-000H										
2012-02-14	Tu	ELI2012-000H										ELP2012-003C				ELI2012-000H										
2012-02-15	We	ELI2012-000H										ELI2012-000H														
2012-02-16	Th	ELI2012-000H										ELI2012-000H														
2012-02-17	Fr	ELI2012-000H										ELI2012-000H														
2012-02-18	Sa	ELI2012-000H										ELI2012-000H														
2012-02-19	Su	ELI2012-000H										ELI2012-000H														
2012-02-20	Mo	ELI2012-000H										ELI2012-000H														
2012-02-21	Tu	ELI2012-000H										ELI2012-000H														
2012-02-22	We	ELI2012-000H										ELI2012-000H														
2012-02-23	Th	ELI2012-000H										ELI2012-000H														
2012-02-24	Fr	ELI2012-000H										ELI2012-000H														
2012-02-25	Sa	ELI2012-000H										ELI2012-000H														
2012-02-26	Su	ELI2012-000H										ELI2012-000H														
2012-02-27	Mo	ELI2012-000H										ELI2012-000H														
2012-02-28	Tu	ELI2012-000H										ELI2012-000H														
2012-02-29	We	ELI2012-000H										ELI2012-000H														

UTC LST Sunrise Sunset

23 0 1 2 3 4 5 6 7 8 9 10 11 12 13 14 15 16 17 18 19 20 21 22 23

12 18 0 6

Normal Experiment Code Markers

0 ELP2012-003J

Other Experiment Code Markers

Color Meanings

Science A (Astrometry)	Science N (AGN)	Test Observation	Juelich Mode
Science C (Cosmology)	Science O (Other)	Maintenance Mode	Piggyback Control
Science E (Extragalactic)	Science P (Pulsar)	ILT Mode	Piggyback Without Control
Science G (Galactic)	Science R (Cosmic Rays)	Effelsberg Mode	Experiment Warning
Science H (Ionosphere)	Science S (Solar System)	GLOW Mode	Override Possible

Observing Plan for Low Band High (LBA) MPIfR Effelsberg LOFAR Station 2012-02-01 through 2012-02-29

For any publication based on observations with the Effelsberg LOFAR station, please use the following acknowledgment: "Based on observations made with the Effelsberg LOFAR station of the Max-Planck-Institut für Radioastronomie (MPIfR) at Effelsberg."

Date	Day	CET																								Code Markers						
		0	1	2	3	4	5	6	7	8	9	10	11	12	13	14	15	16	17	18	19	20	21	22	23		0					
2012-02-01	We	ELP2012-004A				ELM2012-001A																										
2012-02-02	Th	ELO2012-000D										ELI2012-000F																				
2012-02-03	Fr	ELI2012-000F																														
2012-02-04	Sa	ELI2012-000F																														
2012-02-05	Su	ELI2012-000F																														
2012-02-06	Mo	ELI2012-000F																														
2012-02-07	Tu	ELI2012-000F																														
2012-02-08	We	ELI2012-000F																														
2012-02-09	Th	ELI2012-000F																														
2012-02-10	Fr	ELI2012-000G																														
2012-02-11	Sa	ELI2012-000G																														
2012-02-12	Su	ELI2012-000G																														
2012-02-13	Mo	ELI2012-000G																														
2012-02-14	Tu	ELP2012-003C																														
2012-02-15	We	ELI2012-000H																														
2012-02-16	Th	ELI2012-000H																														
2012-02-17	Fr	ELI2012-000H																														
2012-02-18	Sa	ELI2012-000H																														
2012-02-19	Su	ELI2012-000H																														
2012-02-20	Mo	ELI2012-000H																														
2012-02-21	Tu	ELI2012-000H																														
2012-02-22	We	ELI2012-000H																														
2012-02-23	Th	ELI2012-000H																														
2012-02-24	Fr	ELI2012-000H																														
2012-02-25	Sa	ELI2012-000H																														
2012-02-26	Su	ELI2012-000H																														
2012-02-27	Mo	ELI2012-000H																														
2012-02-28	Tu	ELI2012-000H																														
2012-02-29	We	ELI2012-000H																														
UTC		23	0	1	2	3	4	5	6	7	8	9	10	11	12	13	14	15	16	17	18	19	20	21	22	23						
LST				12						Sunrise	18					0				Sunset		6										

Normal Experiment Code Markers

0 ELP2012-003J

Other Experiment Code Markers

Color Meanings

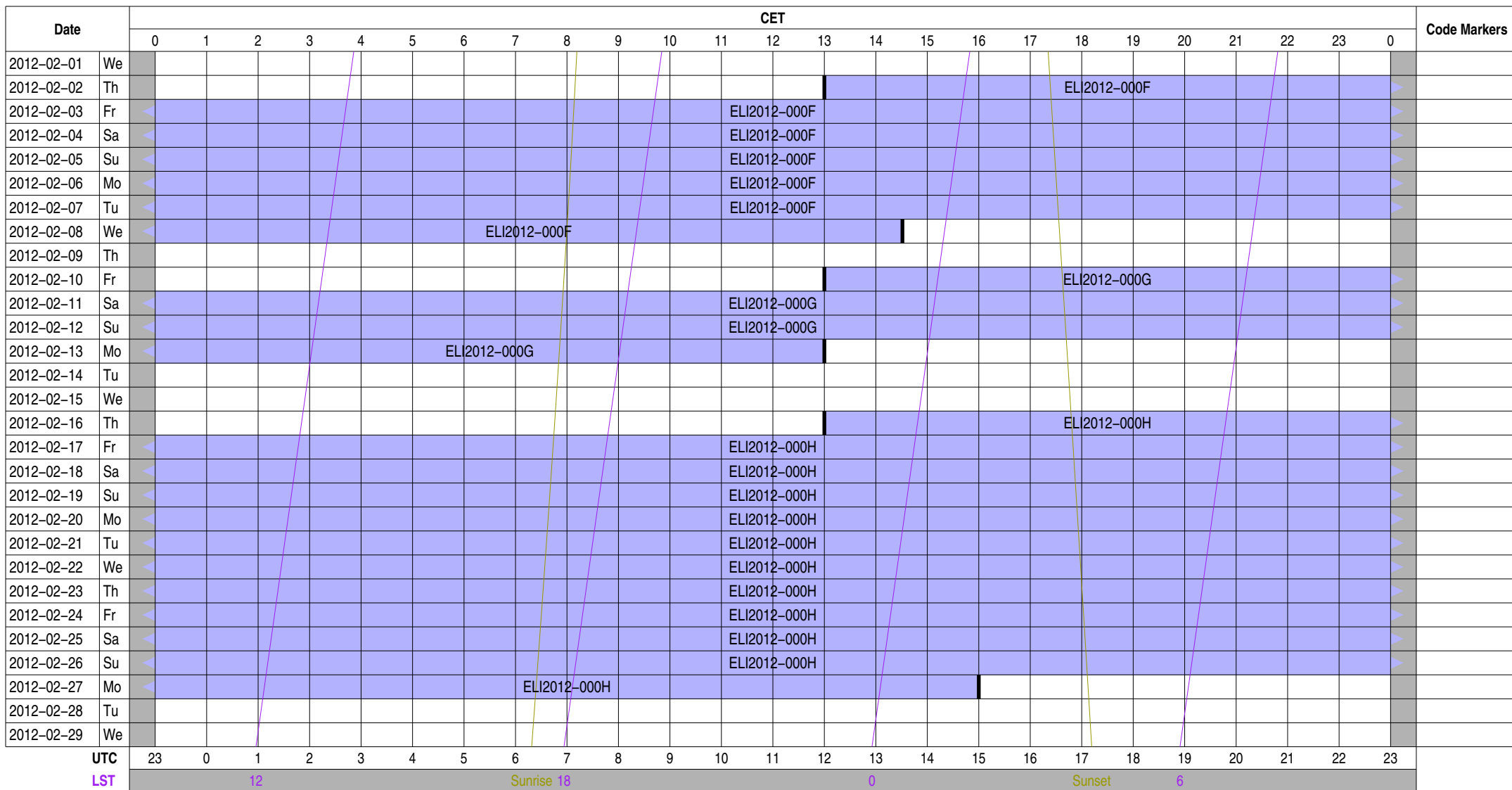
Science A (Astrometry)	Science N (AGN)	Test Observation	Juelich Mode
Science C (Cosmology)	Science O (Other)	Maintenance Mode	Piggyback Control
Science E (Extragalactic)	Science P (Pulsar)	ILT Mode	Piggyback Without Control
Science G (Galactic)	Science R (Cosmic Rays)	Effelsberg Mode	Experiment Warning
Science H (Ionosphere)	Science S (Solar System)	GLOW Mode	Override Possible

Observing Plan for Low Band Low, Unused Inputs

MPIfR Effelsberg LOFAR Station

2012-02-01 through 2012-02-29

For any publication based on observations with the Effelsberg LOFAR station, please use the following acknowledgment: "Based on observations made with the Effelsberg LOFAR station of the Max-Planck-Institut für Radioastronomie (MPIfR) at Effelsberg."



Normal Experiment Code Markers

Other Experiment Code Markers

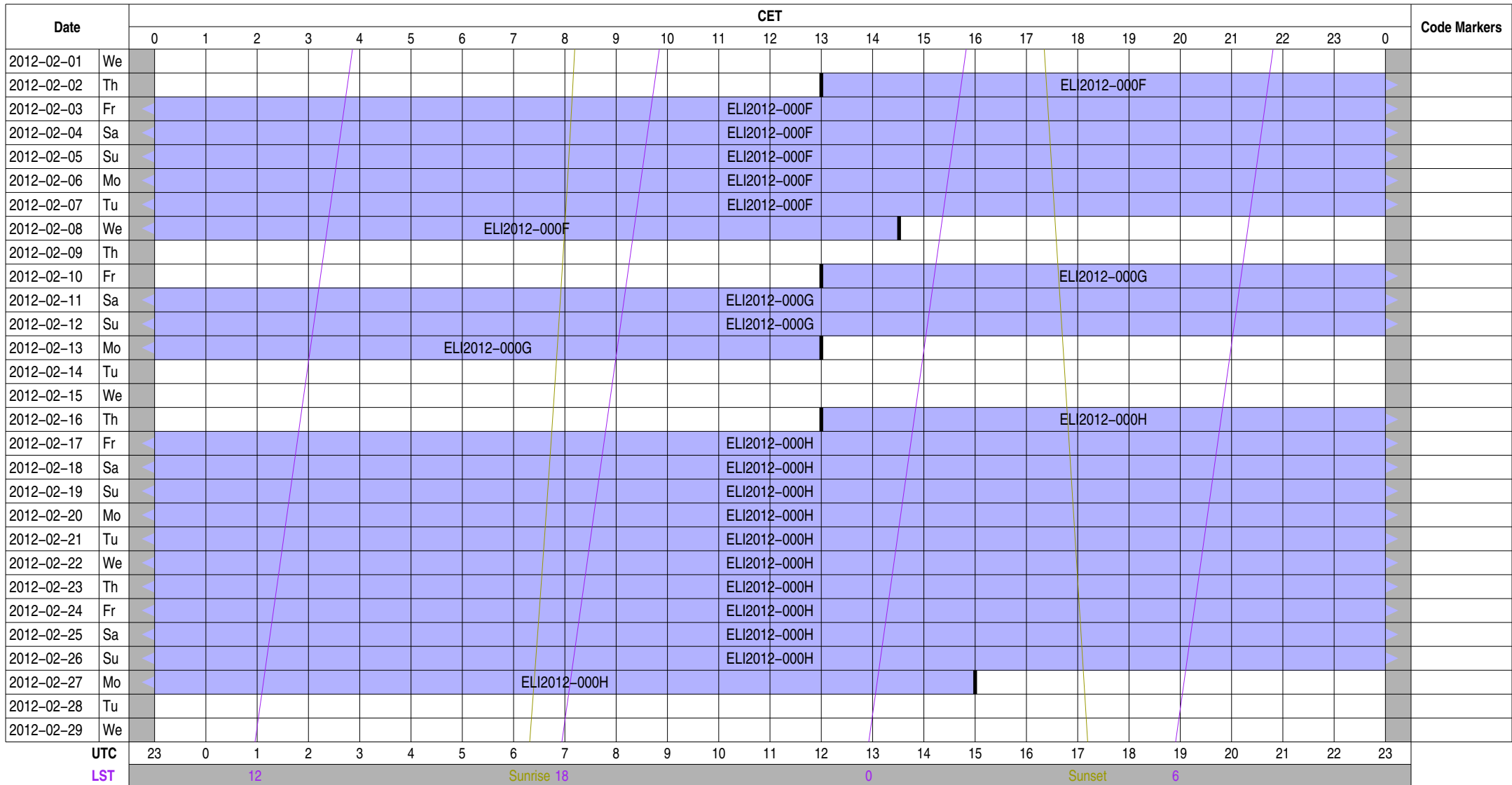
Color Meanings

Science A (Astrometry)	Science N (AGN)	Test Observation	Juelich Mode
Science C (Cosmology)	Science O (Other)	Maintenance Mode	Piggyback Control
Science E (Extragalactic)	Science P (Pulsar)	ILT Mode	Piggyback Without Control
Science G (Galactic)	Science R (Cosmic Rays)	Effelsberg Mode	Experiment Warning
Science H (Ionosphere)	Science S (Solar System)	GLOW Mode	Override Possible

Observing Plan for Station Interferometer

MPIfR Effelsberg LOFAR Station

2012-02-01 through 2012-02-29



Normal Experiment Code Markers

Other Experiment Code Markers

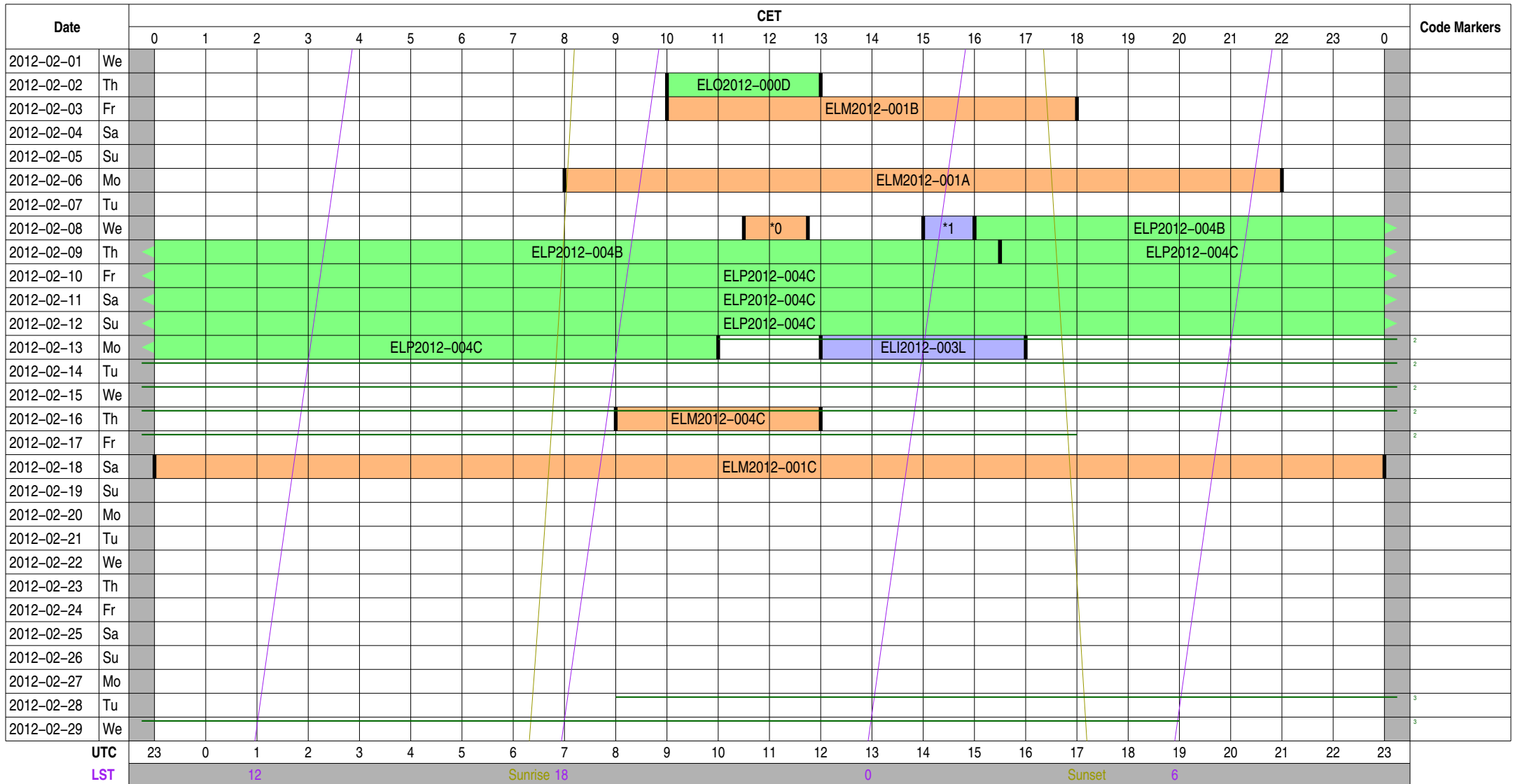
Color Meanings

- | | | | |
|---------------------------|--------------------------|------------------|---------------------------|
| Science A (Astrometry) | Science N (AGN) | Test Observation | Juelich Mode |
| Science C (Cosmology) | Science O (Other) | Maintenance Mode | Piggyback Control |
| Science E (Extragalactic) | Science P (Pulsar) | ILT Mode | Piggyback Without Control |
| Science G (Galactic) | Science R (Cosmic Rays) | Effelsberg Mode | Experiment Warning |
| Science H (Ionosphere) | Science S (Solar System) | GLOW Mode | Override Possible |

Observing Plan for lofar1 Computer

MPIfR Effelsberg LOFAR Station

2012-02-01 through 2012-02-29



Normal Experiment Code Markers

- 0 ELM2012-004B
- 1 ELI2012-003J

Other Experiment Code Markers

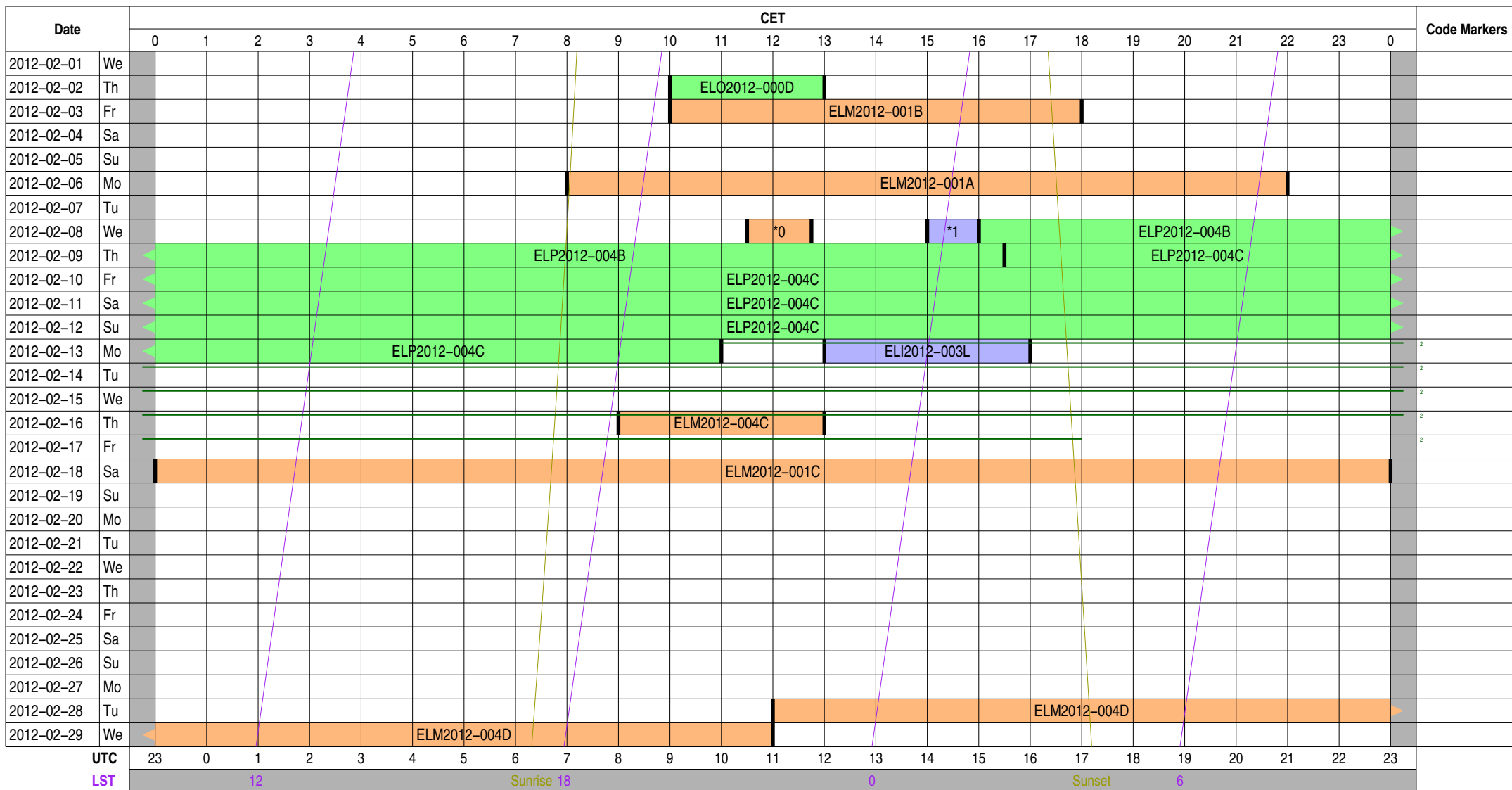
- 2 ELP2012-004C
- 3 ELP2012-005

Color Meanings

- Science A (Astrometry)
- Science C (Cosmology)
- Science E (Extragalactic)
- Science G (Galactic)
- Science H (Ionosphere)
- Science N (AGN)
- Science O (Other)
- Science P (Pulsar)
- Science R (Cosmic Rays)
- Science S (Solar System)
- Test Observation
- Maintenance Mode
- ILT Mode
- Effelsberg Mode
- GLOW Mode
- Juelich Mode
- Piggyback Control
- Piggyback Without Control
- Experiment Warning
- Override Possible

Observing Plan for lofar2 Computer MPIfR Effelsberg LOFAR Station 2012-02-01 through 2012-02-29

For any publication based on observations with the Effelsberg LOFAR station, please use the following acknowledgment: "Based on observations made with the Effelsberg LOFAR station of the Max-Planck-Institut für Radioastronomie (MPIfR) at Effelsberg."



Normal Experiment Code Markers

- 0 ELM2012-004B
- 1 ELI2012-003J

Other Experiment Code Markers

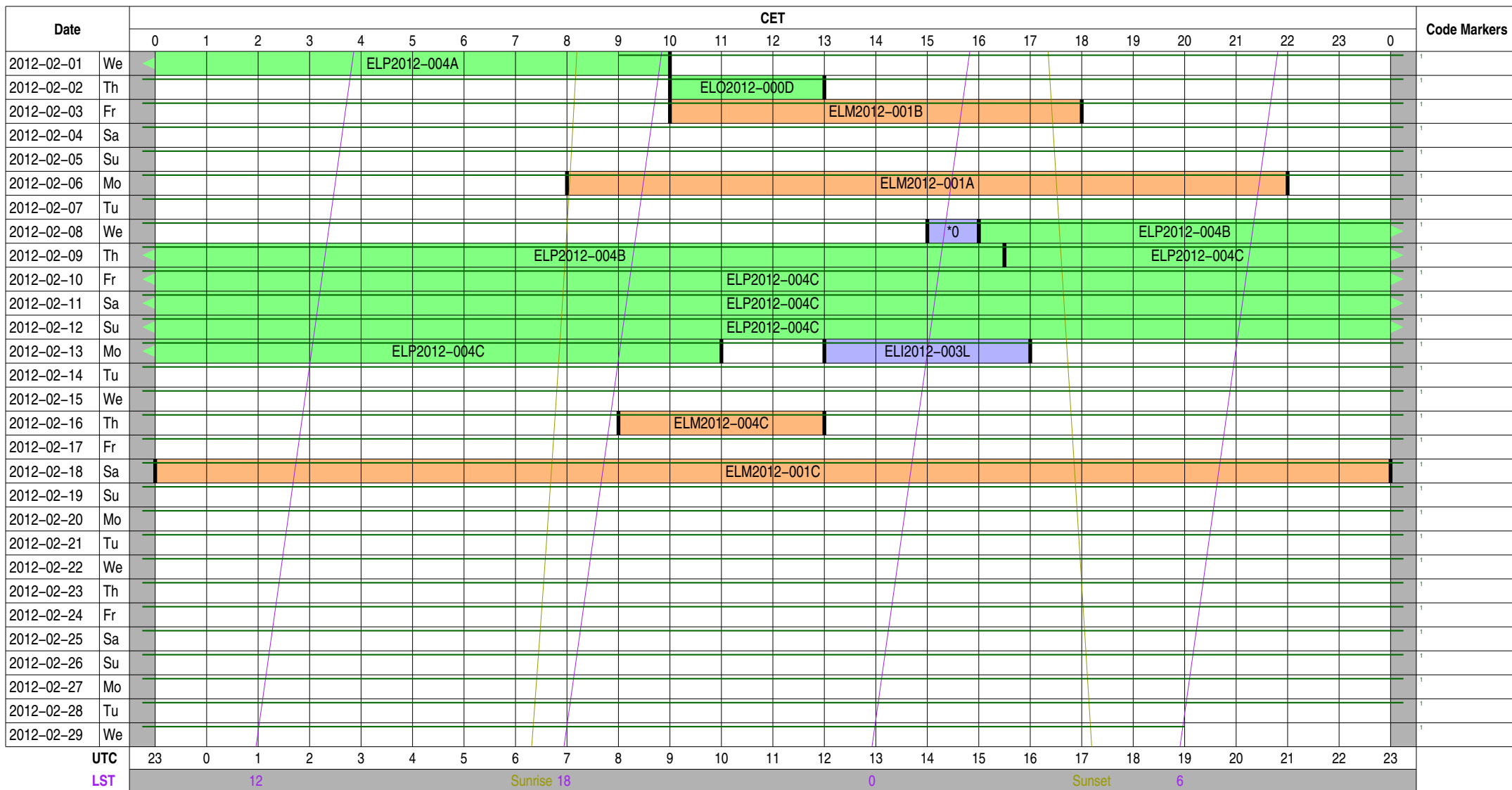
- 2 ELP2012-004C

Color Meanings

- | | | | |
|---------------------------|--------------------------|------------------|---------------------------|
| Science A (Astrometry) | Science N (AGN) | Test Observation | Juelich Mode |
| Science C (Cosmology) | Science O (Other) | Maintenance Mode | Piggyback Control |
| Science E (Extragalactic) | Science P (Pulsar) | ILT Mode | Piggyback Without Control |
| Science G (Galactic) | Science R (Cosmic Rays) | Effelsberg Mode | Experiment Warning |
| Science H (Ionosphere) | Science S (Solar System) | GLOW Mode | Override Possible |

Observing Plan for lofar3 Computer MPIfR Effelsberg LOFAR Station 2012-02-01 through 2012-02-29

For any publication based on observations with the Effelsberg LOFAR station, please use the following acknowledgment: "Based on observations made with the Effelsberg LOFAR station of the Max-Planck-Institut für Radioastronomie (MPIfR) at Effelsberg."



Normal Experiment Code Markers

0 ELI2012-003J

Other Experiment Code Markers

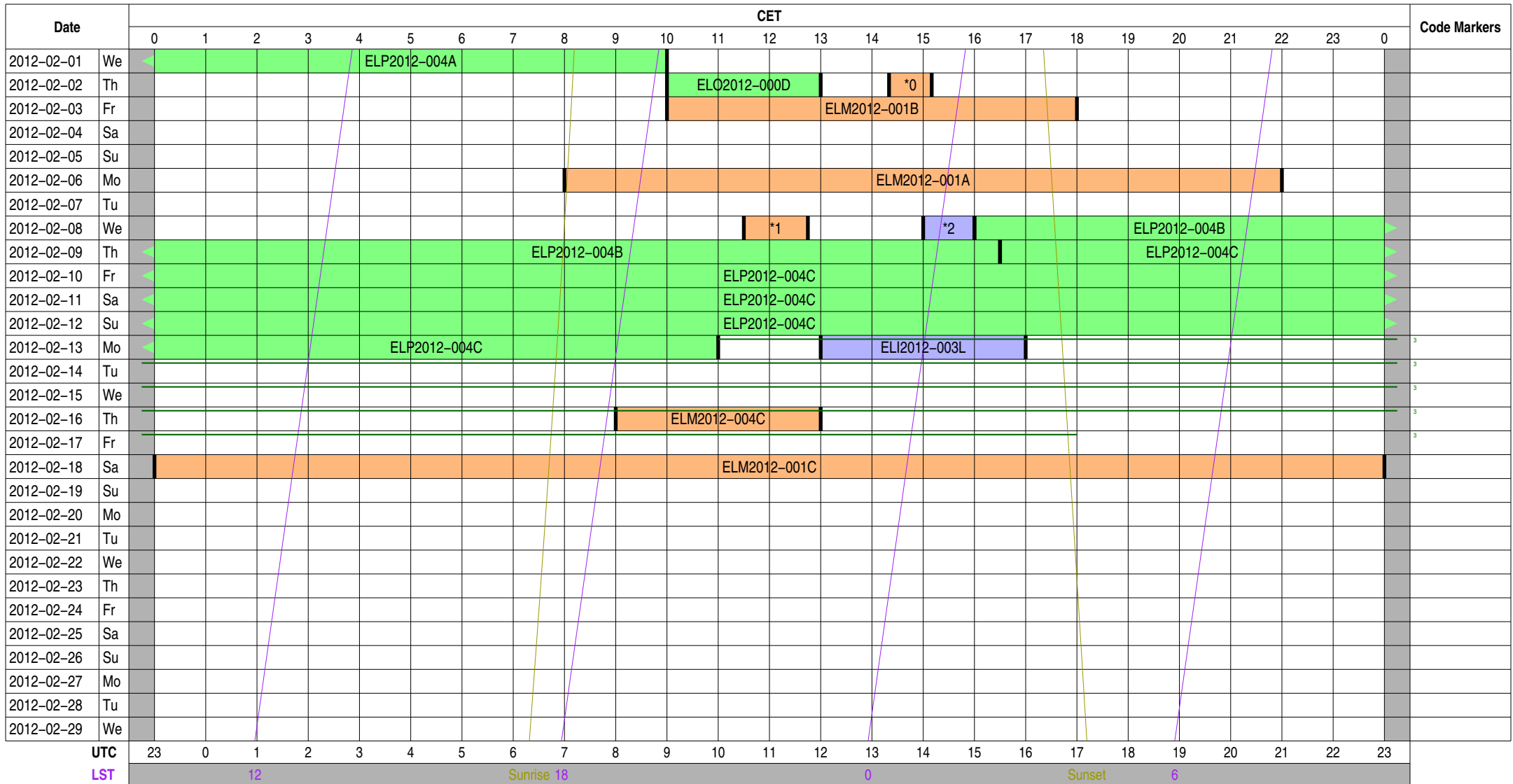
1 ELP2012-005

Color Meanings

Science A (Astrometry)	Science N (AGN)	Test Observation	Juelich Mode
Science C (Cosmology)	Science O (Other)	Maintenance Mode	Piggyback Control
Science E (Extragalactic)	Science P (Pulsar)	ILT Mode	Piggyback Without Control
Science G (Galactic)	Science R (Cosmic Rays)	Effelsberg Mode	Experiment Warning
Science H (Ionosphere)	Science S (Solar System)	GLOW Mode	Override Possible

Observing Plan for lofar4 Computer MPIfR Effelsberg LOFAR Station 2012-02-01 through 2012-02-29

For any publication based on observations with the Effelsberg LOFAR station, please use the following acknowledgment: "Based on observations made with the Effelsberg LOFAR station of the Max-Planck-Institut für Radioastronomie (MPIfR) at Effelsberg."



Normal Experiment Code Markers

- 0 ELM2012-004A
- 1 ELM2012-004B
- 2 ELI2012-003J

Other Experiment Code Markers

- 3 ELP2012-004C

Color Meanings

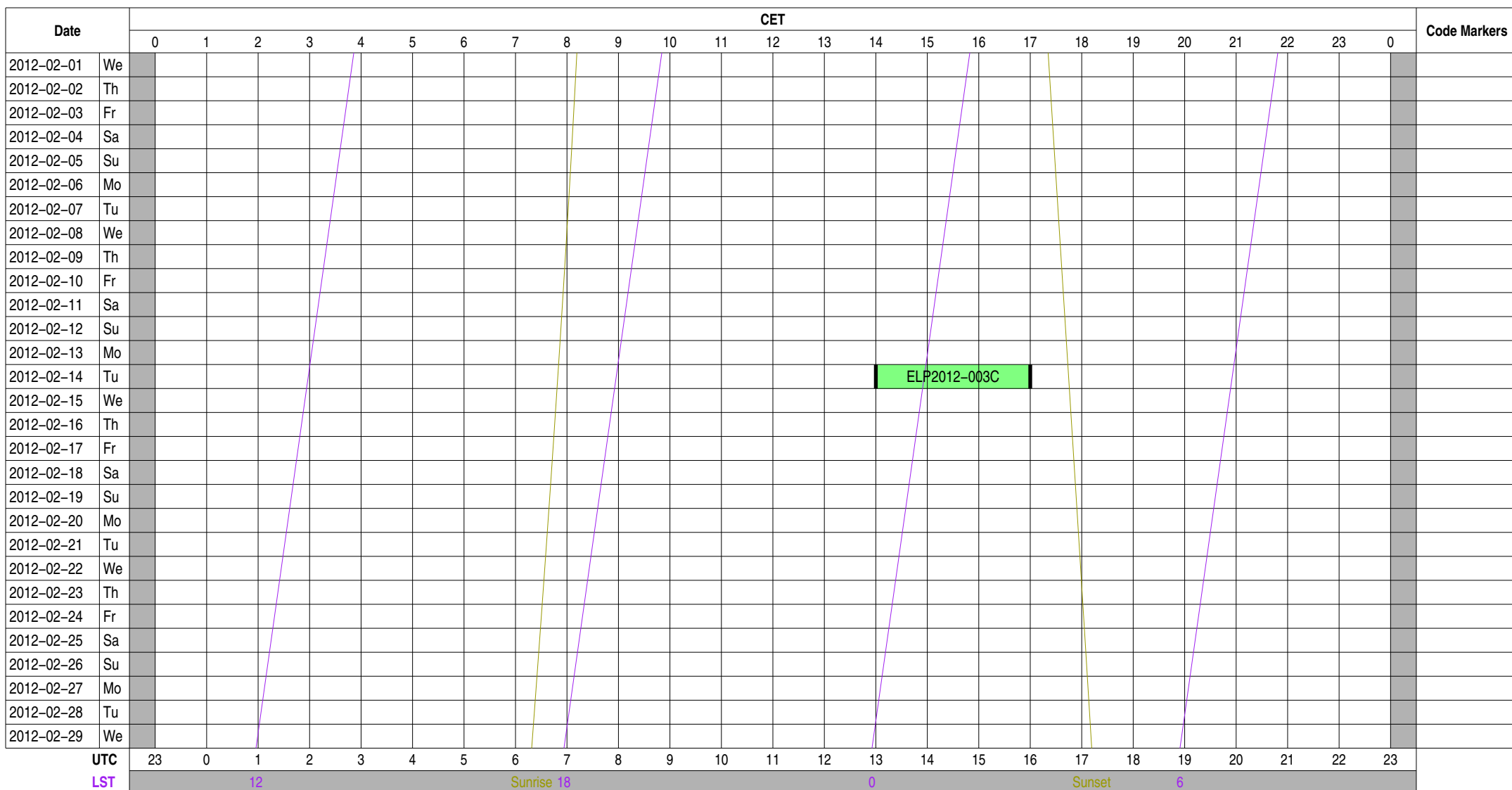
- | | | | |
|---------------------------|--------------------------|------------------|---------------------------|
| Science A (Astrometry) | Science N (AGN) | Test Observation | Juelich Mode |
| Science C (Cosmology) | Science O (Other) | Maintenance Mode | Piggyback Control |
| Science E (Extragalactic) | Science P (Pulsar) | ILT Mode | Piggyback Without Control |
| Science G (Galactic) | Science R (Cosmic Rays) | Effelsberg Mode | Experiment Warning |
| Science H (Ionosphere) | Science S (Solar System) | GLOW Mode | Override Possible |

Observing Plan for Iofar1a Pulsar Computer

MPIfR Effelsberg LOFAR Station

2012-02-01 through 2012-02-29

For any publication based on observations with the Effelsberg LOFAR station, please use the following acknowledgment: "Based on observations made with the Effelsberg LOFAR station of the Max-Planck-Institut für Radioastronomie (MPIfR) at Effelsberg."



Normal Experiment Code Markers

Other Experiment Code Markers

Color Meanings

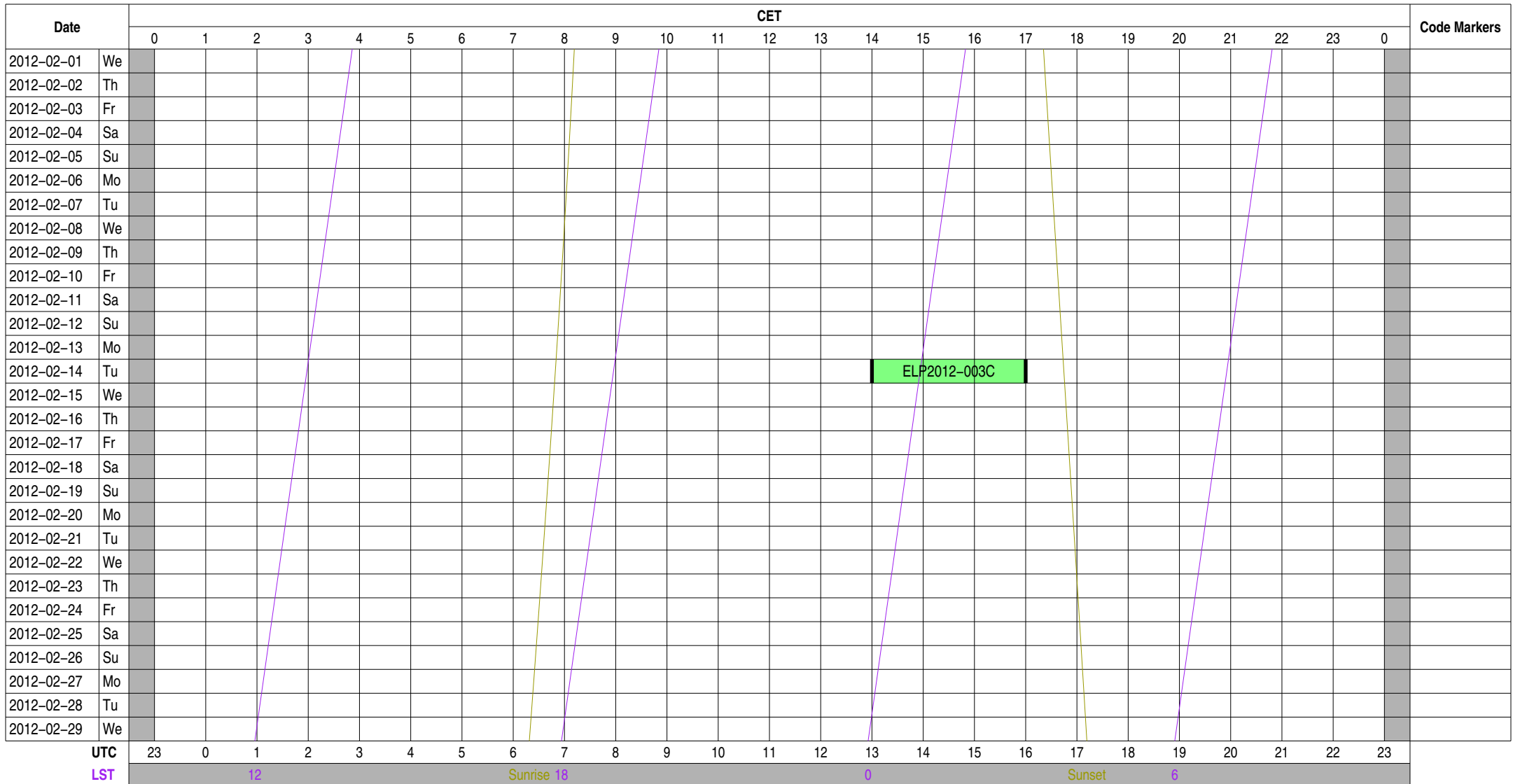
Science A (Astrometry)	Science N (AGN)	Test Observation	Juelich Mode
Science C (Cosmology)	Science O (Other)	Maintenance Mode	Piggyback Control
Science E (Extragalactic)	Science P (Pulsar)	ILT Mode	Piggyback Without Control
Science G (Galactic)	Science R (Cosmic Rays)	Effelsberg Mode	Experiment Warning
Science H (Ionosphere)	Science S (Solar System)	GLOW Mode	Override Possible

Observing Plan for Iofar2a Pulsar Computer

MPIfR Effelsberg LOFAR Station

2012-02-01 through 2012-02-29

For any publication based on observations with the Effelsberg LOFAR station, please use the following acknowledgment: "Based on observations made with the Effelsberg LOFAR station of the Max-Planck-Institut für Radioastronomie (MPIfR) at Effelsberg."



Normal Experiment Code Markers

Other Experiment Code Markers

Color Meanings

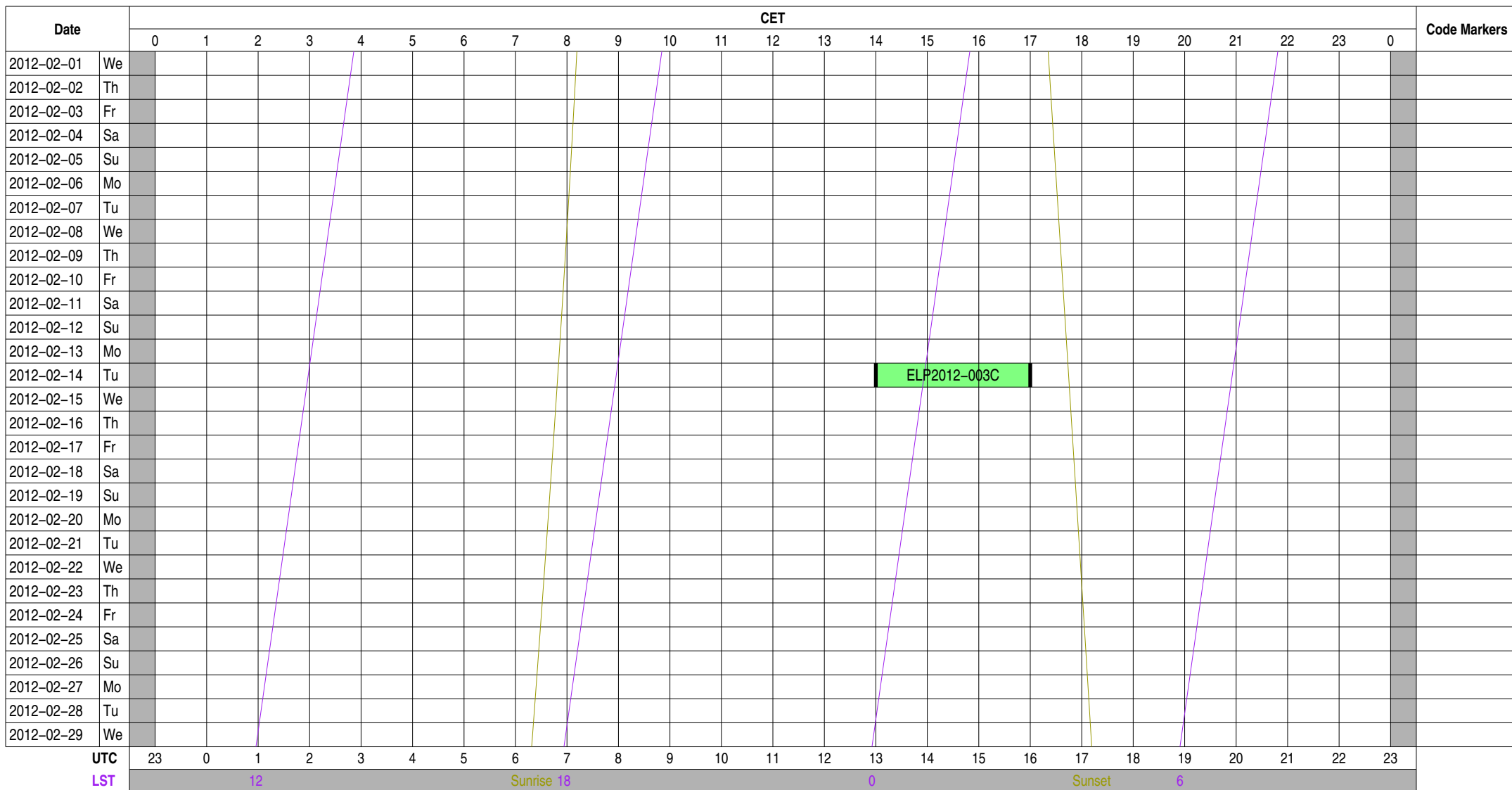
Science A (Astrometry)	Science N (AGN)	Test Observation	Juelich Mode
Science C (Cosmology)	Science O (Other)	Maintenance Mode	Piggyback Control
Science E (Extragalactic)	Science P (Pulsar)	ILT Mode	Piggyback Without Control
Science G (Galactic)	Science R (Cosmic Rays)	Effelsberg Mode	Experiment Warning
Science H (Ionosphere)	Science S (Solar System)	GLOW Mode	Override Possible

Observing Plan for Iofar3a Pulsar Computer

MPIfR Effelsberg LOFAR Station

2012-02-01 through 2012-02-29

For any publication based on observations with the Effelsberg LOFAR station, please use the following acknowledgment: "Based on observations made with the Effelsberg LOFAR station of the Max-Planck-Institut für Radioastronomie (MPIfR) at Effelsberg."



Normal Experiment Code Markers

Other Experiment Code Markers

Color Meanings

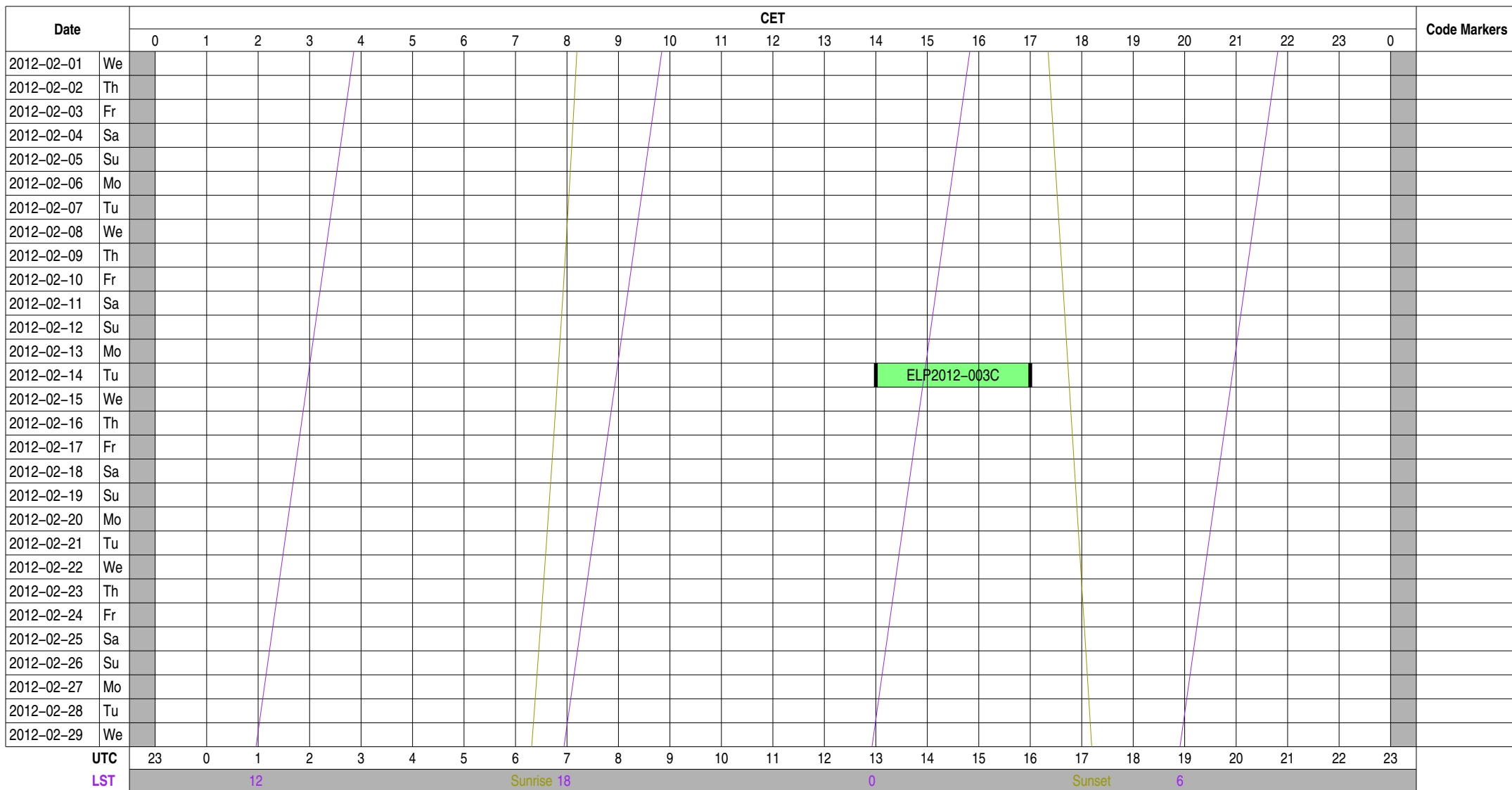
Science A (Astrometry)	Science N (AGN)	Test Observation	Juelich Mode
Science C (Cosmology)	Science O (Other)	Maintenance Mode	Piggyback Control
Science E (Extragalactic)	Science P (Pulsar)	ILT Mode	Piggyback Without Control
Science G (Galactic)	Science R (Cosmic Rays)	Effelsberg Mode	Experiment Warning
Science H (Ionosphere)	Science S (Solar System)	GLOW Mode	Override Possible

Observing Plan for Iofar4a Pulsar Computer

MPIfR Effelsberg LOFAR Station

2012-02-01 through 2012-02-29

For any publication based on observations with the Effelsberg LOFAR station, please use the following acknowledgment: "Based on observations made with the Effelsberg LOFAR station of the Max-Planck-Institut für Radioastronomie (MPIfR) at Effelsberg."



Normal Experiment Code Markers

Other Experiment Code Markers

Color Meanings

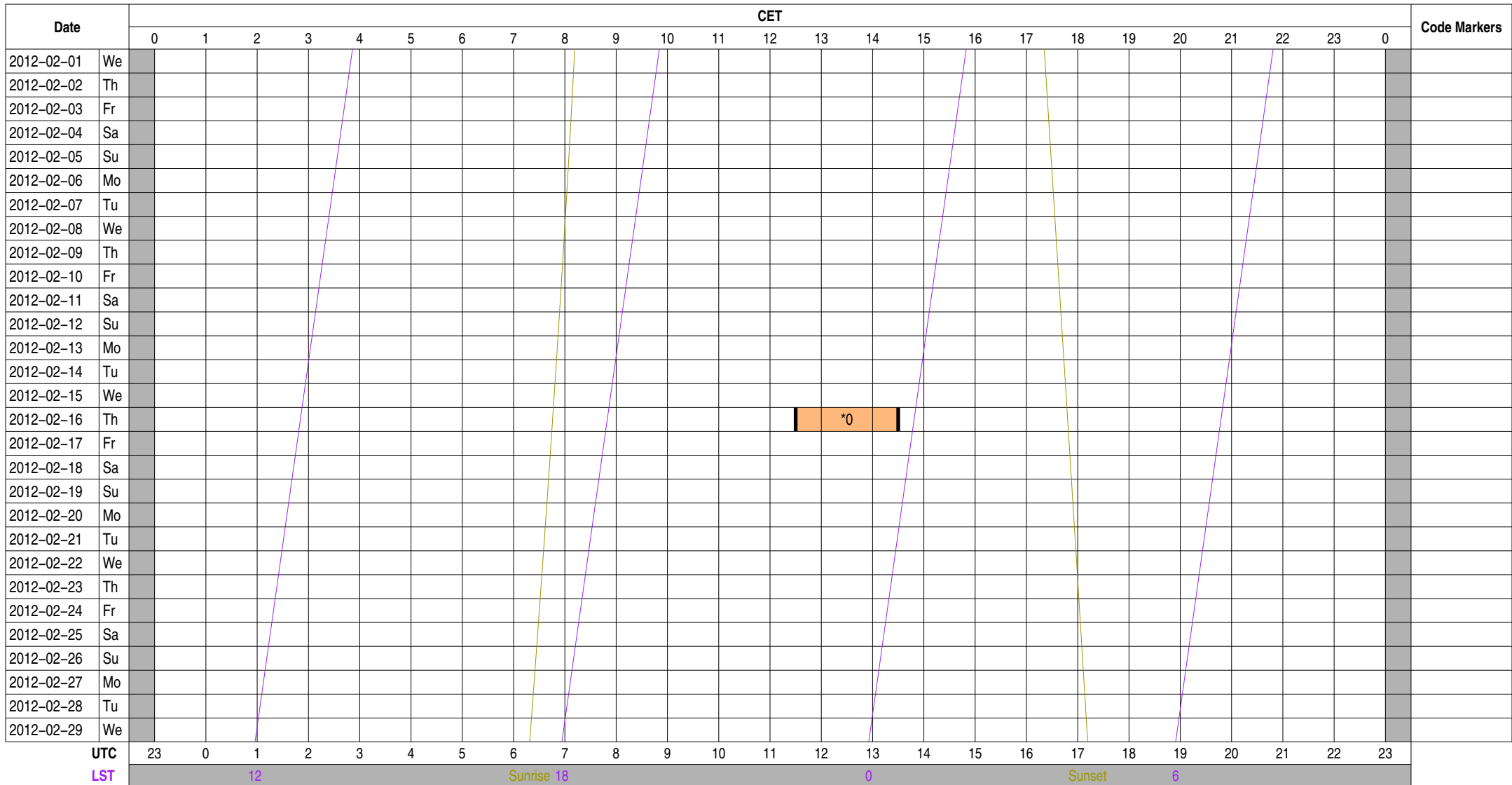
Science A (Astrometry)	Science N (AGN)	Test Observation	Juelich Mode
Science C (Cosmology)	Science O (Other)	Maintenance Mode	Piggyback Control
Science E (Extragalactic)	Science P (Pulsar)	ILT Mode	Piggyback Without Control
Science G (Galactic)	Science R (Cosmic Rays)	Effelsberg Mode	Experiment Warning
Science H (Ionosphere)	Science S (Solar System)	GLOW Mode	Override Possible

Observing Plan for Iofar1b Recording Computer

MPIfR Effelsberg LOFAR Station

2012-02-01 through 2012-02-29

For any publication based on observations with the Effelsberg LOFAR station, please use the following acknowledgment: "Based on observations made with the Effelsberg LOFAR station of the Max-Planck-Institut für Radioastronomie (MPIfR) at Effelsberg."



Normal Experiment Code Markers

0 ELM2012-004C

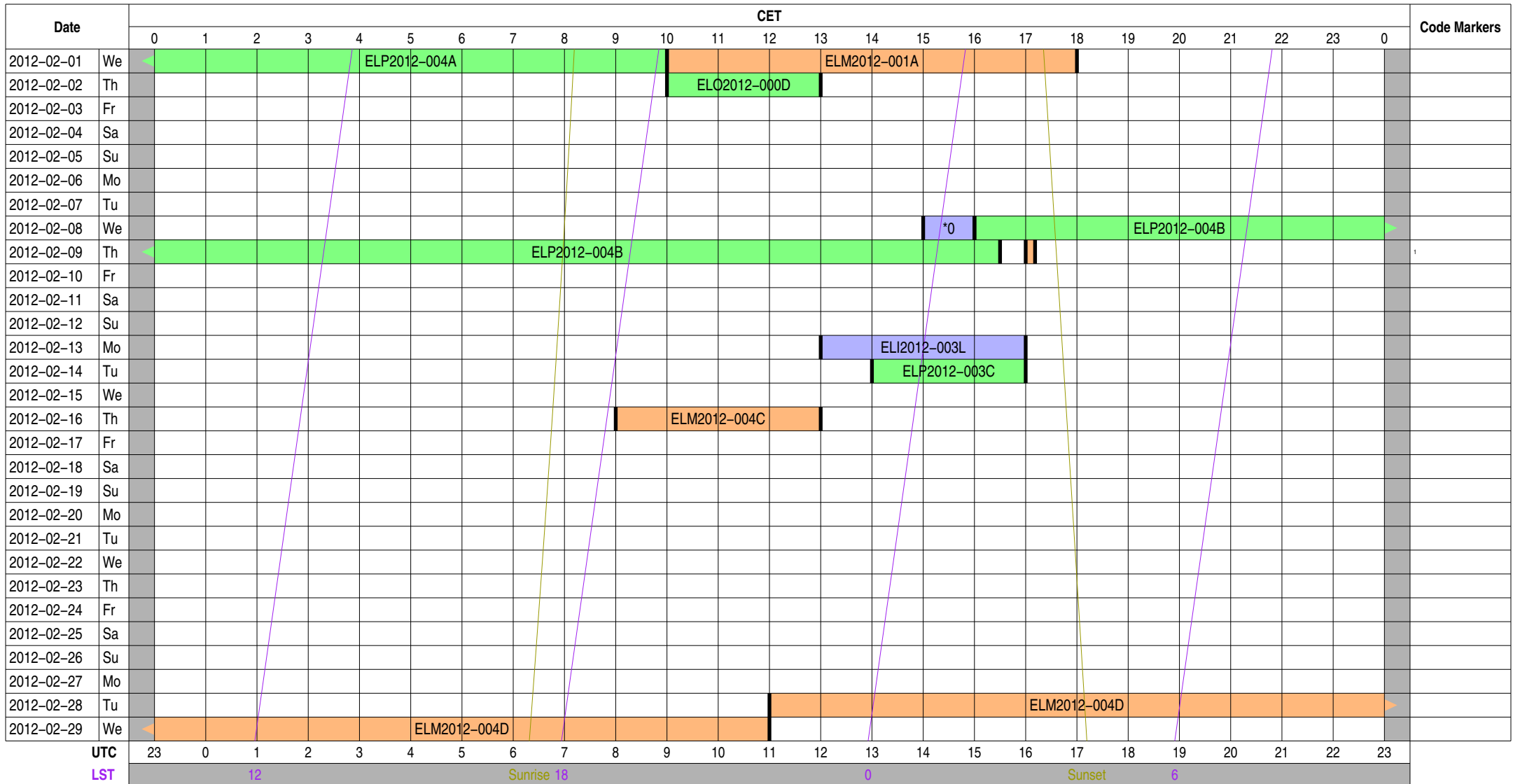
Other Experiment Code Markers

Color Meanings

- | | | | |
|---------------------------|--------------------------|------------------|---------------------------|
| Science A (Astrometry) | Science N (AGN) | Test Observation | Juelich Mode |
| Science C (Cosmology) | Science O (Other) | Maintenance Mode | Piggyback Control |
| Science E (Extragalactic) | Science P (Pulsar) | ILT Mode | Piggyback Without Control |
| Science G (Galactic) | Science R (Cosmic Rays) | Effelsberg Mode | Experiment Warning |
| Science H (Ionosphere) | Science S (Solar System) | GLOW Mode | Override Possible |

Observing Plan for Iofarx Computer MPIfR Effelsberg LOFAR Station 2012-02-01 through 2012-02-29

For any publication based on observations with the Effelsberg LOFAR station, please use the following acknowledgment: "Based on observations made with the Effelsberg LOFAR station of the Max-Planck-Institut für Radioastronomie (MPIfR) at Effelsberg."



Normal Experiment Code Markers

- 0 ELI2012-003J
- 1 ELM2012-001B

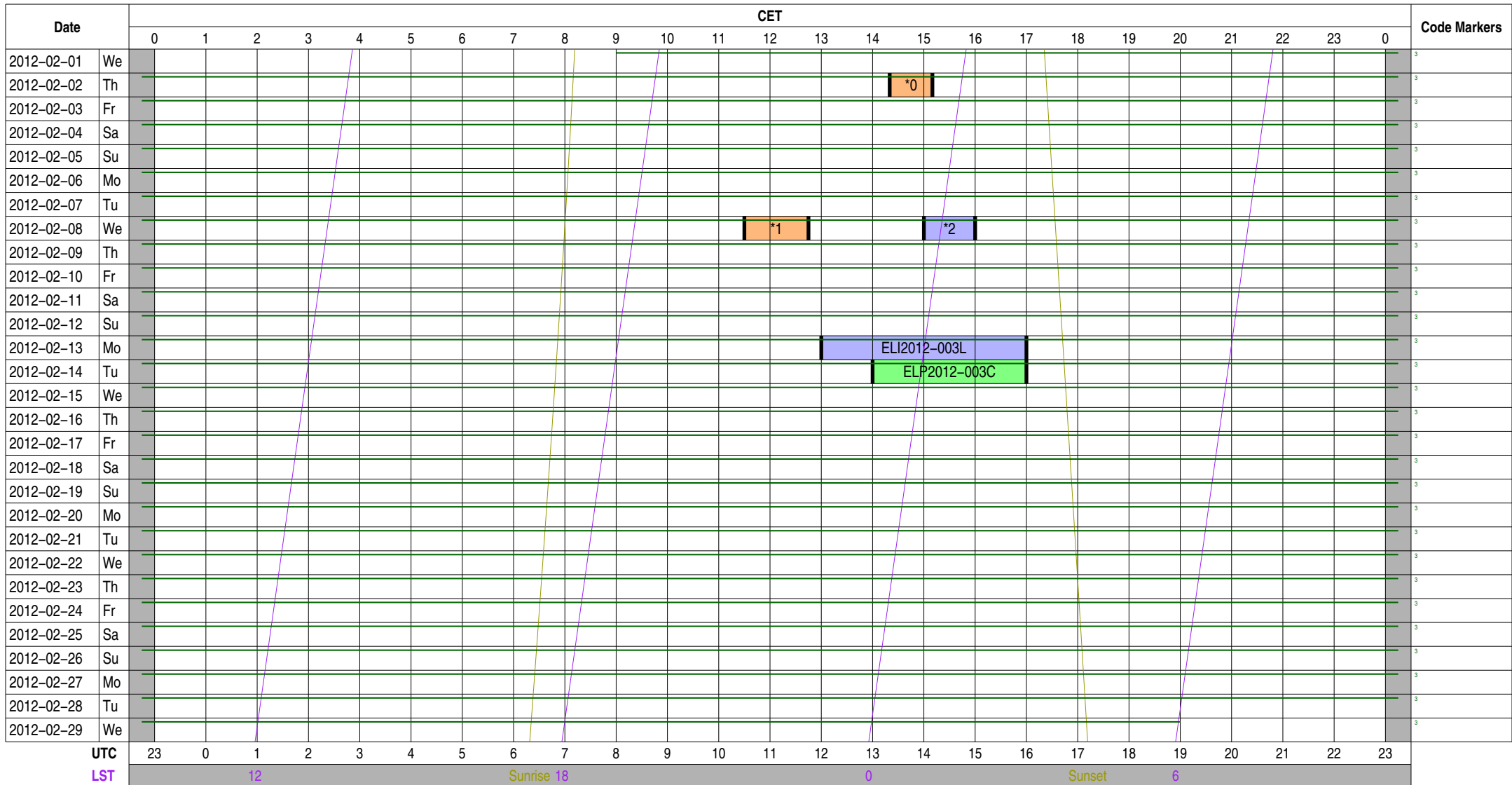
Other Experiment Code Markers

Color Meanings

- | | | | |
|--|---|---|--|
| Science A (Astrometry) | Science N (AGN) | Test Observation | Juelich Mode |
| Science C (Cosmology) | Science O (Other) | Maintenance Mode | Piggyback Control |
| Science E (Extragalactic) | Science P (Pulsar) | ILT Mode | Piggyback Without Control |
| Science G (Galactic) | Science R (Cosmic Rays) | Effelsberg Mode | Experiment Warning |
| Science H (Ionosphere) | Science S (Solar System) | GLOW Mode | Override Possible |

Observing Plan for Iofarsrv Computer MPIfR Effelsberg LOFAR Station 2012-02-01 through 2012-02-29

For any publication based on observations with the Effelsberg LOFAR station, please use the following acknowledgment: "Based on observations made with the Effelsberg LOFAR station of the Max-Planck-Institut für Radioastronomie (MPIfR) at Effelsberg."



Normal Experiment Code Markers

- 0 ELM2012-004A
- 1 ELM2012-004B
- 2 ELI2012-003J

Other Experiment Code Markers

- 3 ELP2012-005

Color Meanings

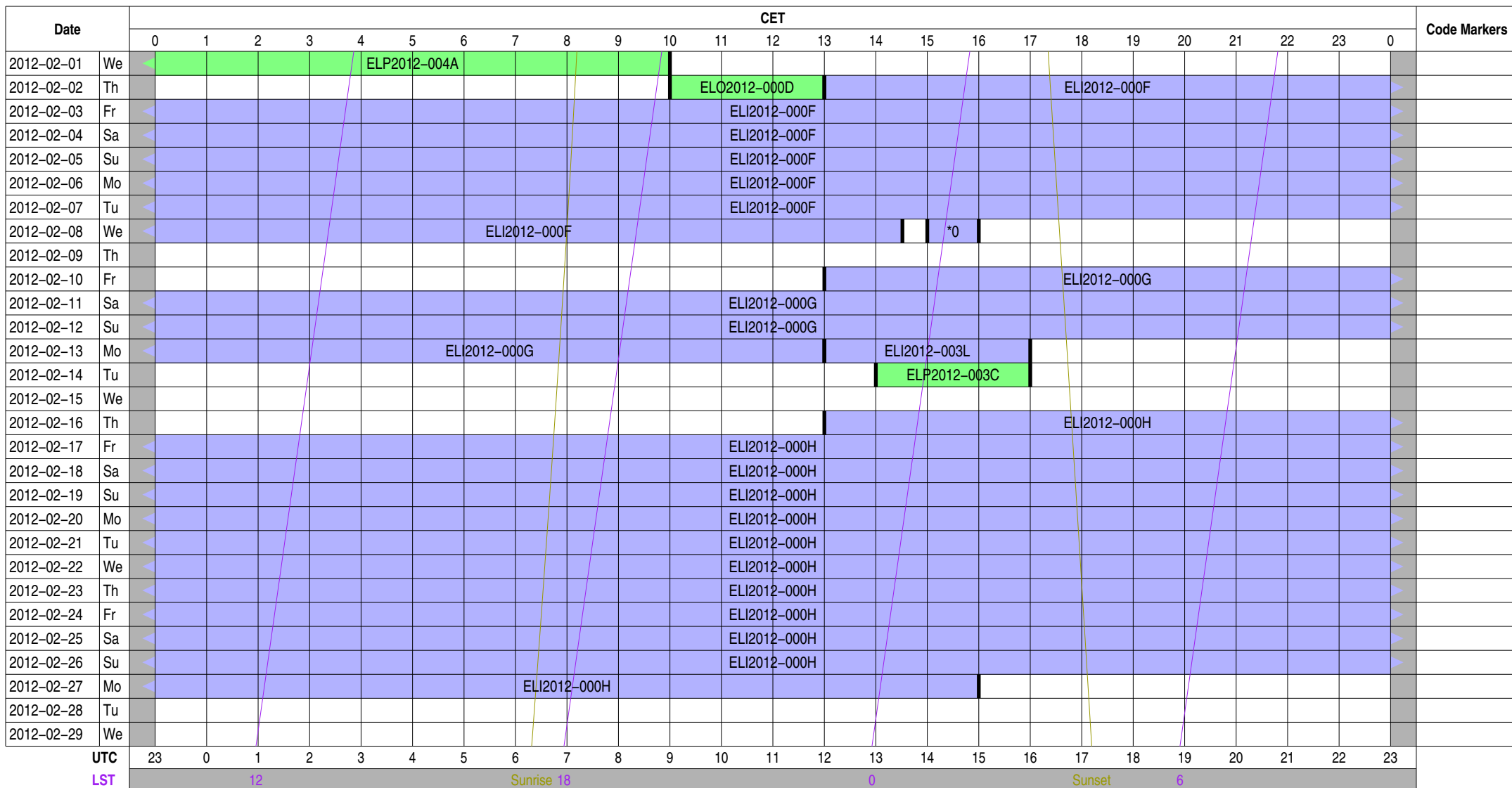
- | | | | |
|---------------------------|--------------------------|------------------|---------------------------|
| Science A (Astrometry) | Science N (AGN) | Test Observation | Juelich Mode |
| Science C (Cosmology) | Science O (Other) | Maintenance Mode | Piggyback Control |
| Science E (Extragalactic) | Science P (Pulsar) | ILT Mode | Piggyback Without Control |
| Science G (Galactic) | Science R (Cosmic Rays) | Effelsberg Mode | Experiment Warning |
| Science H (Ionosphere) | Science S (Solar System) | GLOW Mode | Override Possible |

Observing Plan for LOFAR Fiber Connection

MPIfR Effelsberg LOFAR Station

2012-02-01 through 2012-02-29

For any publication based on observations with the Effelsberg LOFAR station, please use the following acknowledgment: "Based on observations made with the Effelsberg LOFAR station of the Max-Planck-Institut für Radioastronomie (MPIfR) at Effelsberg."



Normal Experiment Code Markers

0 ELI2012-003J

Other Experiment Code Markers

Color Meanings

Science A (Astrometry)	Science N (AGN)	Test Observation	Juelich Mode
Science C (Cosmology)	Science O (Other)	Maintenance Mode	Piggyback Control
Science E (Extragalactic)	Science P (Pulsar)	ILT Mode	Piggyback Without Control
Science G (Galactic)	Science R (Cosmic Rays)	Effelsberg Mode	Experiment Warning
Science H (Ionosphere)	Science S (Solar System)	GLOW Mode	Override Possible

Observing Plan for Operator On-Duty

MPIfR Effelsberg LOFAR Station

2012-02-01 through 2012-02-29

For any publication based on observations with the Effelsberg LOFAR station, please use the following acknowledgment: "Based on observations made with the Effelsberg LOFAR station of the Max-Planck-Institut für Radioastronomie (MPIfR) at Effelsberg."

Date	CET																								Code Markers	
	0	1	2	3	4	5	6	7	8	9	10	11	12	13	14	15	16	17	18	19	20	21	22	23		0
2012-02-01	We											ELD2012-002A														
2012-02-02	Th											ELD2012-002A														
2012-02-03	Fr											ELD2012-002A														
2012-02-04	Sa											ELD2012-002A														
2012-02-05	Su											ELD2012-002A														
2012-02-06	Mo											ELD2012-002A														
2012-02-07	Tu											ELD2012-002A														
2012-02-08	We											ELD2012-002A														
2012-02-09	Th											ELD2012-002A														
2012-02-10	Fr											ELD2012-002A														
2012-02-11	Sa											ELD2012-002A														
2012-02-12	Su											ELD2012-002A														
2012-02-13	Mo											ELD2012-002A														
2012-02-14	Tu											ELD2012-002A														
2012-02-15	We											ELD2012-002A														
2012-02-16	Th											ELD2012-002A														
2012-02-17	Fr											ELD2012-002A														
2012-02-18	Sa											ELD2012-002A														
2012-02-19	Su											ELD2012-002A														
2012-02-20	Mo											ELD2012-002A														
2012-02-21	Tu											ELD2012-002A														
2012-02-22	We											ELD2012-002A														
2012-02-23	Th											ELD2012-002A														
2012-02-24	Fr											ELD2012-002A														
2012-02-25	Sa											ELD2012-002A														
2012-02-26	Su											ELD2012-002A														
2012-02-27	Mo											ELD2012-002A														
2012-02-28	Tu											ELD2012-002A														
2012-02-29	We											ELD2012-002A														
UTC	23	0	1	2	3	4	5	6	7	8	9	10	11	12	13	14	15	16	17	18	19	20	21	22	23	
LST			12					Sunrise 18							0				Sunset		6					

Normal Experiment Code Markers

Other Experiment Code Markers

Color Meanings

- 100 m Operator
- Anderson
- Kuniyoshi
- Homeffer
- Other
- Unknown

Experiment Information for Normal Observations

ELI2012-000	Anderson, ILT Operations	observer@astron.nl	+31 521 595 777	Main ILT Observations, ILT Operations only on-duty 9--17, M
ELI2012-000	Anderson, ILT Operations	observer@astron.nl	+31 521 595 777	Main ILT Observations, ILT Operations only on-duty 9--17, M
ELI2012-000	Anderson, ILT Operations	observer@astron.nl	+31 521 595 777	Main ILT Observations, ILT Operations only on-duty 9--17, M
ELI2012-000	Anderson, ILT Operations	observer@astron.nl	+31 521 595 777	Main ILT Observations, ILT Operations only on-duty 9--17, M
ELI2012-003	Anderson, Kuniyoshi, Horneffer	lofar-ops@mpifr-bonn.mpg.de	+49 228 525 356	Handover operations for local to ILT mode
ELI2012-003	Anderson, Kuniyoshi, Horneffer	lofar-ops@mpifr-bonn.mpg.de	+49 228 525 356	Handover operations for local to ILT mode
ELI2012-003	Anderson, Kuniyoshi, Horneffer	lofar-ops@mpifr-bonn.mpg.de	+49 228 525 356	Handover operations for local to ILT mode
ELI2012-003	Anderson, Kuniyoshi, Horneffer	lofar-ops@mpifr-bonn.mpg.de	+49 228 525 356	Handover operations for local to ILT mode
ELM2012-001	Hoerneffer	horneff@mpifr-bonn.mpg.de	+49 228 525 505	fixing hardware
ELM2012-001	Hoerneffer	horneff@mpifr-bonn.mpg.de	+49 228 525 505	fixing hardware
ELM2012-001	Hoerneffer	horneff@mpifr-bonn.mpg.de	+49 228 525 505	fixing hardware
ELM2012-001	Hoerneffer	horneff@mpifr-bonn.mpg.de	+49 228 525 505	fixing hardware
ELM2012-001	Hoerneffer	horneff@mpifr-bonn.mpg.de	+49 228 525 505	fixing hardware
ELM2012-004	Anderson	anderson@mpifr-bonn.mpg.de	+49 228 525 356	system administration
ELM2012-004	Anderson	anderson@mpifr-bonn.mpg.de	+49 228 525 356	system administration
ELM2012-004	Anderson	anderson@mpifr-bonn.mpg.de	+49 228 525 356	system administration
ELM2012-004	Anderson	anderson@mpifr-bonn.mpg.de	+49 228 525 356	system administration
ELM2012-004	Anderson	anderson@mpifr-bonn.mpg.de	+49 228 525 356	system administration
ELO2012-000	Anderson	anderson@mpifr-bonn.mpg.de	+49 1 737 838 125	testing Cas A and Cyg A brightness across calibration table
ELO2012-000	Anderson	anderson@mpifr-bonn.mpg.de	+49 1 737 838 125	testing Cas A and Cyg A brightness across calibration table
ELP2012-003	Verbiest	verbiest@mpifr-bonn.mpg.de	+49 228 525 246	testing pulsar sensitivity across calibration table change
ELP2012-003	Verbiest	verbiest@mpifr-bonn.mpg.de	+49 228 525 246	testing pulsar sensitivity across calibration table change
ELP2012-004	Kuniyoshi	mkuniyos@mpifr-bonn.mpg.de	+49 228 525 505	station beam testing with pulsars
ELP2012-004	Kuniyoshi	mkuniyos@mpifr-bonn.mpg.de	+49 228 525 505	station beam testing with pulsars
ELP2012-004	Kuniyoshi	mkuniyos@mpifr-bonn.mpg.de	+49 228 525 505	station beam testing with pulsars
ELP2012-004	Kuniyoshi	mkuniyos@mpifr-bonn.mpg.de	+49 228 525 505	station beam testing with pulsars

Experiment Information for Other Actions

ELP2012-004	Kuniyoshi	mkuniyos@mpi-fr-bonn.mpg.de	+49 228 525 505	station beam testing with pulsars
ELP2012-004	Kuniyoshi	mkuniyos@mpi-fr-bonn.mpg.de	+49 228 525 505	station beam testing with pulsars
ELP2012-005	Kuniyoshi	mkuniyos@mpi-fr-bonn.mpg.de	+49 228 525 505	software testing
ELP2012-005	Kuniyoshi	mkuniyos@mpi-fr-bonn.mpg.de	+49 228 525 505	software testing
ELP2012-005	Kuniyoshi	mkuniyos@mpi-fr-bonn.mpg.de	+49 228 525 505	software testing

Experiment Information for Operator On-Duty Schedule

ELD2012-002	Kuniyoshi	mkuniyos@mpifr-bonn.mpg.de	+49 228 525 505	Project Scheduler
ELD2012-002	Kuniyoshi	mkuniyos@mpifr-bonn.mpg.de	+49 228 525 505	Project Scheduler

Time Usage [hours] for Other Actions

Experiment Code	station	TBB	HBA	LBH	LBL	interfe	lofar1	lofar2	lofar3	lofar4	lofar1a	lofar2a	lofar3a	lofar4a	lofar1b	lofarx	lofarsr	fiber	duty
ELP2012-004							103.00	103.00		103.00									
ELP2012-004 C							103.00	103.00		103.00									
ELP2012-005							35.00		683.00								683.00		
ELP2012-005							35.00												
ELP2012-005									683.00								683.00		

