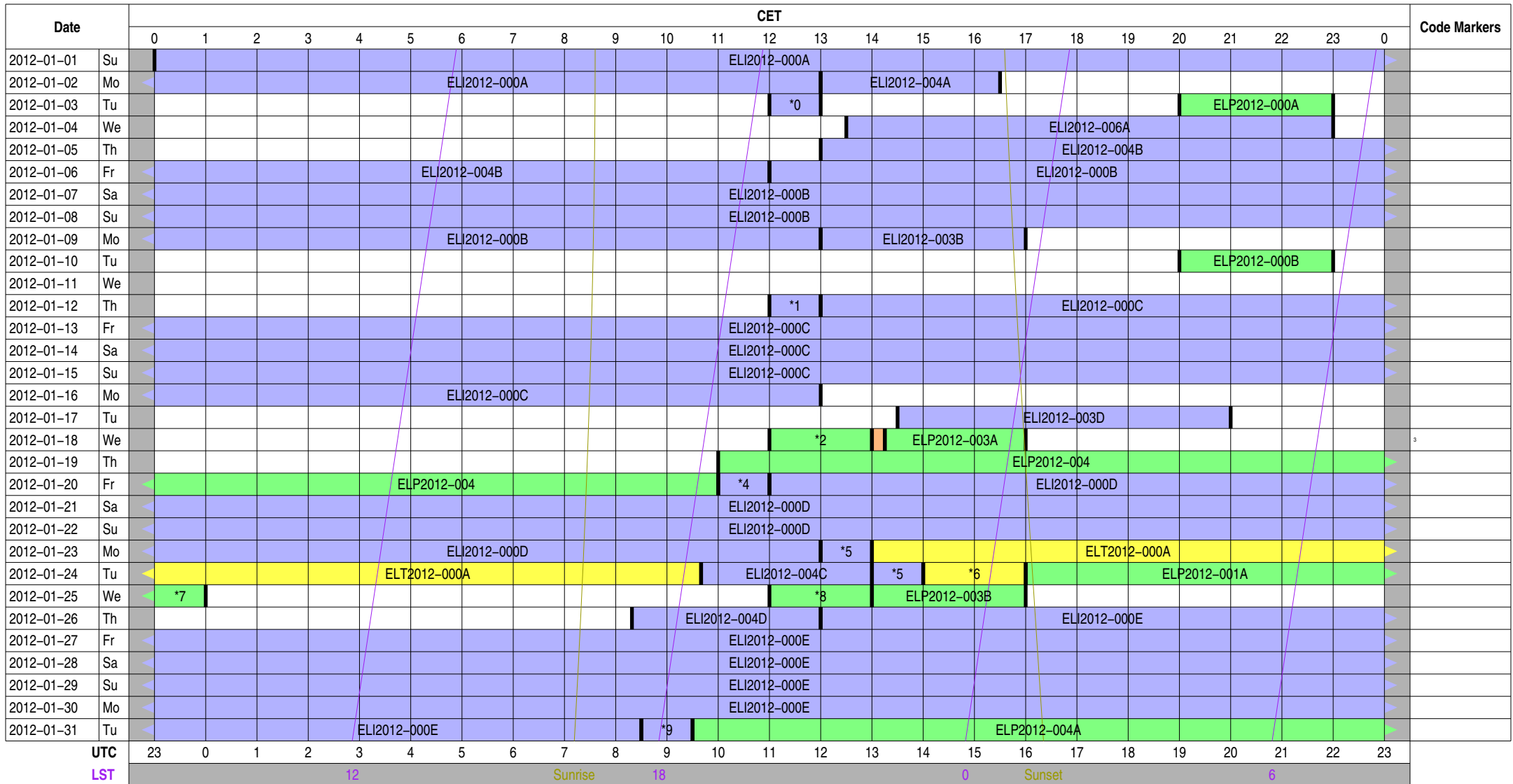


Observing Plan for Station Control (LCU)

MPIfR Effelsberg LOFAR Station

2012-01-01 through 2012-01-31

For any publication based on observations with the Effelsberg LOFAR station, please use the following acknowledgment: "Based on observations made with the Effelsberg LOFAR station of the Max-Planck-Institut für Radioastronomie (MPIfR) at Effelsberg."



Normal Experiment Code Markers

0	ELI2012-003A	5	ELI2012-003F
1	ELI2012-003C	6	ELT2012-000A
2	ELP2012-000A	7	ELP2012-001A
3	ELM2012-002A	8	ELP2012-000C
4	ELI2012-003E	9	ELI2012-003H

Other Experiment Code Markers

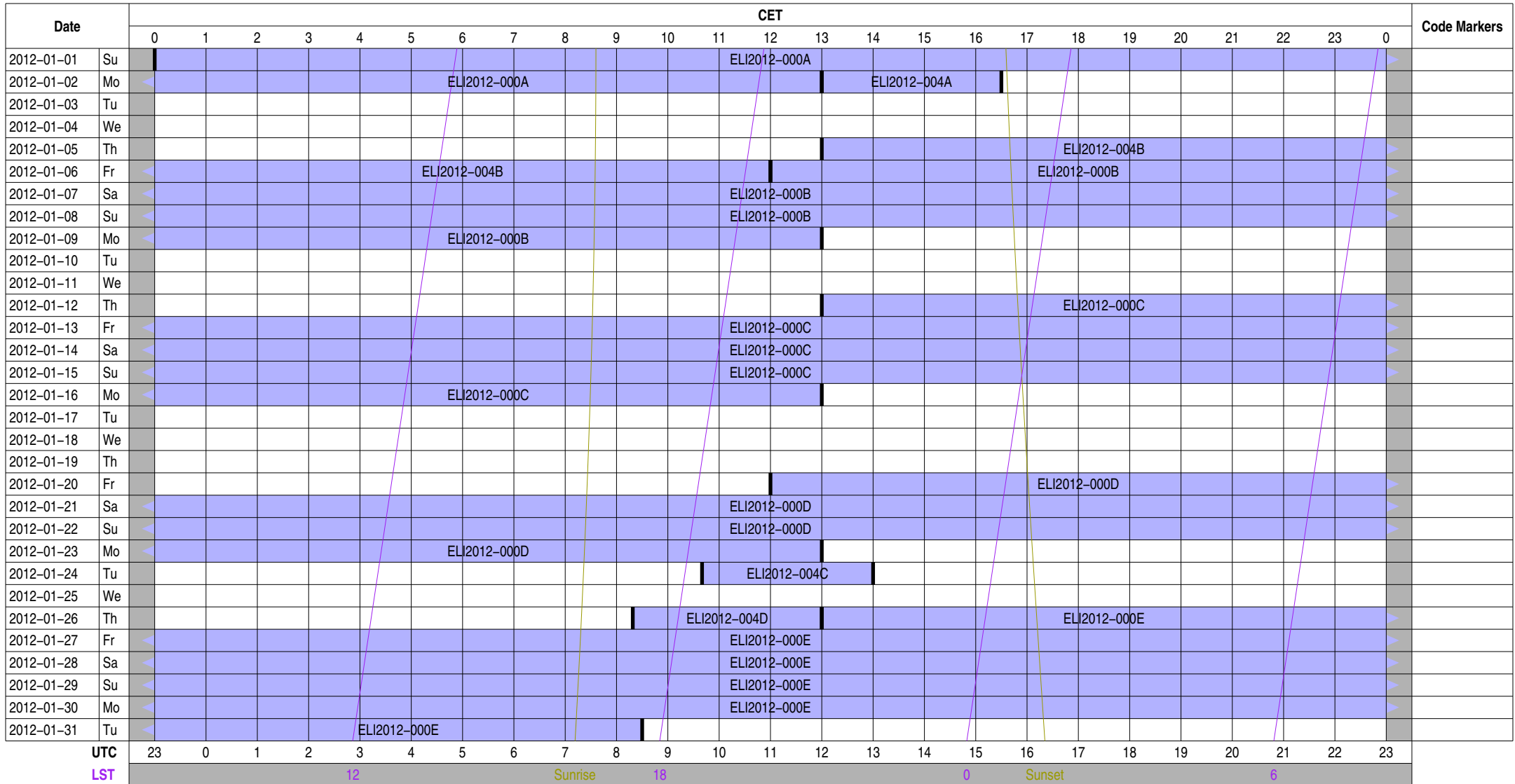
Color Meanings

Science A (Astrometry)	Science N (AGN)	Test Observation	Juelich Mode
Science C (Cosmology)	Science O (Other)	Maintenance Mode	Piggyback Control
Science E (Extragalactic)	Science P (Pulsar)	ILT Mode	Piggyback Without Control
Science G (Galactic)	Science R (Cosmic Rays)	Effelsberg Mode	Experiment Warning
Science H (Ionosphere)	Science S (Solar System)	GLOW Mode	Override Possible

Observing Plan for Transient Buffer Boards

MPIfR Effelsberg LOFAR Station

2012-01-01 through 2012-01-31



Normal Experiment Code Markers

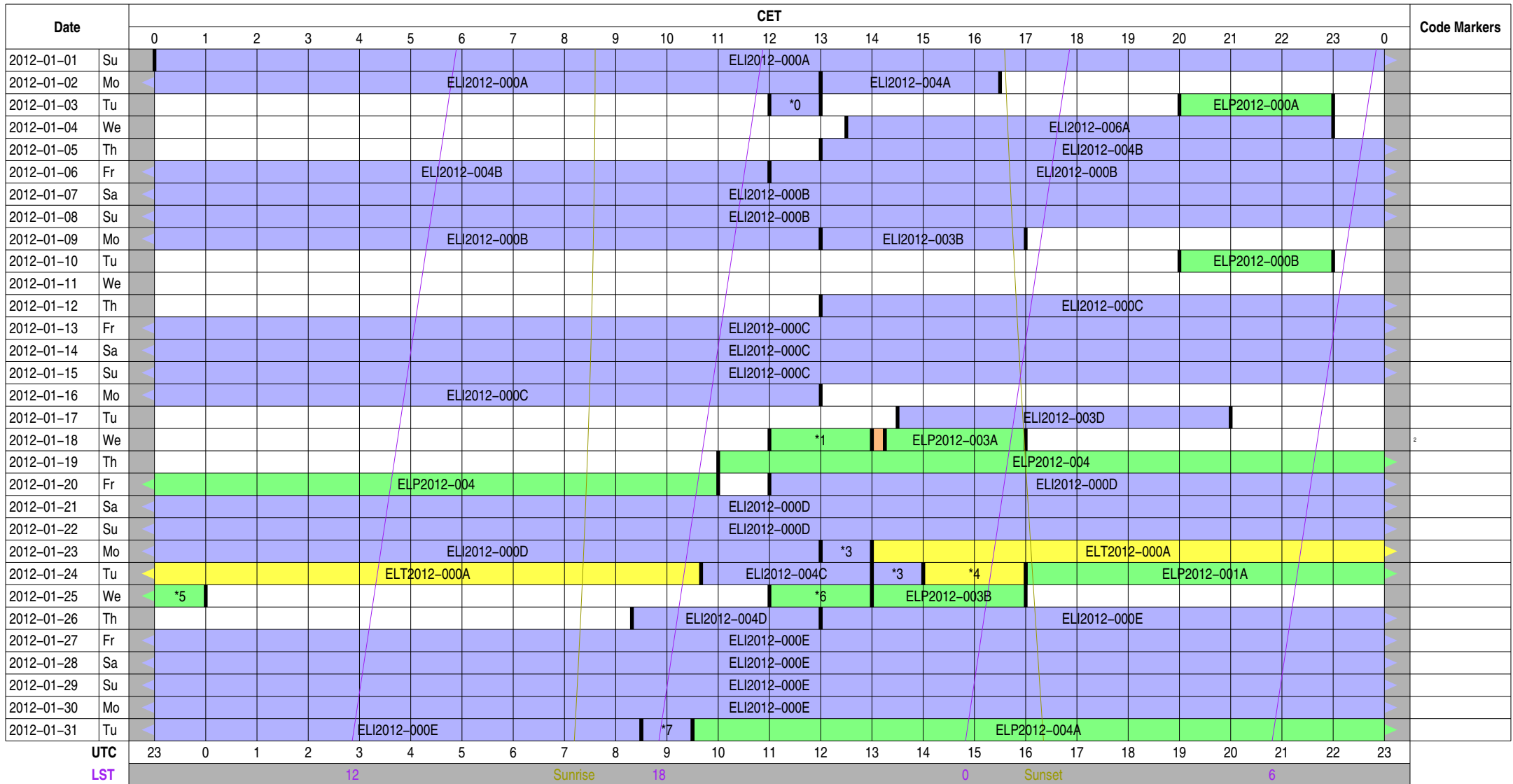
Other Experiment Code Markers

Color Meanings

Science A (Astrometry)	Science N (AGN)	Test Observation	Juelich Mode
Science C (Cosmology)	Science O (Other)	Maintenance Mode	Piggyback Control
Science E (Extragalactic)	Science P (Pulsar)	ILT Mode	Piggyback Without Control
Science G (Galactic)	Science R (Cosmic Rays)	Effelsberg Mode	Experiment Warning
Science H (Ionosphere)	Science S (Solar System)	GLOW Mode	Override Possible

Observing Plan for HBA MPIfR Effelsberg LOFAR Station 2012-01-01 through 2012-01-31

For any publication based on observations with the Effelsberg LOFAR station, please use the following acknowledgment: "Based on observations made with the Effelsberg LOFAR station of the Max-Planck-Institut für Radioastronomie (MPIfR) at Effelsberg."



Normal Experiment Code Markers

0	ELI2012-003A	5	ELP2012-001A
1	ELO2012-000A	6	ELO2012-000C
2	ELM2012-002A	7	ELI2012-003H
3	ELI2012-003F		
4	ELT2012-000A		

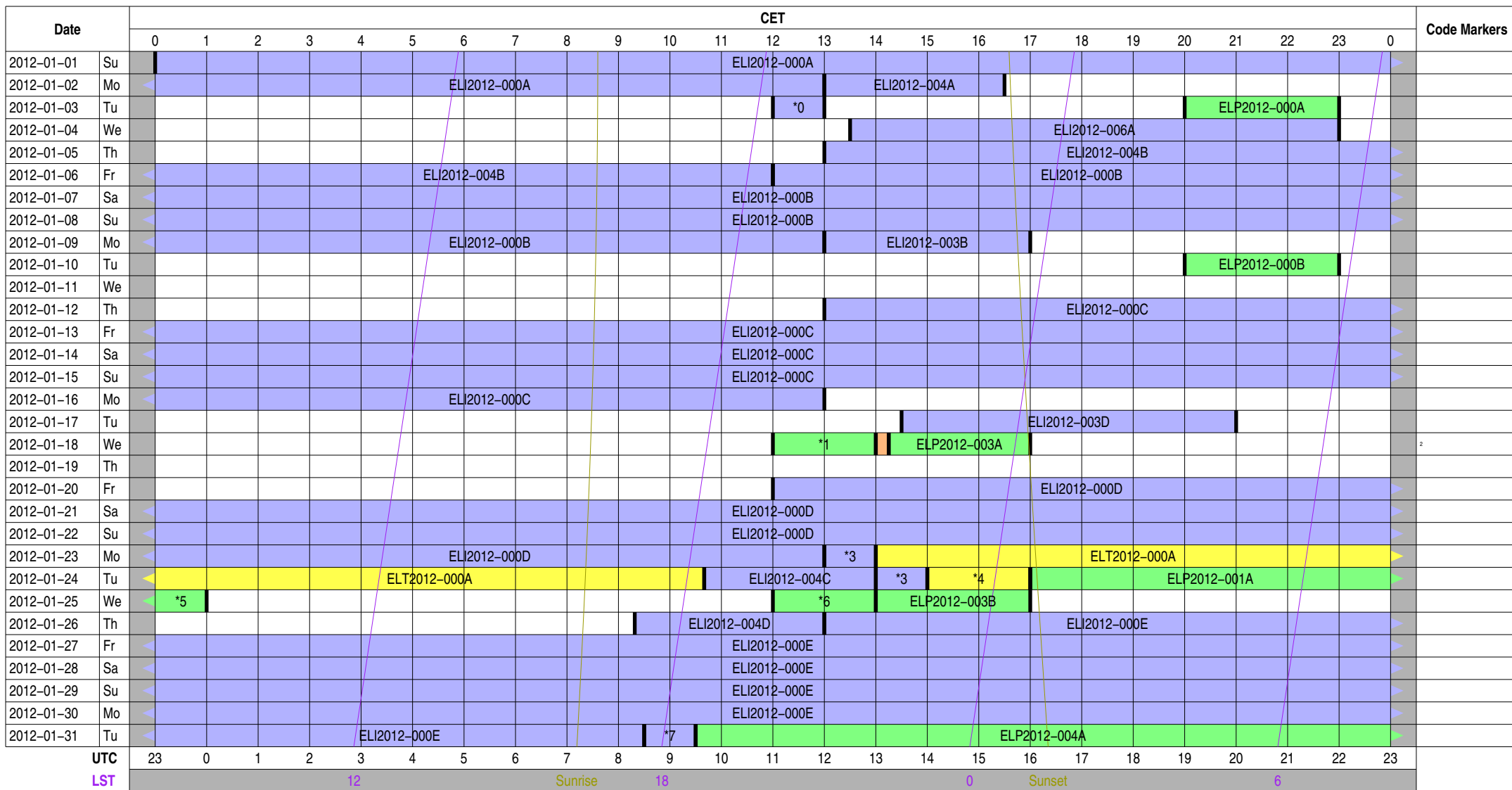
Other Experiment Code Markers

Color Meanings

Science A (Astrometry)	Science N (AGN)	Test Observation	Juelich Mode
Science C (Cosmology)	Science O (Other)	Maintenance Mode	Piggyback Control
Science E (Extragalactic)	Science P (Pulsar)	ILT Mode	Piggyback Without Control
Science G (Galactic)	Science R (Cosmic Rays)	Effelsberg Mode	Experiment Warning
Science H (Ionosphere)	Science S (Solar System)	GLOW Mode	Override Possible

Observing Plan for Low Band High (LBA) MPIfR Effelsberg LOFAR Station 2012-01-01 through 2012-01-31

For any publication based on observations with the Effelsberg LOFAR station, please use the following acknowledgment: "Based on observations made with the Effelsberg LOFAR station of the Max-Planck-Institut für Radioastronomie (MPIfR) at Effelsberg."



Normal Experiment Code Markers

0	ELI2012-003A	5	ELP2012-001A
1	ELO2012-000A	6	ELO2012-000C
2	ELM2012-002A	7	ELI2012-003H
3	ELI2012-003F		
4	ELT2012-000A		

Other Experiment Code Markers

Color Meanings

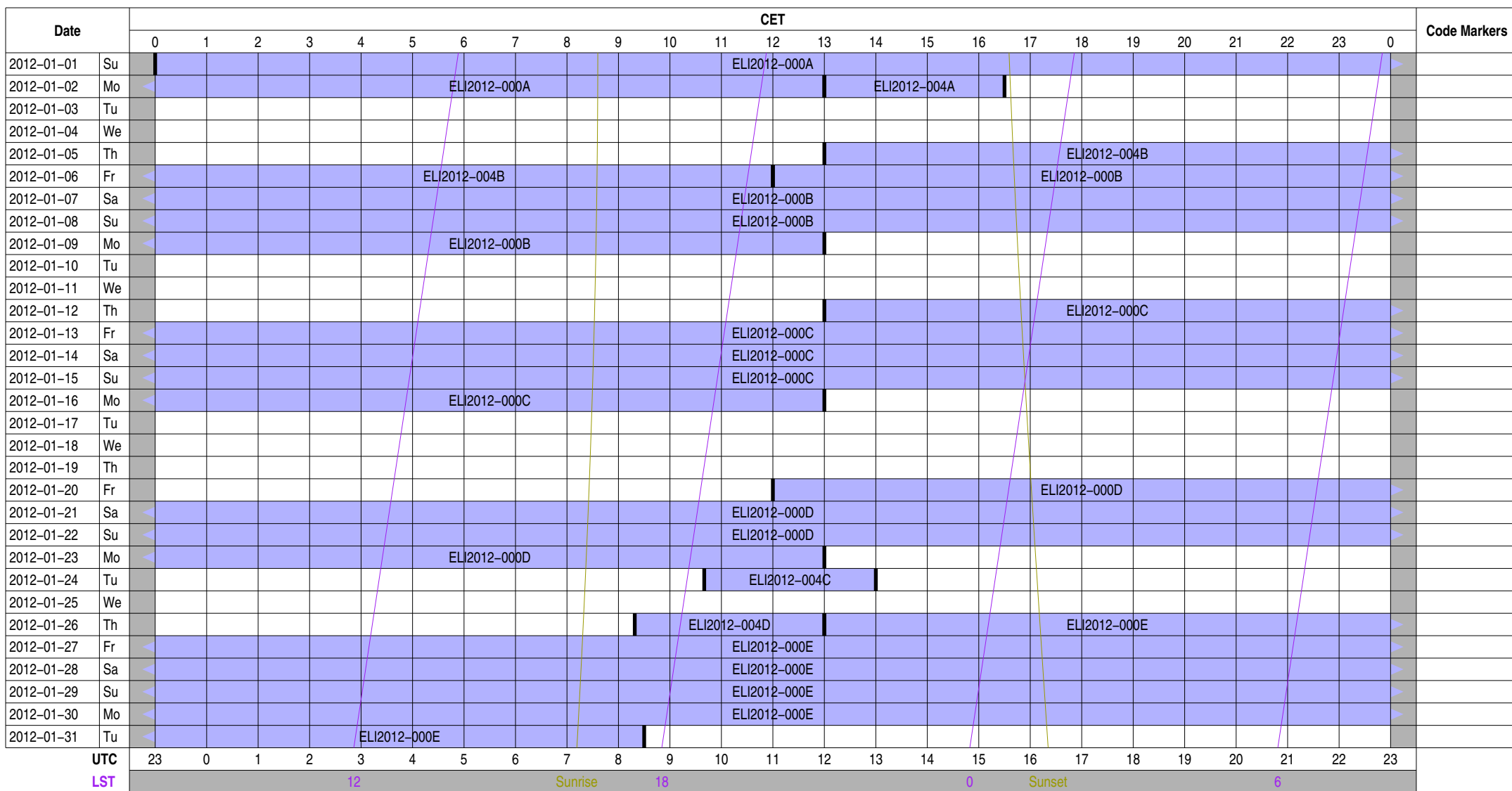
Science A (Astrometry)	Science N (AGN)	Test Observation	Juelich Mode
Science C (Cosmology)	Science O (Other)	Maintenance Mode	Piggyback Control
Science E (Extragalactic)	Science P (Pulsar)	ILT Mode	Piggyback Without Control
Science G (Galactic)	Science R (Cosmic Rays)	Effelsberg Mode	Experiment Warning
Science H (Ionosphere)	Science S (Solar System)	GLOW Mode	Override Possible

Observing Plan for Low Band Low, Unused Inputs

MPIfR Effelsberg LOFAR Station

2012-01-01 through 2012-01-31

For any publication based on observations with the Effelsberg LOFAR station, please use the following acknowledgment: "Based on observations made with the Effelsberg LOFAR station of the Max-Planck-Institut für Radioastronomie (MPIfR) at Effelsberg."



Normal Experiment Code Markers

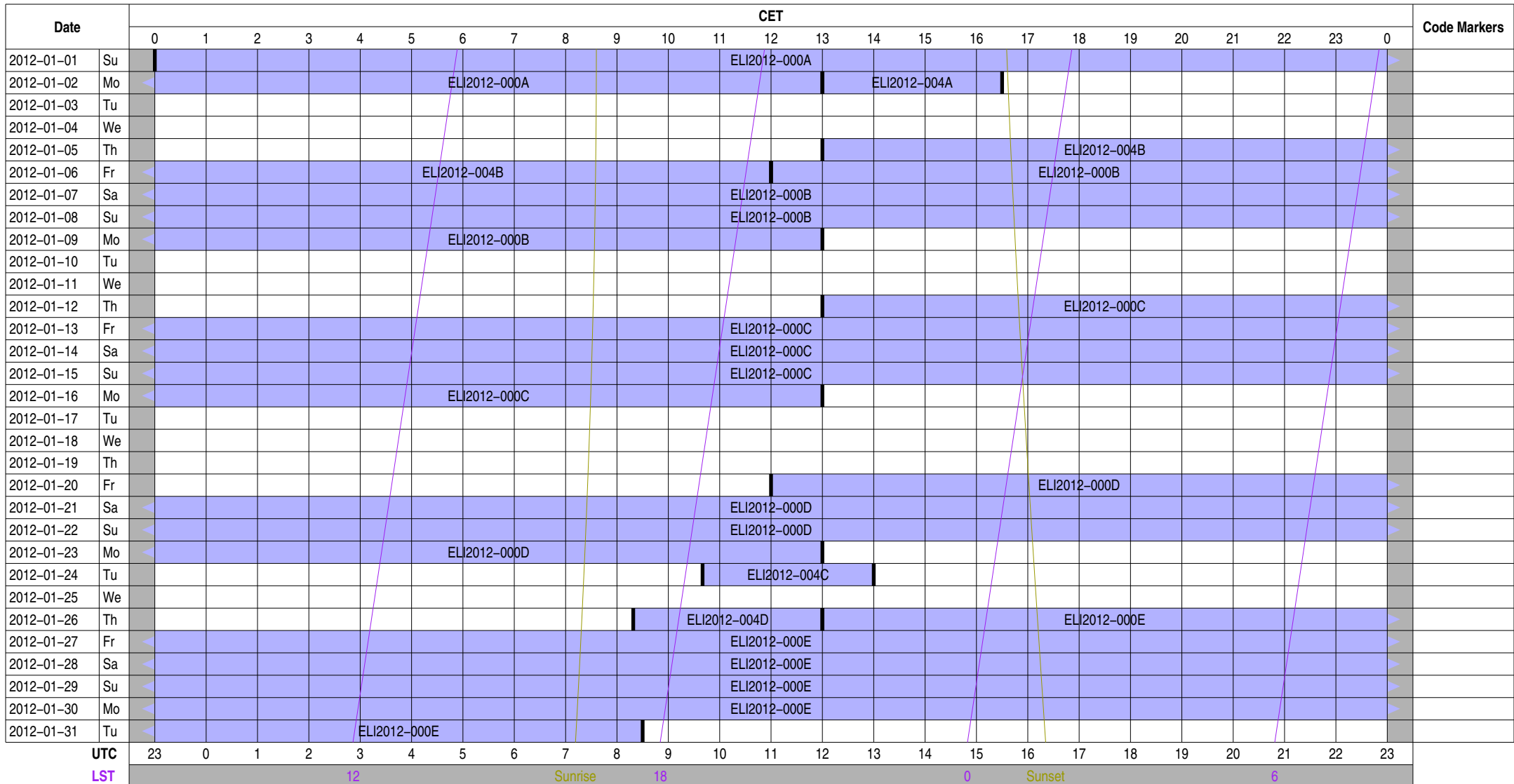
Other Experiment Code Markers

Color Meanings

Science A (Astrometry)	Science N (AGN)	Test Observation	Juelich Mode
Science C (Cosmology)	Science O (Other)	Maintenance Mode	Piggyback Control
Science E (Extragalactic)	Science P (Pulsar)	ILT Mode	Piggyback Without Control
Science G (Galactic)	Science R (Cosmic Rays)	Effelsberg Mode	Experiment Warning
Science H (Ionosphere)	Science S (Solar System)	GLOW Mode	Override Possible

Observing Plan for Station Interferometer MPIfR Effelsberg LOFAR Station 2012-01-01 through 2012-01-31

For any publication based on observations with the
 Effelsberg LOFAR station, please use the following
 acknowledgment: "Based on observations made with the
 Effelsberg LOFAR station of the Max-Planck-Institut
 für Radioastronomie (MPIfR) at Effelsberg."



Normal Experiment Code Markers

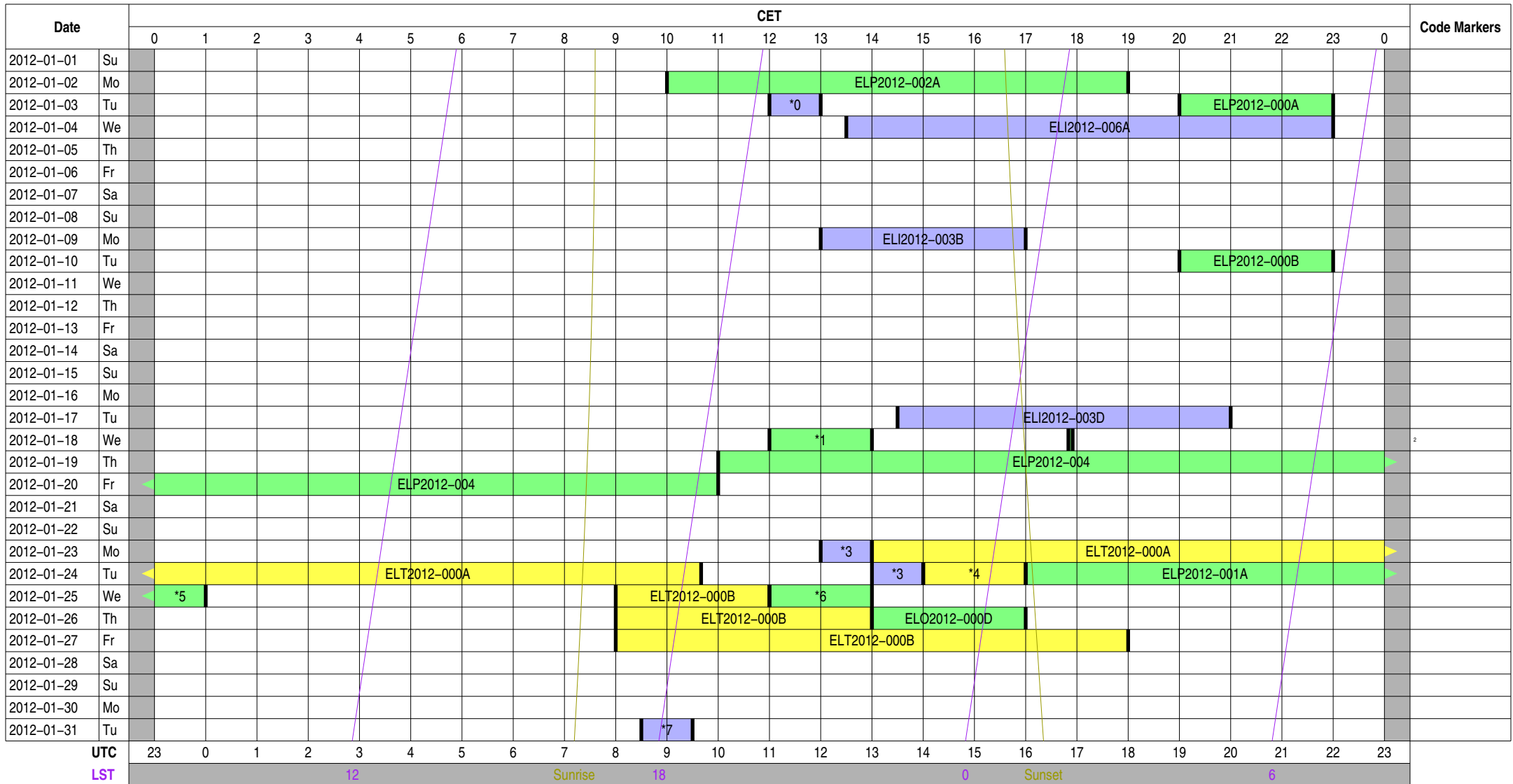
Other Experiment Code Markers

Color Meanings

- | | | | |
|---------------------------|--------------------------|------------------|---------------------------|
| Science A (Astrometry) | Science N (AGN) | Test Observation | Juelich Mode |
| Science C (Cosmology) | Science O (Other) | Maintenance Mode | Piggyback Control |
| Science E (Extragalactic) | Science P (Pulsar) | ILT Mode | Piggyback Without Control |
| Science G (Galactic) | Science R (Cosmic Rays) | Effelsberg Mode | Experiment Warning |
| Science H (Ionosphere) | Science S (Solar System) | GLOW Mode | Override Possible |

Observing Plan for lofar1 Computer MPIfR Effelsberg LOFAR Station 2012-01-01 through 2012-01-31

For any publication based on observations with the Effelsberg LOFAR station, please use the following acknowledgment: "Based on observations made with the Effelsberg LOFAR station of the Max-Planck-Institut für Radioastronomie (MPIfR) at Effelsberg."



Normal Experiment Code Markers

0	ELI2012-003A	5	ELP2012-001A
1	ELO2012-000A	6	ELO2012-000C
2	ELP2012-002C	7	ELI2012-003H
3	ELI2012-003F		
4	ELT2012-000A		

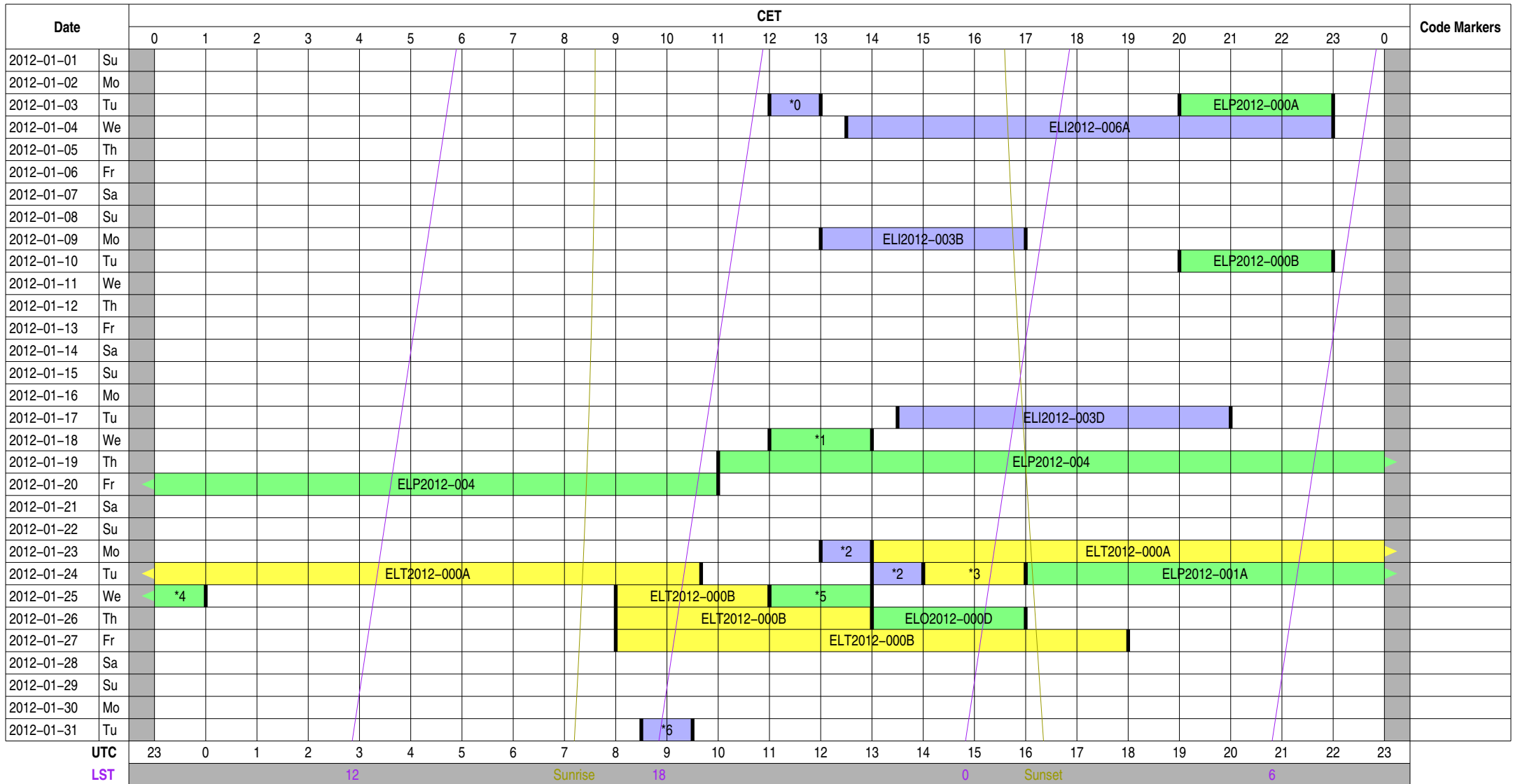
Other Experiment Code Markers

Color Meanings

Science A (Astrometry)	Science N (AGN)	Test Observation	Juelich Mode
Science C (Cosmology)	Science O (Other)	Maintenance Mode	Piggyback Control
Science E (Extragalactic)	Science P (Pulsar)	ILT Mode	Piggyback Without Control
Science G (Galactic)	Science R (Cosmic Rays)	Effelsberg Mode	Experiment Warning
Science H (Ionosphere)	Science S (Solar System)	GLOW Mode	Override Possible

Observing Plan for lofar2 Computer MPIfr Effelsberg LOFAR Station 2012-01-01 through 2012-01-31

For any publication based on observations with the Effelsberg LOFAR station, please use the following acknowledgment: "Based on observations made with the Effelsberg LOFAR station of the Max-Planck-Institut für Radioastronomie (MPIfr) at Effelsberg."



Normal Experiment Code Markers

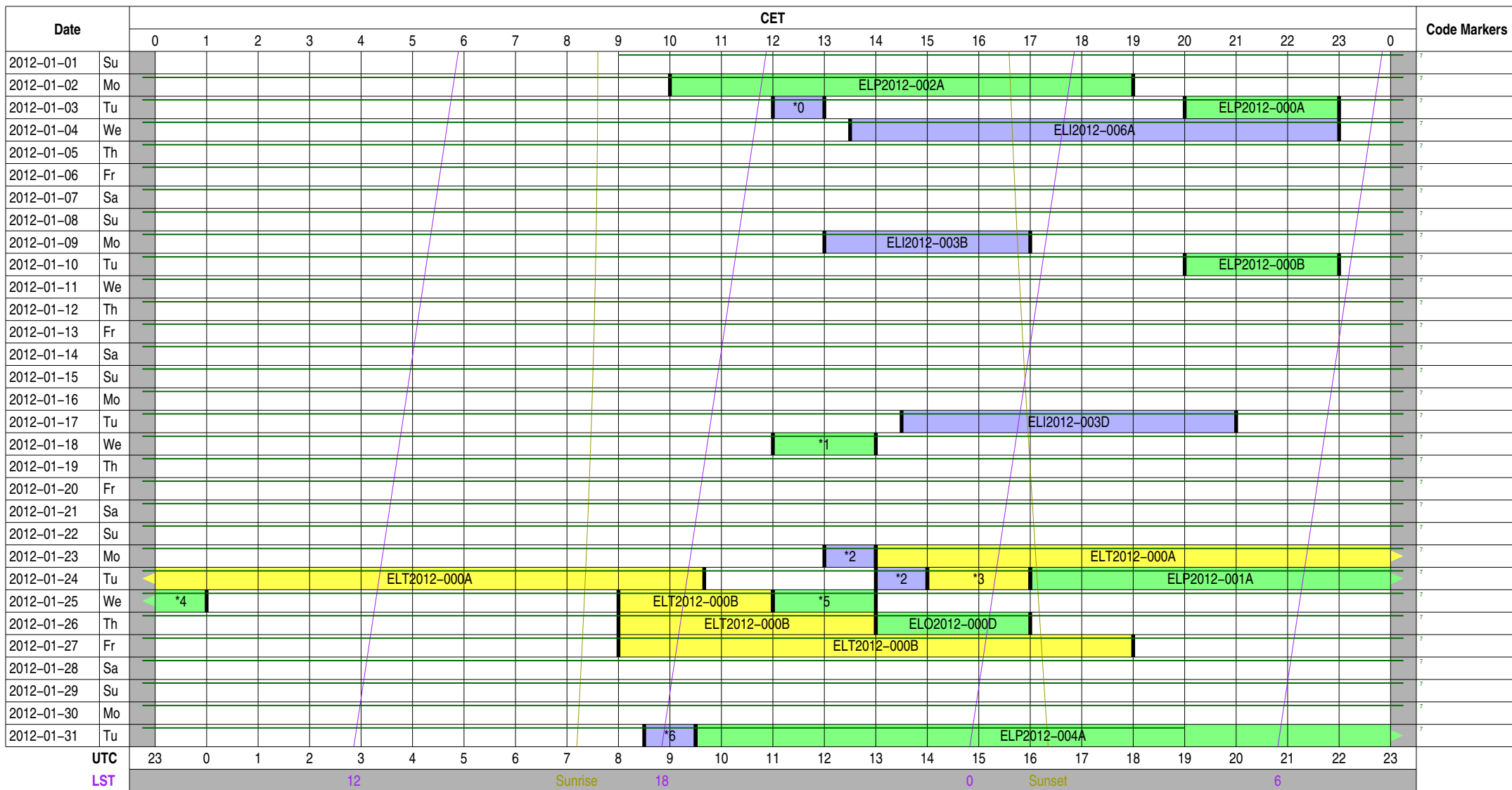
0	ELI2012-003A	5	ELO2012-000C
1	ELO2012-000A	6	ELI2012-003H
2	ELI2012-003F		
3	ELT2012-000A		
4	ELP2012-001A		

Other Experiment Code Markers

Color Meanings

Science A (Astrometry)	Science N (AGN)	Test Observation	Juelich Mode
Science C (Cosmology)	Science O (Other)	Maintenance Mode	Piggyback Control
Science E (Extragalactic)	Science P (Pulsar)	ILT Mode	Piggyback Without Control
Science G (Galactic)	Science R (Cosmic Rays)	Effelsberg Mode	Experiment Warning
Science H (Ionosphere)	Science S (Solar System)	GLOW Mode	Override Possible

Observing Plan for lofar3 Computer MPIfR Effelsberg LOFAR Station 2012-01-01 through 2012-01-31



Normal Experiment Code Markers

0	ELI2012-003A	5	ELO2012-000C
1	ELO2012-000A	6	ELI2012-003H
2	ELI2012-003F		
3	ELT2012-000A		
4	ELP2012-001A		

Other Experiment Code Markers

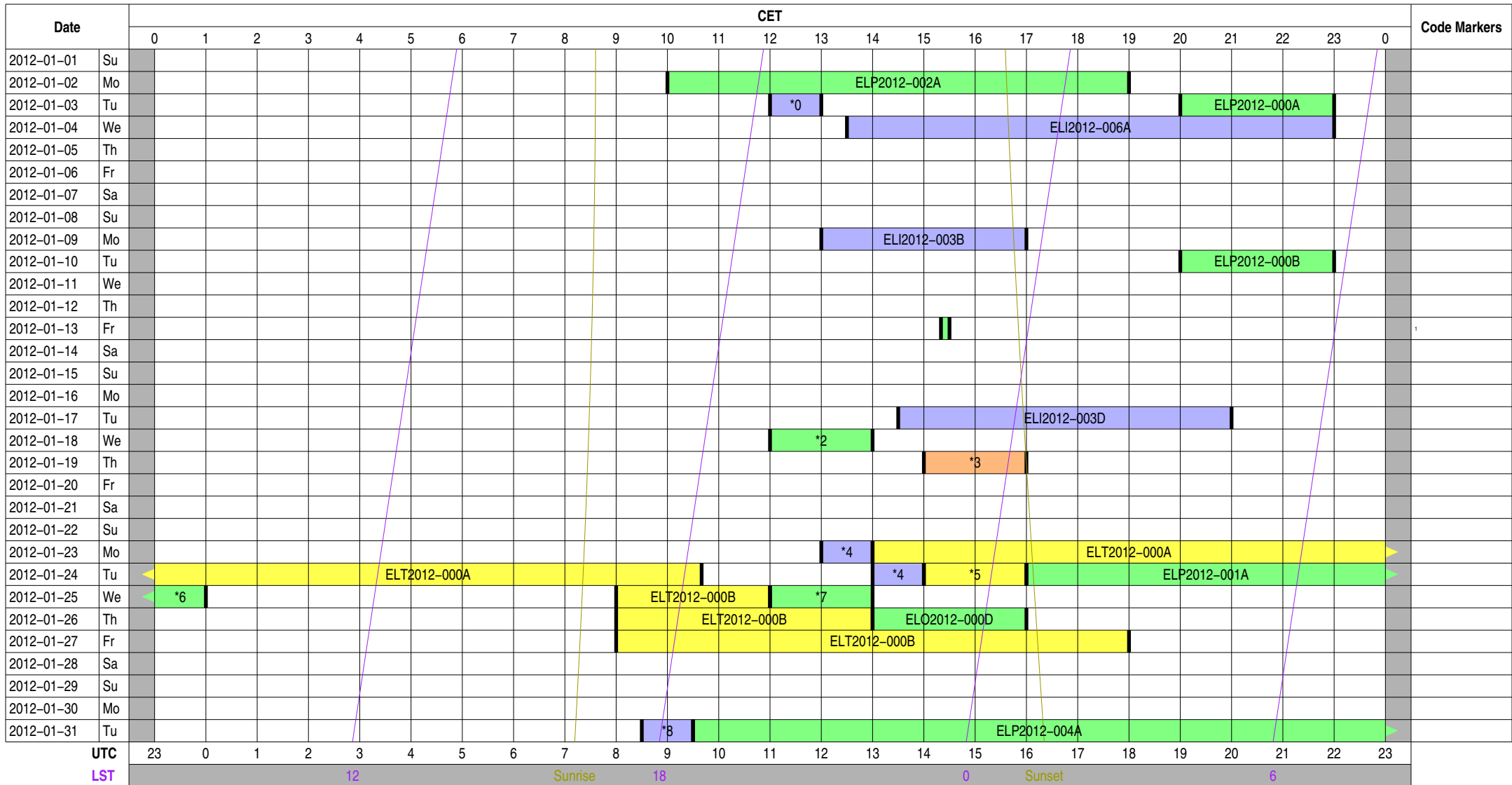
7	ELP2012-002AA
---	---------------

Color Meanings

Science A (Astrometry)	Science N (AGN)	Test Observation	Juelich Mode
Science C (Cosmology)	Science O (Other)	Maintenance Mode	Piggyback Control
Science E (Extragalactic)	Science P (Pulsar)	ILT Mode	Piggyback Without Control
Science G (Galactic)	Science R (Cosmic Rays)	Effelsberg Mode	Experiment Warning
Science H (Ionosphere)	Science S (Solar System)	GLOW Mode	Override Possible

Observing Plan for lofar4 Computer MPIfR Effelsberg LOFAR Station 2012-01-01 through 2012-01-31

For any publication based on observations with the Effelsberg LOFAR station, please use the following acknowledgment: "Based on observations made with the Effelsberg LOFAR station of the Max-Planck-Institut für Radioastronomie (MPIfR) at Effelsberg."



Normal Experiment Code Markers

0	ELI2012-003A	5	ELT2012-000A
1	ELP2012-002B	6	ELP2012-001A
2	ELO2012-000A	7	ELO2012-000C
3	ELM2012-009	8	ELI2012-003H
4	ELI2012-003F		

Other Experiment Code Markers

Color Meanings

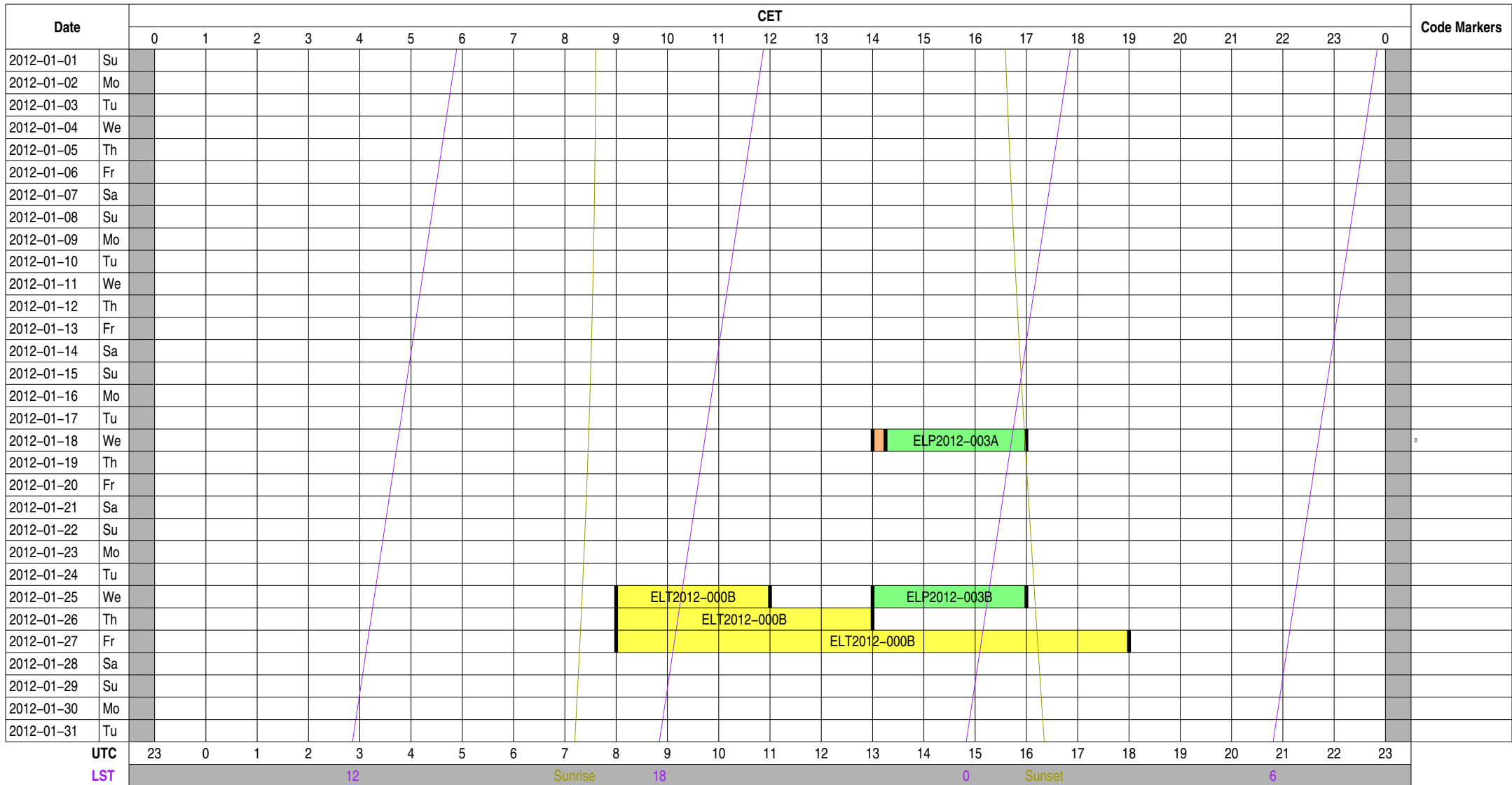
Science A (Astrometry)	Science N (AGN)	Test Observation	Juelich Mode
Science C (Cosmology)	Science O (Other)	Maintenance Mode	Piggyback Control
Science E (Extragalactic)	Science P (Pulsar)	ILT Mode	Piggyback Without Control
Science G (Galactic)	Science R (Cosmic Rays)	Effelsberg Mode	Experiment Warning
Science H (Ionosphere)	Science S (Solar System)	GLOW Mode	Override Possible

Observing Plan for Iofar1a Pulsar Computer

MPIfR Effelsberg LOFAR Station

2012-01-01 through 2012-01-31

For any publication based on observations with the Effelsberg LOFAR station, please use the following acknowledgment: "Based on observations made with the Effelsberg LOFAR station of the Max-Planck-Institut für Radioastronomie (MPIfR) at Effelsberg."



Normal Experiment Code Markers

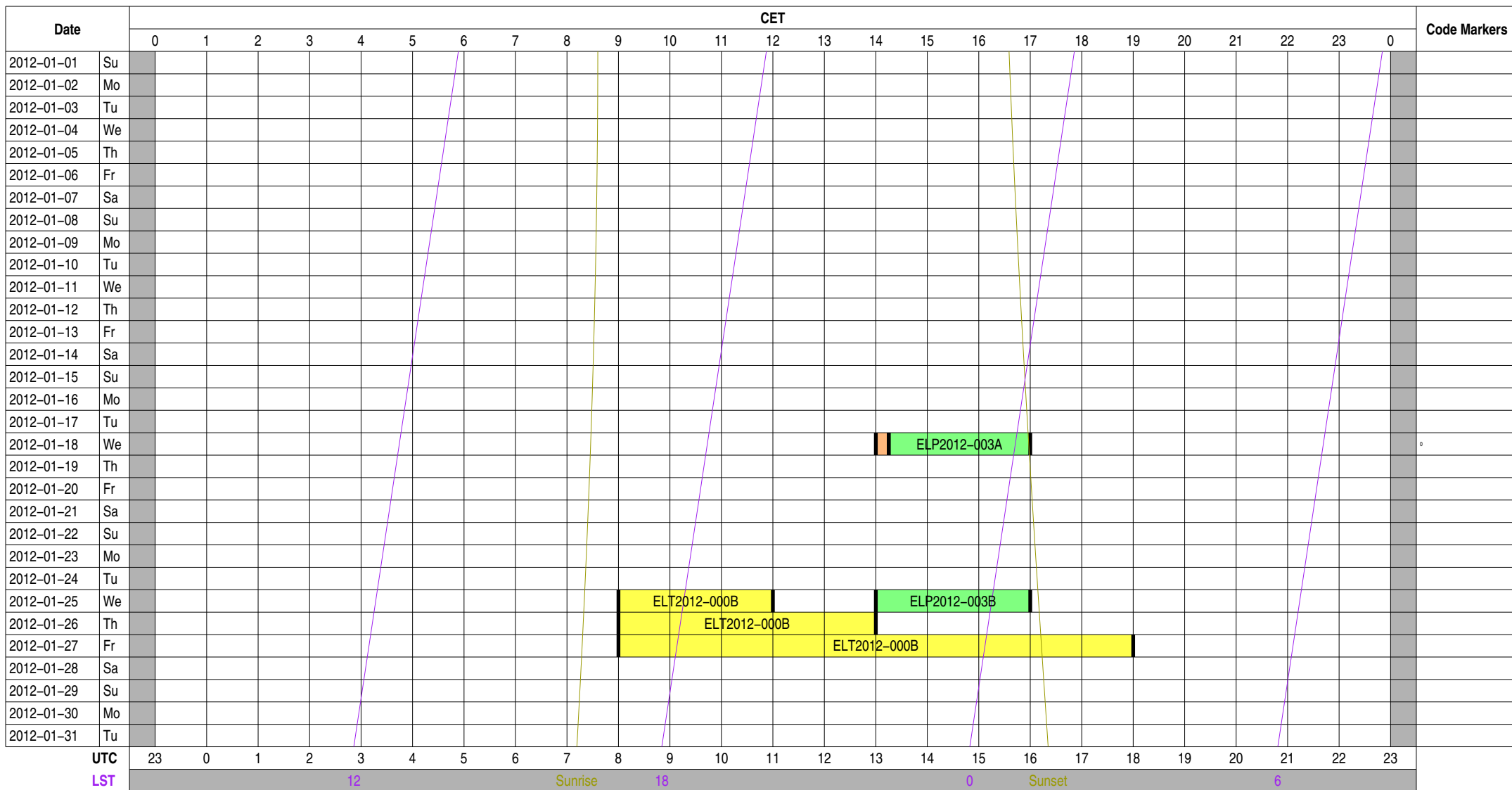
0 ELM2012-002A

Other Experiment Code Markers

Color Meanings

Science A (Astrometry)	Science N (AGN)	Test Observation	Juelich Mode
Science C (Cosmology)	Science O (Other)	Maintenance Mode	Piggyback Control
Science E (Extragalactic)	Science P (Pulsar)	ILT Mode	Piggyback Without Control
Science G (Galactic)	Science R (Cosmic Rays)	Effelsberg Mode	Experiment Warning
Science H (Ionosphere)	Science S (Solar System)	GLOW Mode	Override Possible

Observing Plan for Iofar2a Pulsar Computer MPIfR Effelsberg LOFAR Station 2012-01-01 through 2012-01-31



Normal Experiment Code Markers

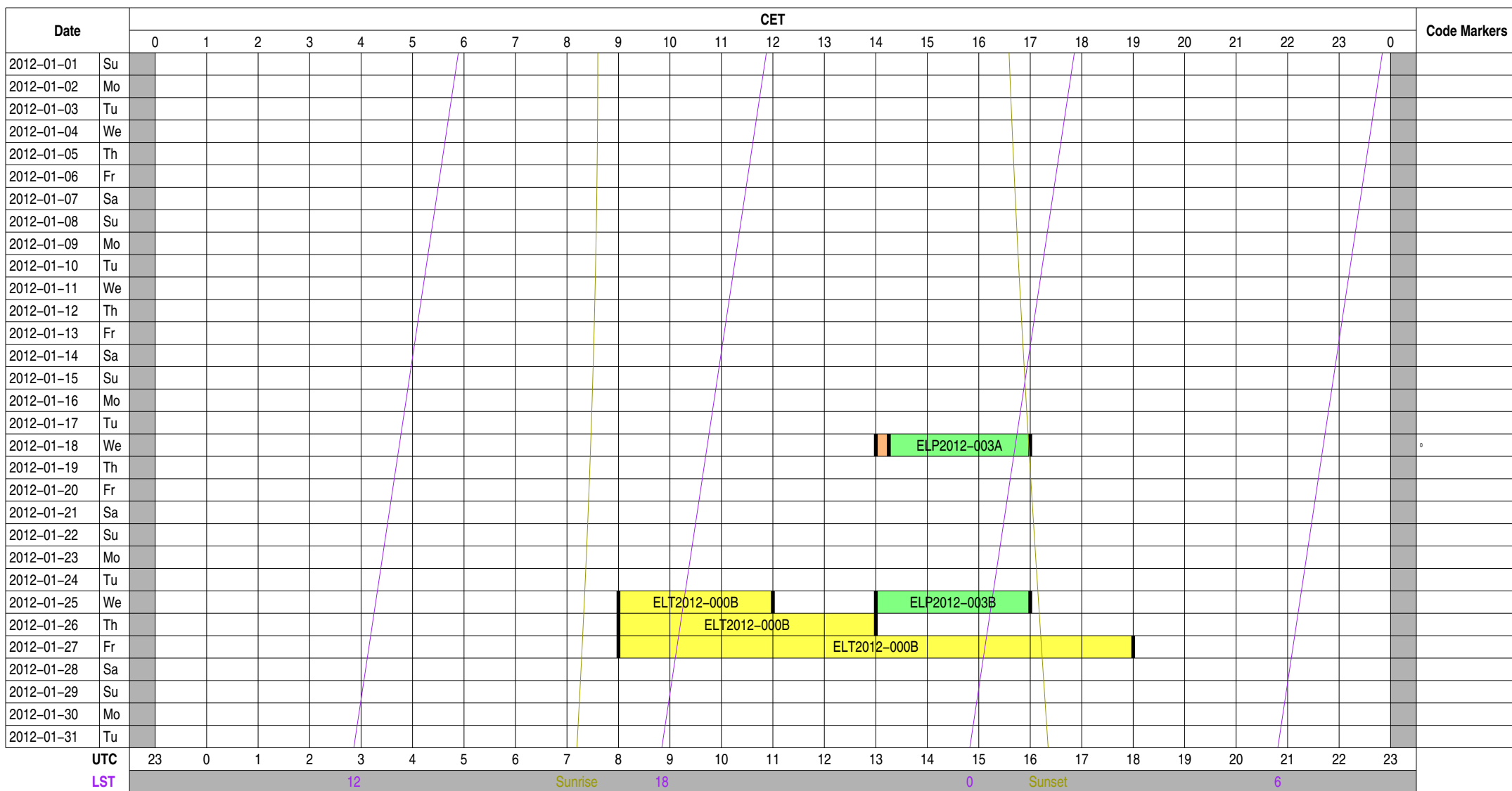
0 ELM2012-002A

Other Experiment Code Markers

Color Meanings

- Science A (Astrometry)
- Science C (Cosmology)
- Science E (Extragalactic)
- Science G (Galactic)
- Science H (Ionosphere)
- Science N (AGN)
- Science O (Other)
- Science P (Pulsar)
- Science R (Cosmic Rays)
- Science S (Solar System)
- Test Observation
- Maintenance Mode
- ILT Mode
- Effelsberg Mode
- GLOW Mode
- Juelich Mode
- Piggyback Control
- Piggyback Without Control
- Experiment Warning
- Override Possible

Observing Plan for Iofar3a Pulsar Computer MPIfR Effelsberg LOFAR Station 2012-01-01 through 2012-01-31



Normal Experiment Code Markers

0 ELM2012-002A

Other Experiment Code Markers

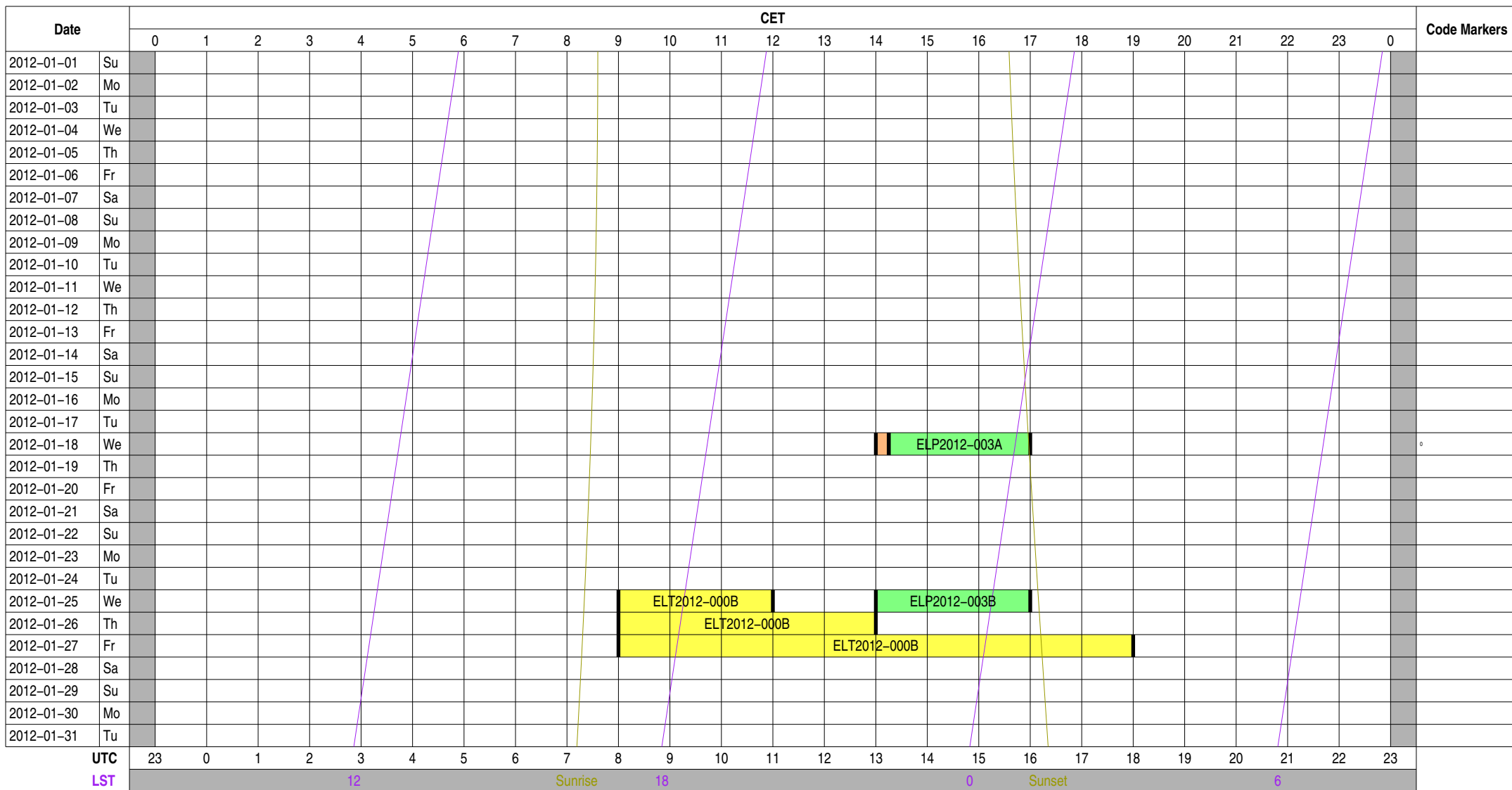
Color Meanings

Science A (Astrometry)	Science N (AGN)	Test Observation	Juelich Mode
Science C (Cosmology)	Science O (Other)	Maintenance Mode	Piggyback Control
Science E (Extragalactic)	Science P (Pulsar)	ILT Mode	Piggyback Without Control
Science G (Galactic)	Science R (Cosmic Rays)	Effelsberg Mode	Experiment Warning
Science H (Ionosphere)	Science S (Solar System)	GLOW Mode	Override Possible

Observing Plan for Iofar4a Pulsar Computer

MPIfR Effelsberg LOFAR Station

2012-01-01 through 2012-01-31



Normal Experiment Code Markers

0 ELM2012-002A

Other Experiment Code Markers

Color Meanings

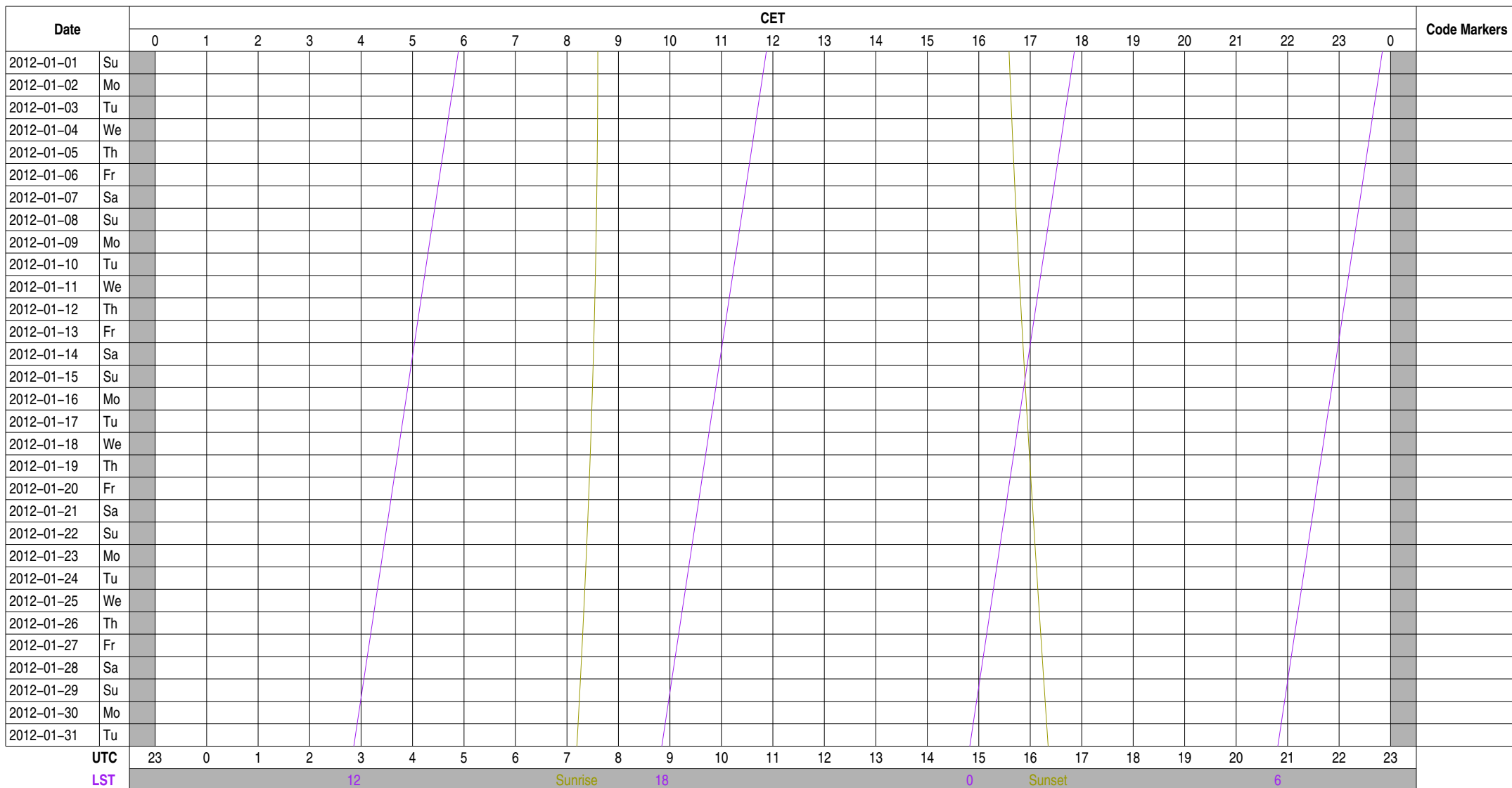
Science A (Astrometry)	Science N (AGN)	Test Observation	Juelich Mode
Science C (Cosmology)	Science O (Other)	Maintenance Mode	Piggyback Control
Science E (Extragalactic)	Science P (Pulsar)	ILT Mode	Piggyback Without Control
Science G (Galactic)	Science R (Cosmic Rays)	Effelsberg Mode	Experiment Warning
Science H (Ionosphere)	Science S (Solar System)	GLOW Mode	Override Possible

Observing Plan for Iofar1b Recording Computer

MPIfR Effelsberg LOFAR Station

2012-01-01 through 2012-01-31

For any publication based on observations with the Effelsberg LOFAR station, please use the following acknowledgment: "Based on observations made with the Effelsberg LOFAR station of the Max-Planck-Institut für Radioastronomie (MPIfR) at Effelsberg."



Normal Experiment Code Markers

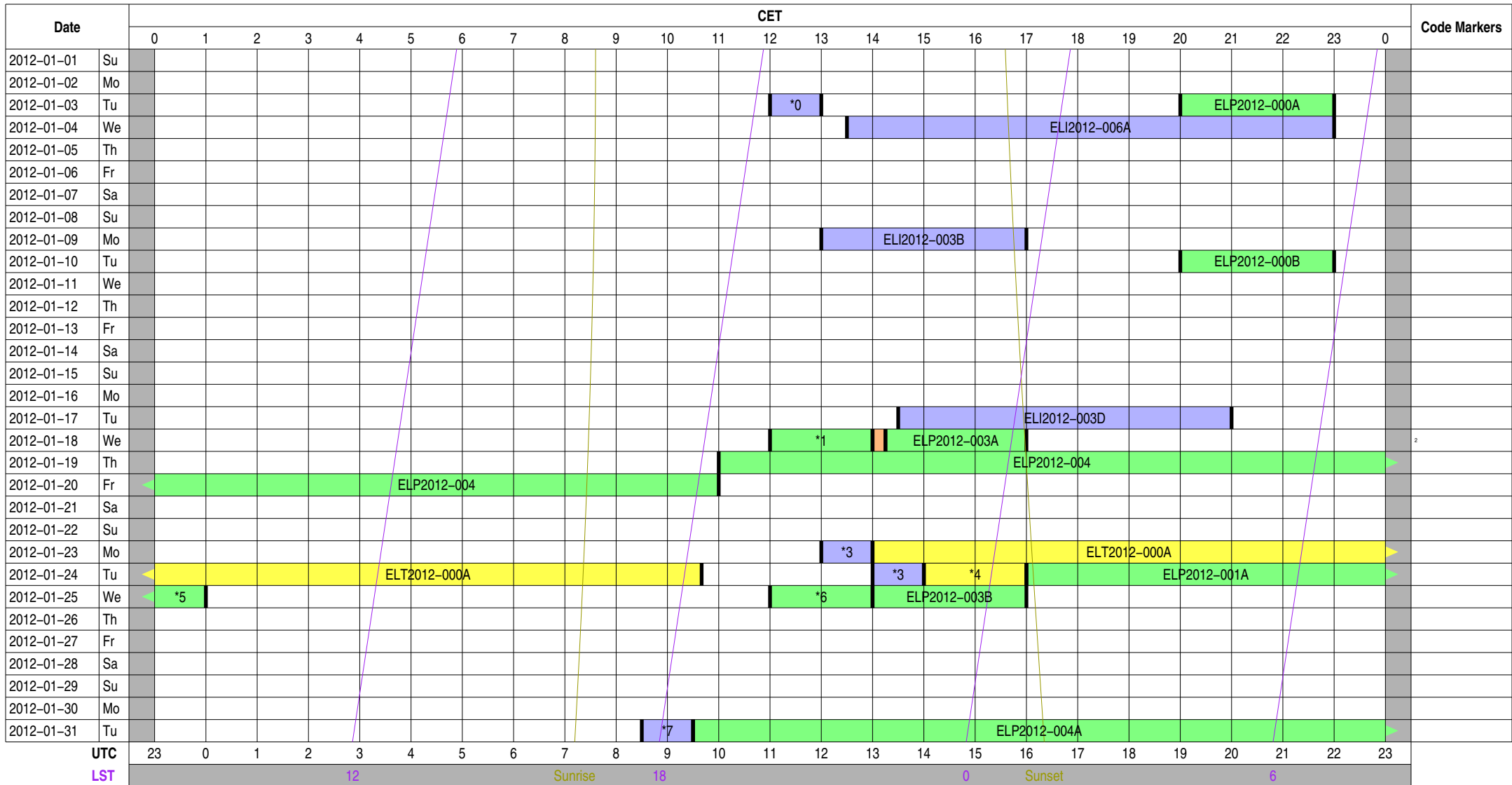
Other Experiment Code Markers

Color Meanings

- | | | | |
|---------------------------|--------------------------|------------------|---------------------------|
| Science A (Astrometry) | Science N (AGN) | Test Observation | Juelich Mode |
| Science C (Cosmology) | Science O (Other) | Maintenance Mode | Piggyback Control |
| Science E (Extragalactic) | Science P (Pulsar) | ILT Mode | Piggyback Without Control |
| Science G (Galactic) | Science R (Cosmic Rays) | Effelsberg Mode | Experiment Warning |
| Science H (Ionosphere) | Science S (Solar System) | GLOW Mode | Override Possible |

Observing Plan for Iofarx Computer MPIfR Effelsberg LOFAR Station 2012-01-01 through 2012-01-31

For any publication based on observations with the Effelsberg LOFAR station, please use the following acknowledgment: "Based on observations made with the Effelsberg LOFAR station of the Max-Planck-Institut für Radioastronomie (MPIfR) at Effelsberg."



Normal Experiment Code Markers

0	ELI2012-003A	5	ELP2012-001A
1	ELO2012-000A	6	ELO2012-000C
2	ELM2012-002A	7	ELI2012-003H
3	ELI2012-003F		
4	ELT2012-000A		

Other Experiment Code Markers

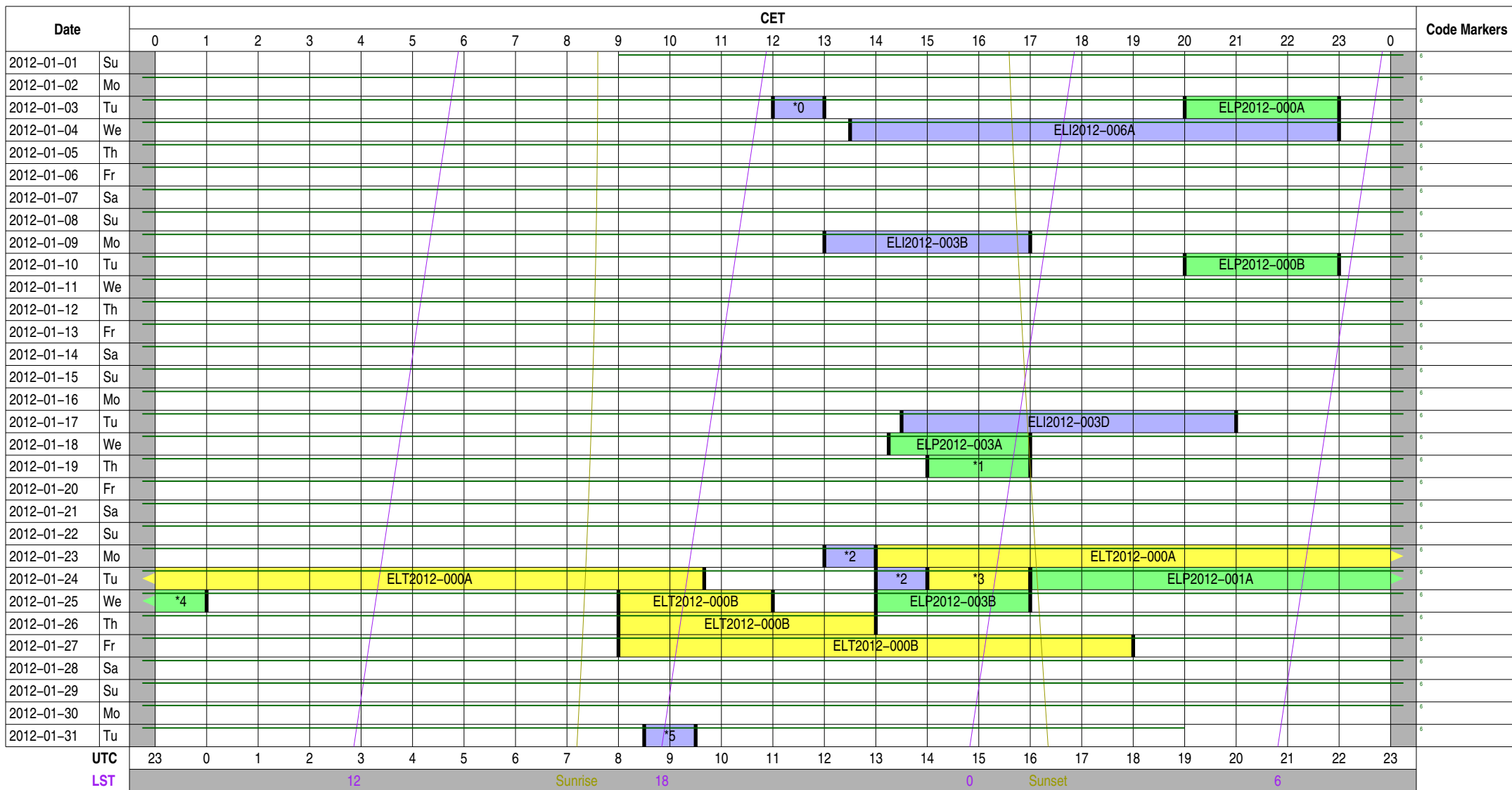
Color Meanings

Science A (Astrometry)	Science N (AGN)	Test Observation	Juelich Mode
Science C (Cosmology)	Science O (Other)	Maintenance Mode	Piggyback Control
Science E (Extragalactic)	Science P (Pulsar)	ILT Mode	Piggyback Without Control
Science G (Galactic)	Science R (Cosmic Rays)	Effelsberg Mode	Experiment Warning
Science H (Ionosphere)	Science S (Solar System)	GLOW Mode	Override Possible

Observing Plan for Iofarsrv Computer

MPIfR Effelsberg LOFAR Station

2012-01-01 through 2012-01-31



Normal Experiment Code Markers

- 0 ELI2012-003A 5 ELI2012-003H
- 1 ELP2011-013A
- 2 ELI2012-003F
- 3 ELT2012-000A
- 4 ELP2012-001A

Other Experiment Code Markers

- 6 ELP2012-002AA

Color Meanings

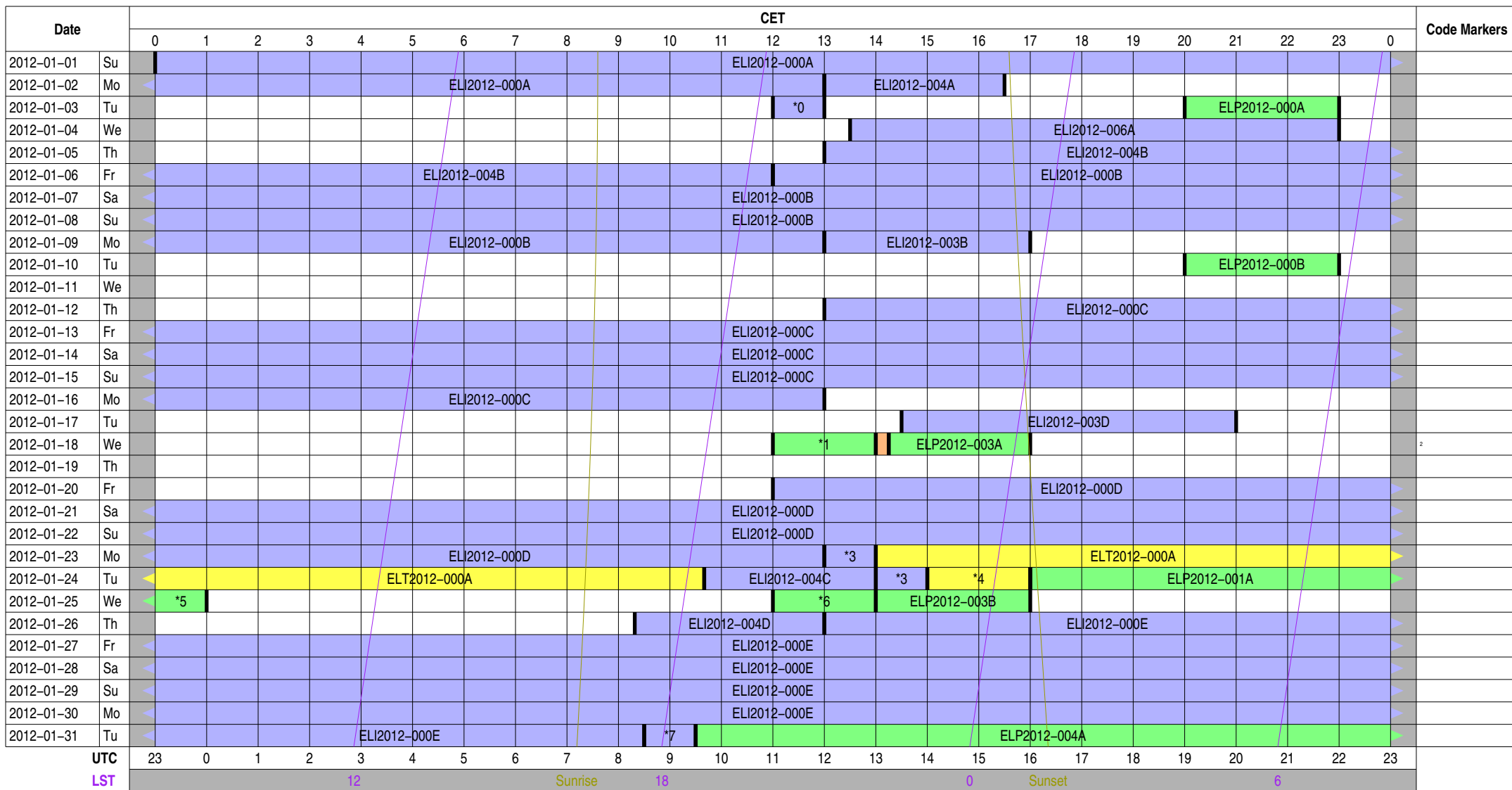
- Science A (Astrometry)
- Science C (Cosmology)
- Science E (Extragalactic)
- Science G (Galactic)
- Science H (Ionosphere)
- Science N (AGN)
- Science O (Other)
- Science P (Pulsar)
- Science R (Cosmic Rays)
- Science S (Solar System)
- Test Observation
- Maintenance Mode
- ILT Mode
- Effelsberg Mode
- GLOW Mode
- Juelich Mode
- Piggyback Control
- Piggyback Without Control
- Experiment Warning
- Override Possible

Observing Plan for LOFAR Fiber Connection

MPIfR Effelsberg LOFAR Station

2012-01-01 through 2012-01-31

For any publication based on observations with the Effelsberg LOFAR station, please use the following acknowledgment: "Based on observations made with the Effelsberg LOFAR station of the Max-Planck-Institut für Radioastronomie (MPIfR) at Effelsberg."



Normal Experiment Code Markers

0	ELI2012-003A	5	ELP2012-001A
1	ELO2012-000A	6	ELO2012-000C
2	ELM2012-002A	7	ELI2012-003H
3	ELI2012-003F		
4	ELT2012-000A		

Other Experiment Code Markers

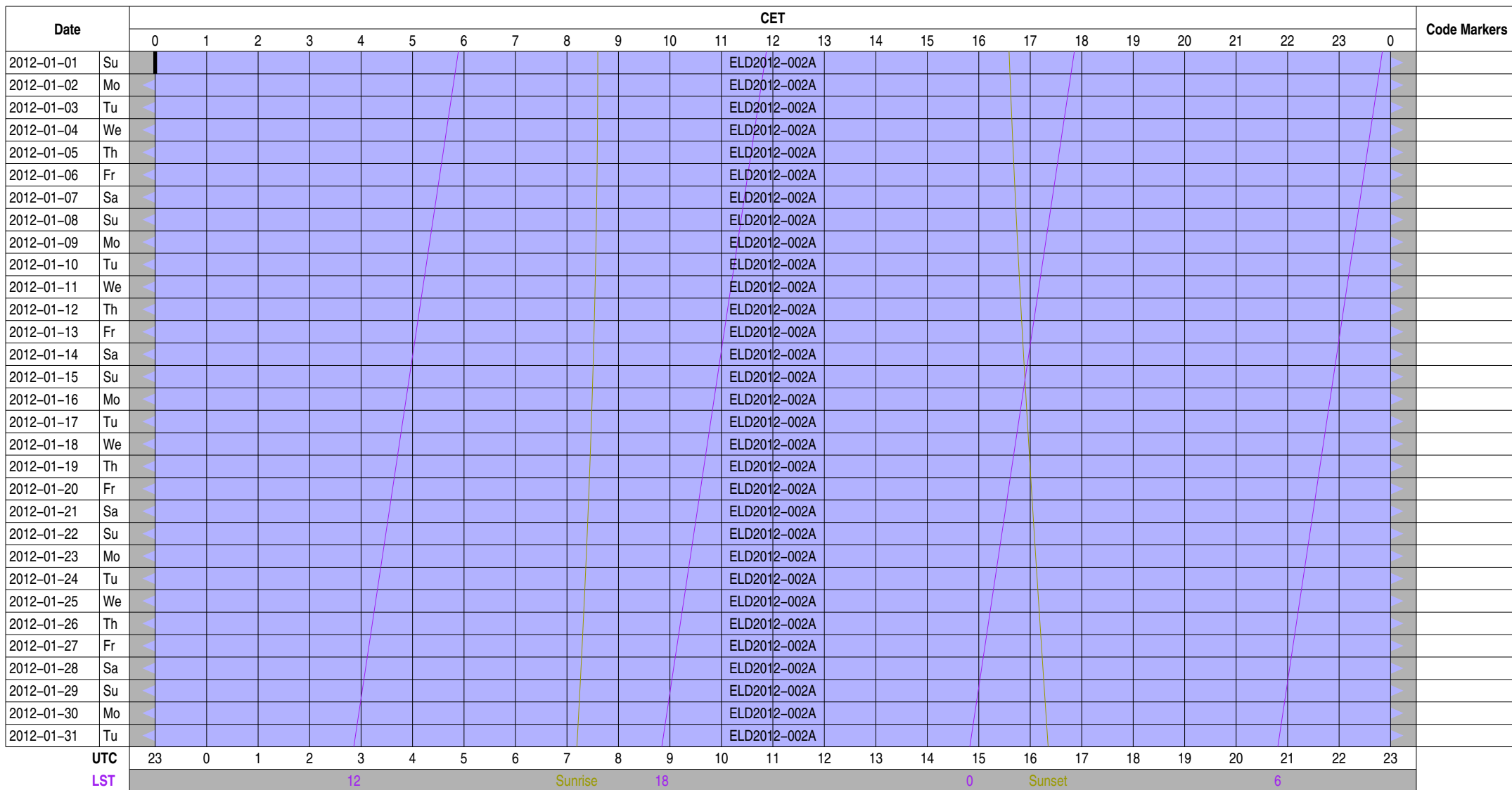
Color Meanings

Science A (Astrometry)	Science N (AGN)	Test Observation	Juelich Mode
Science C (Cosmology)	Science O (Other)	Maintenance Mode	Piggyback Control
Science E (Extragalactic)	Science P (Pulsar)	ILT Mode	Piggyback Without Control
Science G (Galactic)	Science R (Cosmic Rays)	Effelsberg Mode	Experiment Warning
Science H (Ionosphere)	Science S (Solar System)	GLOW Mode	Override Possible

Observing Plan for Operator On-Duty

MPIfR Effelsberg LOFAR Station

2012-01-01 through 2012-01-31



Normal Experiment Code Markers

Other Experiment Code Markers

Color Meanings

- 100 m Operator
- Anderson
- Kuniyoshi
- Homeffer
- Other
- Unknown

Experiment Information for Normal Observations

ELI2011-000	Anderson, ILT Operations	observer@astron.nl	+31 521 595 777	Main ILT Observations, ILT Operations only on-duty 9--17, M
ELI2011-000	Anderson, ILT Operations	observer@astron.nl	+31 521 595 777	Main ILT Observations, ILT Operations only on-duty 9--17, M
ELI2012-000	Anderson, ILT Operations	observer@astron.nl	+31 521 595 777	Main ILT Observations, ILT Operations only on-duty 9--17, M
ELI2012-000	Anderson, ILT Operations	observer@astron.nl	+31 521 595 777	Main ILT Observations, ILT Operations only on-duty 9--17, M
ELI2012-000	Anderson, ILT Operations	observer@astron.nl	+31 521 595 777	Main ILT Observations, ILT Operations only on-duty 9--17, M
ELI2012-000	Anderson, ILT Operations	observer@astron.nl	+31 521 595 777	Main ILT Observations, ILT Operations only on-duty 9--17, M
ELI2012-000	Anderson, ILT Operations	observer@astron.nl	+31 521 595 777	Main ILT Observations, ILT Operations only on-duty 9--17, M
ELI2012-003	Anderson, Kuniyoshi, Horneffer	lofar-ops@mpi-fr-bonn.mpg.de	+49 228 525 356	Handover operations for local to ILT mode
ELI2012-003	Anderson, Kuniyoshi, Horneffer	lofar-ops@mpi-fr-bonn.mpg.de	+49 228 525 356	Handover operations for local to ILT mode
ELI2012-003	Anderson, Kuniyoshi, Horneffer	lofar-ops@mpi-fr-bonn.mpg.de	+49 228 525 356	Handover operations for local to ILT mode
ELI2012-003	Anderson, Kuniyoshi, Horneffer	lofar-ops@mpi-fr-bonn.mpg.de	+49 228 525 356	Handover operations for local to ILT mode
ELI2012-003	Anderson, Kuniyoshi, Horneffer	lofar-ops@mpi-fr-bonn.mpg.de	+49 228 525 356	Handover operations for local to ILT mode
ELI2012-003	Anderson, Kuniyoshi, Horneffer	lofar-ops@mpi-fr-bonn.mpg.de	+49 228 525 356	Handover operations for local to ILT mode
ELI2012-003	Anderson, Kuniyoshi, Horneffer	lofar-ops@mpi-fr-bonn.mpg.de	+49 228 525 356	Handover operations for local to ILT mode
ELI2012-004	Anderson, ILT Operations	observer@astron.nl	+31 521 595 777	ILT FUBAR, ILT Operations only on-duty 9--17, M--F
ELI2012-004	Anderson, ILT Operations	observer@astron.nl	+31 521 595 777	ILT FUBAR, ILT Operations only on-duty 9--17, M--F
ELI2012-004	Anderson, ILT Operations	observer@astron.nl	+31 521 595 777	ILT FUBAR, ILT Operations only on-duty 9--17, M--F
ELI2012-004	Anderson, ILT Operations	observer@astron.nl	+31 521 595 777	ILT FUBAR, ILT Operations only on-duty 9--17, M--F
ELI2012-006	Anderson, Gunst	anderson@mpi-fr-bonn.mpg.de	+49 228 525 356	EF packet loss testing
ELI2012-006	Anderson, Gunst	anderson@mpi-fr-bonn.mpg.de	+49 228 525 356	EF packet loss testing
ELM2012-002	Kuniyoshi	mkuniyos@mpi-fr-bonn.mpg.de	+49 228 525 505	system administration
ELM2012-002	Kuniyoshi	mkuniyos@mpi-fr-bonn.mpg.de	+49 228 525 505	system administration
ELM2012-009	Kraus	akraus@mpi-fr-bonn.mpg.de	+49 2257 301 120	fixing hardware
ELM2012-009	Kraus	akraus@mpi-fr-bonn.mpg.de	+49 2257 301 120	fixing hardware
ELO2012-000	Anderson	anderson@mpi-fr-bonn.mpg.de	+49 1 737 838 125	testing Cas A and Cyg A brightness across calibration table
ELO2012-000	Anderson	anderson@mpi-fr-bonn.mpg.de	+49 1 737 838 125	testing Cas A and Cyg A brightness across calibration table
ELO2012-000	Anderson	anderson@mpi-fr-bonn.mpg.de	+49 1 737 838 125	testing Cas A and Cyg A brightness across calibration table
ELO2012-000	Anderson	anderson@mpi-fr-bonn.mpg.de	+49 1 737 838 125	testing Cas A and Cyg A brightness across calibration table
ELP2011-013	Kuniyoshi	mkuniyos@mpi-fr-bonn.mpg.de	+49 228 525 505	
ELP2011-013	Kuniyoshi	mkuniyos@mpi-fr-bonn.mpg.de	+49 228 525 505	
ELP2012-000	Anderson	anderson@mpi-fr-bonn.mpg.de	+49 1 737 838 125	testing pulsar recording software
ELP2012-000	Anderson	anderson@mpi-fr-bonn.mpg.de	+49 1 737 838 125	testing pulsar recording software
ELP2012-000	Anderson	anderson@mpi-fr-bonn.mpg.de	+49 1 737 838 125	testing pulsar recording software
ELP2012-001	Anderson, Kloeckner, Noutsos, Kuniyoshi, Verbiest,	anderson@mpi-fr-bonn.mpg.de	+49 228 525 356	Pulsar testing with the 100 m 50 cm receiver
ELP2012-001	Anderson, Kloeckner, Noutsos, Kuniyoshi, Verbiest,	anderson@mpi-fr-bonn.mpg.de	+49 228 525 356	Pulsar testing with the 100 m 50 cm receiver
ELP2012-002	Kuniyoshi	mkuniyos@mpi-fr-bonn.mpg.de	+49 228 525 505	software testing
ELP2012-002	Kuniyoshi	mkuniyos@mpi-fr-bonn.mpg.de	+49 228 525 505	software testing
ELP2012-002	Kuniyoshi	mkuniyos@mpi-fr-bonn.mpg.de	+49 228 525 505	software testing
ELP2012-002	Kuniyoshi	mkuniyos@mpi-fr-bonn.mpg.de	+49 228 525 505	software testing
ELP2012-003	Verbiest	verbiest@mpi-fr-bonn.mpg.de	+49 228 525 246	testing pulsar sensitivity across calibration table change
ELP2012-003	Verbiest	verbiest@mpi-fr-bonn.mpg.de	+49 228 525 246	testing pulsar sensitivity across calibration table change
ELP2012-003	Verbiest	verbiest@mpi-fr-bonn.mpg.de	+49 228 525 246	testing pulsar sensitivity across calibration table change
ELP2012-004	Kuniyoshi	mkuniyos@mpi-fr-bonn.mpg.de	+49 228 525 505	station beam testing with pulsars
ELP2012-004	Kuniyoshi	mkuniyos@mpi-fr-bonn.mpg.de	+49 228 525 505	station beam testing with pulsars
ELP2012-004	Kuniyoshi	mkuniyos@mpi-fr-bonn.mpg.de	+49 228 525 505	station beam testing with pulsars
ELT2012-000	Anderson, Kloeckner	anderson@mpi-fr-bonn.mpg.de	+49 228 525 356	RFI testing with the 100 m 50 cm receiver
ELT2012-000	Anderson, Kloeckner	anderson@mpi-fr-bonn.mpg.de	+49 228 525 356	RFI testing with the 100 m 50 cm receiver
ELT2012-000	Anderson, Kloeckner	anderson@mpi-fr-bonn.mpg.de	+49 228 525 356	RFI testing with the 100 m 50 cm receiver
ELT2012-000	Anderson, Kloeckner	anderson@mpi-fr-bonn.mpg.de	+49 228 525 356	RFI testing with the 100 m 50 cm receiver
ELT2012-000	Anderson, Kloeckner	anderson@mpi-fr-bonn.mpg.de	+49 228 525 356	RFI testing with the 100 m 50 cm receiver

Experiment Information for Other Actions

ELP2012-002	Kuniyoshi	mkuniyos@mpifr-bonn.mpg.de	+49 228 525 505	software testing
ELP2012-002	Kuniyoshi	mkuniyos@mpifr-bonn.mpg.de	+49 228 525 505	software testing

Experiment Information for Operator On-Duty Schedule

ELD2012-002	Kuniyoshi	mkuniyos@mpifr-bonn.mpg.de	+49 228 525 505	Project Scheduler
ELD2012-002	Kuniyoshi	mkuniyos@mpifr-bonn.mpg.de	+49 228 525 505	Project Scheduler

Time Usage [hours] for Normal Observations

Experiment Code	station	TBB	HBA	LBH	LBL	interfe	lofar1	lofar2	lofar3	lofar4	lofar1a	lofar2a	lofar3a	lofar4a	lofar1b	lofarx	lofarsr	fiber	duty
ELI2011-000	0.00	0.00	0.00	0.00	0.00	0.00												0.00	
ELI2011-000	0.00	0.00	0.00	0.00	0.00	0.00												0.00	
ELI2012-000	395.50	395.50	395.50	395.50	395.50	395.50												395.50	
ELI2012-000 A	37.00	37.00	37.00	37.00	37.00	37.00												37.00	
ELI2012-000 B	73.00	73.00	73.00	73.00	73.00	73.00												73.00	
ELI2012-000 C	96.00	96.00	96.00	96.00	96.00	96.00												96.00	
ELI2012-000 D	73.00	73.00	73.00	73.00	73.00	73.00												73.00	
ELI2012-000 E	116.50	116.50	116.50	116.50	116.50	116.50												116.50	
ELI2012-003	16.50		14.50	14.50			14.50	14.50	14.50	14.50						14.50	14.50	14.50	
ELI2012-003 A	1.00		1.00	1.00			1.00	1.00	1.00	1.00						1.00	1.00	1.00	
ELI2012-003 B	4.00		4.00	4.00			4.00	4.00	4.00	4.00						4.00	4.00	4.00	
ELI2012-003 C	1.00																		
ELI2012-003 D	6.50		6.50	6.50			6.50	6.50	6.50	6.50						6.50	6.50	6.50	
ELI2012-003 E	1.00																		
ELI2012-003 F	1.00		1.00	1.00			1.00	1.00	1.00	1.00						1.00	1.00	1.00	
ELI2012-003 F	1.00		1.00	1.00			1.00	1.00	1.00	1.00						1.00	1.00	1.00	
ELI2012-003 H	1.00		1.00	1.00			1.00	1.00	1.00	1.00						1.00	1.00	1.00	
ELI2012-004	33.52	33.52	33.52	33.52	33.52	33.52												33.52	
ELI2012-004 A	3.50	3.50	3.50	3.50	3.50	3.50												3.50	
ELI2012-004 B	23.00	23.00	23.00	23.00	23.00	23.00												23.00	
ELI2012-004 C	3.33	3.33	3.33	3.33	3.33	3.33												3.33	
ELI2012-004 D	3.68	3.68	3.68	3.68	3.68	3.68												3.68	
ELI2012-006	9.50		9.50	9.50			9.50	9.50	9.50	9.50						9.50	9.50	9.50	
ELI2012-006 A	9.50		9.50	9.50			9.50	9.50	9.50	9.50						9.50	9.50	9.50	
ELM2012-002	0.25		0.25	0.25							0.25	0.25	0.25	0.25		0.25		0.25	
ELM2012-002 A	0.25		0.25	0.25							0.25	0.25	0.25	0.25		0.25		0.25	
ELM2012-009									2.00										
ELM2012-009									2.00										
ELO2012-000	4.00		4.00	4.00			7.00	7.00	7.00	7.00						4.00		4.00	
ELO2012-000 A	2.00		2.00	2.00			2.00	2.00	2.00	2.00						2.00		2.00	
ELO2012-000 C	2.00		2.00	2.00			2.00	2.00	2.00	2.00						2.00		2.00	
ELO2012-000 D							3.00	3.00	3.00	3.00									
ELP2011-013																			2.00
ELP2011-013 A																			2.00
ELP2012-000	6.00		6.00	6.00			6.00	6.00	6.00	6.00						6.00	6.00	6.00	
ELP2012-000 A	3.00		3.00	3.00			3.00	3.00	3.00	3.00						3.00	3.00	3.00	
ELP2012-000 B	3.00		3.00	3.00			3.00	3.00	3.00	3.00						3.00	3.00	3.00	
ELP2012-001	8.00		8.00	8.00			8.00	8.00	8.00	8.00						8.00	8.00	8.00	
ELP2012-001 A	8.00		8.00	8.00			8.00	8.00	8.00	8.00						8.00	8.00	8.00	
ELP2012-002							9.08		9.00	9.17									
ELP2012-002 A							9.00		9.00	9.00									
ELP2012-002 B										0.17									
ELP2012-002 C							0.08												
ELP2012-003	5.75		5.75	5.75							5.75	5.75	5.75	5.75		5.75	5.75	5.75	
ELP2012-003 A	2.75		2.75	2.75							2.75	2.75	2.75	2.75		2.75	2.75	2.75	
ELP2012-003 B	3.00		3.00	3.00							3.00	3.00	3.00	3.00		3.00	3.00	3.00	
ELP2012-004	37.50		37.50	13.50			24.00	24.00	13.50	13.50						37.50		13.50	
ELP2012-004	24.00		24.00				24.00	24.00								24.00			
ELP2012-004 A	13.50		13.50	13.50					13.50	13.50						13.50		13.50	
ELT2012-000	22.67		22.67	22.67			40.67	40.67	40.67	40.67	18.00	18.00	18.00	18.00		22.67	40.67	22.67	
ELT2012-000 A	20.67		20.67	20.67			20.67	20.67	20.67	20.67						20.67	20.67	20.67	
ELT2012-000 A	2.00		2.00	2.00			2.00	2.00	2.00	2.00						2.00	2.00	2.00	
ELT2012-000 B							3.00	3.00	3.00	3.00	3.00	3.00	3.00					3.00	

Experiment Code	station	TBB	HBA	LBH	LBL	interfe	lofar1	lofar2	lofar3	lofar4	lofar1a	lofar2a	lofar3a	lofar4a	lofar1b	lofarx	lofarsr	fiber	duty
ELT2012-000 B							5.00	5.00	5.00	5.00	5.00	5.00	5.00	5.00			5.00		
ELT2012-000 B							10.00	10.00	10.00	10.00	10.00	10.00	10.00	10.00			10.00		

Time Usage [hours] for Other Actions

Experiment Code	station	TBB	HBA	LBH	LBL	interfe	lofar1	lofar2	lofar3	lofar4	lofar1a	lofar2a	lofar3a	lofar4a	lofar1b	lofarx	lofarsr	fiber	duty
ELP2012-002									731.00								731.00		
ELP2012-002 AA									731.00								731.00		

Summary of Time Usage [total=744.00 hours] for MPIfR Effelsberg LOFAR Station

Experiment Code	station	TBB	HBA	LBH	LBL	interfe	lofar1	lofar2	lofar3	lofar4	lofar1a	lofar2a	lofar3a	lofar4a	lofar1b	lofarx	lofarsr	fiber	duty	
normal																				
Science A (Astrometry)																				
Science C (Cosmology)																				
Science E (Extragalactic)																				
Science G (Galactic)																				
Science H (Ionosphere)																				
Science N (AGN)																				
Science O (Other)	4.00		4.00	4.00			7.00	7.00	7.00	7.00						4.00		4.00		
Science P (Pulsar)	57.25		57.25	33.25			47.08	38.00	36.50	36.67	5.75	5.75	5.75	5.75		57.25	21.75	33.25		
Science R (Cosmic Rays)																				
Science S (Solar System)																				
Test Observation	22.67		22.67	22.67			40.67	40.67	40.67	40.67	18.00	18.00	18.00	18.00		22.67	40.67	22.67		
Maintenance Mode	0.25		0.25	0.25							2.00	0.25	0.25	0.25		0.25		0.25		
ILT Mode	455.02	429.02	453.02	453.02	429.02	429.02	24.00	24.00	24.00	24.00						24.00	24.00	453.02		
Effelsberg Mode																				
GLOW Mode																				
Juelich Mode																				
Unknown Code																				
Idle	204.82	314.98	206.82	230.82	314.98	314.98	625.25	634.33	635.83	633.67	720.00	720.00	720.00	720.00	744.00	635.83	657.58	230.82		
piggy-up																				
Piggyback Control																				
Unknown Code																				
Idle	744.00	744.00	744.00	744.00	744.00	744.00	744.00	744.00	744.00	744.00	744.00	744.00	744.00	744.00	744.00	744.00	744.00	744.00	744.00	
piggy-down																				
Piggyback Without Control																				
Unknown Code																				
Idle	744.00	744.00	744.00	744.00	744.00	744.00	744.00	744.00	13.00	744.00	744.00	744.00	744.00	744.00	744.00	744.00	13.00	744.00		
warning																				
Experiment Warning																				
Unknown Code																				
Idle	744.00	744.00	744.00	744.00	744.00	744.00	744.00	744.00	744.00	744.00	744.00	744.00	744.00	744.00	744.00	744.00	744.00	744.00	744.00	
steal																				
Override Possible																				
Unknown Code																				
Idle	744.00	744.00	744.00	744.00	744.00	744.00	744.00	744.00	744.00	744.00	744.00	744.00	744.00	744.00	744.00	744.00	744.00	744.00	744.00	
duty																				
100 m Operator																				
Anderson																				
Kuniyoshi																				
																			744.00	
Horneffer																				
Other																				
Unknown																				
Unknown Code																				
																			0.00	

