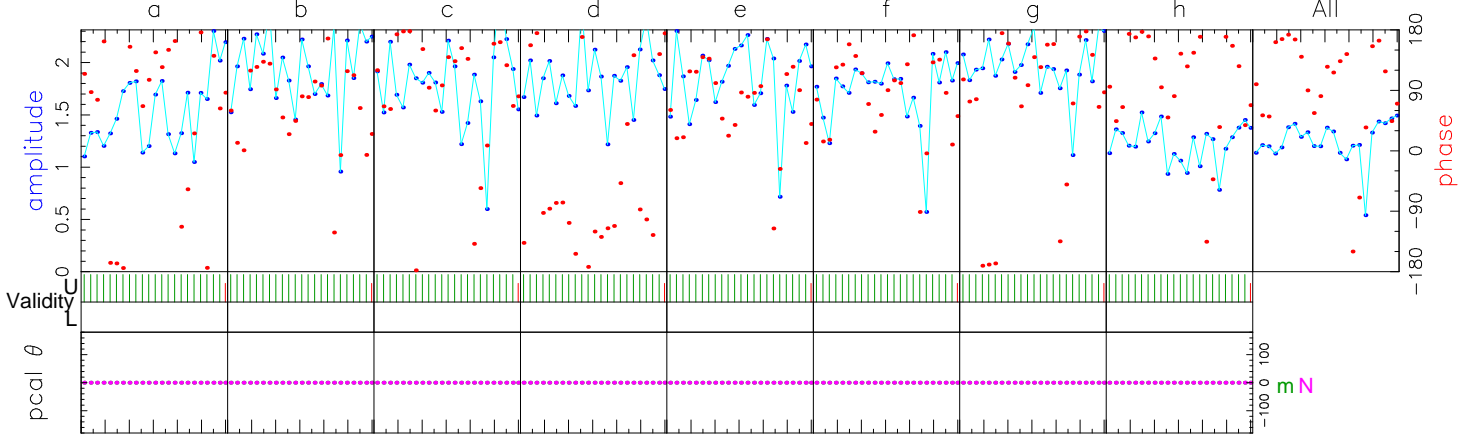


Fringe quality 3

SNR 40.0
Int time 359.929
Amp 0.771
Phase 120.5
PFD 0.0e+00
Delays (us)
SBD 0.007916
MBD -0.001887
Fringe rate (Hz)
0.003842
Ion TEC 0.000
Ref freq (MHz)
86140.0000
AP (sec) 0.512

Exp. c222d
Exper # 16383
Yr:day 2022:283
Start 051500.00
Stop 052059.94
FRT 051800.00
Corr/FF/build
2023:044:084352
2023:044:130343
2021:252:122852
RA & Dec (J2000)
01h12m05.824716s
+22°44'38.786350"

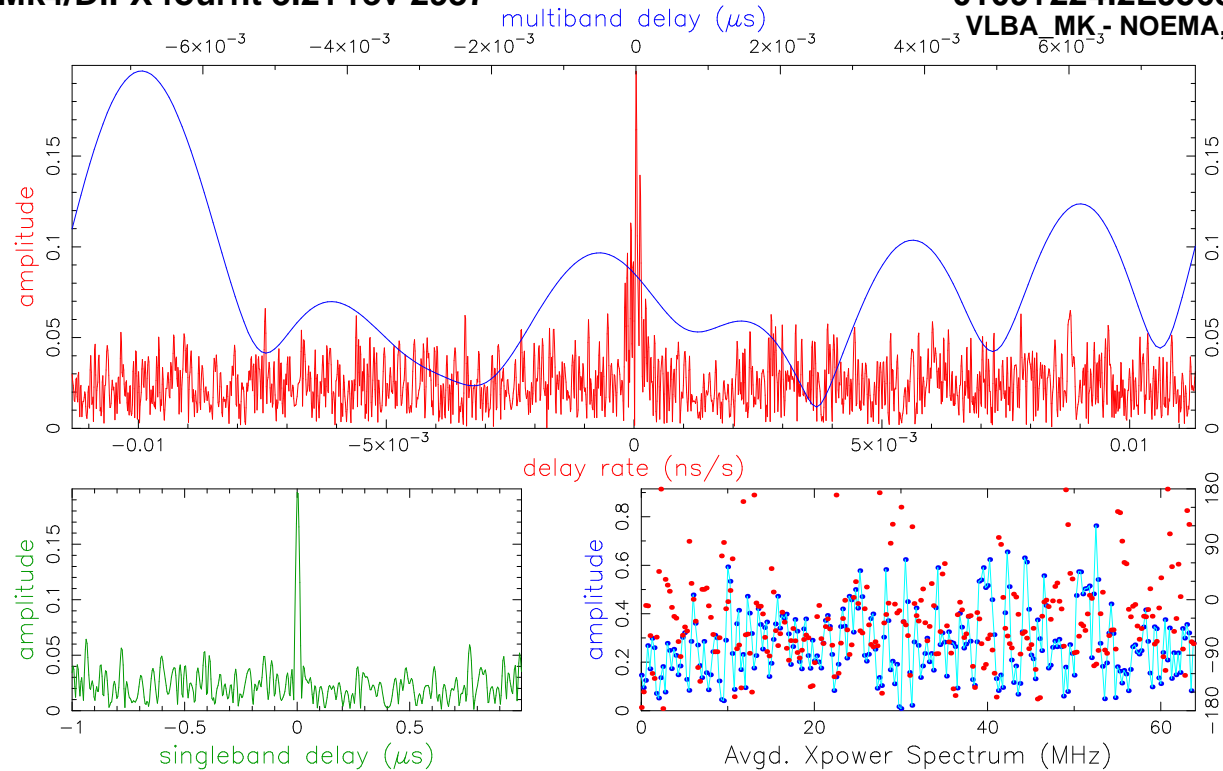
Amp. and Phase vs. time for each freq., 23 segs, 31 APs / seg (15.87 sec / seg.), time ticks 30 sec



	86012.00	86076.00	86140.00	86204.00	86268.00	86332.00	86396.00	86460.00	Freq (MHz)	All
U/L	703/0	703/0	703/0	703/0	703/0	703/0	703/0	703/0		
m	0	0	0	0	0	0	0	0		
N	0	0	0	0	0	0	0	0		
m:N	0:0	0:0	0:0	0:0	0:0	0:0	0:0	0:0		
m	1000	1000	1000	1000	1000	1000	1000	1000		
N	1000	1000	1000	1000	1000	1000	1000	1000		
m	W00UR	W01UR	W02UR	W03UR	W04UR	W05UR	W06UR	W07UR		
N	W00UR	W01UR	W02UR	W03UR	W04UR	W05UR	W06UR	W07UR		
Group delay (usec)(sbd)	138.6	79.4	132.2	-128.9	80.7	95.6	136.5	123.7		
Sband delay (usec)	0.9	1.1	1.1	1.1	1.1	1.1	1.2	0.7		
Phase delay (usec)	257.5	259.7	259.7	259.7	260.0	259.9	258.8	256.8		
Delay rate (us/s)										
Total phase (deg)			179.1							
Apriori delay (usec)										
Apriori clock (usec)										
Apriori clockrate (us/s)										
Apriori rate (us/s)										
Apriori accel (us/s/s)										
Resid mbdelay (usec)										
Resid sbdelay (usec)										
Resid phdelay (usec)										
Resid rate (us/s)										
Resid phase (deg)										
Pcal mode: MANUAL, MANUAL										
Pcal rate: 0.000E+00, 0.000E+00 (us/s)										
Bits/sample: 2x2										
Sample rate(MISamp/s): 128										
Data rate(Mb/s): 2048										
nlags: 256										
t_cohere infinite										
sb window (us)										
mb window (us)										
dr window (ns/s)										
ion window (TEC)										
simultaneous interpolator										

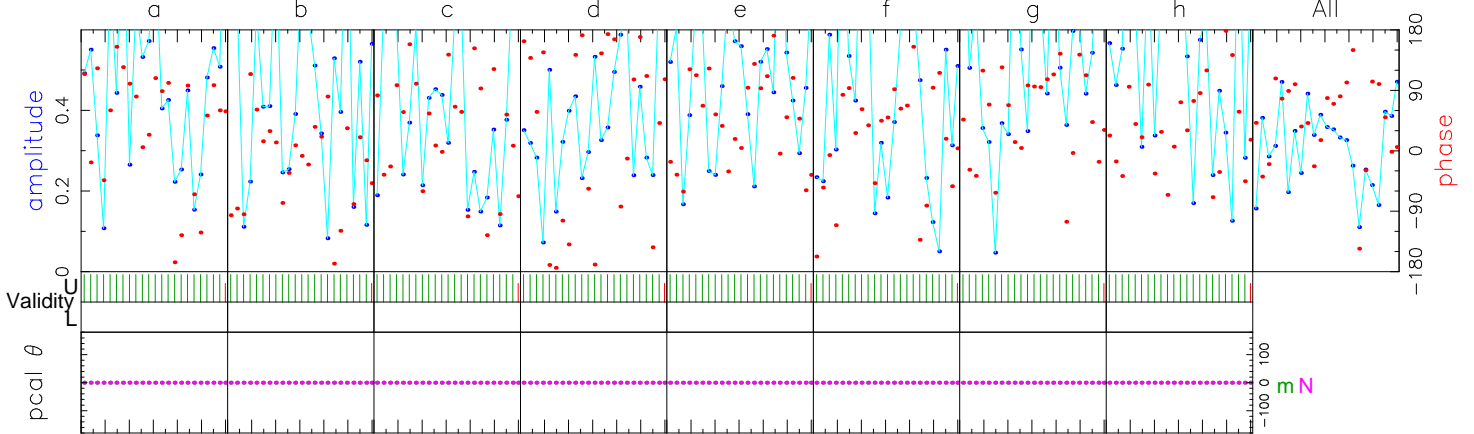
m: az 71.9 el 19.5 pa -76.0 N: az 283.4 el 19.4 pa 48.5 u,v (fr/asec) -14443.702 -3517.384

Control file: cf_1234_gmva Input file: /Exps/c222d/v1/3mm/3001/No0056/mN..2L9568 Output file: /Exps/c222d/v1/3mm/3001/No0056/mN.W.104.2L9568



Fringe quality 9
SNR 10.4
Int time 359.929
Amp 0.200
Phase 50.7
PFD 1.5e-16
Delays (us)
SBD 0.001811
MBD -0.006805
Fringe rate (Hz) 0.003688
Ion TEC 0.000
Ref freq (MHz) 86140.0000
AP (sec) 0.512
Exp. c222d
Exper # 16383
Yr:day 2022:283
Start 051500.00
Stop 052059.94
FRT 051800.00
Corr/FF/build
2023:044:084352
2023:044:130347
2021:252:122852
RA & Dec (J2000)
01h12m05.824716s
+22°44'38.786350"

Amp. and Phase vs. time for each freq., 23 segs, 31 APs / seg (15.87 sec / seg.), time ticks 30 sec



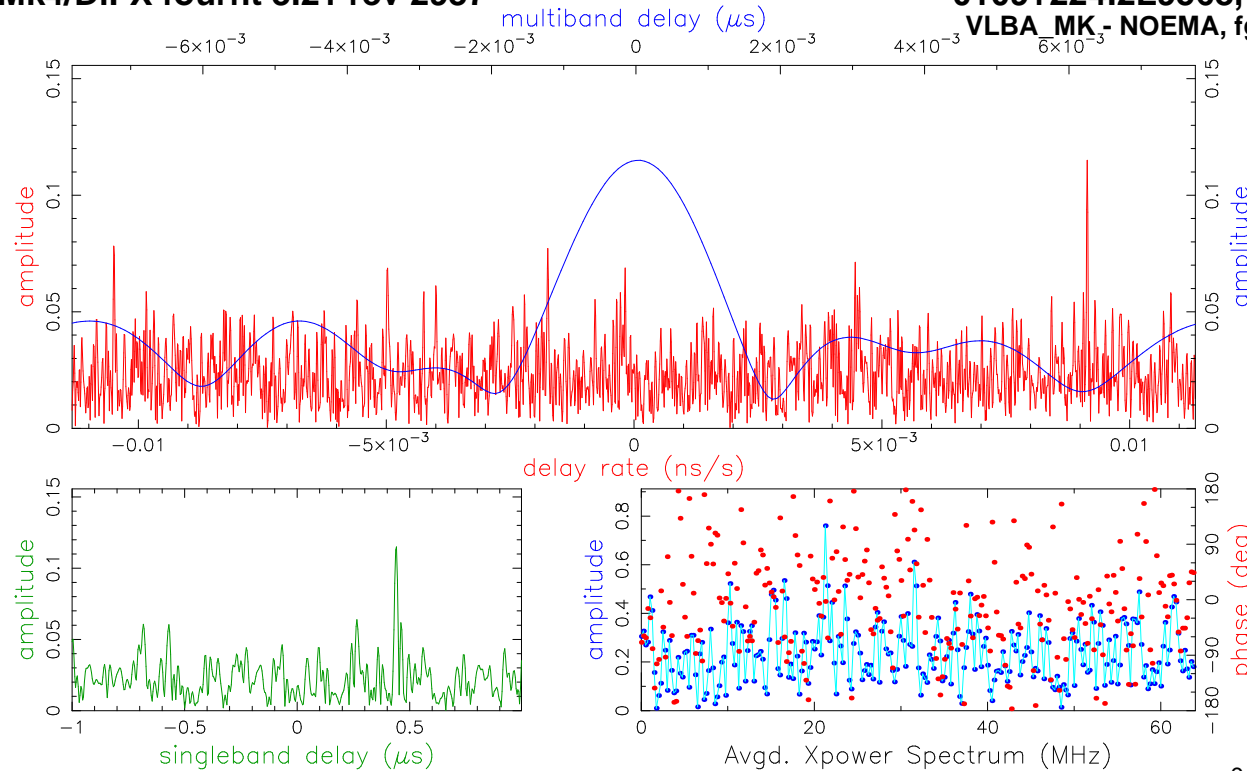
	86012.00	86076.00	86140.00	86204.00	86268.00	86332.00	86396.00	86460.00	Freq (MHz)	All
	83.4	-4.9	40.2	165.4	38.6	53.0	59.1	39.6	Phase	50.7
	0.3	0.2	0.2	0.1	0.2	0.2	0.3	0.3	Ampl.	0.2
	256.2	257.0	258.4	258.7	258.4	258.9	257.5	255.6	Sbd box	257.5
U/L	703/0	703/0	703/0	703/0	703/0	703/0	703/0	703/0	APs used	
m	0	0	0	0	0	0	0	0	PC freqs	
N	0	0	0	0	0	0	0	0	PC freqs	
m:N	0:0	0:0	0:0	0:0	0:0	0:0	0:0	0:0	PC phase	
m:N	0:0	0:0	0:0	0:0	0:0	0:0	0:0	0:0	Mani PC	
m	1000	1000	1000	1000	1000	1000	1000	1000	PC amp	
N	1000	1000	1000	1000	1000	1000	1000	1000		
m	W00UL	W01UL	W02UL	W03UL	W04UL	W05UL	W06UL	W07UL	Chan ids	
N	W00UR	W01UR	W02UR	W03UR	W04UR	W05UR	W06UR	W07UR	Tracks	
									Tracks	
Group delay (usec)(sbd)	6.38975166928E+02		Apriori delay (usec)		6.38966347375E+02		Resid mbdelay (usec)		-6.80545E-03	+/- 1.0E-04
Sband delay (usec)	6.38968158625E+02		Apriori clock (usec)		1.7745720E+01		Resid sbdelay (usec)		1.81125E-03	+/- 8.3E-04
Phase delay (usec)	6.38966349011E+02		Apriori clockrate (us/s)		3.7801999E-07		Resid phdelay (usec)		1.63648E-06	+/- 3.6E-07
Delay rate (us/s)	2.32005922063E+00		Apriori rate (us/s)		2.32005917781E+00		Resid rate (us/s)		4.28167E-08	+/- 1.7E-09
Total phase (deg)	109.4		Apriori accel (us/s/s)		-1.92385440969E-05		Resid phase (deg)		50.7	+/- 11.0

ph/seg (deg) 61.1 26.5 Search (2048X32) 0.196 Pcal mode: MANUAL, MANUAL PC period (AP's) 5, 5
amp/seg (%) 73.3 46.2 Interp. 0.000 Pcal rate: 0.000E+00, 0.000E+00 (us/s) sb window (us) -1.000 1.000
ph/frq (deg) 54.4 15.6 Inc. seg. avg. 0.281 Bits/sample: 2x2 SampCntNorm: enabled mb window (us) -0.008 0.008
amp/frq (%) 37.1 27.3 Inc. frq. avg. 0.236 Sample rate(MISamp/s): 128 Data rate(Mb/s): 2048 nlags: 256 t_cohere infinite dr window (ns/s) -0.011 0.011
m: az 71.9 el 19.5 pa -76.0 N: az 283.4 el 19.4 pa 48.5 u,v (fr/asec) -14443.702 -3517.384 simultaneous interpolator
Control file: cf_1234_gmva Input file: /Exps/c222d/v1/3mm/3001/No0056/mN..2L9568 Output file: /Exps/c222d/v1/3mm/3001/No0056/mN.W.133.2L9568

Mk4/DiFX fourfit 3.21 rev 2937

0109+224.2L9568, No0056, mN

VLBA_MK- NOEMA, fgroup W, pol RL

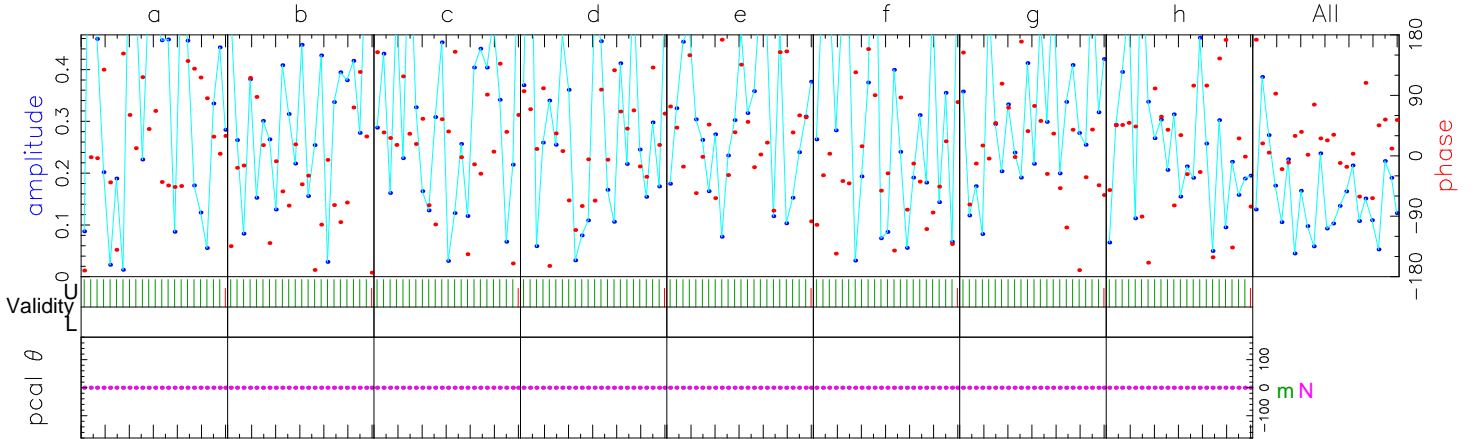


Fringe quality 0

SNR 6.1
 Int time 359.929
 Amp 0.156
 Phase 18.9
 PFD 2.7e-01
 Delays (us)
 SBD 0.439808
 MBD 0.000011
 Fringe rate (Hz) 0.788737
 Ion TEC 0.000
 Ref freq (MHz) 86140.0000
 AP (sec) 0.512

Exp. c222d
 Exper # 16383
 Yr:day 2022:283
 Start 051500.00
 Stop 052059.94
 FRT 051800.00
 Corr/FF/build
 2023:044:084352
 2023:044:130351
 2021:252:122852
 RA & Dec (J2000)
 01h12m05.824716s
 +22°44'38.786350"

Amp. and Phase vs. time for each freq., 23 segs, 31 APs / seg (15.87 sec / seg.), time ticks 30 sec



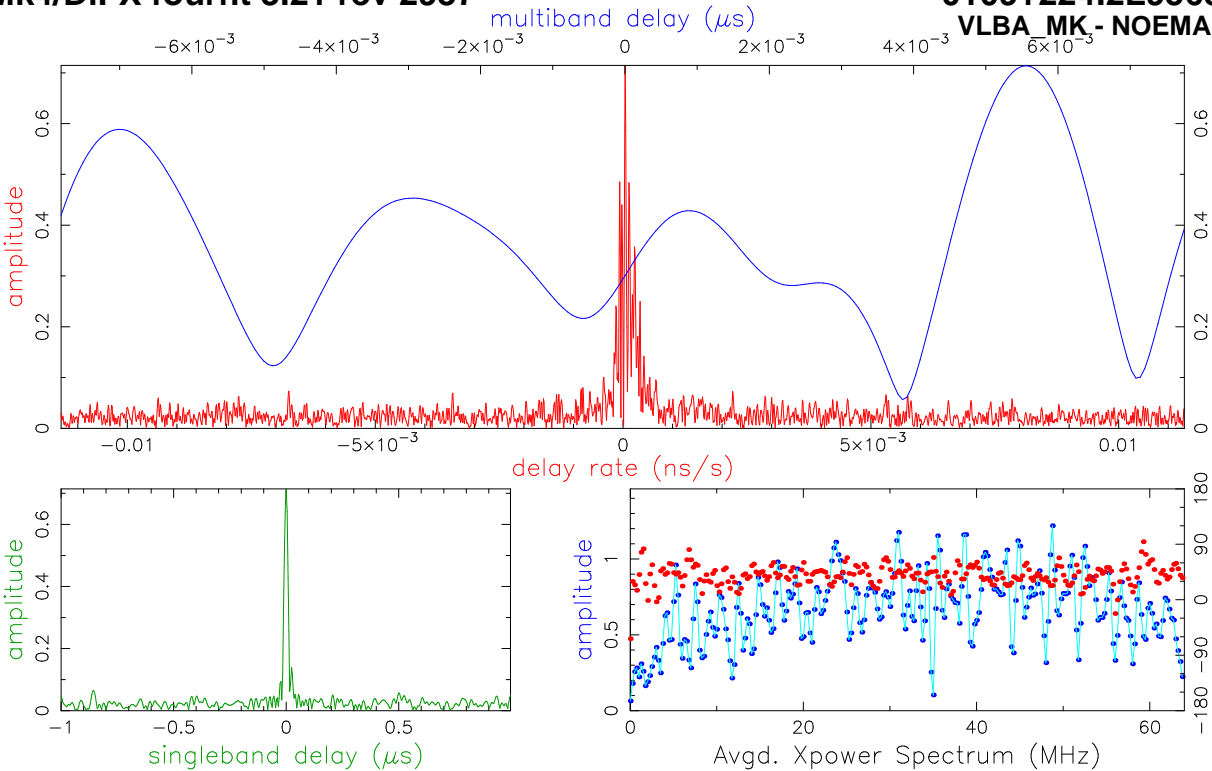
	86012.00	86076.00	86140.00	86204.00	86268.00	86332.00	86396.00	86460.00	Freq (MHz)	All
	19.7	-57.8	34.7	50.5	27.8	-24.2	21.0	23.9	Phase	18.9
	0.3	0.1	0.2	0.2	0.2	0.1	0.2	0.1	Ampl.	0.2
	406.0	433.1	103.2	82.2	337.1	165.3	291.4	189.7	Sbd box	369.6
U/L	703/0	703/0	703/0	703/0	703/0	703/0	703/0	703/0	APs used	
m	0	0	0	0	0	0	0	0	PC freqs	
N	0	0	0	0	0	0	0	0	PC freqs	
m:N	0:0	0:0	0:0	0:0	0:0	0:0	0:0	0:0	PC phase	
m:N	0:0	0:0	0:0	0:0	0:0	0:0	0:0	0:0	Mani PC	
m	1000	1000	1000	1000	1000	1000	1000	1000	PC amp	
N	1000	1000	1000	1000	1000	1000	1000	1000		
m	W00UR	W01UR	W02UR	W03UR	W04UR	W05UR	W06UR	W07UR	Chan ids	
N	W00UL	W01UL	W02UL	W03UL	W04UL	W05UL	W06UL	W07UL	Tracks	

Group delay (usec)(sbd)	6.39403857904E+02	Apriori delay (usec)	6.38966347375E+02	Resid mbdelay (usec)	1.05293E-05	+/-	1.8E-04
Sband delay (usec)	6.39406155875E+02	Apriori clock (usec)	1.7745720E+01	Resid sbdelay (usec)	4.39808E-01	+/-	1.4E-03
Phase delay (usec)	6.38966347985E+02	Apriori clockrate (us/s)	3.7801999E-07	Resid phdelay (usec)	6.10498E-07	+/-	6.1E-07
Delay rate (us/s)	2.32006833427E+00	Apriori rate (us/s)	2.32005917781E+00	Resid rate (us/s)	9.15645E-06	+/-	2.9E-09
Total phase (deg)	77.6	Apriori accel (us/s/s)	-1.92385440969E-05	Resid phase (deg)	18.9	+/-	18.9

ph/seg (deg)	52.3	Theor.	45.2	Amplitude	0.156 +/- 0.026	Pcal mode: MANUAL, MANUAL	PC period (AP's) 5, 5	
amp/seg (%)	74.6	Search (2048X32)	0.113	Interp.	0.000	Pcal rate: 0.000E+00, 0.000E+00 (us/s)	sb window (us) -1.000 1.000	
ph/frq (deg)	38.9	Inc. seg. avg.	0.158	Inc. frq. avg.	0.157	Bits/sample: 2x2	SampCntNorm: enabled	mb window (us) -0.008 0.008
amp/frq (%)	35.2	Inc. frq. avg.	0.157			Sample rate(MISamp/s): 128	dr window (ns/s) -0.011 0.011	
						Data rate(Mb/s): 2048	ion window (TEC) 0.00 0.00	

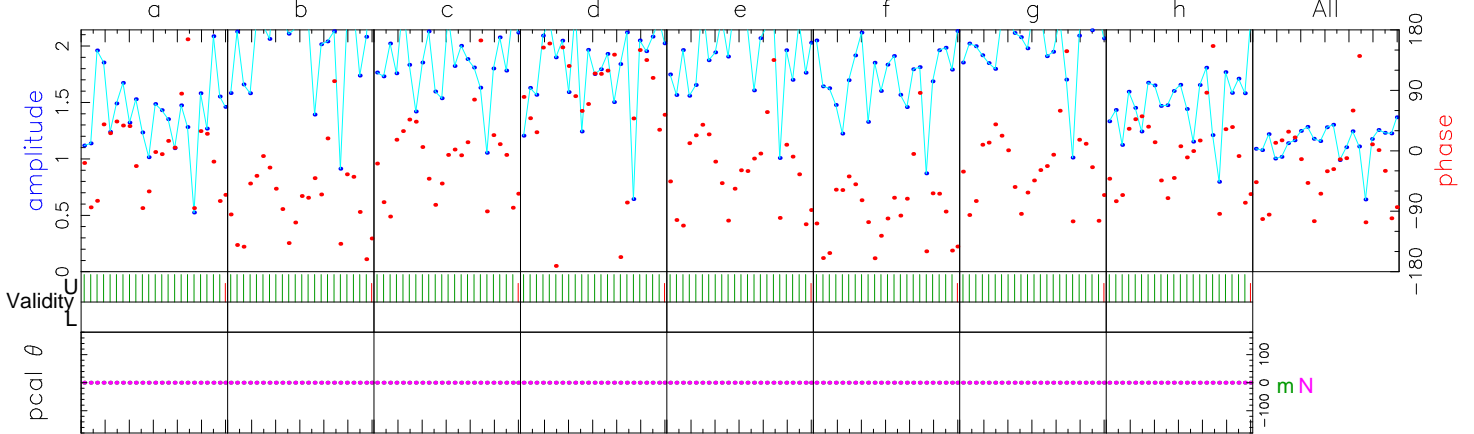
m: az 71.9 el 19.5 pa -76.0 N: az 283.4 el 19.4 pa 48.5 u,v (fr/asec) -14443.702 -3517.384 simultaneous interpolator

Control file: cf_1234_gmva Input file: /Exps/c222d/v1/3mm/3001/No0056/mN..2L9568 Output file: /Exps/c222d/v1/3mm/3001/No0056/mN.W.156.2L9568



Fringe quality 3
SNR 37.1
Int time 359.929
Amp 0.715
Phase -30.0
PFD 0.0e+00
Delays (us)
SBD -0.000445
MBD 0.005547
Fringe rate (Hz) 0.003810
Ion TEC 0.000
Ref freq (MHz) 86140.0000
AP (sec) 0.512
Exp. c222d
Exper # 16383
Yr:day 2022:283
Start 051500.00
Stop 052059.94
FRT 051800.00
Corr/FF/build
2023:044:084352
2023:044:130340
2021:252:122852
RA & Dec (J2000)
01h12m05.824716s
+22°44'38.786350"

Amp. and Phase vs. time for each freq., 23 segs, 31 APs / seg (15.87 sec / seg.), time ticks 30 sec



	86012.00	86076.00	86140.00	86204.00	86268.00	86332.00	86396.00	86460.00	Freq (MHz)	All
	-4.9	-73.5	-12.7	113.8	-27.5	-93.1	-25.7	-5.2	Phase	-30.0
	0.9	1.2	1.2	1.1	1.1	1.1	1.3	0.9	Ampl.	1.1
	255.3	256.8	257.9	258.0	257.6	257.8	257.2	255.4	Sbd box	256.9
U/L	703/0	703/0	703/0	703/0	703/0	703/0	703/0	703/0	APs used	
N	0	0	0	0	0	0	0	0	PC freqs	
m:N	0:0	0:0	0:0	0:0	0:0	0:0	0:0	0:0	PC phase	
m:N	0:0	0:0	0:0	0:0	0:0	0:0	0:0	0:0	Mani PC	
m	1000	1000	1000	1000	1000	1000	1000	1000	PC amp	
N	1000	1000	1000	1000	1000	1000	1000	1000	Chan ids	
m	W00UL	W01UL	W02UL	W03UL	W04UL	W05UL	W06UL	W07UL	Tracks	
N	W00UL	W01UL	W02UL	W03UL	W04UL	W05UL	W06UL	W07UL	Tracks	
Group delay (usec)(sbd)	6.38971894553E+02		Apriori delay (usec)		6.38966347375E+02		Resid mbdelay (usec)		5.54718E-03	+/- 2.9E-05
Sband delay (usec)	6.38965902125E+02		Apriori clock (usec)		1.7745720E+01		Resid sbdelay (usec)		-4.45250E-04	+/- 2.3E-04
Phase delay (usec)	6.38966346409E+02		Apriori clockrate (us/s)		3.7801999E-07		Resid phdelay (usec)		-9.65839E-07	+/- 1.0E-07
Delay rate (us/s)	2.32005922204E+00		Apriori rate (us/s)		2.32005917781E+00		Resid rate (us/s)		4.42253E-08	+/- 4.8E-10
Total phase (deg)	28.7		Apriori accel (us/s/s)		-1.92385440969E-05		Resid phase (deg)		-30.0	+/- 3.1

ph/seg (deg) 59.4 7.4 Search (2048X32) 0.701 Pcal mode: MANUAL, MANUAL PC period (AP's) 5, 5
 amp/seg (%) 64.2 12.9 Interp. 0.000 Pcal rate: 0.000E+00, 0.000E+00 (us/s) sb window (us) -1.000 1.000
 ph/frq (deg) 68.4 4.4 Inc. seg. avg. 1.140 Bits/sample: 2x2 SampCntNorm: enabled mb window (us) -0.008 0.008
 amp/frq (%) 57.9 7.6 Inc. frq. avg. 1.100 Data rate (Mbit/s): 2048 nlags: 256 t_cohere infinite dr window (ns/s) -0.011 0.011
 m: az 71.9 el 19.5 pa -76.0 N: az 283.4 el 19.4 pa 48.5 u,v (fr/asec) -14443.702 -3517.384 simultaneous interpolator
 Control file: cf_1234_gmva Input file: /Exps/c222d/v1/3mm/3001/No0056/mN..2L9568 Output file: /Exps/c222d/v1/3mm/3001/No0056/mN.W.80.2L9568