

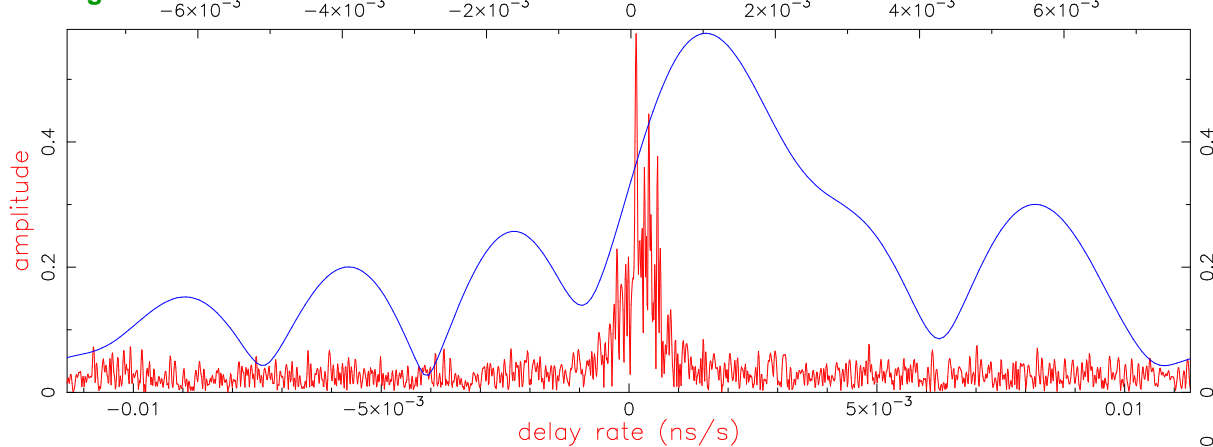
Mk4/DiFX fourfit 3.21 rev 2937

fxmanager

0420-014.1N7ECY, No0002, BX

EFLSBERG - ONSALA60, fgroup W, pol LR

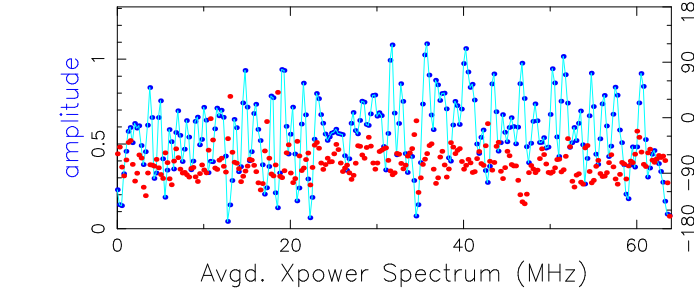
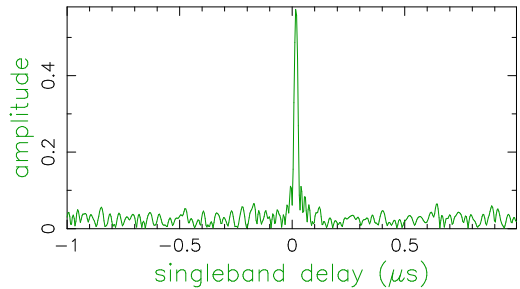
multiband delay (μ s)



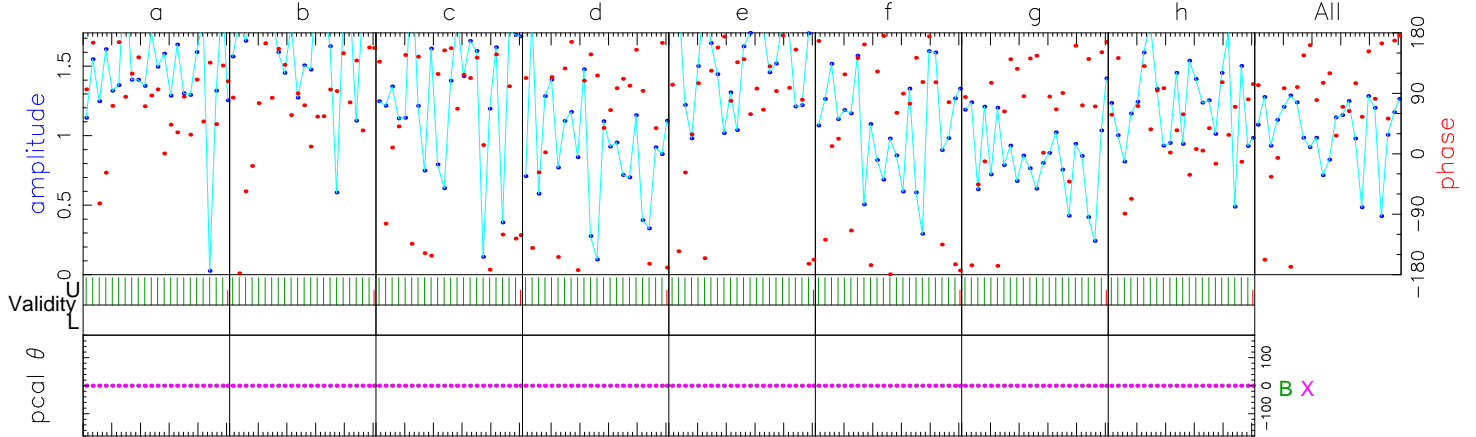
Fringe quality 5

SNR 27.5
 Int time 299.956
 Amp 0.580
 Phase 107.5
 PFD 0.0e+00
 Delays (us)
 SBD 0.017006
 MBD 0.001085
 Fringe rate (Hz)
 0.012170
 Ion TEC 0.000
 Ref freq (MHz)
 86140.0000
 AP (sec) 0.512

Exp. f211a
 Exper # 16383
 Yr:day 2021:112
 Start 121500.00
 Stop 122000.03
 FRT 121730.00
 Corr/FF/build
 2021:112:143544
 2021:112:144110
 2021:057:122453
 RA & Dec (J2000)
 04h23m15.800724s
 --1°20'33.065613"



Amp. and Phase vs. time for each freq., 23 segs, 26 APs / seg (13.31 sec / seg.), time ticks 10 sec



	86012.00	86076.00	86140.00	86204.00	86268.00	86332.00	86396.00	86460.00	Freq (MHz)	All
U/L	586/0	586/0	586/0	586/0	586/0	586/0	586/0	586/0		
B	1000	1000	1000	1000	1000	1000	1000	1000		PC freqs
X	1000	1000	1000	1000	1000	1000	1000	1000		PC freqs
B:X	0:0	0:0	0:0	0:0	0:0	0:0	0:0	0:0		PC phase
B:X	0:0	0:0	0:0	0:0	0:0	0:0	0:0	0:0		Mani PC
B	1000	1000	1000	1000	1000	1000	1000	1000		PC amp
X	1000	1000	1000	1000	1000	1000	1000	1000		
B	W00UL	W01UL	W02UL	W03UL	W04UL	W05UL	W06UL	W07UL		Chan ids
X	W00UR	W01UR	W02UR	W03UR	W04UR	W05UR	W06UR	W07UR		Tracks

Group delay (usec)(sbd)	1.46762714095E+03	Apriori delay (usec)	1.46761043103E+03	Resid mbdelay (usec)	1.08493E-03	+/-	4.0E-05
Sband delay (usec)	1.46762743678E+03	Apriori clock (usec)	-7.8382072E+01	Resid sbdelay (usec)	1.70058E-02	+/-	3.1E-04
Phase delay (usec)	1.46761043449E+03	Apriori clockrate (us/s)	-7.2800002E-07	Resid phdelay (usec)	3.46504E-06	+/-	1.3E-07
Delay rate (us/s)	1.29824530879E-01	Apriori rate (us/s)	1.29824389599E-01	Resid rate (us/s)	1.41280E-07	+/-	7.8E-10
Total phase (deg)	297.8	Apriori accel (us/s/s)	-8.04044487976E-06	Resid phase (deg)	107.5	+/-	4.2

ph/seg (deg)	60.5	RMS	10.0	Theor.	10.0	Amplitude	0.580 +/- 0.021	Pcal mode:	MANUAL, MANUAL	PC period (AP's)	5, 5		
amp/seg (%)	88.4	Search (2048X32)	0.568	Pcal rate:	0.000E+00, 0.000E+00 (us/s)	sb window (us)	-1.000 1.000	Bits/sample:	2x2	SampCntNorm: enabled	mb window (us)	-0.008 0.008	
ph/frq (deg)	40.3	Inc. seg. avg.	1.019	Sample rate (MSamp/s):	128	dr window (ns/s)	-0.011 0.011	Data rate (Mb/s):	2048	nlags: 256	t_cohere infinite	ion window (TEC)	0.00 0.00
amp/frq (%)	41.1	Inc. frq. avg.	0.689	u,v (fr/asec)	-752.150 -613.295	simultaneous interpolator							

B: az 149.5 el 34.0 pa -18.8 X: az 157.1 el 29.2 pa -11.8 Control file: cf_1234_gmva Input file: /Exps/f211a/FRINGE/1234/No0002/BX..1N7ECY Output file: /Exps/f211a/FRINGE/1234/No0002/BX.W.18.1N7ECY