

Fringe quality 9

SNR 9.2

Int time 418.823

Amp 0.378

Phase -104.2

PFD 2.6e-12

Delays (us)

SBD 0.011616

MBD 0.004180

Fringe rate (Hz) 0.005251

Ion TEC 0.000

Ref freq (MHz) 86140.0000

AP (sec) 0.512

Exp. c181c

Exper # 16383

Yr:day 2018:105

Start 083001.51

Stop 083700.84

FRT 083331.00

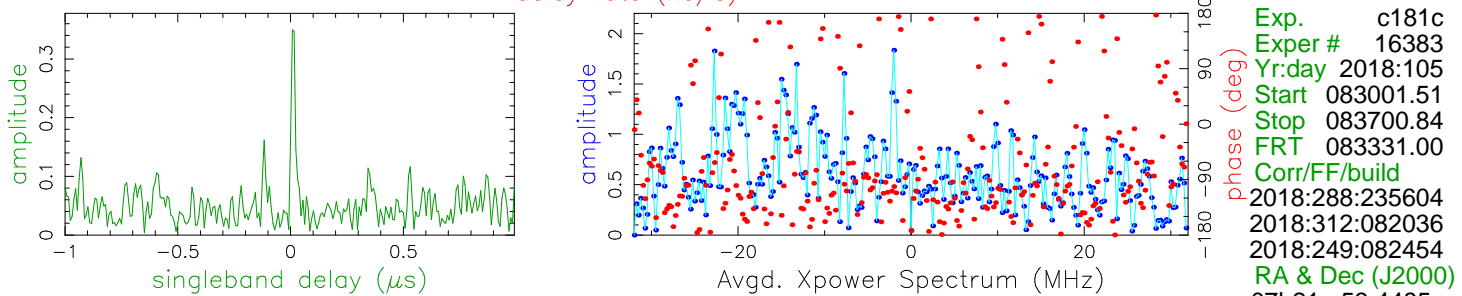
Corr/FF/build

2018:288:235604

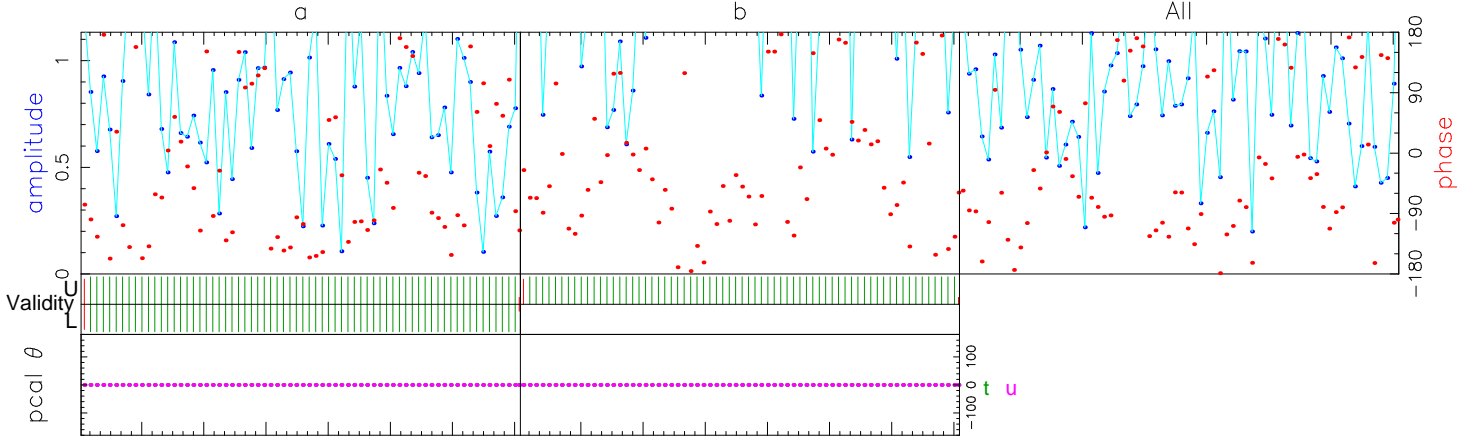
2018:312:082036

2018:249:082454

RA & Dec (J2000) 07h21m53.4485s +71°20'36.363"



Amp. and Phase vs. time for each freq., 69 segs, 12 APs / seg (6.14 sec / seg.), time ticks 10 sec



86156.00	86220.00	Freq (MHz)	All				
-124.1	-74.9	Phase	-104.2				
0.3	0.4	Ampl.	0.4				
130.3	131.0	Sbd box	130.5				
U/L 819/819	819/0	APs used					
t 0	0	PC freqs					
u 0	0	PC freqs					
t:u 0:0	0:0	PC phase					
t:u 0:0	0:0	Manl PC					
t 1000	1000	PC amp					
u 1000	1000						
t W00UR,W00LR	W01UR	Chan ids					
u W00UL,W00LL	W01UL	Tracks					
		Chan ids					
		Tracks					
Group delay (usec)(sbd)	-5.47132204890E+02	Apriori delay (usec)	-5.47136385097E+02	Resid mbdelay (usec)	4.18021E-03	+/-	5.4E-04
Sband delay (usec)	-5.47124769097E+02	Apriori clock (usec)	1.0009851E+01	Resid sbdelay (usec)	1.16160E-02	+/-	1.1E-03
Phase delay (usec)	-5.47136388456E+02	Apriori clockrate (us/s)	3.6440000E-07	Resid phdelay (usec)	-3.35877E-06	+/-	2.3E-07
Delay rate (us/s)	2.17627016435E-02	Apriori rate (us/s)	2.17626406813E-02	Resid rate (us/s)	6.09622E-08	+/-	1.7E-09
Total phase (deg)	-180.6	Apriori accel (us/s/s)	-5.04328172869E-07	Resid phase (deg)	-104.2	+/-	7.2

ph/seg (deg) 80.7 52.0 Theor. Amplitude 0.378 +/- 0.041 Pcal mode: MANUAL, MANUAL PC period (AP's) 5, 5

amp/seg (%) 156.4 90.7 Search (2048X8) 0.338 Pcal rate: 0.000E+00, 0.000E+00 (us/s) sb window (us) -1.000 1.000

ph/frq (deg) 0.0 8.9 Interp. 0.000 Bits/sample: 2x2 SampCntNorm: enabled mb window (us) -0.008 0.008

amp/frq (%) 16.7 15.4 Inc. seg. avg. 0.619 Sample rate(MSamp/s): 64 Data rate(Mb/s): 384 nlags: 128 t_cohere infinite dr window (ns/s) -0.011 0.011

t: az 6.9 el 51.3 pa -161.4 u: az 5.8 el 53.8 pa -166.4 u,v (fr/asec) -389.776 -205.487 ion window (TEC) 0.00 0.00

Control file: cf_1234_gmva Input file: /Exps/c181c/v2_pc1/1234/No0140/tu..0D2XW9 Output file: /Exps/c181c/v2_pc1/1234/No0140/tu.W.12.0D2XW9 simultaneous interpolator