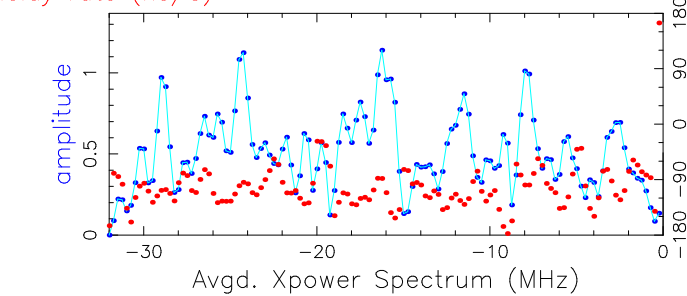
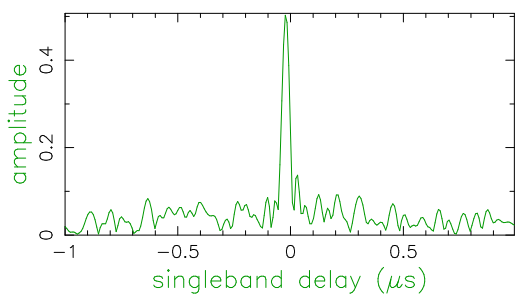
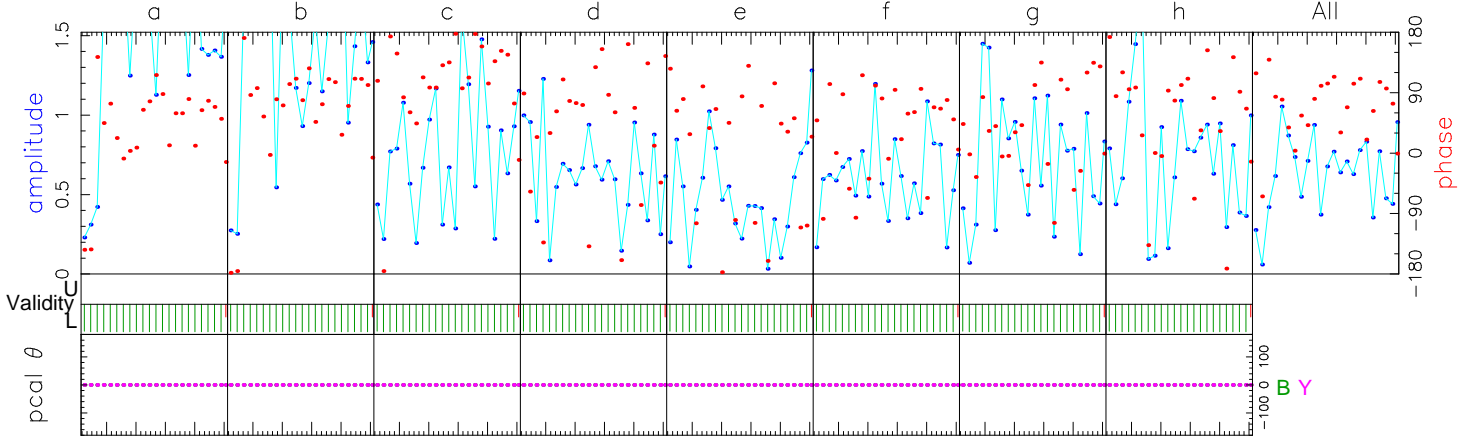


Fringe quality 7  
 SNR 16.8  
 Int time 291.676  
 Amp 0.507  
 Phase 252.9  
 PFD 0.0e+00  
 Delays (us)  
 SBD -0.021001  
 MBD 0.010269  
 Fringe rate (Hz) 0.010388  
 Ion TEC 0.000  
 Ref freq (MHz) 86140.0000  
 AP (sec) 0.500



Exp. f182a  
 Exper # 16383  
 Yr:day 2018:270  
 Start 140008.00  
 Stop 140500.00  
 FRT 140230.00  
 Corr/FF/build  
 2018:271:162139  
 2018:271:163128  
 2018:249:082454  
 RA & Dec (J2000)  
 16h35m15.4930s  
 +38°08' 4.501"

Amp. and Phase vs. time for each freq., 23 segs, 26 APs / seg (13.00 sec / seg.), time ticks 10 sec



86156.00	86188.00	86220.00	86252.00	86284.00	86316.00	86348.00	86380.00	Freq (MHz)	All
49.6	83.9	117.5	92.4	64.6	53.4	49.3	79.8	Phase	72.9
1.2	1.1	0.6	0.2	0.2	0.3	0.4	0.4	Ampl.	0.5
126.3	126.8	126.6	134.3	42.8	125.7	126.7	125.7	Sbd box	126.3
U/L 0/584	0/584	0/584	0/584	0/584	0/584	0/584	0/584	APs used	
B 0	0	0	0	0	0	0	0	PC freqs	
Y 0	0	0	0	0	0	0	0	PC freqs	
B:Y 0:0	0:0	0:0	0:0	0:0	0:0	0:0	0:0	PC phase	
B:Y 0:0	0:0	0:0	0:0	0:0	0:0	0:0	0:0	Manl PC	
B 1000	1000	1000	1000	1000	1000	1000	1000	PC amp	
Y 1000	1000	1000	1000	1000	1000	1000	1000		
B W00LR	W01LR	W02LR	W03LR	W04LR	W05LR	W06LR	W07LR	Chan ids	
Y W00LL	W01LL	W02LL	W03LL	W04LL	W05LL	W06LL	W07LL	Tracks	

Group delay (usec)(sbd)	8.47850885665E+02	Apriori delay (usec)	8.47871866363E+02	Resid mbdelay (usec)	1.02693E-02	+/-	1.3E-04
Sband delay (usec)	8.47850865863E+02	Apriori clock (usec)	1.8725471E+01	Resid sbdelay (usec)	-2.10005E-02	+/-	1.0E-03
Phase delay (usec)	8.47871868713E+02	Apriori clockrate (us/s)	-4.7999999E-07	Resid phdelay (usec)	2.35043E-06	+/-	2.2E-07
Delay rate (us/s)	-2.04173746764E-01	Apriori rate (us/s)	-2.04173867360E-01	Resid rate (us/s)	1.20596E-07	+/-	1.3E-09
Total phase (deg)	97.5	Apriori accel (us/s/s)	4.09928609107E-06	Resid phase (deg)	252.9	+/-	6.8

ph/seg (deg)	45.9	Theor.	16.4	Amplitude	0.507 +/- 0.030	Pcal mode:	MANUAL, MANUAL	PC period (AP's)	5, 5
amp/seg (%)	51.7	Search (2048X32)	0.486	Search	0.000	Pcal rate:	0.000E+00, 0.000E+00 (us/s)	sb window (us)	-1.000 1.000
ph/frq (deg)	26.1	Interp.	0.000	Inc. seg. avg.	0.602	Bits/sample:	2x2	SampCntNorm:	enabled
amp/frq (%)	74.9	Inc. frq. avg.	0.540	Inc. frq. avg.	0.540	Sample rate (MSamp/s):	64	mb window (us)	-0.016 0.016
						Data rate (Mb/s):	1024	dr window (ns/s)	-0.012 0.012
						nlags:	128	ion window (TEC)	0.00 0.00

B: az 114.3 el 67.9 pa -47.4 Y: az 83.3 el 62.4 pa -73.8 u,v (fr/asec) 1492.744 1091.320 simultaneous interpolator

Control file: cf\_1234\_gmva Input file: /Exps/f182a/FRINGE/1234/No0009/BY..0B0CF2 Output file: /Exps/f182a/FRINGE/1234/No0009/BY.W.16.0B0CF2